

## DMS8000

### Graphical Map Configuration

For:

- MM8000 Management Station MP4.30
- MT8001 Management Terminal MP4.30

With WW8000 Composer

### Quick Reference Guide

# Getting started




In the Composer project, maps are located in:  
 Supervisor System Settings → <MM8000 System> → Logical Configuration → Graphic Maps

**File types supported** (for background layer):

- Autocad: dxf, dwg, shp
- Pixel-based: bmp, jpeg, pcx
- Windows metafiles: emf, wmf

# Creating a map

To create a map, select the following:

1. The **map** icon  from the procedure icons to the left of the Composer tree.  
*A map node appears in the tree.*  
**Note:** To organise maps, select the folder icon, then store the maps in the folder.
2. The **new map** node in the tree.
3. **Edit Map** in the Node tab to launch the map wizard.  
**Note:** The simplest way to create a map in the wizard is to select the **Pixel-based Map** option, and then use the default settings. You can modify resolution units, map size, and background colour later using the *Map* menu command in the graphical editor.  
*A new-map wizard starts and the graphical editor displays.*
4. The appropriate **insert file** icon () to import a background layer.
5. The **edit layers** icon  to open *Layers* window.

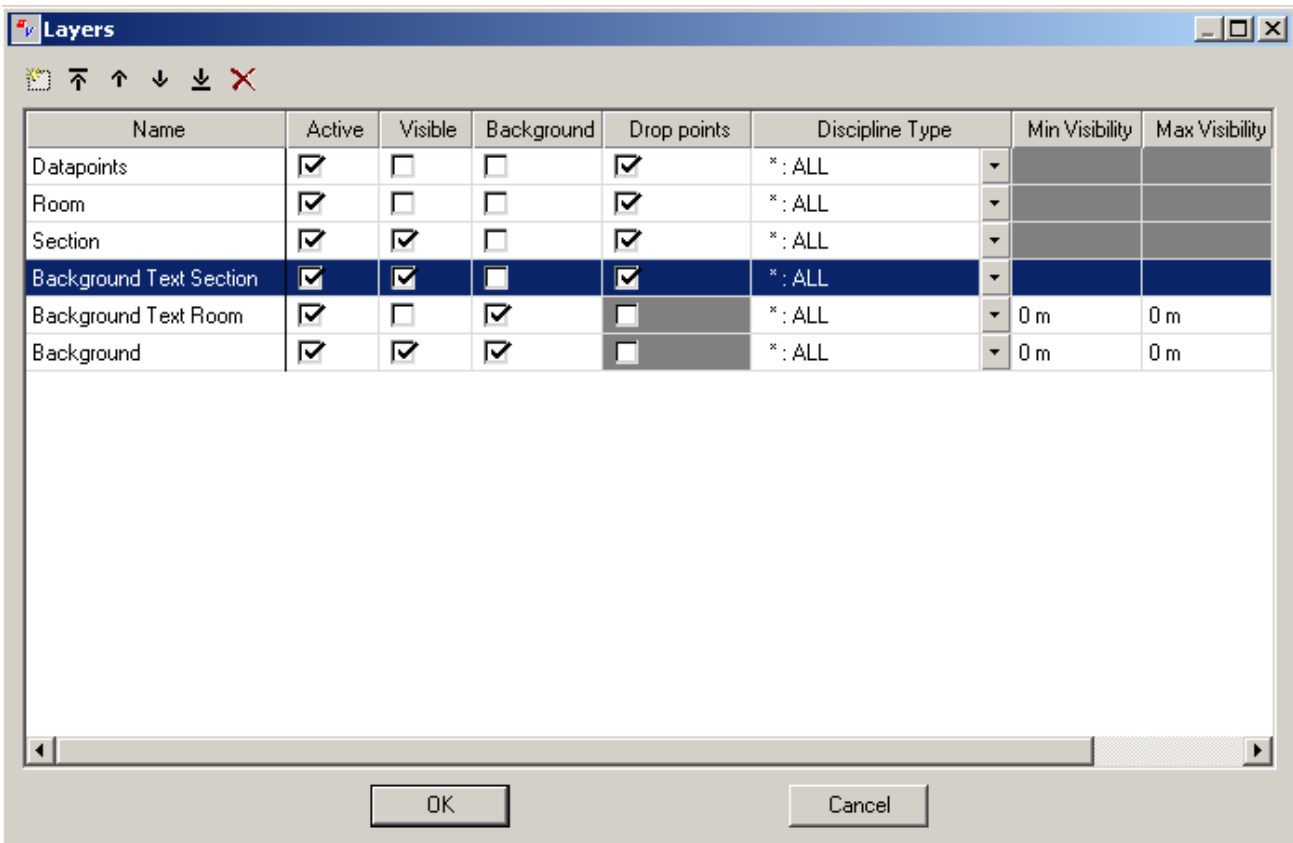




Fig. 1 Layers window

6. The **new layer** icon  to define at least one foreground layer. When finished, select **OK**.  
**Note:** Double-click on the name to rename.

To create a map, select the following: (cont'd.)

7. The **zoom factor** for a new depth using the **zoom in** , **zoom out** , or **zoom control**  icons.

8. The **new depth** icon  to create a new depth to associate to a foreground layer.  
*The Depths window opens.*

9. Deselect any background layers you don't want associated to the depth.

10. Select the associated **foreground layer(s)**.

**Note:** A depth combines one or more foreground and one or more background layers. A depth is the graphic shown on the screen. Multiple depths allow the user to quickly change views. (Dive down/up.) A foreground layer can only be associated to one depth. Limit one depth for MT8001.

11. Repeat steps 7-10 for each depth.

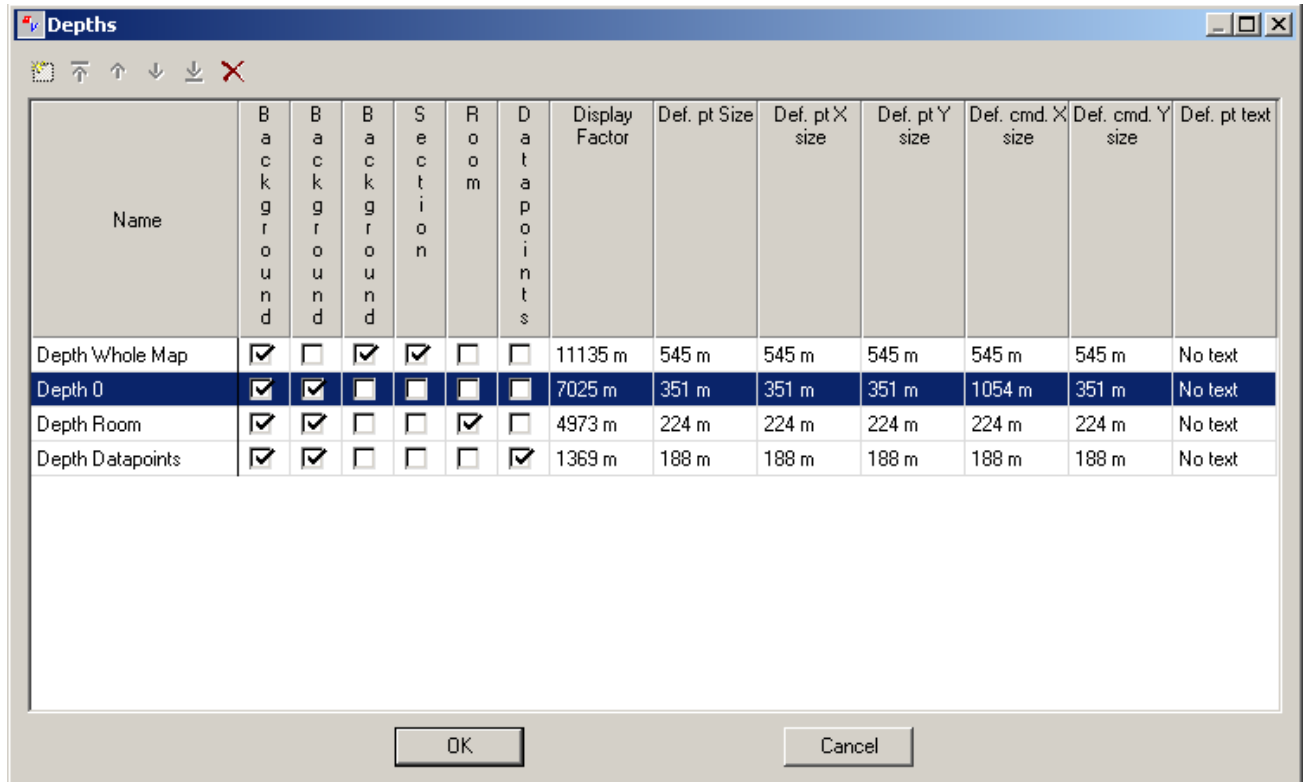


Fig. 2 Depths window

**Configure foreground layer(s):**

1. Select a **depth** from the right drop-down arrow (located near top of screen).

2. Select the associated **foreground layer** from the left drop-down arrow.

3. Select the **adjust dimension** icon  to display the Composer tree on left and map on right.

4. Drag points from the tree and drop onto the map.

**Note:** To resize initial object on the map, select the object, drag the edges to the size you want, then select the **Set default object**

**size** icon .

**Test the map:**

Test mode allows you to test visibility effects, etc. simulating MM8000 in runtime.

– Select the **test toggle** icon  in edit mode to go to test mode.

**Note:** Select the test toggle icon again to return to edit mode.

# Using the graphical editor

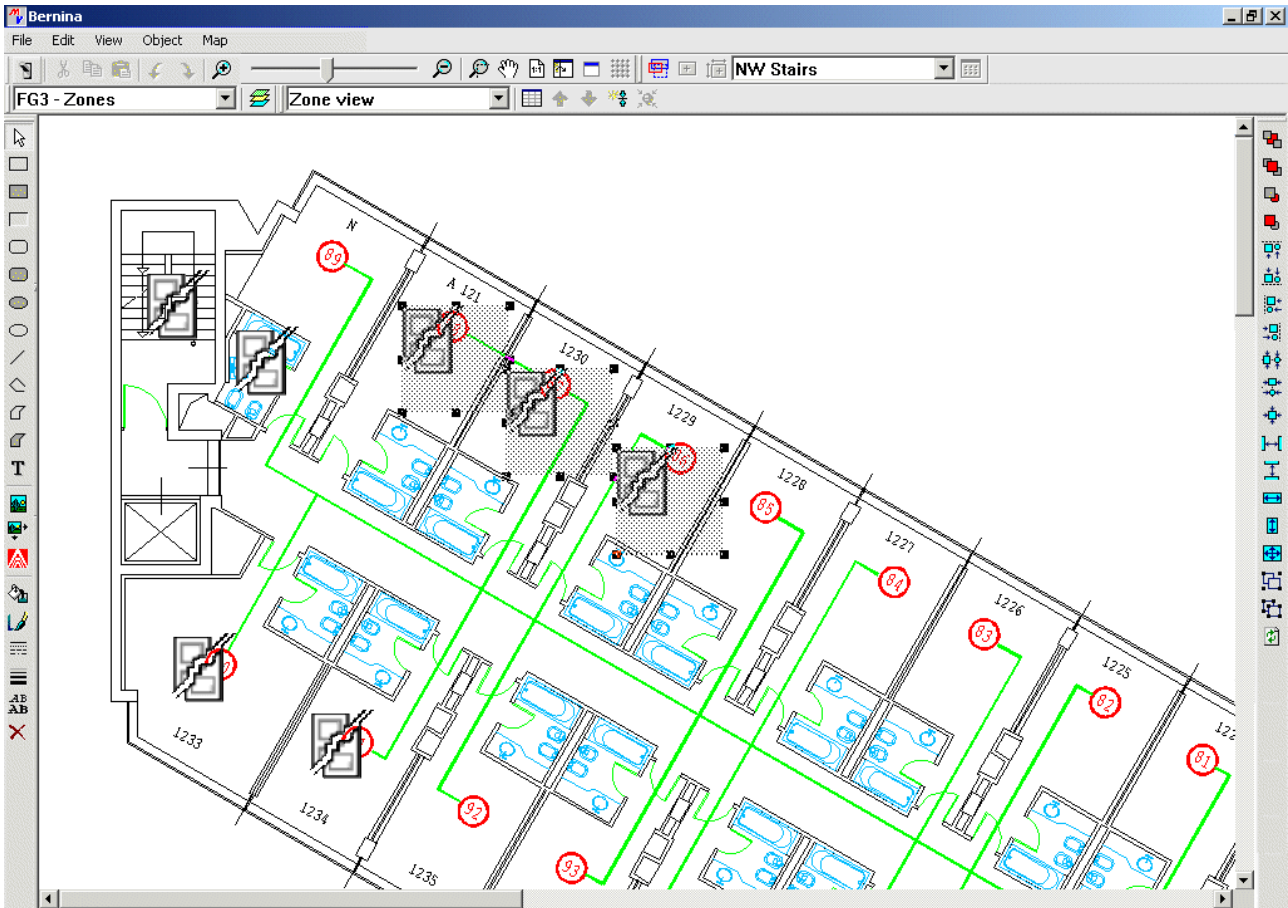


Fig. 3 Graphical editor (selected objects appear in greyed grids)

The following tables illustrate the graphical editor tools and briefly describe their functions.

➔ For function details, see *DMS8000 Graphical Map Configuration guide* (STEP #A6V10062441).

<b>Item:</b>	<b>Tool function:</b>	<b>Item:</b>	<b>Tool function:</b>
<b>Drawing tools</b>		<b>Import tools</b>	
	Select object(s) <b>Hints:</b> – Hold CTRL and left-click to select multiple objects – Hold ALT to select objects on different layers		Import file (background layer)
	Rectangles & Ellipses		– Bitmap
	Lines & Polygons		– Metafile
	Text box		– AutoCAD
		<b>Set defaults</b>	
			– Fill and line colours
			– Line style & thickness
			– Font
			– Delete selection

**Item:**  
Object size, positioning tools



**Tool function:**  
Move relative object  
– To back/front  
– Backward/forward



Align object  
– Top/bottom  
– Left/right



Centre object  
– Vertically/horizontally/both

**View tools**



Pan



Adjust view to screen size



Split screen to display Composer tree for drag and drop



Open aerial view window



Set/unset grid

**Zoom**



Zoom in/out



Zoom control



Zoom into a selected window

**Manual pages**



Toggle page mode to create a new page manually



Edit/delete manually created page

**Item:**  
Object size, positioning tools



Space objects at same distance across/down



Make objects same width/height/both



Group/ungroup objects



Refresh objects

**Layers**



Add/delete foreground layer (opens *Layers* window)



Create new layer



Move up/down layers list (to top/up one/



down one/to bottom)



Delete layer

**Depths**



Add/delete depths (opens *Depths* window)

**Note:** See Layers section above for Depth window tool functions.



Show depths



Set object default size



Create new page – fixed proportions






Create new page – free proportions

# Creating map pages manually

Create a manual page when the automatic page calculation (based on layer and depth) will not display the map you want.

## To manually create map pages, do the following:

1. Open a map. (Select map node in tree, and then **Edit Map** in Node tab.)
2. Select the **toggle page mode** icon  to open page mode.
3. Select **new page** icon  for fixed proportions or  for free proportions (MM8000 only).
4. Select an **area** on the page by dragging the rectangle.  
**Note:** To resize the shape, drag the edge.
5. Name the page.

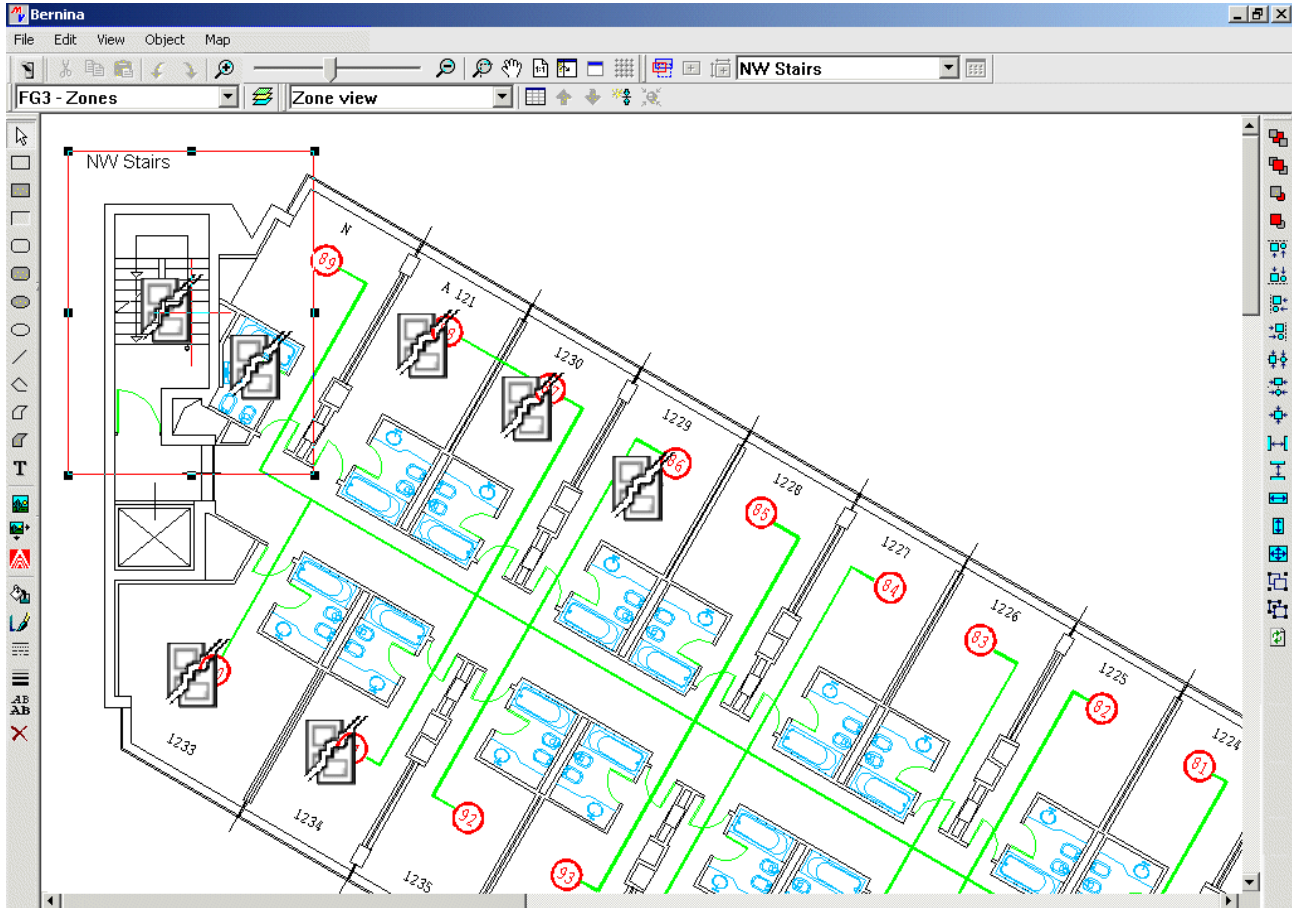



Fig. 4 Manually creating pages – rectangle shows new page, page name

## To edit or delete manually created pages:

- Select the **edit pages** icon  to display the page list dialog box.

## Associating a manual page to a datapoint

To associate a manual page to a data point, do the following:

1. Select the desired point node in the tree.
2. *MM8000*: Select the **Event Treatment** or **Plant Browser** tab.  
*MT8001*: Select the **Pages** tab.
3. *MM8000*: Select the manual page in the *Preset pages* pane, then select the **assign** icon .  
*MT8001*: Select the **map** in the *Configured Maps/Pages* pane to add to the *Maps/Pages* pane.

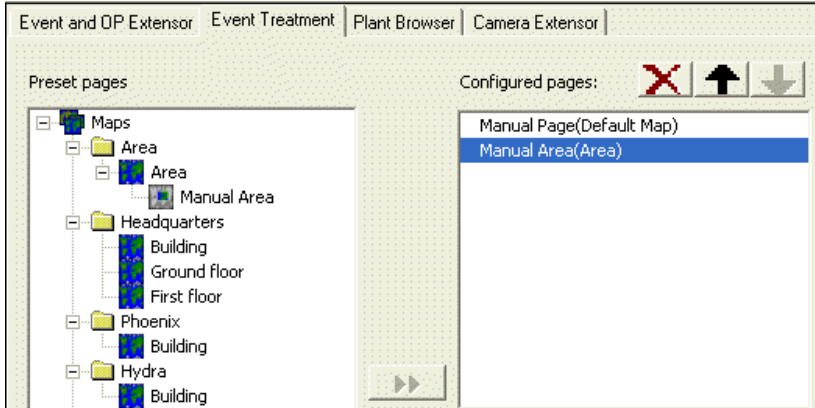


Fig. 5 Associate a page manually (*MM8000* shown)

## Creating a default map

Create a default map page so that a graphic, text, or other appears for all points that have no map associated with them. Note that this feature is not available for *MT8001*.

**Note:** Only a manual page can be used as a default page.

1. Insert a new map node into Graphic Maps.
2. Import the desired graphic using the graphical editor.
3. Name the page (*Default* recommended), save the map, and close the editor.
4. Select the **Point Page Extension node** (*Supervisor System settings* → *MM8000* → *Logical configuration* → *Point Page Extension*).
5. Select the **default map page** in the *Preset pages* area.
6. Select the **Set as Default** button.

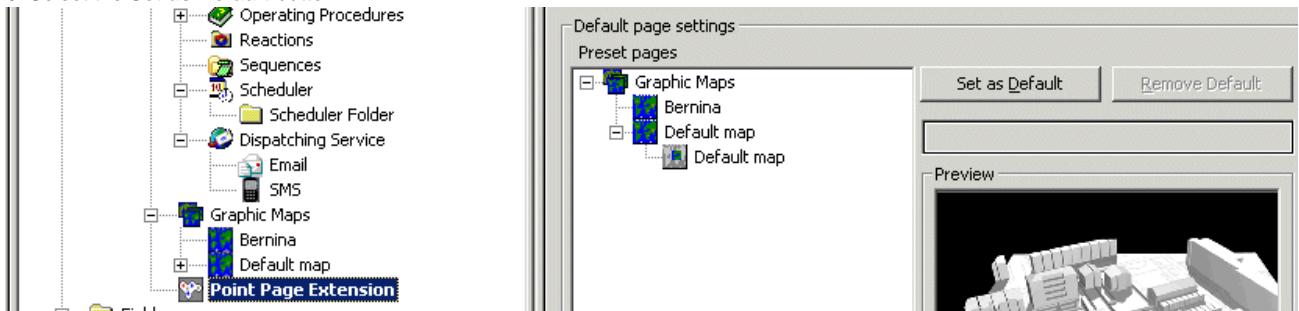



Fig. 6 Create a default map

# Associating maps to procedures

Insert a map step into an operating procedure to display a map with the event location.

**Note:** This feature is not available for the MT8001 Management Terminal. See the *MT8001 ICC* (STEP #A6V10096181) for details on how to ensure that points deposited on a map will display a graphical view during event treatment.

1. Select the desired **operating procedure** node.
2. Select the **Map** icon  to insert a map step.
3. Complete the **Step Title** and **Description** fields.

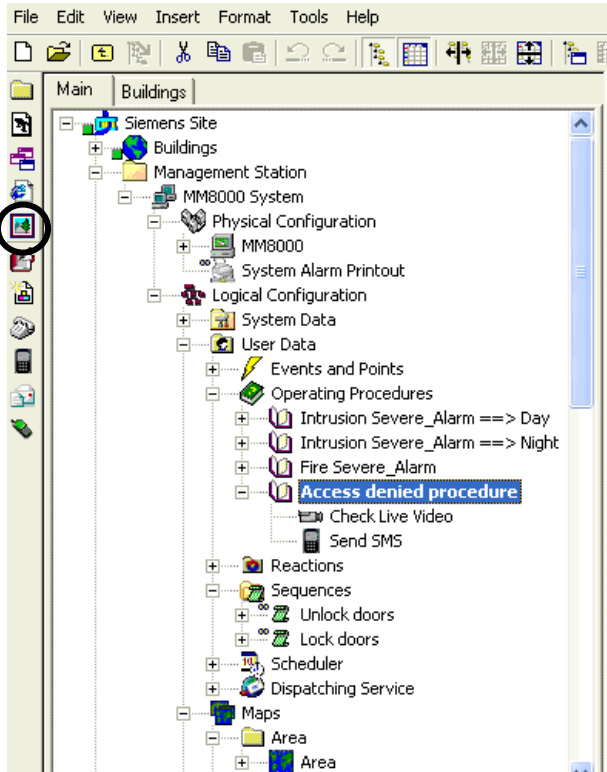


Fig. 7 Insert map step (map icon encircled on left)

Siemens Switzerland Ltd  
Building Technologies Group  
International Headquarters  
Fire Safety & Security Products  
Gubelstrasse 22  
CH-6301 Zug  
Tel +41 41 724 24 24  
Fax +41 41 724 35 22  
[www.sbt.siemens.com](http://www.sbt.siemens.com)

© 2010 Copyright by  
Siemens Switzerland Ltd  
Data and design subject to change without notice.  
Supply subject to availability.