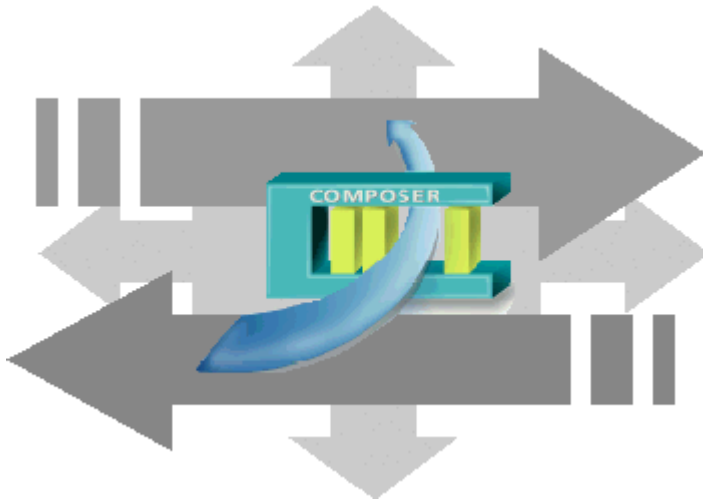


# SIEMENS



**DMS8000 MP4.xx**

**NICE/RIVER Digital Video Recorders**

Add-on module

Installation, Configuration,  
and Operations guide

**Building Technologies**

Fire Safety & Security Product

Data and design subject to change without notice. / Supply subject to availability.

© 2010 Copyright by  
Siemens Building Technologies AG

We reserve all rights in this document and in the subject thereof. By acceptance of the document the recipient acknowledges these rights and undertakes not to publish the document nor the subject thereof in full or in part, nor to make them available to any third party without our prior express written authorization, nor to use it for any purpose other than for which it was delivered to him.

	<b>About this document.....</b>	<b>2</b>
<b>1</b>	<b>Introduction .....</b>	<b>4</b>
<b>2</b>	<b>Installation .....</b>	<b>4</b>
2.1	Software installation .....	4
2.1.1	Requirements .....	4
2.1.2	Software License .....	4
2.1.3	NICE/RIVER add-on installation.....	4
2.1.4	NICE/RIVER Add-on uninstall .....	5
<b>3</b>	<b>Configuration.....</b>	<b>6</b>
3.1	Video integration .....	6
3.2	Video Network Manager .....	6
3.3	Video Drivers.....	7
3.4	Video components .....	7
3.5	NICE/RIVER configuration.....	8
3.5.1	Configuration checklist .....	8
3.5.2	Configuration procedure for DVRs .....	8
3.5.3	Configuration procedure for Decoders .....	9
<b>4</b>	<b>Connecting cameras to video inputs.....</b>	<b>11</b>
4.1	Limitations .....	11
<b>5</b>	<b>Operations .....</b>	<b>12</b>
5.1	MM8000 PTZ control panel.....	12

# About this document

---

## Purpose of this document

This manual is a guide to the configuration procedures for the integration of NICE and RIVER Video systems in MM8000 management stations.

This guide is part of the general DMS8000 documentation set which includes the Composer Technical Manual, the other DMS8000 Connectivity Guides (Network/Fire/Intrusion, Access Control, and OPC), and the Installation, Configuration, and Commissioning manual (ICC) for each specific product.

## Scope

This document applies to the MM8000 Management Station MP4.15 and higher.

## Target audience

This documentation is intended for the following users:

- Project Managers
- Project Engineers
- Commissioning Personnel

Individuals performing the operations described in this manual are expected to have prior expertise and training in the field of security, at least a moderate level of familiarity with the Siemens Building Technologies product line, and experience with the installation, configuration, and commissioning of security management systems.


## Documentation resource information

The **DMS8000 Documentation Resource Information Guide** document assembles in one place important information regarding documentation resources. It contains the following:

- Comprehensive definitions of the target audiences for FS DMS documents
- Training program information including the Siemens intranet link
- A complete list of all available DMS8000 documents
- Instructions for how to obtain a document via the Siemens intranet using the STEP Documentation Repository System
- A map of relevant documents for each target audience group
- Customer Support links & resources
- A glossary containing definitions of all terms and acronyms used in DMS8000 documentation

To access the **DMS8000 Documentation Resource Information Guide** (STEP #A6V10089056), go to the link and follow the instructions below:

<https://workspace.sbt.siemens.com/content/00001123/default.aspx>

1. Click on the **STEP WEB Client** image: 
2. Choose **04 Fire -3F** from the **Product Segment** box and select **Activate filter**.
3. Select **All** in the **Documents** section of the **Quick Search** page and then select **Advanced Search**.
4. Enter the document number in the **Brochure No.** field (e.g. A6V10089056) and press **Enter**.

## Operational and safety regulations



Before beginning work on the DMS8000 systems, you must have read and understood the related documents, in particular the Safety Regulations included in the Installation, Configuration, and Commissioning manual (ICC) for each specific product.

### Liability disclaimer for damage or injuries

Before products are delivered, they are tested to ensure they function correctly when used properly. Siemens disclaims all liability for damage or injuries caused by the incorrect application of the instructions, or the disregard of danger advisories. This disclaimer applies in particular to personal injuries or damage caused by:

- Improper and/or incorrect use.
- Disregard of safety instructions in the documentation or on the product.
- Poor maintenance or a lack of maintenance.

We have checked the contents of this manual for agreement with the hardware and software described. Since deviations cannot be precluded entirely, we cannot guarantee full agreement. However, the data in this manual are reviewed regularly and any necessary corrections included in subsequent editions. Suggestions for improvement are welcome.

### Modification index

Version	Date	Notes
A6V10097205_a_en	06.2010	Corresponds with DMS8000 MP4.30
A6V10097205_a_en	06.2009	Corresponds with DMS8000 MP4.20
A6V10097205_a_en	06.2008	Corresponds with DMS8000 MP4.15

# 1 Introduction

---

This is a guide to the software configuration procedures for the NICE and RIVER Digital Video Recorders (DVR) in the MM8000 Management Station.

For a complete guide to the configuration process, this manual should be used with the DMS8000 Network, Fire and Intrusion Guide, and with the Installation, Configuration and Commissioning manual (ICC) of the specific product.

## 2 Installation

---

The NICE/RIVER package is provided in the MM8000 product CD as add-on. It can be installed using the standard Add-on Manager.

### 2.1 Software installation

#### 2.1.1 Requirements

---

The NICE/RIVER application and driver software must be in place before installing MM8000. In fact, the MM8000 setup provides for a customization of the (previously installed) NICE/RIVER software environment.

The required application is the following:

- **PlayerComponentPackage\_v.v.v.v.exe**  
with “v.v.v.v” being the version numbers (e.g. “10.8.0.11”).

If the NICE/RIVER software is reinstalled or somehow modified, you can use the **Init\_CCTV** utility to customize the environment for MM8000 again.

→ For information about Init\_CCTV, refer to section 3.4.10 (Program Utilities) of the MM8000 ICC, doc.no. A6V10062413\_a\_en.

#### 2.1.2 Software License

---

MM8000 license must include specific items for the NICE/RIVER Add-on, for the NS8016 driver, and for the required DVR units.

Therefore, the required license includes:

- WW8000 Composer (project configuration and download): Composer License or Service key.
- MM8000 core, no. of subsystems.  
This license should include the number of DVR units.
- NICE/RIVER add-on license.
- NS8016 driver license.

Other licenses, covering more MM8000 options, may or may not be used and they are not related to the NICE/RIVER support.

#### 2.1.3 NICE/RIVER add-on installation

---

The following are the installation procedures for the NICE/RIVER add-on module.

1. Start Add-on Manager; from the Windows Start menu, select the following:

**Start → DMS8000 → Tools → Add-on Manager**

The Add-on Manager window appears (Fig. 1).

2. In the list of add-ons Names, select **Nice** or **River** depending on which product family you have to use. Note that the MM8000 Add-on software is the same for the two.

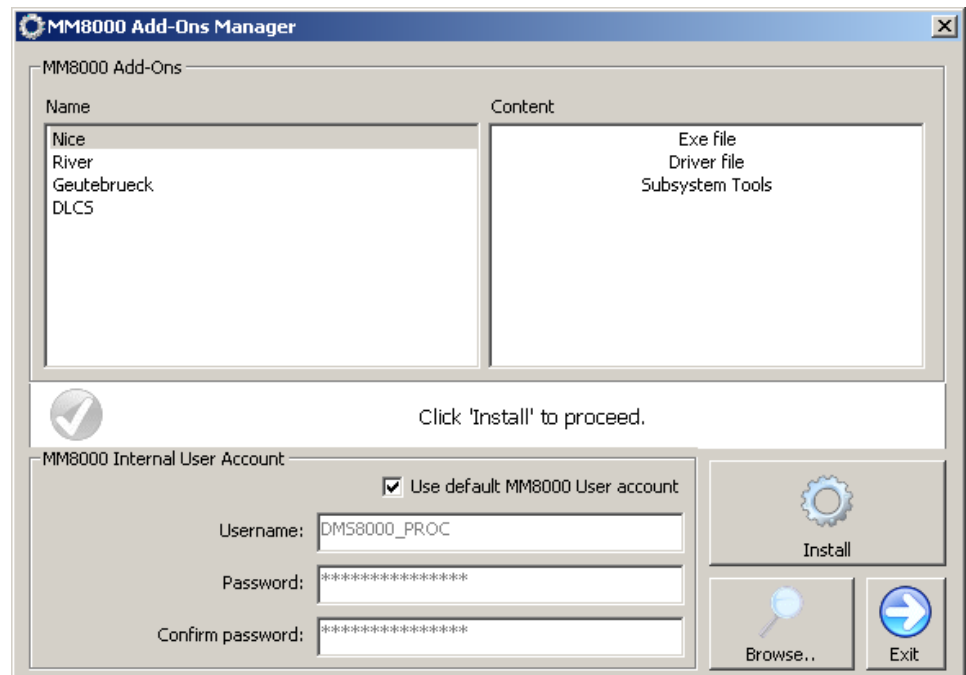


Fig. 1 Add-on Manager Window

3. If your MM8000 installation includes a customized MM8000 internal account, then deselect the default checkbox (**Use default MM8000 User account**) and specify username and password.
  - For information about the MM8000 Internal Account, refer to section 3.4.12 of the MM8000 ICC, doc.no. A6V10062413\_a\_en.
4. Click **Install** (or **Update** if a previous version is detected).

### 2.1.3.1 Multiple add-on's installation

In general, it is possible to install multiple add-on packages and benefit of their combined functionalities.

### 2.1.4 NICE/RIVER Add-on uninstall

The add-on module cannot be uninstalled.

## 3 Configuration

### 3.1 Video integration

The DMS8000 systems MM8000 and MK8000 can support various NICE video systems of the NiceVision family (and the corresponding RIVER products when applicable), including Digital Video Recorders or DVRs (NiceVision Digital products) and digital Decoders (NiceVision Net products).

The detailed list of supported products and version is provided in the latest MM8000/MK8000 Release Notes.

This integration allows providing advanced control capabilities as well as the access to video images in MM8000 event treatment and navigation.

A detailed configuration guide for this video device is provided in this section.

### 3.2 Video Network Manager

The advanced video functionalities require a basic communication infrastructure between MM8000/MK8000 and the CCTV units; this is actually a LAN network.

In Composer, a **Video Network Manager (VNM)** and the associated drivers should be added to the MM8000/MK8000 main station in order to support the video network communication. The drivers concern the NICE DVR units.

The Fig. 2 illustrates how to add the VNM to the configuration:

1. In the MM8000 physical configuration, select the main station name:  
**Supervisor System Settings → MM8000 System → Physical configuration → <Station name>**
2. Click the button **A** to add the **VNM** (see Fig. 2).

*A new node is added. No further configuration is required for the VNM.*

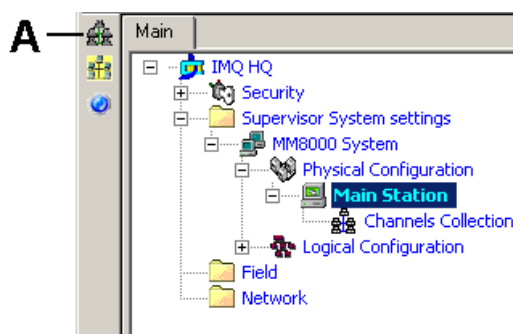


Fig. 2 Adding the Video Network Manager (A)

**Note:** Adding the VNM results in the entire Composer project being expanded in order to support the CCTV functions. Particularly, the new tab **Camera Extensor** is added to all nodes. Depending on the size of the configuration tree, the operation may take a few minutes.

The Composer plug-in #251701 is required.



### 3.3 Video Drivers

The VNM can support the driver required to handle the network communication with NICE/RIVER units. To add the driver to your project, proceed as follows:

1. Select the VNM node.
2. In the toolbar, click the icon corresponding to the NR driver (Fig. 3):

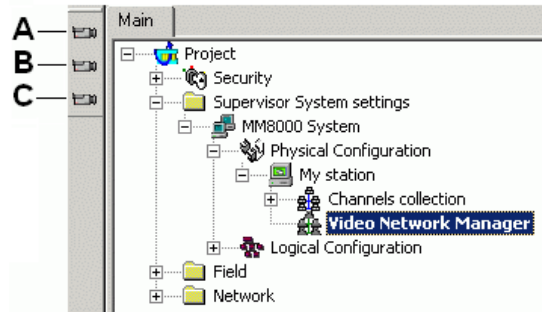


Fig. 3 Video drivers

- A Select this icon to add the TELSCAN Driver
- B Select this icon to add the SISTORE Driver
- C Select this icon to add the NICE/RIVER Driver (NR Driver)

In small system, the Video Driver is installed on the MM8000 server. Large systems may include FEP stations with additional Video Drivers that can distribute the traffic load. In the FEP station, the IP address must be configured:

1. Select the Video Driver node and then the **Node** tab.
2. In the **Server Settings** section, enter the AMS Server IP address.

### 3.4 Video components

The Video menu of the Composer button bar on the left hand side includes the available video component. Fig. 4 illustrates the menu options and the corresponding components.

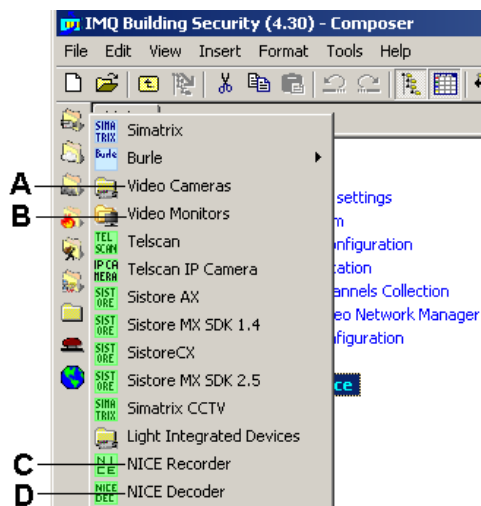


Fig. 4 CCTV components menu

- A Select this icon to add a Camera folder
- B Select this icon to add a Monitor folder
- C Select this icon to add a NICE ( or RIVER) Digital Video Recorder
- D Select this icon to add a NICE ( or RIVER) Decoder

## 3.5 NICE/RIVER configuration

---

### 3.5.1 Configuration checklist

---

Verify that you have satisfied the items needed in the first checklist before proceeding to the configuration procedure that follows.

#### ITEMS NEEDED FOR CONFIGURATION

- The NR Video driver installed and configured under the Video Network Manager in Composer
- The DVR IP address
- The camera connections
- Plug-ins needed:
  - Plug-ins 258501 (NR driver) and 358201 (NICE/RIVER ST), which must be installed before you can configure your system

### 3.5.2 Configuration procedure for DVRs




---

The following is the configuration procedure for a DVR unit:

#### Adding a folder

- Optionally, create a folder for the DVR unit.

#### Adding the DVR node

1. Select the new folder.
2. Click the **Video** menu .
3. Select the **NICE Recorder** icon  or **RIVER Recorder** icon  to add the DVR.

#### Configuring the DVR IP address

1. Select the new DVR node and click the **Node** tab.
 


**Note:** By default, the node will be named 'Nice Recorder #nn' or 'River Recorder #nn'. In the Node tab, you can customise the **Description** text.
2. In the **Setting** section, enter the **IP address**, which should match the value locally set in the DVR unit.

#### Linking the DVR node

1. Expand the node structure including the NR Video Driver:
 

**Supervisor System Settings → MM8000 System → Physical configuration → <Station name> → Video Network Manager**
2. Select the DVR node.
3. Drag and drop the link to the Video Driver.

#### Connecting the cameras

1. Select and expand the DVR node.
2. Select and expand the **Video-in folder**.
3. Add the required video inputs by clicking the **Video In** icon .

Press the SHIFT key when clicking the icon to add multiple nodes at once.

4. Expand the **Video Cameras** folder.
5. Select the video-out node of the camera.
6. Drag and drop the 'video signal' to the DVR video-in node.
7. Connect other camera outputs to the corresponding video-ins as necessary.

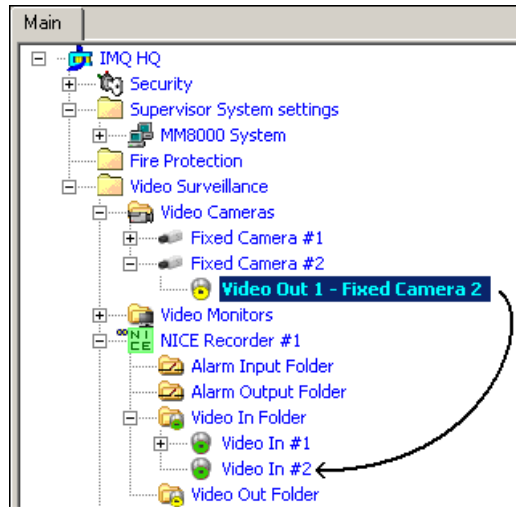


Fig. 5 Connecting cameras to video inputs

#### Video Monitors and Alarm I/O

Each DVR unit also includes monitors and alarm in/out objects. For the configuration of these objects, you can also refer to the Video Connectivity Guide (doc.no. A6V10062457).

#### Video camera coverage

The video camera coverage is configured graphically or via manual associations as described in the Graphical Map Configuration (doc.no. A6V10062441).

#### Camera Extensor tab and Preset Position for event treatment

In the **Camera Extensor** tab of each node, you can see the camera associations and manually add one or more cameras to the list associated with the selected node. Also, for dome and PTZ motorised cameras, you can set the default **Preset Position** where the camera is moved when is first selected during event treatment.

Refer to the point customization section of the MM8000 Installation, Configuration and Commissioning manual (ICC, doc.no. A6V10062413) for more information about the Camera Extensor tab.


### 3.5.3 Configuration procedure for Decoders



The following is the configuration procedure for a Decoder unit:

#### Adding a folder

- Optionally, create a folder for the Decoder unit.

#### Adding the Decoder node

1. Select the new folder.
2. Click the **Video** menu .

3. Select the **NICE Decoder** icon  or **RIVER Decoder** icon  to add the Decoder.


### Configuring the Decoder IP address

1. Select the new Decoder node and click the **Node** tab.  
**Note:** By default, the node will be named 'Nice #nn' or 'River #nn'. In the Node tab, you can customise the **Description** text.
2. In the **Setting** section, enter the **IP address**, which should match the value locally set in the Decoder unit.

### Linking the Decoder node

1. Expand the node structure including the NR Video Driver:  
**Supervisor System Settings** → **MM8000 System** → **Physical configuration** → **<Station name>** → **Video Network Manager**
2. Select the Decoder node.
3. Drag and drop the link to the Video Driver.

### Connecting the monitors

1. Expand the Decoder node.
2. Select the **Video Out Folder**.
3. Add the required video outputs by clicking the **Video Out** icon .  
Press the SHIFT key when clicking the icon to add multiple nodes at once.
4. Expand the **Video Monitors** folder.
5. Select the video-out node of the Decoder.
6. Drag and drop the 'video signal' to the video-in node of the monitor.
7. Connect other outputs to the corresponding monitor inputs as necessary.

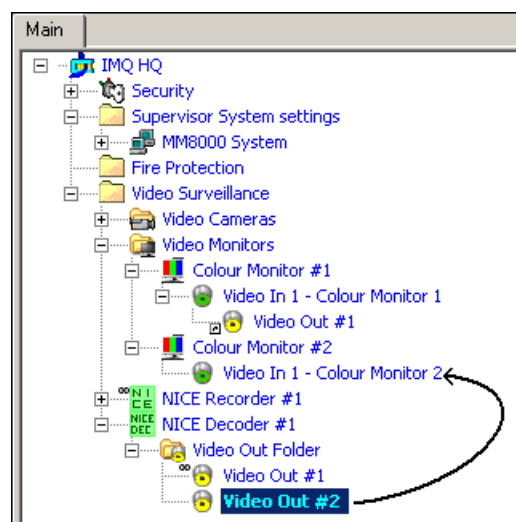


Fig. 6 Connecting Decoder outputs to Monitor inputs

## 4 Connecting cameras to video inputs

### 4.1 Limitations

---

Currently, the support of NICE/RIVER DVR units is subject to the following limitations (please check latest news with customer support):

- Maximum number of connectable DVR units per Server or FEP is 150 (100 recommended for best performance).
- Maximum number of AMS Server is 4.
- Special types of alarms (e.g. traffic, baggage, intrusion) are all mapped in MM8000 as motion detection alarms.
- Data and time synchronisation fails if a registration is in progress on the DVR unit.
- Redundant AMS Servers cannot be supported, which means that a NICE/RIVER DVR can be associated to one AMS Server only.
- Only 1 playback per station at the time is possible, even when quad-view is used.

## 5 Operations

### 5.1 MM8000 PTZ control panel

MM8000 operations are described in the MM8000 Operation Manual (document no. A6V10062409).

When operating with NICE/RIVER video systems in event treatment and plant browsing, a specific control panel is provided for the cameras equipped with PTZ control features. Fig. 7 here below illustrates the control commands available in the panel.

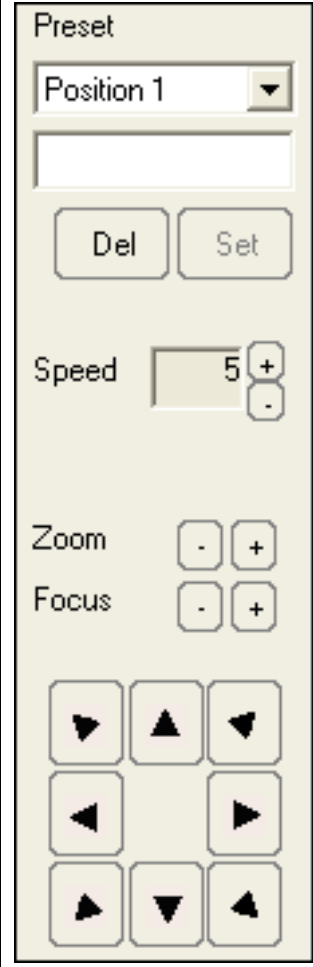
	<p><b>Preset positions</b></p> <ul style="list-style-type: none"> <li>• Select predefined position using the drop-down menu</li> <li>• Enter the names of new positions in the empty field</li> <li>• Click <b>Del</b> to delete the currently selected position</li> <li>• Click <b>Set</b> to store new positions</li> </ul> <hr/> <p><b>Speed adjustment</b></p> <ul style="list-style-type: none"> <li>• Click <b>+</b> to speed up motion and <b>-</b> to slow it down</li> </ul> <hr/> <p><b>Zoom/Focus control</b></p> <ul style="list-style-type: none"> <li>• Click <b>+</b> or <b>-</b> to adjust the camera <b>Zoom</b></li> <li>• Click <b>+</b> or <b>-</b> to adjust the camera <b>Focus</b></li> </ul> <hr/> <p><b>Pan / Tilt</b></p> <p>Click the Arrow buttons to Pan/Tilt the camera and reach any required position.</p>
------------------------------------------------------------------------------------	---------------------------------------------------------------------------------------------------------------------------------------------------------------------------------------------------------------------------------------------------------------------------------------------------------------------------------------------------------------------------------------------------------------------------------------------------------------------------------------------------------------------------------------------------------------------------------------------------------------------------------------------------------------------------------------------------------------------------------------------------------------------------------------------------------------------------------------------

Fig. 7 Cameras control commands



Siemens Switzerland Ltd  
Building Technologies Group  
International Headquarters  
Fire Safety & Security Products  
Gubelstrasse 22  
CH-6301 Zug  
Tel +41 41 724 24 24  
Fax +41 41 724 35 22  
[www.sbt.siemens.com](http://www.sbt.siemens.com)