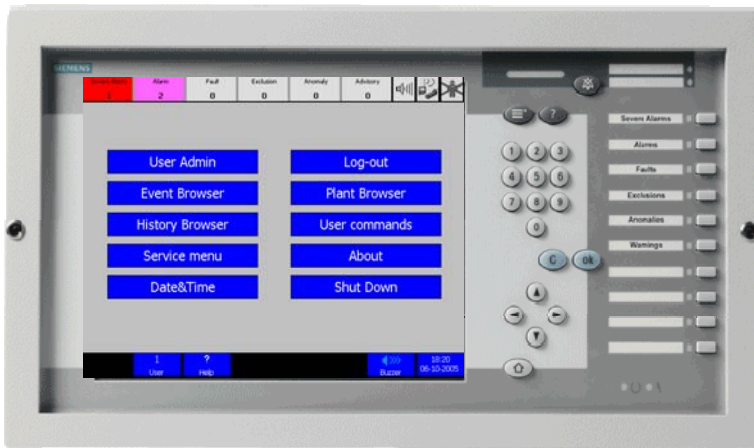


# SIEMENS



## MT8001 MP4.30 Management Terminal Operation Quick Reference Guide

# MT8001 Management Terminal

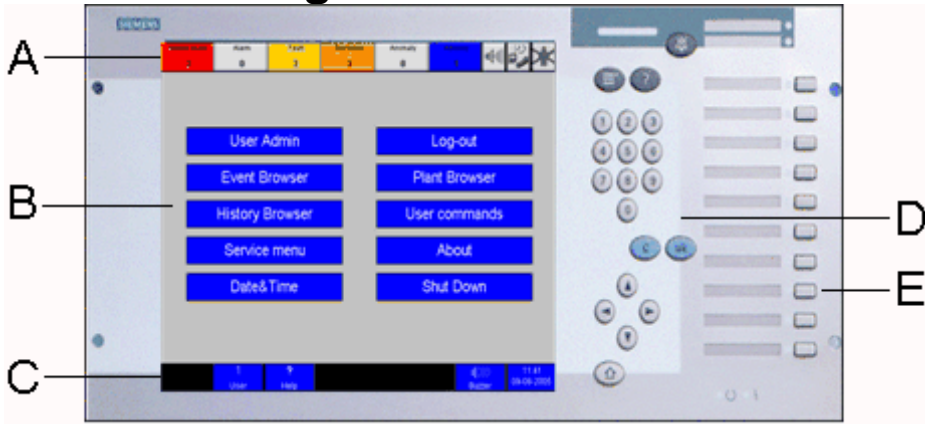


Fig. 1 MT8001 Management Terminal

Item:	Description:
A	Summary bar
B	Work area – example showing main Menu
C	Menu bar
D	Keypad panel (use to enter Login ID, for example)
E	Top six push buttons correspond with event counters

## Event Summary bar

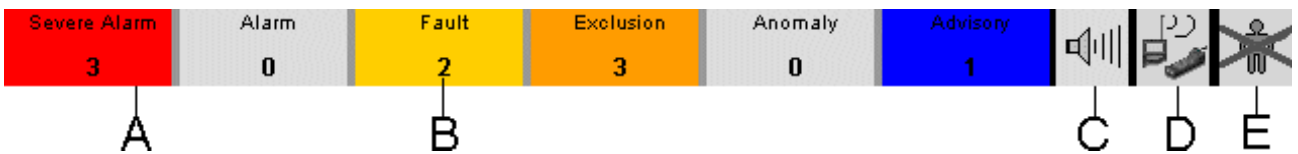


Fig. 2 MT8001 Summary bar

Item:	Name	Description
A	Event counter	Illuminated and flashing when an event occurs.
B	No. of events	Number of events of this type (in this case, Faults).
C	Horns	Status of the external alarm horns: Colour and appearance indicates current conditions (e.g. activated, in fault, excluded).
D	RT devices	Status of remote transmission device: See C above.
E	Org. Mode	Status of alarm organisation: Set / Unset (See C above).

## Menu bar



Fig. 3 Menu bar

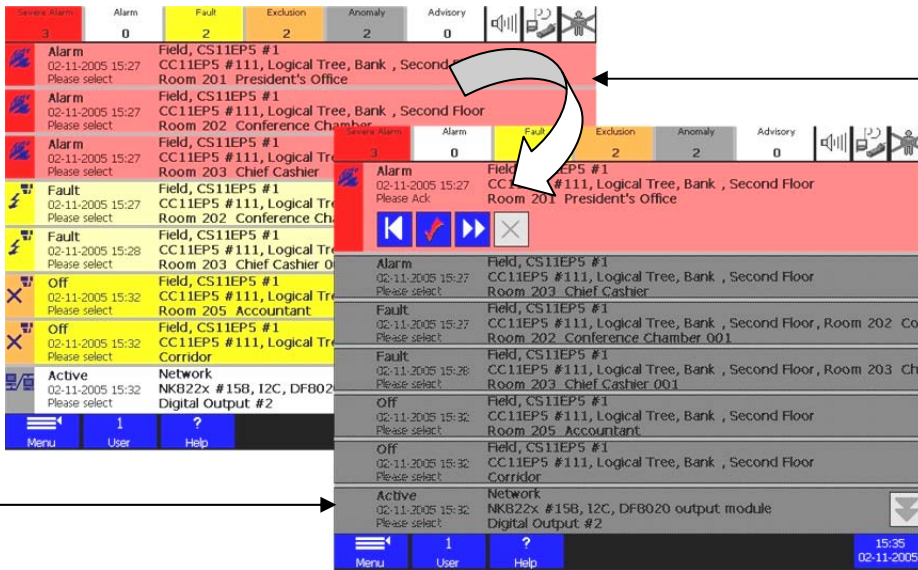
Select:	To:
A	Display the main Menu.
B	Display the user Log-out window.
C	Activate Help. Touch the screen to view a tool tip for that item.
D	Silence the buzzer.
E	Display the Date & Time window.

# Event Browser

Get to the Event Browser by selecting the **Event Browser** button on the main Menu page.

## Fast treatment



Quickly treat an event directly in the Event list by using the treatment icons.




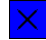

**Event list**  
Touch an event in the list to select it for treatment.

**Fast treatment screen**  
Command treatment icon is next to the suspend icon (See table below).

### Common treatment icons:

-  Acknowledge the event.
-  Reset the event.

### Command icons always present:

-  Suspend event treatment and return to the Event list.
-  Close the event – greyed-out until the event can be closed (see above).
-  Go to assisted treatment (see section next page).

### Filtering the event list:

Display events of only one category by activating the filter. To do this, touch the **event counter** for the category you want to filter for. To deactivate, touch it again or touch the filter off button.

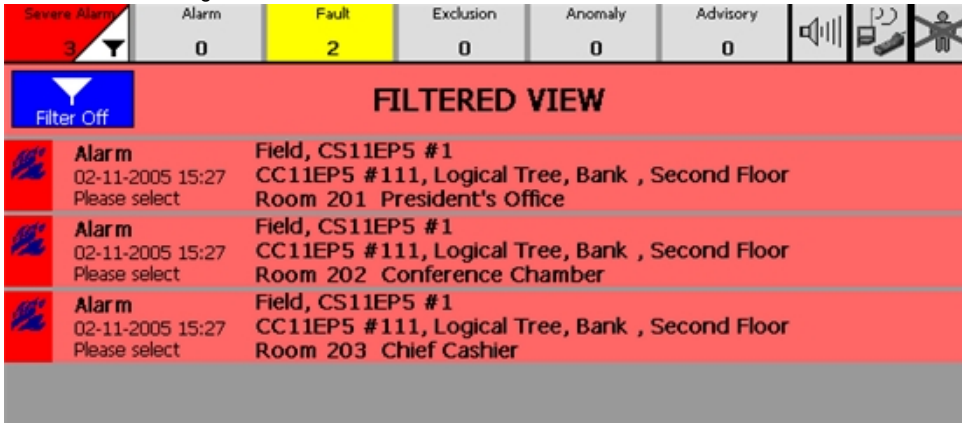


Fig. 4 Filtered Event list (in this case for Severe alarms)

# Assisted treatment

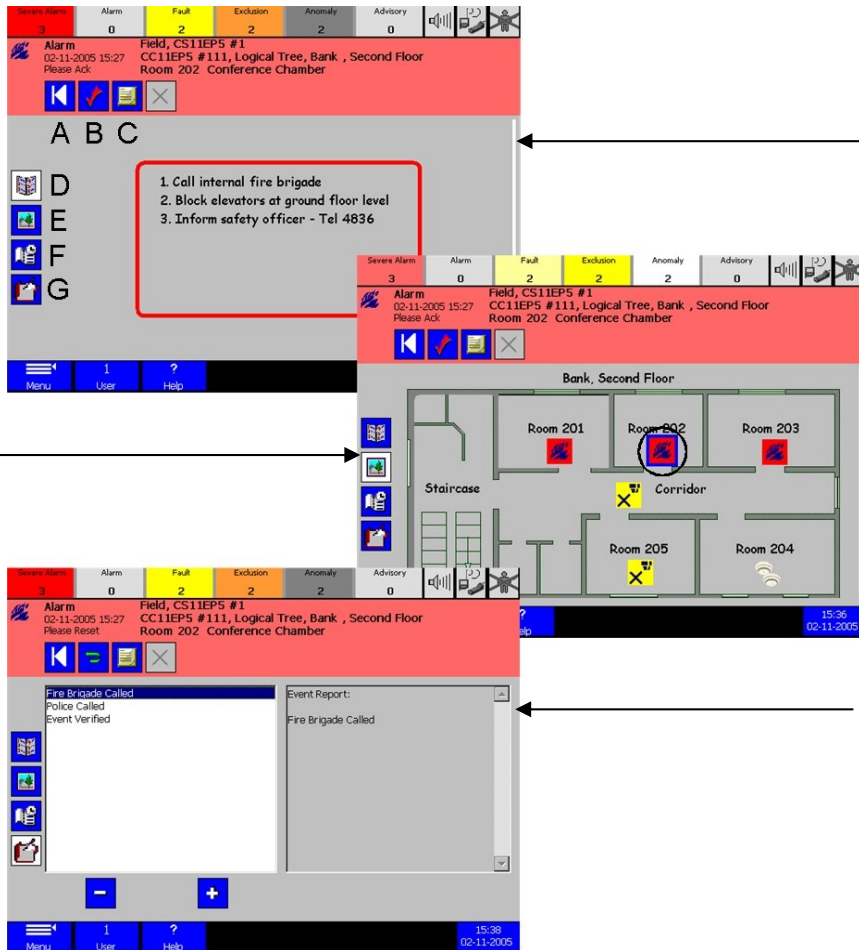
Select an **event**, then view up to four assisted treatment pages by selecting the **assisted** icon

**Select:**

- Command treatment icon (e.g. - see B below)
- Assisted treatment page icon (see D through G)
- Properties page icon (see C)
- Suspend icon (see A)

**To:**

- Treat the event.
- See instructions, view where, file a report.
- Send additional commands.
- Return to the Event list.



**E: Map page** – Shows where the event occurred.

**D: Instruction page** – Shows what to do.

**G: Report page** – Shows what was done.

Touch an **action** on left, then touch the **plus** icon to add it to the report.

**F: Protocol page** – Shows what happened and when (See Fig. 6 for example).


# Plant Browser



This section tells you how to use the Plant Browser to exclude an area.

**Plant Browser**  
Select the area you want to perform the Exclusion on in the Plant Browser tree, and then select the Properties page icon to go to the Properties page.

**Properties page icon**

**Properties page**  
Select the **Exclude** button in the Command column.

**Note:** In the example above, it is also possible to perform the Exclusion from the hierarchical tree page by selecting the command icon above the tree (in this case ). Command icons are not always present on the tree page.

Select:	To:
	Go to the Event Browser.
	Go back to the hierarchical tree page.

# History Browser

View previous event details (organised by date) on the Protocol and Report pages.

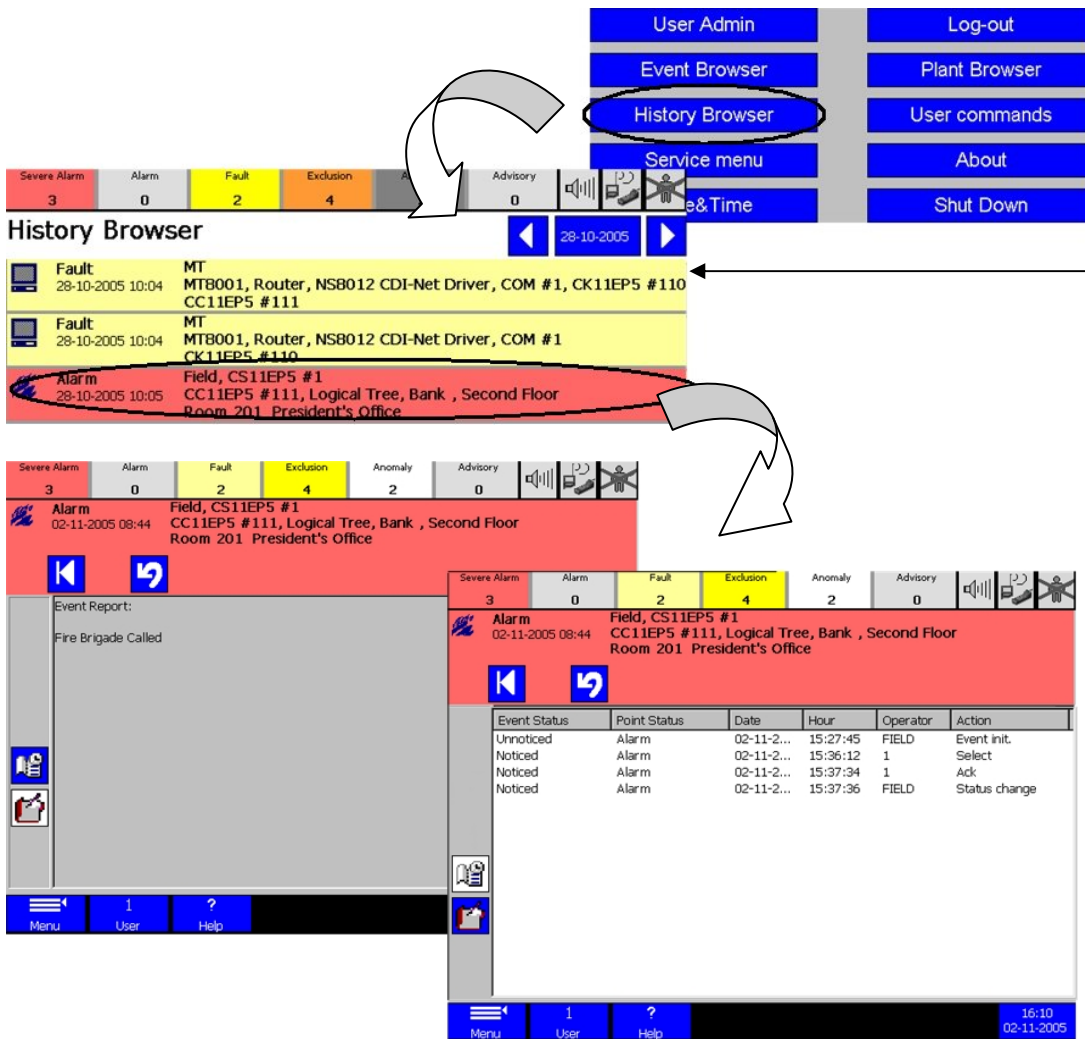


Fig. 5 Report page

Fig. 6 Protocol page

Select:	To:
	See the Event list for the previous day or the next day, respectively.
	Display the calendar, then touch the date you want to view.
	Return to the main Menu.
	Go to the Event Browser.
	Go back to the History Browser page.

# Commands and user feedback messages

Go to the User commands page from the main Menu. This is where you easily and quickly perform complex commands configured specifically for you.

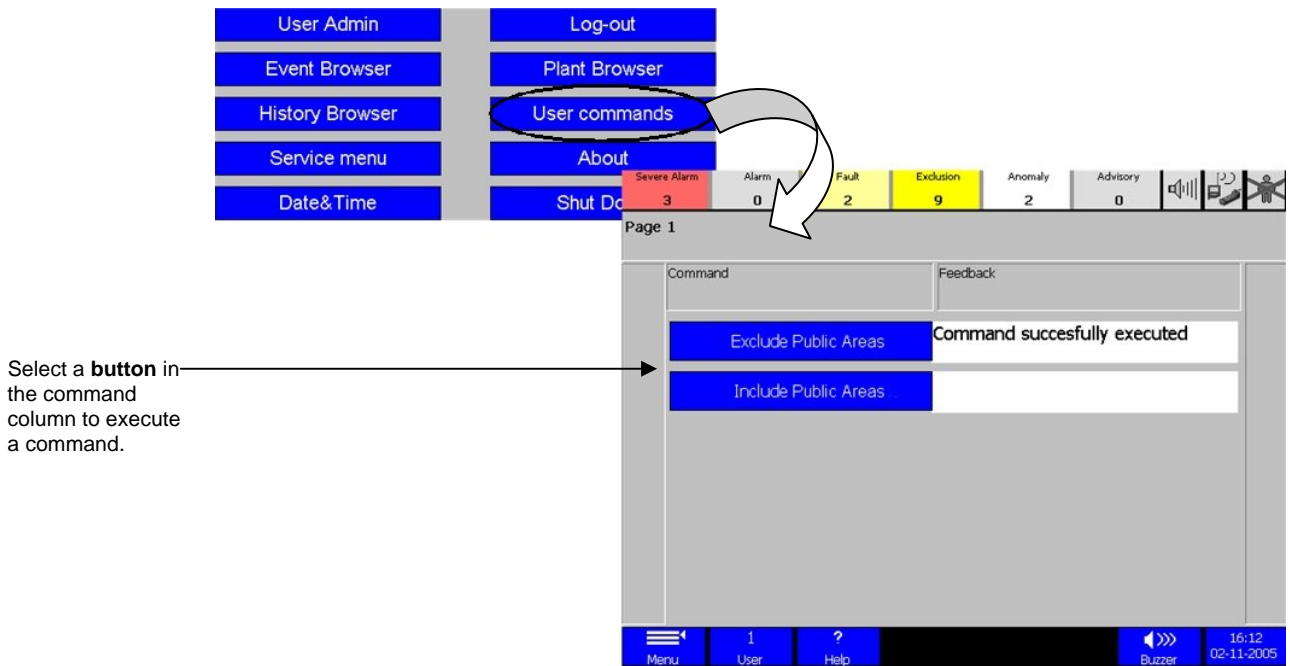


Fig. 7 User commands page

The Feedback column tells you the status of the command you sent. Some examples are:

- Command sent = command is being executed
- Command successfully executed = all macros in the command executed
- Command timeout = command not successfully executed – select the **Rollback** button (see below)



If you see the Rollback button appear in place of the command button you pressed, select it. This button only appears when a command was partially executed but not completely.

Normally, when this button appears, you will see *Command timeout* in the Feedback column. *Rollback* resets all detectors that may have been changed back to their original settings – that is, before you issued the command.

# System tests

Go to the Service menu page from the main Menu. This is where you check if different parts of the system are functioning properly.

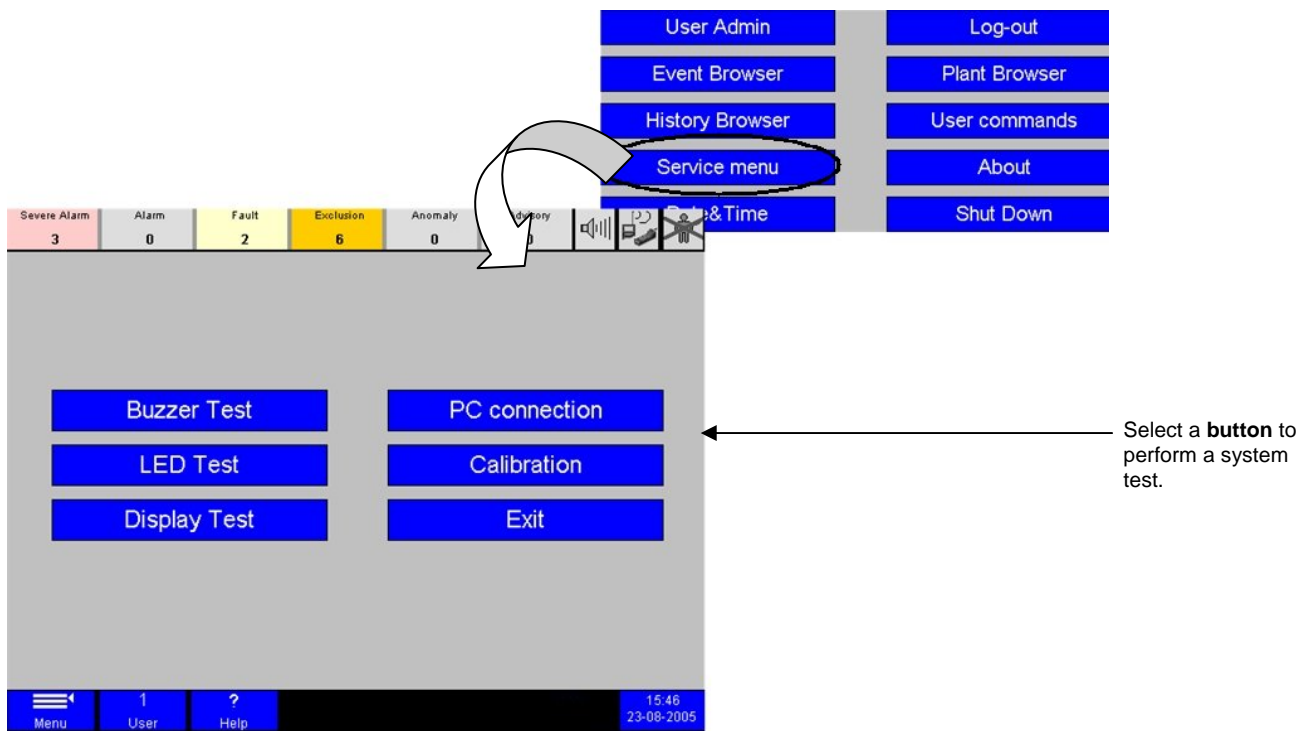


Fig. 8 Service menu page