

SIEMENS



MT8001 MP4.20-01 Management Terminal

Release Notes

Data and design subject to change without notice. / Supply subject to availability.

© 2010 Copyright by
Siemens Switzerland Ltd

We reserve all rights in this document and in the subject thereof. By acceptance of the document the recipient acknowledges these rights and undertakes not to publish the document nor the subject thereof in full or in part, nor to make them available to any third party without our prior express written authorization, nor to use it for any purpose other than for which it was delivered to him.

Table of contents

1	Introduction	4
1.1	What's new in MP4.20.01 releases.....	4
1.2	What's new in MP4.20 releases.....	4
1.3	Configuration tools	4
1.4	Approvals	4
1.4.1	Localisation.....	5
1.5	MP4.20-01 defect correction.....	5
1.6	MP4.20 defect correction	5
2	Subsystem equipment and connectivity	8
3	Installing configuration tools.....	8
4	Migrating from previous releases	9
4.1	Update procedure from MP1.01.....	9
4.2	Update procedure from MP1.10 / 1.20	9
4.3	Update procedures from MP3.15 / MP4.15	10
4.3.1	Updating the configuration data.....	10
4.3.2	Updating the CompactFlash files using ActiveSync.....	10
4.3.3	Updating the CompactFlash files using a Card Reader	11
5	Known issues in MP4.20	12
6	Documentation	13
6.1	Sales documentation	13
6.2	Technical documentation	14
7	Customer support links & resources.....	16
7.1	MT8001	16
7.2	Microsoft.....	16
7.2.1	General support.....	16
7.2.2	Microsoft ActiveSync®.....	16
7.3	Adobe Acrobat	16

1 Introduction

DMS8000 software **MP4.20-01** is now available for MM8000, MK8000, MT8001, and NK8000 products.

These release notes provide the characteristics of the new MT8001 terminal, including bug corrections and known issues. We recommend reading this document carefully before installing and using the software.

1.1 What's new in MP4.20.01 releases

NK8000

- Support for new NK8232 and NK8235 units.
In this version, the new units behaves exactly as NK8222 and NK8225, respectively. The following limitations applies to this release:
 - No LON and CS6 Guarto support.
 - BACnet upstream connectivity is not available.
 - Network-wide interactions are not supported.
 - No support for local I/O (DF8020 and DF8040) on the local I²C bus.
 - No support for XLS fire control unit.

1.2 What's new in MP4.20 releases

This section details the differences between the new MP4.20 and the previous version MP4.15. These include:

- Support for XLS V6.0 fire control unit.
- Alignment with Composer and NK8000 MP4.20.
- Improvements in software functions for approval-related issues.

1.3 Configuration tools

MT8001 MP4.20 is compatible with WW8000 Composer MP4.20. This allows the MT8001 Management Terminal to be present in MM8000 MP4.20 projects. MP4.15 projects can be modified by Composer MP4.20 without updating to MP4.20.

→ For details on installing the configuration tools, see section 3.

1.4 Approvals

Fire protection approvals

The MT8001 is designed to comply with the Underwriters Laboratories of Canada (ULC) standards (ULC-S 559-04 and ULC-S 527-99) as an operating terminal for CZ10 and XLS fire detection subsystems.

The MT8001 is also designed to comply with the European Standard EN54-2 Norm as a secondary operating terminal for CS11 AlgoRex and FC700A fire detection subsystems. However the relevant **VdS certificate (G 294042) expires on 1 Aug 2009 and will not be updated for MT8001.**

1.4.1 Localisation

A new localisation kit is available for MT8001 MP4.20. In general, the localisation process did not change in comparison with previous version.



We recommend **installing the localised MT8001 texts before starting any project configuration**. In fact, a large number of localised texts are instantiated when you create a new Composer project. Failing to localise the MT8001 environment in advance will result in additional translation activities required on the final project texts.

1.5 MP4.20-01 defect correction

Here below is the list of defects corrected in MP4.20-01.

ID	Found in	Module	Description	Help desk ID
FSP00074635	MP4.20	MK7022 Com- poser tool	Support for MK7022 local addresses above 832. Also repaired in <i>MM8000 MP 4.20 - Hotfix #16</i>	186757
FSP00073546	MP4.20	MT8001	Series of user commands on the MT80001: only the first 10 user commands are executed. Also repaired in <i>MM8000 MP 4.20 - Hotfix #05</i>	182262
FSP00073587	MP4.20	MT8001	MT8001: ULC and STANDARD mode: CZ10 Detection Device off while in Alarm not treated correctly. Also repaired in <i>MM8000 MP 4.20 - Hotfix #05</i>	182428
FSP00073547	MP4.20	MT8001	MT8001: after switching to the default level 0, no access is possible to runtime commands. Also repaired in <i>MM8000 MP 4.20 - Hotfix #05</i>	182265
FSP00073536	MP4.20	MT8001 Com- poser tool	Problems in downloading XML configuration to MT8001. Also repaired in <i>MM8000 MP 4.20 - Hotfix #05</i>	-
FSP00076315	MP4.20	NK8000	NK8000 SETUP does not include CNAP converter DLL. This causes a fault in the NK8000 Network Driver startup.	-
FSP00073231	MP4.20	NK8000	Troubles with NK8225 FW MP4.20 Build 04 in large configurations (BigFoot testing). Also repaired in <i>MM8000 MP 4.20 - Hotfix #04</i>	179271
FSP00073226	MP4.20	XNet Composer tools	XNET integration with both MM8000 and MT8001 does not work properly. Also repaired in <i>MM8000 MP 4.20 - Hotfix #12 (and in Hotfix#03)</i>	-
FSP00074200	MP4.20	XNet Composer tools	It is required to import modules, sub-modules and devices objects for Xnet subsystem. Also repaired in <i>MM8000 MP 4.20 - Hotfix #12</i>	185324

1.6 MP4.20 defect correction

Here below is the list of defects corrected in MP4.20.

ID	Found in	Module	Description
FSP00067988	MP4.15	Composer	Cannot open 4.10/3.20 projects with Product Service key.
FSP00066936	MP4.15	Composer	Occasional Composer crash (efeC2 MFC Application fault).
FSP00067317	MP4.15	Composer	Occasional Composer client crashes.
FSP00067383	MP4.15	Composer	NK822x Composer tool performs a check that is not required when linked to NS8012 driver.
FSP00067375	MP4.15	Composer, License	After the warning message about Service key expiration, Composer does not start properly.

ID	Found in	Module	Description
FSP00067274	MP3.20-04	CS11	CS11 Import procedure: in some cases, zones with structure 1699 should be imported.
FSP00067268	MP3.20-04	CS11	Error in CC11 re-import procedure using the same import file.
FSP00065227	MP4.15	CS11	Anomaly event required when an interactive AlgoRex board is excluded.
FSP00069668	MP4.15-01	CS11	CS11 EP7: import of Sinteso detectors does not work correctly
FSP00067326	MP4.10-02	CS6	The move function of a CS6 zone causes the deletion of the link in the map
FSP00067280	MP4.10-02	Graphics	Manual pages with small size may be not correctly managed at run-time.
FSP00065541	MP4.15	Graphics	Troubles in editing map points (Efe2 MFC application fault).
FSP00064129	MP4.15	Graphics	Errors in adding/changing layers and depths of a map
FSP00067309	MP4.15	Graphics	Problems in Mapmaker when changing properties of an object
FSP00067322	MP4.15	Graphics	Map Maker: align center horizontally does not work from menu and toolbar
FSP00067331	MP4.15	Graphics	Map backgrounds become empty after a map upgrade.
FSP00067384	MP4.15	Graphics	Mapmaker gets the node description instead of the point description.
FSP00065222	MP4.15	Graphics	Background layer text mixed up in the map.
FSP00068452	MP4.15-01	Graphics	Mapmaker crash if a 2-state button is set to Default Size.
FSP00063687	MP4.15	License Key	Occasional errors in reading the hardware key.
FSP00067329	MP4.15	MT8001	Restoring or opening an existing MT8001 project some folders from the XMLOutput are deleted. This causes a corrupted configuration download (MT8001 no longer starts) in case the download is done without perform the XML preparation again.
FSP00066032	MP4.15-01	MT8001 Firmware	During event treatment, the terminal erroneously shows "Please Ack" until the event is reset.
FSP00066074	MP4.15-01	MT8001 Hardware	MT8001: SanDisk 256MB CompactFlash Card (A5Q00019021) no longer available.
FSP00067363	MP4.15-01	MT8001, Localization	MT8001 is no longer able to load the correct language file if it is different from English ("MT8001Res409.dll").
FSP00067312	MP4.15	MT8001, SI410	The partition object of the SI410 has wrong conditions in the related MT8001 XML file. The Unack status (value 3) is missed. The result is that an Unack Alarm on the partition cannot be treated as it is not possible acknowledge it.
FSP00067315	MP4.10-02	NK8000	Web Server does not show correct information.
FSP00067401	MP4.10-02	NK8000	Troubles with "Keep Alive" watchdog
FSP00067267	MP4.10-02	NK8000	Changing the settings of NK82xx communication protocols may not result in the configuration download tick being removed.
FSP00067834	MP4.10-02	NK8000	Reset of NK822x not recognized.
FSP00066323	MP4.10-02	NK8000	Support of NK823x products in DMS8000 MP4.10.
FSP00070400	MP4.15	NK8000	LED H6 (2-flash error) is never activated (documentation update).
FSP00067316	MP4.15	NK8000	Interactions on NK822x do not support Ack/Reset commands. Errors is still present and documented in Release Notes/Known issues.

ID	Found in	Module	Description
FSP00067381	MP4.15	NK8000	NK8225 does not communicate with DF8003 over RS485 connections.
FSP00067410	MP4.15	NK8000	Modify the documentation to show how customize the IIS service security.
FSP00065559	MP4.15	NK8000, DF8000	Problems with DF8000 I/O units after a project download.
FSP00072013	MP4.15	NK8000, SI410	SI410 input states not aligned on MM8000.
FSP00067405	MP4.10-02	SI410	Proper support of SI410 E-bus devices.
FSP00067282	MP4.10-02	SI410	Sintony Uploader does not import E-Bus Transponders.

2 Subsystem equipment and connectivity

Control units	Notes about latest version supported	Connectivity and configuration notes	Further info. in DMS8000 documentation
XLS	V6.0	via NK822x /NK823x	Network, Fire & Intrusion Connectivity Guide: A6V10062425_a_en
CS11 AlgoRex® EP5 and EP7 FC700A	EP7F Z1, Z2, Z3	Direct link, Cerloop, and NK822x / NK823x	Network, Fire & Intrusion Connectivity Guide: A6V10062425_a_en
STT11		Cerloop and NK822x / NK823x	Network, Fire & Intrusion Connectivity Guide: A6V10062425_a_en
CZ10	Communication board Eprom: CZAX22.41 (Cerban) CZAX23.41 (Cerloop)	Cerloop and NK822x / NK823x	Network, Fire & Intrusion Connectivity Guide: A6V10062425_a_en
CC60	Eprom in U2 position: CCG001.05 (-19)	Cerloop and NK822x / NK823x	Network, Fire & Intrusion Connectivity Guide: A6V10062425_a_en
CS440	Communication board Eprom: CK440 V9 - CKP041.01 (HEX)	Cerloop and NK822x / NK823x	Network, Fire & Intrusion Connectivity Guide: A6V10062425_a_en
CS6 Quarto™	MP3 MP3+	Via NK822x	Network, Fire & Intrusion Connectivity Guide: A6V10062425_a_en
SI410/420 Intrunet (formerly Sintony)	Firmware F8-04, F8-05 and F09	Via NK822x / NK823x	Network, Fire & Intrusion Connectivity Guide: A6V10062425_a_en
DMS7000 units: MM/MF-7033 etc.		Cerloop and NK822x / NK823x	Network, Fire & Intrusion Connectivity Guide: A6V10062425_a_en
DF8000/CF9000 I/O (DF8003 or CF9003 + DF8020/8040/8045/8046)	NK8000 MP4.20 + DF8003 can support higher baud rate (up to 19200 baud)	Via NK822x / NK823x	Network, Fire & Intrusion Connectivity Guide: A6V10062425_a_en DF8000 ICC: A6V10081388_a_en

Tab.1. Subsystem equipment, versions supported and connectivity

3 Installing configuration tools

Install the configuration tools as follows according to the appropriate scenario:

- MT8001 with MM8000:
Install complete MM8000 software MP4.20.
Install ActiveSync V3.8.



Note: MT8001 and MM8000 projects cannot presently be merged – two separate projects are required.

- MT8001 without MM8000:
 - a. Install Composer and MT8001 tools MP4.20 (select the **MT8001 Add-on** installation option).
 - b. Install ActiveSync V3.8.

4 Migrating from previous releases

4.1 Update procedure from MP1.01

Composer projects generated in MP1.01 cannot be used with later versions of the MT8001. An entire new 4.20 configuration needs to be entered in the new Composer, reproducing what was done for the 1.01 version.

4.2 Update procedure from MP1.10 / 1.20

Existing MT8001 1.10 / 1.20 projects must first be updated to MP3.15 before updating to MP4.20 following the procedure below.

1. Install the Composer MP3.15 configuration tool.
2. Start Composer and select 'Restore' in the welcome window.
3. Select the project you want to upgrade.
Composer automatically detects an old MT8001 project.
4. When prompted, select 'Upgrade' in the pop-up window.
Note: If you do not upgrade now, you may do it later by selecting the upgrade function in the MT8001 node → Node tab.
5. Select the following node in the Composer tree:
...MT8001\Router\Connection driver\MT8001\CS6...
6. Write down the CS6 configuration parameters shown in the Node tab (Subnet / Node / Logical Address).
7. Repeat for each CS6 unit in the project.
8. Delete the driver by selecting:
...MT8001\Router\Communication driver
And then press CTRL-DEL.
9. Add an NK8223/NK8225.
10. Link the CS6 node(s) to the LON part of the NK822x.
→ To learn how to do this, see the DMS8000 Network, Fire & Intrusion Connectivity Configuration Guide (STEP #A6V10062425).
11. Re-enter the CS6 parameters (see step 5 above).
12. Add the NS8012 CDI-Net driver to the MT8001 router.
13. Link the NK822x serial port (typically COM1) to the NS8012 driver.
14. Proceed with the preparation and transfer of your configuration to the MT8001.



Note: The NK822x local configuration must be downloaded via a LAN network link.

→ See the NK8000 Installation Configuration & Commissioning manual (Doc. no. A6V10062437).

4.3 Update procedures from MP3.15 / MP4.15

Existing MT8001 MP3.15/MP4.15 projects can be updated to MP4.20 first updating the configuration data, and then the firmware.

4.3.1 Updating the configuration data

1. Install the configuration tools according to section 3.
2. Restore the project.
3. When requested, upgrade the XML.
4. When the project opens, select a map and then **Upgrade Map** (MP3.15 only). Repeat this step for all maps.
5. Proceed with the preparation and transfer of your configuration to the MT8001, according to either section 4.3.2 or 4.3.3.

Firmware for MT8001 MP3.15/MP4.15 units can be updated to 4.20 following one of the following procedures (use of keyboard is no longer required):

4.3.2 Updating the CompactFlash files using ActiveSync

1. Get the CD with new firmware files. Note the files and folder structure of the MT8001 CompactFlash:
 - \NK.BIN
 - \CEBOOT.SYS
 - \PREVBOOT.SEC
 - \MT8001\HISTORY\... (History archive)
 - \MT8001\COMMUNICATIONLAYER\... (Data and program files)
2. Restart MT8001.
3. During the start-up phase, the **Start ActiveSync** window will display. Click the **OK** button to start the connection.
4. In a short time start the ActiveSync connection from your PC.
5. When connected browse the MT8001 files.
6. If you **do not** need the current history archive, proceed as follows:
 - a. Delete the **MT8001** folder with all its files and subfolders.
 - b. Copy the entire new set of files of new MP4.20 firmware into the MT8001.If you **do** want keep the history data, proceed as follows:
 - a. In the folder **MT8001**, delete the **CommunicationLayer** folder, only.
 - b. Copy the **CommunicationLayer** folder from the new MP4.20 firmware into **MT8001** folder.



Carefully check that the files and folders structure matches the structure reported above and shown in Fig. 1 (the NK.bin and BOOT.SYS files must be present in the CompactFlash root directory).

7. Reboot the MT8001 and let the application start-up.
8. Proceed with the download of your configuration to MT8001.



Never reboot the MT8001 without the files 'BOOT.SYS' and 'NK.bin', or your terminal will be not able to start up again.

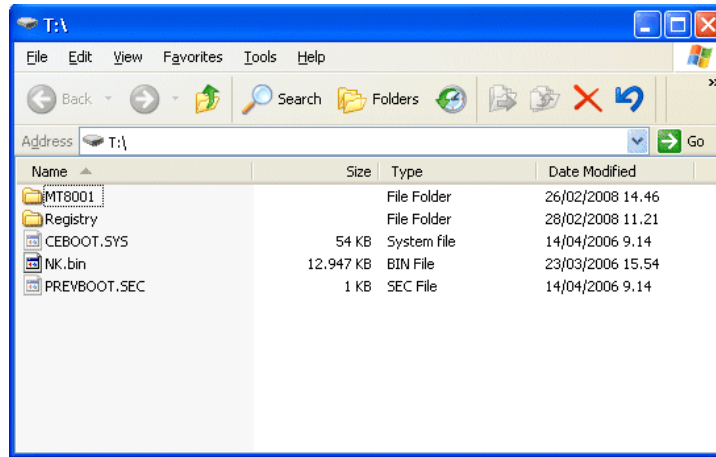


Fig. 1 File and folder structure

4.3.3 Updating the CompactFlash files using a Card Reader

1. Get the CD with new firmware files. Note the files and folder structure of the MT8001 CompactFlash:
 - \NK.BIN
 - \CEBOOT.SYS
 - \PREVBOOT.SEC
 - \MT8001\HISTORY\... (History archive)
 - \MT8001\COMMUNICATIONLAYER\... (Data and program files)
2. Power off the MT8001.
3. Unplug the CompactFlash from the MT8001.
4. Insert the CompactFlash into your Card Reader and connect it to your PC.
5. Select the disk drive related to your MT8001 CompactFlash.
6. If you **do not** need the current history archive, proceed as follows:
 - a. Delete **MT8001** folder with all its files and subfolders.
 - b. Copy the entire new set of files of new MP4.20 firmware into the MT8001.
 If you **do** want keep the history data, proceed as follows:
 - a. In the folder **MT8001**, delete the **CommunicationLayer** folder, only.
 - b. Copy the **CommunicationLayer** folder from the new MP4.20 firmware into **MT8001** folder.



Carefully check that the files and folders structure matches the structure reported above and shown in Fig. 1 (the NK.bin and BOOT.SYS files must be present in the CompactFlash root directory).

7. Release the Card Reader from your PC (using the Safely remove USB device) and take out your MT8001 CompactFlash.
8. Insert the CompactFlash into your MT8001 Terminal and power it on.
9. Proceed with the download of your configuration to MT8001.



Never reboot the MT8001 without the files 'BOOT.SYS' and 'NK.bin', or your terminal will be not able to start up again.

5 Known issues in MP4.20

The following is a list of known limitations, problems and bugs, and recommended practises regarding MP4.20 at the time of this market package release.

→ For customer support links, see section 7.1 on page 16.

- The printer is not supervised.
- In some cases, users configured to be unable to close events can close them as the close icon erroneously becomes active.
- Occasionally the Properties page is not refreshed after a user sends a command. In order to refresh the page (to display the new command that should have appeared), the user must close the Properties page and re-open it.
- EN54 (VdS): When a Severe alarm occurs, the immediate display of the Event list does not occur when:
 - The date & time window is open.
 - During a Display Test activated from the Service menu. Also, when the Display Test has completed, the Service menu remains on the screen.

The user will be aware of a new Severe alarm by the sound of the buzzer and the corresponding flashing event counter, however the Event list will not automatically display. After one or the other of the above-mentioned windows is closed, the user must select the Event Browser button to display the Event list.

- SI410/420 Intrunet
 - The SI41x control unit should be configured to enable the Partition setting while in power supply and communication failure conditions.
 - No commands are supported for “Room” objects.
 - Modifications to the control unit via local terminal configuration should be disabled in order to prevent inconsistencies with the MT8001 database.
 - The LSN-Bus option is currently not supported by MT8001 (the import procedure fails).

6 Documentation

All documents were updated to include the new features added in MP4.20.


Note the document numbers related to the new STEP numbering.

STEP documentation repository

On the Siemens intranet, the product documentation can be found in the STEP Documentation Repository. The STEP Web Client interface is available at the following address:

<https://workspace.sbt.siemens.com/content/00001123/default.aspx>

The following describes one way to search and find a document:

1. Click on the "STEP WEB Client" image: 
2. Choose "04 Fire -3F" from the "Product Segment" box and select "Activate filter".
3. Select "All" in the Documents section of the Quick Search page and select "Advanced Search".
4. Enter the document number in the "Brochure No." field (e.g. A6V10062509) and press "Enter".

Note: STEP provides no results when the number of found objects is equal to or greater than 200.

→ To learn about other ways to locate a document, see DMS8000 Quick Reference Guidelines for Search and Finding DMS Documents in STEP (A6V10064704).



Note: MP4.20 documentation is delivered in PDF format only. You can find Word versions of all documentation in the STEP repository.

6.1 Sales documentation

Product Datasheet (document no. A6V10096155_a_en)

A brief summary of the features provided by the MT8001, available architectures, and networks and subsystems supported. Ordering information is also included.

System Description (document no. A6V10096189_a_en)

This document is similar to the datasheet, but very much expanded, and more detailed. It describes the MT8001 system user interface functionality, product configuration, available architectures, and subsystems supported.

DMS8000 Application Planning (document no. A6V10063710_a_en)

This global document contains a brief discussion of product marketing strategy for all FS-DMS products, and a moderate level of detail about the architectural configurations supported by the MT8001 MP4.20.

Sales Presentation (document no. A6V10096173_a_en)

This is a brief PowerPoint presentation that can be used as is, or modified for client presentations. It provides an overview of the MT8001 system.

Sales Guide (document no. A6V10096197_a_en)

This document contains background information about the target market for the MT8001, potential pitfalls to avoid, and some sales arguments.

Tender Specifications (document no. A6V10096200_a_en)

This document is currently in the standard Siemens format, but it is designed for use and adaptation(s) by independent contractors responsible for selecting and managing the installation and upgrades of a security system for the final customer.

6.2 Technical documentation

Release Notes (document no. A6V10065354_a_en)

This document. It includes all information concerning MP4.20.

MT8001 Installation, Configuration and Commissioning (ICC, document no. A6V10096181_a_en)

This guide was developed for commissioning engineers and technicians. The ICC guide contains information about system limits, and hardware and software requirements. It provides step-by-step procedures for installation and configuration of the MT8001. During configuration, this manual should be used in tandem with the DMS8000 Connectivity Configuration guides.

DMS8000 Network, Fire, and Intrusion Connectivity Configuration Guide (document no. A6V10062425_a_en)

Designed for commissioning engineers and technicians, the global DMS8000 Connectivity Configuration guide was created for use with all FS-DMS products. Since the configuration process for networks and subsystems in Composer is the same for all products in the DMS8000 family, those configuration procedures are in this document. It should be used in tandem with the MT8001 Installation, Configuration & Commissioning guide.

DMS8000 Graphical Map Configuration Guide (document no. A6V10062441_a_en)

This document describes the graphic configuration tool (MapMaker), which is common to both MT8001 and MM8000.

Localisation guide (document no. A6V10096138_a_en)

This guide provides assistance with the localisation of the MT8001 software, including information about using Catalyst.

MT8001 Operation Manual (document no. A6V10096185_a_en)

This manual describes how to operate the Management Terminal. The target audience is end users.

Quick reference guides

These concise, convenient guides are designed to serve as “memory-joggers” when configuring or operating the MT8001. The quick reference guide set includes:

- Composer Configuration (document no. A6V10067783_a_en)
- Graphical Map Configuration (document no. A6V10069550_a_en)
- Operation (document no. A6V10096142_a_en)

History viewer (document no. A6V10096164_a_en)

This is a guide to using the Event History application that is included with the MT8001 Management Terminal. It details how to transfer history log data from the MT8001 Management Terminal to a PC, and how to use the tool for data analysis and management.

7 Customer support links & resources

7.1 MT8001

Our Customer Support Centre intranet site at:

https://intranet10.sbt.siemens.com/about_bt/Business_Units/fs/Customer+Support+Center/?languagecode=en

provides useful information and links. In the Online Support section of this intranet page, software downloads and known product issues can be found in the PSP (password-protected Product Support Platform).

→ The support mailbox is: fs.support.sbt@siemens.com.

7.2 Microsoft

7.2.1 General support

General support about Microsoft Windows can be found at:

→ <http://support.microsoft.com/directory/>

7.2.2 Microsoft ActiveSync®

In order to install the MT8001 plug-ins correctly, you must have installed ActiveSync on your PC first. Currently, the supported ActiveSync for the MT8001 MP4.20 is version 3.8 (refer to the DMS8000 CD).

7.3 Adobe Acrobat

To view the MT8001 technical and operation manuals, you need to install the Adobe Acrobat Reader application. You can download a free version of this software from:

→ <http://www.adobe.com/products/acrobat/readstep.html>

Siemens Switzerland Ltd
Building Technologies Group
International Headquarters
Fire Safety & Security Products

Gubelstrasse 22
CH-6301 Zug

Tel +41 41 724 24 24
Fax +41 41 724 35 22

www.sbt.siemens.com