

SIEMENS



MM8000 MP4.20-01 Management Station

Release Notes

Data and design subject to change without notice. / Supply subject to availability.

© 2010 Copyright by
Siemens Switzerland Ltd

We reserve all rights in this document and in the subject thereof. By acceptance of the document the recipient acknowledges these rights and undertakes not to publish the document nor the subject thereof in full or in part, nor to make them available to any third party without our prior express written authorization, nor to use it for any purpose other than for which it was delivered to him.

Table of contents

1	Introduction	2
1.1	MP4.20-01 at a glance.....	2
1.2	MP4.20 at a glance	2
2	What's new in MP4.20-01 releases	3
2.1	New MP4.20-01 features	3
2.2	MP4.20 features.....	3
2.2.1	Localisation	4
2.3	Defect corrections	5
2.3.1	MP4.20-01 defect corrections	5
2.3.2	MP4.20 defect correction	6
2.4	Summary of connectivity options	12
2.5	Summary of Add-on modules	13
2.6	Subsystem compatibility summary.....	14
2.6.1	SiPass	16
2.6.2	Video	17
3	Installation and configuration procedures.....	18
3.1	Software installation.....	18
3.1.1	New systems: installing MP4.20 and then MP4.20-01	18
4	Updating from older releases	20
4.1	Software License.....	20
4.2	Localisation	20
4.3	Updating from MP2.xx	20
4.4	Updating from MP3.xx and 4.1x.....	20
4.5	Updating from MP4.20	21
5	Known issues in MP4.20-01	22
5.1	Installation	22
5.2	Configuration.....	24
5.3	Functionality	26
6	Documentation	31
6.1	DMS8000 Documentation Resource Information & Glossary	31
6.2	MM8000 Sales documentation	31
6.3	MM8000 Technical documentation.....	32
7	Customer support links & resources.....	34
7.1	Siemens BT FS.....	34
7.2	Microsoft.....	34
7.3	Adobe Acrobat	34

1 Introduction

DMS8000 software **MP4.20-01** is now available for MM8000, MK8000, MT8001, and NK8000 products.

These release notes provide the characteristics of the new MM8000 software, including bug corrections and known issues. We recommend reading this document carefully before installing and using the software.

1.1 MP4.20-01 at a glance

MP4.20-01 adds to MP4.20 the following features and corrections:

- Support for new NK823x units (NK8232, NK8235) with the limitations described in 2.1 below.
- Defect corrections as documented in 2.3.1 below

1.2 MP4.20 at a glance

MP4.20 includes new features and a number of bug-corrections. At a glance, the new MM8000 feature list includes:

- Support for FS20 MP2.1 fire control unit over BACnet/IP connection
- Support for Cerberus PRO FS720 MP1XS fire control unit over BACnet/IP
- Support for SPC6000 MP1.1 Intrusion control unit IP connection
- Support for XLS V6.0 fire control unit via NK822x
- Support for SiPass MP2.50 (although final release due by August 2009 could not be tested) and Entro model devices
- Support for Windows Server 2008
- ULC compliance: specialized event categories, modified event list priorities and filter control, primary/secondary station roles
- Enhanced support of CCTV functions
- Various improvements to the MM8000 event treatment
- Various improvements to the configuration tools

MK8000 MP4.20 OPC server includes support for FS20 MP2.1, FS720 MP1XS and SPC6000 MP1.1.

→ See MK8000 MP4.20 Release Notes

MT8001 MP4.20 Management Terminal includes support for XLS V6.0 fire control unit via NK822x and alignment with Composer and NK8000 MP4.20.

→ See MT8000 MP4.20 Release Notes

NK8000 MP4.20 provides new NK823x hardware.

→ See NK8000 MP4.20 Release Notes

2 What's new in MP4.20-01 releases

This section presents the detailed enhancements provided in the new MM8000 software.

2.1 New MP4.20-01 features

MM8000

- Optimised support for **1280x800** screen resolution.

NK8000

- Support for new **NK8232** and **NK8235** units.
In this version, the new units behave exactly as NK8222 and NK8225, respectively. The following limitations applies to this release:
 - No LON and CS6 Guarto support.
 - BACnet upstream connectivity is not available.
 - Network-wide interactions are not supported.
 - No support for I/O modules (DF8020 and DF8040) on the local I²C bus.
 - No support for XLS fire control unit.

2.2 MP4.20 features

New connectivity

- **FS20** fire systems MP2.1 over BACnet/IP
- Cerberus PRO **FS720** fire systems MP1XS over BACnet/IP
- **SPC6000** MP1.1 intrusion control unit via IP connection
- **XLS/XNET** V6.0 fire system via NK822x
- **SiPass** MP2.50 (although final release due by August 2009 could not be tested), including Entro devices: ACC-lite, DC12/DC22, DC800, PD30/40, IOR6.
- Latest **SISTORE** models (see below)

New Operating System support

- Support for **Windows Server 2008** SP1

Compliance with ULC (Underwriters Laboratories of Canada) norms

- In ULC mode, **new event categories** (Fire Alarms, Emergencies, Supervisory, Building Safety, Trouble, Exclusion, Advisory) replace the standard MM8000 events.
- In the event list, **older events** have higher priority.
- **Event filters** are automatically removed when a filtered-out event needs to be presented.

Further common features related to ULC compliance

- Primary client station: in multiple-client systems, a station can be dynamically assigned the **primary** role, defined to be the only one enabled to transmit commands to control units. This feature is mandatory in ULC mode, but it can also be used for non-ULC systems.

CCTV functions

- Dome/PTZ Camera **preset position** upon event generation/treatment (for both SISTORE and NICE/RIVER)
- Various **quad view** improvements, including easier camera selections using mouse commands, enhanced camera name display, automatic selection of single vs. quad view depending on the configured associations, and customised quad view settings saved for each user.

- New **ODR** (Object Detection and Removal) alarms from SISTORE CX.
- Support for **RIVER** video systems.
- Improved NICE/RIVER diagnostics with new **Disk Anomaly** and **Sabotage** events.

MM8000 event treatment

- Security: support for more detailed **access rights** (visibility, fast and assisted treatment) for individual event categories.
- **Event list printout** function.
- Support and coordination for **simultaneous treatment** from multiple clients.
- Mandatory fields in operating procedure report step

Composer and configuration tools

- **Keyboard shortcuts** to insert and copy/paste nodes as well as for selecting panes.
- Graphics Maps:
 - Use of **CTRL** key to select and then deselect (toggling) objects for multiple selections.
 - Note the new maximum limit of **200 layers** on a map.
 - Point symbols show in **grey colour** if the associated property event category is set to None.
- Enhanced **Engineering Tools** for:
 - Changing MM8000 PC **network names**
 - Enabling/Disabling **ULC mode**

Miscellaneous

- FS20: new **Section Test** command.
- Optimised support for **2560x1600** screen resolution.
- **Text search** function in Plant Browser
- Camera/monitor **switch** commands in reactions and sequences.
- OPC client models: support for **Manual Call Points** objects.
- OPC client configuration: faster association settings thanks to a new **multiple-item selection**.
- **Password** of default user (auto-logout Dixie_User) has been changed.
- Improved support of **moved/renumbered objects** after re-importing data structures linked in geographical trees.

Software License

- New **MP4.20 License** is required.

2.2.1 Localisation

A new localisation kit is available for MM8000 MP4.20. In general, the localisation process did not change in comparison with previous version.



We recommend **installing the localised MM8000 texts before starting any project configuration**. In fact, a large number of localised texts are instantiated when you create a new Composer project. Failing to localise the MM8000 environment in advance will result in additional translation activities required on the final project texts.

2.3 Defect corrections

Here below are the lists of corrected defects.

2.3.1 MP4.20-01 defect corrections

ID	Found in	Module	Description	Help desk ID
FSP00076055	MP4.20	Graphics	AutoCAD drawings using TrueType fonts are not correctly managed by MM8000 (texts not readable). Also repaired in <i>MM8000 MP 4.20 - Hotfix #21</i>	164006
FSP00071510	MP4.15-01	Client Framework	Problems in advanced event treatment. It occurs when starting the client and sometimes when changing user. It can be removed by double clicking on an event. Also repaired in <i>MM8000 MP 4.20 - Hotfix #18</i>	173629
FSP00071673	MP4.15-01	Client Framework; Summary Bar	Support for double monitor vertical setting. Also repaired in <i>MM8000 MP 4.20 - Hotfix #18 and in Hotfix #10</i>	173879
FSP00073586	MP4.20	Communication driver (CNAP converter)	ULC MODE CZ10 Detection Device off while in Alarm is not shown correctly in MM8000. Also repaired in <i>MM8000 MP 4.20 - Hotfix #08</i>	182485
FSP00076418	MP4.20	Communication driver (CNAP converter)	With two points (CZ10 detectors) one in Fault and the second in Severe Alarm (Active status customized in SevereAlarm) configured in a map it happens that the status propagated to the higher map is the Fault and not the Severe Alarm like expected. The reason is that the Severe Alarm does not have treatment commands associated because is it the active of the element.	1-1328497086
FSP00074802	MP4.20	Communication driver (NDSI)	MM8000: occasional problems in sending out commands to SI410. Also repaired in <i>MM8000 MP 4.20 - Hotfix #17</i>	188464
FSP00067832	MP4.15-01	CZ10 Composer tool	CZ10 Integration: increase limit of devices per loop from 50 to 60 (for MXL/Smartlink 4 support with CZ10 emulation). Also repaired in <i>MM8000 MP 4.20 - Hotfix #05 and Hotfix#08</i>	-
FSP00075099	MP4.15-01; MP4.20	History	Printout of History Report no longer available. Also repaired in <i>MM8000 MP 4.20 - Hotfix #19</i>	189737
FSP00075101	MP4.15-01; MP4.20	History	HSRegistrations transaction log file is not reduced enough after a History Back-up. Also repaired in <i>MM8000 MP 4.20 - Hotfix #19</i>	189952
FSP00077044	MP4.20	History	History SQL back-up file grows too much into MM8000 folders. The "HSRegistrations_log" back-up file saved to reduce the size of the log file is not deleted after that the History back-up is completed.	1-1352509928
FSP00077223	MP4.20	History	Cannot print Hebrew characters in history report printouts.	1-1328444700
FSP00071962	MP4.15-01	Event treatment HTML Snapin	Problems when clicking within the advanced event treatment (HTML step) Program no longer responds. Also repaired in <i>MM8000 MP 4.20 - Hotfix #13 (or MM8000 MP 4.15-01 – MP 4.20 - Hotfix #54 for PCC)</i>	174913
FSP00073016	MP4.20	Installation	Support for 1280x800 Graphic Resolution	179843
FSP00074635	MP4.20	MK7022 Composer tool	Support for MK7022 local addresses above 832. Also repaired in <i>MM8000 MP 4.20 - Hotfix #16</i>	186757
FSP00072741	MP4.15-01	MM8000 Server	Events are still visible in Maintenance mode after disabling maintenance mode on all the subsystems. Also repaired in <i>MM8000 MP 4.20 - Hotfix #02</i>	178222
FSP00072742	MP4.15-01	MM8000 Server	Desigo PX in maintenance mode are still visible in runtime mode. Also repaired in <i>MM8000 MP 4.20 - Hotfix #02</i>	178229
FSP00076315	MP4.20	NK8000	NK8000 SETUP does not include CNAP converter DLL. This causes a fault in the NK8000 Network Driver startup.	-
FSP00076320	MP4.20	NK8000	NK8000 driver: problem in field connection with large configuration projects.	-
FSP00073231	MP4.20	NK8000	Troubles with NK8225 FW MP4.20 Build 04 in large configurations (BigFoot testing). Also repaired in <i>MM8000 MP 4.20 - Hotfix #04</i>	179271

What's new in MP4.20-01 releases

FSP00077126	MP4.15	NK8000	Problems with configurations including STT20 (wrong configuration file). Also repaired in <i>MM8000 MP 4.15-01 - Hotfix #64</i>	1-1356387504
FSP00073138	MP4.20	DESIGO PX	Release Command for Desigo PX does not work correctly. Also repaired in <i>MM8000 MP 4.20 - Hotfix #07</i>	180366
FSP00076378	MP4.20	Reaction Server	VBScript in MM8000 sequence: in a MM8000 sequence configured to launch VBScript, the instructions after the VBScript are not executed. The sequence stops after the script.	1-1332759925
FSP00076251	MP4.20	Sipass	MM8000 MP4.20 and Sipass 2.35 build 55: Alignment of configuration often fails.	1-1322351659
FSP00075522	MP4.15-01; MP4.20	Sistore	MM8000 + SISTORE CX: After ack/reset on a Video Input, EDS motion alarm exclusion fails ("command not executed"). Also repaired in <i>MM8000 MP 4.20 - Hotfix #20</i>	185101
FSP00069148	MP4.15-01	Summary Bar	Troubles switching between maintenance/realtime mode. Also repaired in <i>MM8000 MP 4.20 - Hotfix #18 and in Hotfix #10</i>	166772
FSP00074248	MP4.20	Summary Bar	It is not possible to edit the Sipass login when the Sipass is launched from MM8000 summary bar menu. Also repaired in <i>MM8000 MP 4.20 - Hotfix #18 and in Hotfix #10</i>	-
FSP00073535	MP4.20	System Supervisor	Support of ULC Compliant Hardware (COMARK computer with a special ISA board for system monitoring). Also repaired in <i>MM8000 MP 4.20 - Hotfix #09</i>	-
FSP00073226	MP4.20	XNet Composer tools	XNET integration with both MM8000 and MT8001 does not work properly. Also repaired in <i>MM8000 MP 4.20 - Hotfix #12 (and in Hotfix#03)</i>	-
FSP00074200	MP4.20	XNet Composer tools	It is required to import modules, sub-modules and devices objects for Xnet subsystem. Also repaired in <i>MM8000 MP 4.20 - Hotfix #12</i>	185324
FSP00072484	MP4.20	Documentation: Localization Guide	Catalyst V4 cannot be used any more for MM8000 localization. That was not documented in MP4.20.	-

2.3.2 MP4.20 defect correction

ID	Found in	Module	Description
FSP00067269	MP4.10-02	Alarm Print-out	Alarm print-out procedure stops working after the restart of MM8000 servers.
FSP00066612	MP4.15	Alarm Print-out	Alarm Print-out blocks after 2-3 weeks of operation.
FSP00066046	MP4.15	Alarm Print-out	Alarm printout does not work correctly if 2 printers are used.
FSP00067400	MP4.15	Alarm Print-out	The external HTML attachment has to be printed directly into the Alarm printout HTML layout.
FSP00067325	MP4.15	Alarm Print-out	Alarm Print-out in Windows Vista do not work correctly after changing MM8000 internal account.
FSP00070172	MP4.15-01	Alarm Print-out	Alarm printout: map page may be truncated.
FSP00067273	MP3.20-04	CC60	The CC60 vitality message generates an error log in the event viewer.
FSP00067283	MP3.20-04	Composer, CS6	Occasional CS6 import procedure failures.
FSP00063685	MP4.10-02	Composer	Poor Composer performance in linking subsystems to the NS8210 driver.
FSP00067275	MP4.10-02	Composer	Restoring 3.20 projects: error detected while reading data from Server.
FSP00067277	MP4.10-02	Composer	Composer Search function does not work.
FSP00067279	MP4.10-02	Composer	Composer erroneously reports a "Last User action failed" error copying operating procedures with a sub-tree folder.
FSP00067308	MP4.10-02	Composer, License	Composer starts even if Keys or PAKs are not present.
FSP00067375	MP4.15	Composer, License	After the warning message about Service key expiration, Composer does not start properly.
FSP00067796	MP4.15	Composer	Project can't be downloaded.

What's new in MP4.20-01 releases

FSP00067988	MP4.15	Composer	Cannot open 4.10/3.20 projects with Product Service key.
FSP00066671	MP4.15	Composer	The STT11 import procedure does not work properly.
FSP00066790	MP4.15	Composer	Cannot modify the Composer configuration of Organisation mode & Typical week.
FSP00066936	MP4.15	Composer	Occasional Composer crash (efeC2 MFC Application fault).
FSP00067072	MP4.15	Composer, FS20	Composer configuration for FS20: SiB-X import sometimes fails.
FSP00067297	MP4.15	Composer, FS20	The order with which you can "tab" through the BACnet Parameters of the driver is not sequential.
FSP00066081	MP4.15	Composer, SI410	Re-import of SI410 configuration: points get linked to the wrong geographical tree object.
FSP00067289	MP4.15	Composer	Occasionally, download activation may hang.
FSP00067317	MP4.15	Composer	Occasional Composer client crashes.
FSP00067342	MP4.15	Composer	When MM8000 client is closed, the Composer application is also closed, even during a download, if it was started from within MM8000.
FSP00067348	MP4.15	Composer	Composer very slow in linking and expanding large SiPass doors tree.
FSP00067378	MP4.15	Composer	NS8210: Problems with incremental download
FSP00067383	MP4.15	Composer	NK822x Composer tool performs a check that is not required when linked to NS8012 driver.
FSP00067390	MP4.15	Composer	On some Marathon-based installation, Composer does not always start properly.
FSP00068751	MP4.15	Composer	The Composer fails to handle maps in projects from previous versions.
FSP00066372	MP4.15	Composer	Composer alignment of SiPass no longer possible.
FSP00068848	MP4.15-01	Composer	Composer slows down in case of large configurations.
FSP00068636	MP4.15-01	Composer	Problems in downloading specific projects.
FSP00064379	MP4.15	Composer, CP100	Problems in handling CP100 maps.
FSP00070695	MP4.15	Composer, Operating procedures	Improved configuration of steps to prevent description texts from being accidentally overwritten.
FSP00070841	MP4.15	Composer, Operating procedures	Operating procedure scope does not work properly.
FSP00067271	MP3.20-04	Composer, Geographical Tree	"Use Default" and "Enable Auto Assignment" options are not updated in the geographical tree grid view.
FSP00067272	MP3.20-04	Composer, Graphics	Project cannot be downloaded. An error in the map causes the activation failure (PageMngServer reports a depth query failure).
FSP00068967	MP4.15-01	Composer, Graphics	Slow Composer performances in handling a 220-point map.
FSP00067274	MP3.20-04	CS11	CS11 Import procedure: in some cases, zones with structure 1699 should be imported.
FSP00067268	MP3.20-04	CS11	Error in CC11 re-import procedure using the same import file.
FSP00065227	MP4.15	CS11	Anomaly event required when an interactive AlgoRex board is excluded.
FSP00069668	MP4.15-01	CS11	CS11 EP7: import of Sinteso detectors does not work correctly
FSP00071640	MP4.15	CS11	"Propagated advisory" is not available on the CC11 "manual zone" whereas it is correct for "single" and "multi zone".
FSP00067380	MP4.15	CS4	CS4 configuration: import procedure fails to import a CS4 list-file.

What's new in MP4.20-01 releases

FSP00067326	MP4.10-02	CS6	The move function of a CS6 zone causes the deletion of the link in the map
FSP00071424	MP4.15	CS6	Troubles after CS6 zones change parent section.
FSP00067300	MP4.10-02	DESIGO PX	Unidentified event erroneously generated during DESIGO PX status requests.
FSP00067330	MP4.15	DESIGO PX	An unidentified event is needed to indicate that the running configuration is not consistent.
FSP00067323	MP4.15	DESIGO PX	Cannot reset DESIGO PX alarms.
FSP00071198	MP4.15-01	DESIGO PX	Connection problems with DESIGO PX units ("trying to connect" condition does not go away)
FSP00063686	MP4.15	Dialer	The Active X control used in the dialer step display an information saying that it is an evaluation copy and that the trial time is expired.
FSP00067305	MP4.15	DMS Contacts	Various improvements in the DMS8000 contacts tool
FSP00067357	MP4.15	DMS Contacts	DMS8000 Contacts: contact details not shown.
FSP00067358	MP4.15	DMS Contacts	DMS8000 Contacts: multi selection is required.
FSP00067389	MP4.15	DMS7000, Geograph.tree	Import of DMS7000 system in geographical tree fails.
FSP00067343	MP4.15	Documentation	Various user documentation defects and feedbacks from training sessions.
FSP00067404	MP4.15	Documentation	Document the OPC Client station limitations on the MM8000 Datasheet.
FSP00067276	MP3.20-04	Documentation, Journaling	Journaling server does not start with "print directly to the printer" and printer fault. Errors is still present and documented in Release Notes/Known issues/Functionality.
FSP00067379	MP4.15	Documentation, MK8000	Error in "FC20 MK8000 Interface Spec" document.
FSP00067386	MP4.15	Documentation, MK8000	Error in "SIMATRIX Integrated MK8000 Interface Spec" document.
FSP00068782	MP4.15	Documentation, SMS	Document the SMS length issue. A reduction of message length is caused by the system which requires some characters for info related to event.
FSP00070039	MP4.15	Documentation, Release Notes	Missing Information about latest version supported.
FSP00071179	MP4.15	Double screen	Problems in starting external applications on the second screen.
FSP00067324	MP3.20-04	Event Treatment	When a filtered event is acknowledged, the event apparition time is erroneously replaced by the acknowledge time.
FSP00067310	MP4.15	Event Treatment	The Automatic treatment "by notification" does not work properly.
FSP00067313	MP4.10-02	Event Treatm., Operating Proc.	Event treatment cannot be closed with CCTV step configured as optional.
FSP00065576	MP4.15	FS20	Status of FDCIO222/223 not always clear.
FSP00065583	MP4.15	FS20	FS20 Sprinkler Alarm not correctly shown on MM8000.
FSP00067394	MP4.15	FS20	FS20 Technical alarm cannot be reset.
FSP00067284	MP4.10-02	Geographical Tree	Even when a subsystem is set as "Out of Scan", the geographical tree may show elements and zones.
FSP00065223	MP4.15	Geographical Tree	Refresh problem, the link icon is missing in the logical tree for "Light video Nodes" linked in the Geographical tree. This problem occurs when you link those points from the grid, while if you copy them from the project tree it works fine.
FSP00069268	MP4.15	Geographical Tree	Wrong order of geographical tree in MM8000 with MK8000 support.
FSP00067327	MP4.15	Geographical Tree	Node command export point not available in the geographical tree, resulting menu is always empty.
FSP00067345	MP4.15	Geographical Tree, SI410	If a SI410 partition is linked to a geographical tree room and it is in "partially Off", its status is not correctly propagated to the upper levels.

FSP00067280	MP4.10-02	Graphics	Manual pages with small size may be not correctly managed at run-time.
FSP00067290	MP4.10-02	Graphics	Map size not recalculated changing the Plant Browser view.
FSP00065541	MP4.15	Graphics	Troubles in editing map points (Efe2 MFC application fault).
FSP00067525	MP4.15	Graphics	Problems in handling maps with 100 or more layers.
FSP00064129	MP4.15	Graphics	Errors in adding/changing layers and depths of a map.
FSP00067299	MP4.15	Graphics	On Windows Vista, the frame of a point in a map disappears after a "Zoom in" or "Zoom out".
FSP00067309	MP4.15	Graphics	Problems in Mapmaker when changing properties of an object
FSP00067322	MP4.15	Graphics	Map Maker: align center horizontally does not work from menu and toolbar
FSP00067331	MP4.15	Graphics	Map backgrounds become empty after a map upgrade.
FSP00067384	MP4.15	Graphics	Mapmaker gets the node description instead of the point description.
FSP00065222	MP4.15	Graphics	Background layer text mixed up in the map.
FSP00068452	MP4.15-01	Graphics	Mapmaker crash if a 2-state button is set to Default Size.
FSP00067784	MP4.15	Graphics, Geographical tree	Map problems when a node is deleted in the geographical tree: when a node is deleted in the geographical tree, the map where the node is placed on gets a faulty appearance.
FSP00067247	MP3.20-04	History	History does not work correctly in case "." (dot) character is present in the event location.
FSP00067314	MP4.10-02	History	History erroneous logs related to change of status information
FSP00066153	MP4.15	History	History auto-archive does not work properly.
FSP00067320	MP4.15	History	History Browser crash upon starting a new query.
FSP00067359	MP4.15	History	History browser: string not correctly visualized with the Italian localization.
FSP00068381	MP4.15	History, Localization	Retrieval of history DB does not show Chinese letters.
FSP00070218	MP3.20-04	History	History browser crash during restore process.
FSP00071330	MP4.15	History	Cannot restore history backup.
FSP00070961	MP4.15-01	History	Problems in restoring MP4.10 history backups.
FSP00067374	MP4.15	License	Wrong subsystem and point license calculation with points set as "Out of scan".
FSP00067303	MP4.10-02	License Key	Double hardware key support.
FSP00063687	MP4.15	License Key	Occasional errors in reading the hardware key.
FSP00064123	MP4.15	Line Monitor	Line Monitor error.
FSP00067281	MP4.15	Line Monitor	Line monitor application does not support NS8011/BACnet.
FSP00067307	MP4.15	Localization	Problems in supporting the Latvian language.
FSP00067334	MP4.15	Localization	Hebrew characters not displayed correctly.
FSP00067543	MP4.15-01	Localization	The language INI file no longer includes the language code IDs, thus causing that some MM8000 languages cannot be correctly installed.
FSP00067364	MP4.15	MK8000	MK8000 – Export wizard does not work in case the monitor folder is present.
FSP00065366	MP4.15	MK8000, CS11	Support for status propagation of Zones to Sections.
FSP00065593	MP4.10-02	MK8000 Intrusion Panels	In MK8000, missing lock supervision status for CS6 and CS4.
FSP00069592	MP4.15	MK8000 License	Troubles with Product channel license for MK8000 stand alone.
FSP00069393	MP4.10-02	MM2000	It must be possible to link SPC ST (MM2000) under the NS8210.

What's new in MP4.20-01 releases

FSP00067350	MP4.15-01	MM2000	Various defects related to MM2000 applications.
FSP00067328	MP4.15	Modbus	MP4.10 backward compatibility not granted for Modbus add-on.
FSP00067329	MP4.15	MT8001	Restoring or opening an existing MT8001 project some folders from the XMLOutput are deleted. This causes a corrupted configuration download (MT8001 no longer starts) in case the download is done without perform the XML preparation again.
FSP00066032	MP4.15-01	MT8001 Firmware	During event treatment, the terminal erroneously shows "Please Ack" until the event is reset.
FSP00066074	MP4.15-01	MT8001 Hardware	MT8001: SanDisk 256MB CompactFlash Card (A5Q00019021) no longer available.
FSP00067363	MP4.15-01	MT8001 Localization	MT8001 is no longer able to load the correct language file if it is different from English ("MT8001Res409.dll").
FSP00067312	MP4.15	MT8001, SI410	The partition object of the SI410 has wrong conditions in the related MT8001 XML file. The Unack status (value 3) is missed. The result is that an Unack Alarm on the partition cannot be treated as it is not possible acknowledge it.
FSP00067302	MP4.15	NICE	NICE video: warning in Event Log for devices that do not exist in the Composer project.
FSP00067315	MP4.10-02	NK8000	Web Server does not show correct information.
FSP00067401	MP4.10-02	NK8000	Troubles with "Keep Alive" watchdog
FSP00067267	MP4.10-02	NK8000	Changing the settings of NK82xx communication protocols may not result in the configuration download tick being removed.
FSP00067834	MP4.10-02	NK8000	Reset of NK822x not recognized.
FSP00066323	MP4.10-02	NK8000	Support of NK823x products in DMS8000 MP4.10.
FSP00070400	MP4.15	NK8000	LED H6 (2-flash error) is never activated (documentation update).
FSP00067316	MP4.15	NK8000	Interactions on NK822x do not support Ack/Reset commands. Errors is still present and documented in Release Notes/Known issues.
FSP00067381	MP4.15	NK8000	NK8225 does not communicate with DF8003 over RS485 connections.
FSP00067410	MP4.15	NK8000	Modify the documentation to show how customize the IIS service security.
FSP00071606	MP4.15	NK8000	Using CEI protocol, after NK82xx reset, the connection erroneously reports "Not Reachable" even if the communication re-established and the NK82xx unit is identified.
FSP00072013	MP4.15	NK8000, SI410	SI410 input states not aligned on MM8000.
FSP00065559	MP4.15	NK8000, DF8000	Problems with DF8000 I/O units after a project download.
FSP00067301	MP3.20-04	Operating Procedures	E-mail operating procedure step causes an exception in the Event Server.
FSP00067270	MP4.10-02	Operating Procedures	Wrong "Release link" command is displayed in the Operating Procedure Steps
FSP00066337	MP4.15	Operating Procedures	CCTV step with execution attribute "automatic on creation" does not work correctly.
FSP00071962	MP4.15	Operating Procedures	User interface troubles upon clicking too fast in the assisted event treatment page (HTML step). A logoff / logon sequence is required to solve the problem.
FSP00067248	MP3.20-04	Plant Browser	The font used in the Plant Browser should be smaller.
FSP00067318	MP4.15	Plant Browser	In Plant Browser detail pane, the "changed at" field does not update properly.
FSP00067391	MP4.15	Plant Browser	In the Plant Browser, the aerial view is not updated correctly during the map navigation.
FSP00067376	MP4.15	Plant Browser, Localization	MM8000 does not show Plant Browser tree working with Hebrew user names.
FSP00067311	MP4.10-02	Reactions	Reaction error: the field condition of SiPass card nr is not considered.

What's new in MP4.20-01 releases

FSP00067294	MP4.15	Restart	Problems in restarting the MM8000 stations (File Distributor Manager on the Client Stations).
FSP00067304	MP4.15	RIVER	Support of River CCTV systems.
FSP00067306	MP4.15	Scheduler	Scheduler user interface improvements related to text layouts.
FSP00070739	MP4.15-01	Scheduler	Scheduler may take 99% of CPU time.
FSP00067377	MP4.15	Scheduler, Localization	Some field in the scheduler client are not big enough for localisation purposes.
FSP00063682	MP4.15	Scheduler, Security	User group permissions "5 CUSTOM", "0 NONE", "3 ACTIVE+DEACTIVE" do not work in manual and scheduled tasks.
FSP00067285	MP4.10-02	Security	Logged-on user name truncated.
FSP00067319	MP4.15	Security	Windows shortcuts not disabled in Closed mode under Vista.
FSP00067321	MP4.15	Security	F1 button in closed mode may allow unauthorized access.
FSP00067403	MP4.15	Security	Dual Monitor under Windows Vista: locked system + closed mode does not work.
FSP00067405	MP4.10-02	SI410	Proper support of SI410 E-bus devices.
FSP00067282	MP4.10-02	SI410	Sintony Uploader does not import E-Bus Transponders.
FSP00066005	MP4.15	SIGMASYS	SIGMASYS import procedure: Technical text of some elements is not imported.
FSP00070769	MP4.15	SIGMASYS	Missing extinguishing pre-alarm events.
FSP00067253	MP3.20-04	SiPass	The SiPass simulator does not work if the PC network cable is unplugged.
FSP00067256	MP4.10-02	SiPass	Improved warning message in case SiPass not aligned and more than one SiPass is configured.
FSP00067291	MP4.15	SiPass	"Turnstile, single door contact" point not correctly imported.
FSP00066388	MP4.15	SiPass	SiPass V2.35: Composer project download fails.
FSP00067409	MP4.15	SiPass	Picture missing in the Access Control Connectivity guide.
FSP00067265	MP4.10-02	System Monitor	System Monitor dialog boxes cannot be localized.
FSP00067288	MP4.10-02	Video	Light video integration in MM8000: refresh problem of Live video snap-in icon.
FSP00066935	MP4.15	Video	Video camera association algorithm does not work correctly.
FSP00067360	MP4.15	Video	SISTORE AX: wrong camera diagnostic upon camera fault events.
FSP00067414	MP4.15	Video	Support the new SISTORE AX 3.6 remote viewer version.

2.4 Summary of connectivity options

Network	Notes	Further info. in DMS8000 documentation
Direct serial links: – CS11 AlgoRex© (via CK1142) – FC700A (via FG700A) – SI410 Intrunet (formerly Sintony) – CC1115 / FC330A	Support of SMN42/43	Network, Fire & Intrusion Connectivity Guide: A6V10062425_a_en
LAN links: – Siemens CCTV: SISTORE, TELSCAN, IP Cameras – Geutebrück MultiScope – SiPass Access control – DESIGO PX – FS20/FS720 MP2.1 – NICE CCTV – SPC6000	New in MP4.20: support for connectivity to SPC6000 MP1.1 build 21 intrusion control unit	Network, Fire & Intrusion Connectivity Guide: A6V10062425_a_en
– Cerloop	-	Network, Fire & Intrusion Connectivity Guide: A6V10062425_a_en
– CDI-Net – NK8000 via serial link	-	Network, Fire & Intrusion Connectivity Guide: A6V10062425_a_en
NK8000 LAN: – NK8222 – NK8223 – NK8225 – NK8232 – NK8235	– New in MP4.20: NK822x can support connectivity to XLS fire control unit – New in MP4.20-01: NK823x units	Network, Fire & Intrusion Connectivity Guide: A6V10062425_a_en NK8000 Installation, Configuration & Commissioning: A6V10062437_a_en
OPC links: – SIMATIC S7 – RCO R-Card M5	-	

Tab.1 Network options

Peripheral equipment	Notes	Further info. in DMS8000 documentation
SMS service over GSM: – Siemens Modem M20 – Siemens Modem MC35	-	MM8000 Installation, Configuration & Commissioning: A6V10062413_a_en
E-mail/SMS service over e-mail: – POP3 service provider	-	MM8000 Installation, Configuration & Commissioning: A6V10062413_a_en
Paging system: – ESPA 4.4.4 system	ASCOM, Novalink,& Telepage systems have been tested	

Tab.2 Peripheral equipment and services

2.5 Summary of Add-on modules

Add-on	Installation kit	Connectivity	Distribution
- Autronica BSxx Fire Control Units	V4.20	NK8000	Distributed as separated module
- CDDL-CDSF Units	V4.20	NK8000	Distributed as separated module
- CP100 Gas Detection Unit	V4.20	NK8000	Distributed as separated module
- DLCS Door Control System	V4.20	OPC	Installed with base setup
- Geutebrueck Video Units	V4.20	LAN	Installed with base setup
- LIST SCU 2000 Fire Control Units	V4.20	NK8000	Distributed as separated module
- MAXSYS PC601 Intrusion Control Unit	V4.20	NK8000	Distributed as separated module
- Modbus Units	V4.20	NK8000	Distributed as separated module
- NICE Video Units	V4.20	LAN	Installed with base setup
- R Card M5 Access Control System	V4.20	OPC	Distributed as separated module
- CS1115 / FC330A via NK8000	V4.20-01	NK823x	Distributed as separated module

When installed with MM8000 MP4.10 and later, all Add-on modules (any version) must be installed using the Add-on Manager function as described in the MM8000 ICC manual (document no. A6V10062413_a_en).

2.6 Subsystem compatibility summary

Control units	Notes about version supported	Connectivity and configuration notes	Further info. in DMS8000 documentation
FS20 Sinteso	MP1.3 and MP2.1	LAN	Network, Fire & Intrusion Connectivity Guide: A6V10062425_a_en
FS720 Cerberus PRO	MP1XS	LAN	Network, Fire & Intrusion Connectivity Guide: A6V10062425_a_en
CS11 AlgoRex® EP5 and EP7 FC700A	EP7F Z1, Z2, Z3	Direct link, Cerloop, and NK8000	Network, Fire & Intrusion Connectivity Guide: A6V10062425_a_en
CS1115 Phase 4 FC330A Phase 4	CISxx8.86	Direct link	Network, Fire & Intrusion Connectivity Guide: A6V10062425_a_en
SIGMASYS D100	SIGMASYS V3.5 D100 V40-2	NK8000	Network, Fire & Intrusion Connectivity Guide: A6V10062425_a_en
STT11		STT2410 and STT20 via NK822x	Network, Fire & Intrusion Connectivity Guide: A6V10062425_a_en
STT2410 / STT20		via NK8000	Network, Fire & Intrusion Connectivity Guide: A6V10062425_a_en
CZ10	Eprom on communication board: CZAX22.41 (Cerban) CZAX23.41 (Cerloop)	Cerloop and NK8000	Network, Fire & Intrusion Connectivity Guide: A6V10062425_a_en
CC60	Eprom in U2 position: CCG001.05 (-19)	Cerloop and NK8000	Network, Fire & Intrusion Connectivity Guide: A6V10062425_a_en
CZ12	Eprom on communication board: BKB002.08	Cerloop and NK8000	Network, Fire & Intrusion Connectivity Guide: A6V10062425_a_en
CS4	Eprom on communication board: CK402 V6B – CKP003.01 (BCD) CK430 V9 – CKP041.01 (HEX)	Cerloop and NK8000	Network, Fire & Intrusion Connectivity Guide: A6V10062425_a_en
CS440	Eprom on communication board: CK440 V9 – CKP041.01 (HEX)	Cerloop and NK8000	Network, Fire & Intrusion Connectivity Guide: A6V10062425_a_en
XLS	V6.0	via NK8000 (NK822x)	Network, Fire & Intrusion Connectivity Guide: A6V10062425_a_en
CS6 Quarto™	MP3 MP3+	via NK8000 (NK822x)	Network, Fire & Intrusion Connectivity Guide: A6V10062425_a_en
SI410/420 Intrunet (no encryption)	Firmware F8-04, F8-05 and F09	Direct link, NK8000, and IP connection	Network, Fire & Intrusion Connectivity Guide: A6V10062425_a_en
SPC6000 Intrunet	MP1.1 Build 21	LAN	Network, Fire & Intrusion Connectivity Guide: A6V10062425_a_en
DMS7000 units including MM-IE2		Cerloop and NK8000	Network, Fire & Intrusion Connectivity Guide: A6V10062425_a_en
SIPASS™	→ See 2.6.1 below	LAN	AC Connectivity Guide: A6V10062451_a_en
SIMATRIX 164; 648; SYS, SIMATRIX NEO, NEO 2.0		via NK8000	Video Connectivity Guide: A6V10062457_a_en
SISTORE AX / MX / MX Pro / CX /SX DVR	→ See 2.6.2 below	LAN	Video Connectivity Guide: A6V10062457_a_en
TELSCAN		LAN	Video Connectivity Guide: A6V10062457_a_en
Stand-alone IP cameras (TELSCAN protocol)		LAN	Video Connectivity Guide: A6V10062457_a_en
DF8000 I/O (DF8003 or CF9003 + F8020/8040/8045/8046)		via NK8000	Network, Fire & Intrusion Connectivity Guide: A6V10062425_a_en DF8000 ICC: A6V10081388_a_en
Geutebrück CCTV MultiScope™ II Plus and III	→ See 2.6.2 below	LAN - Manual installation of Composer plug-in	Geutebrück CCTV Add-on manual: A6V10067796_a_en
Philips/Burle CCTV (LTC 8x00)		via NK8000	Video Connectivity Guide: A6V10062457_a_en
SIMATIC S7		LAN / OPC	OPC Connectivity Guide: A6V10065253_a_en
DLCS door control system (via WinCC OPC server)	WinCC V6.0 SP2	LAN - Manual installation of Composer plug-in	DLCS Add-on manual: A6V10067792_a_en
Autronica BSxxx	V3.20	via NK8000 - Add-on package is required	Autronica BS Add-on manual 008750_b_en
LIST SCU 2000 (field test only)	SCU 2000	via NK8000 - Add-on package is required	LIST Add-on manual 009248_a_en
MAXSYS PC6010	V2.11	via NK8000 - Add-on package is required	MAXSYS Add-on manual 008751_b_en

CP100	Cpa402c	via NK8000 - Add-on package is required	CP100 Add-on manual 009848_a_en
Modbus-based subsystems	V1.1a. One connection (no cluster) in RTU mode (no ASCII).	via NK8000 - Add-on package is required	Modbus Add-on manual A6V10067800_a_en
Fibrolaser II Modbus		via NK8000 - Add-on package is required	Modbus Add-on manual A6V10067800_a_en
CDDL/CDSF-based subsystems	CDDL V1.0 CDSF all variants	via NK8000 - Add-on package is required	CDDL/CDSF Add-on manual A6V10067787_a_en
NICE DVR	→ See 2.6.2 below	LAN - Add-on package is required	NICE Add-on manual A6V10097205_a_en

Tab.3 Subsystem equipment

2.6.1 SiPass

The following table shows the compatibility between MM8000 and SiPass versions:

Compatibility matrix:

MM8000	SiPass 2.2	MP2.3 Build 18	MP2.3 Build 21	MP2.35 Build 38	MP2.35 Build 41/52	MP2.40 (*) Build 37/41	MP2.50 (*) Build 39
MP3.15	Yes	No	No	No	No	No	No
MP3.15-01	No	Yes	No	No	No	No	No
MP3.15-02	No	No	Contact support	No	No	No	No
MP3.20	No	No	Yes	No	No	No	No
MP3.20-01/-02	No	No	No	Yes	No	No	No
MP3.20-03/-04	No	No	No	Yes	Yes	No	No
MP4.10	No	No	No	Yes	No	No	No
MP4.10-01	No	No	No	Yes	Yes	No	No
MP4.10-02	No	No	No	Yes	Yes	No	No
MP4.15	No	No	No	Yes	Yes	Yes	No
MP4.20 / 4.20-01	No	No	No	Yes	Yes	Yes	Yes

The following table shows the characteristics of the integrated solutions:

#	Description	MM8000 3.15 SiPass 2.2	MM8000 3.15-xx SiPass 2.3	MM8000 3.20 SiPass 2.3	MM8000 3.20-xx SiPass 2.35	MM8000 4.10-xx SiPass 2.35	MM8000 4.15 SiPass 2.40	MM8000 4.20 SiPass 2.50
1	MM8000 replaces the SiPass related event management	Yes	Yes	Yes	Yes	Yes	Yes	Yes
2	AC users & permissions in SiPass launched by MM8000	Yes	Yes	Yes	Yes	Yes	Yes	Yes
3	Door statuses avail.in MM8000 text pages & graphics: Door Alarm (unique event for Door Forced or Held) Door Forced Door Held Door Locked / Unlocked Output Active / Inactive Input/Output Tamper Device Faults (except for Readers) Duress alarm Pass-back input Tamper/Status (REX button) Reader Fault and Tamper	Yes No No Yes Yes Yes Yes No No No	No Yes Yes Yes Yes Yes Yes Yes Yes Yes	No Yes Yes Yes Yes Yes Yes Yes Yes Yes	No Yes Yes Yes Yes Yes Yes Yes Yes Yes	No Yes Yes Yes Yes Yes Yes Yes Yes Yes	No Yes Yes Yes Yes Yes Yes Yes Yes Yes	No Yes Yes Yes Yes Yes Yes Yes Yes Yes
4	Control commands avail. in MM8000 text pages & graphics: Door Lock / Unlock (propagated on the geograph.tree) ... Allow Access Output Activate / Deactivate	Yes Yes Yes	Yes Yes Yes	Yes Yes Yes	Yes Yes Yes	Yes Yes Yes	Yes Yes Yes	Yes Yes Yes
5	Support for ACC controllers..... Support for CC30 CerPass controllers.....	Yes No	Yes Contact support	Yes Yes	Yes Yes	Yes Yes	Yes Yes	Yes Yes
6	Store events+security-relevant AC transactions in MM8000 history DB. The transaction list includes: Access Denied (Zone Violation & HW Anti-pass back) Access Granted (not tracked by default)	Yes Yes	Yes Yes	Yes Yes	Yes Yes	Yes Yes	Yes Yes	Yes Yes
7	Limit in number of devices configured in FLN lines	32	253	253	253	253	253	253
8	SiPass transactions can trigger MM8000 reactions	No	No	No	No	Yes	Yes	Yes
9	Support for BLN and IS bus objects	n/a	No	Yes	Yes	Yes	Yes	Yes
10	Support for FLN3a and FLN3b bus objects	n/a	No	Yes	Yes	Yes	Yes	Yes
11	Multiple SiPass systems connected to one MM8000	No	No	No	Yes	Yes	Yes	Yes
12	Events for Door locked and access denied causes	No	No	No	No	No	Yes	Yes
13	New objects in SiPass MP2.35/2.40/2.50 and SiPass Entro	No	No	No	No	No	No	Yes

Tab.4 SiPass compatibility matrix

(*) New SiPass releases may be available. Please check latest compatibility information on PSP.

2.6.2 Video

For specific support of video devices, please refer to the table below and to the corresponding [known issues](#) described on [page 28](#).

Device model	Device version/type	MM8000 Version
SISTORE AX Note that compatibility with MM8000 depends on RAS software. MM8000 MP4.15-01 supports RAS V3.6 , (note that RAS V3.5 is not supported)	V2.4.0, V2.50	MP3.15, 3.15-xx, 3.20, 3.20-01/-02/-03/-04, 4.10, 4.10-01/-02, 4.15
	V2.6.0, V2.6.1	MP3.15, 3.15-xx, 3.20, 3.20-01/-02/-03/-04, 4.10, 4.10-01/-02, 4.15
	V2.6.2	MP4.15-01, 4.20, 4.20-01
	V2.7	MP4.15-01, 4.20, 4.20-01
	V2.8	<i>Currently under test, please refer to Interoperability Matrix on PSP</i>
	V3.1	MP3.20-01/-02/-03/-04, 4.10, 4.10-01/-02, 4.15, 4.15-01, 4.20, 4.20-01
	V3.5	MP4.10-01/-02 (using RAS software V3.1 and add Admin user on SISTORE AX device ⁽¹⁾). MP4.15-01, 4.20, 4.20-01 (using RAS software V3.6) ²
	V3.6	MP4.15-01, 4.20, 4.20-01 (using RAS software V3.6 and add Admin user on SISTORE AX device)
AX lite	V2.0	<i>Currently not tested, please refer to Interoperability Matrix on PSP</i>
SISTORE MX (including NVS)	V2.55, V2.57, V2.58 ⁽²⁾ , V2.60 ⁽³⁾	MP3.15-02, 3.20, 3.20-01/-02/-03/-04, 4.10, 4.10-01/-02, 4.15, 4.15-01, 4.20, 4.20-01
	V2.70	MP4.10-01/-02, 4.15, 4.15-01, 4.20, 4.20-01
	V2.80	MP4.15-01, 4.20, 4.20-01
	V2.81	MP4.20, 4.20-01
SISTORE MX Pro	V2.45	MP3.10, 3.15, 3.15-xx, 3.20, 3.20-01/-02/-03/-04, 4.10, 4.10-01/-02, 4.15, 4.15-01, 4.20, 4.20-01
	V2.50	MP3.15, 3.15-xx, 3.20, 3.20-01/-02/-03/-04, 4.10, 4.10-01/-02, 4.15, 4.15-01, 4.20, 4.20-01
SISTORE CX/SX	V3.00, V3.01	MP3.20
	V3.1	MP3.20-01/-02/-03/-04, 4.10, 4.10-01/-02, 4.15
	V3.2	MP4.10, 4.10-01/-02, 4.15
	V3.4 ⁽⁴⁾	MP4.10-01/-02, 4.15
	V3.45	MP4.15, 4.15-01, 4.20, 4.20-01
	V3.5	MP4.15, 4.15-01, 4.20, 4.20-01
	V3.5.2	MP4.15, 4.15-01, 4.20, 4.20-01
	V3.6, 3.6.3	MP4.20, 4.20-01
TELSCAN	V2.00	<i>Not supported</i>
	V2.03A	MP3.15, 3.15-xx, 3.20, 3.20-01/-02/-03/-04, 4.10, 4.10-01/-02, 4.15
	V2.10	MP3.15-xx, 3.20, 3.20-01/-02/-03/-04, 4.10, 4.10-01/-02, 4.15, 4.15-01, 4.20, 4.20-01
Siemens IP cameras: → direct on LAN, mapped as single-line TELSCAN → via SISTORE MX	Fixed IP cameras CCIS 1337-LP, CFVA-IP, CVVA-IP Any IP camera compatible with SISTORE	MP3.15-xx, 3.20, 3.20-01/-02/-03/-04, 4.10, 4.10-01/-02, 4.15, 4.15-01, 4.20, 4.20-01 MP3.20, 3.20-01/-02/-03/-04, 4.10, 4.10-01/-02, 4.15, 4.15-01, 4.20, 4.20-01
Geutebrück MSC	V5.0 (3.613)	MP3.20, 3.20-01/-02/-03/-04, 4.10, 4.10-01/-02, 4.15, 4.15-01, 4.20, 4.20-01
NICE : NiceVision systems	V10.1, 10.5, 10.7	MP4.10-01 + NICE Add-on, MP4.15, 4.15-01, 4.20, 4.20-01
	V10.8	MP4.20, 4.20-01

Tab.5 Video units

¹ MM8000 MP4.10-xx requires the RAS software V3.1 applied to SISTORE AX V3.5 (do not use RAS V3.5). Also, in the SISTORE AX device, a new user named **Admin** (upper case initial letter and default password "12345678") should be added. In fact, the default **admin** user in SISTORE is not compatible with MM8000 settings.

² MM8000 **MP4.15-01** requires the RAS software V3.6. **Note that when a new MM8000/Windows user is defined, the RAS player must be started once as stand-alone application by this user before using it in MM8000.**

³ When using SISTORE MX V2.58 and V2.60, the Remote Viewer software version should always correspond with the DVR software version (Remote Viewer V2.58 with SISTORE MX V2.58 and Remote Viewer V2.60 with SISTORE MX V2.60).

⁴ Faults related to loss of camera signals are not supported by MM8000 with SISTORE CS/SX V3.4.

3 Installation and configuration procedures

3.1 Software installation

MM8000 MP4.20-01 is distributed as an add-on to the standard MP4.20 setup. For detailed information about the installation procedure, refer to the MM8000 ICC manual (document no. A6V10062413_a_en).

3.1.1 New systems: installing MP4.20 and then MP4.20-01

The MP4.20 installation procedure includes the following steps:

1. Check system requirements.

Note the typical required software for a stand-alone MM8000 station:

- If required, the SiPass application software should be installed before MM8000, on the same PC or on another machine in the network. If a previous SiPass version is installed, upgrading to latest software is mandatory before installing MM8000. In this case, we recommend uninstalling SiPass and then installing the newest version.
- A local or networked SQL server or SQL Data Engine (**MSDE 2000** or **SQL Server Express 2005**). Note that SiPass includes the SQL Data Engine software (MSDE 2000), which can be perfectly used by MM8000 as well. Also, be informed that, at the moment, the use of an external SQL server is not supported by SiPass, which requires a local server of its own.
- Microsoft software **.NET Framework 1.1 and 2.0** as well as **SQLXML 3.0 SP3** are required. All applications are available on the distribution CD and can be installed and used free of any license charge.
- If required, also install the video application software, according to the specific CCTV device. For detailed instructions, please refer to the related documentation.
- Other software may be required depending on the specific configuration including NK8000 networks and Alarm Printout services.
→ Please refer to the MM8000 ICC manual (doc.no. A6V10062413_a_en).

2. Log on as Administrator.

3. If an old release of MM8000 is installed (e.g. MP3.10/3.15/3.20), then you need to uninstall it and reboot the PC.

4. If SiPass will be used and an existing SQL engine is present, uninstall it.

At this point, if you need to install SiPass, you also have to remove the SQL server Data Engine previously installed by MM8000, and then delete the corresponding folder, typically C:\Program Files\Microsoft SQL Server. Note that failing to remove the previous SQL server will result in the SiPass installation not executing properly.

5. Install MM8000 software, which can be:

- Stand-alone (or Server)
- Client
- FEP
- Configuration-only (Composer)
- License station (only for redundant server systems based on Marathon EverRun)

During the software setup, you have to select the security mode (standard or restricted), the server tasks start-up mode (automatic or manual), and other installation options.

→ If you are not familiar with the setup procedure, please read section 4 of the MM8000 ICC manual (doc.no. A6V10062413_a_en) before installing the software.

6. Reboot the PC.

7. Install MP4.20-01:

- **Make sure that no MM8000 client applications are active** (including Composer and Simulation tools).
 - **Copy the MP4.20-01 setup files on a local drive**, e.g. in the folder:
`C:\MM8000_MP4.20-01_Setup\...`
 - **Launch the command: Install_DMS8000 MP4.20.01.exe** and follow the instructions on the screen.
8. Install the hardware key and enter the license code using the PAK Manager tool. Note that SiPass also requires a license option (Management Station Integration).

Notes:

- **Software License:** MP4.2 Composer and MM8000 licenses are required.
- **Localisation:** by default, the DMS8000 software is installed in English.

The installation procedure can install texts in another language as long as the required language file (LANG_XXX.ZIP) is included in the setup folder along with the other files (not provided by default).

Later on, you can modify the language using the **Language Installation** utility. See MM8000 Localisation Engineering Guide, doc.no. A6V10062459.

4 Updating from older releases

4.1 Software License

New 4.20 Composer and MM8000 licenses are required for MP4.20. Earlier licenses need to be updated.

4.2 Localisation

Referring to the localised versions, be informed that the language file (ZIP) must be updated using the MP4.20 localisation toolkit, which is new in comparison with all previous versions.

→ See MM8000 Localisation Engineering Guide, doc.no. A6V10062459.

4.3 Updating from MP2.xx

The configuration database update from MP2 releases - namely MP2.10, MP2.20, MP2.21, and MP2.30 - is possible using MM8000 MP2.31 and MP3.15 as intermediate conversion steps; see documents MM8000 MP2.31 Release Notes (008091_a_en) and MM8000 MP3.15 Release Notes (008901_a_en).

4.4 Updating from MP3.xx and 4.1x

Updating from MP3 releases (MP3.10-xx, MP3.15-xx, MP3.20-xx, and MP4.10-xx.) is possible as described in this section. You perform the following steps:

1. Make sure you have backup copies of your MM8000 project; namely:
 - Composer project backup
 - Runtime scheduler task definitions
2. Uninstall previous version and reboot.
3. If still present, delete the **C:\MM8000** or **C:\DMS8000** folder.
4. Install the new MM8000 software as described in section 3.1.
Do not forget to check the related hardware and software requirements.
5. Start Composer and restore your project
6. Open the project (note that the opening process may take quite a few minutes, especially large MP3.15 projects) and select version MP4.20.



Note: Composer is able to handle previous version projects in case you do not want to update. Updating requires both selecting the MP4.20 version upon opening (to load all the new MP4.20 tools) and then running the update commands described below..

7. In the MM8000 structure tree, select:
Supervision System Settings → MM8000 System → Logical Configuration
→ User Data
8. On the Node tab, press the button labelled **Project Update**.
The update procedure will start and may present a message window that informs you about forced modifications in the projects. A detailed log is provided in <installation folder>\Logs\NEOUPDATE.LOG.
9. The update procedure will take some minutes, depending on project size.
Please wait for the procedure to complete.
- 10.[*Database 3.15-xx and earlier only, not required for 3.20*]
In the MM8000 structure tree, select:

Supervision System Settings → MM8000 System → Logical Configuration → User Data → Graphic Maps

On the Node tab, press the button labelled **Map Update** and wait for the graphic map update procedure to complete.

11. If SiPass is used, align the access control configuration.

Different procedures are required depending on the database versions:

- **[MM8000 Database 3.15-01 and earlier only]**
the SiPass node in the Composer tree must be deleted and then created again (note that the deletion will force you to reconfigure the access control points in maps, reactions, sequences, etc.).
- **[MM8000 Database 3.15-02 and later]**
the alignment of the access control configuration is required.
- **[SiPass Database 2.30 and earlier]**
After restoring an old SiPass configuration, it is necessary to add a new user to the list of authorised operators in SiPass. The user data must be:
 - Username: SiPassUser
 - Password: SIPASSPASSWORD



It is essential to execute a SiPass database alignment before downloading a project that includes a SiPass access control system.

You can either connect to the SiPass application and then align the database (on-line mode) or import the XML database created with MP4.20 export tool.

The alignment is also necessary (typically in off-line mode) in case the SiPass unit is simulated for test/demo purposes.

→ Refer to the Access Control Connectivity Guide (A6V10062451_a_en).

12. [Database 3.1x and 3.20 (if not already done)]

Update Journaling Services. Proceed as follows:

- Select:
Supervision System Settings → MM8000 System → Logical Configuration → System Data
- Check the “Journaling Service” node: if a journaling printer is configured, note down what template is used.
- Then, delete the “Journaling Service” node and then inserted it again from the menu. That will install the latest Composer component for this function.
- If a journaling printer is used in your configuration, link the printer to the journaling to the template you took note about before deleting.

13. Download the new project.

14. If used, download the NK822x units with the latest firmware and configuration.

→ Refer to the NK8000 chapter in the DMS8000 Network Connectivity Guide (A6V10062425_a_en).

15. Close Composer.

16. Run MM8000 and restore the runtime scheduler task definitions.

4.5 Updating from MP4.20

Updating from MP4.20 only requires the installation of the MP4.20-01 service release.

Refer to the step 7 of the installation procedure described in 3.1.1 at p.18.

5 Known issues in MP4.20-01

This is a list of known limitations, problems, bugs and recommended practises at the time this software was released. Compared with previous Release Notes, new and updated points are marked by a side label for easier identification.

5.1 Installation

MS Windows 64-bit edition

Windows 2003 64-bit edition is not supported.

MS Windows Vista

The use of Windows Vista requires specific attention. Please note that:

- Vista introduced the new **UAC (User Account Control)**, a security-related feature that creates a number of warning messages. A manual UAC confirmation must be provided for MM8000 tool applications. Alternatively, UAC might be disabled. Refer to the MM8000 ICC manual (document no. A6V10062413).
- **Windows Vista Virtualization** creates a "per user" copy of system folders and registry keys and then redirects successive data operations. This feature causes no problem to MM8000 operations as long as you do not use system folders, such as **C:\Windows** or **C:\Program Files** to store any project information.
- Windows Vista does not officially support **MSDE 2000**. Use Microsoft SQL Express 2005 instead.
- On all PCs equipped with Windows Vista, we recommend to always keep a **free disk space of at least 15 GB**.
- When configuring printers in Windows Vista for MM8000 alarm printouts, make sure to **use the same name for the printer and the related Windows share**. If these names are different, the printer will not work.



Although supported by MM8000, **Windows Vista may not be compatible with other software required**, e.g. for video functions. Before choosing Windows Vista as Operating System, please check the compatibility of the complete suite of software components. This specifically concerns the current versions of SISTORE, Geutebrueck, and Nice video software.

VMware

MM8000 MP4.20 has been tested with the following virtualisation software:

- VMware Server V1.04
- VMware Workstation V5.5
- ESX V3.5

Note that the ESX virtualisation environment **does not directly support USB ports** that are needed for the MM800 license key. As recommended by VMware, the external network device AnywhereUSB® can be used to connect the USB keys.



The use of virtual machines may impose **severe limitations to live video functionalities**. Specifically, check carefully the requirements of video systems and the corresponding support in the virtual environment (e.g. DirectX support).

Troubles with the hardware key

After installation, if the PAK manager cannot recognise the HW key, the sentinel drivers may need to be installed manually.

In this case, launch the set-up located in:

<installation folder>\PAK Manager\Sentinel Drivers\SSD5411-32bit

and follow the instructions; when prompted, select the default installation.

Clear History DB

Rare cases of difficulties in the history functions have been reported after installation. In such cases, the FS-DMS support may recommend the use of the program:

<installation folder>\Utilities\ToolsUtilities\EngineeringTools.exe

This can clear (and optionally also resize) the database and solve the problem.

Windows NT 4.0 domain server

As documented in the ICC manual, MM8000 stations can work in a Windows network controlled by a domain server based on Windows 2000 or 2003 server.

In case the server runs on NT 4.0 operating system, MM8000 can still be used, but only in advanced security mode, manually managing the user list in the NT 4.0 domain server. In other words, MM8000 must first be installed in advanced mode (on Windows XP or Vista networked stations) and then MM8000 operators must be defined on the domain server as Windows users before being created and downloaded from Composer.

→ For more details about security modes, please refer to the ICC manual (A6V10062413), section 4.2.

Problems with Windows patch KB902400

In some restricted-security environments (typically within a domain), if the DCOM access has been manually limited to the Administrator group, this Windows patch may affect the DCOM settings and remove some Administrators' permissions. This results in the MM8000 software being prevented from running properly.

In case of major problems in running the MM8000 after the KB902400 patch, make sure that, in the DCOM Security setting, the Administrators group is actually enabled for all the "Access permissions".

Note that this problem does not affect the MM8000 standard security setting.

Pak Manager and 3rd-party PAK codes

Pak Manager shows the 3rd Party PAK codes only if the related Add-on is installed. Instead, if the additional software is not present, the related PAK does not appear in the list. Note also that, if you install the Add-on package after the PAK configuration, you need to re-insert the PAK's in the PAK Manager to get the correct license. Additionally, this implies to restart the MM8000 servers.

Add-on modules installation

The Third Party add-on kits released for version MP4.15 and earlier are not directly supported in MP4.20. A new version of each available add-on is available for version MP4.20.

Changing domain/PC name

MM8000 MP4.20 can support a Windows domain/PC name change on the FEP or Server after the installation. To change the name(s), use the Engineering Tools utility program (refer to the MM8000 ICC manual, document no. A6V10062415).

New in MP4.20

New in MP4.20

5.2 Configuration

New in MP4.20-01

Download failures

Repetitive download attempts may cause failures. In this case, close Composer after each download and then reopen it. Also try the **Empty Database** procedure (see <installation folder>\Utilities\Tools\Utilities\EngineeringTools.exe).

A rare download error in configurations that include video systems (VNM) can be solved by modifying the point description texts that cause the error. The download error message shows:

Module: CMDownload

Function: XMLDataTransfer

Description: Error at configuration end. VNM TVCC Devices.

Details: CServer #251701; CnodeClasses; CMethods; CMDownload #3145728.

To solve the problem, check the point description texts that include single quotes (" ' "). Note that you can limit the research in the set of points associated with a video camera. The only single quote character causing the problem is in position 50, but you may want remove all of them and make sure you get rid of the downloading problem.

Graphic tool

- CAD-based metric maps do not handle correctly the position of additional JPG or BMP images that are added to the map background. When created, metric maps may or may not be set as CAD-based, depending whether the scaling factor and the size are entered manually or taken from the imported AutoCAD drawing. In case images are used, it is recommended not to use the CAD-based option and set scaling factor and size manually.

Note that, after the creation wizard, it is not possible to change the CAD-based option, and a modification in this respect implies the creation of a new map.

- Adding CAD fonts: additional CAD fonts can be manually added in the folder <installation folder>\Resources\CADfonts (e.g. C:\MM8000\Resources\CADfonts). If not already existing, the 'CADfonts' subfolder must be created.
- DWG files including with ", " (comma) character in the file name cannot be imported. Please rename the file before importing it.
- AutoCAD images cannot be imported when a subset of the image is selected in the import wizard (red frame) that includes negative X,Y coordinates. Leaving the default frame (full picture) can work even if the image may not be centred.

New in MP4.20

DMS7000 metafile for CZ10 and CZ12

CZ10 and CZ12 customer texts (DMS7000 databases) can be imported only once. No subsequent import of CZ10 and CZ12 is possible.

CC11 AlgoRex EP7

- The following structures are imported in the logical tree but not in the physical tree:
 - 1551 - Digital output;
 - 1552 - Digital output supervised;
 - 1560 - Internal horn;
 - 1561, 1564, 1565 - External horn;
 - 1562 attribute = RTFIRE - "Alarm" remote transmission channel;
 - 1562 attribute = RTFAULT - "Fault" remote transmission channel;
 - 1562 attribute = RTOTHER - "Other" remote transmission channel.

STT20

STT20 metafile needs to be re-imported after restoring an MP 3.15 projects, else the download may fail.

Composer

- Be aware that the Composer Backup file (zip-compressed BAK file) does not include HTML pages, Address Book, and Composer templates.
- Multiple and remote clients: two Composer client stations can run simultaneously for configuration purposes on the same project, using the Composer client software and connecting, from a networked PC, to the Composer server. As for a single client, Composer requires a license + key or a Service key installed on the server machine. Note that the service key, when installed on the client PC, cannot enable the Composer client function.
→ See Composer Technical manual (A6V10062401).



Note that, given the lack of specific messaging services between multiple stations, Composer users simultaneously accessing the same project should be able to directly inform each other about activities. In fact, time-consuming tasks like importing or downloading can temporarily suspend the server availability and significantly delay the system response. In addition, simultaneous editing of the same graphic map is not allowed (modification collision is not checked and may result in loss of data).

FS20: migrating from MP4.10-02

Configurations restored from MP4.10-02 –and including some specific types of FC20 zones– need a special reworking when FS20 databases are re-imported into Composer. In that case, the FC20 Zones are deleted and then recreated as new objects. Therefore, the related links and map symbols need to be configured again. This concerns the following types of FC20 zones:

- Automatic zone ID 6 - Single, Extinguishing discharged
- Automatic zone ID 7 - Single, Extinguishing pre-alarm
- Automatic zone ID 8 - Single, Gas alarm
- Automatic zone ID 9 - Single, Gas warning
- Automatic zone ID 21 - Multi, Standard
- Automatic zone ID 102 - Single, Sprinkler alarm
- Manual zone ID 5 - Alarm Subsystem
- Technical zone ID 5 - Fault Subsystem
- Technical zone ID 7 - Fault Extinguishing System

Limitations in FS20 support

- Limitations in the support of **Technical zones** by MM8000 may occur when new customized templates (DB variants) are used to address specific needs. In these cases, MM8000 will handle the customized objects applying the standard template and incorrect texts and icons may display.

SI410 Sintony Uploader

SI410 provides one TCP port for external hosts to connect over TCP/IP network (**Sintony IP Port 2** field in the Sylcom Tool / System configuration).

In connecting to SI410 in IP mode, the Sintony Uploader makes use of this only port as the NS8014 DMS8000 driver does for the runtime connection. This implies that you need to stop the DMS8000 server software before being able to use the Sintony Uploader that applies this type of connection.

Note that the configuration of SI410 System Inputs **Main Failure** and **Bat/Fuse Fail** include the **Delay** parameter that defines a time delay in the local announcement of the power supply fault conditions (remote events on MM8000 are not affected). To prevent misalignment between local and remote events, we recommend to set this parameter to 1 sec.

New in MP4.20

5.3 Functionality

FEP stations require server when starting up

Distributed configurations including FEP stations: When you start up a FEP station, you must ensure that the MM8000 server is already up and running.

Low virtual memory events

Depending on the specific configuration and on the PC hardware characteristics, MM8000 software may use up the memory resources in Windows and cause the “Low virtual memory” error message to display. Should that occur, you can **adjust the virtual memory size** (i.e. the size of the *paging* file where Windows swaps the active memory areas on disk). Using the Administrator login, proceed as follows:

- Start → Settings → Control Panel → System → Advanced tab → Performance / Settings button → Advanced tab → Virtual Memory / Change button**
- At this point, in the disk drive list that appears, select the Windows System disk drive (typically C:) and set the size values as follows:

	Client / FEP	Stand-alone / Server
Initial size	1024 MB	2048 MB and more ⁽⁵⁾
Maximum size	4096 MB	4096 MB

Screen savers

Please abide by the following guidelines if you wish to use a Screen saver while running MM8000:

- Use only standard Windows Screen savers;
- Do not configure password protection for Screen savers.

Standard Windows Screen savers allow for the Event icon area and the Summary bar to be present while the Screen saver occupies the Work area. Failure to comply with the guidelines listed above may result in problems with the MM8000 system.

Acrobat writer/distiller

Installing MM8000 typically affects the behaviour of the Acrobat Writer/Distiller, which will not work properly any more, even uninstalling MM8000.

M35 GSM modem and character set in SMS messages

In SMS notification messages, the M35 modem (ref. M35 manual “MC35_ATC_01_V05.00”) is configured to support the GSM 03.38 (7-bit) alphabet set, which includes a minimum set of characters.

In most cases, message texts in Western languages are adapted to the GSM set, whereas other languages (e.g. Russian, Chinese, Hebrew, etc.) are not supported (note that texts including invalid characters are discarded by the modem and the related message is lost).

In general, we recommend using plain ASCII characters in SMS messages. However, the customisation of some special characters is possible in the localisation procedure. Please refer to MM8000 Localisation Engineering Guide, document no. A6V10062459_a_en.

Removing history full events

In case the SQL history archive is automatically backed up, the MM8000 events related to archive full condition are no longer necessary to notify the operator. In such cases, we recommend setting ‘out of scan’ the History node of the Station in the MM8000 Physical Structure.

⁵ Initial size may be extended up to 3000 MB in case low memory events still occur.

New in MP4.20-01

Restoring history archives: SQL version compatibility

MM8000 history archive can work with both SQL 2000 and SQL 2005 versions. However, not all the combination of the two versions can be supported as far as the history archive backup and restore are concerned. More specifically, you can backup SQL 2000 archives and restore them on MM8000 systems based on SQL 2005, but not the other way around. It is impossible to restore an SQL 2005 archive onto an SQL 2000 system.

SiPass– **Reader name, FLN name and structure**

This information cannot be acquired from SiPass; this prevents MM8000 from representing the entire physical structure of the devices.

– **Object states and events**

The following information is not transmitted to MM8000:

- Door Open (frame contact)
- ACC Tamper, Power Fault, and Battery Operation
- Area and Elevator objects
- Soft Anti-pass back

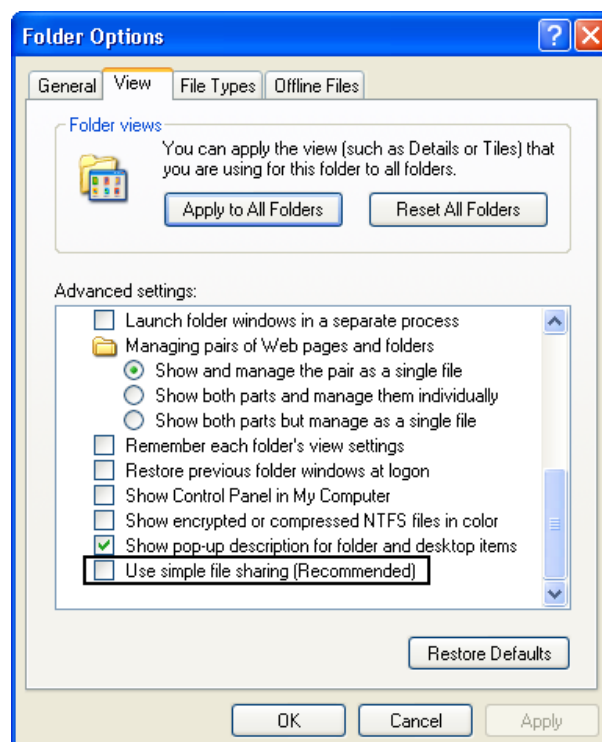
– The use of SiPass **Alarm Classes** with MM8000 is affected by some limitations. Please refer to the SiPass chapter in the DMS8000 Access Control Connectivity Guide (doc.no. A6V10062451_a_en).

– The SiPass **functions which are also available in MM8000** - e.g. event notification (message forwarding in SiPass), reactions and sequences (event tasks in SiPass) - should be clearly assigned to either of the two systems, according to specific requirements, thus preventing any functional overlap.

– In SiPass 2.40 and later, note that the **SiPassUser** password, required for MM8000 communication, must be in uppercase: **SIPASSPASSWORD**.

– In case of communication problems between MM8000 and SiPass, make sure not to check the Windows Explorer folder option: **Use Simple File Sharing** (select **Tools**→**Folder Options** in the Explorer menu and then click the **View** tab as illustrated here below). The option should NOT be enabled on the SiPass server PC.

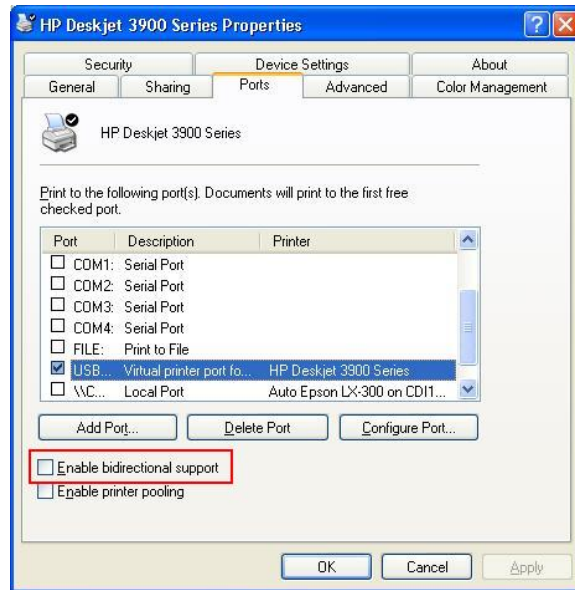
New in MP4.20



USB Printers

If a USB printer reports a fault condition in MM8000, try to remove the Bidirectional Control option in the printer properties page. Please follow this procedure:

1. Open the USB printer properties window (see picture below).
2. Select the "Ports" tab.
3. Uncheck the option "Enable bidirectional support".
4. Cancel all pending jobs in the spooler (most of them will be named "Check"). If you are not able to delete them, reboot the PC and make sure that the spooler list is empty.
5. Retry MM8000 printouts.



SISTORE AX

Note that SISTORE AX can support only one client at the time. When one MM8000 station is connected to the video unit to show video images, no other station can connect at the same time.

Hardware acceleration of the video adapter may influence the correct display of the SISTORE AX live video when used in MM8000. In case of problems, please reduce the acceleration, typically to a medium setting, following this procedure:

- Right click on Desktop.
- Select Properties and then Setting tab.
- Click the Advanced button.
- In the Window that appears, select the Troubleshooting tab.
- Reduce the Hardware Acceleration and click Apply.
- If still not OK, repeat previous step until the live video shows correctly.

When using SISTORE AX video player (RAS V3.6) with a new MM8000/Windows user, you need to start the player as stand-alone application first. This will set the software environment and let the player work properly when is then used in MM8000.

SISTORE MX

In general, we recommend that you use SISTORE MX V2.58 or upgrade to this version. Depending on the version installed, the following difficulties may be encountered:

1. The SISTORE MX 2.55 must be used with the remote player of SISTORE MX 2.57 or later.
2. The archive player shows the control buttons (e.g. Play, Stop, Rewind, etc.) on the very right of the screen and therefore they are not visible most of the time.
Note: The Replay Toolbar (WC1) in SISTORE MX 2.57 player shows up together with the timeline on the left, thus covering the timeline; the actual replay toolbar containing recorded video controls is located on the right and is not visible. In SISTORE Remote Viewer 2.45 and 2.50 you could only see this part of the toolbar (without the timeline).
3. Pre-trigger recording (e.g. automatic recording in case of an event) not possible.
Note: In order to work with MM8000, SISTORE MXPro 2.45 and 2.50 requires the "Enable Software trigger" checkbox to be checked in the configuration. Instead, with SISTORE MX 2.55 and 2.57, the "Long time recording" schedule also has to be enabled to work-around a defect in the communication with MM8000. Unfortunately, this solution prevents the pre-trigger function from working.
4. Stopping the recording is not possible from the MM8000 (video recording is only stopped when the configured delay expires in SISTORE).

SISTORE CX/SX

Faults related to loss of camera signals are not supported by MM8000 with SISTORE CS/SX V3.4.

DESIGO PX

When an event occurs from DESIGO PX where the AckRequired flag is active, if the Ack command is not executed on MM8000 and DESIGO PX returns to normal, the Ack command on MM8000 changes to Reset, and the event stays in the event list.

NK82x5 connected in BACnet mode

If NK8225/NK8235 is connected to MM8000 over a BACnet link, then a communication fault is displayed on the MM8000 even if everything is working properly. As a work-around, we suggest to remove the fault event generation in the "Ethernet" node of the NK82x5 or set the node "out-of-scan". Note that, if a real communication problem occurs, it will be displayed as NK82x5 unit not reachable on the main NK82x5 node.

NK8000 interactions, ACK and Reset commands not supported

**New in MP4.20
(although not new in
MM8000 software)**

In MP4.15, MP4.20, and MP4.20-01, **NK8000 interactions do not support Ack and Reset commands** to any subsystem.

SI410 Intrunet

**New in MP4.20
(although not new in
MM8000 software)**

After commissioning on first connection, MM8000 may show a fault and a non-default event related to SI410. You can clear these events by sending a Silence command.

Journaling

**New in MP4.20
(although not new in
MM8000 software)**

Journaling server does not restart with a printer fault if **print directly to the printer** option is used.
 If you select the option print directly to the printer and the printer is faulty (fault event also reported in MM8000 event list), the journaling server will never restart until the printer will not be reconnected. Problem is present from MP3.20 on.

Slow login

New in MP4.20

Logging on in Windows Vista (and W2008 server) may be slow (about 30 sec) when using MM8000 in closed mode.

6 Documentation


Some documents have been updated to document defect corrections and new features included in MP4.20-01.

STEP documentation repository

On the Siemens intranet, the product documentation can be found in the STEP Documentation Repository. The STEP Web Client interface is available at the following address:

<https://workspace.sbt.siemens.com/content/00001123/default.aspx>

The following describes one way to search and find a document:

1. Click on the "STEP WEB Client" image: 
2. Choose "04 Fire -3F" from the "Product Segment" box and select "Activate filter".
3. Select "All" in the Documents section of the Quick Search page and select "Advanced Search".
4. Enter the document number in the "Brochure No." field (e.g. A6V10062509) and press "Enter".

Note: STEP provides no results when the number of found objects is equal to or greater than 200.

→ To learn about other ways to locate a document, see DMS8000 Quick Reference Guidelines for Search and Finding DMS Documents in STEP (A6V10064704).



Note: MP4.20 documentation is delivered in PDF format only. You can find Word versions of all documentation in the STEP repository.

6.1 DMS8000 Documentation Resource Information & Glossary

Documentation Resource Information and Glossary (document no. A6V10089056_a_en)

This document is a guide to the following:

- Reference Documents: a complete list of all DMS8000 documents and how to access them.
- Roadmap to Documentation: target audiences can see which documents were created for them, and the purpose for each document.
- Customer Support links & resources: contact information for SBT FS Customer Support Centre and other convenient links.
- General Glossary: this contains global definitions of terms and acronyms used in DMS8000 documentation.

6.2 MM8000 Sales documentation

Product Datasheet (document no. A6V10062415_a_en)

A brief summary of the features provided by the MM8000, available architectures, and networks. It also includes information about system limits and subsystems supported.

System Description (document no. A6V10062417_a_en)

This document is similar to the datasheet, but very much expanded, and more detailed. It describes the MM8000 system and the user interface functionality.

Sales Guide (document no. A6V10062427_a_en)

This guide presents the most important sales arguments. Also, a FAQ section provides the answer to some typical questions.

Sales Presentation (document no. A6V10062423_a_en)

This is a PowerPoint presentation provided by the marketing department. It can be modified, or used as is to show potential customers what the MM8000 can do.

DMS8000 Application & Planning (document no. A6V10063710_a_en)

(New in MP4.20-01)

This document contains a brief discussion of product marketing strategy for all FSP-DMS products, and a moderate level of detail about the architectural configurations supported by MM8000.

Tender Specifications (document no. A6V10062419_a_en)

This document is in the standard Siemens format, but it is designed for use and adaptation(s) by independent contractors responsible for selecting and managing the installation and upgrades of a security system for the final customer.

Offer Template (document no. A6V10062429_a_en)

This is intended as an aid for sales people in the preparation of initial and final offers.

6.3 MM8000 Technical documentation

MM8000 Operation Manual (document no. A6V10062409_a_en)

This manual is an operation guide, meant for end users.

MM8000 Installation, Configuration and Commissioning (ICC, document no. A6V10062413_a_en)

The ICC guide provides step-by-step procedures for installation and configuration of the MM8000. During configuration, this manual should be used in tandem with the DMS8000 Connectivity Configuration guides.

The installation checklist at the end of the document is intended to be used as an aid in gathering information from the customer prior to beginning configuration.

DMS8000 Connectivity Configuration Guides:

- **Network, Fire, and Intrusion (documents no. A6V10062425_a_en)**
(New in MP4.20-01)
- **Access Control (document no. A6V10062451_a_en)**
- **Video (document no. A6V10062457_a_en)**
- **OPC (document no. A6V10065253_a_en)**

This set of documents includes: the DMS8000 Network Fire and Intrusion Configuration guide, the DMS8000 Access Control Configuration guide, and the DMS8000 Video Configuration guide. The set is shipped with all FSP-DMS products and contains information about installing Composer, connecting and activating the hardware (dongle) key, setting up a new project, and configuring the networks and subsystems supported by DMS8000 products. This should be used in conjunction with the ICC guide.

DMS8000 Graphical Map Configuration Guide (document no. A6V10062441_a_en)

This manual described in details the MM8000 graphic editor.

Composer Technical Manual document no. A6V10062401_a_en)

This guide explains how to use Composer in general. It provides a reference to commands and instructions used during the system configuration.

MM8000 Localisation Guidelines (document no. A6V10062459_a_en)

This guide provides assistance with the localisation of the MM8000 software, including information about using the Catalyst tool.

Quick reference guides

These short guides (4 to 8 pages A5 format) can be used as reference papers for the most typical software functions. The list of available quick guides includes:

- Operation (document no. A6V10067779_a_en)
- Installation, Configuration Commissioning (doc.no.008598_d_en)
- Graphical maps (document no. 008906_b_en)
- Composer Configuration (document no. A6V10067783_a_en)

Release Notes (document no. A6V10062509_a_en)

This document. It includes all information concerning MP4.20-01.

7 Customer support links & resources

7.1 Siemens BT FS

Our Customer Support Center intranet site at:

https://intranet10.sbt.siemens.com/about_bt/Business_Units/fs/Customer+Support+Center/?languagecode=en

provides useful information and links. In the Online Support section of this intranet page, software downloads and known product issues can be found in the PSP (password-protected Product Support Platform).

→ The support mailbox is: fs.support.sbt@siemens.com.

7.2 Microsoft

General support about Microsoft Windows can be found at:

→ <http://support.microsoft.com/directory/>

7.3 Adobe Acrobat

To view the PDF document is necessary to install the program Adobe Acrobat Reader. You can find its free version at:

→ <http://www.adobe.com/products/acrobat/readstep.html>

Siemens Switzerland Ltd
Building Technologies Group
International Headquarters
Fire Safety & Security Products
Gubelstrasse 22
CH-6301 Zug
Tel +41 41 724 24 24
Fax +41 41 724 35 22
www.sbt.siemens.com