

SIEMENS



MT8001 Management Terminal

History Viewer

Installation and operation

Building Technologies

Fire Safety & Security Products

Data and design subject to change without notice. / Supply subject to availability.

© 2009 Copyright by
Siemens Switzerland Ltd

We reserve all rights in this document and in the subject thereof. By acceptance of the document the recipient acknowledges these rights and undertakes not to publish the document nor the subject thereof in full or in part, nor to make them available to any third party without our prior express written authorization, nor to use it for any purpose other than for which it was delivered to him.

About this document.....	4
1 Safety regulations	6
1.1 Country-specific standards	6
1.2 Assembly, installation, commissioning and testing work	6
1.3 Modifications to the system design and the products	6
2 Introduction	7
3 Installation	8
3.1 Installation requirements	8
3.2 Installation procedure.....	8
4 Transferring history files to your PC	10
5 Getting started.....	11
5.1 Data analysis – overview	11
5.2 Application overview	11
6 History Data Analysis	12
6.1 Updating user data.....	12
6.1.1 Adding a new user	13
6.1.2 Modifying existing user data	14
6.2 Importing event data	15
6.3 Selecting event criteria to generate a report.....	16
6.4 Viewing event data.....	18
6.4.1 Viewing single event data.....	19
6.4.2 Viewing multiple event data.....	20
6.5 Deleting event data	21
7 Key to codes in the archive	22

About this document

Purpose of this document

This manual is a guide to using the History Viewer application that is included with the MT8001 Management Terminal. It discusses the transfer of history log data from the MT8001 Management Terminal to a PC, and the use of the tool for data analysis and management.

Scope

This document applies to the MT8001 Management Terminal, MP4.20.

Target audience


- Commissioning personnel
- End-users

Documentation resource information

The *DMS8000 Documentation Resource Information and Glossary Guide* assembles important information regarding documentation resources. This document contains the following:

- Comprehensive definitions of the target audiences for Siemens FS DMS documents
- Training program information including the Siemens intranet link
- A complete list of all available DMS8000 documents
- Instructions for how to obtain a document via the Siemens intranet using the STEP Documentation Repository System
- A map of relevant documents for each target audience group
- Customer Support links & resources
- A glossary containing definitions of all terms and acronyms used in DMS8000 documentation

To access the *DMS8000 MP4.20 Documentation Resource Information and Glossary Guide* (STEP #A6V10089056), go to the link and follow the instructions below:
<https://workspace.sbt.siemens.com/content/00001123/default.aspx>

1. Click on the **STEP Web Client** image: 
2. Choose **04 Fire -3F** from the Product Segment box and select **Activate filter**.
3. Select **All** in the Documents section of the Quick Search page and then select **Advanced Search**.
4. Enter the document number in the Brochure No. field (**A6V10089056**) and then press **Enter**.

Operational and safety regulations



Before groups of persons begin work on the system they must have read and understood the related documents, in particular Chapter 1 "Safety regulations".

Liability disclaimer for damage or injuries

Before products are delivered, they are tested to ensure they function correctly when used properly. Siemens disclaims all liability for damage or injuries caused by the incorrect application of the instructions, or the disregard of danger advisories. This disclaimer applies in particular to personal injuries or damage caused by:

- Improper and/or incorrect use

- Disregard of safety instructions in the documentation or on the product
- Poor maintenance or a lack of maintenance

We have taken every possible care in preparing this manual. The contents of this manual are revised regularly and brought up to latest standards. Nevertheless, we are unable to provide any guarantee with regard to content, entirety or quality of the details contained in this manual.

We assume no liability for problems resulting from the use of this manual. The information contained in this document may be changed without prior notice. We reserve the right to publicize any such changes by issuing updated versions or new editions.

Modification index

Version	Date	Comments
A6V10096161_a_en	06.2009	Corresponds to MP4.20
A6V10096161_a_en	06.2008	Corresponds to MP4.15 Filename change: "MT8001 History Viewer Manual" Document number change from EDMS to STEP repository
006962_b_en	09.2005	Corresponds to MP3.15
006962_a_en	03.2004	No changes
006962_a_en	10.2003	No changes
006962_a_en	01.2003	First version – Filename: "MT8001 Event History Analysis"

Acknowledgments

We wish to thank all the Siemens colleagues and the customers who have given us feedback and comments about this documentation.

1 Safety regulations

This chapter describes the danger levels and the relevant safety regulations applicable for the use of FS-DMS products. Please read the following subsections, as well as the previous section "About this document" thoroughly before beginning any work.

1.1 Country-specific standards

Siemens products are developed and produced in compliance with the relevant international and European safety standards. Should additional country-specific, and/or local safety standards or regulations concerning project planning, installation, and/or operation of the product(s) apply, then these standards and/or regulations must also be taken into account, in addition to the safety regulations mentioned in the product documentation.

1.2 Assembly, installation, commissioning and testing work

- Activate security-, fire- and third party systems or devices only in the presence of the person responsible.
- Abide by the safety regulations of the connected sub-systems when working on management stations. This especially applies when switching-off system components.
- Inform people before the testing of alarm devices - consider the possibility of panic Reactions.
- Inform the alarm and fault receiving stations connected to the system before carrying out tests.

1.3 Modifications to the system design and the products



Modifications to a system or to individual products may cause faults or malfunctioning.

Please request written approval from Siemens Building Products, FS-DMS, and any relevant authorities concerning intended system modifications and system extensions.

2 Introduction

One of the important features of the MT8001 management terminal is its history log, which can be accessed via the history browser directly from the terminal (as discussed in the MT8001 Operation Manual that came with your terminal).

The History Viewer tool provides an alternative to reviewing event log data directly from the MT8001 terminal. This tool enables you to transfer the MT8001 history log data from the MT8001 terminal to a PC, and to analyze and manage data from there.

This document explains how to transfer data from the MT8001 event history log to your PC, and how install and use the History Viewer tool.

3 Installation

3.1 Installation requirements

For the History Viewer application, you will need:

- PC with a Pentium processor, at least 128 MB RAM
- Windows XP Pro / 2003 / 2000 operating system

For data transfer from MT8001 to your PC, you will need:

- Microsoft ActiveSync
- ActiveSync cable
- Keyboard adapter (this is supplied in the MT8001 service kit, or can be built as specified in the *MT8001 Installation, Configuration & Commissioning Guide*, STEP #A6V10096181)

3.2 Installation procedure

The History Viewer can be easily installed by double-clicking the setup.exe file on the CD that was shipped with the MT8001, and following the instructions displayed during the setup procedure.

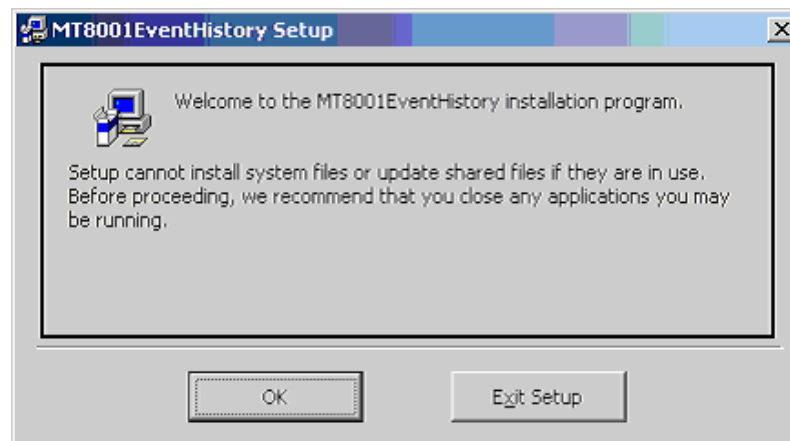


Fig. 1 Event History setup window

1. Verify that all other applications are closed and click OK.

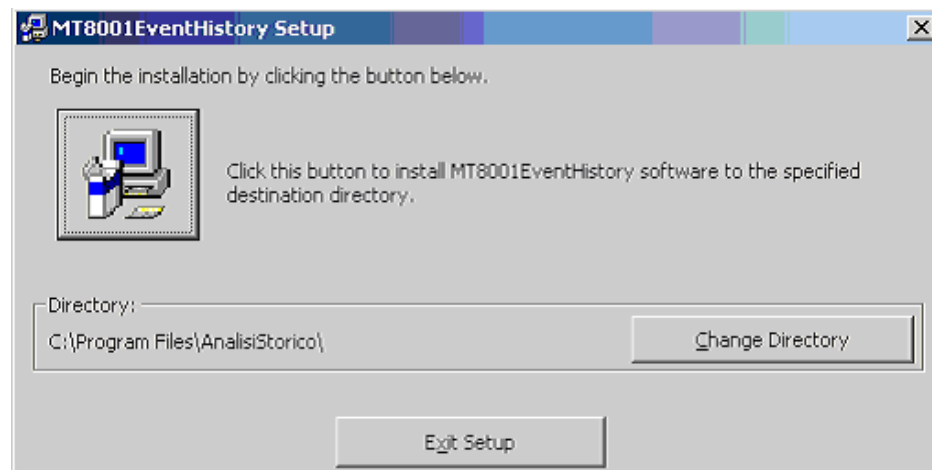



Fig. 2 Installation directory selection window

To change the directory in which the program will be installed, select the change directory button and choose the new location.

When ready, click the install icon in the left of the window. 

The application is installed on your PC.

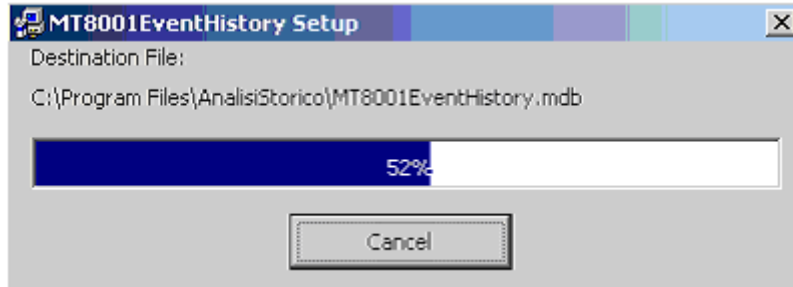


Fig. 3 Installation progress window

2. When the completed successfully message displays, select OK.

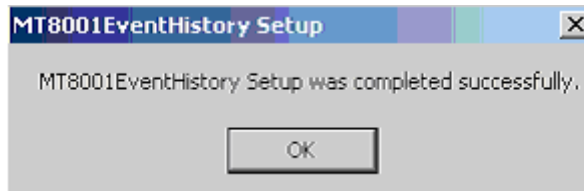


Fig. 4 Installation complete

4 Transferring history files to your PC

The transfer of the history files from the MT8001 to the PC should be performed by qualified personnel such as a computer technician or specialist.

The History Viewer tool pulls its data from the following folder on the PC:

- 'Program files \ AnalisiStorico \ History_ArchiviPROTeREP'.

Note: 'Program files' is the default directory. You can choose a different destination directory when installing the application.

Before you can use the History Viewer tool, the data must have been moved to this folder. Please note that this folder is created *automatically* the first time the History Viewer application is opened.

If you regularly archive data in the MT8001, you may choose to transfer data from the MT8001 to a dedicated data archive folder on the PC. Then proceed to copy the archive to be reviewed into the archive folder.

Otherwise, if data is being transferred from the MT8001 for immediate analysis only and doesn't need to be archived, it is faster to transfer it directly to the folder described in the following procedure.

To transfer the history files stored on the MT8001 terminal to the PC:

1. Following the ActiveSync / keyboard data transfer procedure, copy the directories 'Archive' and 'Current' from: My Computer\Flash-Disk1\MT8001\History (on the MT8001).

→ See *MT8001 ICC Guide*, section 5.6.2, STEP #A6V10096181.

2. Paste them into the destination folder on the PC.

(Either the archive folder or: 'Program files \ AnalisiStorico \ Installation directory\ History_ArchiviPROTeREP').

5 Getting started

5.1 Data analysis – overview

This is an overview of the data analysis process. Each step is detailed in its own section following this summary.

1. Open the History Viewer application see below
2. Update user data (optional) p. 12
3. Import event data p.15
4. Select event criteriap. 16
5. View resulting data p.18
6. Delete data (optional) p.21
7. Exit the application p.21

5.2 Application overview

Launch the History Viewer application

- Select Start menu→ Programs→ MT8001EventHistory

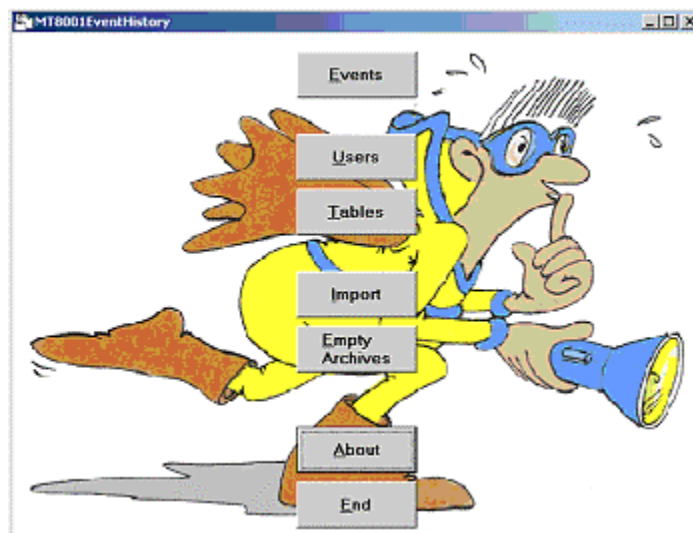


Fig. 5 Main menu window

- | | | |
|---|----------------|---|
| 1 | Events | Opens the query and report area. (all data analysis is done here) |
| 2 | Users | Enables you to update user information |
| 3 | Tables | Displays a key to the number codes used (this is generally only used for troubleshooting) |
| 4 | Import | Loads event history data into the application |
| 5 | Empty Archives | Deletes the data that you loaded during import |
| 6 | About | Displays the version of the application |
| 7 | End | Closes the History Viewer application |

6 History Data Analysis

6.1 Updating user data

Each user in the MT8001 has a numerical id used for logging in which corresponds with a textual description (for example, 111 – John Smith, or 3 – Technician).

Data analysis is significantly easier when you see the name of the user rather than just their number. However, while user numbers are stored in the MT8001 Management Terminal, the user names are not. Therefore, before importing event data for analysis, you should verify that the MT8001 user list is up to date in the History Viewer application. If the user data isn't up to date, the event data will may not display the correct user name, or may not have a name associated with the number at all.

If data list shows '**...to be defined...**' in the user column, this is a sign that the user list is out of date. You will need to update the user list and re-import the data. Please note that this is not the only symptom of an out-of-date list. For example, if last month John Smith had the user ID 123 but has left the company and the new employee Robert Brown has been given 123 as his user ID, until this is updated, all of Robert Brown's actions will be shown as having been performed by John Smith.



The first time you use the application, you will have to create the user list by hand. After that you can update it periodically.

Opening the user update window

- From the main window, select the 'Users' button, (see Fig. 5 on p. 11).
The Users window displays with the list of existing users.

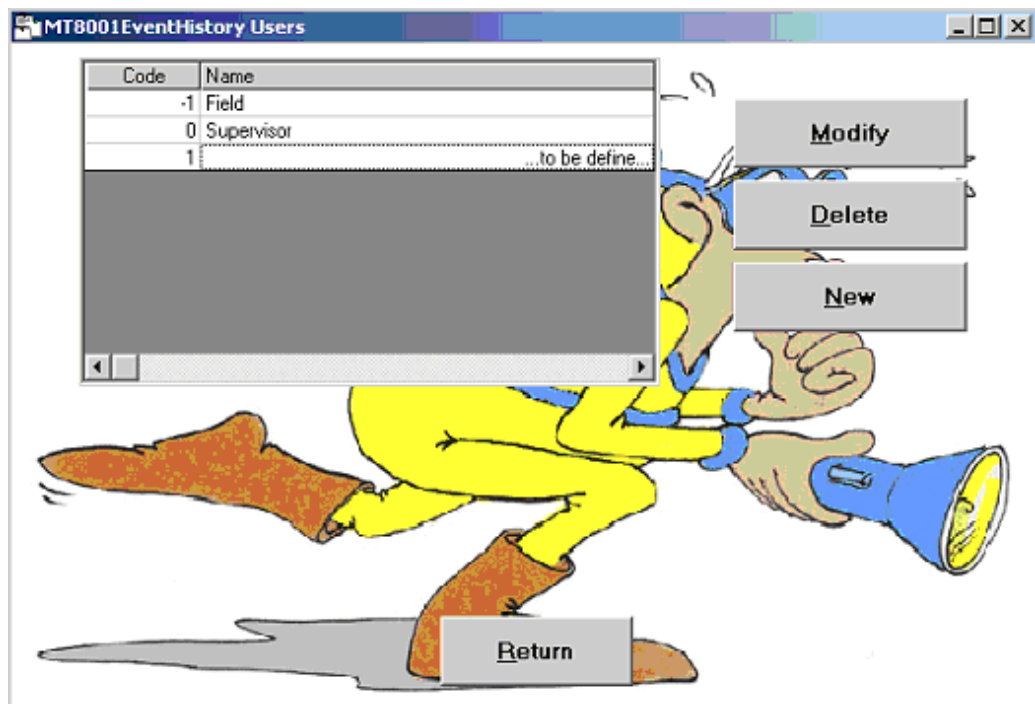


Fig. 6 Users list

6.1.1 Adding a new user

1. From the user update window, select 'New'.
The fields for entering user data display at the bottom of the window.
2. Enter the name of the user in the 'Name' field.
3. Enter the User ID in the 'Code' field.
4. Select OK.
- The new entry is added to the list of users.*
5. To go back to the main menu, please press the 'Return' button.



By default the following user is already defined: -1 Field. This cannot be deleted but can be modified or ignored.

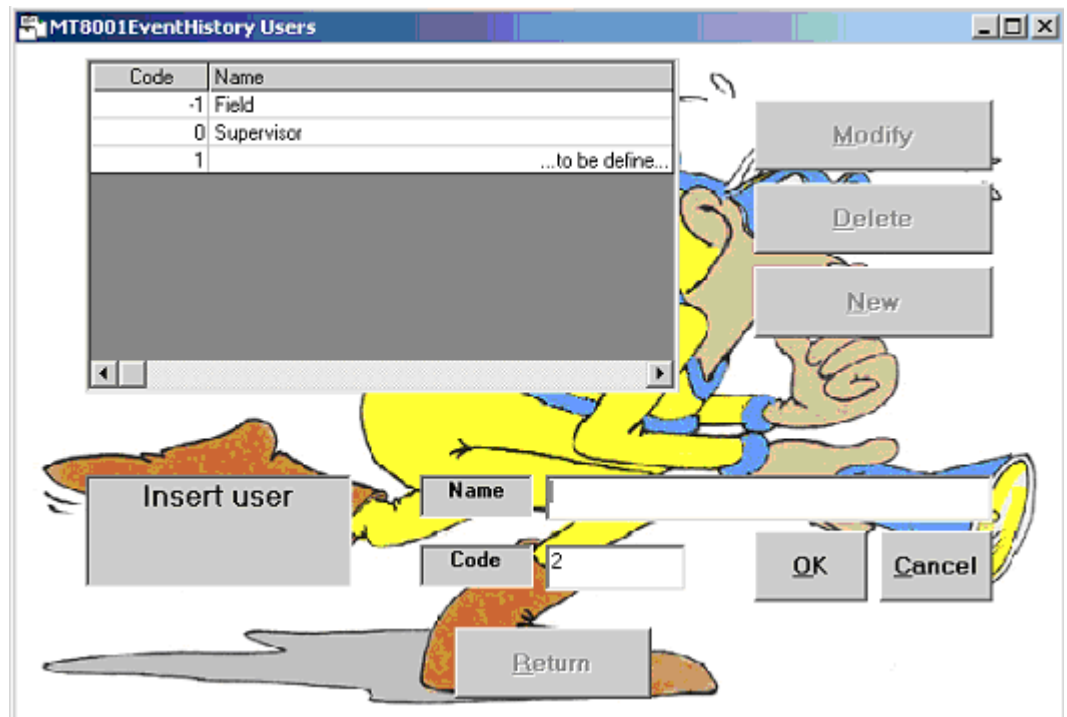


Fig. 7 Insert new user window

6.1.2 Modifying existing user data

1. From the list of users in the user update window, select the name of the user to be modified.
The fields for modifying user data display at the bottom of the window.
2. Select the Modify button.
3. Modify the name of the user in the Name field or modify the User ID in the Code field.
4. Select OK.
5. To go back to the main menu, press the 'Return' button.

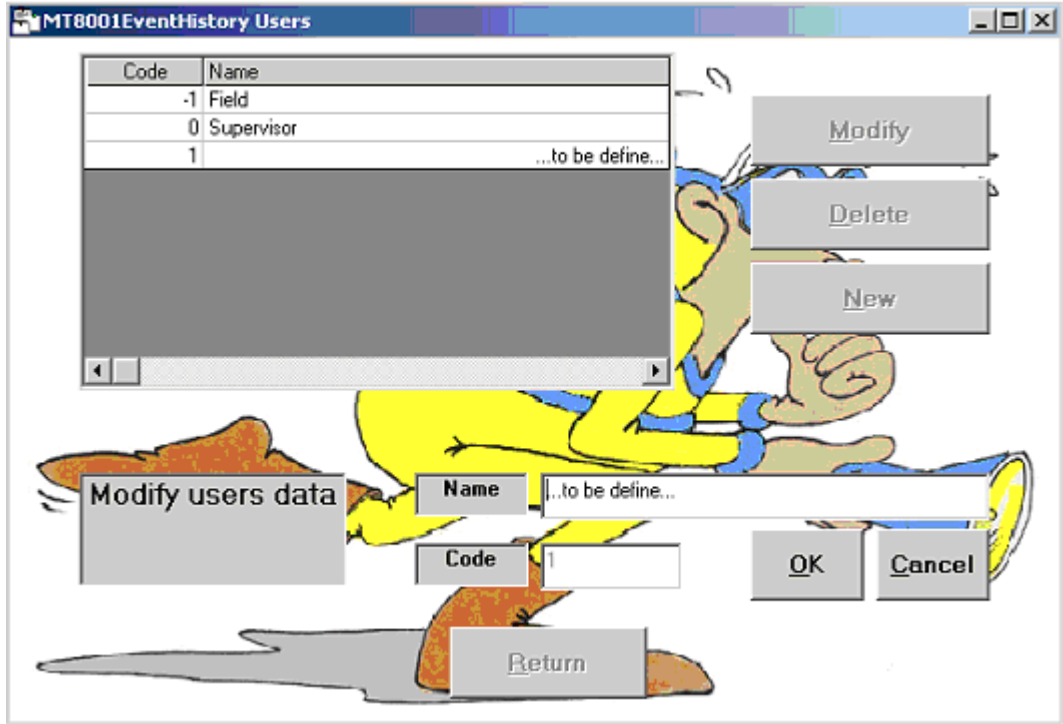


Fig. 8 Modify existing user window

6.2 Importing event data

Before proceeding to data analysis, you must first load the data into the History Viewer application. By default, data is always taken from the following folder:

- ‘Program files \ AnalisiStorico \ History_ArchiviPROTeREP’.

Note: If you selected another destination folder when installing the application, look there instead of in ‘Program files’.

Verify if old data remains in the archives

Note that if the last user did not empty the archives prior to exiting the application, that data will still be present in the History Viewer database. When you import new data it will be combined with the list of data that is currently loaded in the application. If you do not want to see the data from the last session, follow the procedure for deleting data from the application detailed in section 6.5 Deleting event data, on p. 21 prior to importing new data.

To verify whether old data has been left in the system, look in the following file:

- ‘Program files \ AnalisiStorico \ History_ArchiviPROTeREP_IMPORTATI’.

Note: If you selected another destination folder when installing the application, look there instead of in ‘Program files’.

This folder should contain two empty folders: ‘Archive’ and ‘Current’. If there are any additional files in any of these folders, the last data archive was not deleted by the last user.



At the end of the import procedure described in the next section, data contained in the directory ‘History_ArchiviPROTeREP’ is automatically transferred to: ‘History_ArchiviPROTeREP_IMPORTATI’.

Import data

- From the main window, select the ‘Import’ button.

At the end of the import procedure the following window will be displayed:

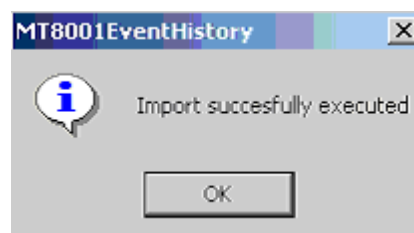


Fig. 9 Data loaded successfully message



If you receive a message similar to the following:
‘User 3 not defined’, your user list is not up to date.

→ See “Adding a new user” p. 13 and/or “Modifying existing user data” p. 14.

6.3 Selecting event criteria to generate a report

Before reviewing event data you need to decide which types of data you are interested in. Once you have defined that, you can generate a report and review the data in that report.

The first step is selecting the event criteria. For example, if you want to see only those events handled by John Smith, you would select his name from the user list. If you want to see all events that occurred between 2:00 and 18:00 on June 10, you would set that range in the time area. You can also set multiple criteria such as all events that occurred yesterday, were handled by John Smith, and related to the discipline of fire. Here you would set the user, time and discipline filters.

- To get to the query window, select the 'Events' button from the main window.

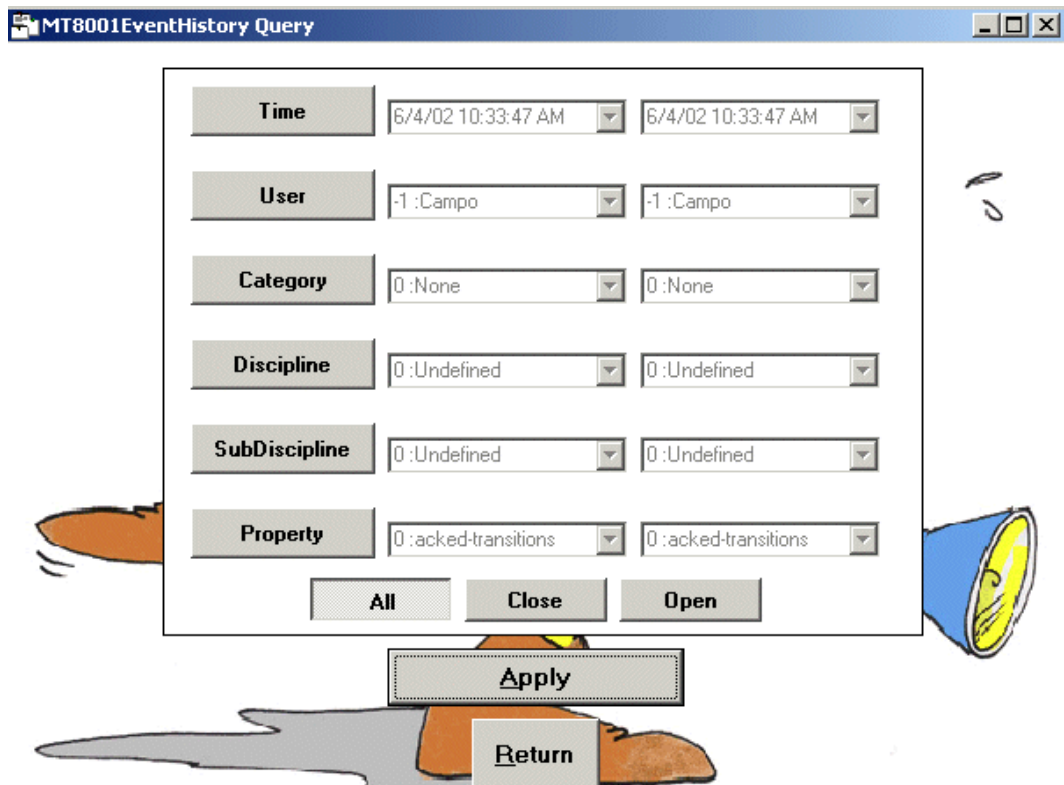


Fig. 10 Event history query window

Generating a report – overview

1. From the Query window select the data that you would like to appear in each category:

- Select a single criterion in the category (example, User 1 – John Smith)
OR
- Select a range of criteria (example, June 10, 12:00 to June 10, 18:00)
OR
- Select all criteria (do not select the button at all)

2. Click 'Apply'.

The report window displays.

To select a single criterion

As an example, to view only Severe Alarms, you would do the following:

1. Select the 'Category' button.

The fields change from grey (inactive) to black (active).

2. Set both fields to the criterion you want to display (in this example, 'Severe Alarm').

To select a range of criteria

To see only those events that occurred within a limited period of time, you would select a range for 'time'.

1. Select the button that you want to filter for (for example, 'User').

The fields change from grey (inactive) to black (active).

2. Set the left field to the start of the range, set the right field to the end of the range (for example, June 10, 2:00 and June 10, 18:00).

To select all types of events

As an example, to see all event disciplines, you would do the following:

1. Select the 'Discipline' button.

2. Do not select any buttons or modify any fields (they should be greyed out) and click 'Apply'.

To view all events

If you want to see every event in the database, you do not need to change anything or set any filters. When you open the Query window, all events are already selected by default. Just select 'Apply'.



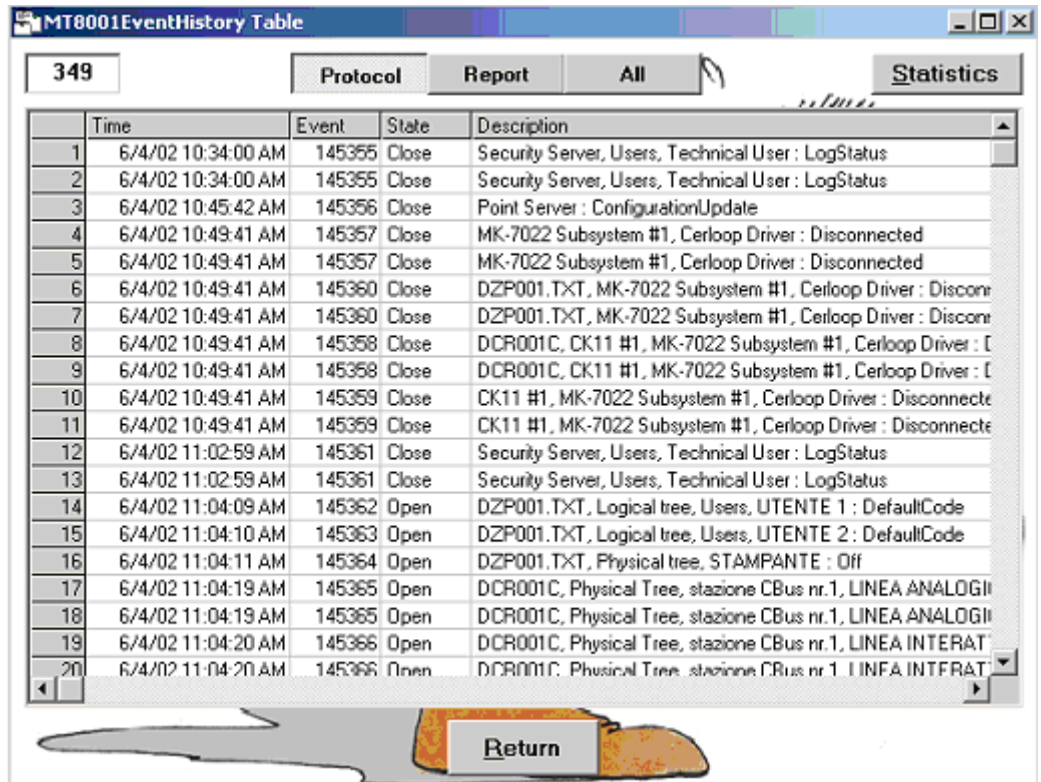
The Open and Close buttons at the bottom of the window are not used. The All button should be automatically selected by default. There is no need to change anything here.

6.4 Viewing event data

The Table window shows a report (or query result) of the events that fall into the category(s) you selected in the event history query window. The total number of events in this report is shown in the upper left corner of the window.

From the Table window you can:

- Review the details about a single event.
 - See section 6.4.1 Viewing single event data, p. 19
- Review statistical data for multiple events.
 - See section 6.4.2 Viewing multiple event data, p. 20



The screenshot shows a window titled "MT8001EventHistory Table" with a total count of 349 events. The window has tabs for "Protocol", "Report", and "All", and a "Statistics" button. The main area is a table with the following data:

	Time	Event	State	Description
1	6/4/02 10:34:00 AM	145355	Close	Security Server, Users, Technical User : LogStatus
2	6/4/02 10:34:00 AM	145355	Close	Security Server, Users, Technical User : LogStatus
3	6/4/02 10:45:42 AM	145356	Close	Point Server : ConfigurationUpdate
4	6/4/02 10:49:41 AM	145357	Close	MK-7022 Subsystem #1, Cerloop Driver : Disconnected
5	6/4/02 10:49:41 AM	145357	Close	MK-7022 Subsystem #1, Cerloop Driver : Disconnected
6	6/4/02 10:49:41 AM	145360	Close	DZP001.TXT, MK-7022 Subsystem #1, Cerloop Driver : Disconn
7	6/4/02 10:49:41 AM	145360	Close	DZP001.TXT, MK-7022 Subsystem #1, Cerloop Driver : Disconn
8	6/4/02 10:49:41 AM	145358	Close	DCR001C, CK11 #1, MK-7022 Subsystem #1, Cerloop Driver : [
9	6/4/02 10:49:41 AM	145358	Close	DCR001C, CK11 #1, MK-7022 Subsystem #1, Cerloop Driver : [
10	6/4/02 10:49:41 AM	145359	Close	CK11 #1, MK-7022 Subsystem #1, Cerloop Driver : Disconnect
11	6/4/02 10:49:41 AM	145359	Close	CK11 #1, MK-7022 Subsystem #1, Cerloop Driver : Disconnect
12	6/4/02 11:02:59 AM	145361	Close	Security Server, Users, Technical User : LogStatus
13	6/4/02 11:02:59 AM	145361	Close	Security Server, Users, Technical User : LogStatus
14	6/4/02 11:04:09 AM	145362	Open	DZP001.TXT, Logical tree, Users, UTENTE 1 : DefaultCode
15	6/4/02 11:04:10 AM	145363	Open	DZP001.TXT, Logical tree, Users, UTENTE 2 : DefaultCode
16	6/4/02 11:04:11 AM	145364	Open	DZP001.TXT, Physical tree, STAMPANTE : Off
17	6/4/02 11:04:19 AM	145365	Open	DCR001C, Physical Tree, stazione CBus nr.1, LINEA ANALOGI
18	6/4/02 11:04:19 AM	145365	Open	DCR001C, Physical Tree, stazione CBus nr.1, LINEA ANALOGI
19	6/4/02 11:04:20 AM	145366	Open	DCR001C, Physical Tree, stazione CBus nr.1, LINEA INTERAT
20	6/4/02 11:04:20 AM	145366	Open	DCR001C, Physical Tree, stazione CBus nr.1, LINEA INTERAT

A "Return" button is located at the bottom center of the window.

Fig. 11 Event data report window (query result)

6.4.1 Viewing single event data

You can view the protocol or the report associated with an individual event, or you can view both at the same time.

1. From the top of the window, select the 'Protocol', 'Report' or 'All' button ('All' shows both protocol and report together).
2. From the list, scroll to find the event you are interested in. When you select it, the protocol, report or both will display.
3. To view another event, simply select it and the details shown will change.
4. To change between 'Protocol', 'Report', and 'All', click directly on the button and then reselect the event you would like to review.

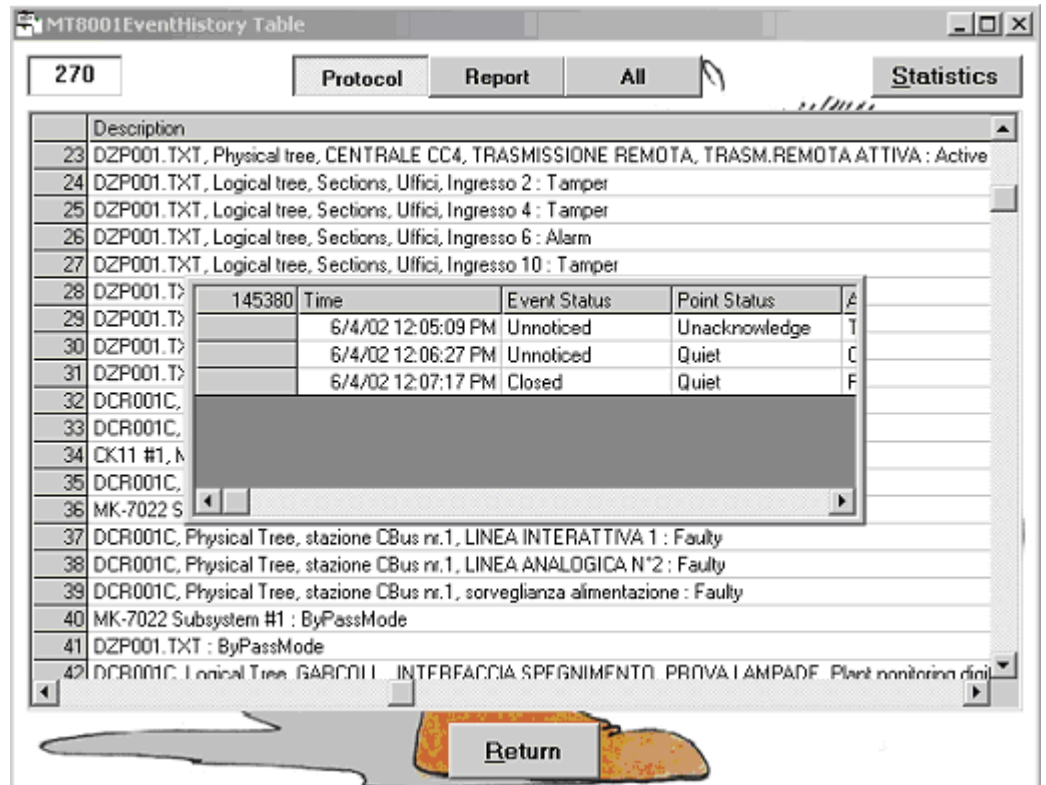


Fig. 12 Event protocol pop-up window

6.4.2 Viewing multiple event data

The total number of events in your report is shown in the upper left of the Table (report) window.

You can view the number of events per category grouped by time, category, discipline, sub-discipline, and property (cause of alarm) contained in your current report.

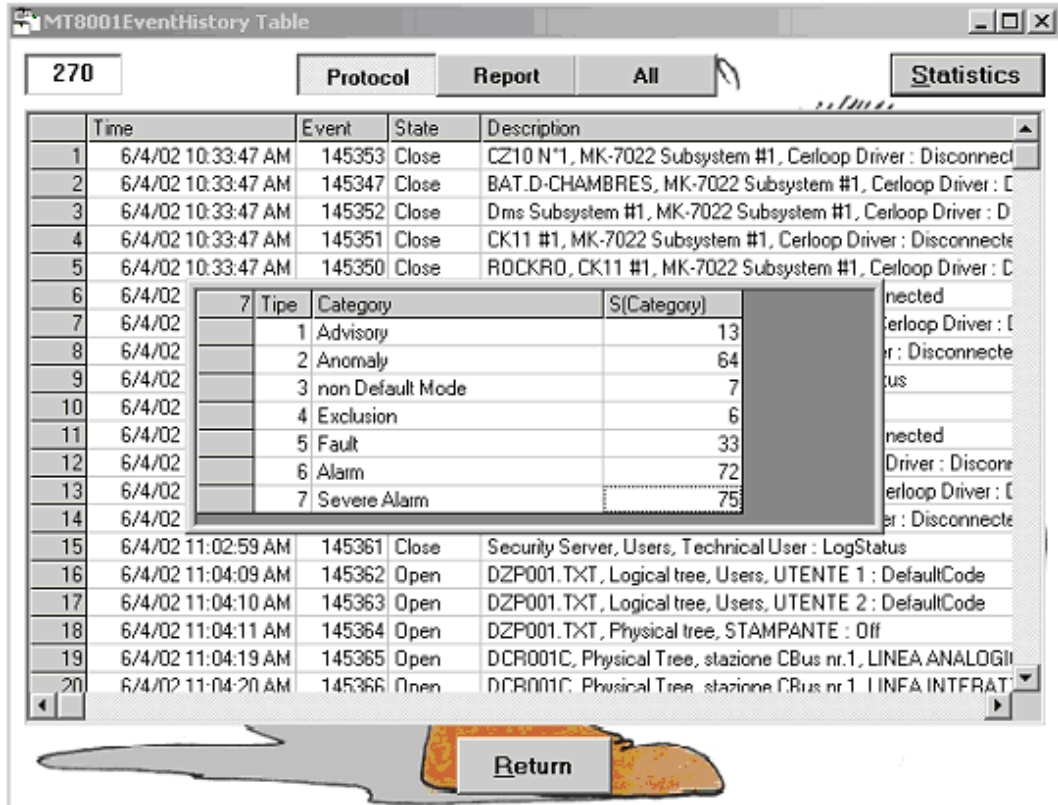


Fig. 13 Statistics window (displaying number of events that occurred, by category)

To view statistics:

1. Generate a report that includes the criterion you would like to be included in the count.
2. From the Table (report) page, select the 'Statistics' button.
3. In the 'Group by' window, select the type of data you would like to have counted, then select OK.

The list of data displays.

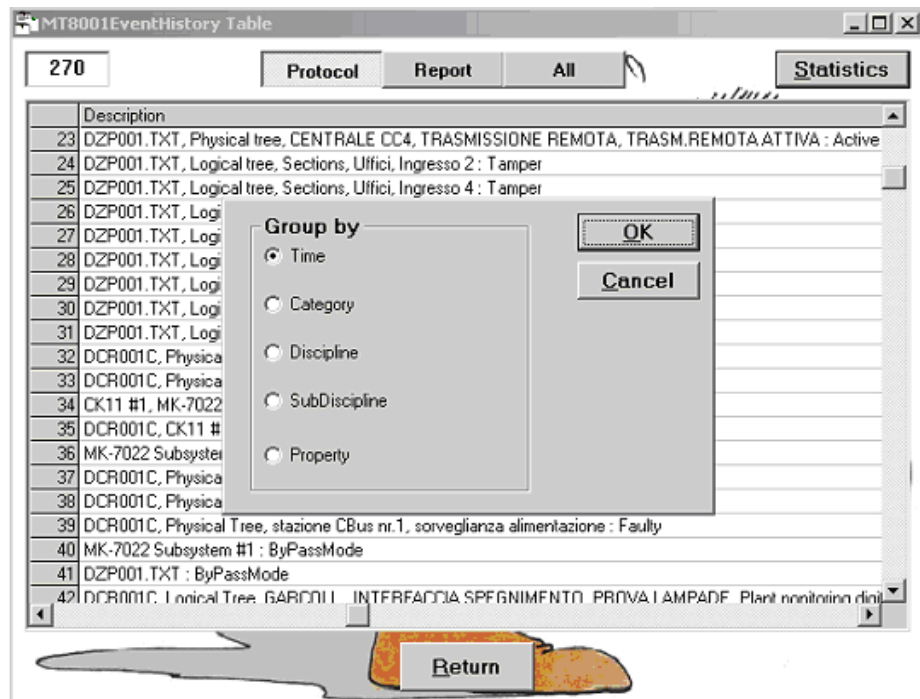


Fig. 14 'Group by' selection window

Example procedure – Checking the number of events caused by tampers

To see how many alarms were triggered by tampers in January:

1. From the Query window, set the filter to 12:00 January 1 to 23:59 January 31. Leave all other buttons unselected (so that all events that occurred in January will be included).
2. Click 'Apply' to generate the report.
3. From the Table (report) page, select the 'Statistics' button.
4. From the 'Group by' window, select 'Property'.
5. Click OK.

The list of event triggers is displayed.

6. Scroll down to see the Tamper field and check the number to the right.

6.5 Deleting event data

Deleting the data contained in the archive is optional. However, keep in mind that new data that is imported will be integrated into the list of data that is currently loaded. If you prefer that this doesn't happen, you should delete the data when you have finished using the History Viewer.

1. To delete all the data contained in the database, select the 'Empty Archives' button from the main window.
2. Select 'Yes' in the confirmation window.

The data is deleted.

7 Key to codes in the archive

This is not a commonly used feature but can be important if you encounter a problem with the data. If a number displays without a textual description, you can find the corresponding text here.

Also, this contains a complete list of all possible event criteria (except for users, which is maintained separately and discussed in section 6.1.)

To view the key

1. Select the 'Tables' button from the main window.

The Tables window displays.

2. Click on the tab (Event Status, Point Status, Action, Category, Discipline, Sub-Discipline, or Property) to view the codes associated with that group.

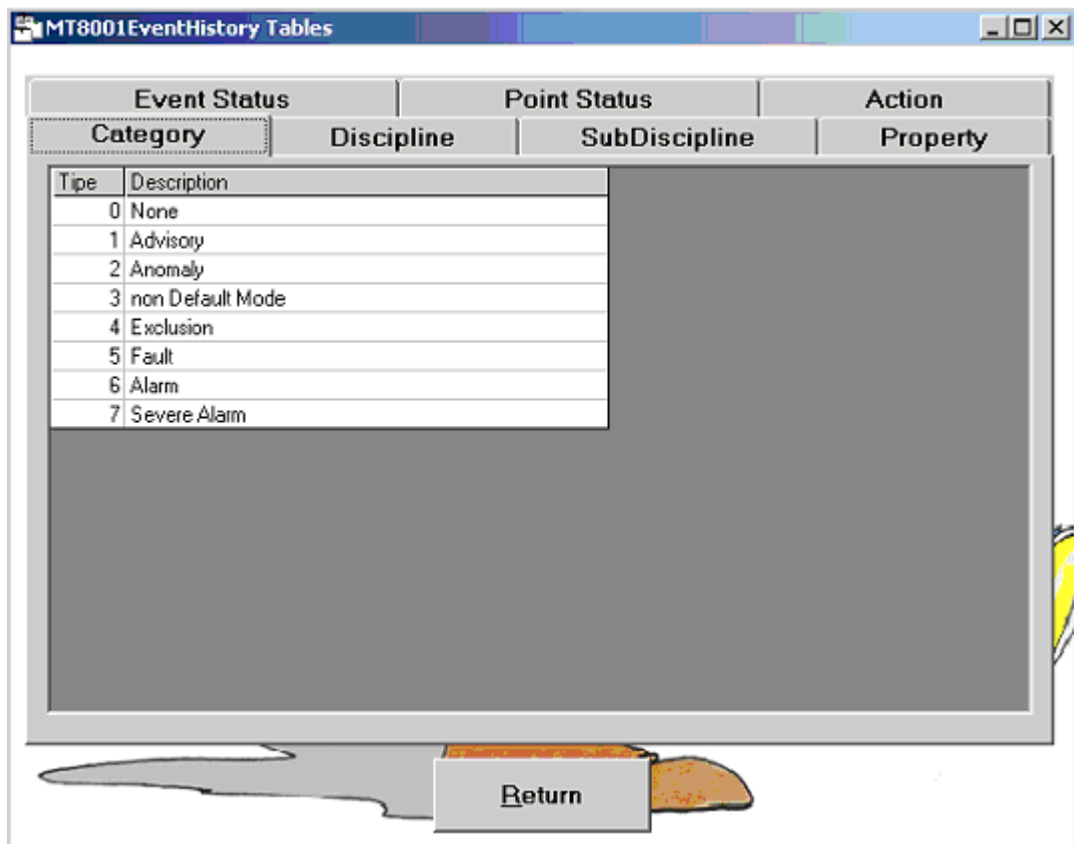


Fig. 15 Key to codes associated with event data

Siemens Switzerland Ltd
Building Technologies Group
International Headquarters
Fire Safety & Security Products
Gubelstrasse 22
CH-6301 Zug
Tel +41 41 724 24 24
Fax +41 41 724 35 22
www.sbt.siemens.com