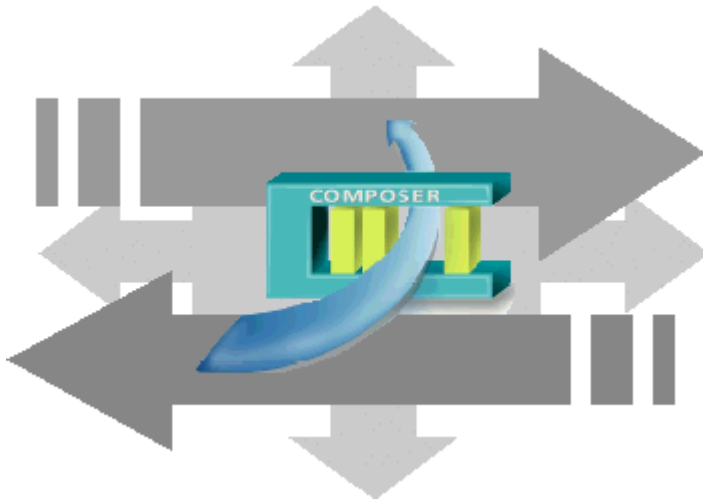


SIEMENS



MM8000 MP4.xx

DLCS access control

Add-on module

Installation, Configuration,
and Operations guide

Building Technologies

Fire Safety & Security Product

Data and design subject to change without notice. / Supply subject to availability.

© 2010 Copyright by
Siemens Building Technologies AG

We reserve all rights in this document and in the subject thereof. By acceptance of the document the recipient acknowledges these rights and undertakes not to publish the document nor the subject thereof in full or in part, nor to make them available to any third party without our prior express written authorization, nor to use it for any purpose other than for which it was delivered to him.

About this document.....	2
1 Introduction	4
2 Installation	4
2.1 Software installation.....	4
2.1.1 Software License.....	4
2.1.2 DLCS add-on installation	4
2.1.3 DLCS add-on uninstall	5
3 Configuring DLCS	6
3.1 Configuration checklist	6
3.2 Configuration procedure	6

About this document

Purpose of this document

This manual is a guide to the configuration procedures for the integration of DLCS systems in MM8000 management stations.

This guide is part of the general DMS8000 documentation set which includes the Composer Technical Manual, the other DMS8000 Connectivity Guides (Network/Fire/Intrusion, Access Control, and OPC), and the Installation, Configuration, and Commissioning manual (ICC) for each specific product.

Scope

This document applies to the MM8000 Management Station MP4.15 and higher.

Target audience

This documentation is intended for the following users:

- Project Managers
- Project Engineers
- Commissioning Personnel

Individuals performing the operations described in this manual are expected to have prior expertise and training in the field of security, at least a moderate level of familiarity with the Siemens Building Technologies product line, and experience with the installation, configuration, and commissioning of security management systems.


Documentation resource information

The **DMS8000 Documentation Resource Information Guide** document assembles in one place important information regarding documentation resources. It contains the following:

- Comprehensive definitions of the target audiences for FS DMS documents
- Training program information including the Siemens intranet link
- A complete list of all available DMS8000 documents
- Instructions for how to obtain a document via the Siemens intranet using the STEP Documentation Repository System
- A map of relevant documents for each target audience group
- Customer Support links & resources
- A glossary containing definitions of all terms and acronyms used in DMS8000 documentation

To access the **DMS8000 Documentation Resource Information Guide** (STEP #A6V10089056), go to the link and follow the instructions below:

<https://workspace.sbt.siemens.com/content/00001123/default.aspx>

1. Click on the **STEP WEB Client** image: 
2. Choose **04 Fire -3F** from the **Product Segment** box and select **Activate filter**.
3. Select **All** in the **Documents** section of the **Quick Search** page and then select **Advanced Search**.
4. Enter the document number in the **Brochure No.** field (e.g. A6V10089056) and press **Enter**.

Operational and safety regulations



Before beginning work on the DMS8000 systems, you must have read and understood the related documents, in particular the Safety Regulations included in the Installation, Configuration, and Commissioning manual (ICC) for each specific product.

Liability disclaimer for damage or injuries

Before products are delivered, they are tested to ensure they function correctly when used properly. Siemens disclaims all liability for damage or injuries caused by the incorrect application of the instructions, or the disregard of danger advisories. This disclaimer applies in particular to personal injuries or damage caused by:

- Improper and/or incorrect use.
- Disregard of safety instructions in the documentation or on the product.
- Poor maintenance or a lack of maintenance.

We have checked the contents of this manual for agreement with the hardware and software described. Since deviations cannot be precluded entirely, we cannot guarantee full agreement. However, the data in this manual are reviewed regularly and any necessary corrections included in subsequent editions. Suggestions for improvement are welcome.

Modification index

Version	Date	Notes
A6V10067792_a_en	06.2009	Corresponds with DMS8000 MP4.20
A6V10067792_a_en	06.2008	Corresponds with DMS8000 MP4.15
A6V10067792_a_en	06.2007	Corresponds with DMS8000 MP4.10
009424_b_en	06.2006	Corresponds with DMS8000 MP3.20

1 Introduction

This is a guide to the software configuration procedures for the integration of DLCS Access Control system in the MM8000 Management Station and MK8000 OPC server.

For a complete guide to the configuration process, this manual should be used with the DMS8000 Network, Fire and Intrusion Guide, and with the Installation, Configuration and Commissioning manual (ICC) of the specific product.

DLCS

The DLCS (Door Light Control System) can monitor and control the state of the connected doors. The MM8000 can receive the door states/alarms and issue control commands (unlock door) by means of a networked OPC server (Siemens WinCC V6.0 SP2).

2 Installation

The DLCS package is provided in the MM8000 product CD as add-on. It can be installed using the standard Add-on Manager.

2.1 Software installation

2.1.1 Software License

MM8000 license must include specific items for the DLCS Add-on, for the NS8016 driver, and for the required DVR units.

Therefore, the required license includes:

- WW8000 Composer (project configuration and download): Composer License or Service key.
- MM8000 core, no. of subsystems.
This license should include the number of DVR units.
- DLCS add-on license.
- DLCS driver license.

Other licenses, covering more MM8000 options, may or may not be used and they are not related to the DLCS support.

2.1.2 DLCS add-on installation

The following are the installation procedures for the DLCS add-on module.

1. Start Add-on Manager; from the Windows Start menu, select the following:
Start → DMS8000 → Tools → Add-on Manager
The Add-on Manager window appears (Fig 1).
2. In the list of add-ons Names, select **DLCS**.

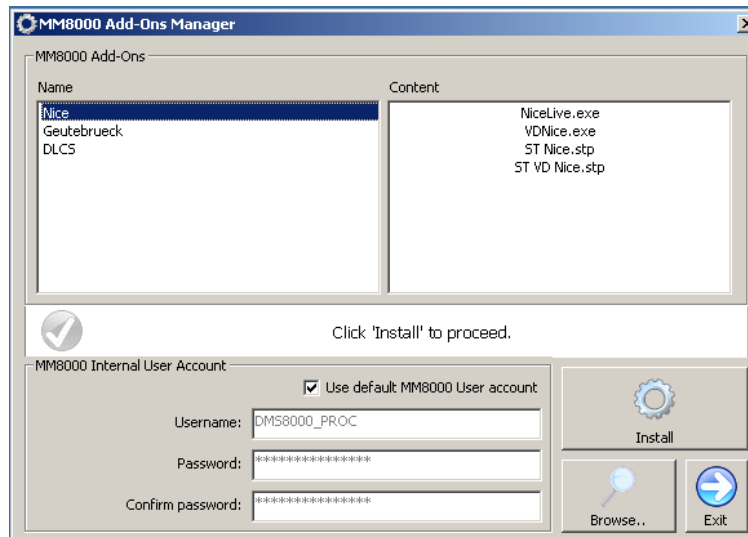


Fig 1 Add-on Manager Window

3. If your MM8000 installation includes a customized MM8000 internal account, then deselect the default checkbox (**Use default MM8000 User account**) and specify username and password.
 - For information about the MM8000 Internal Account, refer to section 3.4.12 of the MM8000 ICC, doc.no. A6V10062413_a_en.
4. Click **Install** (or **Update** if a previous version is detected).

2.1.2.1 Multiple add-on's installation

In general, it is possible to install multiple add-on packages and benefit of their combined functionalities.

2.1.3 DLCS add-on uninstall

The add-on module cannot be uninstalled.

3 Configuring DLCS

The DLCS (Door Light Control System) can monitor the state of doors and detect the related alarm states. Also, a control command may be optionally available for unlocking doors.

The MM8000 can communicate with DLCS by means of a networked OPC server (Siemens WinCC V6.0 SP2), which provides as many as 3 OPC items to represent the conditions of each door. The item list includes:

- Door status (open/closed)
- Door alarm (normal/alarmed)
- Door control command (unlock, optional)

The OPC items can be imported in Composer using a WinCC export file. Then, the items should be manually linked to the door objects in order to build up the Composer tree that can map the actual door state.

→ More than one OPC link can be supported, each one requiring the configuration of a DLCS node in Composer.

3.1 Configuration checklist

Verify that you have satisfied the items needed in the first checklist before proceeding to the configuration procedure that follows.


ITEMS NEEDED FOR CONFIGURATION

- The general system architecture and the number of WinCC connections that will require configuration for each DLCS unit.
- For each DLCS, the list of doors and the associated OPC items in WinCC
- The WinCC export file including all the DLCS items
- Plug-ins needed:
Plug-ins #252301 (ND Dics / ST ND OPC) and 353901 (DLCS / STDLCS2), which must be installed before you can configure your system

3.2 Configuration procedure

The following are the configuration procedures for a DLCS unit:

Adding the DLCS driver

1. Open the Composer project.
2. If not already done, add the OPC driver:
In the MM8000 physical configuration, select the main station name and then the Channel Collection.
'Supervisor System Settings → MM8000 System → Physical configuration → <Station name> → Channels Collection'.
3. Click the driver icon  to add the OPC driver (see Fig 2).
→ A new node is added. No further configuration is required for the OPC driver.

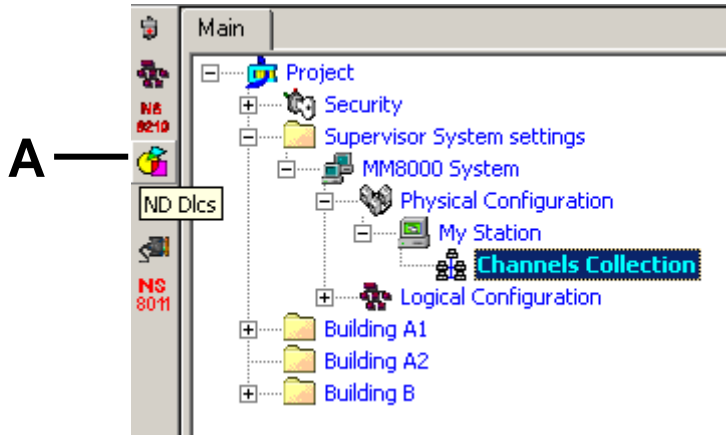



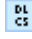
Fig 2 Adding the OPC driver

A Click this icon to add the OPC driver required for DLCS / WinCC

Adding the folder for the DLCS system

1. Optionally, create a folder for the DLCS unit.

Adding the DLCS node

1. Select the new folder.
2. Click the Access Control menu 
3. Select the DLCS icon  to add a new DLCS node (see Fig 3).

→ A new DLCS node is added to the Composer tree.

Note: By default, the node will be named 'DLCS #nn'. In the Node tab, you can customise the Description text.

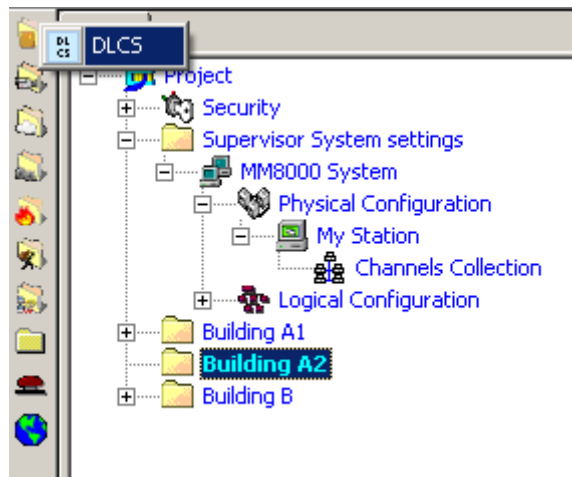


Fig 3 Adding the DLCS node

Linking the DLCS node to the OPC driver

1. Select and expand the Channels collection of the main station.
2. Select DLCS node.
3. Drag and drop the DLCS node to the OPC Driver node (see Fig 4).

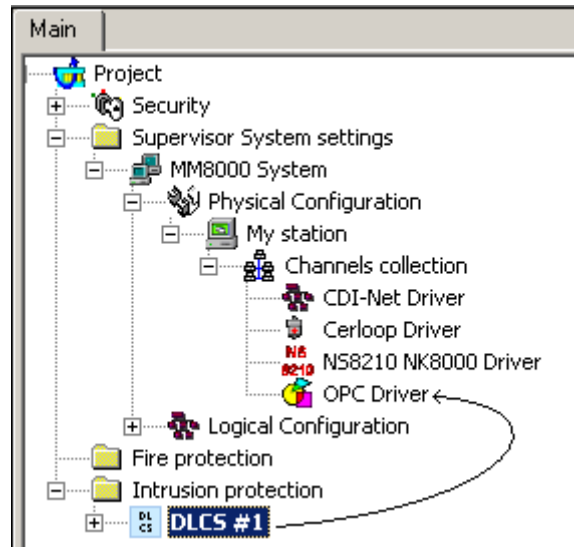


Fig 4 Linking DLCS node to the OPC Driver

Setting the server computer name or IP address

1. Select and expand the Channels collection of the main station.
2. Select and expand the OPC Driver node.
3. In the Node tab, set the Remote server name or IP address (see Fig 5).
By default, the field is set with the local IP address.



– Note that the next field (WinCC server name) contains by default the standard WinCC settings. Do not modify the default value.

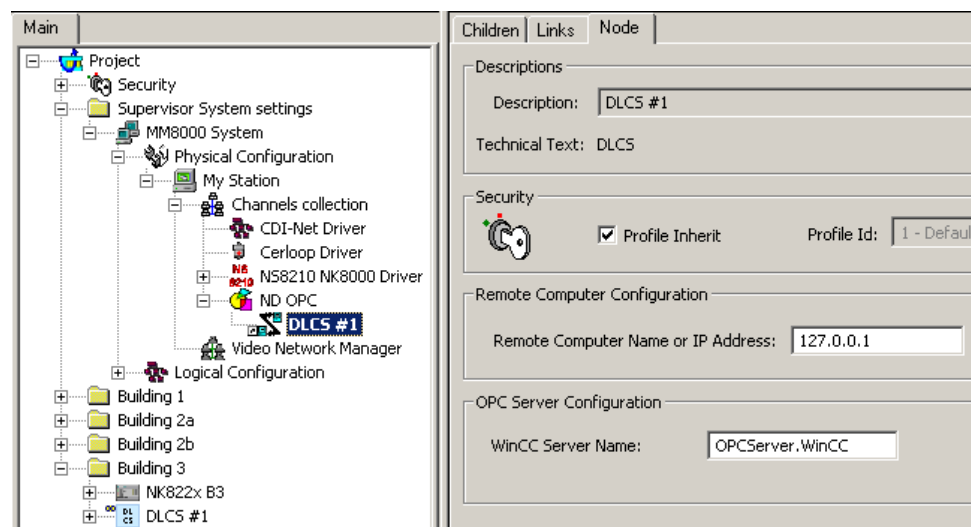


Fig 5 Setting server computer name or IP address



In case of network-distributed solutions, be aware that DCOM security must be configured in order to enable the correct communication over the network.

In general, the MM8000 internal user (→ see MM8000 Installation, Configuration, and Commissioning manual) must be recognised by the server (i.e. defined locally on the server computer or at domain level) and granted the DCOM permissions for the WinCC process (DCOMCNFG settings).

Also, the computer running MM8000 should be configured in order to grant access the user of the WinCC server.

Importing the WinCC OPC items

1. Select and expand the DLCS node.
2. Select the 'Namespace' node.
3. Select Tools→Import in the Composer menu (see Fig 6)

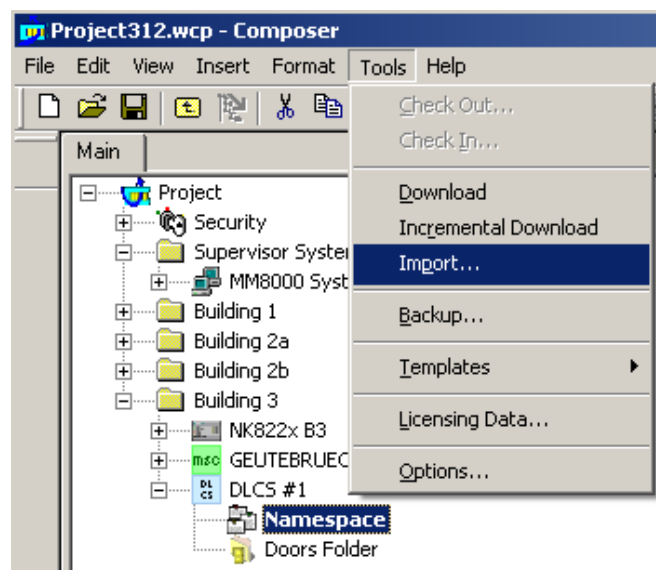


Fig 6 Importing the OPC items

→ After a confirmation request, the software presents a browsing window to search for the file to import (a file with extension CSV is expected).

4. Locate the CSV file and click 'Open'.

→ In a few moments, the OPC items are imported in the Composer tree.



Selecting the 'Import' tab results in a page report being displayed. This page contains the detailed logs of the latest import procedure, including all the added or removed objects.



A new CSV file can be imported after a configuration change. Note the behaviour of the import procedure:

- New objects in CSV (not configured in Composer) are added to the configuration.
- Old objects in CSV (already configured in Composer) are updated.
- Removed objects in CSV (configured in Composer) are removed.

Setting the OPC items property

The OPC items should be configured to set the type of item in relation to the DLCS application. The type can be:

- Unused
- Door Status
- Door Alarm
- Door Open Command

In order to set the item type, proceed as follows:

1. Select and expand the 'Namespace' node.
2. Select the first OPC item used by DLCS and click the Node tab.
3. In the Item Type drop-down list, set the type (see Fig 7).
4. Repeat steps 2 and 3 for the remaining items used by DLCS.

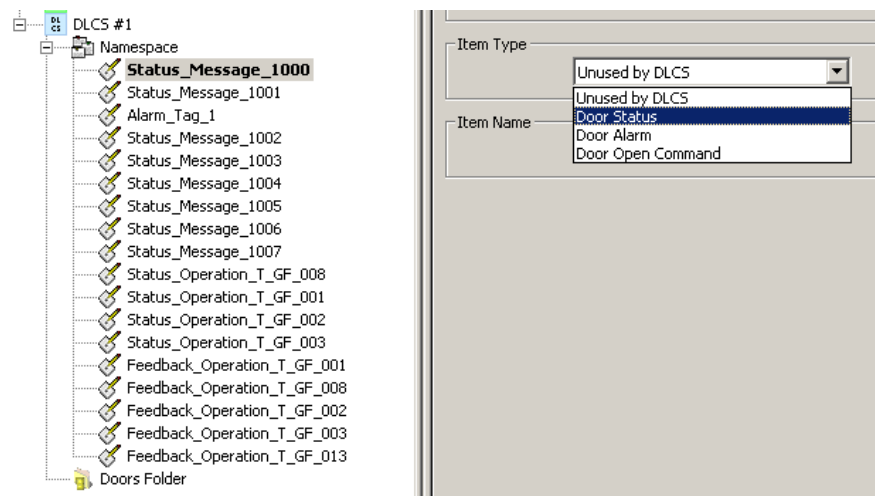


Fig 7 Setting the item type on the Node tab

Note: If you are familiar with the Composer tool, select the Children tab of the 'Namespace' node. At this point, you can quickly set the item types in the spreadsheet page (see Fig 8).

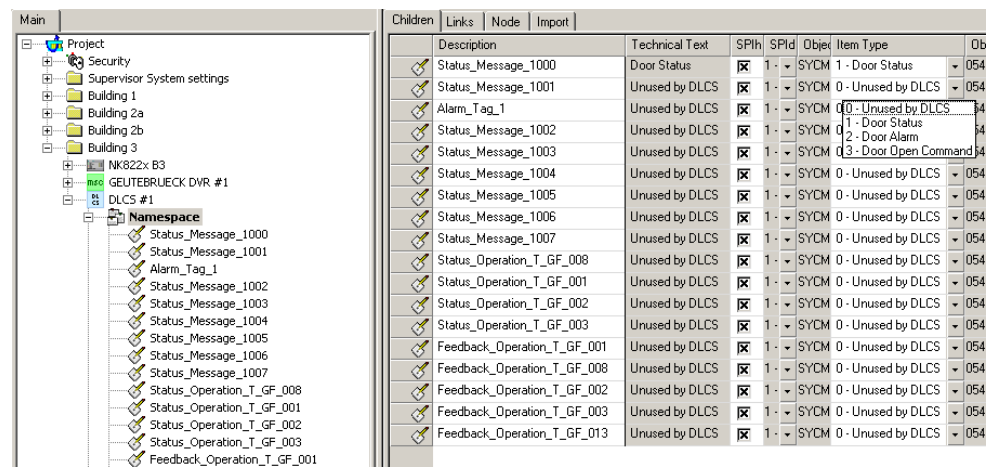



Fig 8 Setting the item types on the Namespace Children tab

Adding the door nodes

1. Select and expand the DLCS node.
2. Select the 'Doors folder'.
3. Click the door icon  to add a new door (see Fig 9)
 - A new Door node is added to the Composer tree.

Note: By default, the node will be named 'Door #nn'. In the Node tab, you can customise the Description text.

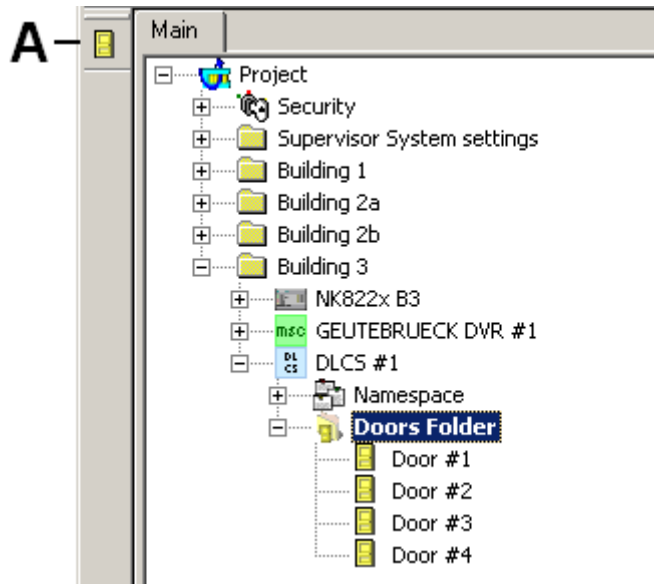


Fig 9 Adding a new door

A Click this icon to add a new door

Linking the OPC items to the door nodes

1. Select and expand the DLCS node.
2. Select and expand the 'Namespace' node.
3. Select and expand the 'Door folder'.
4. Drag and drop the OPC items to the corresponding door (see Fig 10).

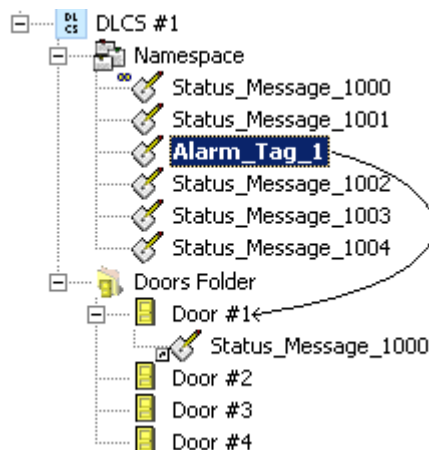


Fig 10 Linking OPC items in the Composer tree

Note: If you are familiar with the Composer tool, click the Children tab of the 'Namespace' node. At this point, you can select the three associated items (keep the Ctrl key pressed and click them all) and then drag and drop them together to the corresponding door node (see Fig 11).

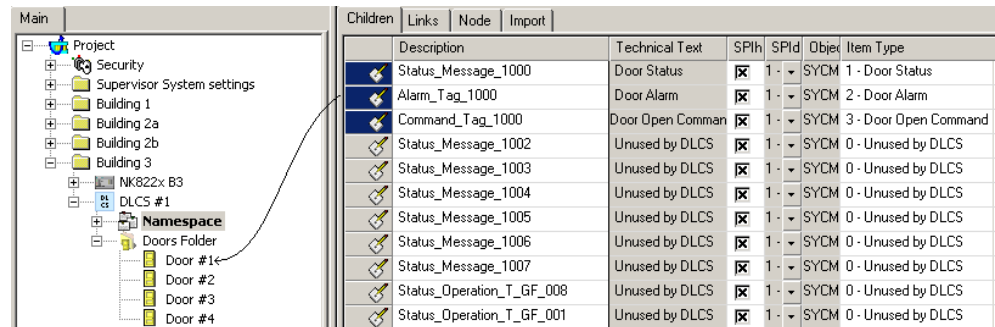


Fig 11 Linking OPC items from the Namespace Children tab



Each door requires a link to at least two items (Door Status and Door Alarm), whereas the third item (Open Command) may or may not be present depending on whether the door can be remotely unlocked or not.

Door nodes that are not properly linked to two or three OPC items will not be downloaded (an error message will display during the download procedure).

Siemens Switzerland Ltd
Building Technologies Group
International Headquarters
Fire Safety & Security Products

Gubelstrasse 22
CH-6301 Zug

Tel +41 41 724 24 24
Fax +41 41 724 35 22

www.sbt.siemens.com