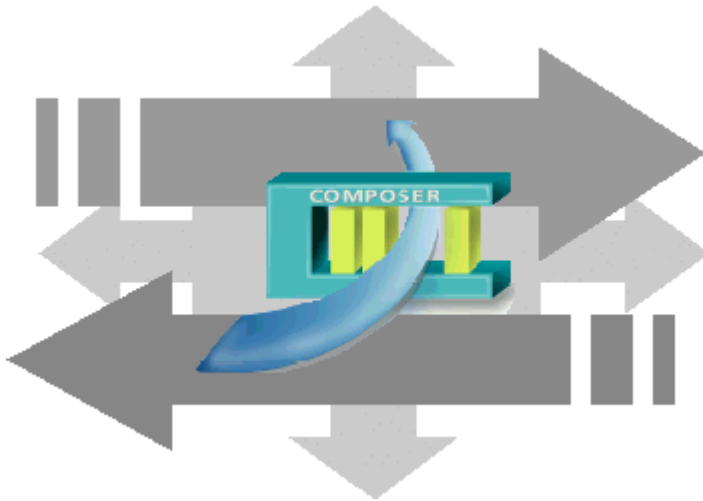


SIEMENS



DMS8000 MP4.xx

Geutebrück MultiScope DVR

Add-on module

Installation, Configuration,
and Operations guide

Building Technologies

Fire Safety & Security Product

Data and design subject to change without notice. / Supply subject to availability.

© 2010 Copyright by
Siemens Building Technologies AG

We reserve all rights in this document and in the subject thereof. By acceptance of the document the recipient acknowledges these rights and undertakes not to publish the document nor the subject thereof in full or in part, nor to make them available to any third party without our prior express written authorization, nor to use it for any purpose other than for which it was delivered to him.

About this document.....	2
1 Introduction	4
2 Installation	4
2.1 Software installation.....	4
2.1.1 Requirements.....	4
2.1.2 Software License.....	4
3 Configuring CCTV network	5
3.1 Video integration.....	5
3.2 Video Network Manager	5
3.2.1 Video Drivers.....	6
3.3 CCTV components	6
3.4 Geutebrück MultiScope (MSC) DVR configuration.....	8
3.4.1 Configuration checklist.....	8
3.4.2 Configuration procedure	9
3.5 Limitations	11

About this document

Purpose of this document

This manual is a guide to the configuration procedures for the integration of Geutebrück Video systems in MM8000 management stations.

This guide is part of the general DMS8000 documentation set which includes the Composer Technical Manual, the other DMS8000 Connectivity Guides (Network/Fire/Intrusion, Access Control, and OPC), and the Installation, Configuration, and Commissioning manual (ICC) for each specific product.

Scope

This document applies to the MM8000 Management Station MP4.15 and higher.

Target audience

This documentation is intended for the following users:

- Project Managers
- Project Engineers
- Commissioning Personnel

Individuals performing the operations described in this manual are expected to have prior expertise and training in the field of security, at least a moderate level of familiarity with the Siemens Building Technologies product line, and experience with the installation, configuration, and commissioning of security management systems.


Documentation resource information

The **DMS8000 Documentation Resource Information Guide** document assembles in one place important information regarding documentation resources. It contains the following:

- Comprehensive definitions of the target audiences for FS DMS documents
- Training program information including the Siemens intranet link
- A complete list of all available DMS8000 documents
- Instructions for how to obtain a document via the Siemens intranet using the STEP Documentation Repository System
- A map of relevant documents for each target audience group
- Customer Support links & resources
- A glossary containing definitions of all terms and acronyms used in DMS8000 documentation

To access the **DMS8000 Documentation Resource Information Guide** (STEP #A6V10089056), go to the link and follow the instructions below:

<https://workspace.sbt.siemens.com/content/00001123/default.aspx>

1. Click on the **STEP WEB Client** image: 
2. Choose **04 Fire -3F** from the **Product Segment** box and select **Activate filter**.
3. Select **All** in the **Documents** section of the **Quick Search** page and then select **Advanced Search**.
4. Enter the document number in the **Brochure No.** field (e.g. A6V10089056) and press **Enter**.

Operational and safety regulations



Before beginning work on the DMS8000 systems, you must have read and understood the related documents, in particular the Safety Regulations included in the Installation, Configuration, and Commissioning manual (ICC) for each specific product.

Liability disclaimer for damage or injuries

Before products are delivered, they are tested to ensure they function correctly when used properly. Siemens disclaims all liability for damage or injuries caused by the incorrect application of the instructions, or the disregard of danger advisories. This disclaimer applies in particular to personal injuries or damage caused by:

- Improper and/or incorrect use.
- Disregard of safety instructions in the documentation or on the product.
- Poor maintenance or a lack of maintenance.

We have checked the contents of this manual for agreement with the hardware and software described. Since deviations cannot be precluded entirely, we cannot guarantee full agreement. However, the data in this manual are reviewed regularly and any necessary corrections included in subsequent editions. Suggestions for improvement are welcome.

Modification index

Version	Date	Notes
A6V10067792_a_en	06.2009	Corresponds with DMS8000 MP4.20
A6V10067792_a_en	06.2008	Corresponds with DMS8000 MP4.15
A6V10067792_a_en	06.2007	Corresponds with DMS8000 MP4.10
009424_b_en	06.2006	Corresponds with DMS8000 MP3.20

1 Introduction

This is a guide to the software configuration procedures for the Geutebrück MultiScope Digital Video Recorder (DVR) in the MM8000 Management Station and MK8000 OPC server.

For a complete guide to the configuration process, this manual should be used with the DMS8000 Network, Fire and Intrusion Guide, and with the Installation, Configuration and Commissioning manual (ICC) of the specific product.

Video devices software version

The exact software version to use in the video device to integrate into the DMS8000 systems is indicated in the latest MM8000 or MK8000 Release Notes.

2 Installation

The Geutebrück package is provided in the MM8000 product CD as add-on. It can be installed using the standard Add-on Manager.

2.1 Software installation

2.1.1 Requirements

The **Geutebrück Multiview** application is required for running MM8000 with Geutebrück MultiScope. This application should be installed before MM8000.

Geutebrück settings utilities

The DMS8000 directory:

<installation folder>\Utilities\Reg
(usually C:\Program Files\Utilities\Reg)

contains the following registry-setting scripts:

- Geutebrueck - Set Multiview User connection routing.reg
Enable Multiview application for all Windows users.
- Geutebrueck - Multiview without MM8000.reg

Set Multiview application for stand-alone use (upon starting up, MM8000 reduces to minimum, i.e. to the sole screen image, the application window).

2.1.2 Software License

MM8000 license must include specific items for the Geutebrück Add-on, for the driver, and for the required DVR units.

Therefore, the required license includes:

- WW8000 Composer (project configuration and download): Composer License or Service key.
- MM8000 core, no. of subsystems.
This license should include the number of DVR units.
- Geutebrück add-on license.
- Geutebrück driver license.

Other licenses, covering more MM8000 options, may or may not be used and they are not related to the Geutebrück support.

3 Configuring CCTV network

3.1 Video integration

The DMS8000 systems MM8000 and MK8000 can support the connection to Geutebrück MultiScope Digital Video Recorder (DVR) in the following way:

- Integration of video network, made up of the following devices:

Manufact.	Model	Device type
Geutebrück	MultiScope II Plus	Digital Video Recorder (DVR)
Geutebrück	MultiScope III	Digital Video Recorder (DVR)

This integration allows providing advanced control capabilities as well as the access to video images in MM8000 event treatment and navigation.

A detailed configuration guide for this video device is provided in this section.

3.2 Video Network Manager

The advanced video functionalities require a basic communication infrastructure between MM8000/MK8000 and the CCTV units; this is actually a LAN network.

In Composer, a Video Network Manager and the associated drivers should be added to the MM8000/MK8000 main station in order to support the video network communication. The drivers concern the SISTORE, the TELSCAN, and the MultiScope units.

The Fig 1 illustrates how to add the VNM to the configuration:

- In the MM8000 physical configuration, select the main station name: 'Supervisor System Settings → MM8000 System → Physical configuration → <Station name>'.

In the MK8000 project, the selection is quite similar:

'MK8000 System → MK8000 → Physical configuration → <Station name>'.

- Click the button A to add the VNM (see Fig 1).

A new node is added. No further configuration is required for the VNM.

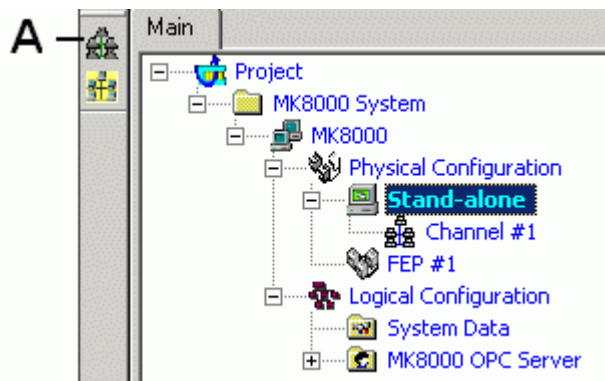


Fig 1 Adding the Video Network Manager (A)

Note: Adding the VNM results in the entire Composer project being expanded in order to support the CCTV functions. Particularly, the new tab 'Camera Extensor' is added to all nodes. Depending on the size of the configuration tree, the operation may take a few minutes.

The Composer plug-in #251701 is required.

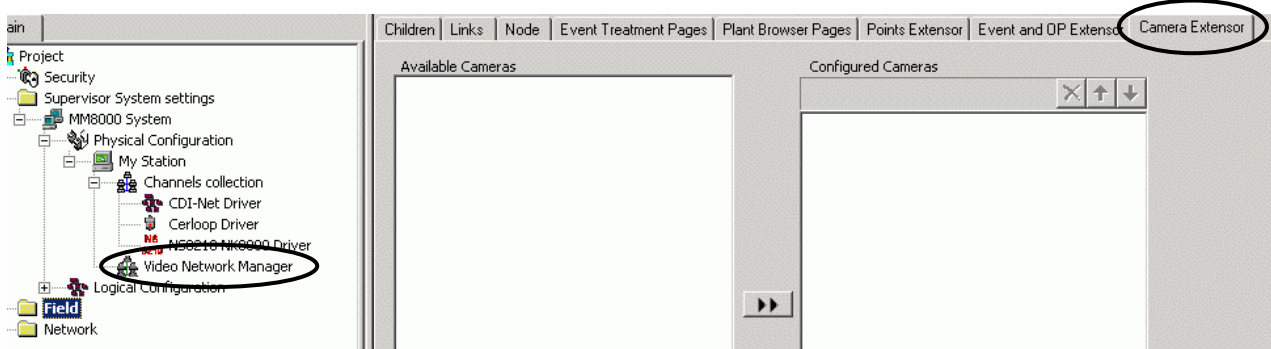


Fig 2 New tab added by the VNM in the MM8000 project

3.2.1 Video Drivers

The VNM can support the drivers required to handle the network communication with:

- Geutebrück MultiScope (OPC driver)

Depending on the specific configuration required, add one or both drivers to your project. Proceed as follows:

1. Select the VNM node.
2. In the toolbar, click the icon corresponding to the driver you need (Fig 3):
C – Geutebrück MultiScope (OPC driver)

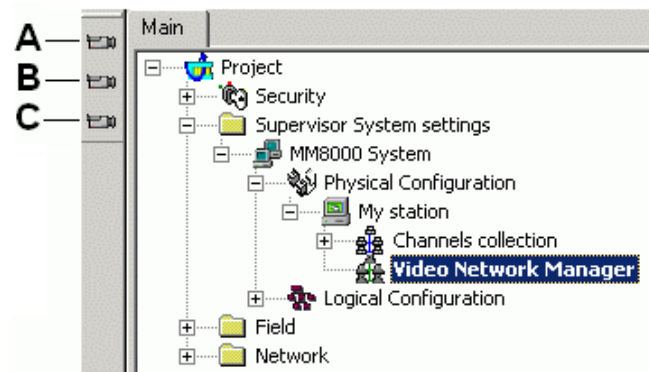


Fig 3 Video drivers

- A Select this icon to add the SISTORE driver
- B Select this icon to add the TELSCAN driver
- C Select this icon to add the OPC client driver (Geutebrück MultiScope)

3.3 CCTV components

If the VNM is present, the Video menu of the Composer button bar on the left hand side includes an additional icon, corresponding to the following CCTV component:

- Geutebrück MultiScope Digital Video Recorder (DVR)

The following Fig 4 illustrates the menu options and the corresponding CCTV components.

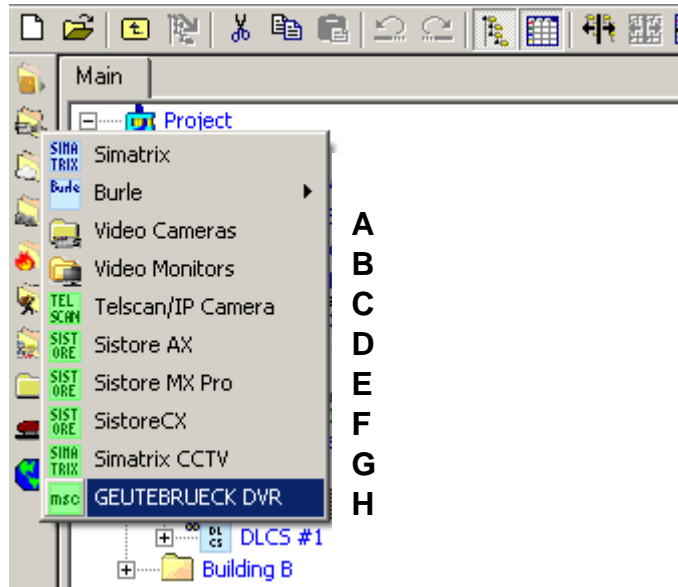


Fig 4 CCTV components menu

- A Select this icon to add a Camera folder
- B Select this icon to add a Monitor folder
- C Select this icon to add a TELSCAN Video Web Server
- D Select this icon to add a SISTORE AX Digital Video Recorder (DVR)
- E Select this icon to add a SISTORE MX and MX Pro Digital Video Recorder (DVR)
- F Select this icon to add a SISTORE CX and SX Digital Video Recorder (DVR)
- G Select this icon to add a SIMATRIX switching crossbar
- H Select this icon to add a Geutebrück MultiScope (MSC) Digital Video Recorder

3.4 Geutebrück MultiScope (MSC) DVR configuration

The Geutebrück MultiScope (MSC) is a family of Digital Video Recorders capable of acquiring the video signals from 4, 8, 16 or 32 cameras, showing the images on a local monitor, and storing them in digital form on local hard disks.

- Options are also available for video outputs and input/output management
- The host connection is based on a TCP/IP connection on a LAN network

Two basic MultiScope models and a total of 12 variants can be configured in the MM8000 Video Network. Namely:

- MultiScope II Plus, handling 4, 8, 2x4 dual-speed, 16, 4x4 quad-speed, and 32 video inputs.
- MultiScope III, supporting 4, 8, 2x4 dual-speed, 16, 4x4 quad-speed, and 32 video inputs.

MSC models and variants only differ on the number of cameras, and their configuration in Composer is exactly the same (as illustrated in this section).



In the Geutebrück MultiScope DVRs, MM8000 only supports the video and monitoring functions related to camera inputs.



In case of network-distributed solutions, be aware that DCOM security must be configured in order to enable the correct communication over the network.

In general, the MM8000 internal user (→ see MM8000 Installation, Configuration, and Commissioning manual) must be recognised by the server (i.e. defined locally on the server computer or at domain level) and granted the DCOM permissions for the Video server process (DCOMCNFG settings).

Also, the computer running MM8000 should be configured in order to grant access the user of the video server.

3.4.1 Configuration checklist

Verify that you have satisfied the items needed in the first checklist before proceeding to the configuration procedure that follows.

ITEMS NEEDED FOR CONFIGURATION

- The MultiScope model and variant, i.e. the number of video inputs
- The MultiScope parameter settings, including:
 - Local address (0 to 99)
 - IP address
- The camera connections
- Video application required for integrating Geutebrück MultiScope:
 - Geutebrück Multiview
- Plug-ins needed:
 - Plug-ins #252101 (ST DV SIVMS / ST VD OPC) and 353801 (OPCDVRST / OPC DVR ST), which must be installed before you can configure your system

3.4.2 Configuration procedure

The following are the configuration procedures for a MultiScope unit:

Adding the required Composer Plug-ins

1. Start the Subsystem Plug-in Installer, in the Windows Start menu, launch the program:
 Start → Programs → DMS8000 → Tools → Subsystem Plug-in Installer
The Installer tool starts up and shows a dual-pane window.
2. In the right pane, select “Browse” and locate the Plug-in folder (see Fig 5).
 This is a subfolder of the DMS8000 software, normally installed in “C:\Program files”. However, depending on your national version of Windows and on the options selected during the software installation, this folder may have a different location on your hard disks.

Note that in the DMS800 folder there are multiple subfolders containing Composer Plug-ins; e.g.:

- ST Plug-ins, which contains tools for MP3.20
- ST Plug-ins MP4.xx (e.g. MP4.10), which contains tools for MP4.xx

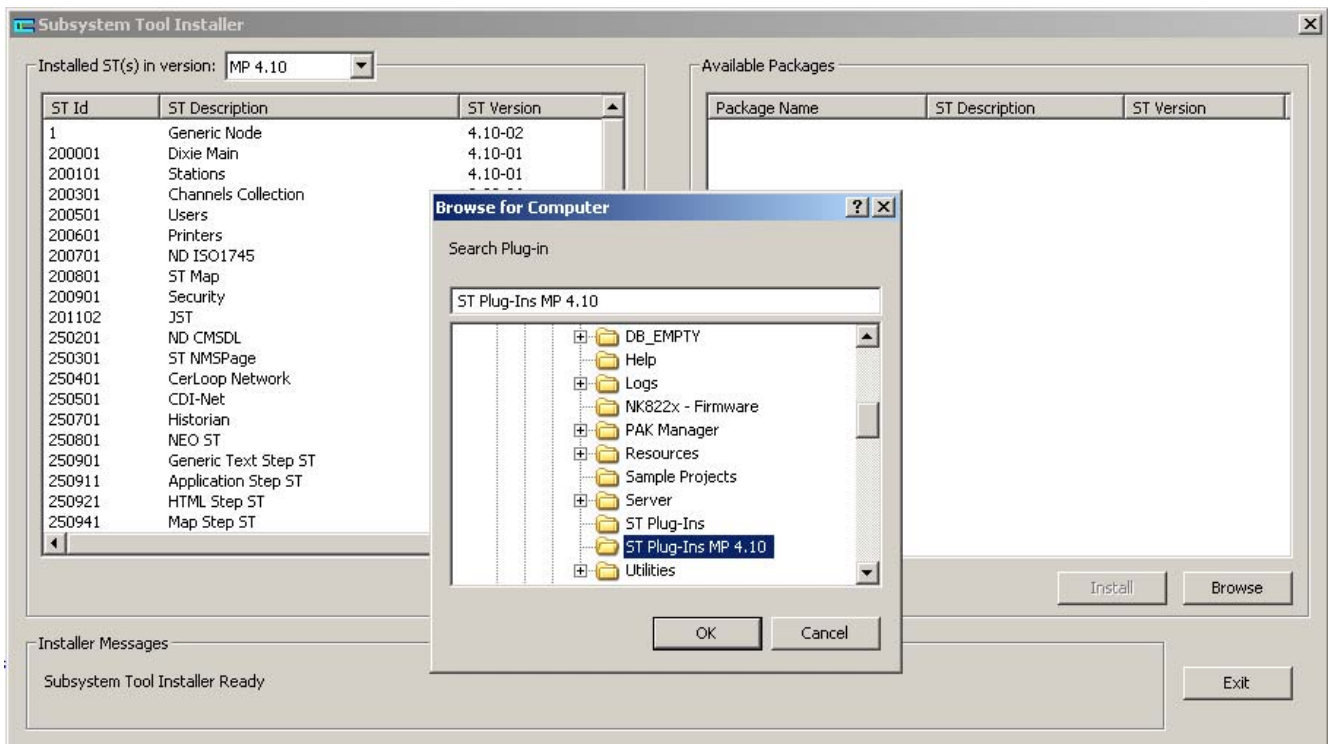


Fig 5 Installing the Composer Plug-ins

3. Click OK and open the Plug-in folder.
 At this point, the pane on the right hand side shows the available packages.
4. Select the following packages:
 - ST VD SIVMS – ST VD OPC (252101)
 - ST OPCDRVST – OPC DRV ST (353801)
 and click “Install” for each of them.
5. Check the resulting message at the bottom of the Installer window.

Adding the Video Network Manager

1. Open the Composer project.
2. If not already done, add the Video Network Manager:
 - see 3.2 at p.5
 - and the MultiScope driver:
 - see 3.2.1 at p.6.

Adding the folder for the MultiScope system

- Optionally, create a folder for the MultiScope unit.

Adding the MultiScope node

1. Select the new folder.
2. Click the Video menu 
3. Select the “Geutebrueck DVR” icon  to add a MultiScope node
 - see Fig 4 at p. 7.

Configuring the MultiScope variant and addresses

1. Select new MultiScope node and click the Node tab.

Note: By default, the node will be named ‘GEUTEBRUECK DVR #nn’. In the Node tab, you can customise the Description text.

2. Select the model and variant of the DVR (see Fig 6).

By default, the model is set to the first option (4 camera inputs). If necessary, open the drop-down list of the ‘Device Type’ field and select one of the other options. The list includes:

- MSC2+/4, MSC2+/4C, MSC2+/4CI: 4 camera inputs
- MSC2+/8: 8 camera inputs
- MSC2+/16: 16 camera inputs
- MSC2+/32: 32 camera inputs
- MSC2+/2x4: 8 camera inputs (dual speed)
- MSC2+/4x4: 16 camera inputs (quad speed)
- MSC3/4: 4 camera inputs
- MSC3/8: 8 camera inputs
- MSC3/16: 16 camera inputs
- MSC3/32: 32 camera inputs
- MSC3/2x4: 8 camera inputs (dual speed)
- MSC3/4x4: 16 camera inputs (quad speed)



The Device Type selection only affects the number of camera inputs that are available in the Composer tree. Note that the device type cannot be set to a smaller model. Be aware that you can safely operate with a configuration larger than the actual device.

3. Fill in the address fields (see Fig 6):

a. Local address: Enter a value from 0 to 99 according to the actual DVR setting (refer to the MultiScope documentation).

b. IP address, which should match the value set in the MultiScope (refer to the MultiScope documentation).

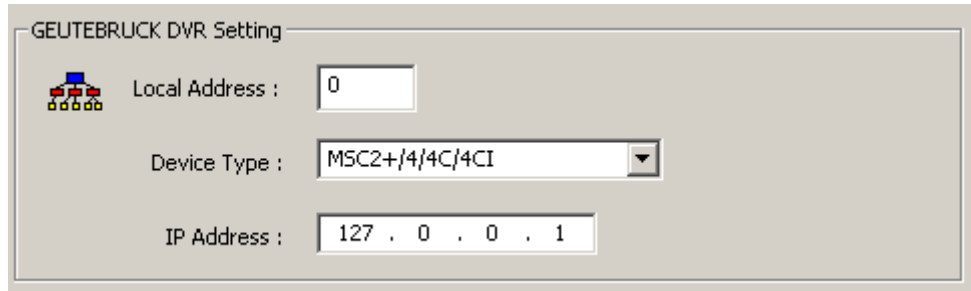


Fig 6 MultiScope DVR settings

Connecting the cameras

1. Select and expand the MultiScope node.
2. Select and expand the MultiScope Video-in folder.
3. Select and expand the Video Camera folder.
4. Select the video-out node of the camera.
5. Drag and drop the 'video signal' to the MultiScope video-in node (Fig 7).

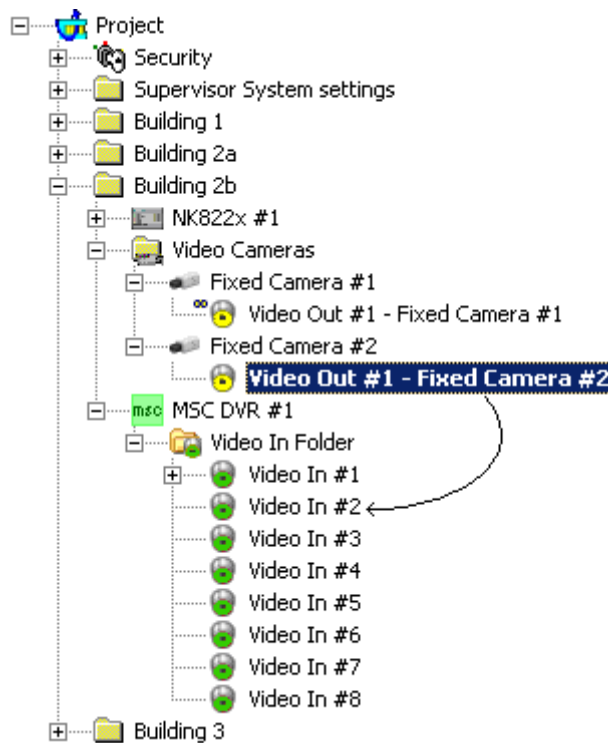


Fig 7 Connecting cameras to MultiScope

3.5 Limitations

Currently, the support of Geutebrück units is subject to the following limitations (please check latest news with customer support):

- Only 1 live video display per station at the time is possible.

Siemens Switzerland Ltd
Building Technologies Group
International Headquarters
Fire Safety & Security Products

Gubelstrasse 22
CH-6301 Zug

Tel +41 41 724 24 24
Fax +41 41 724 35 22

www.sbt.siemens.com