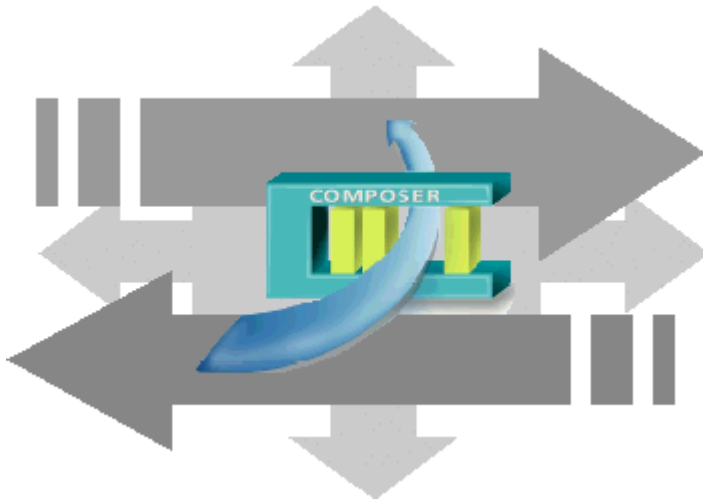


# SIEMENS



## **DMS8000 MP4.20**

### **Video Connectivity Guide**

- **Siemens SIMATRIX, TELSCAN, SISTORE**
- **Burle/Philips LTC8000**
- **Light-integration Device (External Viewer)**

Data and design subject to change without notice. / Supply subject to availability.

© 2009 Copyright by  
Siemens Building Technologies AG

We reserve all rights in this document and in the subject thereof. By acceptance of the document the recipient acknowledges these rights and undertakes not to publish the document nor the subject thereof in full or in part, nor to make them available to any third party without our prior express written authorization, nor to use it for any purpose other than for which it was delivered to him.

# Table of contents

<b>About this document.....</b>	<b>2</b>
<b>1 Introduction .....</b>	<b>4</b>
1.1 <b>What has been changed in MP4.20 configuration tools .....</b>	<b>4</b>
<b>2 Configuring CCTV network .....</b>	<b>5</b>
2.1 <b>Video integration.....</b>	<b>5</b>
<b>2.2 Video Network Manager .....</b>	<b>5</b>
2.2.1 Video Drivers.....	6
<b>2.3 CCTV components.....</b>	<b>7</b>
2.3.1 Video Connections.....	8
2.3.2 Configuration checklist of CCTV network .....	9
<b>2.4 Camera configuration.....</b>	<b>10</b>
2.4.1 Configuration checklist.....	10
2.4.2 Configuration procedure .....	10
2.4.3 Cameras configuration tips .....	12
<b>2.5 Monitor configuration.....</b>	<b>13</b>
2.5.1 Configuration checklist.....	13
2.5.2 Configuration procedure .....	13
<b>2.6 TELSCAN/IP Cameras configuration .....</b>	<b>15</b>
2.6.1 Configuration checklist.....	15
2.6.2 Configuration procedure .....	15
2.6.3 TELSCAN configuration tips .....	17
<b>2.7 SIMATRIX configuration.....</b>	<b>19</b>
2.7.1 Configuration checklist.....	20
2.7.2 Configuration procedure .....	20
2.7.3 SIMATRIX configuration tips.....	23
<b>2.8 SISTORE DVR configuration.....</b>	<b>25</b>
2.8.1 Configuration checklist.....	25
2.8.2 Configuration procedure .....	26
2.8.3 SISTORE configuration tips .....	30
<b>2.9 Configuring a Philips/Burle CCTV switcher .....</b>	<b>33</b>
2.9.1 Configuration checklist.....	33
2.9.2 Configuration procedures.....	34
<b>2.10 Configuring a Light-integration Device (External Viewer).....</b>	<b>38</b>
2.10.1 Configuration checklist.....	38
2.10.2 Configuration procedures.....	39

# About this document

---

## Purpose of this document

This manual is a guide to the configuration procedures for the integration of Video system in the DMS8000 systems: MM8000 management station and MK8000 OPC server).

This guide is part of the general DMS8000 documentation set which includes the Composer Technical Manual, the other DMS8000 Connectivity Guides (Network/Fire/Intrusion, Access Control, and OPC), and the Installation, Configuration, and Commissioning manual (ICC) for each specific product.

## Target audience

This documentation is intended for the following users:

- Project Managers
- Project Engineers
- Commissioning Personnel

Individuals performing the operations described in this manual are expected to have prior expertise and training in the field of security, at least a moderate level of familiarity with the Siemens Building Technologies product line, and experience with the installation, configuration, and commissioning of security management systems.


## Documentation resource information

The DMS8000 Documentation Resource Information and Glossary Guide assembles important information regarding documentation resources. This document contains the following:

- Comprehensive definitions of the target audiences for Siemens FS DMS documents
- Training program information including the Siemens intranet link
- A complete list of all available DMS8000 documents
- Instructions for how to obtain a document via the Siemens intranet using the STEP Documentation Repository System
- A map of relevant documents for each target audience group
- Customer Support links & resources
- A glossary containing definitions of all terms and acronyms used in DMS8000 documentation

To access the *DMS8000 MP4.20 Documentation Resource Information and Glossary Guide* (STEP #A6V10089056), go to the link and follow the instructions below:

<https://workspace.sbt.siemens.com/content/00001123/default.aspx>

1. Click on the **STEP Web Client** image: 
2. Choose **04 Fire -3F** from the Product Segment box and select **Activate filter**.
3. Select **All** in the Documents section of the Quick Search page and then select **Advanced Search**.
4. Enter the document number in the Brochure No. field (**A6V10089056**) and then press **Enter**.

## Operational and safety regulations



Before beginning work on the DMS8000 systems, you must have read and understood the related documents, in particular the Safety Regulations included in the Installation, Configuration, and Commissioning manual (ICC) for each specific product.

### Liability disclaimer for damage or injuries

Before products are delivered, they are tested to ensure they function correctly when used properly. Siemens disclaims all liability for damage or injuries caused by the incorrect application of the instructions, or the disregard of danger advisories. This disclaimer applies in particular to personal injuries or damage caused by:

- Improper and/or incorrect use.
- Disregard of safety instructions in the documentation or on the product.
- Poor maintenance or a lack of maintenance.

We have checked the contents of this manual for agreement with the hardware and software described. Since deviations cannot be precluded entirely, we cannot guarantee full agreement. However, the data in this manual are reviewed regularly and any necessary corrections included in subsequent editions. Suggestions for improvement are welcome.

### Modification index

Version	Date	Notes
A6V10062457_a_en	06.2009	Corresponds with DMS8000 MP4.20
A6V10062457_a_en	06.2008	Corresponds with DMS8000 MP4.15
A6V10062457_a_en	06.2007	Corresponds with DMS8000 MP4.10
009425_b_en	06.2006	Corresponds with DMS8000 MP3.20

# 1 Introduction

---

This is a guide to the software configuration procedures for the Video systems in the MM8000 Management Station and MK8000 OPC server.

For a complete guide to the configuration process, this manual should be used with the DMS8000 Network, Fire and Intrusion Guide, and with the Installation, Configuration and Commissioning manual (ICC) of the specific product.

## **Video devices software version**

The exact software version to use in the video device to integrate into the DMS8000 systems is indicated in the latest MM8000 or MK8000 Release Notes.

## 1.1 What has been changed in MP4.20 configuration tools

---

Here is the list of modifications included in MP4.20 for new functions and software improvements.

<b>Section, Page</b>	<b>Modifications</b>
p. 6	Enhanced Camera Extensor Tab and reference to the new Preset Position configuration
p. 11	New ODR alarm for video cameras in DVRs that can support it
p. 32	Special registry setting to disable unnecessary events about normal video recordings.

## 2 Configuring CCTV network

### 2.1 Video integration

---

The DMS8000 systems MM8000 and MK8000 can support the connection to the integrated CCTV devices<sup>1</sup> in two different ways:

- Connectivity to the following video matrix subsystems:

<b>Manufact.</b>	<b>Model</b>	<b>Device type</b>
Siemens	SIMATRIX	Switching matrix
Philips/Burle	LTC8000 family	Switching matrix

in order to monitor their status and command the camera/monitor switching.

- Integration of video network, made up of the following devices:

<b>Manufact.</b>	<b>Model</b>	<b>Device type</b>	<b>Notes</b>
Siemens	SIMATRIX	Switching matrix	
Siemens	SISTORE AX	Digital Video Recorder (DVR)	
Siemens	SISTORE CX	Digital Video Recorder (DVR)	
Siemens	SISTORE MX	Digital Video Recorder (DVR)	
Siemens	SISTORE MX (NVR)	Network Video Recorder (NVR)	1
Siemens	SISTORE MX Pro	Digital Video Recorder (DVR)	
Siemens	SISTORE SX	Digital Video Recorder (DVR)	
Siemens	TELSCAN	Video web server for up to 4 cameras	
Siemens	IP Cameras	CCIS 1337-LP, CFVA-IP, CVVA-IP	2

Notes:

- 1) Network Video Recorder (NVR). Software only, for fixed IP cameras only.
- 2) Connected via SISTORE MX / MX (NVR) or directly over LAN. In the latter case, they are configured as single-line TELSCAN.

This integration allows providing advanced control capabilities as well as the access to video images in MM8000 event treatment and navigation.

In the integration with the MK8000 OPC server, the states of video devices and objects are provided in OPC format to the OPC clients.

A detailed configuration guide for the video devices is provided in this section.

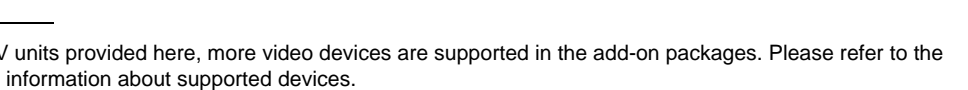
### 2.2 Video Network Manager

---

The advanced video functionalities require a basic communication infrastructure between MM8000/MK8000 and the CCTV units; this is actually a LAN network.

In Composer, a Video Network Manager and the associated drivers should be added to the MM8000/MK8000 main station in order to support the video network communication. The drivers concern the SISTORE, the TELSCAN, and the MultiScope units.

The Fig 1 illustrates how to add the VNM to the configuration:

1. In the MM8000 physical configuration, select the main station name:  
'Supervisor System Settings → MM8000 System → Physical configuration → <Station name>'.  


---

<sup>1</sup> Note that, beyond the list of CCTV units provided here, more video devices are supported in the add-on packages. Please refer to the Product Release Notes for detailed information about supported devices.

In the MK8000 project, the selection is quite similar:  
 'MK8000 System → MK8000 → Physical configuration → <Station name>'.  
 2. Click the button A to add the VNM (see Fig 1).  
 A new node is added. No further configuration is required for the VNM.

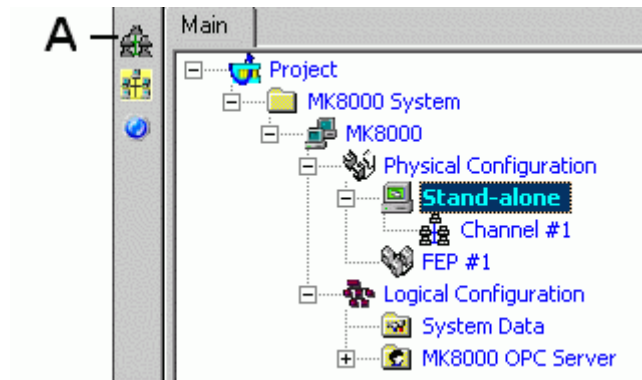


Fig 1 Adding the Video Network Manager (A)

**Note:** Adding the VNM results in the entire Composer project being expanded in order to support the CCTV functions. Particularly, a new **Camera Extensor** tab is added to all nodes. Depending on the size of the configuration tree, the operation may take a few minutes.

The Composer plug-in #251701 is required.

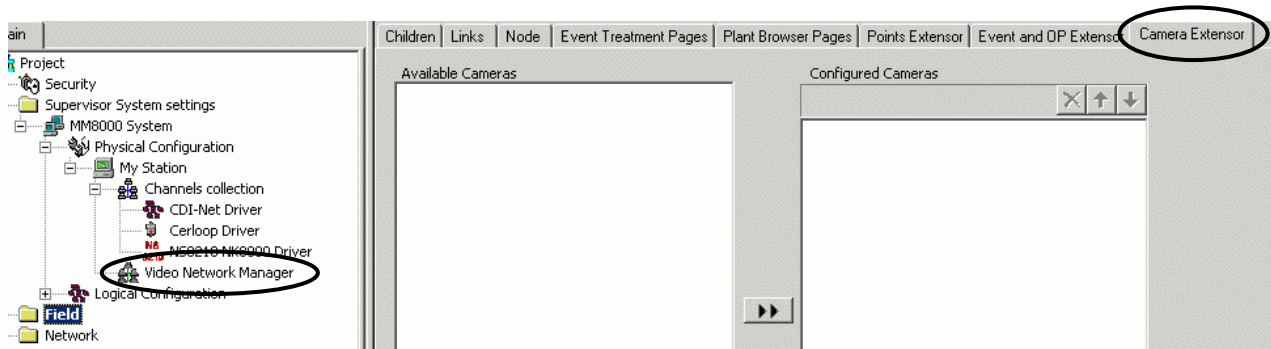


Fig 2 New tab added by the VNM in the MM8000 project

### Camera Extensor tab

In the **Camera Extensor** tab, you can see the camera associations and manually add one or more cameras to the list associated with the selected node. Also, for dome and PTZ cameras, you can set the default **Preset Position** (where the camera is moved when it is first selected during event treatment).

Refer to the point customization section of the MM8000 Installation, Configuration and Commissioning manual (ICC) for more information about the **Camera Extensor** tab.

## 2.2.1 Video Drivers

The VNM can support the drivers required to handle the network communication with:

- TELSCAN video web server
- SISTORE video digital recorders

**Note:** SIMATRIX units do not need any Video driver.



Depending on the specific configuration required, add one or both drivers to your project. Proceed as follows:

1. Select the VNM node.
2. In the toolbar, click the icon corresponding to the driver you need (Fig 3):
  - A – Siemens TELSCAN
  - B – Siemens SISTORE

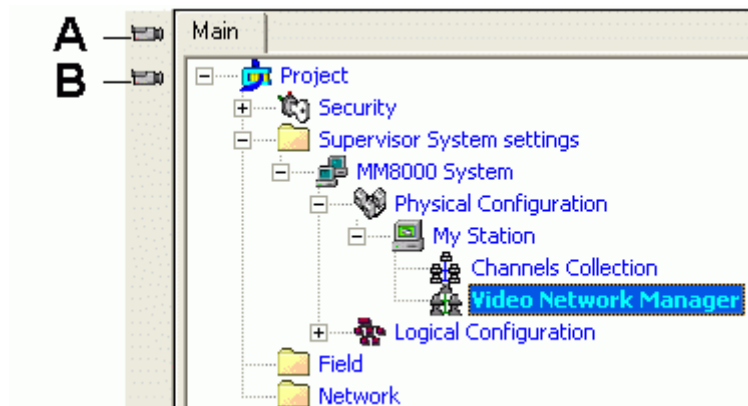


Fig 3 Video drivers


- A** Select this icon to add the TELSCAN driver  
**B** Select this icon to add the SISTORE driver

In small system, the Video Driver is installed on the MM8000 server. Large systems may include FEP stations with additional Video Drivers that can distribute the traffic load.




In general, each driver can support video several video connections (at least 40). Please refer to the MM8000 datasheet and release notes for getting the most recent recommendations and limits concerning the driver load for each video device.

## 2.3 CCTV components

If the VNM is not present, the Video Folder  on the left hand side includes only the following two icons:

- SIMATRIX switching crossbar
- Burle

If the VNM is present, the Video Folder  on the left hand side includes also an additional set of icons, corresponding to the following CCTV components:

- Video Cameras
- Video Monitors
- TELSCAN
- IP Cameras
- SISTORE AX, MX, MX Pro, CX/SX Digital Video Recorders (DVR),
- SIMATRIX
- Light-Integrated Devices

The following Fig 4 illustrates the menu options and the corresponding CCTV components.

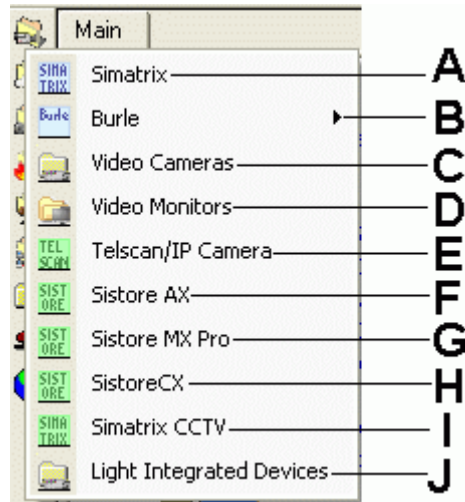


Fig 4 CCTV components menu

- A Select this icon to add a SIMATRIX switching crossbar
- B Select this icon to open a sub-menu and add a Burle switcher
- C Select this icon to add a Camera folder
- D Select this icon to add a Monitor folder
- E Select this icon to add a TELSCAN and IP Camera
- F Select this icon to add a SISTORE AX Digital Video Recorder (DVR)
- G Select this icon to add a SISTORE MX and MX Pro Digital Video Recorder (DVR)
- H Select this icon to add a SISTORE CX and SX Digital Video Recorder (DVR)
- I Select this icon to add a SIMATRIX CCTV
- J Select this icon to add a Light Integrated Devices folder



**Note:** The SIMATRIX could also be included in the configuration as a stand-alone sub-system, not included in the video network. This option is mainly available for backward compatibility.

### 2.3.1 Video Connections

In Composer, the CCTV units are configured to reproduce the video connections in the field. For example, as depicted in the Fig 5, a system may include cameras and monitors, a SISTORE AX DVR and a SIMATRIX crossbar. The cameras provide one or more video-out signals which are fed into the video-ins of SISTORE and SIMATRIX that, in turn, can supply a number of video-outs to the monitors.

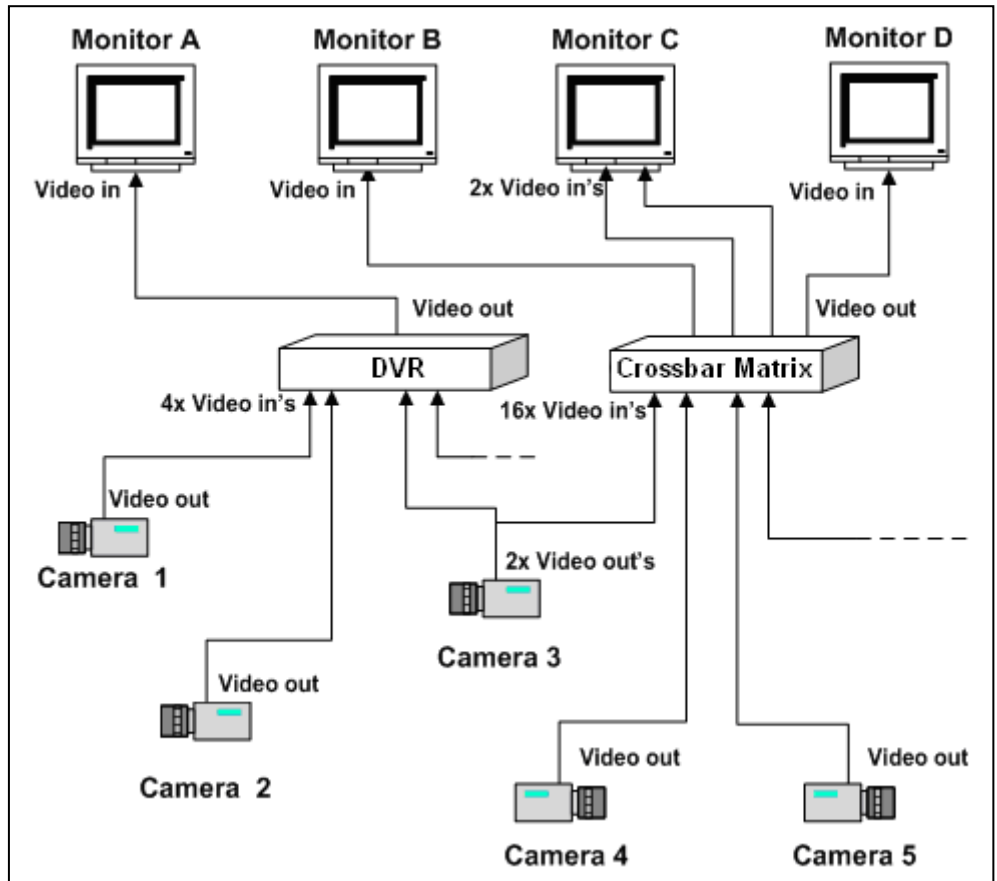


Fig 5 CCTV connections

### 2.3.2 Configuration checklist of CCTV network

Before starting the configuration, get in contact with the CCTV specialist and get the necessary information. Namely:

- Configuration schematic (block diagram or wiring diagram)
- Camera and Monitor types and names
- SIMATRIX and SISTORE models
- IP addresses and bus addresses

Then, in setting up the video network, follow the sequence illustrated by the checklist below.

- 1. Configure Cameras ..... p. 10
- 2. Configure Monitors ..... p. 13
- 3. Configure TELSCAN/IP cameras ..... p. 15
- 4. Configure SIMATRIX crossbars ..... p. 19
- 5. Configure SISTORE DVR units ..... p. 25

## 2.4 Camera configuration

---

### 2.4.1 Configuration checklist

---

Verify that you have satisfied the items needed in the first checklist before proceeding to the configuration procedure that follows.

#### ITEMS NEEDED FOR CONFIGURATION

- The number, names, and type of cameras: fixed, Dome, or PTZ.
- The application type in relation to the video recording: Manual or Automatic.  
If the camera is used for motion detection applications or is somehow not meant for the direct control of the operators, set Automatic mode.
- The cameras connection to SIMATRIX, SISTORE, and TELSCAN.
- Plug-ins needed:
  - Plug-in #352801, which must be installed before you can configure your system.

### 2.4.2 Configuration procedure



---

The following are the configuration procedures for the video cameras.

#### Adding the Video Network Manager

1. Open the Composer project.
2. If not already done, add the **Video Network Manager** (→ 2.2 at p.5).

#### Adding the folder for cameras

1. In the left-hand bar, select the **Video** folder icon 
2. In the menu that appears, select the **Video Camera** folder icon  to add a folder (→ Fig 4 at p.8).

#### Adding a video camera

1. Select the Video Cameras folder.
2. In the left-hand bar (Fig 6), select the type:
  - Fixed camera
  - PTZ camera
  - Dome camera

Also, in the same menu you can add additional folders that let you better organise the camera units according to type, location, etc.

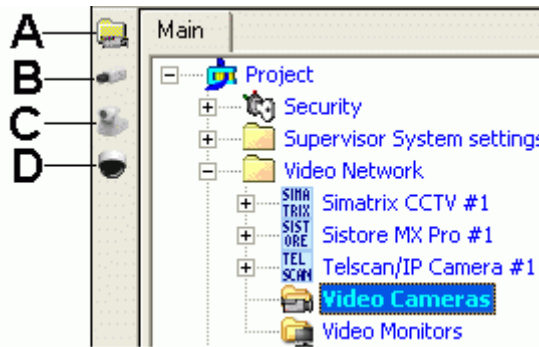


Fig 6 Adding video cameras

- A Select this icon to add an additional camera folder
- B Select this icon to add a fixed camera
- C Select this icon to add a PTZ camera
- D Select this icon to add a Dome camera

### Setting camera options

1. Select the camera node.
2. Select the **Node** tab.

**Note:** Here you can customise the camera name (**Description** field).

3. Set the camera options that are illustrated in Fig 7

For MM8000 (this step is not required for MK8000), you can select:

- **Manual Recording (Default)** or **Auto Recording**. If set in automatic mode, no manual control on video recording is available for the operator. Set this option according to the needs of the security application.
- **Motion and Sabotage Detection** (available if supported by the DVR unit).
- **ODR (Object detection and Removal)** (if supported by the DVR unit).
- **Control Settings: Pan, Tilt and Zoom** control, which can be enabled according to the camera characteristics (this is possible for dome and PTZ cameras, whereas it is not applicable to fixed cameras).

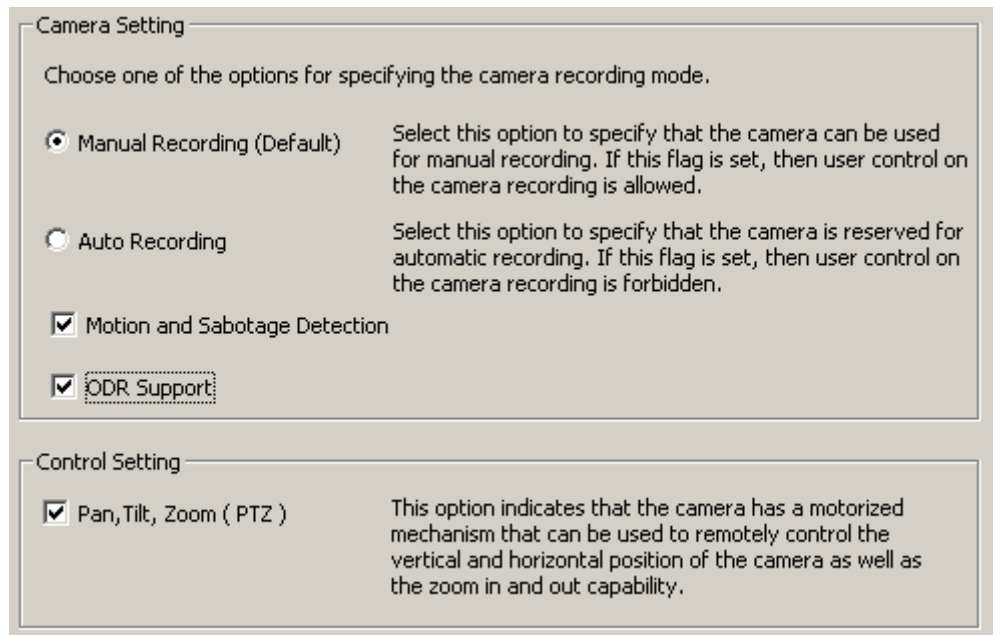


Fig 7 Camera options

### Connecting the cameras

1. Select and expand the camera node.

A Video-out node is automatically provided for the camera. Additional output nodes may be added to map video distribution devices or looping connectors that can route the video signal to multiple destinations.

2. If required, add additional video-out nodes.

Use the command icon on the left-hand bar (Fig 8).

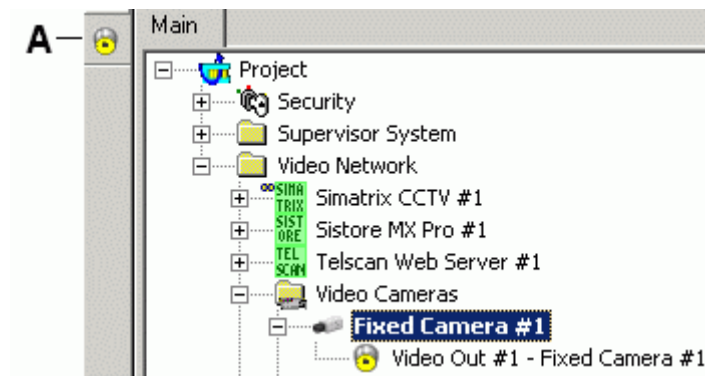


Fig 8 Additional camera outputs

- A Select this icon to add more video-out nodes

3. Select the **Video Out** node.
4. Drag and drop the **Video In** signal to the appropriate video-in node of the destination device. Examples are given below in the sections about TELSCAN, SIMATRIX, and SISTORE.

### 2.4.3 Cameras configuration tips

- Check which cameras are reserved for motion detection and set them in Automatic mode. The same applies to cameras reserved for system control only.
- Check which cameras have pre-trigger settings and adjust the time in the SISTORE tool.
- Siemens **IP cameras** can be configured in two ways:
  - Connected to SISTORE MX and configured with an input number greater than 64.
  - Networked but without video recording. In this case, they can be configured as single-channel TELSCAN.

## 2.5 Monitor configuration

### 2.5.1 Configuration checklist

Verify that you have satisfied the items needed in the first checklist before proceeding to the configuration procedure that follows.

#### ITEMS NEEDED FOR CONFIGURATION

- The number and type of monitors: Monochrome or colour
- The connection to SIMATRIX and SISTORE units
- Plug-ins needed:
  - Plug-in #352901, which must be installed before you can configure your system



### 2.5.2 Configuration procedure

The following are the configuration procedures for the video monitors.

#### Adding the Video Network Manager

1. Open the Composer project.
2. If not already done, add the **Video Network Manager** (→ 2.2 at p.5).

#### Adding the folder for monitors

1. In the left-hand bar, select the **Video** folder icon 
2. In the menu that appears, select the **Video Monitor** folder icon  to add a folder  
(→ Fig 4 at p.8).

#### Adding a monitor

1. Select the Video Monitors folder.
2. In the left-hand bar (Fig 9), select the type: **Monochrome** or **Colour Monitor**.  
Also, in the same menu, you can add additional folders that let you better organise the monitor according to type, location, etc.

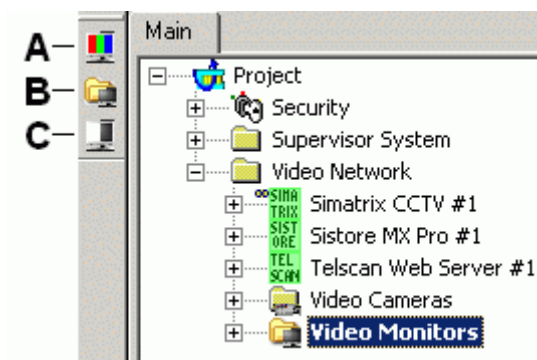


Fig 9 Adding monitors

- A** Select this icon to add a colour monitor
- B** Select this icon to add an additional folder
- C** Select this icon to add a monochrome monitor

### Connecting the monitor

1. Select and expand the monitor node.

A Video-in node is automatically provided for the monitor. Additional input nodes may be added in case of video signal received from multiple sources.

**Note:** In the Node tab, you can customise the monitor name (Description field).

2. If required, add additional video-out nodes.
3. Select the appropriate video-out node of the source unit.

Examples are given below in the sections about TELSCAN, SIMATRIX, and SISTORE.

4. Drag and drop the 'video out' signal to the 'video-in' node of the monitor.



## 2.6 TELSCAN/IP Cameras configuration

---

The Siemens TELSCAN is a video web server capable of connecting up to 4 video cameras, acquiring the video images, and transferring them over an IP network to the networked hosts.

IP camera supporting the TELSCAN protocol can also be individually connected to the DMS8000 systems over the LAN.

### 2.6.1 Configuration checklist

---

Verify that you have satisfied the items needed in the first checklist before proceeding to the configuration procedure that follows.

#### ITEMS NEEDED FOR CONFIGURATION

- The number of TELSCAN/IP Camera units
- The TELSCAN/IP Camera configuration settings:
  - IP address
  - Diagnostic settings: Ping frequency and Number of retries
- The video camera connections on TELSCAN
- Plug-ins needed:
  - Plug-in #251801, which must be installed before you can configure your system

### 2.6.2 Configuration procedure

---

The following are the configuration procedures for a TELSCAN/IP Camera.




#### Adding the Video Network Manager

1. Open the Composer project.
2. If not already done, add the **Video Network Manager** (→ 2.2 at p.5).  
and the **TELSKAN** driver:  
→ see 2.2.1 at p.6.

#### Adding a folder for the TELSCAN/IP Cameras.

- Optionally, create a folder for the TELSCAN/IP Cameras.

#### Adding the TELSCAN or /IP Camera node

1. Select the new folder.
2. In the left-hand bar, select the Video folder icon 
3. In the menu that appears, select the **TELSKAN icon**  to add a TELSCAN or the **TELSKAN IP Camera icon**  to add a video camera  
→ see Fig 4 at p.8.

#### Configuring the TELSCAN protocol settings

1. Select new node and click the **Node** tab.  
**Note:** By default, the node is named “TELSKAN #nn” or “TELSKAN/IP Camera #nn”. In the **Node** tab, you can customise the **Description** text.
2. In the **Telscan Setting** section, enter the following fields (Fig 10):

- **IP address**, which should match the value set in the TELSCAN (see TELSCAN documentation).  
**Note:** The button **Set Default Value** can be used to reset any change in the IP address field and go back to the factory setting.
  - Fault diagnostic fields: **Ping frequency** (default 10 sec) and **Retry times** (default 3 times).
  - **User Name** and **Password** as required to access the IP device (refer to the device's local configuration).
3. For MM8000 (this step is not required for MK8000), once the correct IP address is set, press the button **Send HTML files**.
- This results in a specialised HTML page being downloaded into the TELSCAN via FTP (File Transfer Protocol) service. The page is required for the interface to operate properly with the TELSCAN.




---

Failing in loading this page at least once causes defective displaying of the video camera pages.

---


Children	Links	Node	Configuration	Points Extensor	Event and OP Extensor	Camera Extensor
<p>– Descriptions</p> <p>Description: <input type="text" value="Telscan/IP Camera #1"/></p> <p>Technical Text: Telscan/IP Camera</p>						
<p>Security</p> <p> <input checked="" type="checkbox"/> Profile Inherit      Profile Id: <input type="text" value="1 - Default Profile"/></p>						
<p>Telscan Setting</p> <p>IP address : <input type="text" value="192 . 168 . 100 . 100"/></p> <p>Ping frequency (sec.): <input type="text" value="10"/>      Retry times: <input type="text" value="3"/></p> <p>User Name : <input type="text" value="config"/></p> <p>Password : <input type="text" value="*****"/></p> <p><input type="button" value="Send HTML File"/>      <input type="button" value="Set Default Value"/></p>						

Fig 10 TELSCAN settings

### Connecting the TELSCAN/IP Camera to Video Driver

1. Select the TELSCAN/IP camera node.
2. Select the TELSCAN Video Driver (see 2.2.1 at p.6).
3. Drag and drop the TELSCAN/IP camera to the driver (Fig 11).

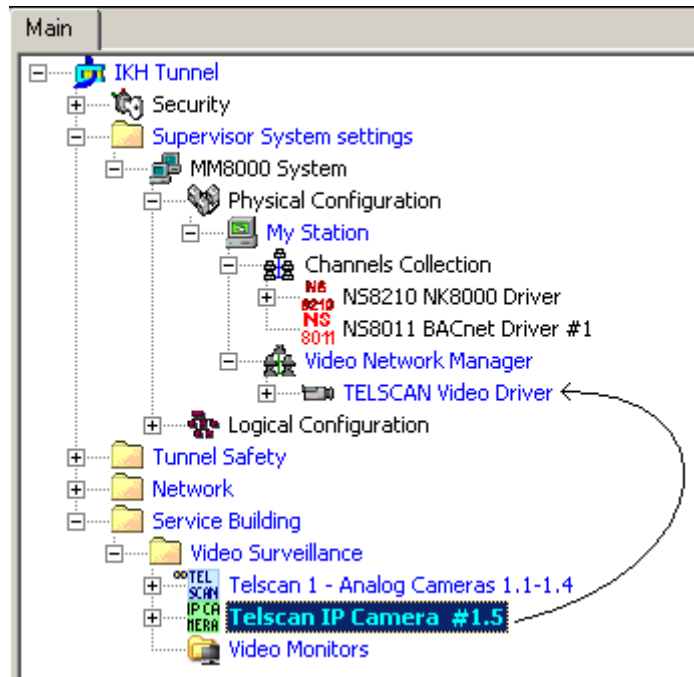


Fig 11 Connecting a Telscan IP Camera to the video driver

### Connecting the video cameras to TELSCAN

1. Select and expand the TELSCAN node.
2. Select and expand the camera node.
3. Select the video-out node of the camera.
4. Drag and drop the **Video Out** signal to a TELSCAN **Video In** node (Fig 12).

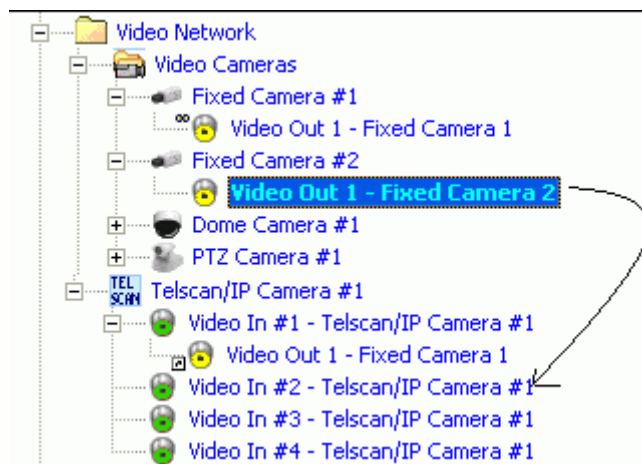


Fig 12 Connecting cameras to TELSCAN

## 2.6.3 TELSCAN configuration tips

- Check that TELSCAN firmware version is V2.0 or later.  
Note that firmware update is possible with the support of the CCTV Hotline.
- Do not forget to transfer to TELSCAN the customisation file from the setting page in Composer (see p. 16).
- Video applications recommended for TELSCAN:
  - MozillaControl15 ActiveX (recommended for better performance and **mandatory for Siemens IP cameras**).

**Limitation**

- MM8000 and MK8000 do not support the TELSCAN connection from a SIMATRIX video out: each camera has to be wired directly to the TELSCAN.
- The IP camera directly connected to the DMS8000 are fixed (no PTZ) and must be equipped with one of the following communication components: CCIS 1337-LP (cameras), CFVA-IP or CVVA-IP (domes).

## 2.7 SIMATRIX configuration

---

The SIMATRIX is a CCTV crossbar, capable of connecting CCTV cameras and video monitor for local and distributed video surveillance systems. It also provides support for security alarm inputs, and camera fault detection.

Depending on the hardware configuration – specifically the models 16-4, 64-8, SYS, and NEO - the matrix can connect 16, 64, 256, or 224 cameras, and 4, 8, 64, or 32 monitors, respectively. The connection to host is based on a RS232 serial line, and on the CDDL/CDSF protocol.



---

**Note:** CDDL/CDSF protocol is an option available on specific SIMATRIX EPROMs.

---

The alarm states in SIMATRIX can be triggered by digital inputs on hardware contacts, or via alarm messages from DMS8000 host. The SIMATRIX foresees up to three types of alarm modes, and they are different depending on the way the alarm reset is handled:

- Manual alarms: Reset action is required from the operator.
- Automatic alarms: Reset action is not required.
- Stack alarms: Alarms are associated to cameras and “stacked” on the monitors. They get reset when the corresponding monitor is switched to another camera.

The physical and logical configuration for a SIMATRIX is first defined for the hardware unit set-up. In the Composer environment, the configuration structure must be entered again, and it must perfectly match what was physically and logically defined in the SIMATRIX set-up.

### **SIMATRIX configuration**

The configuration of the SIMATRIX is possible both as a Stand-alone subsystem and as a part of the Video network.

In comparison with the Stand-alone solution, the Video network configuration presents the same approach for defining the alarm inputs and for connecting the SIMATRIX to the CDI-Net or NK8000 communication network.

Instead, some differences concern:

- The definition of cameras: in the Video network, cameras are separated objects that should be linked to the SIMATRIX video-in points.
- The definition of monitors: in the Video network, monitors are also separated objects and should be linked to the SIMATRIX video-out points.
- The import of texts from existing LMSmodular database, which is no longer available when the SIMATRIX is a component of the Video network.



---

The configuration of the SIMATRIX as stand-alone subsystem is not recommended for MM8000 systems, and available for backward compatibility and for other DMS8000 products (e.g. MK8000 OPC server).

---

## 2.7.1 Configuration checklist

---

Verify that you have satisfied the items needed in the first checklist before proceeding to the configuration procedure that follows.

### ITEMS NEEDED FOR CONFIGURATION

- The SIMATRIX model: 16-4, 64.8, SYS, or NEO.
- The SIMATRIX parameter settings, including complete information about the camera inputs, monitor outputs, and alarm points (number and type).  
If available, the LMS database including the SIMATRIX unit may be imported in the stand-alone model (but not if the Video network is used).
- The local address (0, 1, etc.)
- The connection to the DMS: CDI-Net or NK8000  
**Note:** CDI-Net and NK8000 require a specific line available on the gateway
- Plug-ins needed:
  - Plug-in #353301, which must be installed before you can configure your system

## 2.7.2 Configuration procedure

---

The following are the configuration procedures for a SIMATRIX unit:




### Adding the Video Network Manager

1. Open the Composer project.
2. If not already done, add the **Video Network Manager** (→ 2.2 at p.5).  
(you may skip this point if the SIMATRIX is the only video subsystems and you do not intend using the video network.)

### Adding the folder for the SIMATRIX system

- Optionally, create a folder for the SIMATRIX unit.

### Adding the SIMATRIX node

1. Select the new folder.
2. In the left-hand bar, select the Video folder icon 
3. In the menu that appears, select the **SIMATRIX “green”** icon  to add a SIMATRIX CCTV in a Video network:  
→ See Fig 4 at p.8;  
-- OR --  
Click the **SIMATRIX “light blue”** icon  to select the stand-alone subsystem.

### Setting the SIMATRIX Local Address and Type

1. Select the SIMATRIX node.
2. In the **Node** tab form (Fig 13), set the **Local Address**.  
**Note:** The address value should range from 0 to 15 and it should match what is set in the configuration of the SIMATRIX unit.
3. Select the **Simatrix Type** (for SIMATRIX CCTV can be one of the following):
  - SIMATRIX 16-4

- SIMATRIX 64-8
- SIMATRIX SYS

**Note:** Be aware that it may not be possible to later modify the type. More precisely, the only modification allowed is to select a bigger model but not to change to a smaller one. For example, you can change from the '16-4' (default) toward a '64-8' but not vice versa. If you want to change to a smaller type, delete the unit and create a new one (note that this results in the existing connections being lost).

4. Set the number of video-in and video-out points.

If you selected the type **64-8** or **SYS**, then you can specify the exact number of inputs and outputs needed.

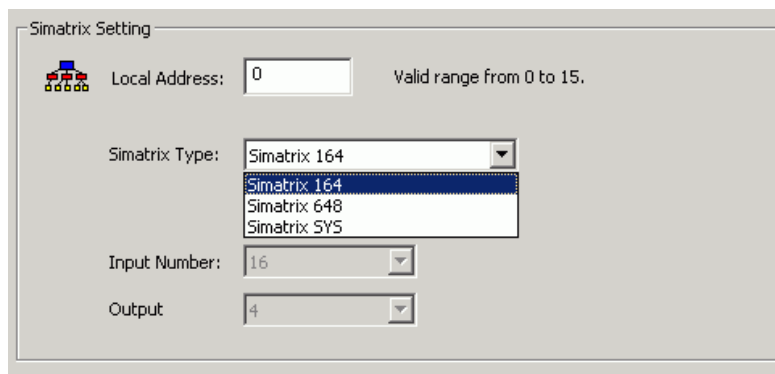


Fig 13 Selecting SIMATRIX type



If you are installing a **SIMATRIX NEO**, just select one the three models according to the number of connections required.

### Importing the LMSmodular configuration (Stand-alone model only)

1. Select the SIMATRIX node.
2. Select **Tools→Import** in the Composer menu to start SIMATRIX import.  
*After a confirmation request, the software presents a browsing window to search for the files to import.*
3. Using standard Windows controls, do the following:
  - a. Look for LMS files, selecting the extension DBF in the browsing window.
  - b. Locate the DB\_SUB.DBF file.
  - c. Select the file and click **Open**.
  - d. When prompted, select the language of the DBF file.
  - e. If more than one SIMATRIX unit is present in the metafile, the software presents a list. Select the one you want to import and click **OK**.  
*In a few moments, the SIMATRIX structure is imported, and the node is represented in the Composer tree.*
4. Skip next sections and go directly to the communication network link (p.23).

### Adding the alarm points

Add to the SIMATRIX the alarm points according to the actual configuration.

1. Select the SIMATRIX node.
2. Select the Alarm Input folder.
3. Add the Alarm points.

**Note:** in SIMATRIX, there are three types of alarm points, depending on the type of alarm reset that the unit expects. They include:

- **Stack alarms**, which are associated to the CCTV monitors with a shifting technique (the alarmed cameras are shown on the monitors according to a programmed priority), and then reset by switching the monitor to another camera. Only the “top of stack” alarm can be reset;
- **Automatic** reset when the alarm contact is back to normal;
- **Manual** reset from DMS operators.



**In the SIMATRIX configuration (and consequently in Composer), you can use only one of the three alarm types.**

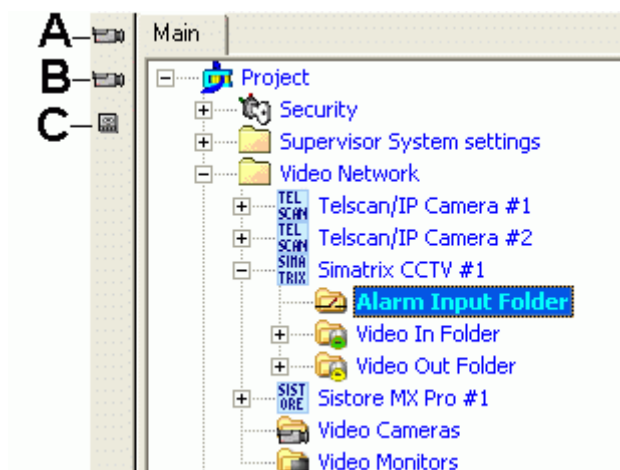


Fig 14 How to add SIMATRIX alarm points

- A Click this icon to add a stack alarm
- B Click this icon to add an automatic reset alarm
- C Click this icon to add a manual reset alarm

### Connecting the cameras (Video network model only)

1. Select and expand the SIMATRIX node.
2. Select and expand the SIMATRIX Video-in folder.
3. Select and expand the Video Camera folder.
4. Select the video-out node of the camera.
5. Drag and drop the **Video Out** signal to the SIMATRIX **Video In** node (Fig 15).

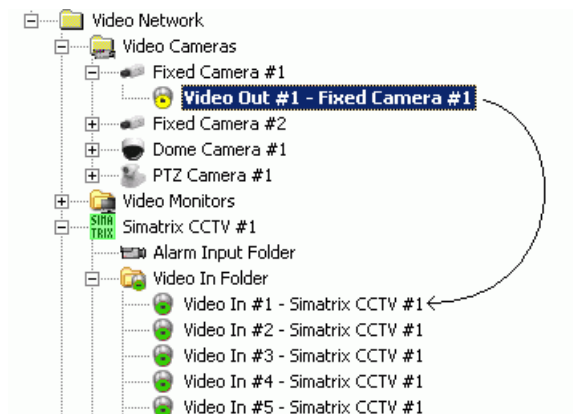


Fig 15 Connecting cameras to SIMATRIX



### Connecting the monitors (Video network model only)

1. Select and expand the SIMATRIX node.
2. Select and expand the SIMATRIX **Video Out** folder.
3. Select and expand the Video Monitor folder.
4. Select the video-out node of the SIMATRIX.
5. Drag and drop the **Video Out** signal to the monitor **Video In** node (Fig 16).

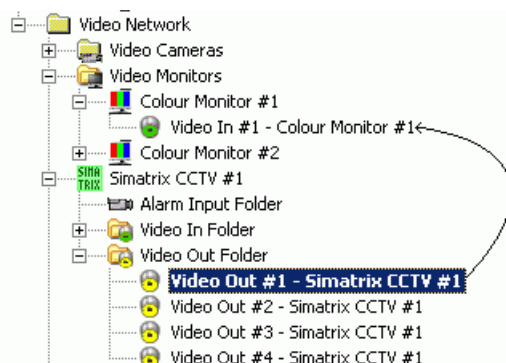


Fig 16 Connecting SIMATRIX to monitors

### Linking the SIMATRIX to the Communication network

Link the SIMATRIX node to the CDI-Net or NK8000.

1. Expand the network folders until you reach the node that represents the network that is physically connected to the SIMATRIX (CDI-Net or NK8000).
2. Select the SIMATRIX node.
3. Drag and drop the SIMATRIX node to the network port node (see Fig 17).

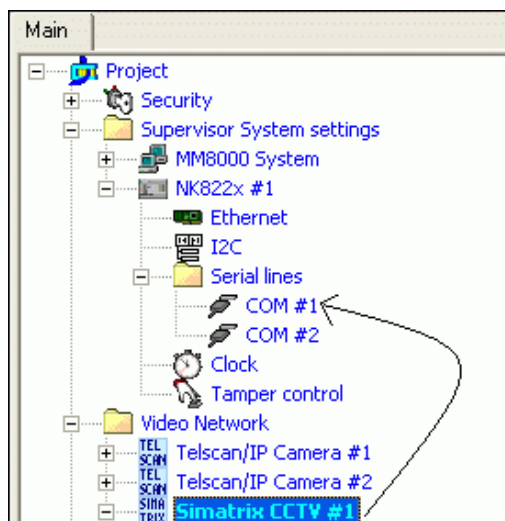


Fig 17 Linking SIMATRIX to NK8223

## 2.7.3 SIMATRIX configuration tips

- Use only one of the alarm modes (manual, automatic or stack alarm).
- SIMATRIX is not connected over the LAN. It connects via the serial line, typically to an NK822x unit.
- Normally, no special SIMATRIX EPROM needs to be ordered for new units. In case of installed matrices, check with CCTV support the required upgrading steps.
- In the SIMATRIX tool, you need to set the host protocol to CDDL/CDSF. The COM physical port settings should then be set to the following values:

- 2400 baud
- 8N1 (8 Data bits, No parity, 1 Stop bit)



---

The SIMATRIX software provides two template data files, LMS\_1 (16) or LMS\_6 (64) depending on the SIMATRIX model, which already include the configuration options required for the CDDL/CDSF communication. Please refer to these examples.

---

### **Limitations**

- The SIMATRIX sends out an alarm input *Quiet* status upon a DMS8000 host restart (status request) and after switching the matrix OFF and then ON again. This results in all alarms being cleared in the DMS8000 host but not on the SIMATRIX (alarm may still be present).
- Currently, PTZ commands are not supported.

## 2.8 SISTORE DVR configuration

---

The Siemens SISTORE is a family of Digital Video Recorders capable of acquiring the video signals from a number of input cameras, showing the images on a local monitor, and storing them in digital form on a local hard disk for later analysis. Also, direct alarm inputs and outputs can be managed.

The host connection is based on a TCP/IP connection on a LAN network.

The following SISTORE models are currently integrated in the DMS8000 Video Network:

- SISTORE AX
- SISTORE CX
- SISTORE MX (including NVR)
- SISTORE MX Pro
- SISTORE SX

Although the models feature different characteristics, their configuration in Composer is quite similar and it is discussed in this section for all of them.

### 2.8.1 Configuration Checklist

---

Verify that you have satisfied the items needed in the first checklist before proceeding to the configuration procedure that follows.

#### ITEMS NEEDED FOR CONFIGURATION

- The SISTORE software tools installed and operating properly with the DVR units. E.g.: RAS software (AX), RemoteView software (MX/MX Pro), SISTORE Config program (SX/CX), etc.
- The SISTORE model and line capacity
- The allocation of SISTORE units on Server/FEP stations and related video drivers
- The number of video inputs and outputs
- The SISTORE parameter settings, including:
  - IP address and TCP port
  - Username and password for the SISTORE configuration
  - Username and password for live-setting administration
  - Username and password for playback-setting administration
- The camera and monitor connections
- The alarm input logic (NO: Normally Open or NC: Normally Closed)
- The alarm output pulse duration
- Plug-ins needed:
  - Plug-in #251901, which must be installed before you can configure your system

## 2.8.2 Configuration procedure

---

The following are the configuration procedures for a SISTORE unit:



### Adding the Video Network Manager

1. Open the Composer project.
2. If not already done, add the **Video Network Manager** (→ 2.2 at p.5) and the SISTORE driver:  
→ see 2.2.1 at p.6.

### Adding the folder for the SISTORE system

- Optionally, create a folder for the SISTORE unit.

### Adding the SISTORE node

1. Select the new folder.
2. In the left-hand bar, select the **Video** folder icon .
3. In the menu that appears, select the **SISTORE** icon  to add a SISTORE  
→ see Fig 4 at p.8.

### Configuring the SISTORE settings

1. Select new SISTORE node and click the **Node** tab.  
**Note:** By default, the node will be named 'SISTORE xx #nn'. In the **Node** tab, you can customise the **Description** text.
2. Fill in the following fields (see Fig 18 and Fig 19):
  - **Type**, to be selected in the drop down list according to the actual number of video connections.
  - **IP address** of the SISTORE unit, which should match the value as set in the SISTORE device. You can find the address in the following ways:
    - For AX, run the SISTORE AX RAS software and start the 'Local Setup' (the button next to the "SISTORE AX Admin" title of the main window), then click the Remote Site tab and select the AX unit in the list (the AX unit has to be first created; here we assume that it has been already configured in the RAS program).
    - For MX / MX (NVR) / MX Pro, start the SISTORE MX / MX Pro program, and, in the program menu, select 'Administration → Configuration → Network'.
    - For SX / CX, start the 'SISTORE SX/CX Config' program, select the SISTORE unit in the list and just read the IP address in the data window on the right.
  - **TCP port** (do not change this value unless the default values are also changed in the CCTV system).
  - **Username** (usually "IVM\_SERVER") and **password** for the configuration of SISTORE (do not change this value unless you really know what you are doing).**Note:** the button 'Set Default Value' can be used to reset any change in the fields above and go back to the factory setting.

**3** Additionally, set the **Admin** (or **Administrator** for MX/MX-Pro) account **password**, and **TCP port** for:

- Displaying live video images ('Display').
- Retrieving archived video images ('Playback').

**Note:** these usernames and passwords must match the corresponding account configuration set in the SISTORE software in order to enable M8000 to access the video functions over the network. You can find the usernames (password will not be shown and must be asked to the CCTV manager) in the following ways:

- AX: the required user account (the same can be used for both 'Display' and Playback') is the one used by the SISTORE AX RAS software: 'Local Setup' (the first button next to the SISTORE AX title of the main window) in the Remote Site entry (locate and select the AX unit in the list) for the Login Setup (the configuration form).
- MX / MX (NVR) / MX Pro: the required user account can be found in the 'Administration → Configuration → User Management' of the SISTORE MX Pro software.
- SX / CX: the required user account can be found in the user 'Administration Client' program of the SISTORE SX/CX.



Failing to set the same usernames and passwords results in errors being reported by MM8000 when video is requested in event treatment and plant browser operations.

SISTORE Setting

Type :

IP address :

TCP/IP port :

User name :

Password :

SISTORE Live Settings

User :  Password :  Port :

SISTORE Play Back Settings

User :  Password :  Port :

SISTORE AX model

SISTORE AX IP address: read it in the 'Local Setup / Remote Site' page of the RAS software

SISTORE AX Admin user: find it in the 'Local Setup / Remote Site' page of the RAS soft-

Fig 18 SISTORE AX settings and main parameters

SISTORE MX / MX (NVR) / MXPro model

SISTORE IP address: read it in the 'Administration → Configuration → Network' page of the SISTORE MX / MX Pro software

SISTORE user(s): read it in the 'Administration → Configuration → User Management' page of the SISTORE MX / MX Pro software

**Note:** Check that user(s) is/are enabled to Display and Playback function,

Fig 19 SISTORE MX / MX Pro settings and main parameters

SISTORE SX / CX model

SISTORE SX / CX IP address: read it in the 'SISTORE Config' page

SISTORE SX / CX Admin user: find it in the user 'Administration'

Fig 20 SISTORE SX / CX settings and main parameters

### Creating video inputs and connecting the cameras

1. Select and expand the SISTORE node.
2. Select and expand the SISTORE **Video In** folder.
3. Add the required video inputs: note that input number can be customised.
4. Select and expand the **Video Cameras** folder.
5. Select the video-out node of the camera.
6. Drag and drop the **Video Out** signal to the SISTORE **Video In** node (Fig 21).

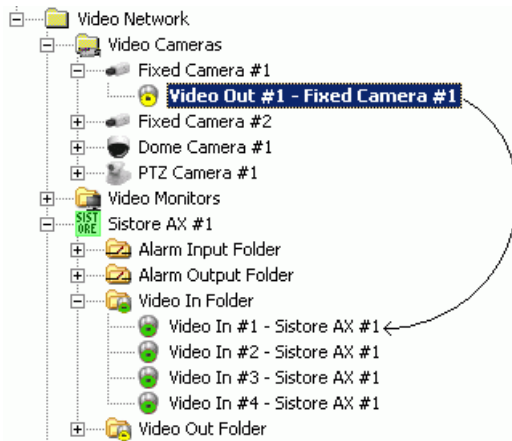


Fig 21 Connecting cameras to SISTORE

### Creating video outputs and connecting the monitors

1. Select and expand the SISTORE node.
2. Select and expand the SISTORE **Video Out** folder.
3. Add the required video outputs: note that output number can be customised.
4. Select and expand the **Video Monitors** folder.
5. Select the video-out node of the SISTORE.
6. Drag and drop the **Video Out** signal to the monitor **Video In** node (Fig 22).

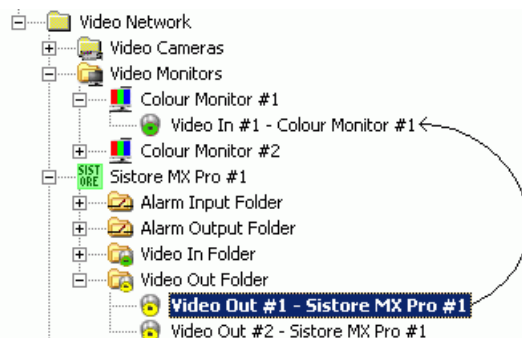


Fig 22 Connecting SISTORE to monitors

### Configuring alarm inputs

1. Select and expand the SISTORE node.
2. Select and expand the **Alarm Input** folder.
3. Add the required alarm inputs: note that input number can be customised.
4. Select the **Alarm Input** node and its **Node** tab.
5. Set NO or NC logic (Fig 23).

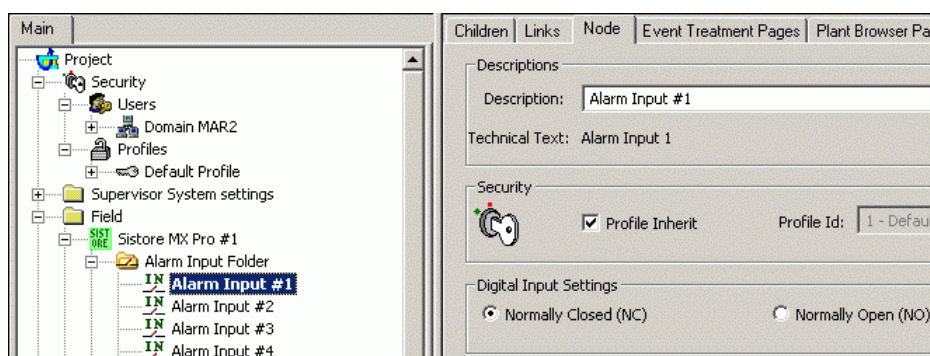


Fig 23 Connecting SISTORE to monitors

## Configuring alarm outputs

1. Select and expand the SISTORE node.
2. Select and expand the **Alarm Output** folder.
3. Add the required alarm outputs: note that output number can be customised.
4. Select the **Alarm Output** node and its **Node** tab.
5. Set the **Pulse duration in tenth of sec** (Fig 24).

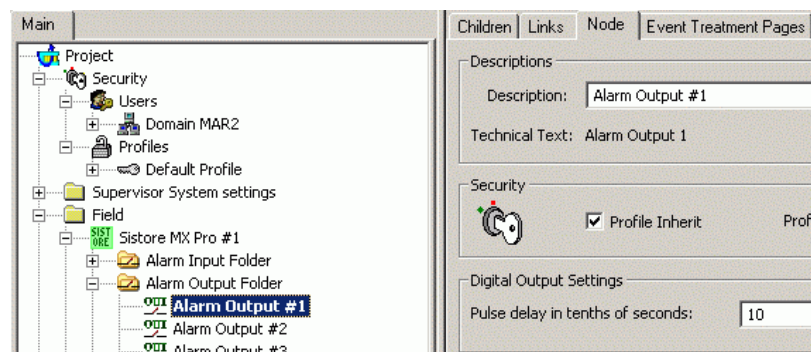


Fig 24 Configuring SISTORE alarm outputs

## 2.8.3 SISTORE configuration tips

### SISTORE AX

- Check MM8000 and SISTORE AX Release Notes about known problems and specific compatibility issues.
- Be sure that the Usernames and Passwords, IP address and Ports are set in Composer as in the SISTORE AX RAS software (Local Setup → Remote Site).
- Do not use the SISTORE AX RAS application on the same PC as MM8000. After using the RAS viewer, the MM8000 cannot display live video pictures any more. To fix this, you need to launch the Init\_CCTV\_ENV.exe in the MM8000 Utility folder.
- Do not connect simultaneously with another PC via RAS Software to the SISTORE AX. When starting RAS, stop the MM8000 clients temporarily.
- Only one playback per station at the time is possible, even when quad-view is used.

### SISTORE MX / MX (NVR) / MX Pro

- Check MM8000 and SISTORE MX / MX Pro Release Notes about known problems and specific compatibility issues.
- On each client station with video functions, disable the Auto-disconnect option in the SISTORE MX RemoteView configuration (see Fig 25 below). Default setting is auto-disconnect time enabled after 5 min. and causes the live video in MM8000 to freeze when the time expires.



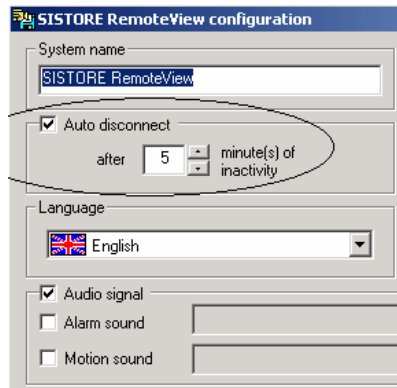


Fig 25 Auto-disconnect option in the SISTORE MX RemoteView configuration

- Be sure that the IP address and Ports are set in Composer as in the SISTORE MX program (Network tab)
- Be sure that the Usernames and Passwords are set in Composer as in the SISTORE MX program (User Management tab).
- Be sure that the pre- and post-trigger are correctly set in the SISTORE MX program (Ring Recording tab). Note that
  - The time settings should be greater or equal the ones used in the MM8000 Operating Procedures (see MM8000 ICC manual).
  - The Software Trigger flag should be checked for each camera involved in automatic event recording.
- In case of recorded video with a pre-trigger, note that the player does not directly show the pre-trigger time. For example, supposing you have recorded a video at time “t0” with pre-trigger set at “t0-pt”, the player initially starts at “t0” ignoring the preceding part. In order to show the images from the very beginning, you need to click the left (back) green arrow and reach “t0”, then manually enter a new starting time (earlier enough to get the previous images, up to “t0-pt”) in the search field. This procedure (see Fig 26) unlocks the pre-trigger sequence to be shown and searched.

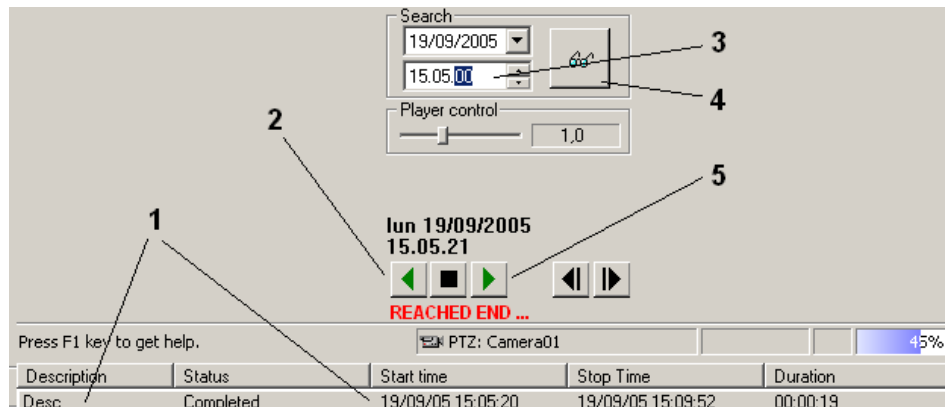


Fig 26 How to view pre-trigger images in the MX player

- 1 Double click on the recorded video
  - 2 Click the 'Back' button to reach the starting point (not including pre-trigger)
  - 3 Enter the new time, as earlier as necessary
  - 4 Click the 'Search' button
  - 5 Click 'Play' to show the images from the earlier starting point.
- PTZ commands are only available via separate control fields (no in-window control).
  - If you log-in locally on the SISTORE MX, the PTZ commands in MM8000 do not work any more.

## **SISTORE SX / CX**

- Check MM8000 and SISTORE SX / CX Release Notes about known problems and specific compatibility issues.

### **Special registry settings**

Note the registry-based settings available in the file folder:

**<installation folder>\Utilities\Reg\...**

- **EnableExternalRecording.reg**
- **DisableExternalRecording.reg**

These commands include or exclude the externally-commanded video recording (e.g. 24h recording) in the related DVR status event. If disabled, only the video recording commanded by MM8000 are reported as an event.

- ➔ For more information about the special registry scripts, refer to the MM8000 ICC manual (document no.A6V10062413).

## 2.9 Configuring a Philips/Burle CCTV switcher

---

DMS8000 products support the LTC8000 family of Philips/Burle CCTV switchers. The LTC8000 family includes various switching units ranging from 8 to 4096 camera inputs and from 2 to 512 monitor outputs. Alarms inputs (8 to 1024) are also supported for triggering alarm-handling switching procedures.

### 2.9.1 Configuration checklist

---

Verify that you have satisfied the items needed in the first checklist before proceeding to the configuration checklist that follows.

#### ITEMS NEEDED FOR CONFIGURATION

- The number and type of LTC8x00 units.
- The switcher parameter settings, which can be provided in two ways:
  - The LMSmodular databases DB\_PUL.DBF and DB\_SUB.DBF to import;
  - Complete information about the CCTV configuration, including cameras, monitors, and alarm inputs.
- The connection to the DMS (via NK8000).  
**Note:** The NK8000 requires a serial line available on the gateway.
- Plug-ins needed:  
Plug-in #352301, which must be installed before you can configure your system.

#### CONFIGURING A PHILIPS/BURLE CCTV SWITCHER

- 1. Add the folder(s) required to identify the location of the CCTV unit in the project structure tree ..... p. 34
- 2. Add the Philips/Burle CCTV switcher node to the new folder ..... p. 34
- 3a. Import the DMS7000 or LMS database, if available ..... p. 34  
-- Or --  
3b. Define the detailed configuration of the switcher, adding cameras, monitors, and alarm inputs ..... p. 35
- 4. Link the switcher to the assigned NK8000 port ..... p. 36
- 5. Repeat steps 1 to 4 for all the Philips/Burle CCTV switchers in the project



## 2.9.2 Configuration procedures

The following are the configuration procedures for the Philips/Burle switcher unit:

### Adding the folder for the Philips/Burle subsystems

1. Open the Composer project.
2. Create a folder for the CCTV components.  
*A new node appears in the Composer tree*

### Adding the Philips/Burle switcher node

1. Select the new folder.
2. In the left-hand bar, select the **Video** folder icon 
3. In the menu that appears, select the **Burle** icon  to add a switcher node.  
→ see Fig 4 at p.8.

You will have to select the exact model in the list (see Fig 27 below).

*A new node appears in the Composer tree*

**Note:** By default, the node will be named LTC8x00 #nn, reflecting the switcher model name. You can customise the Description text by clicking the text, typing a new name, and pressing **Enter**.

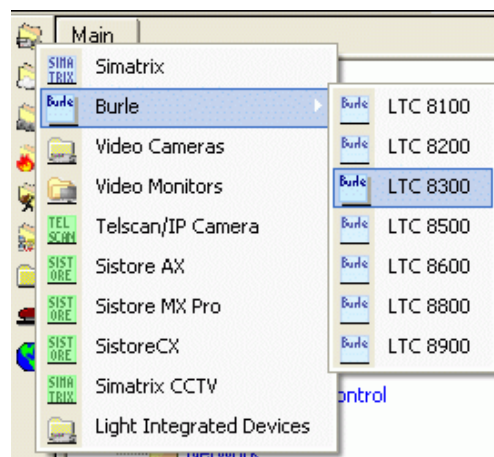


Fig 27 Selecting the Burle icon to add a CCTV switcher node

### Importing the LMSmodular configuration

1. Select the Philips/Burle switcher node.
2. Select **Tools**→**Import** in the Composer menu to start the import.  
*After a confirmation request, the software presents a browsing window to search for the files to import.*
3. Using standard Windows controls, do the following:
  - Look for LMS files, selecting the extension DBF in the browsing window.
  - Locate the DB\_SUB.DBF file.
  - Select the file and click **Open**.
  - When prompted, select the language of the DBF file.
  - If more than one Philips/Burle unit is present in the metafile, the software presents the complete list. Select the one you want to import and click **OK**.

*In a few moments, the CCTV structure is imported, and the node is represented in the Composer tree.*

### Defining the switcher detailed configuration

If no configuration can be imported, you will need to configure the switcher by hand to reflect the actual hardware configuration. The following list shows where different items are located in the physical and logical trees in Composer.

1. Select the switcher node.
2. Select the sub-nodes cameras and add the video camera nodes (→ see Fig 28).
3. Select the sub-nodes alarm inputs and add the alarm input nodes (→ see Fig 29).
4. Select the sub-nodes monitors and add the monitor nodes (→ see Fig 30).

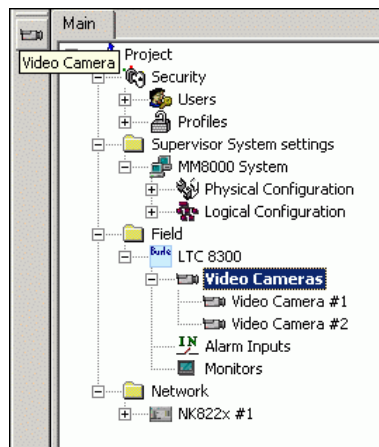


Fig 28 Adding cameras to Philips/Burle switcher

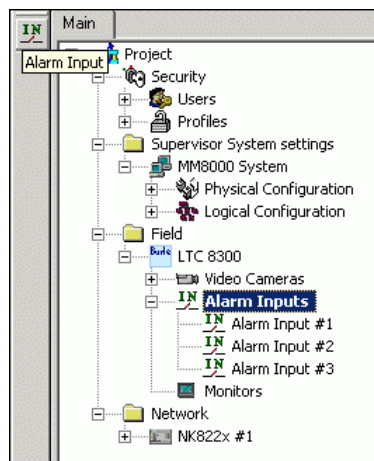


Fig 29 Adding alarm inputs to Philips/Burle switcher

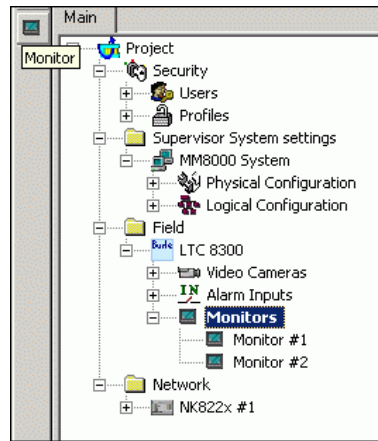


Fig 30 Adding monitors to Philips/Burle switcher

The new nodes will be named and numbered sequentially starting from 1. Should the actual CCTV configuration be different, you can change the default address in the **Node** tab (see Fig 31). We recommend changing the node name as well so that it will still correspond to the address.

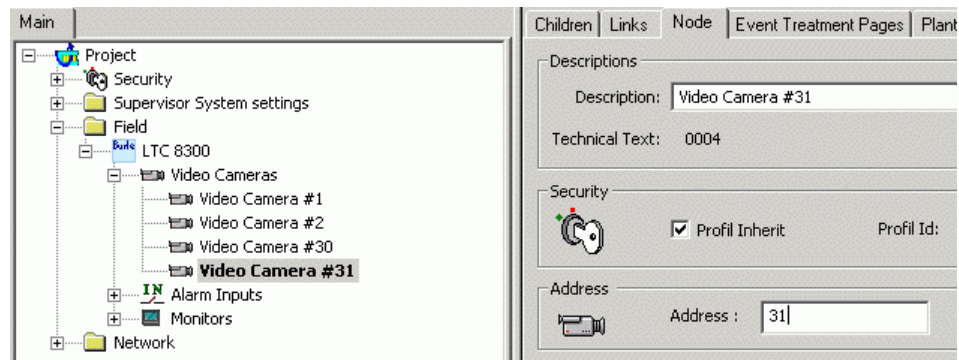




Fig 31 Changing address for cameras (alarm inputs, monitors)

### Linking the switcher to the communication network

Link the switcher node to the NK8000 port:

1. Expand the network folders until you reach the node that represents the network component that is physically connected to the switcher serial line (NK822x device).
2. Select the top node of the switcher subsystem.
3. Drag and drop the node to the network port devoted to Burle/Philips unit (see Fig 32).

**Note:** The valid link positions on NK8000 gateways are distributed along the NK822x lines. Composer helps you to recognise valid links by showing a shortcut

**Link icon**  instead of the circle **No-link icon** .

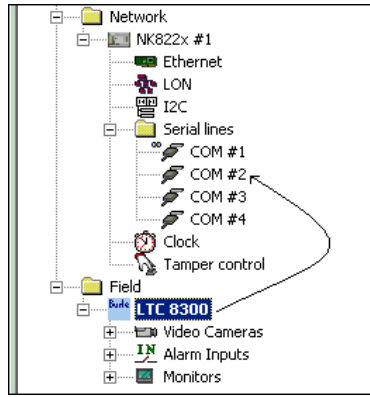


Fig 32 Linking Philips/Burle switcher to NK822x port

## 2.10 Configuring a Light-integration Device (External Viewer)

---

3<sup>rd</sup> party units, especially IP cameras, can be easily integrated in MM8000 systems for providing basic viewing functions. In fact, such devices can be supported with a Data Viewer in the MM8000 Page Browser. No event or history treatment is foreseen.

The viewer can be either locally installed software (EXE file) or WEB based (HTML URL).

### 2.10.1 Configuration checklist

---

Verify that you have satisfied the items needed in the first checklist before proceeding to the configuration checklist that follows.

#### ITEMS NEEDED FOR CONFIGURATION

- The number of devices and the corresponding type of viewer (Application or Web-based)
- In case of application viewer:
  - The application (to be installed on each client station) and the corresponding folder pathIn case of web-based viewer:
  - The URL address (www....)
- Plug-ins needed:  
Plug-in #358001, which must be installed before you can configure your system.

#### CONFIGURING A LIGHT-INTEGRATED DEVICE



- 1. Add the folder(s) required to identify the location of the 3<sup>rd</sup> party devices in the project structure tree ..... p. 39
- 2. Add the device node to the folder ..... p. 39
- 3. Configure the viewer ..... p. 40
- 4. Repeat steps 2 and 3 above for all the devices in the project



## 2.10.2 Configuration procedures

The following are the configuration procedures for the Light-integration Device:


### Adding the folder for the Light-integration Devices

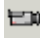
1. Open the Composer project.
2. Select or add the destination folder in the tree.
3. Select video menu icon 
4. In the menu that appears, select **Light Integrated Devices**   
*A new node appears in the Composer tree.*



You can only add one folder for the Light-integrated Devices

### Adding the device

1. Select the **Light Integrated Devices** folder.
2. If required, add more subfolders 
3. Add a new device, selecting either the unit with HTML-based viewer (Fig 33) or the one with installed application viewer (Fig 34).  
*A new node appears in the Composer tree.*

Note that the icon  is the same for both types; move the cursor of the mouse on the icons and use the tooltip text to identify the one you need.

4. Select the new node, press F2 (or click on it again), and then rename the device description appropriately.

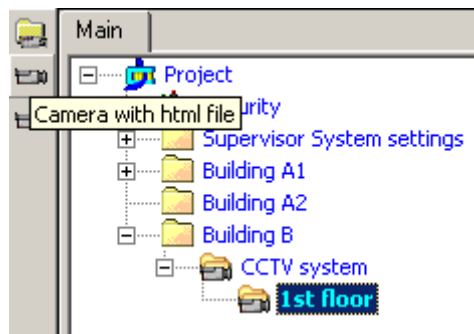


Fig 33 Selecting the icon for adding a device with a web-based viewer

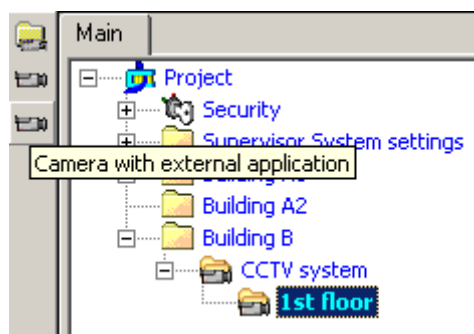


Fig 34 Selecting the icon for adding a device with an application viewer

## Configuring the viewer

1. Select the new device node and then the associated **Node** tab.
2. In case HTML-based viewer (Fig 35), enter the file path of the local HTML page (note that HTTP protocol is not supported)  
-- OR --  
in case of installed application, enter the Application path and, optionally, the related launch parameters (Fig 36).



Note that the viewer application should be installed on all the MM8000 client stations using the same installation folder.

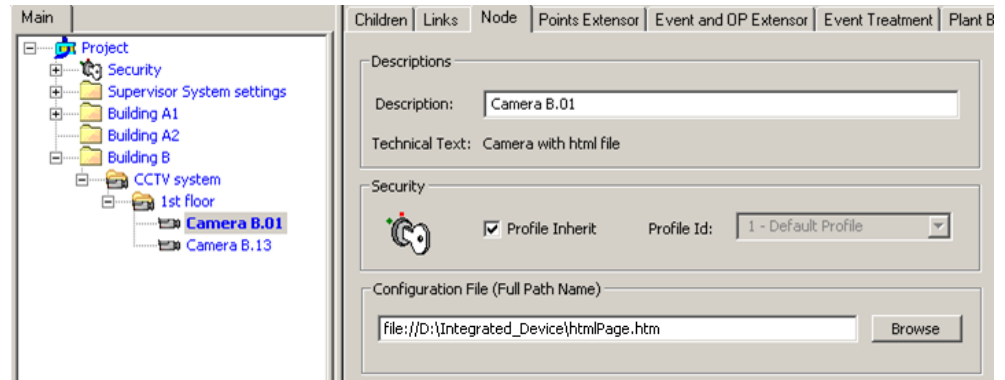


Fig 35 Configuring the web-based viewer

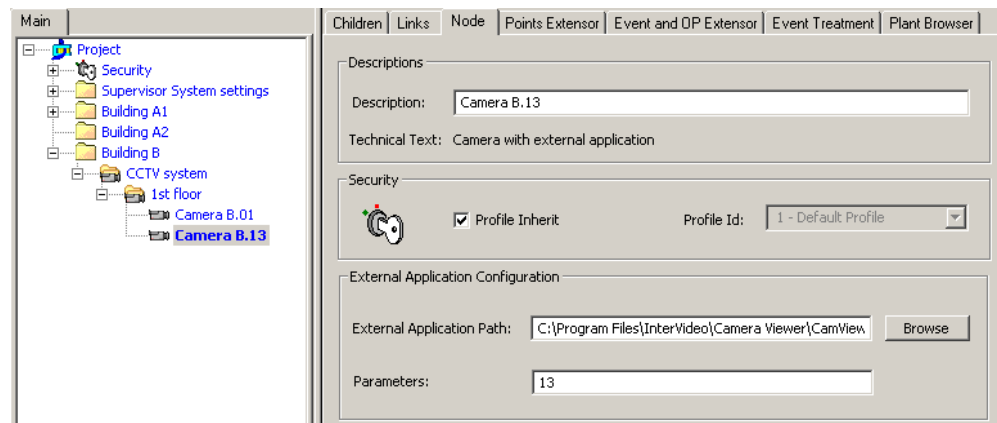


Fig 36 Configuring the application viewer



Siemens Switzerland Ltd  
Building Technologies Group  
International Headquarters  
Fire Safety & Security Products

Gubelstrasse 22  
CH-6301 Zug

Tel +41 41 724 24 24  
Fax +41 41 724 35 22

[www.sbt.siemens.com](http://www.sbt.siemens.com)