

## 5 Standard Toolbar

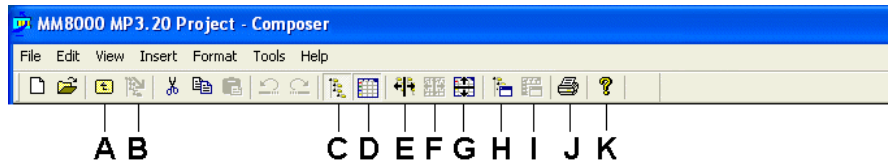











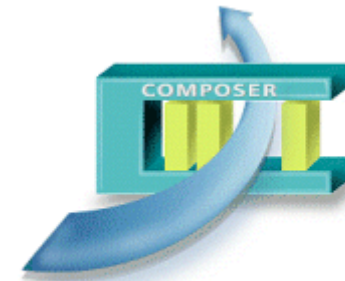


Fig. 3 Composer Standard toolbar

Item:	Select:	To:	Description:
A		Move up one node level in the tree	Select this icon to move up a level in the tree.
B		Expand the levels in the tree	Display a pre-selected number of levels in the tree (up to "All"). <b>Note:</b> To set the number of node levels to display, select Tools → Options.
C		Show/hide the view of the tree	Hide the tree and view only technical information (or data) for a selected node.
D		Show/hide the data view of a selected node	Hide the data and view only the tree.
E		Split the tree into two or more views (up to eight)	Display the tree in multiple views so you can simultaneously view different parts of your project. Use this function to drag and drop in large projects, or to focus on a specific part of the tree with the Zoom or Filter functions (see section 2).
F		Split the grid view	Display the grid in multiple views to simultaneously view different properties of a node.
G		Split the data view	Drag the tab bar down to separate the Children and Links tabs from the rest of the data. (See Fig. 1 in section 2 for example.)
H		Display the tree properties	Select this icon to display current tree properties, and to also choose how you want the tree to be displayed (Description, Technical text, or both). <b>Note:</b> The Technical text is the unique CSX number of the control units.
I		Display the grid properties	Select this icon to choose what you want to display on the grid.
J		Print a report detailing some or all of the project structure	Activate the report wizard to configure reports to print out selected nodes, levels, or the entire tree. (See also section 4.)
K		Display Help	See the Help window to learn more about a topic, or see information relevant to the Composer project.

# SIEMENS



WW8000

## Composer MP4.20

### Configuration Quick Reference Guide

Siemens Switzerland Ltd  
Building Technologies Group  
International Headquarters  
Fire Safety & Security Products  
Gubelstrasse 22  
CH-6301 Zug

Document no. **A6V10067783\_a\_en**  
Edition 06.2009

Tel +41 41 724 24 24  
Fax +41 41 724 35 22  
[www.sbt.siemens.com](http://www.sbt.siemens.com)

DMS8000 Technical Material  
Section 6

**Building Technologies**

Fire Safety & Security Products

# 1 Projects Management window

When you start Composer, the following window displays:

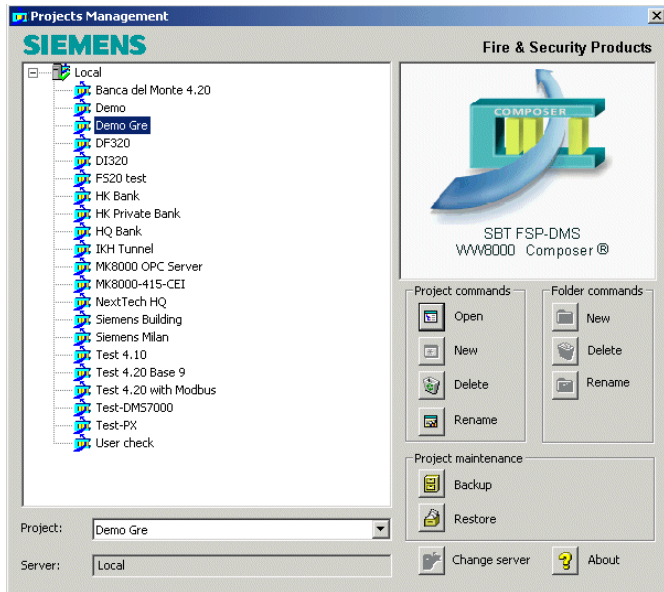


Fig. 1 Projects Management window

The following describes commands that are not necessarily intuitive:

- Change server: Change the server connection. If working in Remote Composer and/or in Multi-user mode, select this function to locate the server you want to connect to.
  - For details on different modes of operation in Composer, see the *Composer Technical Manual* (STEP #A6V10062401).
- About: See detailed information about the current version of Composer. Select **Advanced** to view licenses currently installed.

# 2 Configuration workflow

The following steps outline the general workflow when configuring a project in Composer:

1. Structure the project (set up the folder structure).
2. Insert the communication network.
3. Insert the subsystems and import the corresponding metafiles.
  - Hint:** Use **CTRL+arrow** to quickly move a selected node up or down OR
  - ALT+mouse** to drag and drop a node into another position.
  - Use the Shift key to insert more than one new node at the same time.
  - Note:** For a complete list of shortcut keys, see the *Composer Technical Manual*.
4. Link the subsystems to the network (drag and drop).
5. Customise the behaviour of the DMS.
6. Download the configuration.
7. Backup your project

# 3 Menus / tree functions

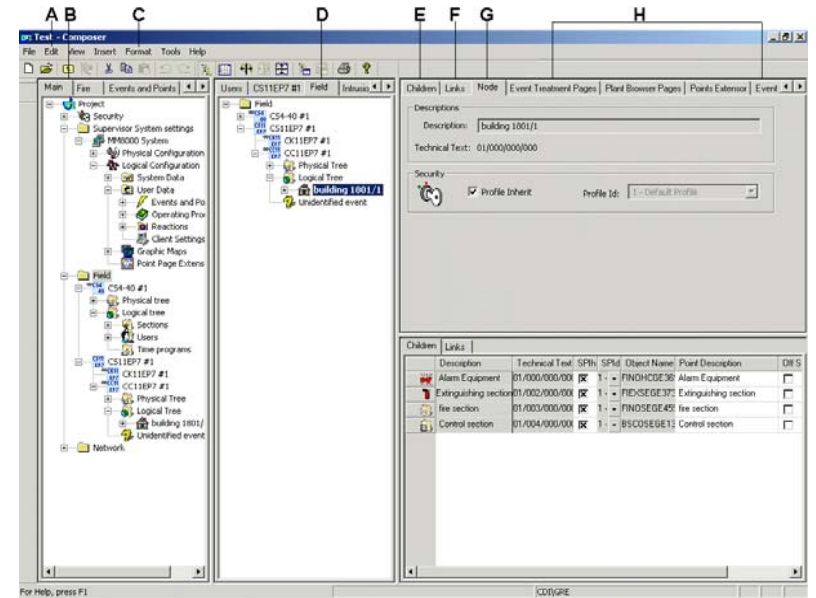


Fig. 2 Split tree example with split data view

Item:	Select:	To:
A	Edit → Find	Quickly locate a node in the tree.
	Edit → Find Next	Quickly locate a successive node in the tree.
C, D	Format → Filter → New	Set up a filter to display one or more disciplines and/or object types. (See "D" above.)
	Format → Grid	Show/Hide/Sort columns in the data view.
	Format → Zoom	Focus on a specific part of the tree.

# 4 Tab features

The Tabs shown in Fig. 2 contain the detailed information needed for configuration. The Tabs "B" and "E" through "G" are always present. All other Tabs that are displayed depend on the node selected and the DMS the project is configured for.

Item:	Select:	To:
B	Main tab	Display all the contents of the tree.
E	Children tab	Display all the children of a node. The visibility of the properties can be flexibly set as needed. Furthermore, this view can be used to edit the configuration parameters of the children nodes in a single step similar to MS Excel.
F	Links tab	Find where the link to a node is in tree. Navigate between the links by double-clicking the icon.
G	Node tab	View detailed properties for a selected node.
H	...	Use these tabs to access all other detailed configuration data, such as event treatment or plant browser pages. <b>Note:</b> Tabs displayed will vary depending on node selected.