

# SIEMENS



## MT8001 MP4.20 Management Terminal

Localisation guide

Data and design subject to change without notice. Supply subject to availability  
© Copyright by  
Siemens AG Building Technologies group

We reserve all rights in this document and in the subject thereof. By acceptance of the document the recipient acknowledges these rights and undertakes not to publish the document nor the subject thereof in full or in part, nor to make them available to any third party without our prior express written authorization, nor to use it for any purpose other than for which it was delivered to him.

|          |   |           |
|----------|---|-----------|
| <b>1</b> | <b>Introduction .....</b>                             | <b>4</b>  |
| 1.1      | What is new in MP4.20 .....                           | 4         |
| <b>2</b> | <b>MT8001 localisation overview.....</b>              | <b>5</b>  |
| 2.1      | Localisation activity .....                           | 5         |
| 2.2      | Localisation toolkit.....                             | 5         |
| 2.3      | Localisation process checklist.....                   | 6         |
| <b>3</b> | <b>Translating System texts with Catalyst .....</b>   | <b>7</b>  |
| 3.1      | What you need to start.....                           | 7         |
| 3.2      | Catalyst Overview .....                               | 7         |
| 3.2.1    | Basic Catalyst instructions.....                      | 8         |
| 3.2.2    | Advanced Catalyst functions .....                     | 10        |
| 3.2.3    | Exporting Catalyst translated texts .....             | 12        |
| 3.3      | MT8001 Catalyst Project Structure .....               | 13        |
| <b>4</b> | <b>Translating XML texts with the XML-Editor.....</b> | <b>14</b> |
| 4.1      | What you need to start.....                           | 14        |
| 4.2      | XML-Editor Overview .....                             | 14        |
| 4.2.1    | Launching the editor .....                            | 14        |
| 4.2.2    | Working with the editor .....                         | 14        |
| 4.2.3    | Creating a new language.....                          | 17        |
| 4.2.4    | Translating Properties texts .....                    | 17        |
| 4.2.5    | Localising symbols of objects and property.....       | 19        |
| 4.2.6    | Save localised XML-DB and leave editor .....          | 20        |
| <b>5</b> | <b>Installing the localised texts .....</b>           | <b>21</b> |
| 5.1      | What you need to start.....                           | 21        |
| 5.2      | Preparing the new text environment .....              | 21        |

# About This Document

---

## Purpose of this document

This guide provides a technical guide for localising the MT8001 terminal software. Individuals performing these operations are expected to have prior expertise in the field of security, at least a moderate level of familiarity with the Siemens Building Technologies product line, and experience with the installation and configuration of security management systems.

## Scope

This document applies to the MT8001 Management Station, version 4.20.

## Target audience

This documentation is intended for the following user:

- Product Managers.

## Documentation resource information

The **DMS8000 Documentation Resource Information Guide** document assembles in one place important information regarding documentation resources. It contains the following:

- Comprehensive definitions of the target audiences for FS DMS documents
- Training program information including the Siemens intranet link
- A complete list of all available DMS8000 documents
- Instructions for how to obtain a document via the Siemens intranet using the STEP Documentation Repository System
- A map of relevant documents for each target audience group
- Customer Support links & resources
- A glossary containing definitions of all terms and acronyms used in DMS8000 documentation

To access the **DMS8000 Documentation Resource Information Guide** (STEP #A6V10089056), go to the link and follow the instructions below:

<https://workspace.sbt.siemens.com/content/00001123/default.aspx>



1. Click on the **STEP WEB Client** image:
2. Choose **04 Fire -3F** from the **Product Segment** box and select **Activate filter**.
3. Select **All** in the **Documents** section of the **Quick Search** page and then select **Advanced Search**.
4. Enter the document number in the **Brochure No.** field (e.g. A6V10089056) and press **Enter**.

## Liability disclaimer for damage or injuries

Before products are delivered, they are tested to ensure they function correctly when used properly. Siemens disclaims all liability for damage or injuries caused by the incorrect application of the instructions, or the disregard of danger advisories. This disclaimer applies in particular to personal injuries or damage caused by:

- Improper and/or incorrect use.
- Disregard of safety instructions in the documentation or on the product.
- Poor maintenance or a lack of maintenance.

We have taken every possible care in preparing this manual. The contents of this manual are revised regularly and brought up to latest standards. Nevertheless, we are unable to provide any guarantee with regard to content, entirety or quality of the details contained in this manual.

### **Disclaimer**

We have checked the contents of this manual for agreement with the hardware and software described. Since deviations cannot be precluded entirely, we cannot guarantee full agreement. However, the data in this manual are reviewed regularly and any necessary corrections included in subsequent editions. Suggestions for improvement are welcome.

### **Modification index**

| <b>Versions</b> | <b>Date</b> | <b>Notes</b>   |
|-----------------|-------------|--|
| MP4.20          | 06.2009     | Corresponds to version 4.20 of MM8000 Management Terminal Software |
| MP4.15          | 09.2005     | Corresponds to version 4.15 of MM8000 Management Terminal Software |
| MP1.20          | 02.2004     | Corresponds to version 1.20 of MT8001 Management Terminal Software |

## **Acknowledgments**

---

We wish to thank all the Siemens colleagues and the customers who have given us feedbacks and comments about this documentation.

# 1 Introduction

---

This is a guide to the localisation procedures for the MM8001 Management Terminal. It provides the following information:

- General overview of the MT8001 localisation process.
- Guide for the localisation activities using Alchemy Catalyst.
- Details on localising XML-DB texts using XML editor.
- Instructions how to install the localised texts onto the MT8001 terminal.

## 1.1 What is new in MP4.20

---

The localisation process is still mostly based on the Catalyst tool, which can share a glossary with the MM8000 texts. The XML database, containing the MT8001 property texts, can be localised with the same tool as MM8000, the XML-editor utility.

The subsystem model texts, which are used to start a new Composer configuration, are the same as for MM8000. If a translation is available for MM8000, these texts need not to be translated again.

## 2 MT8001 localisation overview

The following is a general overview of the MT8001 localisation process.

### 2.1 Localisation activity

#### What is localisation?

The MT8001 is distributed by SBT FS DMS with English texts. The activity required to translate the English texts and to customize the default settings is called **localisation**. The MM8000 localisation process includes:

- Translation of **MT8001 system texts and menus** used in the terminal user interface.
- Translation of **MT8001 point property texts**. These texts describe the states of the point properties such as Alarm, Fault, and so on.



In this version, the Composer system texts cannot be translated, and the tools can be used in English only.

### 2.2 Localisation toolkit

The MT8001 localisation is supported by a toolkit that is provided upon request. The toolkit is distributed in the MT8001 CD and includes the files illustrated below:

| MM8000 Localisation toolkit files |                                  | Contents   |
|-----------------------------------|----------------------------------|--|
| A                                 | xml files                        | XML-DB containing the MT8001 texts for point properties.   |
| B                                 | CatQS_ALL.exe                    | Setup file for Catalyst 4 Quickship application. This free-of-charge software can open .TTK data files and translate texts.                                |
| C                                 | MT8001 MP4.20 Def.TTK            | Catalyst data files for MT8001, including texts in English. To start with the localisation procedure.  |
| D                                 | MT8001 XML Editor.exe            | XML editor application. It is used to localise the XML-DB.   |
| E                                 | MM8000 Build ZIP File.exe        | Utility application that can create the LANG-xxx.ZIP file required to install the localised texts.   |
| F                                 | MT8001 Language Installation.exe | Texts installation utility. It can update the Composer environments in order to include the texts for MT8001 system terminal and configurations templates. |

Tab.1 Localisation Toolkit files

## 2.3 Localisation process checklist

---

### Items needed

- A PC running a Windows edition that supports the language you want to translate to. On the PC, check the locale setting in: 'Start → Control Panel → Regional options → General tab/Windows locale'. The PC must be compatible with the Composer tool (refer to the Composer Technical Manual).
- Administrator username and password for the PC.
- The MT8001 MP4.20 CD.
- If you have any previous MT8001 localisation, contact the customer support to get the existing texts imported into the new Catalyst project.

### Localisation checklist

- Log in as Windows administrator.
- From the MT8001 CD, install Composer.
- From the MT8001 CD, copy the Localisation Toolkit files on a new folder on the local disk and remove the "Read-Only" attribute. Do not use the Toolkit files on a CD-Rom.
- Install Catalyst.
- Localise the MT8001 system (see section 3).  
In case of first localisation, create a new TTK file ('MM8000 MP 4.20 ENG.ttk' → 'MM8000 MP 4.20 XXX.ttk').
- Extract MM8000 texts and generate DLL files<sup>1</sup>.
- Localise the XML-DB texts (see section 4).
- Create the LANG-xxx.ZIP file: use the "MM8000 Build ZIP File.exe" utility.
- Install the language files: use the 'MT8001 Language installation.exe' utility.
- In Composer, create a new project or run the "Localization update" on the MT8001 node of an existing project.
- When the Composer project is ready, prepare and transfer the new database to MT8001 applying the standard procedure (see MT8001 Installation, Configuration and Commissioning guide).
- Run the localised MT8001 and check the translated texts.
- If required, correct the Catalyst or XML texts, then install them again for refining the localisation.
- When finished, save the final localised toolkit.

---

<sup>1</sup> A licensed Catalyst edition is required for exporting texts into DLLs See section 3.



## 3 Translating System texts with Catalyst

### 3.1 What you need to start

---

To start the localisation of MT8001 system texts, the following is required:

- MT8001 Default English Project (MT8000 4.20 Def.ttk).  
For any released version of MT8001 a default English project is available in the localisation toolkit folder (or contact customer support).
- Catalyst software, which is discussed in the next section.

### 3.2 Catalyst Overview

---

Catalyst is an integrated translation environment by Alchemy Software (<http://www.alchemysoftware.ie/>). This application can extract (import) the text from executable files (e.g. EXE and DLL), and create a database file (TTK) that can be used for a comfortable translation, assisted by a guided interface, and management tools.

When complete, translated text can be exported back to DLL and XML files, which can be installed to get the localised software application.

#### Catalyst editions

Catalyst is available in 4 different editions (see also the catalyst product list at <http://www.alchemysoftware.ie/products/productline.html>). These editions are:

- **Catalyst Quickship or Light Edition**  
Distributed free of charge and included in the MT8001 localisation toolkit. This edition allows you to translate the TTK text databases, but you cannot export text into DLL, and then test the localised MT8001. In order to check the results you need to ship the TTK files to customer support, and wait for the exported DLL files. Catalyst Quickship can be downloaded at: <http://www.alchemysoftware.ie/quickship/>.
- **Catalyst Translator Edition**  
This edition is not included in the MT8000 toolkit, but is available for a moderate charge. This software enables you to translate the TTK text databases, to export text into DLL, and to test the localised MT8000.
- **Catalyst Localiser Edition**  
In addition to what is available in the Translator edition, Localiser provides more advanced tools for easy update of text versions, and more powerful tools for text activity management.
- **Catalyst Developer Edition**  
This edition also supports tools for creating Quickship TTK databases.



---

**Note:** We recommend you use the **Localiser** edition of Catalyst. Using the Quickship/Light Edition (at no cost) will not permit you to immediately verify the localised software, possibly resulting in a long and costly localisation process.

---

#### Training on Catalyst

Using catalyst software is quite simple. Before using it extensively however, we recommend that you run some training sessions. These are available on the Internet at: <http://www.alchemysoftware.ie/tutorials/index.html>.

### 3.2.1 Basic Catalyst instructions

Here a short description of the Catalyst menu and of the symbols used into the 'MT8001 project':

#### Set target language

In Catalyst, open the TTK file (as supplied by FS-DMS) and select your target language (see Fig. 1). If you are using the Catalyst QuickShip version language selection is greyed-out. In this case, it must be set by your technical support organisation, either before or after the translation is completed.



Fig. 1 Target language setting

#### Navigation tree

Open the navigation tree as indicated in Fig. 2.

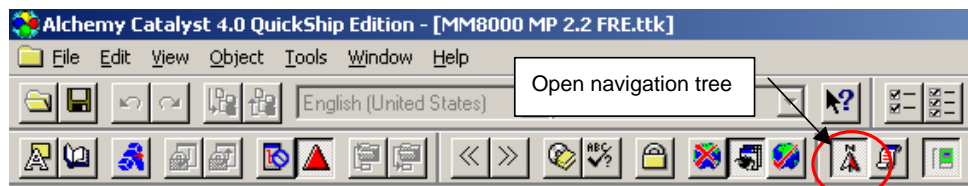


Fig. 2 Open Navigation Tree

This results in a tree view being displayed on the left hand side (see Fig. 3), showing a number of resource groups. The ones indicated by the priority sign (a red triangle "▲") have to be translated. Those marked with the symbol "ⓘ" do not normally need to be translated and may be ignored.



**Note:** Do not remove the symbol "ⓘ" yourself. This may result in malfunctions of Composer.

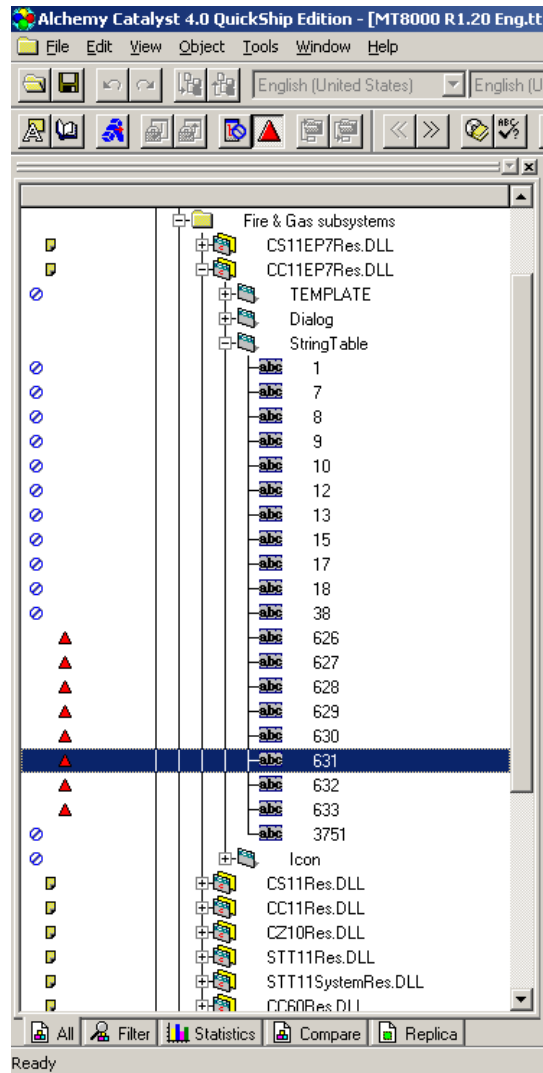


Fig. 3 Catalyst Tree View

### Translating Texts

One after the other, select the resource groups in the tree structure and then translate the texts that appears in the list on the right pane. See Fig. 4.

Note that the user interface differs depending on the Catalyst version you are using. However, in any case, the same general concepts apply.

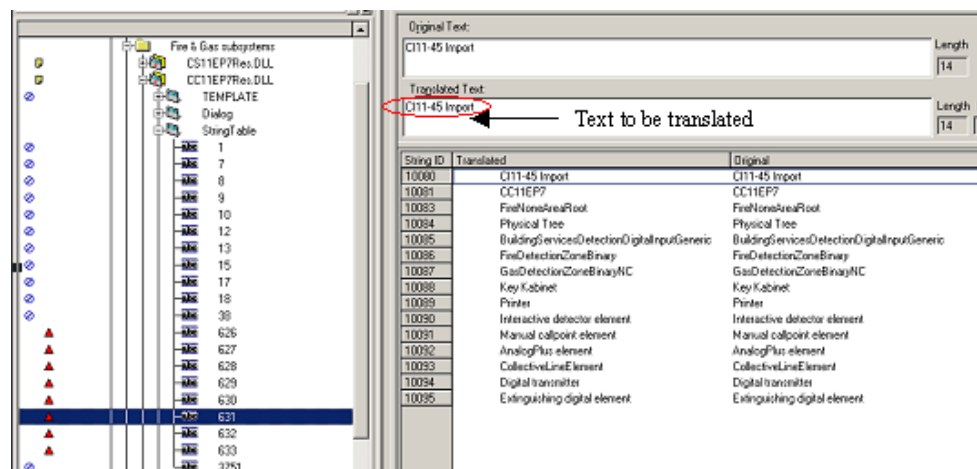



Fig. 4 Translating texts

## 3.2.2 Advanced Catalyst functions

### Find and Replace function

Some of the texts used by MT8001 are repeated several times. To reduce the localization time and effort the 'Find and Replace' function is a good solution, although it should be used judiciously.

The 'Find and Replace' operation (identified by the icon “”) works in the same way as in any standard application. See Fig. 5.

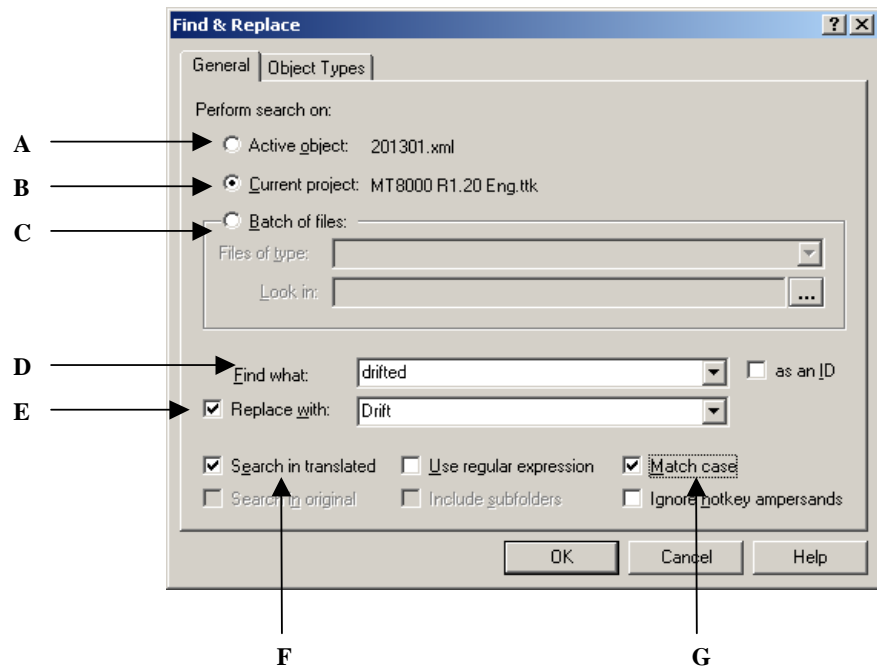


Fig. 5 Find & Replace window

- A Active Object:** if enabled, 'Find & Replace' will be applied to a single object.
- B Current Project:** if enabled, 'Find & Replace' will be applied to all project texts.
- C Batch of files:** advanced features, normally not used.
- D Find what:** insert the text that you want find or replace.
- E Replace With:** insert the new text that will replace the older one.
- F Search in...:** indicate in which column the function should search. In this case it is searching only in the translated text column.
- G Match case:** apply changes only if the upper and lower case of the letters in the target words agree with those specified in the 'Find what' field.

### How to use the spelling checker

1. Choose Tools → Options → the General tab from the Catalyst menu.
2. Select your language under the Dictionary dropdown.  
**Note:** You should also select 'Perform auto checking' and 'Hotkey aware', as these options will notify you if you misspell a word while you are working, and will ignore ampersands (&) when spellchecking.
3. Select 'OK'.
  - To quickly correct any misspellings while translating, click Edit → QuickSpell, or press F3 to display a list of suggested corrections. Double-click a correction to replace the misspelling with the selected correction.
  - To check the spelling of a text string, click Edit→ Spell Check, or press F4.



---

**Note:** The detailed instructions refer to Catalyst Quickship V4 that is supplied in the localisation toolkit. The same functions, possibly in slightly different menu options, are also available in Catalyst V5 and V6.

---

### How to use a technical glossary

1. Choose Tools → Options → General from the menu.
2. Select the 'Glossary' tab within the Options property sheet.
3. Check the box beside 'Glossary 1' and select the glossary you wish to use.  
**Note:** You can attach two glossaries, and you have the option to suggest from the TTK you are currently working in. You also have the option to select 'Update glossary file with (TTK) translations on close of (TTK) file'. This will add new translations in your TTK to your glossary file each time you close the TTK.

While translating or editing, to ensure correct and consistent terminology for your translations, click Edit → Glossary, or press F2 to look up recommended translation suggestions while translating or editing text strings in objects.



---

**Note:** The detailed instructions refer to Catalyst Quickship V4 that is supplied in the localisation toolkit. The same functions, possibly in slightly different menu options, are also available in Catalyst V5 and V6.

---



---

If you have translated the Catalyst texts for MM8000, you can create a glossary and use it to speed up the MT8001 translation.

---

### Localisation of menus and dialogs

Menus and dialog windows can be translated in WYSIWYG mode ('What You See Is What You Get'). The menu and the windows display exactly as they would appear in the software application when viewed by a user (and can be adjusted).

If you use Catalyst Quickship V4, just press F7 or the button shown in Fig. 6.

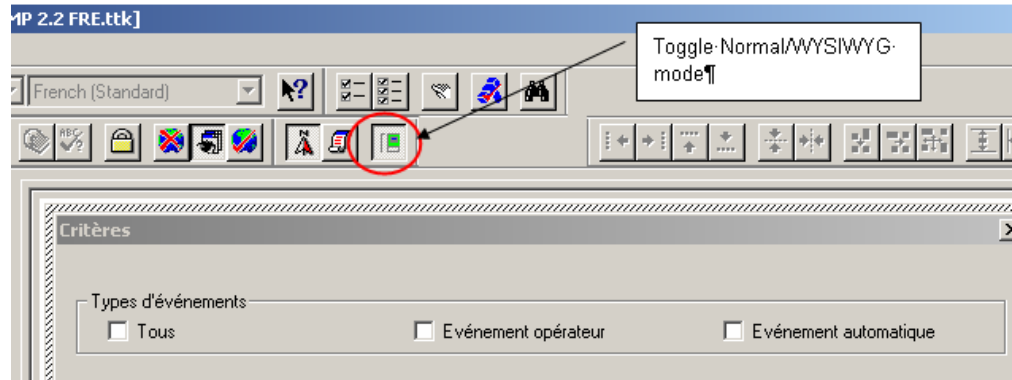


Fig. 6 Using WYSIWYG mode

### How to enable automatic translation (“replica” option)

1. Choose Tools → Options → CATALYST Experts from the menu.
2. Select the ‘Replica’ tab within the Expert Options property sheet.
3. Check the box beside ‘Enable Replication’ and select ‘Interactive Replication’.  
Whenever you translate a text, the software will check whether the same string is present in another position and propose a multiple translation.

### 3.2.3 Exporting Catalyst translated texts

This step is required to extract the localised texts and store them in the runtime DLL files replacing the original English texts.

Note that only the licensed editions of Catalyst are enabled to extract texts and updating DLL files

The charged editions of Catalyst also allow you to export the translated texts into the run-time DLL files. To export texts, do the following:

1. Select the top node on the tree.
2. Choose File → Extract section (or Extract file, depending on the Catalyst version).
3. In the browsing window that appears, select the destination folder of the files.  
The destination directory of MT8001 file should be the localisation toolkit folder.

### 3.3 MT8001 Catalyst Project Structure

The default MT8001 project will be presented as shown in Fig. 7. It includes 6747 word to translate in two sections: 1059 words for the MT8001 runtime texts and the rest for the MT8001 Subsystem Tool texts.

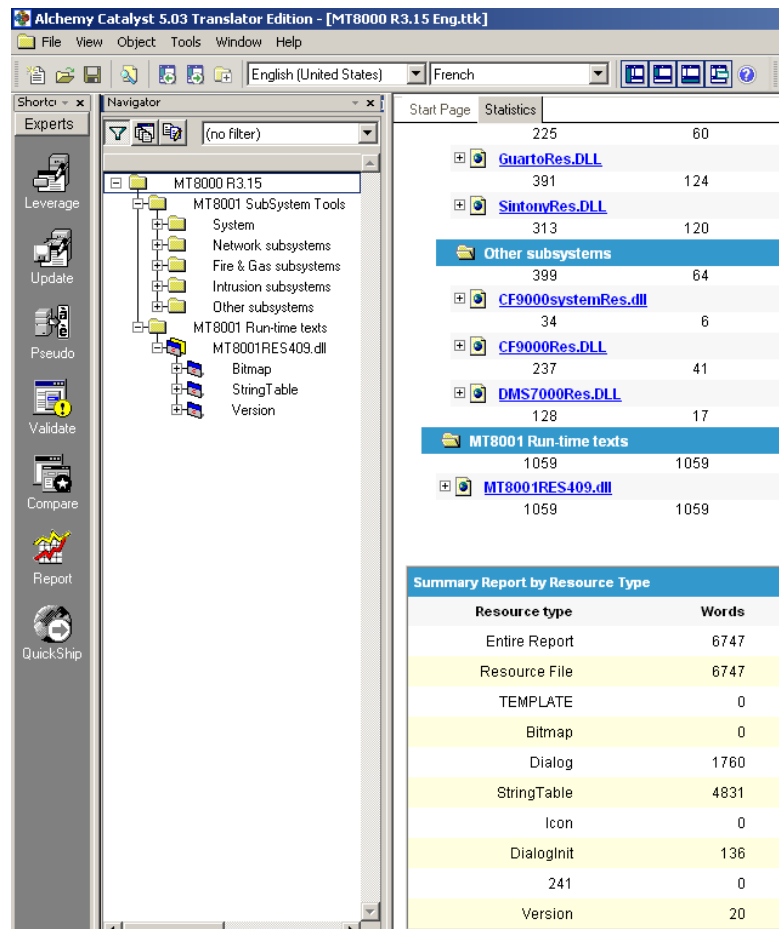


Fig. 7 MT8001 Catalyst Project report



If you have translated the Catalyst texts for MM8000, then you already have the Subsystem Tools texts available. Please contact customer support to have the translation imported into the MT8001 Catalyst project.

# 4 Translating XML texts with the XML-Editor

## 4.1 What you need to start

To start the localisation of MT8001 XML texts, the following is required:

- MT8001 toolkit copied on the local disk.
- Composer environment installed.

## 4.2 XML-Editor Overview

With the XML Editor, you can open the MT8001 XML files and modify the text information and the symbol association.

### 4.2.1 Launching the editor

#### Starting XML Editor for localisation

You start the XML Editor launching 'MT8001 XML Editor.exe' from the Localisation toolkit folder (see Tab.1 at p. 5).

**Note:** the program must run under an account with administration rights.

### 4.2.2 Working with the editor

#### XML Editor menu

The XML Editor provides a Windows-standard interface. The main menu and the toolbar are illustrated in Fig. 8.

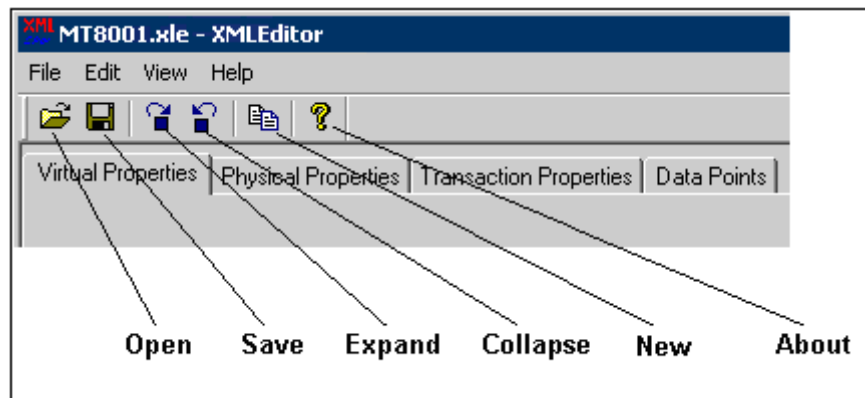



Fig. 8 XML Editor interface



The command list in the XML Editor menu includes:

| Selection ... |                        | Toolbar   | Command  |
|---------------|------------------------|---|--|
| File →        | Open                   |    | Open XML-DB  |
|               | Save                   |    | Save information into XML-DB   |
|               | Import old XML         | -   | Import the localised XML-DB from a previous release. That will be automatically updated to latest release. |
|               | New localised language | -   | Copy the original XML-DB into a new database, thus creating a new language.                                |
|               | Backup                 | -   | Compress and save the XML-DB   |
|               | Restore                | -   | Uncompress and load the XML-DB   |
|               | Exit                   | -   | Quit XML Editor  |
|               |                        |   |  |
| Edit →        | Expand                 |    | Expand the sub-tree whose root is the selected node  |
|               | Collapse               |    | Collapse the sub-tree whose root is the selected node  |
|               | Replace                | -   | Replace a text through the entire database   |
| View →        | Toolbar                | -   | Enable the toolbar, just below the menu.   |
| Help →        | About                  |  | Show the 'About' window  |

### Data view

When used for MT8001, the XML Editor only includes one data view, organised in four active columns, shown in white background (Fig. 9). An additional space is available on the right for general information.

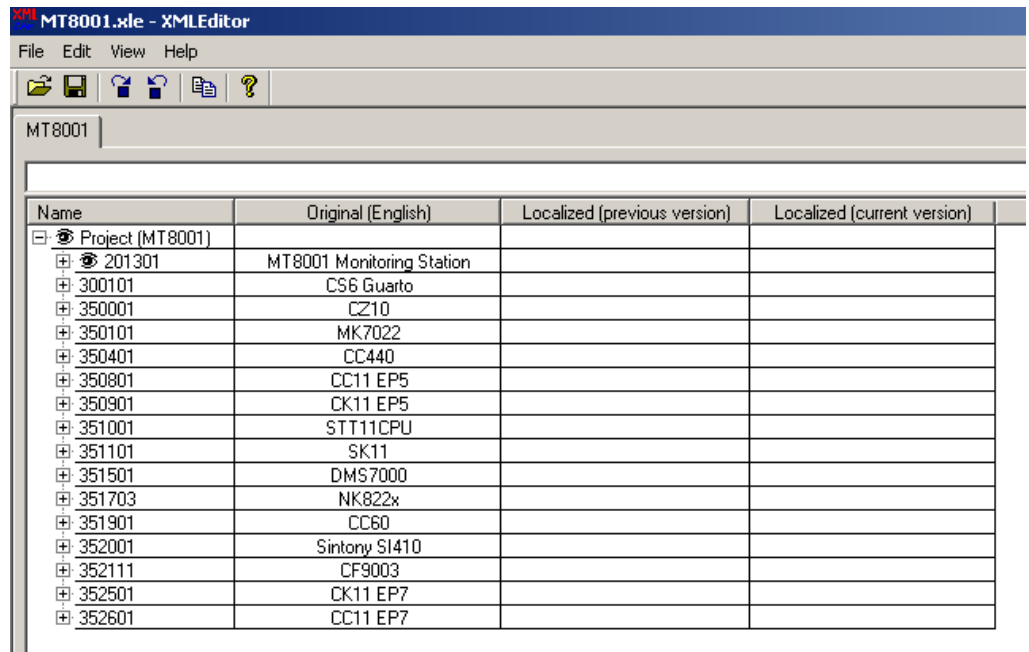


Fig. 9 XML Editor tabs

The four columns contain:

| Title                        | Contents   |
|------------------------------|--|
| Name                         | This column lists the text items (object properties) and, for each of them, its conditions and commands.<br>In this column, a special icon (▲) shows up next to the name when the value has not been modified yet; then, after the translation, a new icon is used (●) to indicate that a final revision is required.<br>The icon can be cleared by right clicking the line, and then selecting the command 'Icon reset'.  |
| Original (English)           | Here the original property text in English is shown. This text cannot be edited.<br>In case of Data Points, the original icon number is shown.   |
| Localised (previous version) | This column is only used when a previous XML-DB release is imported. In this case, the previous text (or icon number) is reported here. This value cannot be edited and it is shown for reference only.  |
| Localised (current version)  | This column contains the localised texts (or icons) that, initially in English, are progressively translated. You can edit the text field in two ways:<br>1) Individually: select the line and then the field in this column (use a single click). At that point, you can replace or modify the field and then press Enter to confirm (see Fig. 10).<br>2) Sequentially: select the line (first mouse click) and then click on the editing field just below the menu and the toolbar (see Fig. 11).<br>At that point, you can replace or modify the field and then press Enter to confirm. The program automatically moves to the next line and select the text field for editing (in certain cases, you may have to press Enter again to step ahead to next field).<br>Localised value is shown in green colour instead of black. |

| Name              | Original (English) | Localized (previous version) | Localized (current version) |
|-------------------|--------------------|------------------------------|-----------------------------|
| intrusion section |                    |                              | intrusion section           |
| Burglary zone     |                    |                              | Burglary zone               |
| SymID             | 10306              |                              | 10306                       |
| LPs               |                    |                              | 10306                       |
| 77                | Desc               |                              | Desc                        |
| 1024              | Alarm              |                              | Alarm                       |
| SymID             | 1                  |                              | 1                           |
| Causes            |                    |                              |                             |
| LPCmds            |                    |                              |                             |
| EVPs              |                    |                              |                             |
| 1032              | Test               |                              | Test                        |
| 1036              | Not Ready          |                              | Not Ready                   |
| 1039              | Disconnected       |                              | Disconnected                |

Fig. 10 Individual text editing

| Name       | Original (English) | Localized (previous version) | Localized (current version) |
|------------|--------------------|------------------------------|-----------------------------|
| Causes     |                    |                              |                             |
| 0          | Normal             |                              | Normal                      |
| SymID      | 765                |                              | 765                         |
| 2          | Alarm              |                              | Alarm                       |
| SymID      | 25                 |                              | 25                          |
| 4          | Alarm              |                              | Alarm                       |
| SymID      | 25                 |                              | 25                          |
| 3          | Alarm              |                              | Alarm                       |
| SymID      | 25                 |                              | 25                          |
| LPCmds     |                    |                              |                             |
| 1          | Acknowledge        |                              | Acquitter                   |
| SymID      | 0                  |                              | 0                           |
| ActionDesc | Acknowledge        |                              | Acknowledge                 |
| 2          | Reset              |                              | Reset                       |
| EVPs       |                    |                              |                             |
| 1032       | Test               |                              | Test                        |
| 1036       | Not Ready          |                              | Not Ready                   |
| 1039       | Disconnected       |                              | Disconnected                |

Fig. 11 Sequential text editing

### 4.2.3 Creating a new language

When starting a new localisation, you first have to copy the original XML-DB into a new database. Use the 'New localised language' command and, when prompted, confirm it.

This command results in the 'Localised (current version)' column being populated by texts, which are initially the same as the original English. Also, all items are marked with the 'not-translated-yet' sign (▲). See Fig. 12.

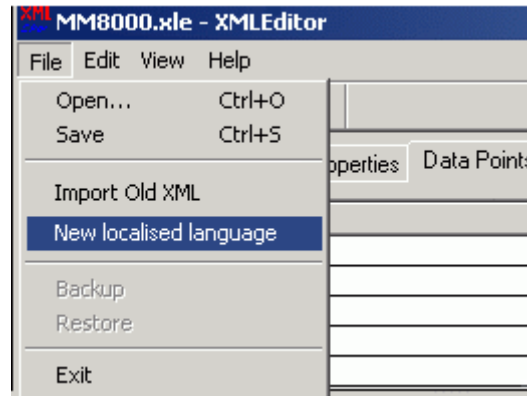


Fig. 12 Select 'New localised language' to start a new localisation

### 4.2.4 Translating Properties texts

The property texts are included in three tabs of the user interface (p.15): Virtual Properties, Physical Properties, and Transaction Properties.

#### Required texts

The XML file structure includes several parts. For the localisation purposes, only the "Causes" and "LPCmds" sections are important and must be translated, whereas other texts can be ignored. See Fig. 13.

|          |                   |                          |  |
|----------|-------------------|--------------------------|--|
| 7040     | Main Supply Fault | Main Supply Fault        |  |
| ▲ SymID  | 603               | 603                      |  |
| ▲ Causes |                   |                          |  |
| ▲ 0      | Normal            | Normale                  |  |
| ▲ 1      | Active            | Active                   |  |
| ▲ 2      | Power Fault       | Dérangement alimentation |  |
| ▲ 3      | Power Fault       | Dérangement alimentation |  |
| ▲ 4      | Power Fault       | Dérangement alimentation |  |
| ▲ SymID  | 0                 | 0                        |  |
| ▲ LPCmds |                   |                          |  |
| ▲ EVPs   |                   |                          |  |

Fig. 13 Example of "Causes" text

#### Translation checklist

To translate texts, you have to:

1. Select a group in the Name column.
2. Expand the sub-tree to show the "Cause" texts.
3. Select the first text clicking on the corresponding line.
4. Press F2 or click the text in the 'Localised (current version)' column (individual editing, Fig. 10)  
-- or --  
click the editing field (sequential editing, Fig. 11).
5. Translate the text and confirm with Enter.

6. Translate all “Cause” texts, repeating steps 3 to 5.
7. Translate all “LPCmds” texts, repeating steps 3 to 5.
8. Translate all groups, repeating the steps above.

### The Replace command

Some of the XML-DB fields actually contain the very same texts (e.g. Alarm, Fault, etc.). Therefore, the global replacement function offers a powerful way to translate the entire database quickly and consistently.

Just start the command ‘Edit → Replace’ and then fill in the window that shows up (Fig. 14). You can first try a single substitution (Replace) and then operate globally (Replace All).

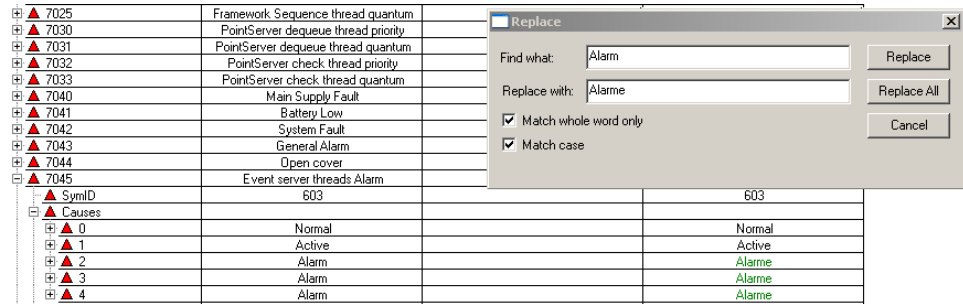


Fig. 14 Filling in the Replace window



In the list, the MT8001 properties are repeated for each object and each type of control unit.

This can give you the maximum flexibility in the way you want to translate the status and command texts for each object.

On the other hand, this approach creates large amount of texts to translate. Here are some recommendations about how to speed up the activity:

- 1) No “Undo” function is provided, therefore backup the XML folder in case you need to correct any mistakes.
- 2) Use the “Replace” function as much as possible in order to quickly translate the same descriptions and be consistent across the entire file.
- 3) When you can select the “Replace all” option for automatic replacement, check the report that appears on the screen: there you can verify whether the affected properties are the ones you really intended to modify.
- 4) In case of doubt, go for the individual replacement that let you check the substitutions one by one.
- 5) Pay attention to the English descriptions such as On, Off, Include, Exclude, which occurs in quite a few cases and may need to be translated in different ways depending on the application.
- 6) If you intend to use the MT8001 in a larger system with MM8000, consider the need of consistency of the texts in the two products. You can check the MM8000 properties text in the “lps.xml” file of the MM8000 localised kit.

## 4.2.5 Localising symbols of objects and property

In certain cases it may be necessary to modify the symbols associated to the MT8001 objects and properties. The associated symbol is defined by the number indicated in the SymID line.

|                  |                               |  |                               |
|------------------|-------------------------------|--|-------------------------------|
| Project (MT8001) |                               |  |                               |
| 201301           | MT8001 Monitoring Station     |  | MT8001 Monitoring Station     |
| 300101           | CS6 Guarato                   |  | CS6 Guarato                   |
| NTs              |                               |  |                               |
| 1                | CS6 Guarato                   |  | CS6 Guarato                   |
| SymID            | 11200                         |  | 11200                         |
| LPs              |                               |  |                               |
| 256              | Area                          |  | Area                          |
| 257              | Door monitor zone             |  | Door monitor zone             |
| 258              | Terminal main CT6M / CT6C     |  | Terminal main CT6M / CT6C     |
| 259              | Terminal auxiliar CT4-05 / 06 |  | Terminal auxiliar CT4-05 / 06 |

Fig. 15 Setting a new symbol number

A mouse click on the symbol number in the localised column results in a selection window being displayed (Fig. 16). Select the new symbol and click OK, or click Cancel to leave with no changes.

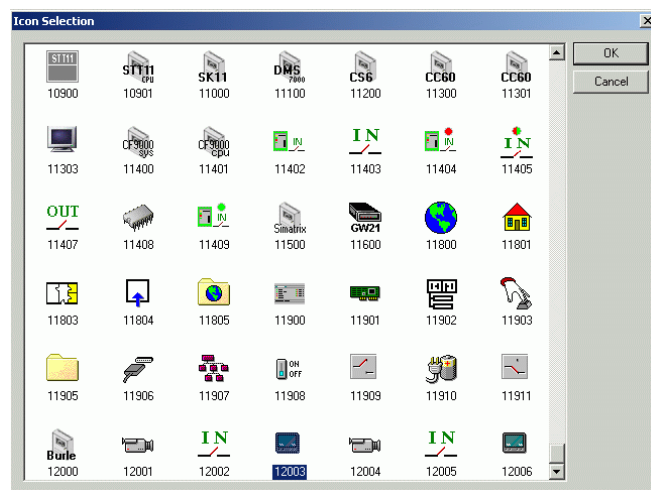


Fig. 16 Selecting a new symbol

### Symbol localisation checklist

1. Select a group in the Name column.
2. Expand the sub-tree and select the object or property you want to modify.
3. Select the line named 'SymID'.
4. Click on the value in the 'Localised (current version)' column.
5. Select the new icon (Fig. 16).
6. Repeating the steps above for any other symbol you want to change.

## 4.2.6 Save localised XML-DB and leave editor

---

You can close the XML editor by selecting File → Exit. There is no risk you can lose the data you just entered: upon terminating the program, a window displays like the one shown in Fig. 17.

If you want to save the changes to the XML-DB, click 'Yes'; instead, if you want to discard the latest modifications, select 'No'. Clicking 'Cancel' results in aborting the program termination and in the editor remaining active.

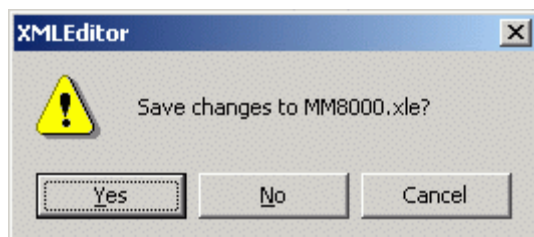


Fig. 17 Save XML-DB files

## 5 Installing the localised texts

---

### 5.1 What you need to start

---

To start the localisation of MT8001 XML texts, the following is required:

- Catalyst texts translated and then extracted in to the toolkit folder.
- XML texts translated.
- Composer environment installed.

### 5.2 Preparing the new text environment

---

Once both the Catalyst and XML texts are translated, you can proceed to the installation of texts. This procedure includes:

- Creating a compressed file with the complete set of files.
- Installing the compressed files.
- Transferring the files to the MT8001 terminal unit.

#### **Creating the text ZIP file**

Using the “MM8000 Build ZIP File.exe” utility, available in the localisation toolkit, you can create a compressed file that contains all text files and is named: LANG-xxx:ZIP, where “xxx” indicates the language (e.g. FRE for French).

#### **Installing texts**

Starting from the compressed text file, the “Language Installation” utility can update the Composer environment in order to:

- Install the new system texts for MT8001
- Update the subsystem templates for MT8001 projects

#### **Updating texts on an existing MT8001 project**

In Composer, new MT8001 projects automatically include the new texts. Instead, the current project requires to be updated. Just proceed as follows:

1. Set the Debug key of Composer using the “ST\_DebugYes.reg” file placed in ‘\MT8001\Utilities\Reg’ path.
2. Start Composer.
3. Open the MT8001 project.
4. In the structure tree on the left, select the MT8001 node.
5. In the working pane on the right, select the Node tab.
6. Click the “Localization Update” button.
7. Wait for the procedure to complete.
8. On the same Node tab, click the “Update Project” (to overwrite the XML of your project with the new localised files).
9. Wait for the procedure to complete.
10. Remove the debug option using the file “ST\_DebugNo.reg”.

**Transferring texts**

The MT8001 will be updated with the new texts when the new configuration is transferred to the terminal. The standard MT8001 preparation and transferring procedure can be applied; please refer to the MT8001 Installation, Configuration and Commissioning guide.





Siemens Switzerland Ltd  
Building Technologies Group  
International Headquarters  
Fire Safety & Security Products  
Gubelstrasse 22  
CH-6301 Zug  
Tel +41 41 724 24 24  
Fax +41 41 724 35 22  
[www.sbt.siemens.com](http://www.sbt.siemens.com)

---

Document no. A6V10096138\_a\_en  
Edition 06.2009

MT8001 Technical Material  
Section 8