

# SIEMENS



## MM8000 MP4.20

## Product Localisation

## Engineering Guide

**Building Technologies**

Fire Safety & Security Products

Data and design subject to change without notice. / Supply subject to availability.

© 2009 Copyright by  
Siemens Switzerland Ltd

We reserve all rights in this document and in the subject thereof. By acceptance of the document the recipient acknowledges these rights and undertakes not to publish the document nor the subject thereof in full or in part, nor to make them available to any third party without our prior express written authorization, nor to use it for any purpose other than for which it was delivered to him.

<b>1</b>	<b>Introduction .....</b>	<b>6</b>
1.1	What is new in MP4.20 .....	6
1.2	Documentation corrections in this edition .....	6
<b>2</b>	<b>MM8000 localisation overview .....</b>	<b>7</b>
2.1	Localisation activity .....	7
2.2	File formats .....	8
2.3	Localisation toolkit.....	9
2.4	Localisation process checklist.....	10
<b>3</b>	<b>Localising texts using Catalyst .....</b>	<b>12</b>
3.1	Catalyst overview .....	12
3.2	Localising MM8000 texts with Catalyst.....	13
3.2.1	Basic Catalyst instructions.....	13
3.2.2	Updating texts from previous MM8000 release.....	17
3.2.3	Extracting texts .....	17
<b>4</b>	<b>Localising point properties using XML Editor .....</b>	<b>18</b>
4.1	XML-DB.....	18
4.2	XML Editor .....	18
4.2.1	Launching the editor .....	18
4.2.2	Working with the editor .....	18
4.2.3	Creating a new language.....	22
4.2.4	Translating Properties texts .....	22
4.2.5	Localising Data Point Icons .....	25
4.2.6	Importing XML-DB from previous MM8000 release .....	26
4.2.7	Save localised XML-DB and leave editor .....	27
<b>5</b>	<b>Default project .....</b>	<b>28</b>
5.1	Localisation of MM8000 default project .....	28
<b>6</b>	<b>Further customisation activities.....</b>	<b>30</b>
6.1	GSM and Pager character set .....	30
<b>7</b>	<b>On-line help files .....</b>	<b>31</b>
7.1	Localisation of MM8000 on-line help .....	31

# About This Document

---

## Purpose of this Document

This guide provides a technical guide for localising the MM8000 software application. Individuals performing these operations are expected to have prior expertise in the field of security, at least a moderate level of familiarity with the Siemens Building Technologies product line, and experience with the installation and configuration of security management systems.

## Scope

This document applies to the MM8000 Management Station, version 4.20.

## Target audience

This documentation is intended for the following users:

- Product Managers

## Documentation resource information

The **DMS8000 Documentation Resource Information Guide** document assembles in one place important information regarding documentation resources. It contains the following:

- Comprehensive definitions of the target audiences for FS DMS documents
- Training program information including the Siemens intranet link
- A complete list of all available DMS8000 documents
- Instructions for how to obtain a document via the Siemens intranet using the STEP Documentation Repository System
- A map of relevant documents for each target audience group
- Customer Support links & resources
- A glossary containing definitions of all terms and acronyms used in DMS8000 documentation

To access the **DMS8000 Documentation Resource Information Guide** (STEP #A6V10089056), go to the link and follow the instructions below:

<https://workspace.sbt.siemens.com/content/00001123/default.aspx>



1. Click on the **STEP WEB Client** image:
2. Choose **04 Fire -3F** from the **Product Segment** box and select **Activate filter**.
3. Select **All** in the **Documents** section of the **Quick Search** page and then select **Advanced Search**.
4. Enter the document number in the **Brochure No.** field (e.g. A6V10089056) and press **Enter**.

**Modification index**

Current version	Date	Notes
MP4.20	06.2009	Corresponds to version 4.20 of MM8000 Management Station Software
MP4.15	06.2008	Corresponds to version 4.15 of MM8000 Management Station Software
MP4.10	06.2007	Corresponds to version 4.10 of MM8000 Management Station Software
MP3.20	06.2006	Corresponds to version 3.20 of MM8000 Management Station Software
MP3.15	09.2005	Corresponds to version 3.15 of MM8000 Management Station Software
MP3.12	06.2005	Corresponds to version 3.12 of MM8000 Management Station Software
MP3.10-01	03.2005	Corresponds to version 3.10-01 of MM8000 Management Station Software
MP3.10	12.2004	Corresponds to version 3.10 of MM8000 Management Station Software
MP2.31	02.2004	Corresponds to version 2.31 of MM8000 Management Station Software
MP2.30	10.2003	Corresponds to version 2.30 of MM8000 Management Station Software

**Disclaimer**

We have checked the contents of this manual for agreement with the hardware and software described. Since deviations cannot be precluded entirely, we cannot guarantee full agreement. However, the data in this manual are reviewed regularly and any necessary corrections included in subsequent editions. Suggestions for improvement are welcome.

# 1 Introduction

---

This is a guide to the localisation procedures for the MM8000 Management Station. It provides the following information:

- General overview of the MM8000 localisation process (Section 2 at p. 7).
- Guide for the localisation activities using Alchemy Catalyst (Section 3 at p. 12).
- Details on localising XML-DB texts using XML editor (Section 4 at p.18).
- Guide for localising and customising the MM8000 default project (Section 5 at p.28).
- Instructions about further localisation activities related to SMS and Pager character sets (Section 6 at p. 30).
- Guidelines about how to translate the on-line help files (Section 7 at p. 31).

If you encounter a problem in the localisation, or an inconsistency in this document, please let us know so that we can better document the next manual. Please contact FS DMS support.

## 1.1 What is new in MP4.20

---

The localisation process has remained the same.

## 1.2 Documentation corrections in this edition

---

The Catalyst project for on-line help files, introduced in MP4.15 and previously missing in this guide, has been documented.

## 2 MM8000 localisation overview

---

The following is a general overview of the MM8000 localisation process.

### 2.1 Localisation activity

---

#### What is localisation?

MM8000 is distributed by SBT FS DMS with English texts. The activity required to translate the English texts and to customise the default settings is called **localisation**.

The MM8000 localisation process includes:

- Translation of **MM8000 system texts** used by the MM8000 user interface.



---

Note: The Composer system texts cannot be translated, and can be used in English only. However, these English texts will not be visible to the final customers using the MM8000 system, unless they are authorised to access the Composer configuration environment.

---

- Translation of **MM8000 configuration tool models**, which are applied to create new set of points in a MM8000 project. For example, you use configuration tool models to define the objects of a new CZ10, CS11, and so on.
- Translation of **MM8000 point property texts**. These texts describe the states of the point properties such as Alarm, Fault, and so on.
- Customisation of **MM8000 default project**, used whenever a new MM8000 configuration is started. The default project can contain text and structure customisations.
- An optional localisation of the **Pager** and/or **SMS character set** can be carried on under the supervision of the MM8000 Customer Support.
- Translation of **MM8000 on-line help texts**, a set of HTML pages that provide information about the function and usage of MM8000.

## 2.2 File formats

MM8000 software environment contains localised texts in various types of files. These include:

- **DLL** files, which are extensions of the program files (.EXE). The MM8000 text DLLs have been merged into two database files that can be handled by the Alchemy *Catalyst* application (see below).
  - MM8000 MP 4.20 ENG.ttk (**system texts**);
  - MM8000 MP 4.20 - Subsystem Tools ENG.ttk (**configuration tool models**);
  - MM8000 MP 4.20 - Help System ENG.ttk (**on-line help texts**);
- **XLE** files; this is the project file recognised by the XML-editor. Select it to open the XML files to translate.
- **XML** files, also indicated as XML-DB or NPS database, which contain the **point property texts**. These files can be edited with a specialised application that is part of the MM8000 software installation, namely the 'XML Editor.exe' program (see below). The use of other XML editors is not recommended.
- **MDB** files (MS-Access 2000 or later), located in the 'MM8000' subfolder and containing a table including a list of Unicode characters and the corresponding character to substitute for SMS and for Pager messages. Note that modifying the standard character mapping in these files requires adequate technical skill and a specific knowledge of the SMS or Paging system in use.
- **On-line help** files, containing the MM8000 project used to start a new Composer configuration (see Fig. 1 below). The default project can contain any customisation, including texts, a basic structure tree, example maps, and so on.
- **Default.bak** file, containing the MM8000 project used to start a new Composer configuration (see Fig. 1 below). The default project can contain any customisation, including texts, a basic structure tree, example maps, and so on.

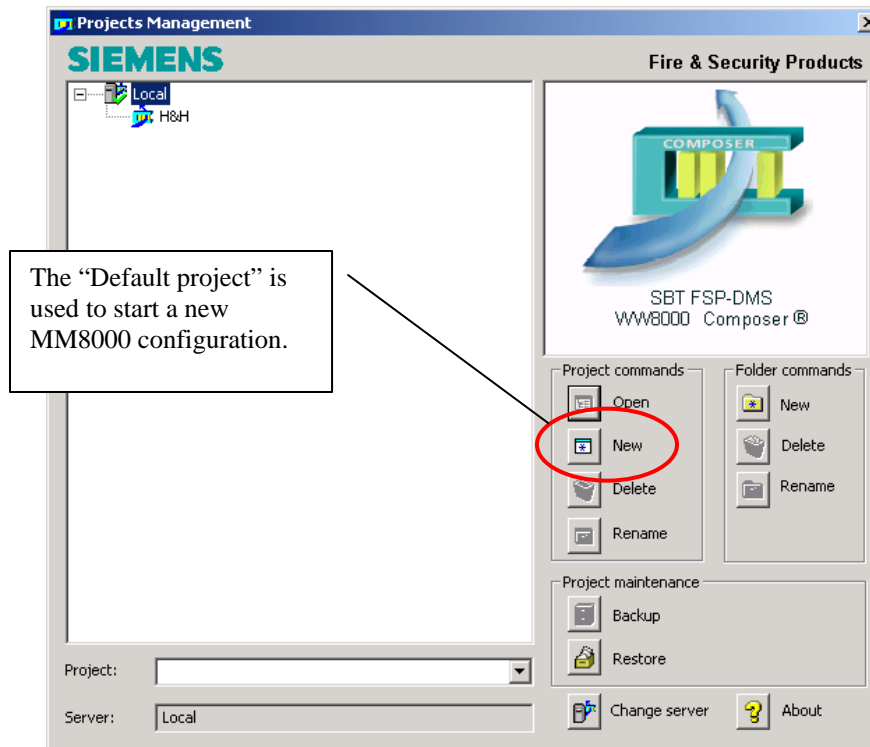


Fig. 1 Default project



## 2.3 Localisation toolkit

The MM8000 localisation is supported by a toolkit that is provided upon request. The toolkit is distributed in the MM8000 CD and includes the files illustrated below:

Name	Size	Type	Date Modified
Default Project		File Folder	13/07/2007 15:55
MM8000		File Folder	13/07/2007 15:55
MM8000 Help		File Folder	13/07/2007 15:55
xml files		File Folder	13/07/2007 15:55
AllSubsystem.txt	4 KB	Text Document	04/04/2007 18:59
Build ZIP File.exe	72 KB	Application	29/11/2006 13:16
CatQS_ALL.exe	23,997 KB	Application	25/03/2003 17:12
dunzip32.dll	95 KB	Application Extension	07/03/2000 23:01
DUZOCX32.OCX	69 KB	ActiveX Control	18/11/1996 13:24
dzip32.dll	122 KB	Application Extension	07/03/2000 23:01
DZOCX32.OCX	72 KB	ActiveX Control	18/11/1996 13:25
Help.txt	1 KB	Text Document	17/01/2005 13:51
LANG-DEF.ZIP	7,986 KB	WinZip File	08/05/2007 08:53
MFCANS32.DLL	156 KB	Application Extension	08/06/2000 17:00
MM8000 Languages.ini	3 KB	Configuration Settings	14/11/2006 10:34
MM8000 MP 4.10 - ENG.ttk	5,671 KB	TTK File	04/05/2007 15:04
MM8000 MP 4.10 - Subsystem...	3,798 KB	TTK File	08/05/2007 10:33
MM8000 XML Editor.exe	288 KB	Application	18/07/2006 10:30
Oc30.dll	626 KB	Application Extension	22/05/1995 01:00

Fig. 2 Toolkit files

Localisation toolkit files	Contents
A <DIR> Default Project	Subfolder containing the MM8000 Composer project used to start a new configuration.
B <DIR> MM8000	Subfolder containing the SMS and Pager character set files. Namely: <b>\\Server\mappingUcs2Gsm.mdb</b> and <b>\\Server\mappingUcs2Pager.mdb</b> . After the Catalyst data compilation, the same folder will include the text DLL extracted from Catalyst database. <b>Note:</b> the <b>MM8000 SubSystem Tools</b> folder will also be created by the compilation procedure.
C <DIR> MM8000 Help	Subfolder for the CHM files (HTML compiled files) containing the MM8000 help texts.
D <DIR> xml files	XML-DB (for NPS server) containing the MM8000 texts for point properties.
E AllSubsystem.txt	List file including the subsystem tools.
F Build ZIP file.exe and DLL and OCX files	Application to create the installable text set (LANG-xxx.ZIP). <b>Note:</b> the application also requires DLL and OCX files.
G CatQS_ALL.exe	Setup file for Catalyst 4 Quickship application. This free-of-charge software can open .TTK data files and translate texts.
H Help.txt	List file including the on-line help modules.
I MM8000 MP 4.20 - Subsystem Tools ENG.ttk	Catalyst data files for MM8000 Composer models texts.
J MM8000 MP 4.20 ENG.ttk	Catalyst data files for MM8000 system texts.
K MM8000 MP 4.20 - Help System ENG.ttk	Catalyst data files for MM8000 on-line help.
L MM8000 - XML Editor.exe	XML editor application. It is used to localise the XML-DB.

Tab.1. Localisation Toolkit files

## 2.4 Localisation process checklist

---

### Items needed

- A PC running Windows 2000 or XP and supporting the language you want to translate to. On the PC, check the locale setting in: 'Start → Control Panel → Regional options → General tab/Windows locale'.
- Administrator username and password for the PC.
- The MM8000 MP4.20 CD.

### Localisation checklist

1. Log in as Windows administrator.
2. Install MM8000 (refer to document 'MM8000 Installation, Configuration, and Commissioning' and Release Notes).
3. From the MM8000 CD, copy the Localisation Toolkit files on a new folder on the local disk. Do not use the Toolkit files on a CD-Rom.
4. Install Catalyst (see section 3 at p.12).
5. If you have any previous MM8000 Catalyst localisation, restore and update (leverage) the older texts (see 3.2.2 at p.17).
6. Localise MM8000 system: in case of first localisation, create a new TTK file ('MM8000 MP 4.20 ENG.ttk' → 'MM8000 MP 4.20 XXX.ttk').
7. Extract MM8000 texts and generate DLL files<sup>1</sup> (see 3.2.3 at p.17).
8. If you have any previous Catalyst localisation for the Composer models, restore and update (leverage) the older texts (see 3.2.2 at p.17).
9. Localise Composer models: in case of first localisation, create a new TTK file ('MM8000 MP4.20 - Subsystem Tools ENG.ttk' → 'MM8000 MP4.20 - Subsystem Tools XXX.ttk').
10. Extract Composer models texts and generate DLL files (see 3.2.3 at p.17).
11. If you have any previous Catalyst localisation for the help system, restore and update (leverage) the older texts (see 3.2.2 at p.17).
12. Localise on-line help texts: in case of first localisation, create a new TTK file ('MM8000 MP4.20 - Help System ENG.ttk' → 'MM8000 MP4.20 - Help System XXX.ttk').
13. Localise the XML-DB texts (see section 4 at p.18).
14. Create the LANG-xxx.ZIP file (see Tab.1-F at p. 9).
15. Install the language files (<installation folder>\Utilities\Language installation\Language installation.exe)
16. Localise the default project (see 5.1 at p. 28).
17. If necessary, localise the Pager and/or SMS character sets (see 6.1 at p.30)
18. Translate the on-line help pages (see 7.1 at p.31).
19. Create the LANG-xxx:ZIP file (see Tab.1-F at p. 9).
20. Install the language files (<installation folder >\Utilities\Language installation\Language installation.exe)
21. Prepare a new MM8000 project in Composer.
22. Download the project.
23. Run the localised MM8000.

---

<sup>1</sup> Licensed Catalyst edition is required for exporting texts into DLLs (see 3.1 at p. 12).

- 24.** Test the localised software and possibly repeat the steps 6 to 21 above for refining the localisation.
- 25.** Send to FS DMS support the final localised toolkit.
- 26.** The LANG-xxx.ZIP file can be added to the MM8000 setup CD for installing the localised texts along with software in the program installation.

## 3 Localising texts using Catalyst

---

This section is a guide for the localisation activities using Alchemy Catalyst.

### 3.1 Catalyst overview

---

#### Alchemy Catalyst

Catalyst is an integrated translation environment by Alchemy Software (<http://www.alchemysoftware.ie/>). This application can extract (import) the texts from EXE and DLL files, and create a database file (TTK) that can be used for a comfortable translation, assisted by a guided interface and management tools.

When ready, translated texts can then be exported back to DLL/EXE files, which can be installed on a computer for testing the localised software application.

#### Catalyst editions

Catalyst is available in 4 different editions (see also the Catalyst product list in <http://www.alchemysoftware.ie/products/productline.html>). These editions are:

- Catalyst **Translator/Lite Edition** (previously called **Quickship**)  
Included in the MM8000 localisation toolkit, this edition allows for translating the TTK text databases, but not for exporting texts into DLL and testing the localised MM8000. In order to check the results it is necessary to ship the TTK files to FS DMS support and wait for the exported DLL files.  
→ Catalyst Quickship V4.0 can be downloaded at:  
<http://www.alchemysoftware.ie/quickship/>.
- Catalyst **Translator**  
This edition is not included in the MM8000 toolkit, but is available for a moderate charge. This software enables you to translate the TTK text databases, to export texts into DLL, and to test the localised MM8000.
- Catalyst **Localiser**  
In addition to what is available in the Translator edition, the Localiser provides more advanced tools for easy update of text versions, and more powerful tools for text activity management.
- Catalyst **Developer/Pro**  
This edition also supports tools for creating Quickship TTK databases.



---

#### Important notes:

- It is recommended to use the *Translator or Localiser* edition of Catalyst. Using Quickship (at no cost) will not permit you to immediately verify the localised software, and you will end up in a long and costly localisation process.
  - Note that, starting from version 5, Catalyst software requires a license code that can be requested via e-mail to the Catalyst support.
  - Catalyst V4, V5, V6, and V7 can be used. For each version, **we recommend you to install the latest Service Release available on the web site** <http://www.alchemysoftware.ie>.
-

## Training on Catalyst

Using Catalyst software is quite simple. Before using it extensively however, we recommend that you run some training sessions (Web-based lessons). These are available on the Internet at: <http://www.alchemysoftware.ie/tutorials/index.html>.

## 3.2 Localising MM8000 texts with Catalyst

### Catalyst Text Translation Kits (TTK)

The MM8000 localisation items (texts, graphic symbols, and so on) are organised in the following TTK files:

- MM8000 MP 4.20 xxx.ttk (system texts).
- MM8000 MP 4.20 - Subsystem Tools xxx.ttk (configuration tool models).
- MM8000 MP 4.20 - Help System xxx.ttk (on-line help)

Note: 'xxx' indicates the target language; English (ENG) is always available for reference.

### 3.2.1 Basic Catalyst instructions

For both TTK files (system texts and configuration tool models, see above), proceed as follows:

#### Create your own TTK files

In Catalyst, open (File → Open) the original TTK file ('...ENG.ttk') and saves it (File → Save as) in the same folder with a new name. We recommend the use the same name, only replacing the ENG code with your own language code (e.g.: FRE for French, SWE for, Swedish, etc.). See Fig. 3.

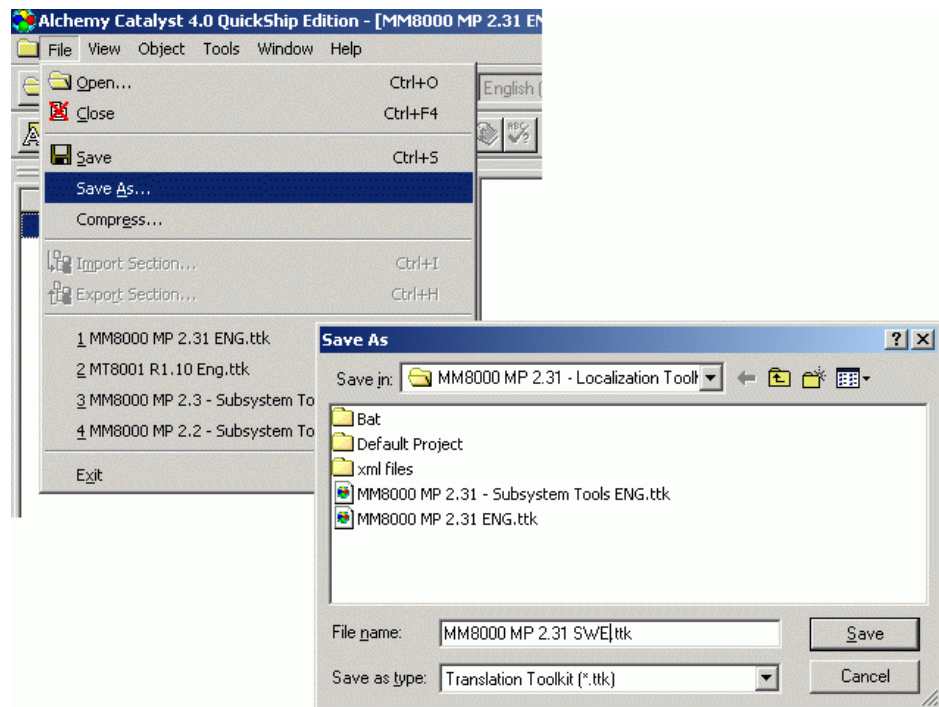


Fig. 3 Save the renamed TTK project

### Set target language

If you are running the Licensed Catalyst edition, then select your target language: (see Fig. 4). This is not required in the Quickship edition.



Fig. 4 Target language setting

### Navigation tree

Open the navigation tree as indicated in Fig. 5.

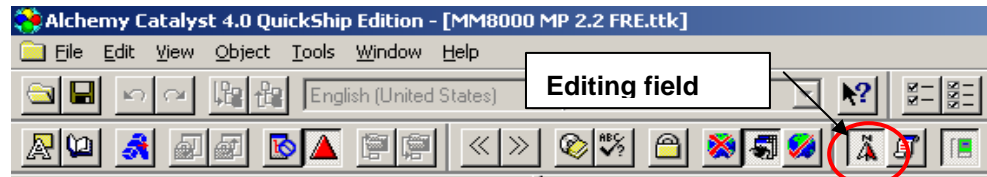


Fig. 5 Open the navigation tree

This results in a tree view being displayed on the left hand side (see Fig. 6), showing a number of resource groups. The ones indicated by the priority sign (a red triangle '▲') have to be translated.

- Texts marked with the symbol 'Ⓞ' (reserved) must not be localised, please ignore them. Note also that the symbol may be removed and the associated text (or value) modified; you should not do that!
- Texts marked with the symbol '🔒' (locked) must not be localised either, please ignore them. Note also that the symbol may be removed and the associated text (or value) modified; you should not do that!

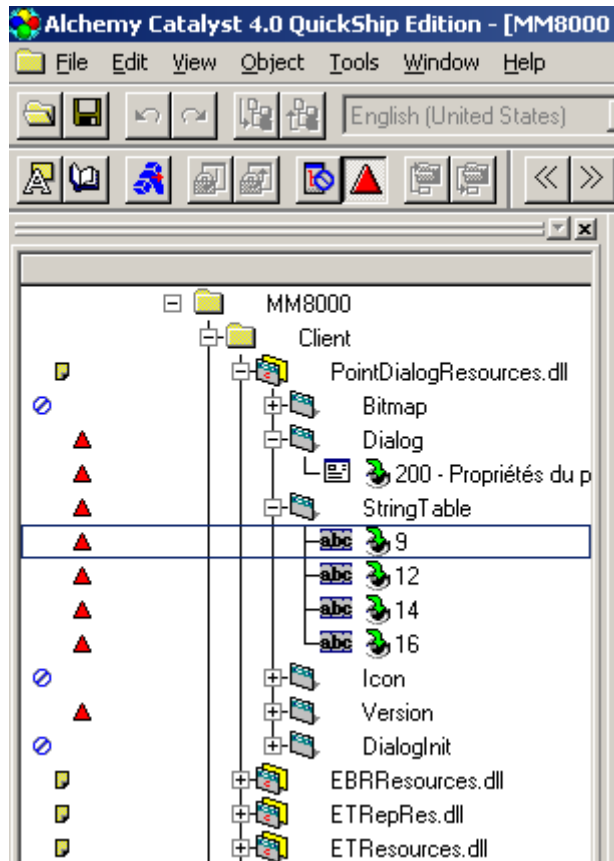


Fig. 6 Tree view in Catalyst

### Translating text strings

Select the group in the tree, and translate the individual text strings that display on the right hand side of the screen (see Fig. 7 below).

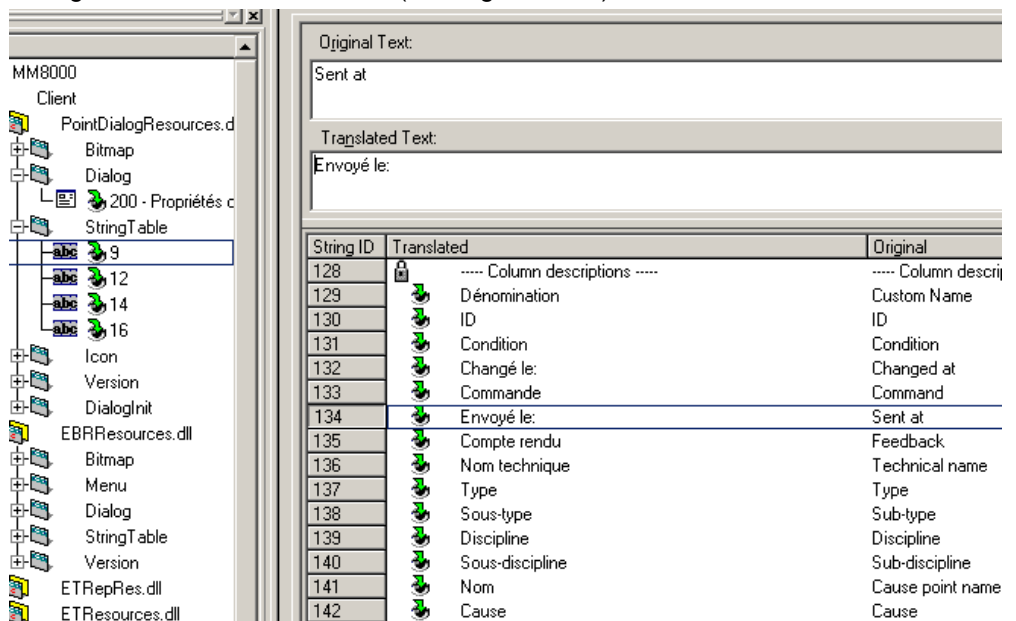


Fig. 7 Translating text strings

### How to use the spelling checker

1. Choose Tools → Options → the General tab from the Catalyst menu.
2. Select your language under the Dictionary dropdown.

**Note:** You should also select 'Perform auto checking' and 'Hotkey aware', as these options will notify you if you misspell a word while you are working, and will ignore ampersands (&) when spellchecking.

3. Select 'OK'.

- To quickly correct any misspellings while translating, click Edit → QuickSpell, or press F3 to display a list of suggested corrections. Double-click a correction to replace the misspelling with the selected correction.
- To check the spelling of a text string, click Edit → Spell Check, or press F4.

### How to use a technical glossary

1. Choose Tools → Options → General from the menu.
2. Select the 'Glossary' tab within the Options property sheet.
3. Check the box beside 'Glossary 1' and select the glossary you wish to use.

**Note:** You can attach two glossaries, and you have the option to suggest from the TTK you are currently working in. You also have the option to select 'Update glossary file with (TTK) translations on close of (TTK) file'. This will add new translations in your TTK to your glossary file each time you close the TTK.

While translating or editing, to ensure correct and consistent terminology for your translations, click Edit → Glossary, or press F2 to look up recommended translation suggestions while translating or editing text strings in objects

### Localisation of menus and dialogs

Menus and dialog windows can be translated in WYSIWYG mode ('What You See Is What You Get'). The menu and the windows display exactly as they would appear in the software application when viewed by a user (and can be adjusted). Just press F7 or the button shown in Fig. 8.

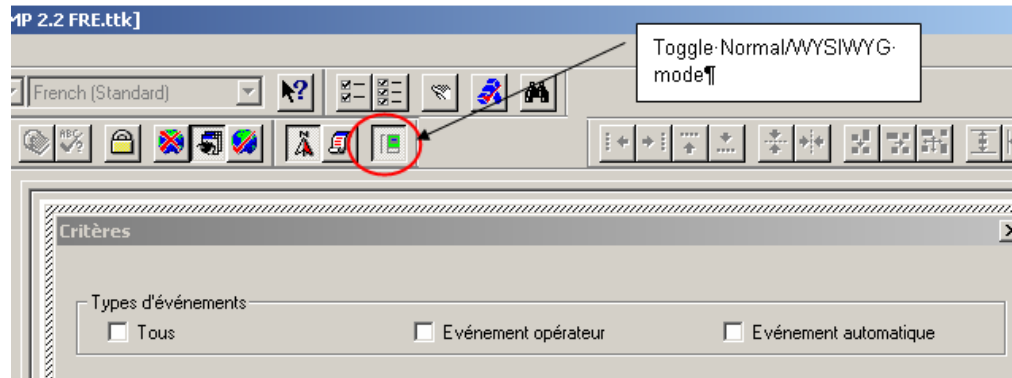


Fig. 8 Using WYSIWYG mode

### How to enable automatic translation (replica option)

1. Choose Tools → Options → CATALYST Experts from the menu.
2. Select the 'Replica' tab within the Expert Options property sheet.
3. Check the box beside 'Enable Replication' and select 'Interactive Replication'.

**Note:** Whenever you translate a text, the software will check whether the same string is present in another position and propose a multiple translation.



### 3.2.2 Updating texts from previous MM8000 release

---

Use the Leverage Expert to update the texts. Note that you will need the licensed edition of Catalyst. Proceed as follows:

1. Start Catalyst.
2. Open the new 4.20 TTK in English.
3. Start the Leverage Expert command.
4. Select the previous TTK database in your own language.
5. Catalyst imports the older texts, leaving the new ones in English.

### 3.2.3 Extracting texts

---

This step is required to extract the localised texts and store them in the runtime DLL files replacing the original English texts.

Note that only the licensed editions of Catalyst are enabled to extract texts and updating DLL files

The charged editions of Catalyst also allow you to export the translated texts into the run-time DLL files. To export texts, do the following:

1. Select the top node on the tree.
2. Choose File → Extract section from the menu.

The destination directory should be the localisation folder. A set of localised DLL files will then be created in the toolkit folder, ready to be compressed into the language installation file.

→ The language installation file (ZIP file) is created by the program described in the Tab.1-F at p. 9.

## 4 Localising point properties using XML Editor

This section deals with the localisation of the MM8000 point properties, contained in the XML database (XML-DB).

### 4.1 XML-DB

The XML-DB database is made up of several files that contain the models of the point representation of each control unit.

### 4.2 XML Editor

With the XML Editor, you can open the entire set of files and modify the text and icon information.

#### 4.2.1 Launching the editor

##### Starting XML Editor for localisation

You start the XML Editor launching 'MM8000 XML Editor.exe' from the Localisation toolkit folder (see Tab.1-K at p. 9).

**Note:** the program must run under an account with administration rights.



When launched, the program takes a while before showing up on the screen.

#### 4.2.2 Working with the editor

##### XML Editor menu

The XML Editor provides a Windows-standard interface. The main menu and the toolbar are illustrated in Fig. 9.

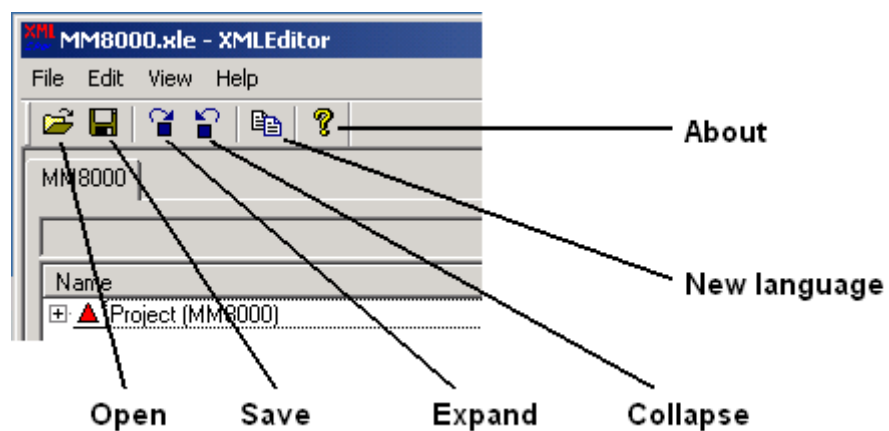








Fig. 9 XML Editor interface

The command list in the XML Editor menu includes:

Selection ...		Toolbar	Command
File →	Open		Open XML-DB
	Save		Save information into XML-DB
	Import old XML	-	Import the localised XML-DB from a previous MM8000 release. That will be automatically updated to latest release.
	New localised language		Copy the original XML-DB into a new database, thus creating a new language.
	<i>Backup</i>	-	Compress and save the XML-DB (available for MT8001 only)
	<i>Restore</i>	-	Uncompress and load the XML-DB (available for MT8001 only)
	Exit	-	Quit XML Editor
Edit →	Expand		Expand the sub-tree whose root is the selected node
	Collapse		Collapse the sub-tree whose root is the selected node
	Replace	-	Replace a text through the entire database
	Extended replace	-	Replace a text through a selected part of the database
	Find		Find a text in the database
View →	Toolbar	-	Enable the toolbar, just below the menu.
Help →	About XMLEditor		Show the 'About' window

### XML Editor Project Tabs

The XML Editor is organised project tabs. The MM8000 Tab (Fig. 10) contains a project tree including all the control units and the associated Data Points.

Each point can include the following items:

- Symbol ID: the associated graphic symbol number.
- Physical properties: texts describing the physical conditions of the point.
- Virtual properties: texts describing the calculated conditions of the point.
- Transaction properties: texts describing the transactions related to the point.

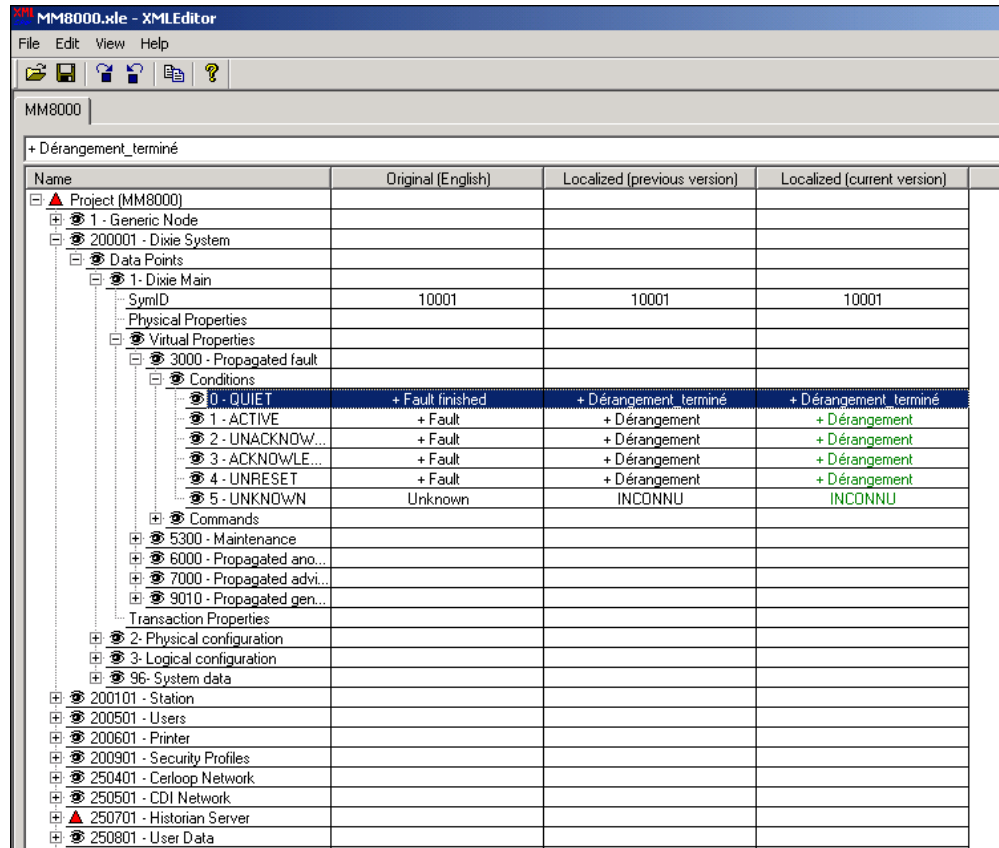


Fig. 10 XML Editor: MM8000 project tab and project tree

Information on the screen is split up in four active columns, shown in white background, which contains the following:

Title	Contents
Name	For both Virtual and Physical Properties, this column lists the properties and, for each of them, its conditions and commands. Instead, in the Data Points tab, the subsystem list is given. Each subsystem includes the affiliated data points. In this column, a special icon (▲) shows up next to the name when the value has not been modified yet; then, after the translation, a new icon is used (⚙) to indicate that a final revision is required. The icon can be cleared by right clicking the line, and then selecting the command 'Icon reset'.
Original (English)	Here the original property text in English is shown. This text cannot be edited. In case of Data Points, the original icon number is shown.
Localised (previous version)	This column is only used when a previous XML-DB release is imported. In this case, the previous text (or icon number) is reported here. This value cannot be edited and it is shown for reference only.
Localised (current version)	This column contains the localised texts (or icons) that, initially in English, are progressively translated. You can edit the text field in two ways: 1) Individually: select the line and then the field in this column (use a single click). At that point, you can replace or modify the field and then press Enter to

confirm (see Fig. 11).

2) Sequentially: select the line (first mouse click) and then click on the editing field just below the menu and the toolbar (see Fig. 12).

At that point, you can replace or modify the field and then press Enter to confirm. The program automatically moves to the next line and select the text field for editing.

Localised value is shown in green colour instead of black.

**Note:** Some texts are preceded by a plus sign (+), indicating that the condition is inherited from affiliated nodes (e.g. element exclusions propagated to the parent zone). In the translation, you can keep or change that type of sign.

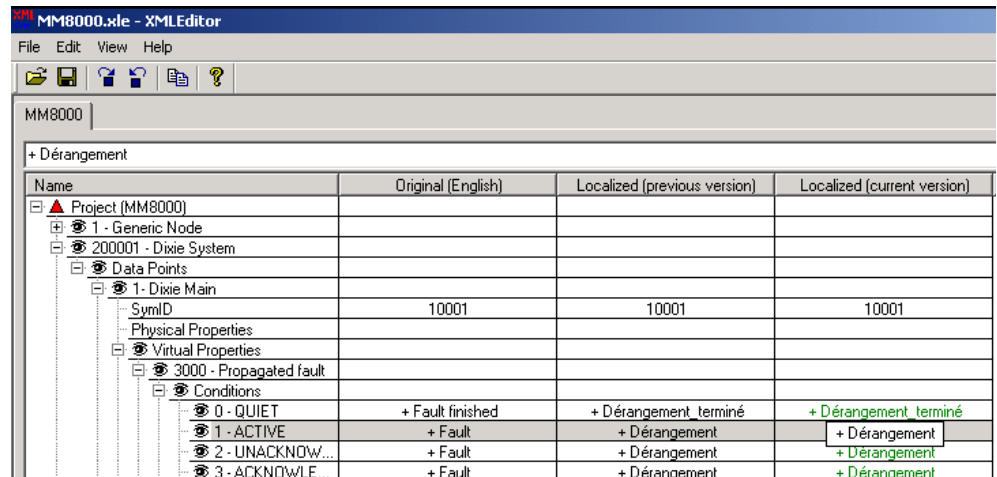


Fig. 11 Individual text editing

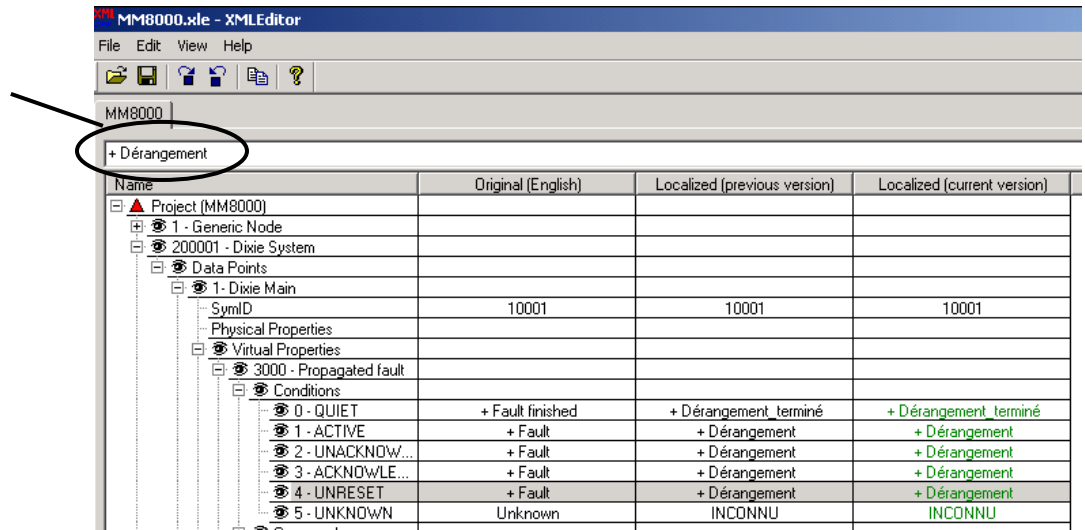


Fig. 12 Sequential text editing

### 4.2.3 Creating a new language

When starting a new localisation, you first have to copy the original XML-DB into a new database. Use the 'New localised language' command and, when prompted, confirm it.

This command results in the 'Localised (current version)' column being populated by texts, which are initially the same as the original English. Also, all items are marked with the 'not-translated-yet' sign (▲). See Fig. 13.

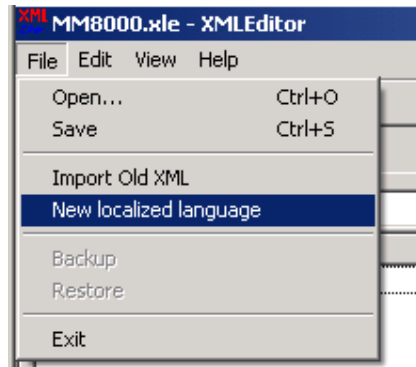


Fig. 13 Select 'New localised language' to start a new localisation

### 4.2.4 Translating Properties texts

The property texts are included in three sets of nodes: Virtual Properties, Physical Properties, and Transaction Properties.

#### Virtual, Physical, and Transaction Properties

The *Virtual Properties* (formerly called Common Properties or CP) represent the calculated conditions of the safety and security objects as determined by MM8000 out of the physical conditions. The virtual condition calculation is based on algorithms both local to each object and propagating the virtual conditions along the structure tree.

The *Physical Properties* (formerly called Local Properties or LP) represent the individual conditions of the safety and security objects as mapped in the MM8000 database out of the incoming status messages. For each of them, the list of conditions, as well as the command texts should be translated.

For each Virtual and Physical Property, the text of both *conditions* and *commands* should be translated.

The *Transaction Properties* represent the individual occurrences related to Access Control (e.g. access granted). For each of them, a single text should be translated.



If you do not need a complete translation, you may limit the localisation to the properties related to the control units and data points that you actually require.

#### Translation checklist

To translate texts, you have to:

1. Select the first numbered property in the Name column.

2. Expand the sub-tree to show condition texts.
3. Select the first condition clicking on the line.
4. Press F2 or click the text in the 'Localised (current version)' column (individual editing, Fig. 11)  
-- or --  
click the editing field (sequential editing, Fig. 12).
5. Translate the text and confirm with Enter (Fig. 14).
6. Translate all conditions, repeating steps 3 to 5 for the other conditions.
7. Translate all commands, repeating steps 2 to 6 for all the commands.
8. Translate all properties, repeating steps 1 to 7 for all the properties.

30- Burglary zone			
31- Door monitor zone			
SymID	10404	10404	10404
Physical Properties			
Virtual Properties			
203 - Burglary alarm			
2005 - Tamper			
5005 - Disconnection			
5300 - Maintenance			
6005 - Anomaly			
7014 - Locked			
7018 - Bolt Open			
Conditions			
0 - QUIET	Bolt Open finished		Bolt Open finished
1 - ACTIVE	Bolt Open		Bolt Open
2 - UNACKNOW...	Bolt Open		Bolt Open
3 - ACKNOWLE...	Bolt Open		Bolt Open
4 - UNRESET	Bolt Open		Bolt Open
5 - UNKNOWN	Unknown		Unknown
Commands			

Fig. 14 Editing text

### The Replace command

Most of the XML-DB fields actually contain the very same texts (e.g. Alarm, Fault, etc.). Therefore, the global replacement function offers a powerful way to translate the entire database quickly and consistently.

Just start the command 'Edit → Replace' and then fill in the window that shows up (Fig. 15). You can first try a single substitution (Replace) and then operate globally (Replace All).

30- Burglary zone			
31- Door monitor zone			
SymID	10404	10404	10404
Physical Properties			
Virtual Properties			
203 - Burglary alarm			
2005 - Tamper			
5005 - Disconnection			
5300 - Maintenance			
6005 - Anomaly			
7014 - Locked			
7018 - Bolt Open			
Conditions			
0 - QUIET	Bolt Open finished		Pêne fermé
1 - ACTIVE	Bolt Open		Bolt Open
2 - UNACKNOW...	Bolt Open		Bolt Open
3 - ACKNOWLE...	Bolt Open		Bolt Open
4 - UNRESET	Bolt Open		Bolt Open
5 - UNKNOWN	Unknown		Unknown
Commands			
12005 - Test			
19000 - Test alarm			
Transaction Properties			
32- Hold-up zone			
33- Theft zone			
34- Duress zone			
35- Automatic fire zone			
36- Manual fire zone			
38- Building service zone			
39- User			
40- Time program			

Fig. 15 Filling in the Replace window

### The Extended Replace command

This command allows for selected replacing based on various criteria:

- **Object type:** Text or SymbolID (the latter only for icons)
- **Find What/Replace With:** searching and replace texts or values
- **Scope** includes various options:
  - Subsystem and Data Point: these fields allow you to limit the replacement action to a Subsystem type or to a Data Point type of a subsystem
  - Virtual / Physical / Transaction Properties: these fields allow you to limit the replacement action to a property type only. The options available in the drop-down lists depend on the Subsystem and Data Point selection.
  - Causes/Conditions and Commands: these fields allow you to limit the replacement action to specific status or command texts.

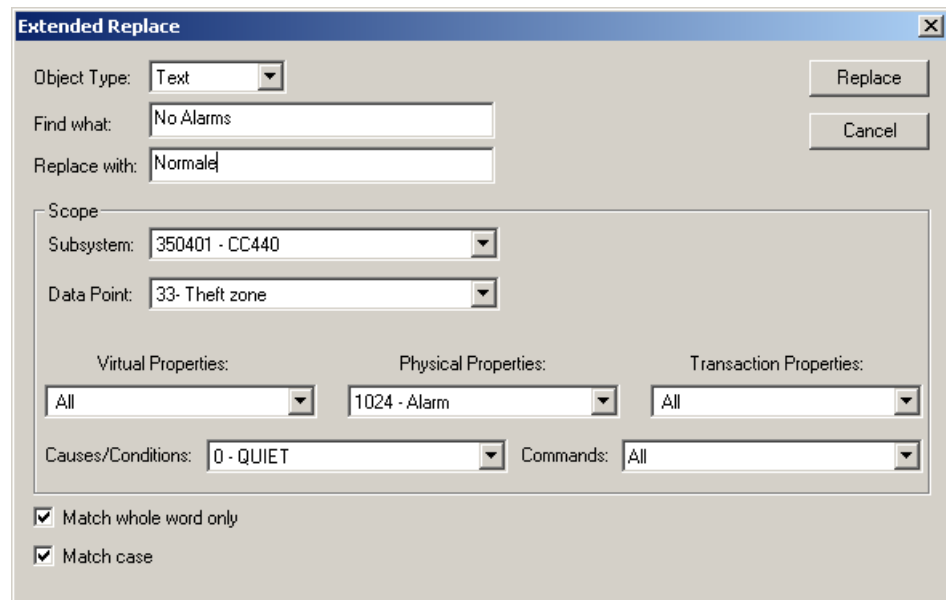


Fig. 16 Extended Replace window



## 4.2.5 Localising Data Point Icons

The Symbol ID items do not contain any text to translate and might even be ignored during the first steps of localisation. However, later on, it may turn out to be useful for modifying the icon associated to the data point. Although the icons may be customised for each project in Composer, the possibility to change some of them here allows defining general icons that will then apply to all the subsequent projects.



Note that these icons will appear in the MM8000 pages and graphic maps whenever the associated Data Point is shown. They are also used by Composer in the system structure tree.

The user interface for this function is very much the same as for the property texts. Data Points are organised in groups related to the type of units or subsystems. You will have to expand each of them, select the line and then click and modify the value in the 'Localised (current version)' column.

### Icon localisation checklist

To localise icons, you have to:

1. Select a group in the Name column.
2. Expand the sub-tree and select a Data Point.
3. Select the line named 'Symbol ID'.
4. Click on the value in the 'Localised (current version)' column.
5. Select the new icon (Fig. 17).
6. Repeating the steps above for any other icon.

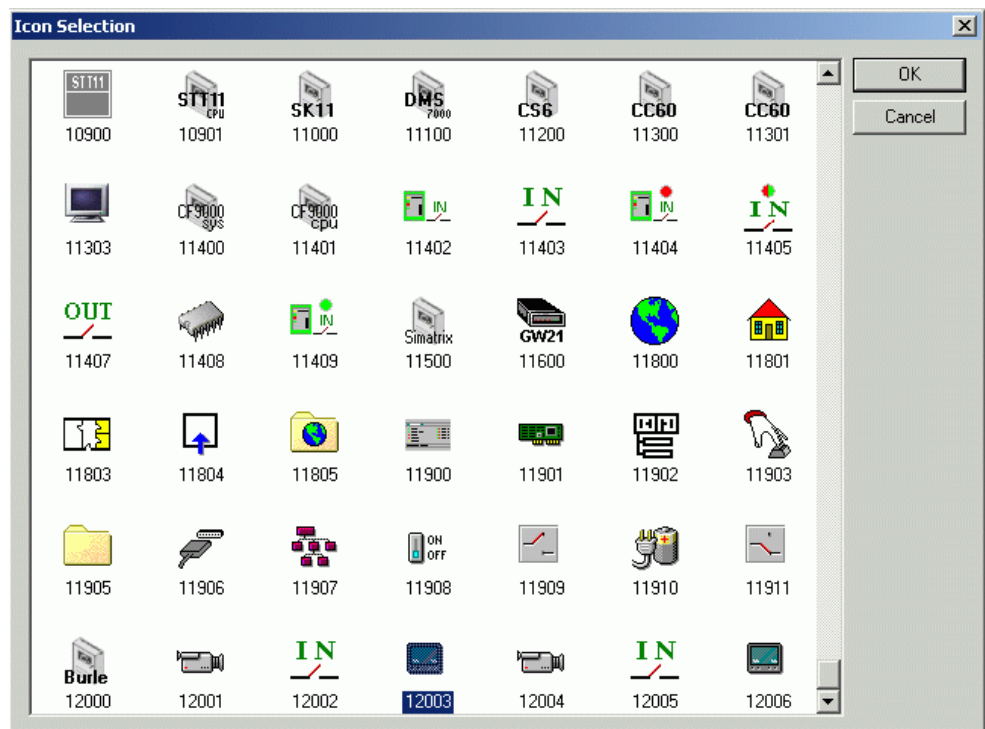


Fig. 17 Selecting a new icon

### 4.2.6 Importing XML-DB from previous MM8000 release

XML files from previous versions can be restored into latest XML editor and then integrated with the translation of new texts.

Use the editor command File → Import old XML-DB, then browse in the file system and select the folder containing the previous XML-DB (the folder must include the 3.x files CPS.xml, LPS.xml, NodeTypes.xml, and TPS.xml). See Fig. 18 and Fig. 19.

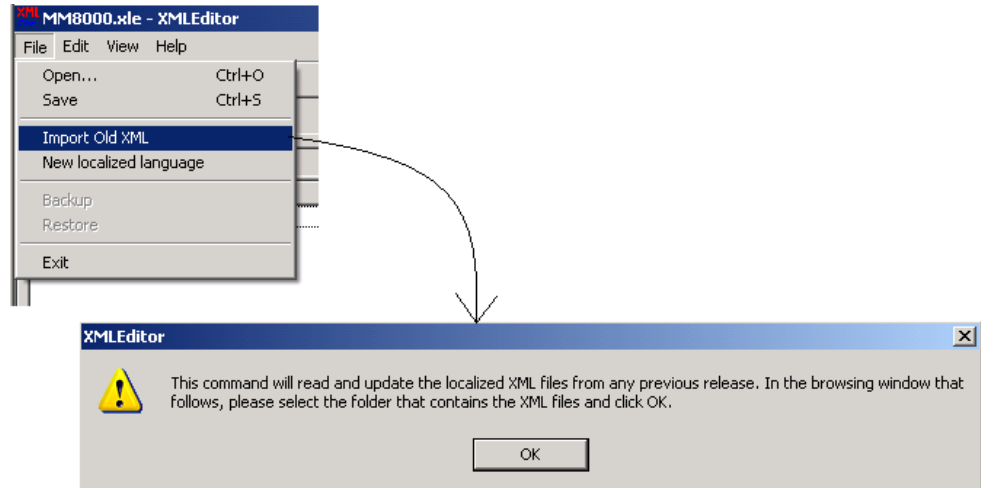


Fig. 18 Starting import procedure

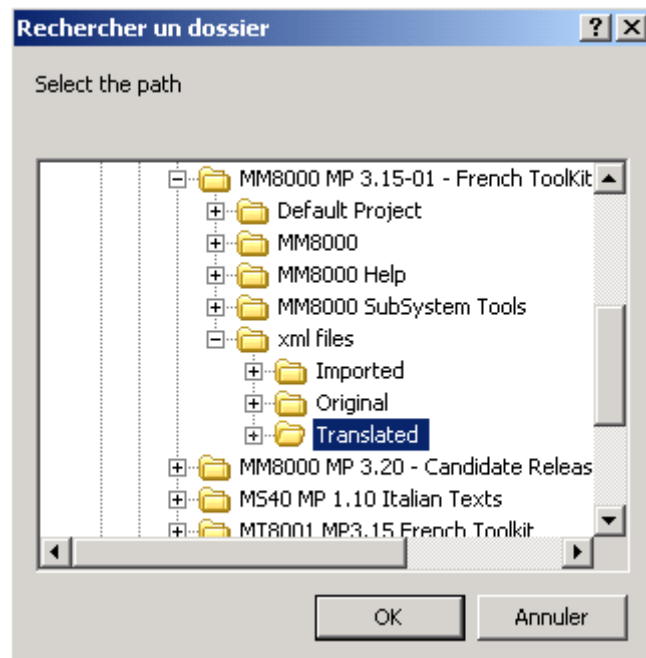


Fig. 19 Selecting folder containing old XML files

The import procedure will then process the old database and port it into the new files. Old texts are shown in the central column 'Localised (previous version)' and

also copied in the 'Localised (current version)' as much as possible. New texts that are missing in the previous release are taken from the original database in English.

#### 4.2.7 Save localised XML-DB and leave editor

---

You can close the XML editor by selecting File → Exit. There is no risk you can lose the data you just entered: upon terminating the program, a window displays like the one shown in Fig. 20.

If you want to save the changes to the XML-DB, click 'Yes'; instead, if you want to discard the latest modifications, select 'No'. Clicking 'Cancel' results in aborting the program termination and in the editor remaining active.

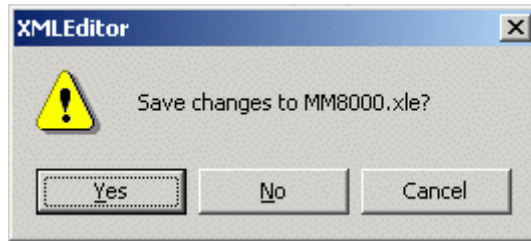


Fig. 20 Save XML-DB files

## 5 Default project

---

This section tells you how to localise your *default project*, which is used as starting point for any new MM8000 project.

### 5.1 Localisation of MM8000 default project

---

#### Default project file

The file **Default.bak** contains the project structure that is presented whenever a new project is created (see Fig. 1, at p. 8). In order to simplify the creation of a new MM8000 system, the default project already includes a number of standard objects.

After the translation and the installation of texts, you can prepare a localised project, and add any customisation you may want to use. You do this using the Composer tools.

When the project is ready, make a backup copy and rename the resulting 'xxx.BAK' file into the 'default.bak' file of the localisation toolkit. Then, run the 'MM8000 Build ZIP File' utility to include the default project in the installation kit.

#### Default project localisation checklist

1. Ensure you have localised the XML-DB (see section 4, at p. 18), created the LANG-xxx:ZIP file and then installed the text using the 'Language installation' utility (see checklist in 2.4 at p.10).
2. Set Composer in Debug mode:  
Launch the utility 'ST\_DebugYes.reg' available in the folder <Installation folder>\Utilities\Reg.
3. Start Composer and Restore<sup>2</sup> the standard default project included in the '*...MM8000 MP 3.20 - Localisation ToolKit\Default Project\Default.bak*'.  
Alternatively, you may want restore the Default.bak project that you have customised for the previous MM8000 version and that you want now to port into the new market package. In this case, you also need to run the 'Project Update' in the 'User data' node (Supervision System Settings → MM8000 System → Logical Configuration → User Data).  
More information on the configuration update from previous versions is given in the MM8000 Release Notes.
4. Select the 'User data' node (Supervision System Settings → MM8000 System → Logical Configuration → User Data) and, in the Node tab, launch the 'Language Update' command (see Fig. 21-A).  
→ This command will import the localised texts into the project.
5. Select the 'Security' node and reset to zero the parameter 'Initflag' that appears in the 'Children' grid (see Fig. 22-A).  
Note: You may have to scroll the grid list to the right until you reach the 'Initflag' field. For easier operations, you can also select a limited number of columns: right-click on the property page and enable the desired columns in the 'Properties' dialog.  
→ Setting the Initflag to zero will result in the default project setting the current

---

<sup>2</sup> The Composer Restore (as well as Backup) operation only works on local disk drives. Do not use network drives.

domain (as MM8000 security domain) and user name (as MM8000 administrator) when it will be opened.

6. Translate texts of the MM8000 objects.  
Note: Under the Security – Users - Domain node, the default User Groups should not be removed.
7. Customise the project adding folders, standard maps, users and so on.
8. Backup the project and close Composer.
9. Copy the project backup (the BAK file you just saved) in the 'Default Project' folder of the localisation tool kit. Then, delete the previous default.bak file and rename the latest backup into default.bak.
10. Set Composer back in standard operation mode:  
Launch the utility ST\_DebugNo.reg, available in the folder <Installation-Dir>\Utilities\Reg.

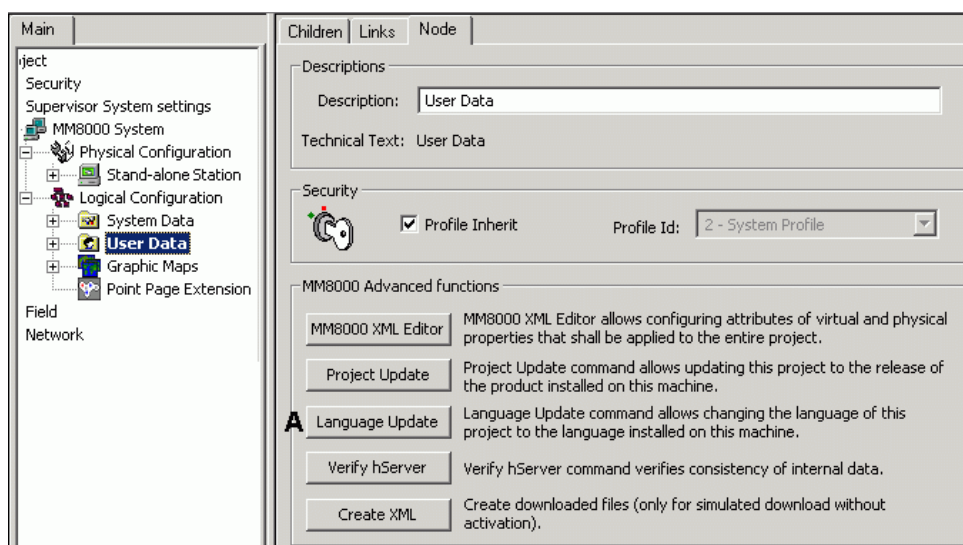


Fig. 21 Language Update (A) for default project

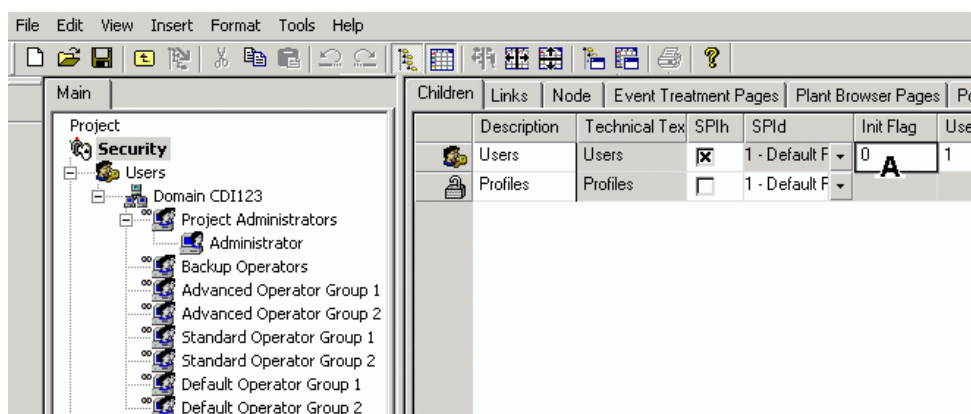


Fig. 22 Setting Initflag (A)

## 6 Further customisation activities

### 6.1 GSM and Pager character set

---

GSM and Pager devices usually handle an 8-bit character set that can create difficulties in relation with some national characters.

In order to address this problem, the MM8000 localisation kit includes two simple MS-Access files: **Ucs2Gsm.mdb** and **Ucs2Pager.mdb** (related to SMS and Pager, respectively) in order to provide the possibility to customise any number of characters in the set applied in SMS or Pager messages.

Both files are located in the "<installation folder>\Server" subfolder and contain a data table organised in 2 columns named:

- **UCS** (Unicode Character Set) and **GMS**
- **UCS** (Unicode Character Set) and **Pager**



Microsoft Access 2000 is required to open and modify the files. You can also use a more recent version of MS-Access software, in that case, however, pay attention not to modify the general data structure.

---

The characters that require a customised conversion must be present in the table both as Unicode and as the corresponding GMS/Pager code. Please refer to the GSM/Pager device documentation.

In case of problem, we recommend you to contact FS DMS customer support.

## 7 On-line help files

---

This section tells you how to localise the on-line help files, a set of compiled HTML files (CHM) that contain the texts provided to the MM8000 operators when they ask for help in the main menu or by pressing F1.

A Catalyst TTK is provided for the localisation of help texts, which share large part of contents with the MM8000 Operation Manual (the use of a Translation memory system is recommended to share the translation texts as well).

### 7.1 Localisation of MM8000 on-line help

---

MM8000 help is based on Microsoft HTML Help, the standard help system for the Windows platform. The MM8000 on-line help files are provided in the localisation toolkit in the **MM8000 Help** folder (see Tab.1-C at p. 9). The list of files translated and then exported by Catalyst includes:

#	Subfolder	Name	Contents	Type
1	01 Definition Of Terms\EventBar-01\	Index.htm	Introduction page	HTML
2	01 Definition Of Terms\EventBar-01\	EventBar-01.chm	Analytical index	CHM
3	02 Getting To Know\ PlantBrowser-02\	PlantBrowser-02.chm	Guide to the system	CHM
4	03 Open And Close\EventBar-03\	EventBar-03.chm	Login, Logout, and other operator tasks	CHM
5	04 Procedures\EventBar-04\	EventBar-04.chm	Treating an event	CHM
6	04 Procedures\PlantBrowser-04\	PlantBrowser-04.chm	Browsers operations	CHM

Siemens Switzerland Ltd  
Building Technologies Group  
International Headquarters  
Fire Safety & Security Products  
Gubelstrasse 22  
CH-6301 Zug  
Tel +41 41 724 24 24  
Fax +41 41 724 35 22  
[www.sbt.siemens.com](http://www.sbt.siemens.com)

---

Document no. **A6V10062459\_a\_en**  
Edition 06.2009

MM8000 Technical Material  
Section 8