

5.1 How to modify / define Scheduler elements

Modify calendar day type:

1. Select a date in the calendar and select the drop-down arrow to change day type.
2. Select **Yes** to confirm the change.

Modify organisation mode or time program start times:

Note: For organisation modes, you cannot modify the initial start time – only successive start times; for time programs, scheduled execution time must be a specific time of day.

1. Select a date in the calendar.
2. **Organisation modes:** Double-click on the start time you want to change.
Time programs: Double-click in the **Modified execution time** field.
3. Enter new start time in format hh.mm (based on 24-hour clock).
4. Click anywhere on the screen.
5. Select **Yes** to confirm the change.

Define a scheduled task:

1. Select the **Scheduled Tasks** folder in the tree.
2. Select the **Add New** icon located left of the tree.
3. Select the new task node in the tree.
4. Select the **Set task in edit mode** icon located left of the schedule task window.
5. Select when you want the task to occur using the drop-down arrows.
6. Select the **Add Point** button to add a point to the Point List.
7. Drag and drop the points you want included in the task from the Plant Browser tree to the Point List in the lower part of the task window.
8. Select the **Add Action** button.
9. Select a command and time setting for the action and select **OK**.
10. Repeat steps 8 – 9 for all other actions in the task.
11. Save the task by selecting the **Save changes** icon.
12. Select the **Make operative** icon.

Define a manual task:

1. Select the **Manual Tasks** folder in the tree.
2. Follow steps 2 – 4 above for defining a scheduled task.
3. Select the **Add Point** button to add a point to the Point List.
4. Drag and drop the points you want included in the task from the Plant Browser tree to the Point List in the lower part of the task window.
5. Select the first command from the drop-down list to be executed when you start the countdown.
6. Specify the amount of time to pass in the format hh:mm (countdown timer) before you want the second command executed.
7. Specify the second command to be executed when the countdown has expired.
8. Save the task by selecting the **Save changes** icon.

– Start a manual task by selecting the **Start countdown** icon.

Note: For details on manipulating scheduled and manual tasks, see the Operation Manual.

Siemens Switzerland Ltd
Building Technologies Group
International Headquarters
Fire Safety & Security Products
Gubelstrasse 22
CH-6301 Zug

Document no. **A6V10067779_a_en**
Edition 06.2009

Tel +41 41 724 24 24
Fax +41 41 724 35 22
www.sbt.siemens.com

MM8000 Technical Material
Section 6

SIEMENS



MM8000 Management Station MP4.20 Operation

Quick Reference Guide

Building Technologies

Fire Safety & Security Products

1 Event summary bar

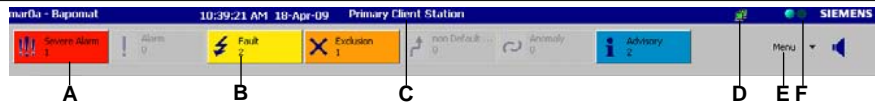


Fig. 1 Event summary bar

- A Event counter.
- B Number of current events in event category.
- C Station indicator – indicates whether station is primary/secondary client (configurable).
- D Alignment – click to display communication between MM8000 and control units.
- E Menu – select drop-down list to access system features to perform tasks.
- F System status – system is active when flashing green (software functioning properly).


2 Event treatment

Treat events in the Event list in either fast or assisted treatment mode.

Note: Assisted treatment only available if configured.



Fig. 2 Event list

Note: To print the Event list (filtered / unfiltered) select the **Print** icon .

- A Event icon. Single-click to go to *fast* treatment. Double-click to go to *assisted* treatment.
- B Source causing the event.
- C Action to take.
- D Event location.

2.1 Fast treatment / Event icon appearance (what it tells you)

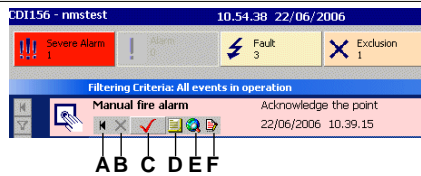















Fig. 3 Fast treatment window

Select this icon:	To:	Icon Background Display	Example	Status
A	Suspend the event	Background grey – top corner flashing from dark to light		Event not noticed
B	Close the event	Background grey – top corner not flashing		No action required
C	Acknowledge the event	Background solid light – not flashing		Event being treated
D	Display the point properties page			
E	Display the Plant Browser			
F	Attach a note to the event			

4.1 Important History Browser icons

Icon:	What it does:
	Clear fields resets query information to be contained in a report to <i>All</i> .
	Generates a report based on the parameters specified in the query. Note: Limit 10,000 registrations.
	Generates a report for export only – no size limit.
	Exports an open report in .csv file format to a user-specified location.
	Resets columns to the default report layout.
	Displays the query that generated a saved report. Note: The saved report must be open for this icon to be active.
	Displays child registrations of a parent registration that occurred after the end time parameter of a report query. → For details, see MM8000 Operation Manual.
	Opens the attachment associated with a selected registration.
	Archives the current database (all registrations) in .bak file format to a user-specified location. This action returns database saturation level to 0.
	Retrieves and restores a user-specified archived file to the database. Note: Limited to one restored file only. Select the Management tab to delete any existing restored file before attempting to restore a new archive.

5 Scheduler

To access the Scheduler: Select **Menu > Browsers > Scheduler** from the summary bar.

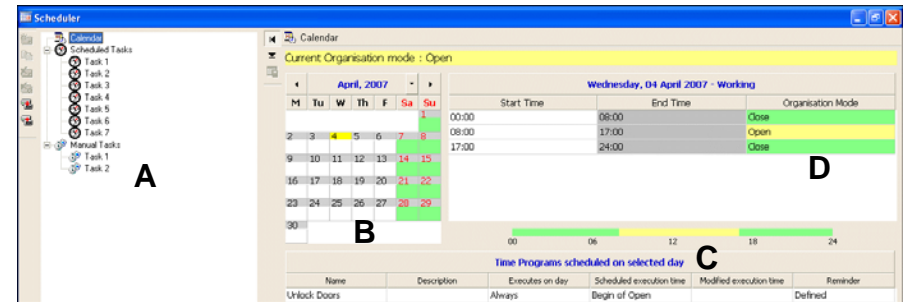


Fig. 8 Scheduler

- A Tree view displaying Scheduled and Manual tasks.
- B Calendar displaying day types.
Note: After launching the Scheduler, highlighted day is current date.
- C List of time programs, if any, with possible reminders for selected date.
- D Organisation modes for selected date.

4 History Browser

To access the History Browser: Select **Menu > Browsers > History Browser** from the summary bar.

There are three views in the History Browser. (Select the appropriate tab to change views.):

- *Query view*: Displays the parameters to select from in order to generate a report
- *Report grid view*: Displays the report information specified in the query
- *Management view*: Displays online database, archiving, and retrieval information

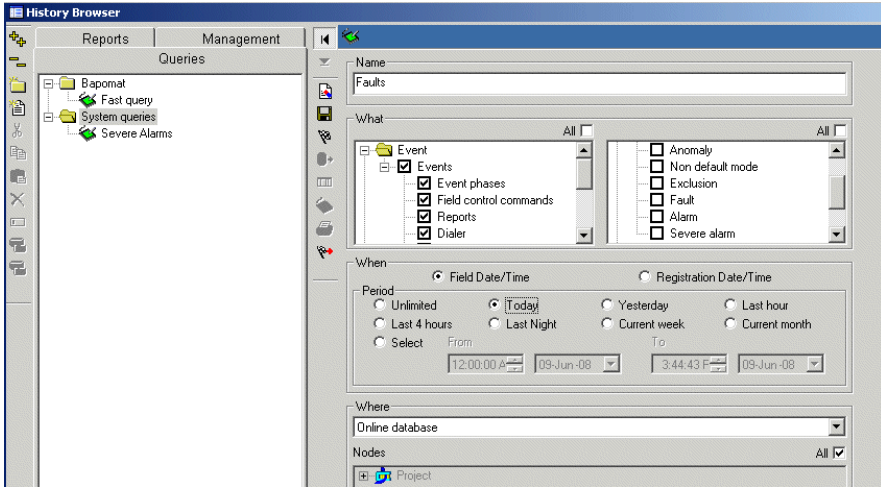


Fig. 6 History Browser – Query view

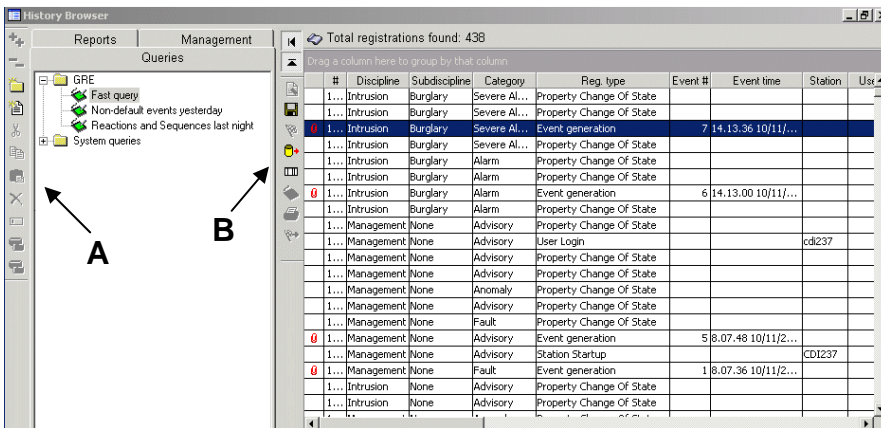


Fig. 7 History Browser – Report grid view

A Editing, archiving and retrieving icons.

Note: Select a query and use the editing icons to copy, move, paste or delete it.

B Query and report icons.

2.2 Assisted treatment

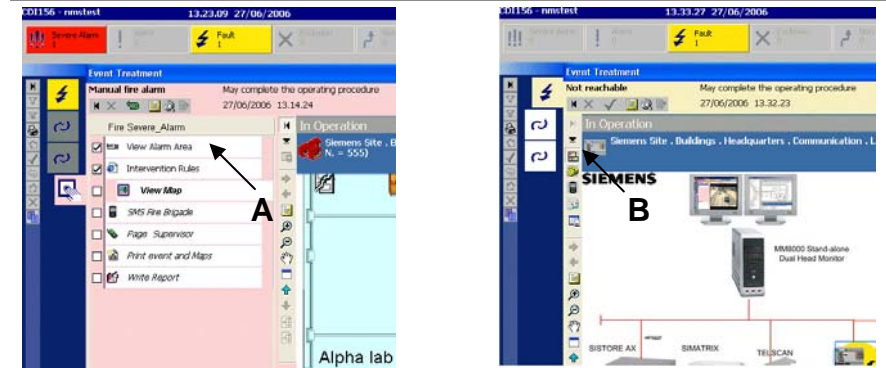


Fig. 4 Assisted treatment window – *Guided* on left; *Free* on right

Guided: Mandatory procedure steps appear in bold letters; other steps are optional (“A”).
Free: No procedure; the icons to perform optional steps are located on left of pane (“B”).

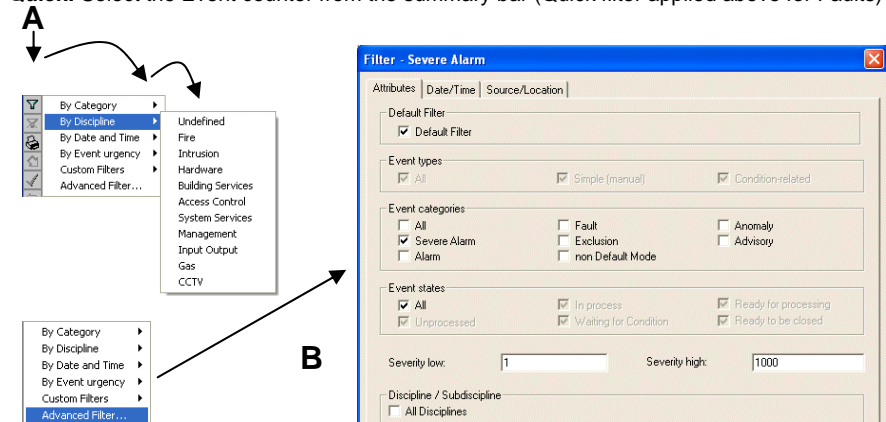
2.3 Event filters

Apply a filter to view specific types of events in the Event list. Use:

- **Quick** filter to display a specific category of events;
- **Simple** filter to display events with an attribute in common (such as discipline);
- **Advanced** filter to display events with two or more attributes in common.




Quick: Select the Event counter from the summary bar (Quick filter applied above for Faults)



A - Simple: Select the filter icon then select an attribute to display a menu to choose from

B - Advanced: Select ‘Advanced Filter’ then deselect attributes you don’t want to see

Note: Create a **Custom Filter** for reuse by saving an Advanced filter.

To deactivate: Select the **Remove filter** icon  located left of the Event icon area

3 Plant Browser

To access the Plant Browser: Select **Menu > Browsers > Plant Browser** from the summary bar.

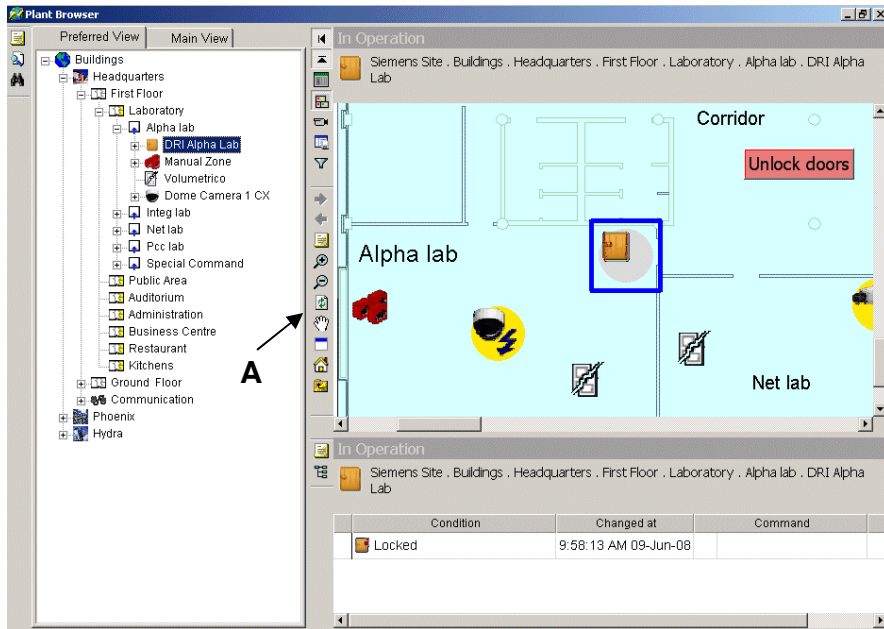


Fig. 5 Plant Browser – Map view

A Navigational icons. (See sections 3.1 – 3.3 for icon descriptions.)
Note: Available icons vary with the information window view.







There are three ways or modes that the Plant Browser can display:

- Point detail view
- Map view (shown in Fig. 5)
- Live video





Note: Depending on your system, the display mode may be automatic when you select a point, or you can manually select it.

3.1 Navigational icons – Point detail view





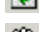



Note: The Point detail view icons described below are also available in Map and Video view.

Point detail icon	What it does:
	Show/hide hierarchical tree.
	Show/hide detail view of item selected.
	Turn on point detail view to see properties of the item selected in the tree.
	Turn on map view to see where the item selected in the tree is located.
	Turn on live video for a selected point.
	Save the Plant Browser layout.











3.1 Navigational icons – Point detail view (cont'd)

Point detail icon	What it does:
	Use the filter to select a different view, such as “Main” or “Preferred”.
	Open point properties window for the item selected in the hierarchical tree.
	Refresh detail view. Note: This icon has a different function in map view. See the Geographical / Physical location description of a selected link in the Geographical tree.
	

3.2 Navigational icons – Map view

Map icon	What it does:
	Go to next / previous page of map (respectively).
	Open point properties window for the item selected on the map.
	Zoom in or zoom out on the map that you selected.
	Reload the page to display the original view (cancels effects of zooming and panning).
	Slides the map (pans) around on the page.
	Displays a pop-up window with an overview of the entire map.
	Go to “home”, which is the top-most node of tree.
	Note: Display is blank unless a map is associated with this node. Link back (or up) one level in the tree to display map associated with that node.

3.3 Video control icons – Video view

Video control icon	What it does:
	Toggle the display from a single camera view to up to four camera views. Quad view enables the quad view control icons. (e.g. )
	Restores the pre-configured default camera view (quad view).
	Display a menu to allow you to choose to display all cameras associated to a point, or point cameras only.
	Start displaying the streaming video images as they are received from the camera.
	Search and then display a local recorded video file.
	Start / Stop recording video images into a local file.
	Open a control panel for PTZ camera controls (Pan / Tilt / Zoom).
	If more cameras are associated to the current point, select the next camera/previous camera.
	Acknowledge / Reset a camera if a motion detection event occurs.