

Cerberus™ PRO / Cerberus™ FIT

Sounder base, alarm sounder

DBS720, FDS221-R, FDS221-W



Alarm devices for the automatically addressable detector bus C-NET

- **Sounder base DBS720**
 - 11 tones to choose from, 2 programmable alarm levels
 - Sound level up to 88 dB(A); can be set on two levels
 - Compatible with addressed FD720 point detectors
 - Connection for 2 external alarm indicators
 - Supply and communication via C-NET peripheral device
- **Alarm sounders FDS221-R, FDS221-W**
 - 11 tones to choose from, 2 programmable alarm levels
 - Sound level up to 99 dB(A); can be set on three levels
 - Compatible with addressed detector bases FDB221 and FDB222
 - Option of using base accessories and sealing element
 - Connection for 2 external alarm indicators
 - Supply and communication via C-NET

Properties

- **Eco-friendly**
 - Environmentally friendly processing
 - Reusable materials
 - Electronic parts and synthetic materials can be easily separated
- **Sounder base DBS720 properties**
 - Adjustable sounds and sound levels, sounds synchronized for all alarm devices
 - No auxiliary supply; supply takes place via C-NET
 - Very low operating current
 - Periodic test of acoustic part (inaudible)
 - Monitoring of device status
 - Space for auxiliary terminals
- **Properties of alarm sounders FDS221-R, FDS221-W**
 - Protected electronics, high-quality components
 - Integrated line separator
 - Adjustable sound level and tones
 - Addressed bases FDB221, FDB222 with screwless connection terminals
 - No auxiliary supply; supply takes place via C-NET
 - Very low operating current
 - Periodic test of acoustic part (inaudible)
 - Monitoring of device status

Use

Sounder base DBS720 applications

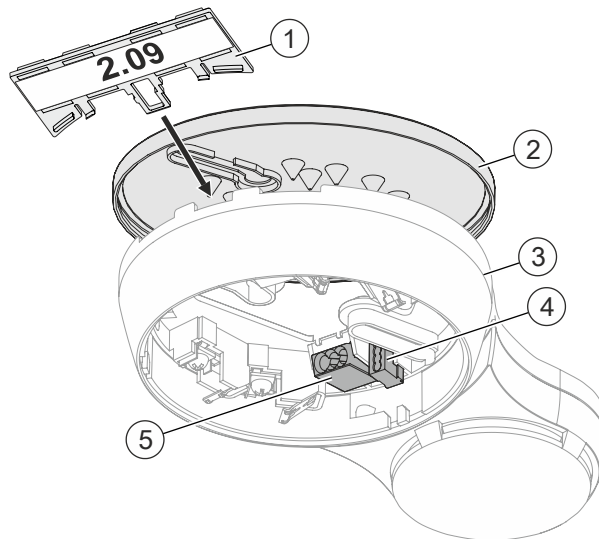
- Hotel rooms
- Sick rooms
- Care homes, living rooms, and lounges

Alarm sounders FDS221-R, FDS221-W applications

- Along escape routes
- Corridors
- Staircases

Intended use

The sounder base DBS720 and the alarm sounders FDS221-x are intended for use as alarm devices on an C-NET detector line in conjunction with a fire control panel FC72x ('Cerberus PRO' product line) or FC361-xx ('Cerberus FIT').



- | | |
|-----------------------------|----------------------------------|
| 1 Designation plate FDBZ291 | 4 Micro terminal DBZ1190-AA |
| 2 Detector_base_seal RS720 | 5 Connection terminal DBZ1190-AB |
| 3 DBS720 | |

Detector base seal RS720



- For achieving a higher IP protection category
- Mounted between detector base and ceiling

Designation plate FDBZ291



- For labeling with the location address
- Can only be used without detector base seal FDBZ295

Detector locking device LP720



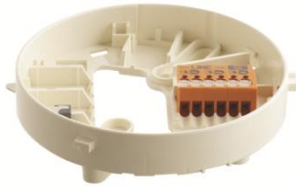
- For protection against theft of the point detector
- Set screw M3 x 12 mm prevents the point detector being unscrewed from the detector base
- Point detector can only be removed with the appropriate Allen key

DBZ1190-AA micro terminal and DBZ1190-AB connection terminal



- Micro terminal DBZ1190-AA
 - Cable cross section up to max. 0.5 mm²
- Connection terminal DBZ1190-AB
 - Cable cross section up to max. 2.5 mm²
 - For connecting two external alarm indicators or the cable shielding

Addressable detector base FDB221 / FDB221-AA



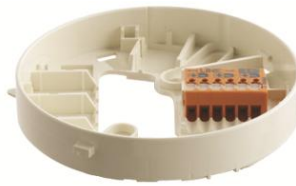
Function:

- Detector base with stilts for fire detectors with addressable signal processing
- 'Orange' connection terminals, 0.2...1.5 mm² conductor cross-section
- FDB221-AA also contains micro terminal DBZ1190-AA

Use:

- For recess-mounted cable entry
- For surface-mounted cable entry up to a cable diameter of 6 mm

Flat, addressable detector base FDB222



Function:

- Flat detector base for fire detectors with addressable signal processing
- 'Orange' connection terminals, 0.2...1.5 mm² conductor cross-section

Use:

- For flush mounting; only for recess-mounted cable entry

Sealing element FDBZ295



Function:

- For improving the protection category. However, detectors can no longer be installed or removed using the detector exchanger.

Note: Cannot be used in conjunction with designation plate FDBZ291!

Base attachment FDB291



Function:

- For routing surface-mounted cables larger than Ø 6 mm
- Detector base is secured with a snap fastener

Base attachment humid FDB293



- For achieving a higher protection category
- For mounting in wet or humid environments
- Required when using detector heating unit FDBH291
- Required when using protective cage DBZ1194 or EMC-protective cage FDBZ294
- Mounted between detector base and ceiling
- Detector base mounted quickly: The detector base simply clicks into place in base attachment humid FDB293.

Base attachment wet FDB295



- For achieving a higher protection category
- For mounting in wet or humid environments
- Required when using detector heating unit FDBH291
- Required when using protective cage DBZ1194 or EMC-protective cage FDBZ294
- Mounted between detector base and ceiling
- Detector base mounted quickly: The detector base simply clicks into place in base attachment wet FDB295.

Protective cage DBZ1194



- To protect the point detector from damage
- Can only be mounted together with the following base attachments:
 - Base attachment humid FDB293
 - Base attachment wet FDB295
 - Base attachment wet BA721

Designation plate FDBZ291



- For labeling with the location address
- Can only be used without sealing element FDBZ295

Designation plate DBZ1193A



- For labeling with the location address
- Can only be used with the following base attachments:
 - Base attachment humid FDB293
 - Base attachment wet FDB295

Detector locking device FDBZ293



- For protection against theft of the point detector
- Set screw M3 x 6 mm prevents the point detector being unscrewed from the detector base
- Point detector can only be removed with the appropriate Allen key

DBZ1190-AA micro terminal and DBZ1190-AB connection terminal



- Micro terminal DBZ1190-AA
 - Cable cross section up to max. 0.5 mm²
- Connection terminal DBZ1190-AB
 - Cable cross section up to max. 2.5 mm²
 - For connecting two external alarm indicators or the cable shielding

DBS720 sounder base

- The sounder base provides an acoustic alarm in the addressed fire detection system FS720 and FS360
- Any detector can activate the sounder base
- Can be used with all point detectors from the Cerberus PRO FD720 series (for detectors, see product data sheet A6V10202198 and A6V10284161)

FDS221-R, FDS221-W

- Sound level of alarm sounding in the event of a fire alarm; clearly recognizable as a danger signal
- Synchronization of tones with the other addressed peripheral devices with tone function FDS229-x and sounder bases DBS720 on the same detector line (C-NET)

Type Overview

Type	Designation	Order number	Weight [kg]
DBS720	Sounder base	S54319-F5-A1	0.090

Accessories			
RS720	Detector base seal	S54319-F8-A1	0.012
FDBZ291	Designation plate	A5Q00002621	0.002
LP720	Detector locking device (2x Allen keys, 100x set screws)	S54319-F9-A1	0.001
DBZ1190-AA	Micro terminal 0.28...0.5 mm ²	BPZ:4677080001	0.001
DBZ1190-AB	Connection terminal 0.5...2.5 mm ²	BPZ:4942340001	0.001

Type	Designation	Order number	Weight [kg]
FDS221-R	Alarm sounder, red	A5Q00004117	0.110
FDS221-W	Alarm sounder, white	A5Q00006711	0.110

Accessories			
FDB221	Detector base, addressable	A5Q00001664	0.026
FDB222	Flat, addressable detector base	S54319-F1-A1	0.024
FDBZ295	Sealing element	S54319-F10-A1	0.062
FDB291	Base attachment	A5Q00001603	0.035
FDB293	Base attachment humid	A5Q00003945	0.320
FDB295	Base attachment wet	S54319-F21-A1	0.286
DBZ1194	Protective cage	BPZ.4677110001	0.138
FDBZ291	Designation plate	A5Q00002621	0.002
DBZ1193A	Designation plate	BPZ:4864330001	0.076
FDBZ293	Detector locking device	A5Q00005035	0.001
DBZ1190-AA	Micro terminal 0.28...0.5 mm ²	BPZ:4677080001	0.001
DBZ1190-AB	Connection terminal 0.5...2.5 mm ²	BPZ:4942340001	0.001

Document ID	Title
008109	Technical manual Alarm sounder FDS221
008164	Equipment overview Sinteso™ Detector system FD20
008168	Installation Alarm sounder FDS221
A6V10200373	Installation Detector base with loop contact DB721, DB722, detector base DB720, sounder base DBS720, detector base seal RS720, detector locking device LP720, base attachment BA720
A6V10202198	Data sheet Automatic fire detectors OH720, OP720, HI720, HI722
A6V10218037	Technical Manual Sounder base DBS720
A6V10229261	List of compatibility (for 'Cerberus™ PRO' product line)
A6V10284161	Data sheet Automatic fire detectors OOH740, OOH740
A6V10393192	List of compatibility (for 'Cerberus™ FIT' product line)

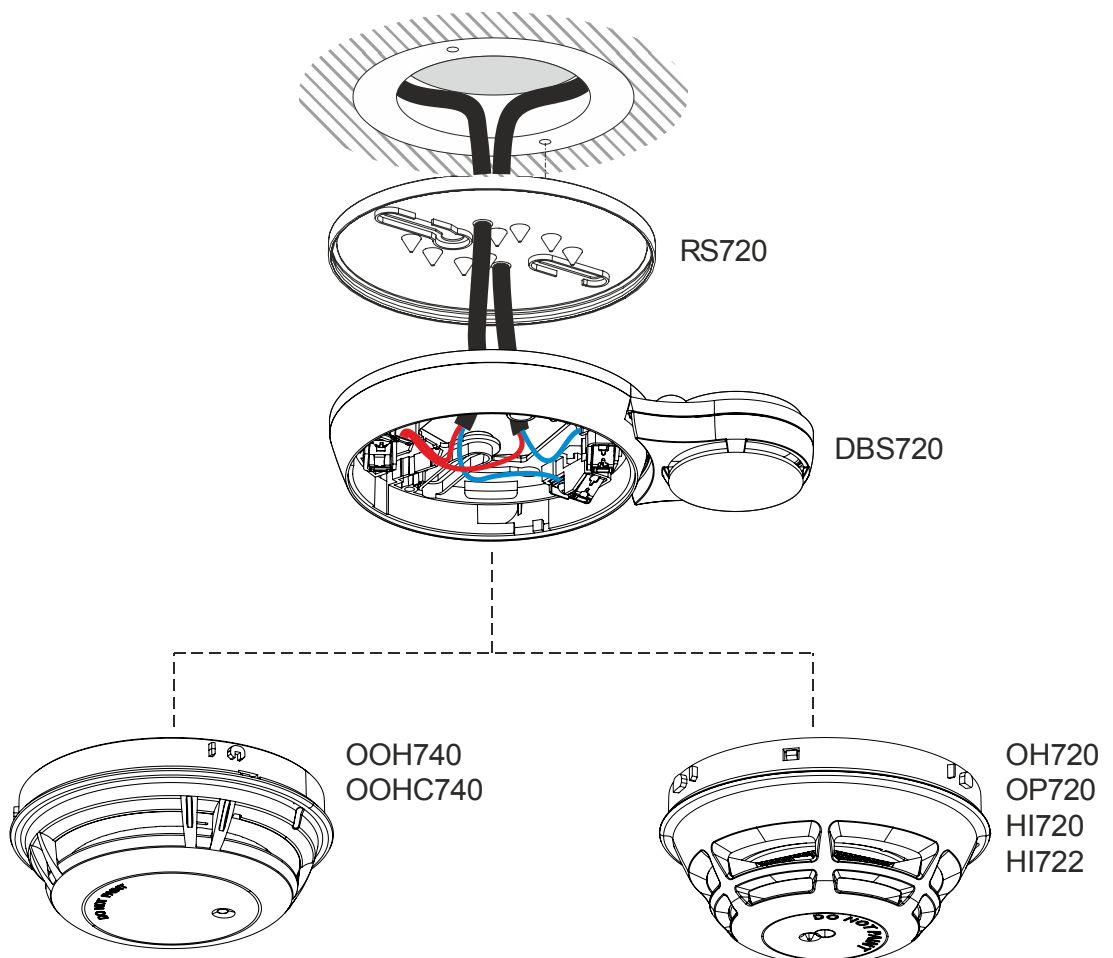
Related documents such as environmental declarations, CE declarations, etc., can be downloaded at the following Internet address:

<http://siemens.com/bt/download>

Installation

Installation sounder base DBS720

- The sounder base DBS720 represents a unit together with the detector. It already has a base and is mounted on ceilings.
- For recess-mounted feed lines
- For surface-mounted feed lines, break open the applicable openings for cables with a diameter of up to 8 mm.
- For a higher protection category, use detector base seal RS720
- Only use detector base seal RS720 with recess-mounted feed lines
- The following detectors can be mounted:
 - Multi-sensor smoke detectors OH720, OOH740, OOH740
 - Smoke detector OP720
 - Heat detectors HI720, HI722

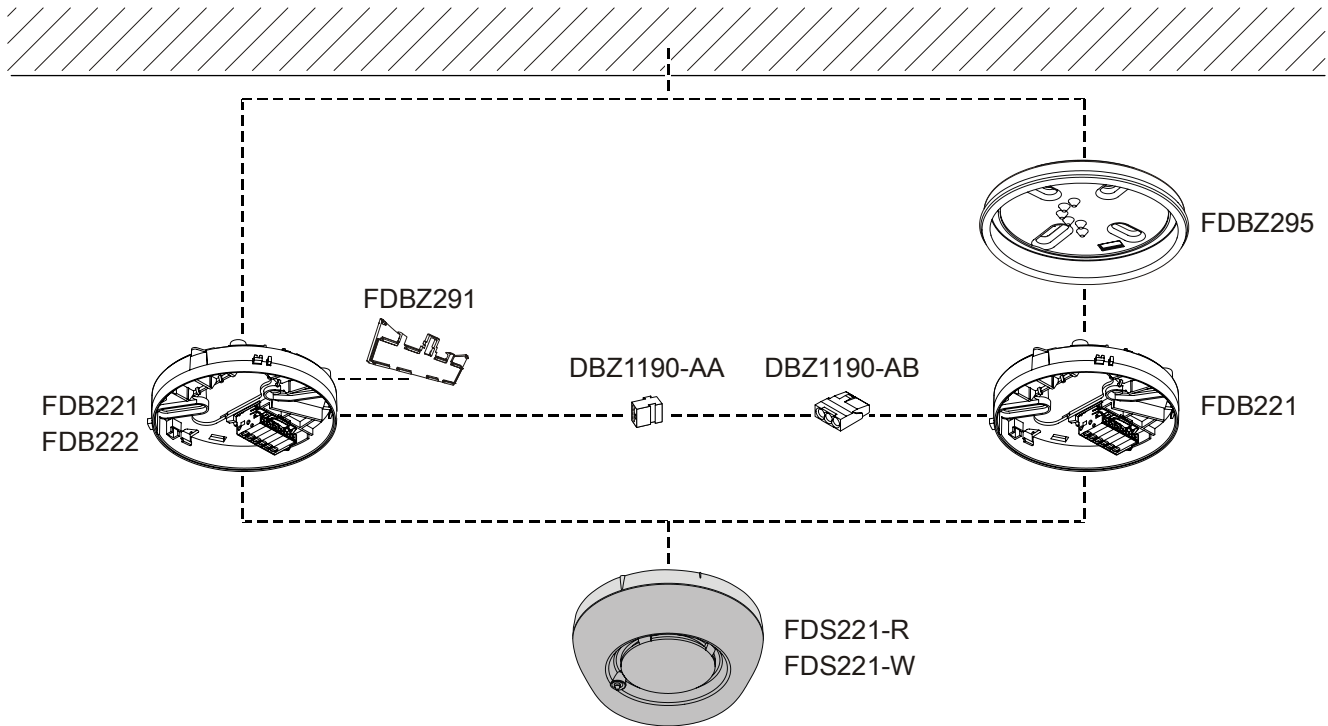


Installing alarm sounders FDS221-R, FDS221-W

- The alarm sounder FDS221-x is inserted directly in a detector base FDB22x and mounted on walls or ceilings.
- For recess-mounted cable entry.
- For surface-mounted cable entry with a cable diameter of max. 6 mm with detector base FDB221.

In the case of larger cable diameters, use base attachment FDBZ91, base attachment humid FDB293, or base attachment wet FDB295.

- In the case of recess-mounted cable entry for a higher IP protection category, use sealing element FDBZ95.



Alarm sounders and accessories

Disposal





The device is considered an electronic device for disposal in accordance with the European Guidelines and may not be disposed of as domestic garbage.


- Dispose of the device through channels provided for this purpose.
- Comply with all local and currently applicable laws and regulations.

Technical data

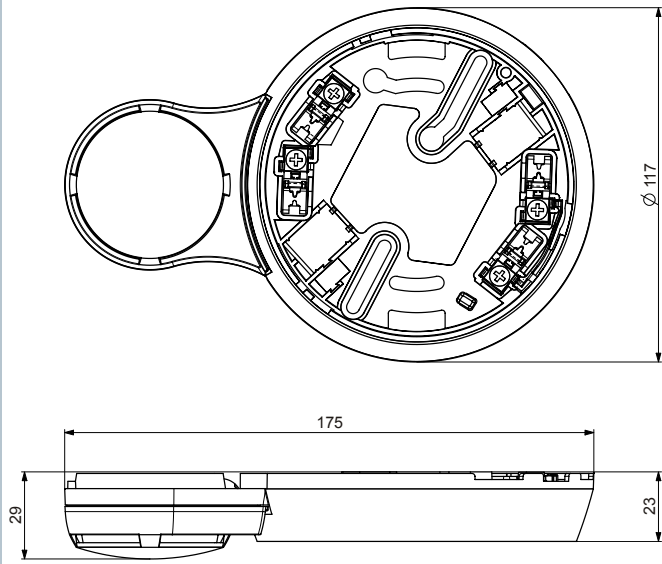
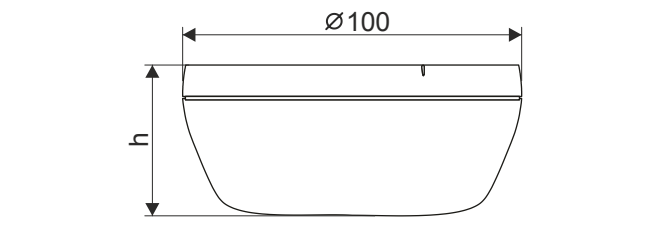
Supply	FDS221-R / FDS221-W	DBS720
Operating voltage	DC 12...33 V	DC 12...33 V
Operating current (quiescent)	Max. 250 µA	Max. 150 µA
• Sound activated	3.5 mA	1.2 mA
Sounds	11 2 alarm levels 3 sound levels	11 2 alarm levels 2 sound levels
Sound level	80...99 dB(A)	80...88 dB(A)
Ext. Alarm indicator (AI)	2	2
Operating temperature	-25...+70 °C	-25...+70 °C (observe point detector data)
Storage temperature	-30...+75 °C	-30...+70 °C
Air humidity	≤95 % rel.	≤95 % rel.
Communication protocol	C-NET	C-NET
Conductor cross-section on detector base	According to detector base	0.2...1.6 mm ²
Color	~RAL 3000 flame red ~RAL 9010, pure white	~RAL 9010, pure white
Protection category (IEC 60529) with	Wall mounting with feed line from below → IP43, otherwise IP40	IP41
• Base FDB221 or FDB222	IP44	-
• Base attachment FDB291	IP54	-
• Base FDB221 and sealing element FDBZ295	-	-
• Base attachment humid FDB293, base attachment wet FDB295	-	IP42
• Detector base seal RS720	-	-
Standards	EN 54-3, EN 54-17	EN 54-3
Approvals	G204073 531p/01 3029351 MEDB00003UV	G209133 531u 3040096 MEDB00003UV
System compatibility C-NET	FS720, FC361-xx	

07  0786	FDS221-R	Siemens Schweiz AG; Theilerstrasse 1a CH-6300 Zug Technical data: see doc. 008109
FDS221-R - Sounder incl. short-circuit isolator for use in fire detection and fire alarm systems installed in buildings.		
305/2011/EU (CPR): EN 54-3 / EN 54-17 ; 2014/30/EU (EMC): EN 50130-4 / EN 61000-6-3 ; 2011/65/EU (RoHS): EN 50581		
The declared performance and conformity can be seen in the Declaration of Performance (DoP) and the EU Declaration of Conformity (DoC), which is obtainable via the Customer Support Center: Tel. +49 89 9221-8000 or https://siemens.com/bt/download		
DoP No.: 0786-CPR-20012; DoC No.: CED-FDS221		

07  0786	FDS221-W	Siemens Schweiz AG; Theilerstrasse 1a CH-6300 Zug Technical data: see doc. 008109
FDS221-W - Sounder incl. short-circuit isolator for use in fire detection and fire alarm systems installed in buildings.		
305/2011/EU (CPR): EN 54-3 / EN 54-17 ; 2014/30/EU (EMC): EN 50130-4 / EN 61000-6-3 ; 2011/65/EU (RoHS): EN 50581		
The declared performance and conformity can be seen in the Declaration of Performance (DoP) and the EU Declaration of Conformity (DoC), which is obtainable via the Customer Support Center: Tel. +49 89 9221-8000 or https://siemens.com/bt/download		
DoP No.: 0786-CPR-20012; DoC No.: CED-FDS221		

07  0786	DBS720	Siemens Schweiz AG; Theilerstrasse 1a CH-6300 Zug Technical data: see doc. A6V10218037
DBS720 - Sounder for use in fire detection and fire alarm systems installed in buildings.		
305/2011/EU (CPR): EN 54-17 / EN 54-3 ; 2014/30/EU (EMC): EN 50130-4 / EN 61000-6-3 ; 2011/65/EU (RoHS): EN 50581		
The declared performance and conformity can be seen in the Declaration of Performance (DoP) and the EU Declaration of Conformity (DoC), which is obtainable via the Customer Support Center: Tel. +49 89 9221-8000 or https://siemens.com/bt/download		
DoP No.: 0786-CPR-20780; DoC No.: CED-DBS720		

Dimensional drawings

DBS720	FDS221-X								
	 <table border="1"> <thead> <tr> <th>Detector base</th> <th>h</th> </tr> </thead> <tbody> <tr> <td>With base FDB221</td> <td>52.5 mm</td> </tr> <tr> <td>With base FDB222</td> <td>47.5 mm</td> </tr> <tr> <td>With base FDB221 and sealing element FDBZ295</td> <td>55 mm</td> </tr> </tbody> </table>	Detector base	h	With base FDB221	52.5 mm	With base FDB222	47.5 mm	With base FDB221 and sealing element FDBZ295	55 mm
Detector base	h								
With base FDB221	52.5 mm								
With base FDB222	47.5 mm								
With base FDB221 and sealing element FDBZ295	55 mm								

Issued by
Siemens Switzerland Ltd
Building Technologies Division
International Headquarters
Theilerstrasse 1a
CH-6300 Zug
Tel. +41 58 724 2424
www.siemens.com/buildingtechnologies

© Siemens Switzerland Ltd, 2010
Technical specifications and availability subject to change without notice.