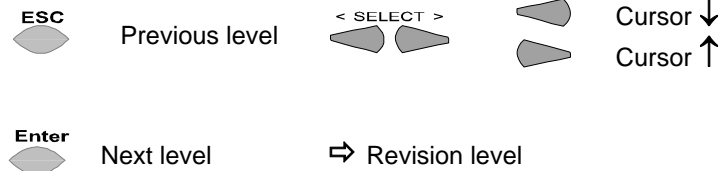


### Legend of Operating Instruction and AZL5...

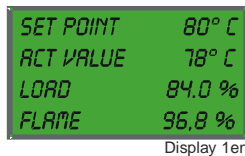


For language option, select:

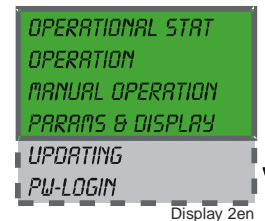
Param&Display ⇒ Access without password ⇒ AZL5 ⇒ Language

## Display

Normal operation

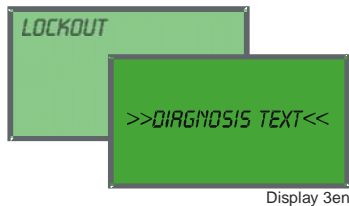


**ESC** Press ESC, to get into the main menu



Depending on burner sequence.

Display of fault or error



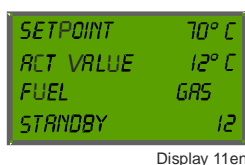
**ESC**



For fixing the display, press **Enter**.

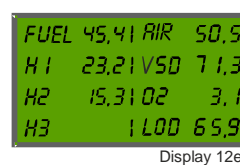
## Extended display LMV52...

Overview positions of actuator and O2 value



**Enter**

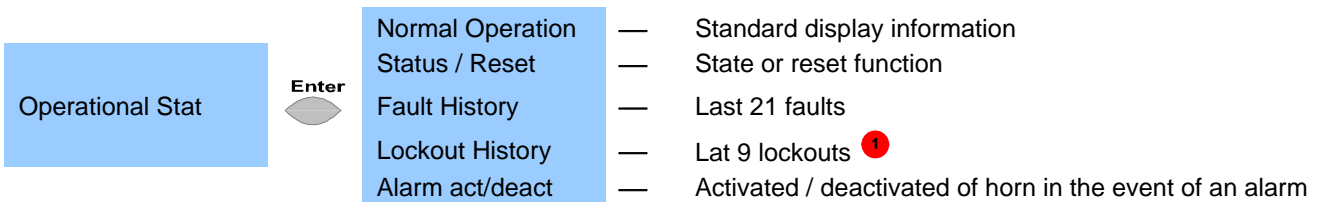
Press **ENTER**, to switch between this both displays



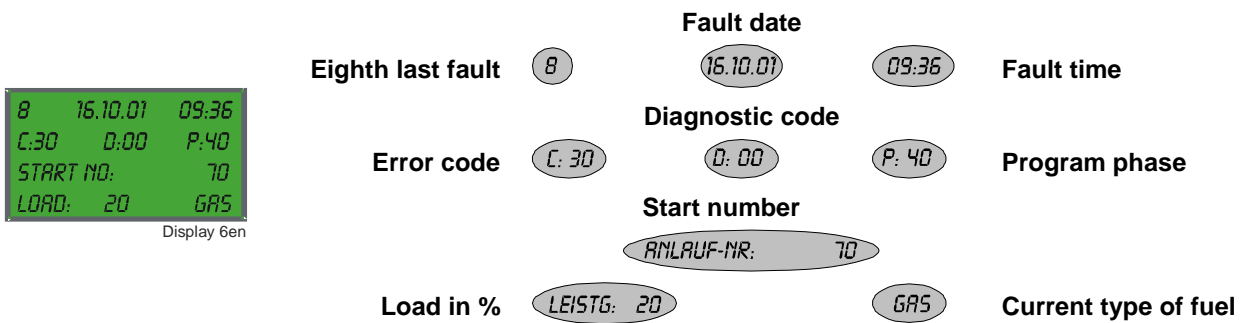
**ESC**

Press **ESC**, to get into the main menu

# Menu



## 1 Example: Error history



For fixing the display press 

 **< SELECT >**  **Selection of error history**

Menu level 1	Menu level 2	Menu level 3	Menu level 4	Menu level 5	Menu level 6
<b>OperationalStat</b>					
	NormalOperation				
	Status/Reset				
	FaultHistory				
	LockoutHistory				
	Alarm act/deact				

Menu level 1	Menu level 2	Menu level 3	Menu level 4	Menu level 5	Menu level 6
<b>Operation</b>					
	<b>BoilerSetpoint</b>	SetpointW1			
		SetpointW2			
	<b>User Maxload</b>	User MaxLoadMod			
		User MaxLoadStg			
	<b>Fuel</b>	CurrentFuel			
		FuelSelect			
	<b>Date/TimeOfDay</b>	<b>DisplayClock</b>	Date		
			TimeOfDay		
			Weekday		
		<b>SetClock</b>	Date		
			TimeOfDay		
			Weekday		
	<b>HoursRun</b>				
		GasFiring			
			OilStage1/Mod		
			OilStage2		
			OilStage3		
			TotalHoursReset		
			TotalHours		
			SystemOnPower		
		<b>StartCounter</b>			
			GasStartCount		
			OilStartCount		
			TotalStartCountR		
			TotalStartCount		
		<b>Fuel Meter</b>			
	Curr Flow Rate				
	Volume Gas				
	Volume Oil				
	Volume Gas R				
	Volume Oil R				
	Reset Date Gas				
	Reset Date Oil				
	LockoutCounter				
	<b>O2 Module</b>				
		Current O2 Value			
		O2 Setpoint			
		SupplyAirTemp			
		FlueGasTemp			
		CombEfficiency			
	BurnerID				
	<b>OptgModeSelect</b>				
		InterfacePC			
		GatewayBASon			
		GatewayBASoff			
		Gateway status			
		Type of Gateway			
	O2Ctrl activate				

Menu level 1	Menu level 2	Menu level 3	Menu level 4	Menu level 5	Menu level 6
<b>ManualOperation</b>					
	SetLoad				
	Autom/Manual/Off				

Menu level 1	Menu level 2	Menu level 3	Menu level 4	Menu level 5	Menu level 6		
<b>Params &amp; Display</b>	<b>BurnerControl</b>	<b>Configuration</b>	<b>ConfigFlameDet</b>	<b>FlameSignal</b>	FlameSig QRI_B		
					FlameSig ION		
			<b>ProductID</b>	ASN			
					ProductionDate		
					SerialNumber		
					ParamSet Code		
					ParamSet Vers		
				SW Version			
			<b>RatioControl</b>				
		Autom/Manual/Off					
		<b>O2Contr/Alarm</b>	<b>GasSettings</b>	<b>Control Param</b>	<b>PI</b>	Tau Low-Fire	
						Tau High-Fire	
			<b>Startmode</b>				
				Adjust. Temp O2			
		<b>OilSettings</b>	<b>Control Param</b>	<b>PI</b>	Tau Low-Fire		
					Tau High-Fire		
			<b>Startmode</b>				
				Adjust. Temp O2			
			<b>Process Data</b>				
				CombEfficiency			
				ManVar O2 Ctrl			
				State O2 Ctrl			
				Air-related Load			
				Diag Reg State			
		<b>LoadController</b>	<b>ControllerParam</b>	<b>ContrIParamList</b>	StandardParam		
					P-Part (Xp)		
			I-Part (Tn)				
			D-Part (Tv)				
			MinActuatorStep				
	SW_FilterTmeCon						
	SetpointW1						
	SetpointW2						
	SD_ModOn						
	SD_ModOff						
	SD_Stage1On						
	SD_Stage1Off						
	SD_Stage2Off						
	SD_Stage3Off						
			ThreshStage2On				

Menu level 1	Menu level 2	Menu level 3	Menu level 4	Menu level 5	Menu level 6
			ThreshStage3On		
		<b>ColdStart</b>			
			Temp ColdStart		
		<b>Configuration</b>			
			LC_OptgMode		
		<b>Adaption</b>			
			StartAdaption		
			AdaptionLoad		
		SW Version			
	<b>AZL</b>				
		<b>Times</b>			
			Sum/WinterTime		
			Time EU/US		
		Language			
		DateFormat			
		PhysicalUnits			
		<b>eBUS</b>			
			Address		
			SendCycleBU		
		<b>Modbus</b>			
			Address		
			Baudrate		
			Parity		
			Timeout		
			Lokal / Remote		
			Remote Mode		
			W3		
		Display Contrast			
		<b>ProductID</b>			
			ASN		
			ProductionDate		
			SerialNumber		
			ParamSet Code		
			ParamSet Vers		
		SW Version			
	<b>Actuators</b>				
		<b>ProductID</b>			
			<b>1 AirActuator</b>		
				ASN	
				ProductionDate	
				SerialNumber	
				ParamSet Code	
				ParamSet Vers	
			<b>2 GasActuat(Oil)</b>		
				ASN	
				ProductionDate	
				SerialNumber	
				ParamSet Code	
				ParamSet Vers	
			<b>3 OilActuator</b>		
				ASN	
				ProductionDate	
				SerialNumber	
				ParamSet Code	
				ParamSet Vers	

Menu level 1	Menu level 2	Menu level 3	Menu level 4	Menu level 5	Menu level 6	
			<b>4 AuxActuator</b>			
				ASN		
				ProductionDate		
				SerialNumber		
				ParamSet Code		
				ParamSet Vers		
			<b>5 AuxActuator2</b>			
				ASN		
				ProductionDate		
				SerialNumber		
				ParamSet Code		
				ParamSet Vers		
			<b>6 AuxActuator3</b>			
				ASN		
				ProductionDate		
				SerialNumber		
				ParamSet Code		
				ParamSet Vers		
		<b>SW Version</b>				
			1 AirActuator			
			2 GasActuat(Oil)			
			3 OilActuator			
			4 AuxActuator			
			5 AuxActuator2			
			6 AuxActuator3			
	<b>VSD Module</b>					
		<b>Configuration</b>				
			<b>Speed</b>			
				AbsoluteSpeed		
		<b>Process Data</b>				
			Max Stat Dev			
			Max Dyn Dev			
			Num Dev >0.3%			
			Num Dev >0.5%			
			Absolute Speed			
		<b>ProductID</b>				
		ASN				
		ProductionDate				
		SerialNumber				
		ParamSet Code				
		ParamSet Vers				
		SW Version				
	<b>O2 Module</b>					
		<b>Process Data</b>				
			Actual O2 Value			
			O2 Setpoint			
			SupplyAirTemp			
			FlueGasTemp			
		CombEfficiency				
		QGO SensorTemp				
		QGO HeatingLoad				
		QGO Resistance				
<b>ProductID</b>						
		ASN				
	ProductionDate					
	SerialNumber					

Menu level 1	Menu level 2	Menu level 3	Menu level 4	Menu level 5	Menu level 6
			ParamSet Code		
			ParamSet Vers		
		SW Version			
	<b>Flue Gas Recirc.</b>				
		actTmpFGR-sensor			
	<b>SystemConfig</b>				
		LC_OptgMode			
	<b>HoursRun</b>				
		GasFiring			
		OilStage1/Mod			
		OilStage2			
		OilStage3			
		TotalHoursReset			
		TotalHours			
		SystemOnPower			
		<b>Reset</b>			
			GasFiring		
			OilStage1/Mod		
			OilStage2		
			OilStage3		
			TotalHoursReset		
	<b>StartCounter</b>				
		GasStartCount			
		OilStartCount			
		TotalStartCountR			
		TotalStartCount			
		<b>Reset</b>			
			GasStartCount		
			OilStartCount		
			TotalStartCountR		
	<b>Fuel Meter</b>				
		Curr Flow Rate			
		Volume Gas			
		Volume Oil			
		Volume Gas R			
		Volume Oil R			
		Reset DateGas			
		Reset DateOil			



Menu level 1	Menu level 2	Menu level 3	Menu level 4	Menu level 5	Menu level 6
<b>Updating</b>					
	<b>ParamBackup</b>				
		<b>BackupInfo</b>			
			Date		
			TimeOfDay		
			BU included?		
			AZL included?		
			LC included?		
			ACT1 included?		
			ACT2 included?		
			ACT3 included?		
			ACT4 included?		
			ACT5 included?		
			ACT6 included?		
			VSD included?		
			O2 included?		
PW Login					
<b>SafetyCheckFunct</b>					
	SLT Test				
	SLT-Testload Mod				
	SLT-Testload Stg				

**Use of TÜV test function must be carried out by qualified staff!**

---

## Required information of service purpose

Plant: \_\_\_\_\_

Burner data: \_\_\_\_\_

## Burner management system LMV52...

	ASN	Production data	Software version
Burner control			
Load controller			
AZL5...			
Air actuator			
Gas actuator			
Oil actuator			
Auxiliary actuator			

## Lockout history

No.	Date	Time	Code	Diagnostic code	Error phase	Startup	Load	Fuel	Description of fault
1									
2									
3									
4									
5									
6									
7									
8									
9									