

SIEMENS



MM8000 MP4.15-01 Management Station

Release Notes

Data and design subject to change without notice. / Supply subject to availability.

© 2009 Copyright by
Siemens Switzerland Ltd

We reserve all rights in this document and in the subject thereof. By acceptance of the document the recipient acknowledges these rights and undertakes not to publish the document nor the subject thereof in full or in part, nor to make them available to any third party without our prior express written authorization, nor to use it for any purpose other than for which it was delivered to him.

1	Introduction	2
1.1	MP4.15-01 at a glance	2
1.2	MP4.15 at a glance	2
2	What's new in MP4.15 releases	4
2.1	New MP4.15 features	4
2.1.1	Localisation	6
2.2	MP4.15-01 bug correction.....	6
2.3	MP4.15 bug correction.....	8
2.4	Summary of connectivity options	12
2.5	Summary of Add-on modules	13
2.5.1	SiPass	15
2.5.2	Video	16
3	Installation and configuration procedures	17
3.1	Software installation	17
3.1.1	New systems: installing MP4.15 and then 4.15-01	17
4	Updating from older releases	19
4.1	Software License.....	19
4.2	Localisation	19
4.3	Updating from MP2.xx	19
4.4	Updating from MP3.xx and 4.10-xx.....	19
4.5	Updating from 4.15	20
5	Known issues in MP4.15-01	21
5.1	Installation	21
5.2	Configuration.....	22
5.3	Functionality	25
6	Documentation	29
6.1	DMS8000 Documentation Resource Information & Glossary	29
6.2	MM8000 Sales documentation	29
6.3	MM8000 Technical documentation.....	30
7	Customer support links & resources.....	32
7.1	Siemens BT FS.....	32
7.2	Microsoft.....	32
7.3	Adobe Acrobat	32

1 Introduction

DMS8000 software **MP4.15-01** is now available for MM8000, MK8000, MT8001, and NK8000 products.

These release notes provide the characteristics of the new software, including bug corrections and known issues. We recommend reading this document carefully before installing and using the software.

This document includes and replaces the release notes published for MP4.15.

1.1 MP4.15-01 at a glance

DMS8000 software **MP4.15-01** is a service release including a number of bug-fixing modifications also distributed as individual hotfixes. The list includes:

- MM8000 MP4.15 HotFix#01 – Win2000 Support
- MM8000 MP4.15 HotFix#04 – River CCTV
- MM8000 MP4.15 HotFix#06 – Localisation
- MM8000 MP4.15 HotFix#11 – PlantBrowser
- MM8000 MP4.15 HotFix#12 – Desigo PX
- MM8000 MP4.15 HotFix#17 – Sintony + DF8003
- MM8000 MP4.15 HotFix#18 – NK8210 Keep Alive
- MM8000 MP4.15 HotFix#19 – License
- MM8000 MP4.15 HotFix#20 – Dialer
- MM8000 MP4.15 HotFix#21 – MM8000 + Event Server
- MM8000 MP4.15 HotFix#23 – Dual Monitor – Vista
- MM8000 MP4.15 HotFix#24 – Composer Server and Composer for MT8001
- MM8000 MP4.15 HotFix#25 – MapViewer
- MM8000 MP4.15 HotFix#26 – MM8000 and Reaction Servers

The detailed error correction is documented in the list of section 2.2 at p.6.

1.2 MP4.15 at a glance

MP4.15 includes new features and a number of bug-corrections. At a glance, the new MM8000 feature list includes:

- Support for FS20 fire units, NICE Video systems, and various new versions of the supported families of control units.
- New support for Windows Vista SP1.
Confirmed support of Windows XP professional SP2 and Windows 2003 Server SP2.
Windows 2000 Professional and Server are no longer supported in the standard delivery.
- Enhancements to the MM8000 workstation functions for providing safer and more flexible solutions.
- Various improvements to the configuration tools, especially related to graphic functions.
- New license concept related to Solution (Siemens) and Product (3rd-party installer) sales channel. License codes have been streamlined.

MK8000 OPC server includes FS20 support.

→ See MK8000 MP4.15 Release Notes

MT8001 Terminal MP4.15 aligned with Composer and NK8000 MP4.15.

→ See MT8000 MP4.15 Release Notes

NK8000 MP4.15 provides an improved firmware version (DF8003 support).

→ See NK8000 MP4.15 Release Notes

2 What's new in MP4.15 releases

This section presents the enhancements provided in the new MM8000 software, starting from MP4.15, compared with previous MP4.10-xx.

2.1 New MP4.15 features

New connectivity

- FS20 fire systems MP1.3 over BACnet/IP
FS20 MP1.3 can connect to max.2 client systems (e.g. DMS8000).
DMS8000 MP4.15 supports NS8011 BACnet driver capable of connecting up to 50 devices on valid BACnet IP network architectures. Therefore, a total of max. 50 FC20 units (organized in valid FS20 architectures, refer to FS20 documentation) can be connected to the NS8011 driver on each DMS800 server/FEP station.
- DF8003 CPU module
- CC11 EP7F-Z2.2
- Direct support of Sintony SI410 LAN connectivity (no need of COM redirection)
- Sintony F9 (no encryption)
- SiPass MP2.40
- Latest SISTORE models (see below)
- DMS7000 MM_IE2 functions (I/O controller type MUX_MM_IE2 for 24 supervised inputs)
- NICE Video systems

Operating System

- Support for Windows XP SP3
- Support for Windows Vista SP1 Business, Ultimate, or Enterprise edition
→ See technical notes at p.21.



Although supported by MM8000 MP4.15, **Windows Vista may not be compatible with other software required**, e.g. for video functions. Before choosing Windows Vista as Operating System, please check the compatibility of the complete suite of software components. This specifically concerns the current versions of SISTORE, Geutebrueck, and Nice video software.

- Support for VMware® virtual machines as long as they can fully support the hardware and software requirements of MM8000 and other software packages required.
→ See technical notes at p.21.



The use of virtual machines may impose **severe limitations to live video functionalities**. Specifically, check carefully the requirements of video systems and the corresponding support in the virtual environment (e.g. DirectX support).

MM8000 workstation

- Live video and aerial view windows are included in the layout preferences that can be saved in the Plant Browser
- The About info shows the hot-fix modules installed
- Full support of 3rd party add-on modules developed for MP3.20 and higher
- Video Driver can be installed on FEP stations for load balancing
- History Browser provides customized printing options (hiding columns, sorting)

- History backup operations are now registered as history log.
- Scheduled and manual tasks are now more flexible as they can include commands that apply to a subset (and no longer to the entire set) of the linked points.
- Enhanced task supervision: an event is generated in case of task failure (Scheduled Tasks, Manual Tasks, and Time Programs).
- Quad view available to show images from up to 4 cameras.
- DVR and camera control commands (PTZ) are checked according to the configured security profiles.
- NICE video systems: camera PTZ commands in the control panel:
 - PTZ speed selection
 - Name, Set and Delete the camera PTZ presets
- Improved recovery of connection faults: client software re-establishes connection and resumes the same user session.

Composer and configuration tools

- Composer security can be enabled during software setup
- Command timeout can be configured for each subsystem
- Pager Step in Operating Procedure: new option for "Alarm Call"
- Graphics Maps:
 - Shift key allows drawing straight lines (horizontal / vertical / 45°)
 - Wrap-text function added in the text label of the command buttons
 - Coverage area can be shown if the camera is selected.
 - Mouse wheel can change the zoom factor
 - Configuration option to show Customer text, Technical text or both
 - Configurable button colours

NK8000

- Support for DF8003 CPU module featuring a higher communication baud rate.
- The subsystem connection status (reachable / not reachable) can be used as triggers in interaction programs.
- NK8000 backward compatibility: it is no longer necessary to update NK8000 with latest firmware version. DMS8000 MP4.15 supports multiple NK firmware versions, starting from MP4.10.

Software License

- MP4.10 Licenses are still valid for MP4.15.
- Solution and Product projects are now distinguished in MP4.15 by a specific license and service keys are now released for either of the two distribution channels. Service keys issued for the Solution channel work for any project, whereas Product service keys do not work for Solution projects.
- Starting from MP4.15, Service Keys require a PAK code that includes the distribution channel (Service or Product) and the expiration date. Two months before the actual expiration, a specific message warns Composer users about the need of renewing the service key license.



Unlike previous versions, a PAK code is also required for services keys.

- Simplified license structure, the following license checks have been removed:
 - Dual monitor
 - Assisted treatment
 - Number of maps
 - Scheduler and Logic Sequencer
 - Number of cameras"
- SISTORE license includes:

What's new in MP4.15 releases

- Number of drivers (for FEP configurations)
- Number of connections to DVR's
- NICE license check:
 - 3rd-party license
 - Number of drivers (for FEP configurations)
 - Number of connections to DVR's

Installation CD

- MT8001 MP4.15 setup option added to install configuration tools and drivers
- NK8000 MP4.15 setup option added to install configuration tools and drivers

2.1.1 Localisation

As illustrated in the Localisation Guide (document no. A6V10062459), the MM8000 MP4.15 localisation process did not change in comparison with previous version.



We recommend **installing the localised MM8000 texts before starting any project configuration**. In fact, a large number of localised texts are instantiated when you create a new Composer project. Failing to localise the MM8000 environment in advance will result in additional translation activities required on the final project texts.



A localization kit is available that includes a Catalyst project file for the on-line help system. This feature is not currently documented in the Localisation Guide. Contact customer support for more information.

2.2 MP4.15-01 bug correction

ID	Found in...	Module	Notes
9294	4.15	Plant Browser	3 rd party video integration, HTML player. Camera point did not show the video snap-in button in the function bar. This happened navigating graphically through the geographic tree. Also corrected in: MM8000 MP4.15 Hotfix #11
9394	4.10	DESIGO PX integration	An unidentified event related to deleted points used to appear during PX status request. Also corrected in: MM8000 MP4.15 Hotfix #12 MM8000 MP 4.10-02 Hotfix#22
9400	4.10	License key	Failure to support double license keys (2 keys on the same PC for redundancy). Also corrected in: MM8000 MP4.15 Hotfix #19 MM8000 MP 4.10-02 Hotfix#21
9405	4.15	Localization	Missing support for Latvian language Also corrected in: MM8000 MP4.15 Hotfix #06
9407	4.10	Map Editor	Problems in modifying graphic object properties. The graphic editor might freeze the user interface while changing the Pen Style setting. Also corrected in: MM8000 MP4.15 Hotfix #22 and then #25
9435	4.10	Video step in event treatment	If video step in operating procedures is set as optional, MM8000 used to keep the step unfinished and prevent the event from being closed. Also corrected in: MM8000 MP4.15 Hotfix #21 MM8000 MP 4.10-02 Hotfix#26
9436	4.15	History archive	History record used to include the "point change of status" even if the corresponding option in the configuration setting is disabled. Also corrected in: MM8000 MP4.15 Hotfix #21

ID	Found in...	Module	Notes
9457	4.15	DESIGO PX alarm reset	The DESIGO PX alarm reset did not work properly. Also corrected in: MM8000 MP4.15 Hotfix #12
9458	4.15	Filtered event acknowledgement	When a filtered event is acknowledged, the generation time in the event bar used to be erroneously replaced by the acknowledgement time. Also corrected in: MM8000 MP4.15 Hotfix #21
9461	4.10	CS6 zone symbols on graphic maps	Moving a zone in a CS6 configuration resulted in the corresponding link to a map symbol being deleted after importing the new metafile. Also corrected in: MM8000 MP 4.10-02 Hotfix#25 MM8000 MP 4.10 Hotfix#02
9465	4.15	MT8001 Composer projects	Restoring or opening an existing MT8001 Composer project resulted in some XMLOutput folders being deleted. This caused an invalid configuration download (MT8001 could no longer start) until a new XML preparation was executed. Also corrected in: MM8000 MP4.15 Hotfix #14
9468	4.15	DESIGO PX point with no Notification Class for MM8000	An Unidentified Event was missing to report an inconsistent configuration when the Notification Class of a configured point failed to provide proper feedback to MM8000. Also corrected in: MM8000 MP4.15 Hotfix #12
9530	4.15	Plant Browser tree with Hebrew texts	MM8000 failed to show Hebrew texts properly in the Plant Browser tree. Also corrected in: MM8000 MP4.15 Hotfix #13 and then 21
9537	4.15	NK8225	NK8225 gateway did not communicate with DF8003 units over RS485 connections. Also corrected in: MM8000 MP4.15 Hotfix #17 → The NK8225 units must be downloaded with the new MP4.15 build 89 firmware.
9550	4.15	Composer in dual-server Marathon installations	Composer might fail to start when used in Marathon-based dual-server environment. Also corrected in: MM8000 MP4.15 Hotfix #24
9553	4.15	License check	Problems in the license key checks after a few days of operation. Also corrected in: MM8000 MP4.15 Hotfix #19
9564	4.15	Modbus add-on module	Backward compatibility issues occurred between Modbus MP4.10 add-on module and NK822x MP4.15 firmware. Also corrected in: MM8000 MP4.15 Hotfix #09 and then 17 → The NK822x units must be downloaded with the new MP4.15 build 89 firmware.
9568	4.15	External HTML attachment in alarm printouts	HTML attachments did not print in the in alarm printouts. This is now corrected using a special registry setting. Also corrected in: MM8000 MP4.15 Hotfix #21 Two new registry script files becomes available in <installation folder>\Utilities\Reg. Namely: – IncludeHTMLAttachment_Enable.reg – IncludeHTMLAttachment_Disable.reg Run the "Enable" script to embed the alarm printout HTML attachment in the main event page thus providing a compact output with no page feed in-between. Note that the attachment must only include specific HTML codes excluding HTML, HEAD, and BODY control tags.
9569	4.15	Keep Alive	Problems with NK822x keep alive application. Also corrected in: MM8000 MP4.15 Hotfix #18

What's new in MP4.15 releases

ID	Found in...	Module	Notes
9571	4.15	Plant Browser with dual screen in closed mode	When running a dual screen interface under Windows Vista in closed and locked mode, the Plant Browser application failed to start on the second monitor. Also corrected in: MM8000 MP4.15 Hotfix #23
9573	4.15	Tamper events of Sintony E-Bus devices	Tamper handling for Sintony E-Bus devices has been modified to prevent false alarms from occurring. Also corrected in: MM8000 MP4.15 Hotfix #17
9576	4.15	Dialer step event treatment	An error in the dialing step of operating procedures was corrected replacing an old Active X component. Also corrected in: MM8000 MP4.15 Hotfix #20
9594	4.15 and earlier	SISTORE AX 3.6	Support has been provided for new SISTORE AX 3.6 Remote viewer.
FSP00064129 Help Desk ID: 152757	4.15	Map Editor	Problems in handling layers in the map editor: layers could be duplicated and renamed erroneously. Also corrected in: MM8000 MP4.15 Hotfix #22
FSP00065222 Help Desk ID: 154708	4.15	Map Editor	Layer background text could mix up in the map. Text visibility associated to layers could go lost. Also corrected in: MM8000 MP4.15 Hotfix #25
FSP00063682 (DM 95554) Help Desk ID: 148857	4.15	Custom permissions for the Scheduler.	Some customized permissions did not work properly for the Scheduler application: setting "5 CUSTOM", "0 NONE", "3 ACTIVE+DEACTIVE" (use can include/exclude but not ack/reset) did not result in the include command being enabled. MM8000 MP4.15 Hotfix #26

2.3 MP4.15 bug correction

ID	Found in...	Module	Notes
7380 7712 8631	3.15-01 3.20-00 4.10-00	Graphical maps	Graphic Tool (MapMaker) problems while importing DWG files. Problems in AutoCAD background might also occur after migrations from previous versions.
7883	3.20-00	NK8000	In Composer, the Tools page of NS8210 and NS8011 driver does not show the version identifier of 3rd party firmware.
8381	4.10-00	Composer	The Motion (detection) and Sabotage flag was enabled even when cameras did not support this function. The flag is now visible only for cameras linked to video systems that support Motion Detection and/or Sabotage Alarm.
8422	3.20-02	Composer	Problem occurred in migrating from MP3.10-xx top MP3.20. CZ10, CZ12, and CS4 points originally out of scan were erroneously set back in scan.
8423	3.20-02	Composer	Occasional problem in downloading (creation of XML files failed).
8452	3.20-02	Graphical maps	The copy/paste function of double and triplet horizontal lines did not work properly. it was sometime difficult to find the pasted object.
8453	3.20-02	Graphical maps	Troubles in moving objects to front/ back. Erroneous results in case of grouped objects.
8508	4.10-00	Composer, Security, User configuration	No warning message clearly showed that a username being added is already present in Composer. The message "Last user action failed" on the Composer status bar was not sufficient.
8511	4.10-00	CC11 Ai-goRex	No acknowledge command was available at Area level in case of paper-out fault on CC11 EP7. This condition as well as the Teletransmission Fault could not be acknowledged from MM8000.
8544	4.10-00	MM8000 Startup	Occasional restart problem: PM repository module caused a Control Start Up COM failure (0x800706ba)
8563	4.10-00	NK8000 dial-up	NK8000 modem configuration: improve text strings, specifying that the communication timeout value is expressed in sec.
8567	3.20-02	CDI-net (CMSDL) Communication driver	Occasional restart/shutdown problem: CINDcmdsl.exe version ... fault address 0x0001e950.

ID	Found in...	Module	Notes
8593	4.10-00	Composer, OPC interface	Subsystems that do not provide any OPC interface used to erroneously show the MK8000 tab in Composer.
8603	4.10-00	License Key	Problems occurred in changing customer key and PAKS while Service Key is also installed.
8621	4.10-00	Video	In Plant Browser detail view, a camera command was missing (to switch the camera to monitor) in case camera was connected to SISTORE MX 2.60 and SIMATRIX.
8640	4.10-00	Reactions support	Deleting a reaction or a sequence that links a video camera results in the camera being disconnected from the point to which was associated.
8644	4.10-00	MM8000 internal user account	DMS8000_PROC user was not hidden on Welcome screen
8653	4.10-00	History Browser	Errors in the displaying treatment report information (Note, Operator and Approver fields) in the history browser as well as in the CSV export.
8667	4.10-00	Composer	Trouble in printing from Composer. A program crash might occur.
8668	4.10-00	Documentation	Defect corrected in the MP4.10 Installation, Configuration, and Commissioning Manual: the document specified that folders can be created for printers, although this function is not longer available.
8669	4.10-00	License	Error in deleting PAK's in the PAK Manager. The key number 8 (OPC Server MK8000) could not be removed.
8670	4.10-00	Localisation	The button to close the "Command in Progress" dialog should not be named "Cancel".
8678	4.10-00	Operating Procedures	In Composer, the Operating Procedures subfolder should be named "Scope" instead of "Subtree Folder".
8684	4.10-00	DESIGO PX	DESIGO PX objects use to be set as generic and not displayed in either the Logical or Physical view. They are now in the Logical tree.
8685	4.10-00	History Browser	Event List note are not fully shown (only the first line)
8696	4.10-00	Scheduler / Time Programs	The Time Programs reminders did not work if downloaded using the Incremental Download function
8698	4.10-00	Composer	In a specific case, after upgrading a project, sequence nodes used to be indicated as not downloaded (text in blue) even after executing the first download. However, the sequences worked fine.
8701	4.10-00	PXC, CMX	The PXC and CMX nodes were not shown properly when the Logical tree was selected as preferred view.
8702	4.10-00	Composer	In specific configurations, troubles occurred in Composer while deleting the NK8223 nodes.
8705	4.10-00	Installation Procedure	Cannot install NW8204 tool from the installation CD menu due to a naming error. A manual browsing in the setup files were necessary.
8706	4.10-00	NW8204 tool	Minor text error in NW8204 tool. The PUT command dialog erroneously shows GET in the caption bar.
8708	4.10-00	Localisation tools	Defect corrected in the XML editor: the "FIND" dialog should not be always in foreground to give the opportunity to edit the text just searched. Moreover, the common shortcut (e.g. CTRL+F) was not working.
8710	4.10-00	Interactions	Errors have been corrected that caused problems replacing NK822x units with interactions. Deleting and recreating an NK8225 involved in network-wide interactions used to imply warning messages about invalid interactions.
8715	4.10-00	Composer	Trouble in cancelling AutoCad import wizard in the Composer graphic tool. Pressing Cancel in the CAD selection step caused the Composer application to crash.
8745	4.10-00	Documentation	Defect corrected in the MP4.10 Video Connectivity Guide : the document shows that web tool for light video integration can be configured using an URL requiring HTTP access. Actually, only a local HTML file can be used.
8754	4.10-00	Documentation	Defect corrected in the MP4.10 Network, Fire, and Intrusion Connectivity Guide : the document provides a wrong description how to configure NK8225 in multi-host applications.

What's new in MP4.15 releases

ID	Found in...	Module	Notes
8760	4.10-00	Plant Browser	The Save Layout function did not include the settings in the detailed view required for video playback viewer.
8767	4.10-00	SiPass	Access Denied messages (Card not yet active, Time schedule violation, Expired card, Void card, Wrong PIN, Access with Daily code) were not supported.
8788	4.10-00	Composer	A defect was corrected that caused Composer restore to fail with specific file names.
8798	4.10-00	OPC Client	The OPC XML editor has been improved to correctly handle the command links to object properties. A missing check in the editor could result in duplicated command links and in download failures to occur.
8799	4.10-00	Localisation	CANCEL and OK buttons in Add Note and Attach Note did not work correctly.
8800	4.10-00	Localisation	The Text Note column header of the Notes table cannot be localized.
8822	4.10-00	Graphical maps	Wrong behavior of the Visibility configuration selection when new layers are inserted in a map and moved in the middle of the list.
8830	4.10-00	License	Error in checking Sipass connections.
8831	4.10-00	Event Server	During treatment, events related to Sipass (e.g. Door Forced) did not properly show as subsequent event while a previous event is being treated.
8840	4.10-02	NICE video systems	Wrong property was used for camera fault of NICE video system (moved to Signal Lost instead).
8909	4.10-01	Event filter	Event filtering did not apply the date and time criteria (Today, Yesterday, Last night, Last hour, Last half hour and Last quarter hour) properly when the same filter is reapplied at a later time.
8910	4.10-01	Video	The event live video width increased every time the related event treatment opened.
8911	4.10-01	Event notification	The user e-mail address configured for event notification used to be case sensitive. That has been removed.
8916	4.10	Installation	MM8000 setup could not start if .NET Framework 2.0 SP1 was installed.
8927	4.10-01	NK8000 dial-up	An erroneous test failure was announced at MM8000 start-up, even if no tests have been performed, yet.
8928	4.10-01	NK8000 dial-up	The location of the Test Running event on modems could be wrong.
8930	4.10-01	NK8000 dial-up	It was not shown whether an NK822x unit was connected via Modem or via Ethernet as primary line.
8931	4.10-01	NK8000 dial-up	Check was missing to verify if valid phone numbers have been configured for the modem functions.
8932	4.10-01	NK8000 dial-up	COM Port that are already allocated should no more display in the selection lists for other functions.
8933	4.10-01	NK8000 dial-up	Change the Event Icon used for the Modem "Test Running" event. The symbol used in the event list for modem Test Running event (a detector) was replaced.
8934	4.10-01	NK8000 dial-up	Randomly, the NK8210 process did not close when the MM8000 servers stopped.
8972	4.10-00	Localisation	The Yes/No answers were not localizable in the dialog related to customized event filters deletion and modification
8973	4.10-00	Localisation	National characters did not display correctly in the main titles of the help system.
8978	4.10-02	FS20	Aligned status was indicated long before MM8000 acquired all FS20 events.
8994	3.20-03	SiPass	Door Blocked status, recently provided over the SiPass interface, was not supported yet.
9027	3.20-03	Video	Configuration download used to fail (it blocked during activation) in large SISTORE CX configuration. This defect was also repaired in MM8000 MP 3.20-04 Hot-fix#44.
9061	3.20-04	Composer	Slow CC11 import (it might take more than 15 minutes to complete) in projects with many operating procedures.
9090	3.20-04	NK8000	Firmware version installed on NK822x was not shown in Composer pages.
9100	3.20-04	Composer	Composer performances were too slow on specific projects.

ID	Found in...	Module	Notes
9101	4.10-01	Graphical maps	Composer graphic tool might not show the configured Auto-CAD layer. This defect was also repaired in MM8000 MP 4.10 Hotfix#12.
9144	4.10-01	NK822x	The performances of NK8000 Network Driver NS8010 has been improved to better support large configurations. This defect was also repaired in MM8000 MP 4.10-02 Hotfix#14.
9149	4.10-01	CC11 EP7F	Support of CC11 EP7 data structure 1610 (Digital Zone) was not complete in NK822x. Sector P was not supported.
9168	4.10-02	FS20 support	The Technical Zone Fault (BDV customization) was not managed by MM8000 and the related activation could not be reset. All BDV customizations of Technical Zone are now supported.
9177	4.10-02	FS20 support	Previous releases did not properly manage FS20 objects using a non-default template. In the FS20 Eng Tool, it is possible to specify a template for customizing the object behaviour. For instance, a Fire Alarm Zone can be assigned to a Gal Alarm or Warning Zone, a Tech Zone can be assigned to an Extinguishing Zone. The related TemplateID is exported in the SibX file and is now used to handle the object properly.
9205	4.10-02	Localization support	The localization toolkit failed to install a file (Cnapinfodb_Res.dll) and caused an error in Composer selecting the operating procedure node. This defect was also repaired in MM8000 MP 4.10-02 Hotfix#15.
9206	4.10-02	FS20 support	FS20 import used to fail to handle specials characters (\ / > < ? *) in the panel description.
9219	4.10-02	CC60	The properties propagation for the CC60 Gas Elements is not correct. In fact, the event propagation occurred on the physical tree instead of the logical tree.
9233	3-20-04	SiPass	In systems using SiPass remote configuration, a short communication break resulted in MM8000 not detecting the fault and being no longer able to receive events and send commands to SiPass. This defect was also repaired in MM8000 MP 4.10-02 Hotfix#17 (also for MP 3.20-04).
9244	4.10-02	Video	In video systems with light integration in MM8000, refresh problems might occur that prevent live video to show up properly.
9333	4.10-02	Graphical Maps	In certain cases, the CAD Selection window of the import wizard was too small. That resulted in part of the drawing being cut off (as a workaround, the X and Y values of the image size used to be set in the extension tab).
9337	3.20-04	Style customizations	Inconsistencies were found in updating projects with large number of style customizations.
9352	4.10-01	Download	Download procedure could fail (activation hanged up) for projects including a large number of printer connections.
9354	4.10-02	License key	Erroneous license messages could show up reporting a false missing-key problem.
9364	4.10-02	History logs	A wrong user was specified in history logs related to Ack and Reset actions. That could occur if a user was treating an event and at the same time another was commanding the alarmed point from the plant browser.
9366	4.10-02	FC330	An import error on FC330 has been corrected that used to cause a problem in the link between collective line and zones.

2.4 Summary of connectivity options

Network	Notes	Further info. in DMS8000 documentation
Direct serial links: <ul style="list-style-type: none"> - CS11 AlgoRex® (via CK1142) - FC700A (via FG700A) - SI410 Sintony™ - CC1115 / FC330A 		Network, Fire & Intrusion Connectivity Guide: A6V10062425_a_en
LAN links: <ul style="list-style-type: none"> - Siemens CCTV: SISTORE, TELSCAN, IP Cameras - Geutebrück MultiScope - SiPass Access control - DESIGO PX - FS20 - NICE CCTV 	- DESIGO PX and FS20 via BACnet/IP	Network, Fire & Intrusion Connectivity Guide: A6V10062425_a_en
- Cerloop	-	Network, Fire & Intrusion Connectivity Guide: A6V10062425_a_en
- CDI-Net - NK8000 via serial link	-	Network, Fire & Intrusion Connectivity Guide: A6V10062425_a_en
NK8000 LAN: <ul style="list-style-type: none"> - NK8222 - NK8223 - NK8225 	<ul style="list-style-type: none"> - Dial-up connectivity - Network-wide interactions - NK8225 BACnet gateway ⁽¹⁾ - NK8000 MP4.15 firmware 	Network, Fire & Intrusion Connectivity Guide: A6V10062425_a_en NK8000 Installation, Configuration & Commissioning: A6V10062437_a_en
OPC links: <ul style="list-style-type: none"> - SIMATIC S7 - RCO R-Card M5 	-	

Tab.1 Network options

Peripheral equipment	Notes	Further info. in DMS8000 documentation
SMS service over GSM: <ul style="list-style-type: none"> - Siemens Modem M20 - Siemens Modem MC35 	-	MM8000 Installation, Configuration & Commissioning: A6V10062413_a_en
E-mail/SMS service over e-mail: <ul style="list-style-type: none"> - POP3 service provider 	-	MM8000 Installation, Configuration & Commissioning: A6V10062413_a_en
Paging system: <ul style="list-style-type: none"> - ESPA 4.4.4 system 	ASCOM, Novalink,& Telepage systems have been tested	

Tab.2 Peripheral equipment and services

¹⁾ Tests with DESIGO INSIGHT are still in progress.
The integrated DESIGO + MM8000 solution via NK8225 is not available yet.

2.5 Summary of Add-on modules

Add-on	Version	Notes
– Autronica BSxx Fire Control Units	V3.20	Distributed as separated module
– CDDL-CDSF Units	V4.10	Distributed as separated module
– CP100 Gas Detection Unit	V3.20	Distributed as separated module
– DLCS Door Control System	V4.15	Installed with base setup
– Geutebrueck Video Units	V4.15	Installed with base setup
– LIST SCU 2000 Fire Control Units	V3.20	Distributed as separated module
– MAXSYS PC601 Intrusion Control Unit	V3.20	Distributed as separated module
– Modbus Units	V4.10	Distributed as separated module
– NICE Video Units	V4.15	Installed with base setup
– R Card M5 Access Control System	V4.10	Distributed as separated module

New in MP4.15-01

Unlike what the current Add-on documentation says, when installed with MM8000 MP4.10 and later, all Add-on modules (any version) must be installed using the Add-on Manager function as described in the MM8000 ICC manual (document no. A6V10062413_a_en).

What's new in MP4.15 releases

Control units	Notes about latest version supported	Connectivity and configuration notes	Further info. in DMS8000 documentation
FS20	MP1.3	LAN	Network, Fire & Intrusion Connectivity Guide: A6V10062425_a_en
CS11 AlgoRex® EP5 and EP7 FC700A	EP7Z V2.2	Direct link, Cerloop, and NK8000	Network, Fire & Intrusion Connectivity Guide: A6V10062425_a_en
CS1115 Phase 4 FC330A Phase 4	ClSxx8.86	Direct link	Network, Fire & Intrusion Connectivity Guide: A6V10062425_a_en
SIGMASYS D100	SIGMASYS V3.5 D100 V40-2	NK8000	Network, Fire & Intrusion Connectivity Guide: A6V10062425_a_en
STT11		STT2410 and STT20 via NK822x	Network, Fire & Intrusion Connectivity Guide: A6V10062425_a_en
STT2410 / STT20		via NK8000	Network, Fire & Intrusion Connectivity Guide: A6V10062425_a_en
CZ10 / CC60 / CZ12 CS4 / CS440		Cerloop and NK8000	Network, Fire & Intrusion Connectivity Guide: A6V10062425_a_en
CS6 Guarto™	MP3 MP3+	via NK8000	Network, Fire & Intrusion Connectivity Guide: A6V10062425_a_en
SI410/420 Sintony™ Sintony Plus (no encryption)	Firmware F8-04, F8-05 and F09	Direct link and NK8000 Support for IP connection	Network, Fire & Intrusion Connectivity Guide: A6V10062425_a_en
DMS7000 units including MM-IE2		Cerloop and NK8000	Network, Fire & Intrusion Connectivity Guide: A6V10062425_a_en
SIPASS™	→ See 2.5.1 below	LAN	AC Connectivity Guide: A6V10062451_a_en
SIMATRIX 164; 648; SYS, SIMATRIX NEO	SIMATRIX NEO V2.0 still under test	via NK8000	Video Connectivity Guide: A6V10062457_a_en
SISTORE AX / MX / MX Pro / CX /SX DVR	→ See 2.5.2 below	LAN	Video Connectivity Guide: A6V10062457_a_en
TELSCAN		LAN	Video Connectivity Guide: A6V10062457_a_en
Stand-alone IP cameras (TELSCAN protocol)		LAN	Video Connectivity Guide: A6V10062457_a_en
DF8000/CF9000 I/O (DF8003 or CF9003 + DF8020/8040/8045/8046)	NK8000 MP4.15 + DF8003 can support higher baud rate (up to 19200 baud)	via NK8000	Network, Fire & Intrusion Connectivity Guide: A6V10062425_a_en DF8000 ICC: A6V10081388_a_en
Geutebrück CCTV MultiScope™ II Plus and III	→ See 2.5.2 below	LAN - Manual installation of Composer plug-in	Geutebrück CCTV Add-on manual: A6V10067796_a_en
Philips/Burle CCTV (LTC 8x00)		via NK8000	Video Connectivity Guide: A6V10062457_a_en
SIMATIC S7		LAN / OPC	OPC Connectivity Guide: A6V10065253_a_en
DLCS door control system (via WinCC OPC server)	WinCC V6.0 SP2	LAN - Manual installation of Composer plug-in	DLCS Add-on manual: A6V10067792_a_en
Autronica BSxxx	V3.20	via NK8000 - Add-on package is required	Autronica BS Add-on manual 008750_b_en
LIST SCU 2000 (field test only)	SCU 2000	via NK8000 - Add-on package is required	LIST Add-on manual 009248_a_en
MAXSYS PC6010	V2.11	via NK8000 - Add-on package is required	MAXSYS Add-on manual 008751_b_en
CP100	Cpa402c	via NK8000 - Add-on package is required	CP100 Add-on manual 009848_a_en
Modbus-based subsystems	V1.1a. One connection (no cluster) in RTU mode (no ASCII).	via NK8000 - Add-on package is required	Modbus Add-on manual A6V10067800_a_en
CDDL/CDSF-based subsystems	CDDL V1.0 CDSF all variants	via NK8000 - Add-on package is required	CDDL/CDSF Add-on manual A6V10067787_a_en
NICE DVR	→ See 2.5.2 below	LAN - Add-on package is required	NICE Add-on manual A6V10097205_a_en

Tab.3 Subsystem equipment and services

2.5.1 SiPass

The following table shows the compatibility between MM8000 and SiPass versions:

Compatibility matrix:	MM8000	SiPass 2.2	SiPass 2.3 Build 18	SiPass 2.3 Build 21	SiPass 2.35 Build 38	SiPass 2.35 Build 41/52	SiPass 2.40 Build 37	SiPass 2.40 Build 41
	MP3.15	Yes	No	No	No	No	No	No
	MP3.15-01	No	Yes	No	No	No	No	No
	MP3.15-02	No	No	Contact support (*)	No	No	No	No
	MP3.20	No	No	Yes	No	No	No	No
	MP3.20-01/-02	No	No	No	Yes	No	No	No
	MP3.20-03/-04	No	No	No	Yes	Yes	No	No
	MP4.10	No	No	No	Yes	No	No	No
	MP4.10-01	No	No	No	Yes	Yes	No	No
	MP4.10-02	No	No	No	Yes	Yes	No	No
	MP4.15	No	No	No	Yes	Yes	Yes	Yes

The following table shows the characteristics of the integrated solutions:

#	Description	MM 3.15 SiPass 2.2	3.15-xx SiPass 2.3	3.20 SiPass 2.3	3.20-xx SiPass 2.35	4.10-xx SiPass 2.35	4.15 SiPass 2.40
1	MM8000 replaces the SiPass related event management	Yes	Yes	Yes	Yes	Yes	Yes
2	AC users & permissions in SiPass launched by MM8000	Yes	Yes	Yes	Yes	Yes	Yes
3	Door statuses avail.in MM8000 text pages & graphics: Door Alarm (unique event for Door Forced or Held) Door Forced Door Held Door Locked / Unlocked Output Active / Inactive Input/Output Tamper Device Faults (except for Readers) Duress alarm Pass-back input Tamper/Status (REX button) Reader Fault and Tamper	Yes No No Yes Yes Yes Yes No No No	No Yes Yes Yes Yes Yes Yes Yes Yes Yes	No Yes Yes Yes Yes Yes Yes Yes Yes Yes	No Yes Yes Yes Yes Yes Yes Yes Yes Yes	No Yes Yes Yes Yes Yes Yes Yes Yes Yes	No Yes Yes Yes Yes Yes Yes Yes Yes Yes
4	Control commands avail. in MM8000 text pages & graphics: Door Lock / Unlock (propagated on the geograph.tree) ... Allow Access Output Activate / Deactivate	Yes Yes Yes	Yes Yes Yes	Yes Yes Yes	Yes Yes Yes	Yes Yes Yes	Yes Yes Yes
5	Support for ACC controllers Support for CC30 CerPass controllers	Yes No	Yes Contact support (*)	Yes Yes	Yes Yes	Yes Yes	Yes Yes
6	Store events+security-relevant AC transactions in MM8000 history DB. The transaction list includes: Access Denied (Zone Violation & HW Anti-pass back) ... Access Granted (not tracked by default)	Yes Yes	Yes Yes	Yes Yes	Yes Yes	Yes Yes	Yes Yes
7	Limit in number of devices configured in FLN lines	32	253	253	253	253	253
8	SiPass transactions can trigger MM8000 reactions	No	No	No	No	Yes	Yes
9	Support for BLN and IS bus objects	n/a	No	Yes	Yes	Yes	Yes
10	Support for FLN3a and FLN3b bus objects	n/a	No	Yes	Yes	Yes	Yes
11	Multiple SiPass systems connected to one MM8000	No	No	No	Yes	Yes	Yes
12	Events for Door locked and access denied causes	No	No	No	No	No	Yes
13	Objects introduced in SiPass MP2.40 (e.g.ACC lite)	No	No	No	No	No	No

Note:

(*) Feasibility should be technically verified by customer support

Tab.4 SiPass compatibility matrix

2.5.2 Video

All models of the SISTORE Digital Video Recorders are supported in various software versions: please refer to the compatibility matrix provided below and to the corresponding [known issues described on page 27](#).

Device model	Device version/type	MM8000 Version
SISTORE AX Note that compatibility with MM8000 depends on RAS software. MM8000 MP4.15-01 supports RAS V3.6 , (note that RAS V3.5 is not supported)	V2.4.0, V2.50	MP3.15, 3.15-xx, 3.20, 3.20-01/-02/-03/-04, 4.10, 4.10-01/-02, 4.15
	V2.6.0, V2.6.1	MP3.15, 3.15-xx, 3.20, 3.20-01/-02/-03/-04, 4.10, 4.10-01/-02, 4.15
	V2.6.2	MP4.15-01
	V2.7	MP4.15-01
	V2.8	<i>Currently under test, please refer to Interoperability Matrix on PSP</i>
	V3.1	MP3.20-01/-02/-03/-04, 4.10, 4.10-01/-02, 4.15, 4.15-01
	V3.5	MP4.10-01/-02 (using RAS software V3.1 and add Admin user on SISTORE AX device ⁽²⁾). MP4.15-01 (using RAS software V3.6) ³
	V3.6	MP4.15-01 (using RAS software V3.6 and add Admin user on SISTORE AX device)
AX lite	V1.0	<i>Currently not supported</i>
	V2.0	<i>Currently not tested, please refer to Interoperability Matrix on PSP</i>
SISTORE MX (including NVS)	V2.55, V2.57, V2.58 ⁽²⁾ , V2.60 ⁽⁴⁾	MP3.15-02, 3.20, 3.20-01/-02/-03/-04, 4.10, 4.10-01/-02, 4.15, 4.15-01
	V2.70	MP4.10-01/-02, 4.15, 4.15-01
	V2.80	MP4.15-01
SISTORE MX Pro	V2.45	MP3.10, 3.15, 3.15-xx, 3.20, 3.20-01/-02/-03/-04, 4.10, 4.10-01/-02, 4.15, 4.15-01
	V2.50	MP3.15, 3.15-xx, 3.20, 3.20-01/-02/-03/-04, 4.10, 4.10-01/-02, 4.15, 4.15-01
SISTORE CX/SX	V3.00, V3.01	MP3.20
	V3.1	MP3.20-01/-02/-03/-04, 4.10, 4.10-01/-02, 4.15
	V3.2	MP4.10, 4.10-01/-02, 4.15
	V3.4 ⁽⁵⁾	MP4.10-01/-02, 4.15
	V3.45	MP4.15, 4.15-01
	V3.5	MP4.15, 4.15-01
	V3.5.2	MP4.15, 4.15-01
TELSCAN	V2.00	<i>Not supported</i>
	V2.03A	MP3.15, 3.15-xx, 3.20, 3.20-01/-02/-03/-04, 4.10, 4.10-01/-02, 4.15
	V2.10	MP3.15-xx, 3.20, 3.20-01/-02/-03/-04, 4.10, 4.10-01/-02, 4.15, 4.15-01
Siemens IP cameras:		
→ direct on LAN, mapped as single-line TELSCAN	Fixed IP cameras CCIS 1337-LP, CFVA-IP, CVVA-IP	MP3.15-xx, 3.20, 3.20-01/-02/-03/-04, 4.10, 4.10-01/-02, 4.15, 4.15-01
→ via SISTORE MX	Any IP camera compatible with SISTORE	MP3.20, 3.20-01/-02/-03/-04, 4.10, 4.10-01/-02, 4.15, 4.15-01
Geutebrück MSC	V5.0 (3.613)	MP3.20, 3.20-01/-02/-03/-04, 4.10, 4.10-01/-02, 4.15, 4.15-01
NICE : NiceVision systems	V10.1 and V10.5	MP4.10-01 + NICE Add-on, MP4.15, 4.15-01

Tab.5 Video units

² MM8000 MP4.10-xx requires the RAS software V3.1 applied to SISTORE AX V3.5 (do not use RAS V3.5). Also, in the SISTORE AX device, a new user named **Admin** (upper case initial letter and default password "12345678") should be added. In fact, the default **admin** user in SISTORE is not compatible with MM8000 settings.

³ MM8000 **MP4.15-01** requires the RAS software V3.6. **Note that when a new MM8000/Windows user is defined, the RAS player must be started once as stand-alone application by this user before using it in MM8000.**

⁴ When using SISTORE MX V2.58 and V2.60, the Remote Viewer software version should always correspond with the DVR software version (Remote Viewer V2.58 with SISTORE MX V2.58 and Remote Viewer V2.60 with SISTORE MX V2.60).

⁵ Faults related to loss of camera signals are not supported by MM8000 with SISTORE CS/SX V3.4.

3 Installation and configuration procedures

3.1 Software installation

MM8000 MP4.15-01 is distributed as an add-on package for MP4.15 installations. For detailed information about the MP4.15 installation procedure, refer to the MM8000 ICC manual (document no. A6V10062413_a_en).

3.1.1 New systems: installing MP4.15 and then 4.15-01

The MP4.15 installation procedure includes the following steps:

1. Check system requirements.

Note the typical required software for a stand-alone MM8000 station:

- If required, the SiPass application software should be installed before MM8000, on the same PC or on another machine in the network. If a previous SiPass version is installed, upgrading to latest software is mandatory before installing MM8000. In this case, we recommend uninstalling SiPass and then installing the newest version.
- A local or networked SQL server or SQL Data Engine (**MSDE 2000** or **SQL Server Express 2005**). Note that SiPass includes the SQL Data Engine software (SQL Server Express 2005), which can be perfectly used by MM8000 as long as the **SQL 2005 Backward Compatibility pack is also installed** (SQLServer2005_BC.msi, available on DMS8000 CD). Also, be informed that the use of an external SQL server is not supported by SiPass, which requires a local server of its own.
- Microsoft software **.NET Framework 1.1 and 2.0** as well as **SQLXML 3.0 SP3** are required. All applications are available on the distribution CD and can be installed and used free of any license charge.
- If required, also install the video application software, according to the specific CCTV device. For detailed instructions, please refer to the related documentation.
- Other software may be required depending on the specific configuration including NK8000 networks and Alarm Printout services.
→ Please refer to the MM8000 ICC manual (doc.no. A6V10062413_a_en).

2. Log on as Administrator.

3. If an old release of MM8000 is installed (e.g. MP3.10/3.15/3.20), then you need to uninstall it and reboot the PC.

4. If SiPass will be used and an existing SQL engine is present, uninstall it.

At this point, if you need to install SiPass, you also have to remove the SQL server Data Engine previously installed by MM8000, and then delete the corresponding folder, typically C:\Program Files\Microsoft SQL Server.

Note that failing to remove the previous SQL server will result in the SiPass installation not executing properly.

5. Install MM8000 software, which can be:

- Stand-alone (or Server)
- Client
- FEP
- Configuration-only (Composer)
- License station (only for redundant server systems based on Marathon EverRun)

During the software setup, you have to select the security mode (standard or restricted), the server tasks start-up mode (automatic or manual), and other installation options.

→ If you are not familiar with the setup procedure, please read section 4 of the MM8000 ICC manual (doc.no. A6V10062413_a_en) before installing the software.

Installation and configuration procedures

6. Reboot the PC.
7. Install the MP4.15-01:
 - **Make sure that no MM8000 client applications are active** (including Composer and Simulation tools).
 - **Copy the MP4.15-01 setup files on a local drive**, e.g. in the folder:
C:\MM8000_MP4.15-01_Setup\...
 - **Launch the command: Fix_MM8000 MP4.15.01.exe** and follow the instructions on the screen.
8. Install the hardware key and enter the license code using the PAK Manager tool. Note that SiPass also requires a license option (Management Station Integration).

Notes:

- **Localisation:** by default, the DMS8000 software is installed in English. The installation procedure can install texts in another language as long as the MP4.15 language file (LANG_xxx.ZIP) is included in the setup folder along with the other files.

Later on, you can modify the language using the **Language Installation** utility. See MM8000 Localisation Engineering Guide, doc.no. A6V10062459.

4 Updating from older releases

4.1 Software License

All previous MP4.1x Composer and MM8000 licenses are still valid for MP4.15. Earlier licenses need to be updated.

4.2 Localisation

Use the language file (ZIP) of the MP4.15 localisation toolkit.
→ See MM8000 Localisation Engineering Guide, doc.no. A6V10062459.

4.3 Updating from MP2.xx

The configuration database update from MP2 releases - namely MP2.10, MP2.20, MP2.21, and MP2.30 - is possible using MM8000 MP2.31 and MP3.15 as intermediate conversion steps; see documents MM8000 MP2.31 Release Notes (008091_a_en) and MM8000 MP3.15 Release Notes (008901_a_en).

4.4 Updating from MP3.xx and 4.10-xx

Updating from MP3 releases (MP3.10-xx, MP3.15-xx, MP3.20-xx, and MP4.10-xx.) is possible as described in this section. You perform the following steps:

1. Make sure you have backup copies of your MM8000 project; namely:
 - Composer project backup
 - Runtime scheduler task definitions
2. Uninstall previous version and reboot.
3. If still present, delete the **C:\MM8000** or **C:\DMS8000** folder.
4. Install the new MM8000 software as described in section 3.1.
Do not forget to check the related hardware and software requirements.
5. Start Composer and restore your project
6. Open the project (note that the opening process may take quite a few minutes, especially large MP3.15 projects).
7. In the MM8000 structure tree, select:
 - Supervision System Settings → MM8000 System → Logical Configuration
→ User Data
8. On the Node tab, press the button labelled "Project Update".
The update procedure will start and may present a message window that informs you about forced modifications in the projects. A detailed log is provided in <installation folder>\Logs\NEOUPDATE.LOG.
9. The update procedure will take some minutes, depending on project size.
Please wait for the procedure to complete.
10. *[Database 3.15-xx and earlier only, not required for 3.20]*
In the MM8000 structure tree, select:
 - Supervision System Settings → MM8000 System → Logical Configuration
→ User Data → Graphic Maps**
 On the Node tab, press the button labelled **Map Update** and wait for the graphic map update procedure to complete.
11. If SiPass is used, align the access control configuration.
Different procedures are required depending on the database versions:
 - *[Database 3.15-01 and earlier only]*
the SiPass node in the Composer tree must be deleted and then created

again (note that the deletion will force you to reconfigure the access control points in maps, reactions, sequences, etc.).

- [Database 3.15-02 and later]
the alignment of the access control configuration is required.

After restoring a previous SiPass configuration, it is necessary to add a new user to the list of authorised operators for SiPass. The user data must be:

- Username: SiPassUser
- Password: SiPassPassword

It is essential to execute a SiPass database alignment before downloading a project that includes a SiPass access control system.

You can either connect to the SiPass application and then align the database (on-line mode) or import the XML database created with MP4.15 export tool. The alignment is also necessary (typically in off-line mode) in case the SiPass unit is simulated for test/demo purposes.

→ Refer to the Access Control Connectivity Guide (A6V10062451_a_en).



12.[Database 3.1x and 3.20 (if not already done)]

Update Journaling Services. Proceed as follows:

- Select:
Supervision System Settings → MM8000 System → Logical Configuration → System Data
- Check the **Journaling Service** node: if a journaling printer is configured, note down what template is used.
- Then, delete the **Journaling Service** node and then inserted it again from the menu. That will install the latest Composer component for this function.
- If a journaling printer is used in your configuration, link the printer to the journaling to the template you took note about before deleting.

13.Download the new project.

14.If used, download the NK822x units with the latest firmware and configuration.

→ Refer to the NK8000 chapter in the DMS8000 Network Connectivity Guide (A6V10062425_a_en).

15.Close Composer.

16.Run MM8000 and restore the runtime scheduler task definitions.

4.5 Updating from 4.15

Updating from MP4.15 only requires the installation of the MP4.15-01 service release.

Refer to the step 7 of the installation procedure described in 3.1.1 at p.18.

5 Known issues in MP4.15-01

This is a list of known limitations, problems, bugs and recommended practises at the time this software was released. Compared with previous Release Notes, new and updated points are marked by a side label for easier identification.

5.1 Installation

MS Windows 64-bit edition

Windows 2003 64-bit edition is not supported.

MS Windows Vista

The use of Windows Vista requires specific attention. Please note that:

- Vista introduced the new **UAC (User Account Control)**, a security-related feature that creates a number of warning messages. A manual UAC confirmation must be provided for MM8000 tool applications. Alternatively, UAC might be disabled. Refer to the MM8000 ICC manual (document no. A6V10062413_a_en).
- **Windows Vista Virtualization** creates a "per user" copy of system folders and registry keys and then redirects successive data operations. This feature causes no problem to MM8000 operations as long as you do not use system folders, such as **C:\Windows** or **C:\Program Files** to store any project information.
- Windows Vista does not officially support **MSDE 2000**. Use Microsoft SQL Express 2005 instead.
- On all PCs equipped with Windows Vista, we recommend to always keep a **free disk space of at least 15 GB**.
- When configuring printers in Windows Vista for MM8000 alarm printouts, make sure to **use the same name for the printer and the related Windows share**. If these names are different, the printer will not work.

VMware

MM8000 MP4.15 has been tested with the following virtualisation software:

- VMware Server V1.04
- VMware Workstation V5.5
- ESX V3.5

Note that the ESX virtualisation environment **does not directly support USB ports** that are needed for the MM800 license key. As recommended by VMware, the external network device AnywhereUSB® can be used to connect the USB keys.

Troubles with the hardware key

After installation, if the PAK manager cannot recognise the HW key, the sentinel drivers may need to be installed manually.

In this case, launch the set-up located in:

<installation folder>\PAK Manager\Sentinel Drivers\SSD5411-32bit

and follow the instructions; when prompted, select the default installation.

Cannot change domain/PC name

MM8000 does not support a domain/PC name change on the Client or Server after the installation. The solution is to uninstall MM8000, rename the PC, reboot, and then install the software again.

→ See also MM8000 ICC manual (A6V10062413_a_en).

Clear History DB

Rare cases of difficulties in the history functions have been reported after installation. In such cases, the FS-DMS support may recommend the use of the program:

<installation folder>\Utilities\Tools\Utilities\EngineeringTools.exe

This can clear (and optionally also resize) the database and solve the problem.

Windows NT 4.0 domain server

As documented in the ICC manual, MM8000 stations can work in a Windows network controlled by a domain server based on Windows 2000 or 2003 server. In case the server runs on NT 4.0 operating system, MM8000 can still be used, but only in advanced security mode, manually managing the user list in the NT 4.0 domain server. In other words, MM8000 must first be installed in advanced mode (on Windows XP or Vista networked stations) and then MM8000 operators must be defined on the domain server as Windows users before being created and downloaded from Composer.

→ For more details about security modes, please refer to the ICC manual (A6V10062413_a_en), section 4.2.

Problems with Windows patch KB902400

In some restricted-security environments (typically within a domain), if the DCOM access has been manually limited to the Administrator group, this Windows patch may affect the DCOM settings and remove some Administrators' permissions. This results in the MM8000 software being prevented from running properly.

In case of major problems in running the MM8000 after the KB902400 patch, make sure that, in the DCOM Security setting, the Administrators group is actually enabled for all the "Access permissions".

Note that this problem does not affect the MM8000 standard security setting.

Pak Manager and 3rd-party PAK codes

Pak Manager shows the 3rd Party PAK codes only if the related Add-on is installed. Instead, if the additional software is not present, the related PAK does not appear in the list. Note also that, if you install the Add-on package after the PAK configuration, you need to re-insert the PAK's in the PAK Manager to get the correct license. Additionally, this implies to restart the MM8000 servers.

NK8225 and DESIGO INSIGHT

Note that NK8225 and DESIGO INSIGHT cannot be connected. The integrated DESIGO INSIGHT + MM8000 solution via NK8225 is not available yet.

5.2 Configuration

Download failures

Repetitive download attempts may cause failures. In this case, close Composer after each download and then reopen it. Also try the **Empty_DB** procedure (see <installation folder>\Utilities\Tools\EngineeringTools.exe).

Graphic tool

- CAD-based metric maps do not handle correctly the position of additional JPG or BMP images that are added to the map background. When created, metric maps may or may not be set as CAD-based, depending whether the scaling factor and the size are entered manually or taken from the imported AutoCAD drawing.

In case images are used, it is recommended not to use the CAD-based option and set scaling factor and size manually.

Note that, after the creation wizard, it is not possible to change the CAD-based option, and a modification in this respect implies the creation of a new map.

- Adding CAD fonts: additional CAD fonts can be manually added in the folder <installation folder>\Resources\CADfonts (e.g. C:\MM8000\ Resources\CADfonts). If not already existing, the 'CADfonts' subfolder must be created.

DMS7000 metafile for CZ10 and CZ12

CZ10 and CZ12 customer texts (DMS7000 databases) can be imported only once. No subsequent import of CZ10 and CZ12 is possible.

CC11 AlgoRex EP7

- The following structures are imported in the logical tree but not in the physical tree:

- 1551 - Digital output;
- 1552 - Digital output supervised;
- 1560 - Internal horn;
- 1561, 1564, 1565 - External horn;
- 1562 attribute = RTFIRE - "Alarm" remote transmission channel;
- 1562 attribute = RTFAULT - "Fault" remote transmission channel;
- 1562 attribute = RTOTHER - "Other" remote transmission channel.

- "Move" function in AlgoRex tool: **the AlgoWorks "move" function**, which allows CC11 objects to be moved in the tree structure, **is not fully supported in MM8000 tools** (ref. defect #5521). In fact, the import procedure can treat this case correctly when the moved objects maintain the same parent node (e.g. Zone is moved from the last position to the first position within the same Section).

Instead, moving objects and changing the parent node (e.g. Zone is moved from Section 1 to Section 2) is not supported. The import operates by deleting and recreating the object in the MM8000 structure. Note that this results in the previous links of the moved object being lost, e.g. a fire zone will disappear from its map or its reaction. You then have to reconfigure the object in maps and reactions, etc.

STT20

STT20 metafile needs to be re-imported after restoring an MP 3.15 projects, else the download may fail.

Composer

- Be aware that the Composer Backup file (zip-compressed BAK file) does not include HTML pages, Address Book, Composer templates.
- Multiple clients and remote client: two Composer client stations can be used simultaneously for configuration purposes on the same project, using the Composer client software and connecting (even from a remotely networked PC) to the Composer server.

As for a single client, Composer requires a license + key or a Service key installed on the server machine. Note that the service key, when installed on the client PC, cannot enable the Composer client function.

→ See Composer Technical manual no. '003183_I_en'.

Note that, given the lack of specific messaging services between multiple stations, Composer users simultaneously accessing the same project should be able to directly inform each other about activities. In fact, time-consuming tasks like importing or downloading can temporarily suspend the server availability and significantly delay the system response. In addition, simultaneous editing of the same graphic map is not allowed (modification collision is not checked and may result in loss of data).



FS20: migrating from MP4.10-02

Configurations restored from MP4.10-02 –and including some specific types of FC20 zones– need a special reworking when FS20 databases are re-imported into Composer. In that case, the FC20 Zones are deleted and then recreated as new objects. Therefore, the related links and map symbols need to be configured again.

This concerns the following types of FC20 zones:

- Automatic zone ID 6 - Single, Extinguishing discharged
- Automatic zone ID 7 - Single, Extinguishing pre-alarm
- Automatic zone ID 8 - Single, Gas alarm
- Automatic zone ID 9 - Single, Gas warning
- Automatic zone ID 21 - Multi, Standard
- Automatic zone ID 102 - Single, Sprinkler alarm
- Manual zone ID 5 - Alarm Subsystem
- Technical zone ID 5 - Fault Subsystem
- Technical zone ID 7 - Fault Extinguishing System

Limitations in FS20 support

- Only limited support of **Technical zones** is provided on MM8000, in particular when these have been adapted to the specific needs of the country.
 - FC20 controls that are configured with **Start/Stop criteria based on Acknowledge or Reset commands** have only limited functionality when these commands are issued via MM8000.
- For details about these limitations, see Release Notes of FS20 MP1.3.

SI410 Sintony Uploader

SI410 provides one TCP port for external hosts to connect over TCP/IP network (**Sintony IP Port 2** field in the Sylcom Tool / System configuration).

In connecting to SI410 in IP mode, the Sintony Uploader makes use of this only port as the NS8014 DMS8000 driver does for the runtime connection. This implies that you need to stop the DMS8000 server software before being able to use the Sintony Uploader that applies this type of connection.

5.3 Functionality

FEP stations require server when starting up

Distributed configurations including FEP stations: When you start up a FEP station, you must ensure that the MM8000 server is already up and running.

Low virtual memory events

Depending on the specific configuration and on the PC hardware characteristics, MM8000 software may use up the memory resources in Windows and cause the “Low virtual memory” error message to display. Should that occur, you can **adjust the virtual memory size** (i.e. the size of the *paging* file where Windows swaps the active memory areas on disk). Using the Administrator login, proceed as follows:

- Start → Settings → Control Panel → System → “Advanced” tab → Performance / “Settings” button → “Advanced” tab → Virtual Memory / “Change” button.
- At this point, in the disk drive list that appears, select the Windows System disk drive (typically C:) and set the size values as follows:

	Client / FEP	Stand-alone / Server
Initial size	1024 MB	2048 MB and more ⁽⁶⁾
Maximum size	4096 MB	4096 MB

Screen savers

Please abide by the following guidelines if you wish to use a Screen saver while running MM8000:

- Use only standard Windows Screen savers;
- Do not configure password protection for Screen savers.

Standard Windows Screen savers allow for the Event icon area and the Summary bar to be present while the Screen saver occupies the Work area. Failure to comply with the guidelines listed above may result in problems with the MM8000 system.

Acrobat writer/distiller

Installing MM8000 typically affects the behaviour of the Acrobat Writer/Distiller, which will not work properly any more, even uninstalling MM8000.

M35 GSM modem and character set in SMS messages

In SMS notification messages, the M35 modem (ref. M35 manual “MC35_ATC_01_V05.00”) is configured to support the GSM 03.38 (7-bit) alphabet set, which includes a minimum set of characters.

In most cases, message texts in Western languages are adapted to the GSM set, whereas other languages (e.g. Russian, Chinese, Hebrew, etc.) are not supported (note that texts including invalid characters are discarded by the modem and the related message is lost).

In general, we recommend using plain ASCII characters in SMS messages. However, the customisation of some special characters is possible in the localisation procedure. Please refer to MM8000 Localisation Engineering Guide, document no. A6V10062459_a_en.

Removing history full events

In case the SQL history archive is automatically backed up, the MM8000 events related to archive full condition are no longer necessary to notify the operator. In such cases, we recommend setting ‘out of scan’ the History node of the Station in the MM8000 Physical Structure.

⁶ Initial size may be extended up to 3000 MB in case low memory events still occur.

SiPass

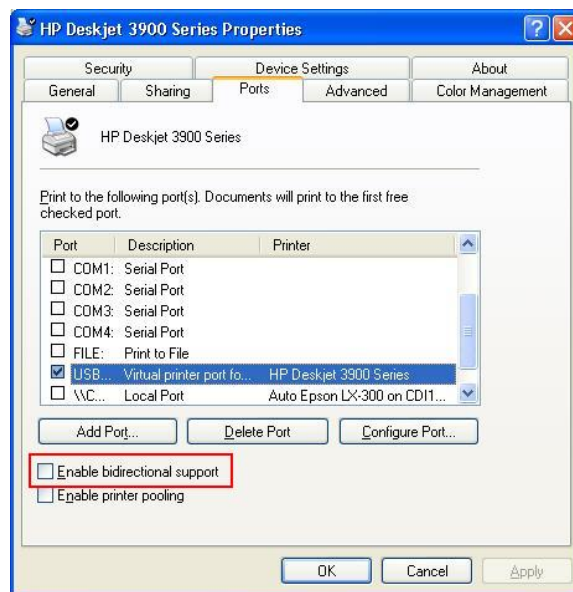
- **Reader name, FLN name and structure**
This information cannot be acquired from SiPass; this prevents MM8000 from representing the entire physical structure of the devices.
- **Object states and events**
The following information is not transmitted to MM8000:
 - Door Open (frame contact)
 - ACC Tamper, Power Fault, and Battery Operation
 - Area and Elevator objects are not visible at all
 - Soft Anti-pass back
- The use of SiPass **Alarm Classes** with MM8000 is affected by some limitations. Please refer to the SiPass chapter in the DMS8000 Access Control Connectivity Guide (doc.no. A6V10062451_a_en).
- The SiPass **functions which are also available in MM8000** - e.g. event notification (message forwarding in SiPass), reactions and sequences (event tasks in SiPass) - should be clearly assigned to either of the two systems, according to specific requirements, thus preventing any functional overlap.
- In SiPass 2.40 (any build), the default administration password is "SIPASS-PASSWORD" (all uppercase).

New in MP4.15-01

USB Printers

If a USB printer reports a fault condition in MM8000, try to remove the Bidirectional Control option in the printer properties page. Please follow this procedure:

1. Open the USB printer properties window (see picture below).
2. Select the "Ports" tab.
3. Uncheck the option "Enable bidirectional support".
4. Cancel all pending jobs in the spooler (most of them will be named "Check"). If you are not able to delete them, reboot the PC and make sure that the spooler list is empty.
5. Retry MM8000 printouts.



SISTORE AX

Note that SISTORE AX can support only one client at the time. When one MM8000 station is connected to the video unit to show video images, no other station can connect at the same time.

Hardware acceleration of the video adapter may influence the correct display of the SISTORE AX live video when used in MM8000. In case of problems, please reduce the acceleration, typically to a medium setting, following this procedure:

- Right click on Desktop.
- Select Properties and then Setting tab.
- Click the Advanced button.
- In the Window that appears, select the Troubleshooting tab.
- Reduce the Hardware Acceleration and click Apply.

If still not OK, repeat previous step until the live video shows correctly.

New in MP4.15-01

When using SISTORE AX video player (RAS V3.6) with a new MM8000/Windows user, you need to start the player as stand-alone application first. This will set the software environment and let the player work properly when is then used in MM8000.

SISTORE MX

In general, we recommend that you use SISTORE MX V2.58 or upgrade to this version. Depending on the version installed, the following difficulties may be encountered:

1. The SISTORE MX 2.55 must be used with the remote player of SISTORE MX 2.57 or later.
2. The archive player shows the control buttons (e.g. Play, Stop, Rewind, etc.) on the very right of the screen and therefore they are not visible most of the time.

Note: The Replay Toolbar (WC1) in SISTORE MX 2.57 player shows up together with the timeline on the left, thus covering the timeline; the actual replay toolbar containing recorded video controls is located on the right and is not visible. In SISTORE Remote Viewer 2.45 and 2.50 you could only see this part of the toolbar (without the timeline).
3. Pre-trigger recording (e.g. automatic recording in case of an event) not possible.

Note: In order to work with MM8000, SISTORE MXPro 2.45 and 2.50 requires the “Enable Software trigger” checkbox to be checked in the configuration. Instead, with SISTORE MX 2.55 and 2.57, the “Long time recording” schedule also has to be enabled to work-around a defect in the communication with MM8000. Unfortunately, this solution prevents the pre-trigger function from working.
4. Stopping the recording is not possible from the MM8000 (video recording is only stopped when the configured delay expires in SISTORE).

SISTORE CX/SX

Faults related to loss of camera signals are not supported by MM8000 with SISTORE CS/SX V3.4.

DESIGO PX

When an event occurs from DESIGO PX where the AckRequired flag is active, if the Ack command is not executed on MM8000 and DESIGO PX returns to normal, the Ack command on MM8000 changes to Reset, and the event stays in the event list.

NK8225 connected in BACnet mode

If an NK8225 is connected to MM8000 over a BACnet link, then a communication fault is displayed on the MM8000 even if everything is working properly.

Known issues in MP4.15-01

As a work-around, we suggest to set the "Ethernet" node of the NK8225 "out-of-scan". Note that, if a real communication problem occurs, it will be displayed as NK8225 unit not reachable.

SI410 Sintony

After commissioning on first connection, MM8000 may show a fault and a non-default event related to Sintony. You can clear these events by sending a Silence command.

6 Documentation


All documents were updated to include the new features added in MP4.15. Note the document numbers related to the new STEP numbering.

STEP documentation repository

On the Siemens intranet, the product documentation can be found in the STEP Documentation Repository. The STEP Web Client interface is available at the following address:

https://intranet.sbt.siemens.com/dbcom/en/db_porta/client.asp

The following describes one way to search and find a document:

1. Click on the "STEP WEB Client" image: 
2. Choose "04 Fire -3F" from the "Product Segment" box and select "Activate filter".
3. Select "All" in the Documents section of the Quick Search page and select "Advanced Search".
4. Enter the document number in the "Brochure No." field (e.g. A6V10062509) and press "Enter".

Note: STEP provides no results when the number of found objects is equal to or greater than 200.

→ To learn about other ways to locate a document, see DMS8000 Quick Reference Guidelines for Search and Finding DMS Documents in STEP (A6V10064704).



Note: MP4.15 documentation is delivered in PDF format only. You can find Word versions of all documentation in the STEP repository.

6.1 DMS8000 Documentation Resource Information & Glossary

New in MP.15

Documentation Resource Information and Glossary (document no. A6V10089056_a_en)

This document is a guide to the following:

- Reference Documents: a complete list of all DMS8000 documents and how to access them.
- Roadmap to Documentation: target audiences can see which documents were created for them, and the purpose for each document.
- Customer Support links & resources: contact information for SBT FS Customer Support Centre and other convenient links.
- General Glossary: this contains global definitions of terms and acronyms used in DMS8000 documentation.

6.2 MM8000 Sales documentation

Product Datasheet (document no. A6V10062415_a_en)

A brief summary of the features provided by the MM8000, available architectures, and networks. It also includes information about system limits and subsystems supported.

System Description (document no. A6V10062417_a_en)

This document is similar to the datasheet, but very much expanded, and more detailed. It describes the MM8000 system and the user interface functionality.

Sales Guide (document no. A6V10062427_a_en)

This guide presents the most important sales arguments. Also, a FAQ section provides the answer to some typical questions.

Sales Presentation (document no. A6V10062423_a_en)

This is a PowerPoint presentation provided by the marketing department. It can be modified, or used as is to show potential customers what the MM8000 can do.

DMS8000 Application & Planning (document no. A6V10063710_a_en)

This document contains a brief discussion of product marketing strategy for all FSP-DMS products, and a moderate level of detail about the architectural configurations supported by MM8000.

Tender Specifications (document no. A6V10062419_a_en)

This document is in the standard Siemens format, but it is designed for use and adaptation(s) by independent contractors responsible for selecting and managing the installation and upgrades of a security system for the final customer.

Offer Template (document no. A6V10062429_a_en)

This is intended as an aid for sales people in the preparation of initial and final offers.

6.3 MM8000 Technical documentation

MM8000 Operation Manual (document no. A6V10062409_a_en)

This manual is an operation guide, meant for end users.

MM8000 Installation, Configuration and Commissioning (ICC, document no. A6V10062413_a_en)

The ICC guide provides step-by-step procedures for installation and configuration of the MM8000. During configuration, this manual should be used in tandem with the DMS8000 Connectivity Configuration guides.

The installation checklist at the end of the document is intended to be used as an aid in gathering information from the customer prior to beginning configuration.

DMS8000 Connectivity Configuration Guides:

- **Network, Fire, and Intrusion (documents no. A6V10062425_a_en)**
- **Access Control (document no. A6V10062451_a_en)**
- **Video (document no. A6V10062457_a_en)**
- **OPC (document no. A6V10065253_a_en)**

This set of documents includes: the DMS8000 Network Fire and Intrusion Configuration guide, the DMS8000 Access Control Configuration guide, and the DMS8000 Video Configuration guide. The set is shipped with all FSP-DMS products and contains information about installing Composer, connecting and activating the hardware (dongle) key, setting up a new project, and configuring the networks and sub-systems supported by DMS8000 products. This should be used in conjunction with the ICC guide.

DMS8000 Graphical Map Configuration Guide (document no. A6V10062441_a_en)

This manual described in details the MM8000 graphic editor.

Composer Technical Manual document no. A6V10062401_a_en)

This guide explains how to use Composer in general. It provides a reference to commands and instructions used during the system configuration. Note that the latest edition of this manual describes the new functions that the MP3.20 version Composer can provide.

MM8000 Localisation Guidelines (document no. A6V10062459_a_en)

This guide provides assistance with the localisation of the MM8000 MP3.20 software, including information about using the Catalyst tool.

Quick reference guides

These short guides (4 to 8 pages A5 format) can be used as reference papers for the most typical software functions. The list of available quick guides includes:

- Operation (document no. A6V10067779_a_en)
- Installation, Configuration Commissioning (doc.no.008598_d_en)
- Graphical maps (document no. 008906_b_en)
- Composer Configuration (document no. A6V10067783_a_en)

Release Notes (document no. A6V10062509_a_en)

This document. It includes all information concerning MP4.15.

7 Customer support links & resources

7.1 Siemens BT FS

Updated in MP4.15

Our Customer Support Center intranet site at:

https://intranet10.sbt.siemens.com/about_bt/Business_Units/fs/Customer+Support+Center/?languagecode=en

provides useful information and links. In the Online Support section of this intranet page, software downloads and known product issues can be found in the PSP (password-protected Product Support Platform).

→ The support mailbox is: fs.support.sbt@siemens.com.

7.2 Microsoft

General support about Microsoft Windows can be found at:

→ <http://support.microsoft.com/directory/>

7.3 Adobe Acrobat

To view the PDF document is necessary to install the program Adobe Acrobat Reader. You can find its free version at:

→ <http://www.adobe.com/products/acrobat/readstep.html>

Siemens Switzerland Ltd
Building Technologies Group
International Headquarters
Fire Safety & Security Products
Gubelstrasse 22
CH-6301 Zug
Tel +41 41 724 24 24
Fax +41 41 724 35 22
www.sbt.siemens.com