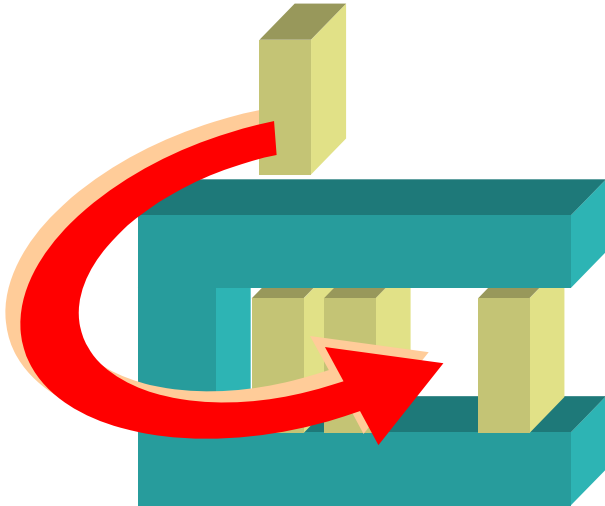


SIEMENS



MM8000 MP3.20

MM8000 MP4.xx

LIST Fire Control Unit

Add-on module

Installation, Configuration,
and Operations guide

Building Technologies

Fire safety & Security Products

Data and design subject to change without notice. / Supply subject to availability.

© 2010 Copyright by
Siemens Switzerland Ltd

We reserve all rights in this document and in the subject thereof. By acceptance of the document the recipient acknowledges these rights and undertakes not to publish the document nor the subject thereof in full or in part, nor to make them available to any third party without our prior express written authorization, nor to use it for any purpose other than for which it was delivered to him.

About this document.....	1
1 Introduction	3
1.1 Model and version supported.....	3
2 Installation	4
2.1 Distribution package	4
2.1.1 Installation checklist	4
2.2 Software installation	6
2.2.1 Requirements.....	6
2.2.2 Software License.....	6
2.2.3 LIST Add-on Installation.....	6
2.2.3.1 Installation on MM8000 MP3.20 and MP4.10.....	7
2.2.3.2 Installation on MM8000 MP4.15 and later	8
2.2.3.3 Multiple add-on's installation	9
2.2.4 LIST add-on uninstall	9
2.3 Communication network	10
2.3.1 NK82xx firmware download	10
3 Configuration.....	13
3.1 Configuration checklist.....	13
3.2 Configuration procedure	14
4 Operations	19

About this document

Purpose of this document

This manual is a guide to the installation, configuration, and operations for the MM8000 Management Stations that includes the LIST fire control units. It presents the Add-on module for the LIST support.

Individuals performing the operations described in this manual are expected to have prior expertise and training in the field of safety and security, at least a moderate level of familiarity with the Siemens Building Technologies product line, and experience with the installation, configuration, and commissioning of security management systems.

Scope

This document applies to the MM8000 Management Station MP4.20 and can be also used for MM8000 MP3.20 and in general for MP4.xx.

Modification index

Document index	Date	Notes
A6V10238692_a_en	06.2009	Corresponds to version MP4.20 of the MM8000 Software (new Add-on Manager for software installation).
009248_a_en	09.2006	Corresponds to version MP3.20 of the MM8000 Software

Reference documents

The **DMS8000 Documentation Resource Information Guide** document assembles in one place important information regarding documentation resources. It contains the following:

- Comprehensive definitions of the target audiences for FS DMS documents
- Training program information including the Siemens intranet link
- A complete list of all available DMS8000 documents
- Instructions for how to obtain a document via the Siemens intranet using the STEP Documentation Repository System
- A map of relevant documents for each target audience group
- Customer Support links & resources
- A glossary containing definitions of all terms and acronyms used in DMS8000 documentation

To access the **DMS8000 Documentation Resource Information Guide** (STEP #A6V10089056), go to the link and follow the instructions below:

<https://workspace.sbt.siemens.com/content/00001123/default.aspx>



1. Click on the **STEP WEB Client** image:
2. Choose **04 Fire -3F** from the **Product Segment** box and select **Activate filter**.
3. Select **All** in the **Documents** section of the **Quick Search** page and then select **Advanced Search**.
4. Enter the document number in the **Brochure No.** field (e.g. A6V10089056) and press **Enter**.

Operational and safety regulations



Before beginning work on the MM8000 Management Station for the Autronica BS, you must have read and understood the Operational and Safety Regulations included in the following documents:

- A6V10062425 - DMS8000 Connectivity Configuration Guide.
 - A6V10062413 - MM8000 Installation, Configuration and Commissioning.
 - A6V10062437 - NK8000 Installation, Configuration and Commissioning.
-

Liability disclaimer for damage or injuries

Before products are delivered, they are tested to ensure they function correctly when used properly. Siemens disclaims all liability for damage or injuries caused by the incorrect application of the instructions, or the disregard of danger advisories. This disclaimer applies in particular to personal injuries or damage caused by:

- Improper and/or incorrect use.
- Disregard of safety instructions in the documentation or on the product.
- Poor maintenance or a lack of maintenance.

We have checked the contents of this manual for agreement with the hardware and software described. Since deviations cannot be precluded entirely, we cannot guarantee full agreement. However, the data in this manual are reviewed regularly and any necessary corrections included in subsequent editions. Suggestions for improvement are welcome.

1 Introduction

The LIST control unit is a fire system capable of handling special sensor cables applied in critical environments.

The LIST control unit can communicate over a serial line to the NK82xx units. The communication protocol is based on the Siemens Procedure 3964(R) and requires a specific NK82xx firmware.

1.1 Model and version supported

MM8000 MP3.20 and later, equipped with LIST add-on extensions, can support LIST SCU 2000.

1.2 What has been changed in MP4.20

Here is the list of modifications included in MP4.20 for new functions and software improvements.

Section, Page	Modifications
	New NK823x units
2.2.3.2, p.8	New Add-on Manager used for installing the add-on software in MM8000 MP4.15 and later

2 Installation

2.1 Distribution package

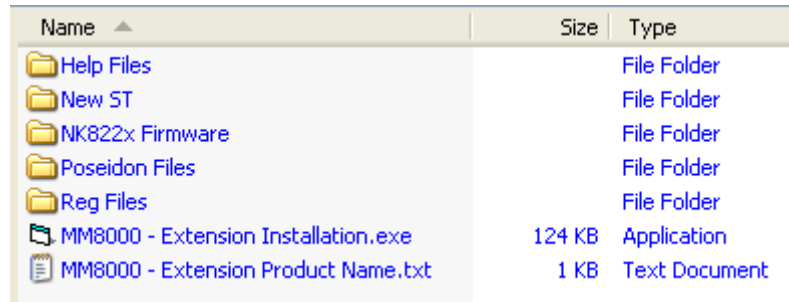
The M8000 software for the LIST support is distributed as an add-on package, to be installed on the stations including the Composer tool (client-only and FEP stations are therefore excluded) after the standard MM8000 Setup.

The package is named: **MM8000 MPx.xx - System Extension N.05 (List Vy.yy)** and is made up by an installation kit of a few files.

Installation kit

The installation kit includes (Fig. 1):

- The new **Help Files**, describing the LIST configuration procedures.
- The new Composer Subsystem Tool (**New ST**) for the LIST models.
- The firmware for the NK82xx units (**NK822x Firmware**), i.e. the DLL module supporting the LIST protocol.
- The **Poseidon Files**, including the definitions of new MM8000 data structures.
- The registry file folder, containing a command for registering the add-on package.
- The installation utility: the **MM8000 – ST extension Installation.exe** program.
- The extension name text file; namely: **MM8000 – ST extension Product Name**.



Name	Size	Type
Help Files		File Folder
New ST		File Folder
NK822x Firmware		File Folder
Poseidon Files		File Folder
Reg Files		File Folder
MM8000 - Extension Installation.exe	124 KB	Application
MM8000 - Extension Product Name.txt	1 KB	Text Document

Fig. 1 Installation kit

2.1.1 Installation checklist

ITEMS NEEDED FOR THE INSTALLATION

- The MM8000 Setup kit
- The **MM8000 MPx.xx - System Extension N.05 (List Vy.yy)** installation kit
- The MM8000 hardware key (dongle)
- The MM8000 license PAK code (or the REG file that contains it)

INSTALLATION CHECKLIST

- 1. Install the MM8000 hardware key
→ refer to the DMS8000 Connectivity Configuration Guide
- 2. Install the MM8000 Software
→ refer to the MM8000 Installation, Configuration and Commissioning Manual
- 3. Install the NK8000 units (NK82xx)
→ refer to the NK8000 Installation, Configuration and Commissioning Manual
- 4. On the station(s) including the configuration capability (Composer tool),
install the LIST add-on package p. 6
- 5. Install the new Subsystem Tool p. 7
- 6. Update the NK8000 firmware p. 10

2.2 Software installation

2.2.1 Requirements

The support for LIST does not add any special requirements to the standard MM8000. Therefore, software and hardware requirements are the same as for the base MM8000 software, as described in the document no. A6V10062413, MM8000 Installation, Configuration and Commissioning.

As far the NK8000 network is concerned, the requirements are described in the document no. A6V10062437, NK8000 Installation, Configuration and Commissioning.

Note that MM8000 must be properly installed before the add-on can be installed. For more information on the MM8000 installation, please see the mentioned A6V10062413 document.

This LIST add-on package is designed to work with MM8000 MP3.20 and higher. Contact FSP-DMS support to verify the compatibility with other versions.

2.2.2 Software License

An additional license is required to run the LIST module. On top of the base MM8000 license codes, a specific PAK is therefore needed.

Therefore, the required license includes:

- WW8000 Composer (project configuration and download): Composer License or Service key.
- NS8210 driver: NK8000 connections, indicating the number of NK82xx units.
This license is required for enabling the network driver and the NK82xx units communicating with the LIST control units.
- MM8000 core, no. of subsystems
This license should include the number of LIST control units.
- MM8000 core, no. of devices.
This license should include the number of LIST physical objects (detectors, auxiliary and control outputs)
- LIST add-on license
→ Check detailed sales policy for your country

Other licenses, covering more MM8000 options, may or may not be used and they are not related to the LIST support.

2.2.3 LIST Add-on Installation

The following are the installation procedures for the MODBUS add-on module.



Depending on the MM8000 version a different installation procedure is foreseen. Please select the appropriate procedure.

2.2.3.1 Installation on MM8000 MP3.20 and MP4.10

1. Copying files

The add-on installation is quite simple. The installation kit includes the **MM8000 – ST extension Installation.exe** utility (Fig. 2 below). Just run this program and the add-on files will be copied onto the local hard disk in the appropriate folders.

Name	Size	Type
Custom Command Timeout		File Folder
Default Project		File Folder
Help Files		File Folder
New ST		File Folder
NK822x Firmware		File Folder
Poseidon Files		File Folder
MM8000 - ST extension Installation.exe	56 KB	Application
MM8000 - ST extension Product Name.txt	1 KB	Text Document

Fig. 2 Starting the add-on installation

2. Installing the Subsystem Tool

Composer requires that the tools are installed using a specific procedure. Therefore, a small utility is also launched in order to add the LIST Subsystem Tool (ST) in to the Composer tool set.

The utility shows as illustrated in Fig. 3. Click OK to proceed.

The installation procedure requires the account name and password of the MM8000 “internal user”. In most cases, the default account parameters, provided in the installation window, do not need to be changed. However, if during the previous MM8000 installation a different account was specified, then you need to specify the customised username and password.

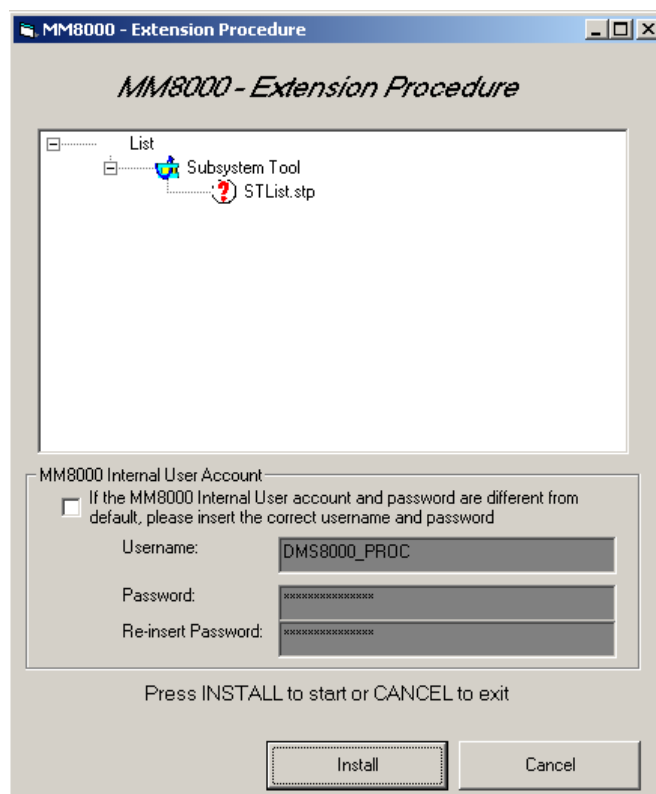


Fig. 3 Installing the LIST Subsystem Tool

In few seconds, the tool is installed in Composer. The name of the new tool appears in the list (Fig. 4). At this point, click Exit to quit.

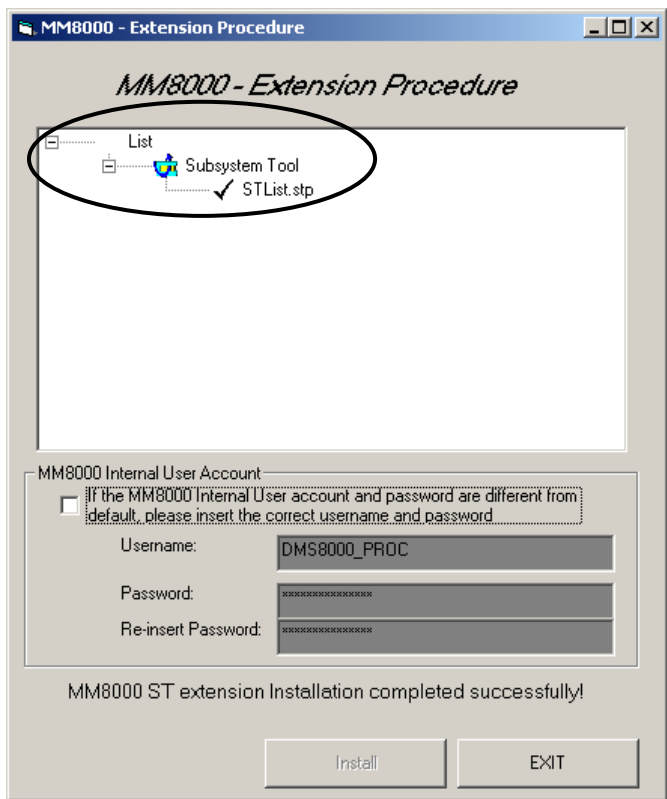


Fig. 4 Closing the tool installation

2.2.3.2 Installation on MM8000 MP4.15 and later

A specific application, the Add-on manager, is provided in MM8000 MP4.15 and higher, and allows for installing and updating the add-on modules. The application supports the installation of add-ons developed for all MM8000 versions starting from MP4.15.

The following describes the installation procedure.

1. Start Add-on Manager.

From the Windows Start menu, select the following:

Start → DMS8000 → Tools → Add-on Manager

The Add-on Manager window appears (Fig. 5).

2. In the list of add-ons, select the name of the module that you wish to install

OR (if the name of the add-on is not in the list on the screen):

click the **Browse ...** button, locate the installation files of the add-on module and select the text file (**Extension Product Name.txt**) in the root folder (Fig. 6).

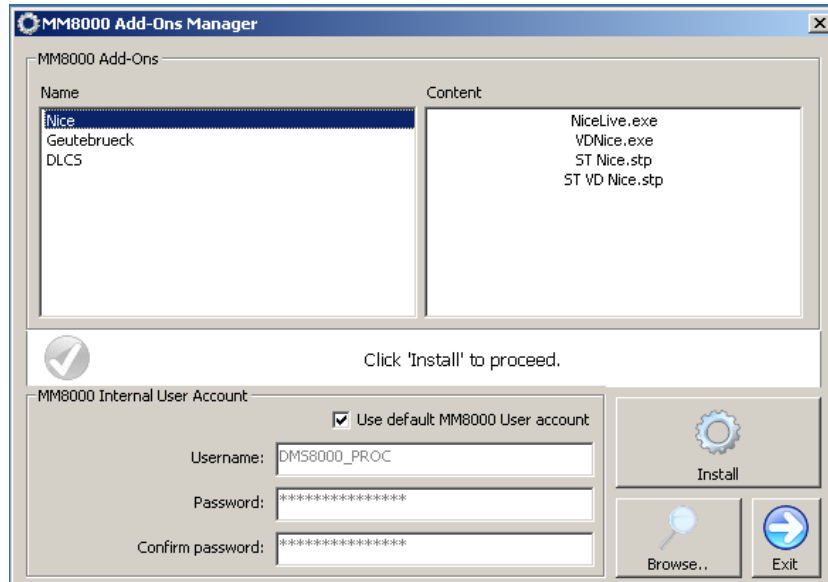


Fig. 5 Add-on Manager Window

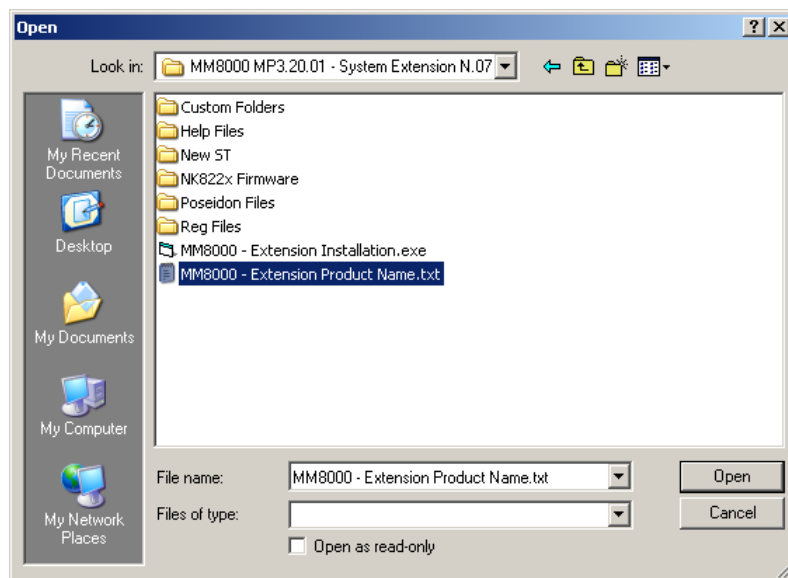


Fig. 6 Selecting the MM8000 Extension Product Name file

3. If your MM8000 installation includes a customized MM8000 internal account, then deselect the checkbox **Use default MM8000 User account** and specify the customized username and password.
4. Click **Install** (or **Update** if a previous version is detected).

2.2.3.3 Multiple add-on's installation

In general, it is possible to install multiple add-on packages and benefit of their combined functionalities. However, we recommend care in the firmware update (see next chapter).

2.2.4 LIST add-on uninstall

The LIST add-on module cannot be uninstalled.

2.3 Communication network

The LIST is connected to the MM8000 system by means of the NK8000 network and namely via the NK8222, NK8223, or NK8225 units.

In order to communicate with the LIST, the NK82xx units should however be equipped with a new firmware that is included in the installation package as an additional component (DLL) to be added to the standard firmware file set.

The software installation procedure provides to copy the firmware files (a compressed ZIP archive) in the **NK82xx – Firmware** folder of the MM8000. From there, the files can be downloaded to the NK82xx units using standard Composer commands. The required procedure is described here below.

2.3.1 NK82xx firmware download

The following are the download procedures for the NK82xx firmware supporting the LIST communication protocol.

Note: It is assumed that the NK82xx are physically installed, powered on, and communicating over the network. For more information about the NK8000 installation, please see the document no. A6V10062425, DMS8000 Network, Fire and Intrusion Connectivity Configuration Guide. More advanced technical issues are also discussed in the document no. A6V10062437, NK8000 Installation, Configuration and Commissioning.

Also, you should have available the Composer project that includes the NK8000 network and all the NK82xx units.

1. Verifying the connection with NK82xx

The NK82xx download requires that the TCP/IP connection between the host PC and the NK82xx is working properly. In the Windows Command Prompt window, you can check easily this connection using the “Ping” command:

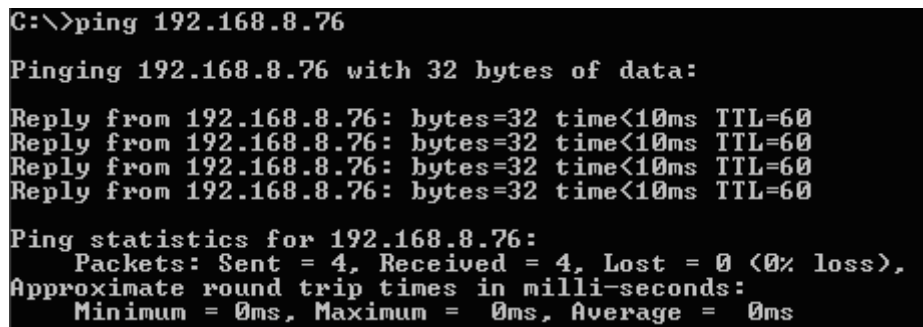
Ping n.n.n.n

where **n.n.n.n** is the IP address of the NK82xx unit, e.g. 168.123.8.76.

If the IP connection is good, the message text looks like the ones in Fig. 7, i.e.:

Reply from n.n.n.n: bytes=... time ... TTL=...

If the IP connection is not working for any reason, different messages may appear (Request timed out, Destination net unreachable, etc.) In these cases, verify the network settings and cabling and try again.



```
C:\>ping 192.168.8.76

Pinging 192.168.8.76 with 32 bytes of data:

Reply from 192.168.8.76: bytes=32 time<10ms TTL=60
Reply from 192.168.8.76: bytes=32 time<10ms TTL=60
Reply from 192.168.8.76: bytes=32 time<10ms TTL=60
Reply from 192.168.8.76: bytes=32 time<10ms TTL=60

Ping statistics for 192.168.8.76:
    Packets: Sent = 4, Received = 4, Lost = 0 (0% loss),
    Approximate round trip times in milli-seconds:
        Minimum = 0ms, Maximum = 0ms, Average = 0ms
```

Fig. 7 Checking IP connection

2. Start Composer and open the project that includes the LIST units.

3. Expand the **Channel collection** folder in:

Supervision System Settings → MM8000 System → Physical configuration → Station (or FEP) → Channel collection

4. Select the **NS8210 driver** node and then the **Download** tab (Fig. 8).

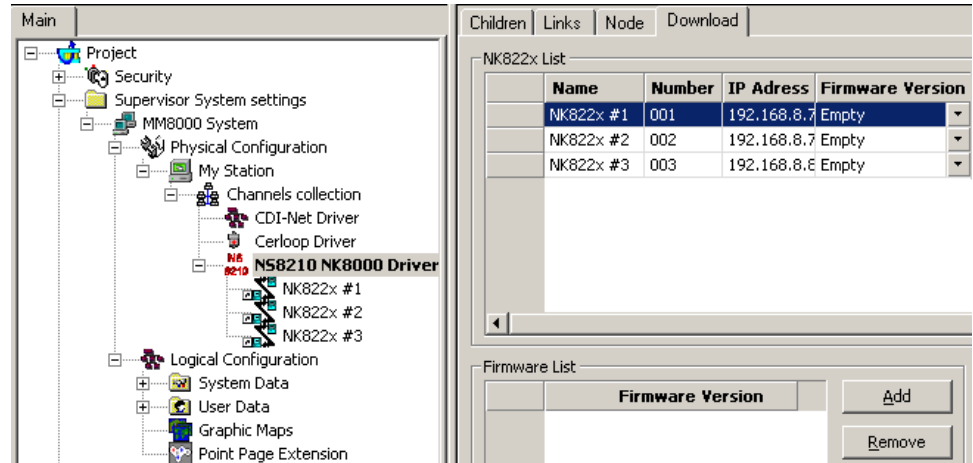


Fig. 8 Download tab

5. Select all the branches (NK82xx) in the list located in the upper part of the form.

Note: In order to select multiple branches, keep the CTRL key pressed while you make your selections.

See the following Fig. 9.

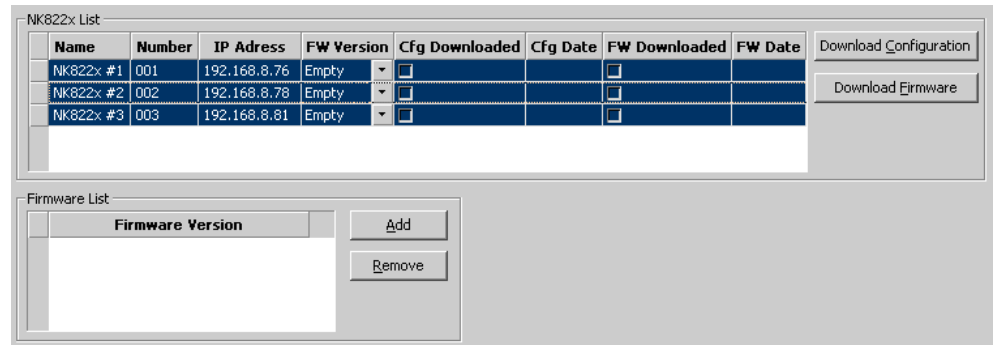


Fig. 9 Selecting the NK82xx

6. Add the new firmware version:

- Click **Add**, then browse and locate the additional firmware file in:
<MM8000 installation folder>NK82xx – Firmware
- Then, click the file:
Nk82xx_LIST__x.xx-xx_05.zip
with x.xx-xx being the software version.
- And finally click **Open** (Fig. 10).
→ In a few moments, the new firmware shows in the Firmware List (Fig. 11).

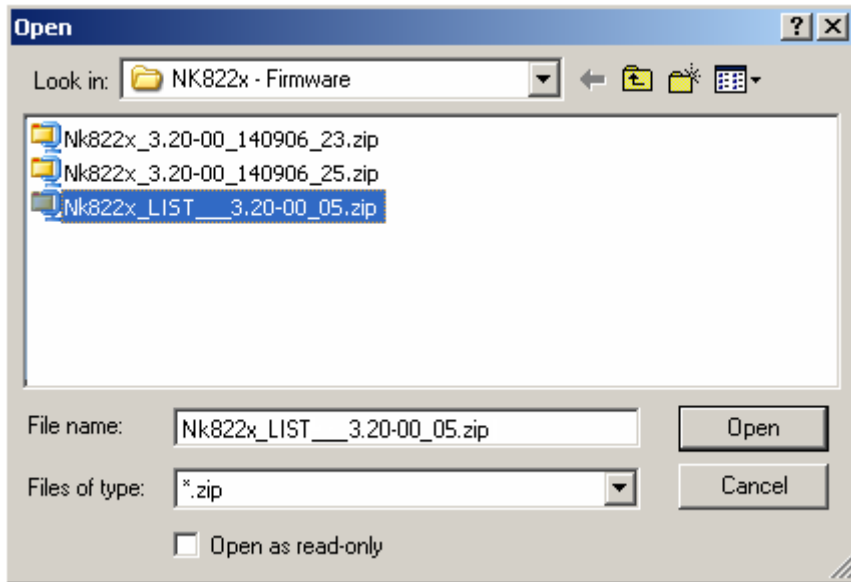


Fig. 10 Opening the new NK822x firmware files

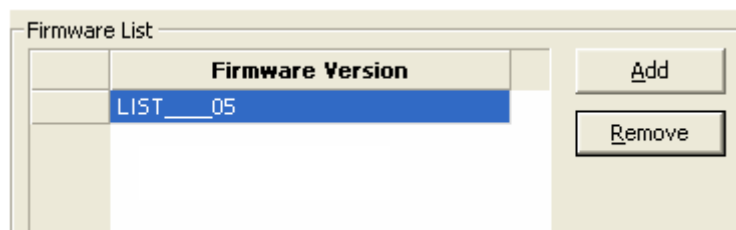


Fig. 11 New NK822x firmware in the Firmware List



Note that the “_05” suffix in the firmware name indicates the add-on index (05 for the LIST).

7. Select the new firmware version in the Firmware List.
8. Click the button **Download Firmware**.
 - *The download procedure starts. The new firmware is downloaded to the NK822x units via FTP (File Transfer Protocol) services over the network.*
9. Ensure that you have successfully completed all downloads:
 - Verify that the **FW Downloaded** check boxes contain **X**'s.
10. That completes the NK822x firmware download.
 - Note that the NK822x configuration will also need to be downloaded after having configured the LIST units in Composer (see pag.17).



Downloading multiple firmware

In case multiple add-on packages have been installed, then all the associated firmware files can be safely downloaded in sequence (each of them being a single additional DLL) as long as the base NK822x version is the same (e.g. “...3.20...”). Please check version and date in the firmware list (Fig. 11) before selecting the file to download. Also, get informed about latest compatibility issues in the most recent NK8000 Release Notes.

3 Configuration

3.1 Configuration checklist

Verify that you have satisfied the items needed in the first checklist before proceeding to the configuration checklist that follows.

ITEMS NEEDED FOR CONFIGURATION

- The number of LIST systems
- Exact information on the LIST internal configuration (units, zones, detectors).
- The exact connection to the NK8000 unit (NK82xx).
- Plug-ins needed:
 - Plug-in #354701
 This is installed during the installation procedure.

CONFIGURING A LIST CONTROL UNIT

- 1. Add the folder(s) required for identifying the location of the LIST in the project structure tree. p. 14
- 2. Add the LIST control unit node to the new folder p. 14
- 3. Configure the LIST objects: units, zones, detectors p. 14
- 4. Link the LIST to the communication network p. 16
- 5. Repeat steps above for all the LIST units in the project
- 6. Download the configuration p. 17


3.2 Configuration procedure

The following are the configuration procedures for the LIST control unit:

Adding the folder for the LIST system

1. Open the Composer project.
2. Create a folder for the control unit.

Adding the LIST node

1. Select the new folder.
2. Select the LIST icon  (see Fig. 12):
 → *The new node is added to the project structure.*

By default, the node will be named **List Fire Detection System #nn**). You can customise the text by clicking once on the name, typing a new name, and pressing **Enter**.

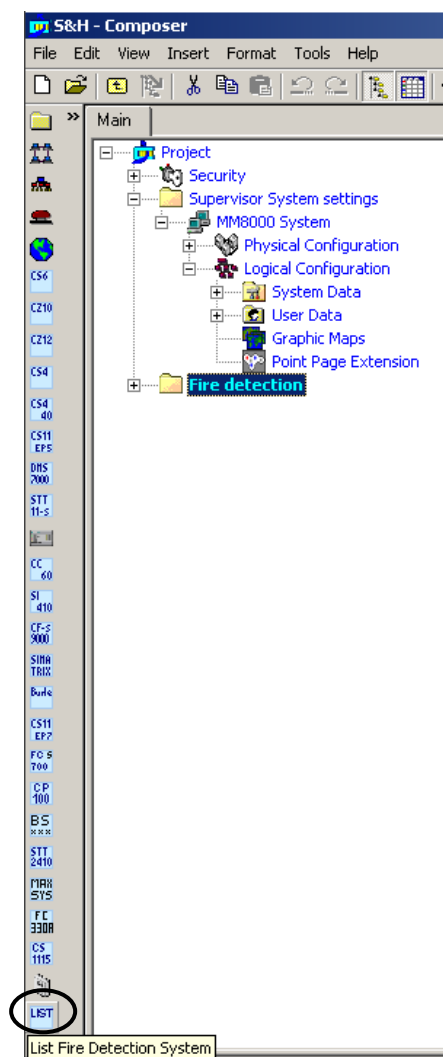


Fig. 12 Adding an LIST subsystem

Detailed unit configuration

You now have to define the LIST internal structure to reflect the actual control unit configuration. By default, the LIST structure includes a physical and a logical tree folder. The following list shows where different objects are located in the physical and logical trees:

- Physical tree:
 - Units (up to 32)
- Logical tree:
 - Zones (up to 64)
 - Detectors (up to 2048)



When adding multiple objects, e.g. the fire detectors, you can profit of the specific Composer function that allows inserting a series of objects in one shot. Just press the Shift key and click the object icon (or select the corresponding Insert menu); in the form that appears, enter the number of object to insert and then confirm.

Configuration procedure

1. Open Select the LIST node and open the sub-tree.
2. Select the sub-folder: **Physical tree**.
 - *The Composer toolbar, on the left hand side of the screen, is populated with the icons associated to the objects you can to add the selected sub-folder.*
3. Click the **Unit** icon (Fig. 13) to add as many units as required by your configuration.
 - *The new objects are added to the tree.*

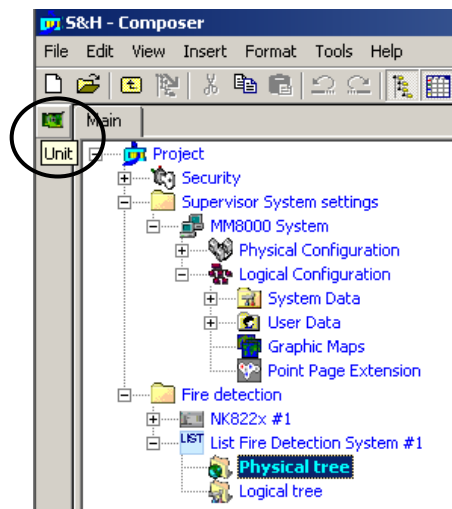


Fig. 13 Adding Unit objects in the Physical Tree

4. Select the sub-folder **Logical Tree**.
 - *The Composer toolbar, on the left hand side of the screen, is populated with the icons associated to the objects you can to add the selected sub-folder.*
5. Click the **Zone** icon (Fig. 14) to add as many zones as required by your configuration.
 - *The new objects are added to the tree.*
6. Select the zone nodes and add the detectors associated to each zone. (Fig. 15)

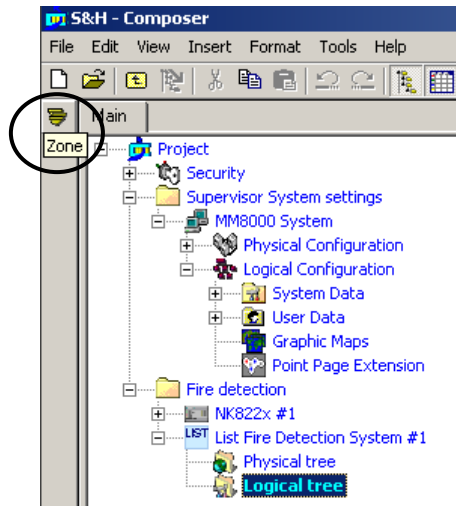


Fig. 14 Adding Zone objects in the Logical Tree

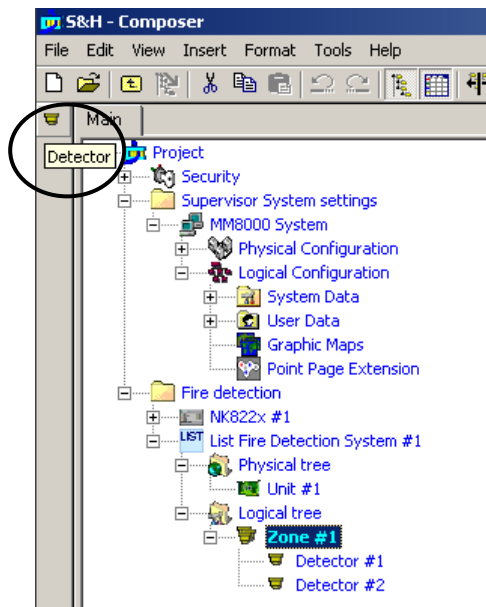


Fig. 15 Adding detectors to a Zone



Linking the LIST to the Communication network

1. Open NK82xx sub-folders

Expand the NK8000 network folders until you reach the node that represents the NK882x COM port that is physically connected to the LIST.

2. Select the LIST node.

3. Drag and drop the LIST node to the network COM port (see Fig. 16).

Note: Composer helps you recognise the valid link by displaying a shortcut Link icon  instead of the circle No-link icon .

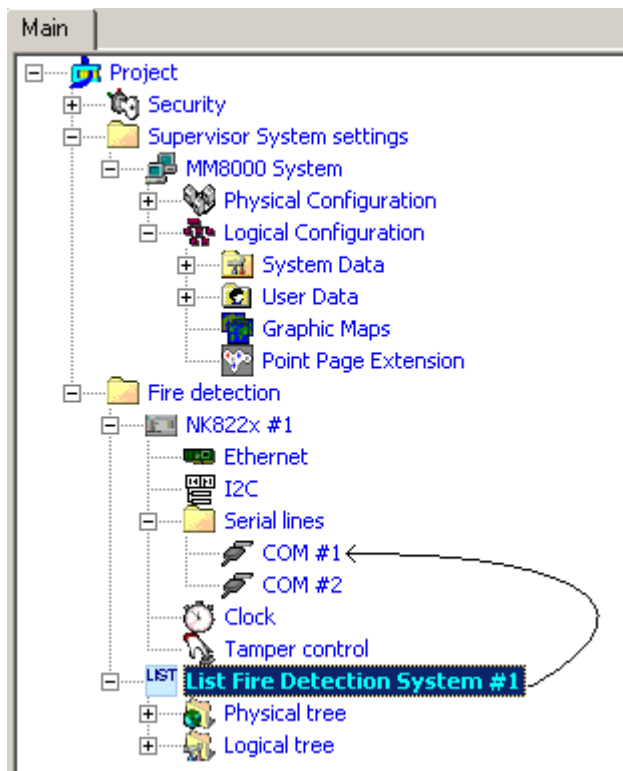


Fig. 16 Link LIST to the NK8000 network

→ When the link is established, a new node appears on the structure tree, and its properties can be seen on the Link tab of both the connected nodes.

Download the MM8000 configuration

Before operating with the new MM8000 configuration, you need to download it. In Composer, the download command is available in the Tools menu. The preparation to the download is discussed in the document no. 006799, MM8000 Installation, Configuration and Commissioning.

Downloading the NK82xx configuration

After any modifications on the LIST units, a new configuration download is required for the NK82xx devices.



Warning: the NK82xx units handle the LIST messages interpretation for MM8000. In order to do so, the NK82xx needs to be downloaded with the updated configuration of the management stations, even after a minor modification to the subsystem structures (e.g.: after having imported an updated metafile including new objects). Depending on the specific configuration change, failing to download the NK82xx units may affect the correct behaviour of the telegram interpretation and result in missing event signalling. In general, we recommend including an NK82x download after any change in the configuration.

The download procedure can be started in two ways:

1. In the **Download** tab of the **NS8210 driver** node:
 - Select:
 - Supervision System Settings → MM8000 System → Physical configuration → Station (or FEP) → Channel collection → NK8210 driver**
 - see Fig. 8 above
 - in the list that shows up, select the NK82xx units

Note: In order to select multiple branches, keep the CTRL key pressed while you make your selections.

- click the button **Download Configuration**
 - ensure that you have successfully completed all downloads
 - Verify that the **Cfg Downloaded** checkboxes contain **X**'s see Fig. 9 above
2. In the **NS822x** node (select all units one after the other):
- Right click the node
 - In the menu, click **Node commands** → **Download file CNF**

4 Operations

MM8000 operations are described in the document no. 6798, MM8000 Operation Manual. Specifically, the possible events related to LIST control units are listed in the table below.

Node	Alarms	Faults	Other events
LIST unit		Fault Not reachable	Advisory (Silence) Exclusion (Disabled)
Zone	Severe alarm (Fire alarm) Alarm (Fire pre-alarm)	Fault	
Detector	Severe alarm (Fire alarm) Alarm (Fire pre-alarm)	Fault	
Unit		Fault	

Note: all objects can also be affected by the Maintenance event according to the MM8000 function that allows setting any part of the system tree in maintenance mode and divert the associated events into a separate list.

Siemens Switzerland Ltd
Building Technologies Group
International Headquarters
Fire Safety & Security Products
Gubelstrasse 22
CH-6301 Zug
Tel +41 41 724 24 24
Fax +41 41 724 35 22
www.sbt.siemens.com