

# SIEMENS



## **HOTEL SOLUTION** **FOS ↔ HOTEL SOLUTION link (HotFOS)** **User's guide**

Siemens Switzerland Ltd.  
Building Technologies Group  
International Headquarters  
Gubelstrasse 22  
CH-6301 Zug  
Tel. +41 41-724 24 24  
Fax +41 41-724 35 22  
[www.siemens.com/sbt](http://www.siemens.com/sbt)

© 2005-2008 Siemens Switzerland Ltd.  
Subject to change

# Table of contents

---

1	General notes .....	5
1.1	About this document .....	5
1.2	Terms and abbreviations .....	5
1.3	Typographical conventions .....	6
2	Functions of HotFOS .....	7
2.1	General description .....	7
2.2	System requirements .....	7
3	Installation .....	8
4	Configuration .....	9
4.1	Starting Hotel Solution Configurator .....	9
4.2	Adding HotFOS .....	10
4.3	Starting and shutting down the HotFOS service manually .....	11
4.4	Configuring the HotFOS service .....	12
4.5	Removing the HotFOS service .....	12
4.6	Other functions .....	12
5	Operating the link .....	13
5.1	The main menu .....	13



# 1 General notes

## 1.1 About this document

---

The software and associated documentation are the subject of a license agreement. Before using the software, you should read this license agreement, which explains your rights and obligations.

The software described in this manual may be used only in accordance with the terms set out in the license agreement. Neither the original software nor copies of the software may be distributed to third parties.

This manual may not be copied, translated, transposed to an electronic medium or converted into machine-readable form, in whole or in part, without the express permission of Siemens Building Technologies AG.

Copyright © 2004 Siemens Building Technologies AG.  
All rights reserved.

## 1.2 Terms and abbreviations

---

Terms and abbreviations	Description
FOS	<u>F</u> ront <u>O</u> ffice <u>S</u> ystem: A software solution covering the commercial aspects of running a hotel
Datagram	Information is exchanged by means of datagrams (also referred to as "records").
HotFOS	FOS ⇔ HOTEL SOLUTION link

## 1.3 Typographical conventions

---

The typographical conventions used in this manual are described in the table below. We have adopted these conventions to make it as easy as possible for you to read the manual, so please take a few moments to read through the table.

<b>Description</b>	<b>Example</b>
Text to be entered by the user is printed in italics	<b>setup</b>
Italics are also used for special terms and to emphasize specific points	<i>Term</i>
Placeholders in pieces of code and examples of files are also shown in italics	<i>Variable</i>
Path information and file names are shown in Courier	<code>Format.exe</code>
The names of keys and key combinations are printed in angular brackets. The "+" sign indicates that the keys specified should be pressed simultaneously.	<code>&lt;Ctrl&gt;+&lt;V&gt;</code>
The font Courier is used for pieces of code and examples of files containing text.	<code>Courier</code>
Text in pieces of code, if shown in rectangular brackets, indicates optional information.	<code>[Option 1]</code>
Text in pieces of code, if shown in angular brackets, indicates a compulsory input.	<code>&lt;MandatoryInput&gt;</code>
Curly brackets containing information divided by a vertical bar are used when there is a choice of several options.	<code>{ 0   1 }</code>

## 2 Functions of HotFOS

### 2.1 General description

---

This document describes the installation and operation of the *FOS ⇔ HOTEL SOLUTION link* (HotFOS).

HotFOS is a software product which links the front-office software (FOS), supplied by Hogatex or Bosch, to the HOTEL SOLUTION software.

The link software transfers check-in and check-out data and the movements of a hotel guest within the hotel, from the Hogatex or Bosch system to the HOTEL SOLUTION system. This data is used to create keys, and allow or deny access to rooms.

If no data has been transferred for some time, current data from the Hogatex or Bosch system can be transmitted to the HOTEL SOLUTION system in a database synchronization routine initiated by the Hogatex or Bosch system.

It is also possible to implement reservation management and energy management in the Hogatex or Bosch software.

### 2.2 System requirements

---

#### Hardware

Minimum PC specification

- Standard PC hardware, suitable for Microsoft Windows XP, with 512 MB RAM and 80 GB hard disk
- CD ROM drive

#### Software

- Operating system: Windows XP Professional with Service Pack 1 or higher
- Sybase SQL Anywhere 8 database client with ODBC driver must be installed

HOTEL SOLUTION Version 1.0

HOTEL SOLUTION database 15.0

TCP/IP network connection to the front-office system (Port 5100)

### 3 Installation

HotFOS is installed automatically by running the setup program.

To do this, insert the HOTEL SOLUTION CD ROM.

Select the required HotFOS link component and continue installation.



Caution

**Shut down all HOTEL SOLUTION software on your computer before running setup.**

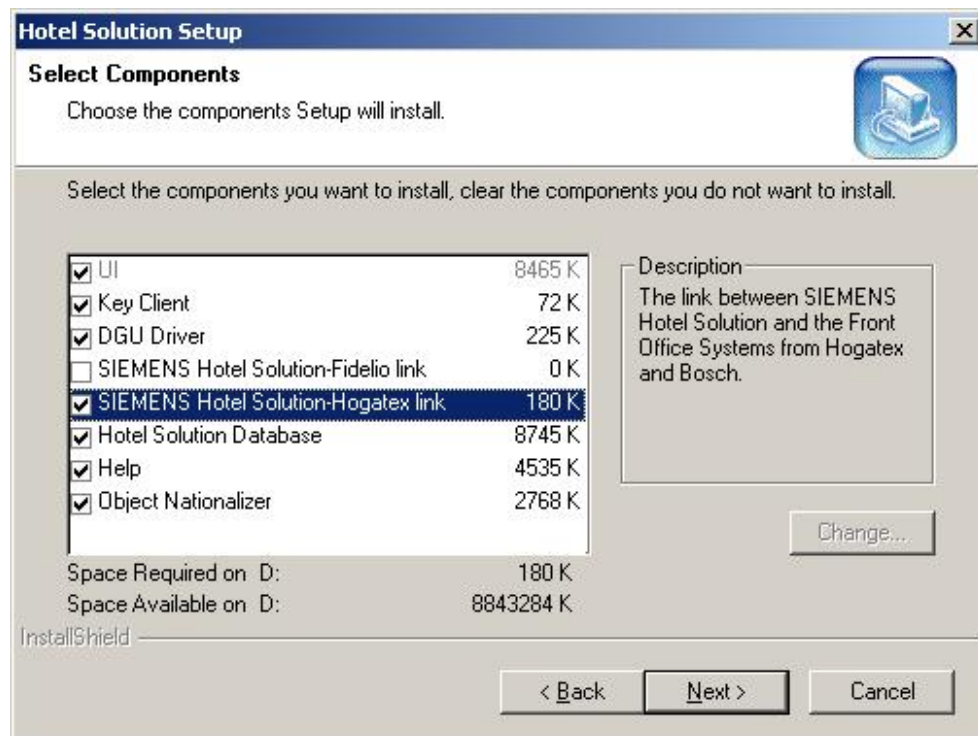


Fig. 3-1: Settings for HotFOS setup

When setup is complete, the computer will restart automatically.

When the computer is restarted and the user logs in, the HOTEL SOLUTION Configuration Utility starts automatically. The next section describes how to configure HotFOS with this program module.



# 4 Configuration

## 4.1 Starting Hotel Solution Configurator

The program starts automatically after installation. Subsequently, it can be started like any other program in the Windows XP interface, by double-clicking the icon.

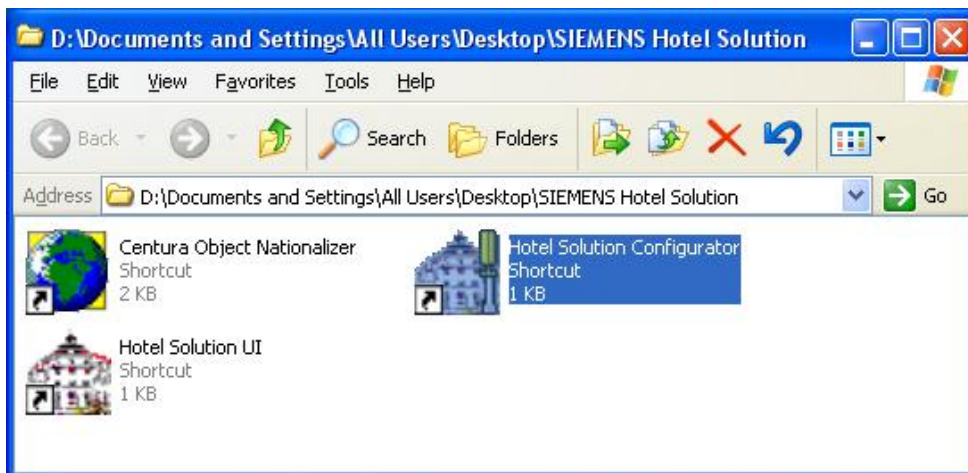


Fig. 4-1: Folder containing the HSConfig icon

This leads to a dialog box displaying all the services available with HOTEL SOLUTION. The text "Running" is displayed in brackets against those services which have already been installed.

The Hotel Solution Configurator supports the setup of the HotFOS link.

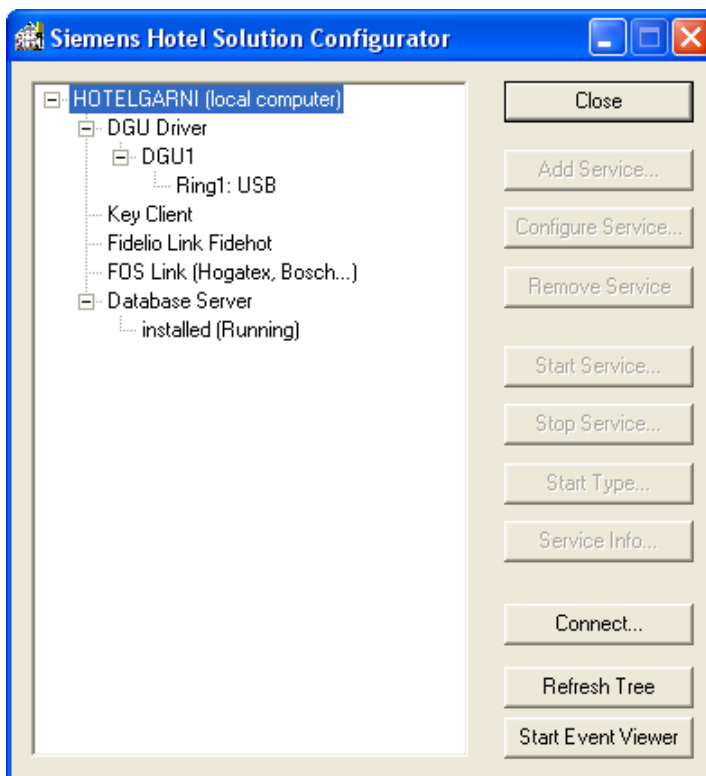


Fig. 4-2: "Hotel Solution Configuration Utility" after start-up

## 4.2 Adding HotFOS

To add these services, select "FOS Link (HogateX, Bosch...)" from the tree structure.

This activates the **Add Service** button.

Click **Add Service**. A dialog box for configuration of the HotFOS link software appears.

Two parameters can be set here:

- Datagram header
- Timeout for key creation

Datagram header

This depends on the front-office system in use. Refer to your FOS documentation to check the coding used to transmit the length of a datagram.

Timeout for key creation

This defines how long the link software will wait for a key to be created. When the timeout time expires, an error message is transmitted to the front-office system.

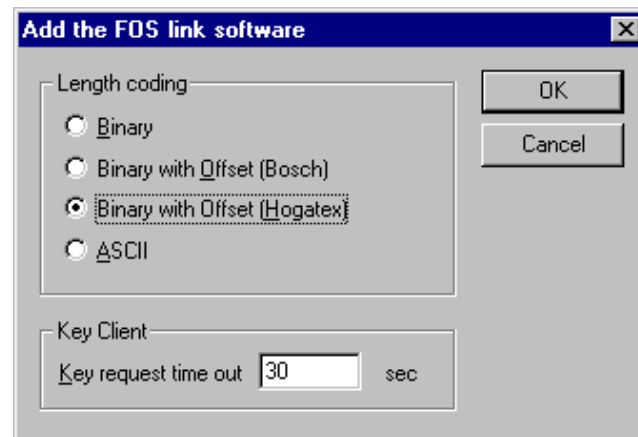


Fig. 4-3: Setting up HotFOS

Click **OK**. The tree structure now shows which HotFOS links have been set up:

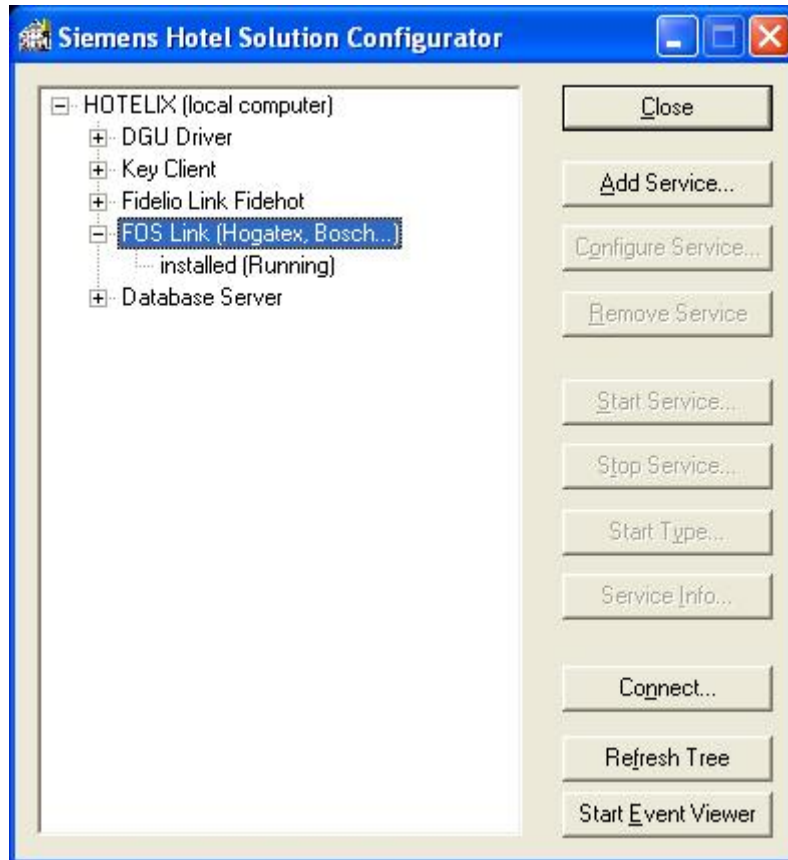


Fig. 4-4: HOTEL SOLUTION Configuration Utility with the new HotFOS setup

The HotFOS service is now configured on this computer, and will start automatically when the operating system is started.

### 4.3 Starting and shutting down the HotFOS service manually

If set up as described in the previous paragraph, HotFOS starts automatically whenever the system is restarted, and shuts down automatically when the computer is shut down. Alternatively, the link can be selected in the HOTEL SOLUTION Configuration Utility, and started by clicking the **Start Service** button or shut down by clicking **Stop Service**. If the link software cannot be started, an error message is recorded in the **windows XP Event Log**. If the service fails to start, the configuration utility may wait for it to start for two minutes. This relatively long period of time is imposed by the operating system and cannot be modified.

To stop a service manually, always use HOTEL SOLUTION Configuration Utility, as this ensures that the service shuts down properly.

If an attempt is made to shut down a service with the **Close** icon or menu option in the system menu, the service will display a warning message.

## 4.4 Configuring the HotFOS service

---

To change the configuration of the HotFOS service after it has been set up for the first time, shut down the link software and click **Configure Service**. A dialog box will appear in which you can modify the properties of the service.

To activate the changes, the service must be restarted.

## 4.5 Removing the HotFOS service

---

A previously installed service can be removed by clicking the **Remove Service** button.

## 4.6 Other functions

---

Other functions of the HOTEL SOLUTION Configuration Utility are described in the relevant user manual.

# 5 Operating the link

## 5.1 The main menu

After starting the HotFOS link, press any key to display the following:

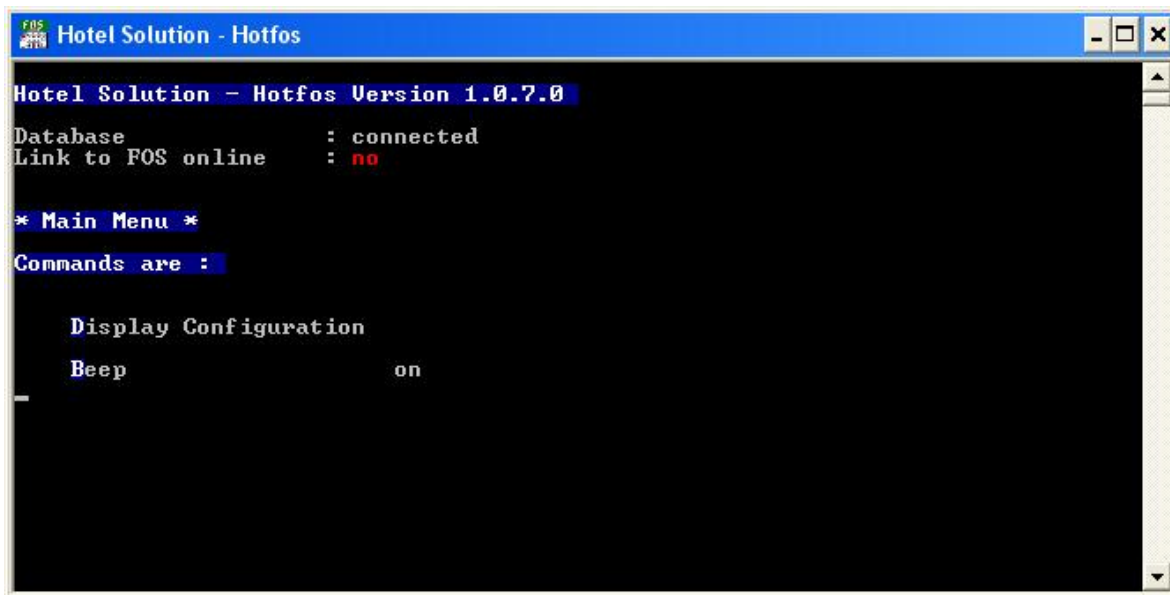


Fig. 5-1: Main menu of the HotFOS link

The status of the database connection and the FOS connection are shown in the upper third of the screen.

Press <D> to display the current configuration of HotFOS.

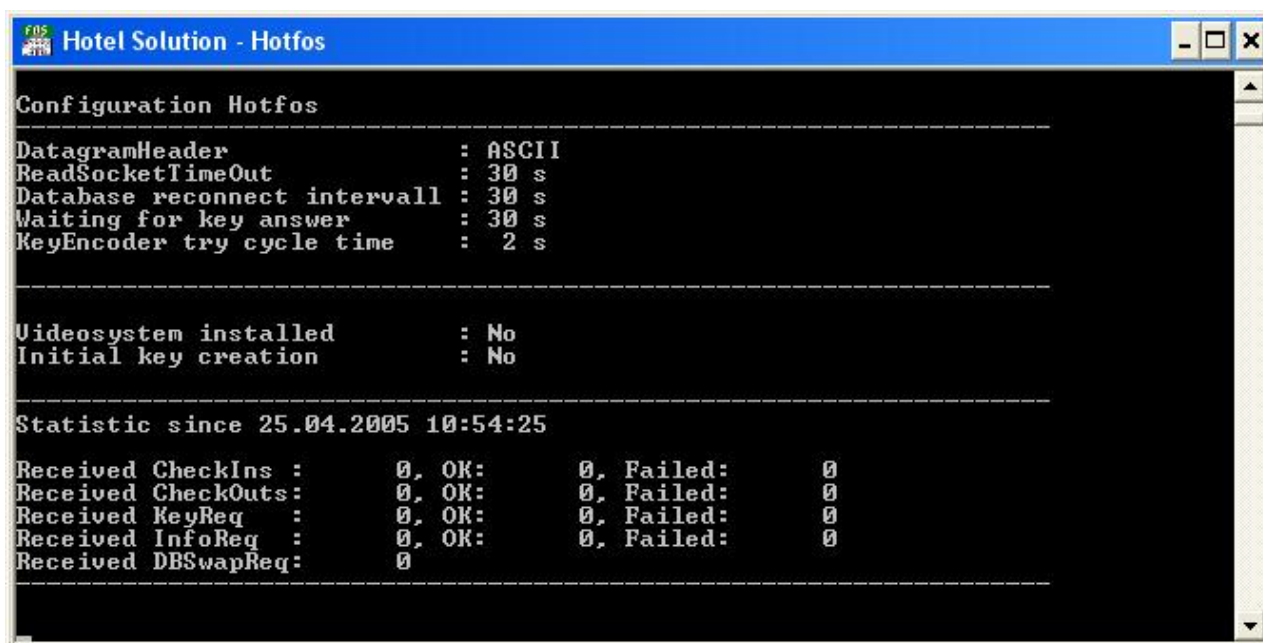


Fig. 5-2: HotFOS configuration data

The audible "beep", indicating a failure in the connection to the FOS or database, can be toggled on and off by pressing the <B> key.

Siemens Switzerland Ltd.  
Building Technologies Group  
International Headquarters  
Gubelstrasse 22  
CH-6301 Zug  
Tel. +41 41-724 24 24  
Fax +41 41-724 35 22  
[www.siemens.com/sbt](http://www.siemens.com/sbt)

© 2005-2008 Siemens Switzerland Ltd.  
Subject to change