

SIEMENS



MM8000 MP4.10-01 Management Station

Product Release Notes

Data and design subject to change without notice. / Supply subject to availability.
© 2008 Copyright by
Siemens Switzerland Ltd

We reserve all rights in this document and in the subject thereof. By acceptance of the document the recipient acknowledges these rights and undertakes not to publish the document nor the subject thereof in full or in part, nor to make them available to any third party without our prior express written authorization, nor to use it for any purpose other than for which it was delivered to him.

1	Introduction	4
1.1	MP4.10-01 at a glance	4
1.2	MP4.10 at a glance	4
2	What's new in MP4.10 releases	6
2.1	MP4.10-01 bug correction.....	6
2.2	MP4.10 features.....	8
2.3	Summary of connectivity options	11
2.3.1	SiPass	13
2.3.2	Video	14
3	Installation and configuration procedures	15
3.1	Software installation.....	15
3.1.1	New systems: installing MP4.10 and then 4.10-01	15
4	Updating from older releases	17
4.1	Software License.....	17
4.2	Localisation	17
4.3	Updating from MP2.xx.....	17
4.4	Updating from MP3.xx.....	17
5	Known issues in MP4.10	19
5.1	Installation	19
5.2	Configuration.....	21
5.3	Functionality	22
6	Documentation	27
6.1	MM8000 Sales documentation	27
6.2	MM8000 Technical documentation	28
6.2.1	MP4.10 documentation errata.....	30
7	Customer support links & resources.....	33
7.1	Siemens BT FS	33
7.2	Microsoft.....	33
7.2.1	Windows 2000.....	33
7.2.2	Windows XP	33
7.3	Adobe Acrobat	33
8	Appendix A: NICE support.....	34
8.1	Introduction	34
8.2	Installation	34
8.3	Configuration.....	35

1 Introduction

The new MM8000 software release MP4.10-01 is available. These release notes provide the characteristics of the new software, including bug corrections and known issues. We recommend that users carefully read this document before installing and using the software.

This document includes and replaces the release notes published for MP4.10.

1.1 MP4.10-01 at a glance

New in MP4.10-01

MM8000 MP4.10-01 is a bug-correction service release for latest complete setup (MP4.10). It also provides an enhanced support of PC monitor sizes and layouts, including wide-screen format. The list of new resolutions includes: 1920x1200, 1400x1050, 1440x900, and 1680x1050.

→ For a detailed report on bug correction in MP4.10-01, refer to 2.1 on page 6.

Other modifications and information updates concerning MP4.10-01 are marked with a specific note (e.g.: New or Modified in MP4.10-01) like the one on the left side of this sentence.

NICE DVR support

A specific add-on module is also available for MM8000 MP4.10-01 for supporting NICE Digital Video Recorders.

→ For detailed information on NICE support, refer to the appendix on page 34.

Text localisation

MP4.10-01 does not need any further localisation efforts. All MP4.10 texts remain valid. Instead, the NICE add-on package includes some new texts and a corresponding localisation kit.

Field tests

Field test of the software components for supporting Sigmasys fire units as well as Modbus and CDDL/CSDf units has completed successfully.

Instead, NK8000 dial-up and LIST support are still under verification.

MK8000 compatibility

The MM8000 MP4.10-01 can be safely used to upgrade MK8000 MP4.10 sites.



License information:

As for MP4.10, a set of 4.10 PAK codes is required for running MM8000 MP4.10-01.

Very Important: There are an increasing number of Service Keys that are considered no longer valid (lost, faulty or not renewed after BY2005). These Service Keys have been added to a “**Black List**” (published on the PSP support site) and will not work with Composer MP4.10 and later. They must be replaced with a new key.

1.2 MP4.10 at a glance

MM8000 MP4.10 includes the following main features:

- OPC client functions: MM8000 can act as OPC client and connect to OPC servers for communicating to control units via OPC protocol. Integration solutions via OPC for SIMATIC S7 and RCO R-Card M5 are provided.
- Integration of DESIGO PX units (for event management only) via BACnet/IP LAN connections.

- Visibility and command permissions associated to user groups have been reorganized and made consistent between treatment and plant browser.
- Composer MP4.10 provides a structured toolbar and allows configuring both 3.20 and 4.10 projects.
- An import command is available to recreate the DMS7000 tree in Composer automatically.
- Improved support of redundant server configuration with station fault events.
- Transactions (e.g. access control), organization modes, and VB scripts are supported by reactions and sequences.
- Custom filters: if enabled in Composer, customized event filters can be saved and reused. A default filter can also be set.
- Optional reminders have been added for time program and scheduled tasks.
- NK8000 network:
 - Dial-up option between MM8000 and NK822x units both as backup and as only connection (*this function is currently available for field test only*).
 - NK8225 gateways can support network-wide interactions across multiple NK8225 units.
 - Upload from SI410 Sintony is also possible via NK882x.
- Video
 - Support for Motion Detection events from SISTORE CX
 - Support for 'External Viewers' in the Plant Browser for Video and other types of subsystems.
- Support for 2005 release of Microsoft SQL Server software; namely: SQL Server 2005 and SQL Server 2005 Express
→ see also installation notes on page 19.
- Improved installer menu with simpler and clearer commands.
- Metafile import available for CS1115 / FC330A fire control units.
- Various improvements in Graphics, Plant browser (save layout), History application, and Event management.
- Bug corrections as in MP3.20-03.

2 What's new in MP4.10 releases

This section presents the enhancements provided in the new MM8000 software, starting from MP4.10, compared with previous MP3.20-xx.

2.1 MP4.10-01 bug correction

ID	Description	Notes
8154	Problems in CC11 imported texts could occur, e.g. position of brackets.	Also corrected in MM8000 MP4.10 Hotfix #01
8560	NK822x line diagnostic messages could be missing in MM8000.	
8572	The camera selection frame used to disappear from the symbol on the map when the corresponding live video window shows.	Also corrected in MM8000 MP4.10 Hotfix #06
8584	Incorrect data & time sorting in reports of history archive search.	
8601	Various defects corrected in the NK8000 dial-up support.	
8608	If set in closed mode, MM8000 client application could start before server was ready and show incorrect information. A second start command was required.	Also corrected in MM8000 MP3.20-03 Hotfix #31
8609	Status synchronization problems in systems including a connection NK822x-MK7022-CK11. Even when a proper link was established, connection status used to remain "unknown" and no status request executed.	Also corrected in MM8000 MP3.20-03 Hotfix #30
8610	Support for dual monitor in vertical setting.	Also corrected in MM8000 MP3.20-03 Hotfix #42
8612	Error occurred while downloading the Modbus DLL firmware to NK8225 units.	
8616	Problem in handling the NK8000 dial-up: the application software (snap-in) did not show when the NK8000 modem mode was selected in the Plant Browser.	
8618	In very specific cases, the history archive search could occasionally hang up (showing "loading in progress" permanently) until a manual stop.	
8620	Occasional problems in restoring history database.	
8628	On specific sites, errors could occur in accessing the Address Book for remote notification of events.	
8632	Composer used to slow down considerably in handling projects with a large number of sequences.	Also corrected in MM8000 MP3.20-03 Hotfix #35
8634	An erroneous unidentified event could appear in case of a (valid and identifiable) detector fault on building service elements (sector P) of CS11 EP7 units.	Also corrected in MM8000 MP3.15-02 Hotfix #30
8636	Time program reminder could be irregularly repeated more times than what was configured.	
8637	License checker software could occasionally report false license missing errors on servers.	
8641	In rare circumstances, an erroneous message about a "treatment in progress on another client" might show and prevent the treatment procedures from being executed.	
8642 8643	The data import for SI410 Sintony intrusion units failed to handle subsequent imports correctly. Also, change of detector input type of existing was not properly supported.	Also corrected in MM8000 MP3.20-03 Hotfix #34
8645	Journaling application failures could occur on specific configurations.	Also corrected in MM8000 MP3.20-03 Hotfix #33
8647	One defective configuration project including access control could not be opened after restore; the software has been improved to handled this case.	
8649	The trace log option for sequence analysis and debugging did not word properly.	
8650	Summary Bar might not reflect the status of pending events under heavy stress conditions.	Also corrected in MM8000 MP3.20-03 Hotfix #38
8652	After a configuration download, the NK22x unit on the MM8000 screen could permanently remain in a "Alignment in progress" status.	Also corrected in MM8000 MP4.10 Hotfix #03
8665	A very specific sequence of actions used to cause the	Also corrected in

	assisted treatment procedure to block (select the grid view and double click the event icon to enter the advanced treatment).	MM8000 MP4.10 Hotfix #05
8677	In dual screen settings, starting the History browser erroneously resulted in the Event List being minimized.	
8680	The thick border frame (new in MP4.10), which indicates the alarmed point on the screen, was not properly represented on the alarm printouts (still in MP3.20 style).	
8686	Tooltip text of map's background objects was not saved.	Also corrected in MM8000 MP3.20-03 Hotfix #39
8687	Custom filter names were not correctly shown in Hebrew.	
8690	The assignment of operating procedures to a specific Composer sub-tree did not work correctly.	
8711	Scheduled and manual tasks were not correctly shown the grid view.	Also corrected in MM8000 MP4.10 - Hotfix #01
8723	In comparison with the event time and the plant browser's detail view time, the time shown in the point property detail page was shifted 2 hours later.	Also corrected in MM8000 MP3.20-03 Hotfix #37
8729	Execution of alarm printout could fail in case of complex maps including a large number of points and layers.	Also corrected in MM8000 MP3.20-03 Hotfix #38
8730	The mute WAV file, supposed to mute the PC buzzer, was not correct.	
8732	Projects in Danish could be corrupted after a project or language update.	Also corrected in MM8000 MP 4.10 Hotfix #06
8734	In dual screen systems, external application used to be launched always on the first monitor, even though explicitly configured to start on the second screen.	
8735	After a password modification, problems occurred in refreshing the SISTORE page in the configuration tools.	
8756	Composer used to be too slow in handling maps with large JPG background (photos).	
8757	SISTORE CX: if a CCTV camera is associated to an input number 2 or greater, then no PTZ control commands was shown by MM8000.	Also corrected in MM8000 MP3.20-03 Hotfix #38
8761	Problems in navigating geographical trees where a point is present on multiple geographical nodes and maps. Different navigation behaviour occurs depending on the point value (quiet or active).	Also corrected in MM8000 MP3.20-03 Hotfix #41 and MM8000 MP4.10 Hotfix #09
8795	Occasionally, the plant browser application was found to stop working properly on a specific site.	Also corrected in MM8000 MP4.10 Hotfix #09
8804	Commands to video systems used to be erroneously registered as failed commands in the history archive.	
8805	Troubles might occur in MP4.10 when installing a missing client stations. Errors in registering server files (License Server and MM8000LicenseMng) have been corrected that could cause the setup to fail.	
8806	On some PCs equipped with SLQ Server 2005, one of the MM8000 server components (DB Manager) failed to start properly.	
8819	The live video window did not show correctly on the second monitor of dual screen systems.	
8825	Problems in handling the reply to the email notification step with Italian localization. The step fails even if the reply has been sent correctly.	
8845	The ampersand character ("&") was not properly displayed in the event description.	
8858	A subsequent import of data-points (e.g. CS11) associated to a video camera could cause troubles to the Video Network Manager.	
8859	Failures occur in downloading projects including s GW21 and based on a localized MM8000 version (only English default and Italian were OK).	
8872	Troubles with Reaction Server were solved that could occur if multiple scheduled tasks started at the very same time.	
8873	Erroneous modem line faults used to occur upon NK822x start up.	

2.2 MP4.10 features

PC client functions

DMS8000 used to provide an OPC server option (MK8000). OPC client functions are available for connecting to OPC servers and communicating with control units via OPC protocol. Both a "light" and a "full" integration are possible. "Light" integration comes with the standard product, and requires a more careful engineering than typical MM8000 subsystems but no software code development.

Instead, "full" option needs a specific development effort, a dedicated Subsystem Tool for Composer, for delivering max. user benefits.

SIMATIC S7 (in the standard package) and RCO R-Card M5 (available as Add-on) are examples of the "full" OPC integration.

→ For more information about S7 integration, refer to the OPC Connectivity Configuration Guide, doc.no. A6V10065253_a_en.

→ The R-Card M5 is discussed in the corresponding Add-on manual, doc.no. A6V10064742_a_en.

Integration of DESIGO PX units

DESIGO PX units can be connected to MM8000 using a LAN connection based on BACnet/IP. All types of DESIGO PX are supported, but only via LAN. The NS8011 BACnet driver is used (note that LON-based PXs need a LAN adapter).

The EDE files (text file, CSV extension) generated by PX configuration tool can be imported into Composer.

The support of DESIGO PX includes:

- Event notification for alarms and faults
- Event treatment (acknowledge, reset)
- State of binary inputs and outputs only
- Binary output activation

Other types of object will not be visible in MM8000.

Visibility and command permissions associated to user groups

In Composer, the object visibility and command permissions associated to user groups have been better organized in multiple tabs.

Structured toolbar and multiple data-version management in Composer

Composer MP4.10 includes a compact toolbar that groups the control units by discipline.

Also, multiple project versions can be handled (3.20 and 4.10 so far) with no need of upgrading the project. Note that Composer MP4.10 can download 4.10 projects, whereas 3.20 projects can be loaded, modified, saved and then moved to the actual 3.20 installation PC for performing the download.

DMS7000 tree import

In the Composer geographic node, an import command is available to recreate the DMS7000 tree automatically.

Note that CZ10 / CZ12 subsystems must be imported before the tree in order to enable Composer to get the appropriate links to the structure.

In case only part of the control units have been created and imported, the tree import creates the entire structure anyway, and links only the existing and imported CZ10 / CZ12 units and points.

Redundant server configuration

In comparison with 3.20-xx, the physical PCs, identified as "license stations" and can provide a station fault event when one of the physical machines is down.

Transactions and VB scripts in reactions and sequences

Transactions can be included in reaction triggers and in sequence programs. When occurring (instantaneously), the transaction is evaluated during a programmable period of time (Transaction time) that allows other conditions (e.g. alarm states or other transactions) to happen and be tested along with the transaction. Organization modes can be included in triggers + effects of reactions and in sequence programs.

VBScript are supported in reaction and sequences. A simple text editor is integrated. Also, a VB method has been added for reading MM8000 information.

Customised event filters

If enabled in Composer, customised event filters can be defined in the MM8000 event treatment. Filters can be saved and then reused with simple commands. A default custom filter can also be set.

Reminders for time program and scheduled tasks

A window message (on all clients)/e-mail/SMS can be generated (possibly more than once) before a time program executes.

Dial-up connectivity between MM8000 and NK822x units

Dial-up works with CEI protocol (not compatible with network-wide interactions). Modem objects are inserted in the Composer tree. Modem parameters include local phone no., AT commands codes, supervision frequency, tone (default) or pulse mode. Modems are then linked to NS8210 modem folder and to one of the NK8000 serial lines. COM port, baud rate, and other parameters are set in the link nodes. In the link node of NK8000 modem, the calling phone numbers are entered: max. 5 numbers, used in the sequence until the connection is established.



Currently, the dial-up connectivity is released for field test only. Please contact support to be informed about the tests in progress.

NK8225 network-wide interactions

In the interaction folder of NK8225 gateways you can link –and then use in the interaction program– objects belonging to the supported subsystems (see list below) connected to both the same gateway (local interactions) and other NK8225 gateways (network-wide interactions) in the same project.

The following subsystems are supported for both local and network -wide interactions:

- CS11 AlgoRex EP5 and EP7
- FC700
- CS6 Quarto
- SI410/420 Sintony
- SIGMASYS
- DF8000/CF9000 I/O
- STT20
- STT2410
- Philips/Burle video switcher
- Local NK8000 I/O (DF8000 modules)
- MK7022 Cerloop interface

Note that network-wide interactions are only possible between subsystems connected to NK8225 (NK8222 and NK8223 can only support local interactions).

SI410/420 Sintony upload via NK882x

Configuration upload from SI410/420 Sintony used to be available only via a direct serial link to the control unit. Starting from MP4.10, this is also possible through the NK882x connection line.

Motion Detection (MD) events from SISTORE CX

MD should be consistently configured in CX Config and MM8000 Composer (motion and sabotage detection in the CX camera nodes).

Cameras supporting MD provides MD alarm and tamper events as well as inclusion/exclusion of alarm and sabotage. Note that alarms are generated on the camera point (no longer on video-in points).

External Viewers support in Plant Browser (PB)

This feature allows integrating a foreign application as PB viewer with a simple configuration in Composer. It can support both an HTML active component and a Windows application (EXE with parameters).

Note that this is NOT a subsystem integration, as it just includes data viewing capability in PB (video, images, etc.). No alarm/fault events and no configuration support (e.g., association camera to points) can be provided.

Miscellaneous improvements

- CS1115 / FC330A fire control units can be configured via import of the metafile
- Graphics: thicker frame of selected points in maps; centred zooming
- Video configuration: simplified setting of cameras' coverage area
- Plant browser: the screen layout can be saved for easy personal settings
- History application: in the reports, MP4.10 includes a column that indicates the event "source location", which can be different from the "event location" in case of geographical tree
- Event management: event filters are available also in case of automatic event treatment. Note that limitations to the filter may apply in order to follow the automatic treatment policy: e.g. the first event in the list may not be filtered out.

2.3 Summary of connectivity options

Network	Notes	Further info. in DMS8000 documentation
Direct serial links: <ul style="list-style-type: none"> - CS11 AlgoRex© (via CK1142) - FC700A (via FG700A) - SI410 Sintony™ - CC1115 / FC330A 		Network, Fire & Intrusion Connectivity Guide: A6V10062425_a_en
LAN links: <ul style="list-style-type: none"> - Siemens CCTV: SISTORE, TELSCAN, IP Cameras - Geutebrück MultiScope - SiPass Access control - DESIGO PX 	- DESIGO PX via BACnet/IP	Network, Fire & Intrusion Connectivity Guide: A6V10062425_a_en
- Cerloop	-	Network, Fire & Intrusion Connectivity Guide: A6V10062425_a_en
<ul style="list-style-type: none"> - CDI-Net - NK8000 via serial link 	-	Network, Fire & Intrusion Connectivity Guide: A6V10062425_a_en
NK8000 LAN: <ul style="list-style-type: none"> - NK8222 - NK8223 - NK8225 	<ul style="list-style-type: none"> - Dial-up connectivity - Network-wide interactions - NK8225 BACnet gateway ⁽¹⁾ - NK8000 MP4.10 firmware 	Network, Fire & Intrusion Connectivity Guide: A6V10062425_a_en NK8000 Installation, Configuration & Commissioning: A6V10062437_a_en
OPC links: <ul style="list-style-type: none"> - SIMATIC S7 - RCO R-Card M5 	-	

Tab.1 Network options

Peripheral equipment	Notes	Further info. in DMS8000 documentation
- MT8001	Not available for MP4.10 networks. Use NK8000 MP3.15.	MT8001 Installation, Configuration & Commissioning: 006647_e_en
SMS service over GMS: <ul style="list-style-type: none"> - Siemens Modem M20 - Siemens Modem MC35 	-	MM8000 Installation, Configuration & Commissioning: A6V10062413_a_en
E-mail/SMS service over e-mail: <ul style="list-style-type: none"> - POP3 service provider 	-	MM8000 Installation, Configuration & Commissioning: A6V10062413_a_en
Paging system: <ul style="list-style-type: none"> - ESPA 4.4.4 system 	ASCOM, Novalink, & Telepage systems have been tested	

Tab.2 Peripheral equipment and services

¹⁾ Tests with DESIGO INSIGHT are still in progress.
The integrated DESIGO + MM8000 solution via NK8225 is not available yet.

What's new in MP4.10 releases

Control units	Notes about latest version supported	Connectivity and configuration notes	Further info. in DMS8000 documentation
CS11 AlgoRex® EP5 and EP7 FC700A	EP7F Z2.1 (V7.8x)	Direct link, Cerloop, and NK8000	Network, Fire & Intrusion Connectivity Guide: A6V10062425_a_en
CS1115 Phase 4 FC330A Phase 4	CISxx8.86	Direct link	Network, Fire & Intrusion Connectivity Guide: A6V10062425_a_en
SIGMASYS D100	SIGMASYS V40-2 D100 V3.5	NK8000	Network, Fire & Intrusion Connectivity Guide: A6V10062425_a_en
STT11		STT2410 and STT20 via NK822x	Network, Fire & Intrusion Connectivity Guide: A6V10062425_a_en
STT2410 / STT20		via NK8000	Network, Fire & Intrusion Connectivity Guide: A6V10062425_a_en
CZ10 / CC60 / CZ12 CS4 / CS440		Cerloop and NK8000	Network, Fire & Intrusion Connectivity Guide: A6V10062425_a_en
CS6 Quarto™	MP3 MP3+	via NK8000	Network, Fire & Intrusion Connectivity Guide: A6V10062425_a_en
SI410/420 Sintony™	Firmware F8-05 F09 not compatible	Direct link and NK8000	Network, Fire & Intrusion Connectivity Guide: A6V10062425_a_en
DMS7000 units: MM/MF-7033 etc.		Cerloop and NK8000	Network, Fire & Intrusion Connectivity Guide: A6V10062425_a_en
SIPASS™	→ See 2.3.1 below	LAN	AC Connectivity Guide: A6V10062451_a_en
SIMATRIX 164; 648; SYS, SIMATRIX NEO	All versions supporting CDDL-CDSF protocol (also indicated as "LMS protocol")	via NK8000	Video Connectivity Guide: A6V10062457_a_en
SISTORE AX / MX / MX Pro / CX / SX DVR	→ See 2.3.2 below	LAN	Video Connectivity Guide: A6V10062457_a_en
TELSCAN		LAN	Video Connectivity Guide: A6V10062457_a_en
Stand-alone IP cameras (TELSCAN protocol)		LAN	Video Connectivity Guide: A6V10062457_a_en
DF8000/CF9000 I/O (DF8003 or CF9003 + DF8020/8040/8045/8046)		via NK8000	Network, Fire & Intrusion Connectivity Guide: A6V10062425_a_en DF8000 ICC: A6V10081388_a_en
Geutebrück CCTV MultiScope™ II Plus and III		LAN - Manual installation of Composer plug-in	Geutebrück CCTV Add-on manual: A6V10067796_a_en
Philips/Burle CCTV (LTC 8x00)		via NK8000	Video Connectivity Guide: A6V10062457_a_en
SIMATIC S7		LAN / OPC	OPC Connectivity Guide: A6V10065253_a_en
DLCS door control system (via WinCC OPC server)		LAN - Manual installation of Composer plug-in	DLCS Add-on manual: A6V10067792_a_en
Autronica BSxxx		via NK8000 - Add-on package is required	Autronica BS Add-on manual 008750_b_en
LIST SCU 2000 (field test only)		via NK8000 - Add-on package is required	LIST Add-on manual 009248_a_en
MAXSYS PC6010		via NK8000 - Add-on package is required	MAXSYS Add-on manual 008751_b_en
CP100		via NK8000 - Add-on package is required	CP100 Add-on manual 009848_a_en
Modbus-based subsystems		via NK8000 - Add-on package is required	Modbus Add-on manual A6V10067800_a_en
CDDL/CDSF-based subsystems		via NK8000 - Add-on package is required	CDDL/CDSF Add-on manual A6V10067787_a_en
NICE DVR		LAN - Add-on package is required	→ See Appendix on page.34

Tab.3 Subsystem equipment and services

2.3.1 SiPass

The following table shows the compatibility between MM8000 and SiPass versions:

Compatibility matrix:	MM8000	SiPass 2.2	SiPass 2.3 Build 18	SiPass 2.3 Build 21	SiPass 2.35 Build 31	SiPass 2.35 Build 38	SiPass 2.35 Build 41
	MP3.15	Yes	No	No	No	No	No
	MP3.15-01	No	Yes	No	No	No	No
	MP3.15-02	No	No	Contact support (*)	No	No	No
	MP3.20	No	No	Yes	No	No	No
	MP3.20-01/-02	No	No	No	Yes	Yes	Not tested
	MP3.20-03/-04	No	No	No	Yes	Yes	Yes
	MP4.10	No	No	No	Yes	Yes	Not tested
	MP4.10-01	No	No	No	Yes	Yes	Yes

The following table shows the characteristics of the integrated solutions:

#	Description	MM 3.15 SiPass 2.2	3.15-xx SiPass 2.3	3.20 SiPass 2.3	3.20-xx SiPass 2.35	4.10-xx SiPass 2.35
1	MM8000 replaces the SiPass related event management	Yes	Yes	Yes	Yes	Yes
2	AC users & permissions in SiPass software launched by MM8000	Yes	Yes	Yes	Yes	Yes
3	Door statuses available in MM8000 text pages and graphic maps: Door Alarm (unique event for Door Forced or Held) Door Forced Door Held Door Locked / Unlocked Output Active / Inactive Input/Output Tamper Device Faults (except for Readers) Duress alarm Pass-back input Tamper/Status (REX button) Reader Fault and Tamper	Yes No No Yes Yes Yes Yes No No No	No Yes Yes Yes Yes Yes Yes Yes Yes Yes	No Yes Yes Yes Yes Yes Yes Yes Yes Yes	No Yes Yes Yes Yes Yes Yes Yes Yes Yes	No Yes Yes Yes Yes Yes Yes Yes Yes Yes
4	Control commands available in MM8000 text pages and graphics: Door Lock / Unlock (propagated on the geographical tree) Allow Access Output Activate / Deactivate	Yes Yes Yes	Yes Yes Yes	Yes Yes Yes	Yes Yes Yes	Yes Yes Yes
5	Support for ACC controllers..... Support for CC30 CerPass controllers.....	Yes No	Yes Contact support (*)	Yes Yes	Yes Yes	Yes Yes
6	Store events & security-relevant AC transactions in MM8000 history database. The transaction list includes: Access Denied (Zone Violation and Hardware Anti-pass back) Access Granted (not tracked by default)	Yes Yes	Yes Yes	Yes Yes	Yes Yes	Yes Yes
7	Limit in number of devices configured in FLN lines	32	253	253	253	253
8	SiPass transactions can be used to trigger MM8000 reactions	No	No	No	No	Yes
9	Support for BLN and IS bus objects	n/a	No	Yes	Yes	Yes
10	Support for FLN3a and FLN3b bus objects	n/a	No	Yes	Yes	Yes
11	Multiple SiPass systems connected to the same MM8000	No	No	No	Yes	Yes

Note:

(*) Feasibility should be technically verified by customer support

Tab.4 SiPass

→ See Access Control Connectivity Guide no.A6V10062451_a_en.

2.3.2 Video

All models of the SISTORE Digital Video Recorders are supported in various software versions: please refer to the compatibility matrix provided below and to the corresponding [known issues described on page 25](#).

Video device model	Video device version / type	MM8000 Version
SISTORE AX	V2.4.0	MP3.15, 3.15-01/-02, 3.20, 3.20-01/-02/-03/-04, 4.10, 4.10-01
	V2.5.0	MP3.15, 3.15-01/-02, 3.20, 3.20-01/-02/-03/-04, 4.10, 4.10-01
	V2.6.0	MP3.15, 3.15-01/-02, 3.20, 3.20-01/-02/-03/-04, 4.10, 4.10-01
	V2.6.1	<i>Not tested yet; see latest news on PSP → MM8000 info platform</i>
	V3.1	MP3.20-01/-02/-03/-04, 4.10, 4.10-01
AX lite	V1.0	<i>Currently not supported</i>
SISTORE MX (including NVR)	V2.55, V2.57, V2.58 ⁽¹⁾ , V2.60 ⁽²⁾	MP3.15-02, 3.20, 3.20-01/-02/-03/-04, 4.10, 4.10-01
SISTORE MX Pro	V2.45	MP3.10, 3.15, 3.15-01/-02, 3.20, 3.20-01/-02/-03/-04, 4.10, 4.10-01
	V2.50	MP3.15, 3.15-01/-02, 3.20, 3.20-01/-02/-03/-04, 4.10, 4.10-01
SISTORE CX/SX	V3.00, V3.01	MP3.20
	V3.1	MP3.20-01/-02/-03/-04, 4.10, 4.10-01
	V3.2	MP4.10, 4.10-01
	V3.4 ⁽³⁾	MP4.10-01
TELSCAN	V2.00	<i>Not supported</i>
	V2.03A	MP3.15, 3.15-01/-02, 3.20, 3.20-01/-02/-03/-04, 4.10, 4.10-01
	V2.10	MP3.15-01/-02, 3.20, 3.20-01/-02/-03/-04, 4.10, 4.10-01
Siemens IP cameras:		
→ direct on LAN, mapped as single-line TELSCAN	Fixed IP cameras CCIS 1337-LP, CFVA-IP, CVVA-IP	MP3.15-01/-02, 3.20, 3.20-01/-02/-03/-04, 4.10, 4.10-01
→ via SISTORE MX	Any IP camera compatible with SISTORE	MP3.20, 3.20-01/-02/-03/-04, 4.10, 4.10-01
Geutebrück MSC	V5.0 (3.613)	MP3.20, 3.20-01/-02/-03/-04, 4.10, 4.10-01
NICE	See App.A on page 34	MP4.10-01 + NICE Add-on

Tab.5 Video units

→ See Video Connectivity Guide no. A6V10062457_a_en

² When using SISTORE MX V2.58 and V2.60, the Remote Viewer software version should always correspond with the DVR software version (Remote Viewer V2.58 with SISTORE MX V2.58 and Remote Viewer V2.60 with SISTORE MX V2.60).

³ Faults related to loss of camera signals are not supported by MM8000 with SISTORE CS/SX V3.4.

3 Installation and configuration procedures

3.1 Software installation

MM8000 MP4.10 is distributed with a complete and assisted setup procedure. For detailed information about the installation procedure, refer to the MM8000 ICC manual (document no. A6V10062413_a_en).

3.1.1 New systems: installing MP4.10 and then 4.10-01

Assuming a stand-alone MM8000 station, the MP4.10 installation procedure includes the following steps:

1. Check system requirements. Note the typical required software:
 - If required, the SiPass application software should be installed before MM8000, on the same PC or on another machine in the network. If a previous SiPass version is installed, upgrading to latest software is mandatory before installing MM8000. In this case, we recommend uninstalling SiPass and then installing it again.
 - A local or networked SQL server or SQL Data Engine (MSDE 2000 or SLQ Server Express 2005). Note that SiPass includes the SQL Data Engine software (MSDE 2000), which can be perfectly used by MM8000 as well. Also, be informed that, at the moment, the use of an external SQL server is not supported by SiPass, which requires a local server of its own.
 - Microsoft software **.NET Framework 1.1 and 2.0** as well as **SQLXML 3.0 SP3** are required. All applications are available on the distribution CD and can be installed and used free of any license charge.
 - If required, also install the video application software, according to the specific CCTV device. For detailed instructions, please refer to the related documentation.
 - Other software may be required depending on the specific configuration including NK8000 networks and Alarm Printout services.
→ Please refer to the MM8000 ICC manual (doc.no. A6V10062413_a_en).
2. Log on as Administrator.
3. If an old release of MM8000 is installed (e.g. MP3.10/3.15/3.20). then you need to uninstall it and reboot the PC.
4. If SiPass will be used and an existing SQL engine is present, uninstall it. At this point, if you need to install SiPass, you also have to remove the SQL server Data Engine previously installed by MM8000, and then delete the corresponding folder, typically C:\Program Files\Microsoft SQL Server. Note that failing to remove the previous SQL server will result in the SiPass installation not executing properly.
5. Install MM8000 software, which can be:
 - Stand-alone (or Server)
 - Client
 - FEP
 - Configuration-only (Composer)
 - License station (only for redundant server systems based on Marathon Ever-Run)

During the software setup, you have to select the security mode (standard or restricted), the server tasks start-up mode (automatic or manual), and other installation options.

→ If you are not familiar with the setup procedure, please read section 4 of the MM8000 ICC manual (doc.no. A6V10062413_a_en) before installing the software.
6. Reboot the PC.
7. Install the MP4.10-01:

Installation and configuration procedures

- Make sure that no MM8000 client applications (including Composer and Simulation tools) are active.
- Copy the MP4.10-01 setup on a local drive, e.g. in the folder:
C:\MM8000_MP4.10-01\...
- Launch the command: Fix_MM8000 MP4.10.01.exe that upgrades all the software components.

8. Install the hardware key and enter the license code using the PAK Manager tool. Note that SiPass also requires a license option (Management Station Integration).

Notes:

- **Software License:** Composer and MM8000 licenses must be updated to MP4.10.
- **Localisation:** by default, the DMS8000 software is installed in English.
The installation procedure can install texts in another language as long as the required language file (LANG_xxx.ZIP) is included in the setup folder along with the other files (not provided by default).
Otherwise, the language may be modified later by means of the 'Language Installation' utility.
→ See MM8000 Localisation Engineering Guide, doc.no. A6V10062459.
- Be aware that you first need to **download** the Composer configuration before being able to start the MM8000 application (MM8000 client).
→ See MM8000 ICC manual, doc.no.A6V10062413_a_en.
- **If the SiPass server does not run on the same PC as MM8000**, then additional installation steps are required on the networked PC where SiPass is installed:
 - 1) In the Windows user list, the SiPass PC should include the MM8000 *Internal User*, by default 'DMS8000-Proc'. Use the same username and password as on the MM8000 PC.
→ Refer to MM8000 ICC Manual (doc.no.A6V10062413_a_en).
 - 2) In the SiPass Server Properties, modify the Logon option in order to use the MM8000 *Internal User* as Logon account (see picture below).



4 Updating from older releases

4.1 Software License

All previous Composer and MM8000 licenses must be updated to MP4.10. Also, note that Service Keys whose contract expired in 2006 or earlier will not work with MP4.10 software. Those keys can no longer be used and need to be replaced by new service keys to be obtained opening new Composer contracts through standard sales channels.

4.2 Localisation

Referring to the localised versions, be informed that the language file (ZIP) must be updated using the MP4.10 localisation toolkit, which is new in comparison with all previous versions.

4.3 Updating from MP2.xx

The configuration database update from MP2 releases - namely MP2.10, MP2.20, MP2.21, and MP2.30 - is possible using MM8000 MP2.31 and MP3.15 as intermediate conversion steps; see documents MM8000 MP2.31 Release Notes (008091_a_en) and MM8000 MP3.15 Release Notes (008901_a_en).

4.4 Updating from MP3.xx

Updating from MP3 releases (MP3.10-xx, MP3.15-xx, and MP3.20-xx) is possible as described in this section. You perform the following steps:

1. Make sure you have backup copies of your MM8000 project; namely:
 - Composer project backup
 - Runtime scheduler task definitions
2. Uninstall previous version and reboot.
3. If still present, delete the 'C:\MM8000' folder.
4. Install the new MM8000 software as described in section 3.1.
Do not forget to check the related hardware and software requirements.
5. Start Composer and restore your project
6. Open the project (note that the opening process may take quite a few minutes).
7. In the MM8000 structure tree, select:
 - Supervision System Settings → MM8000 System → Logical Configuration → User Data
8. On the Node tab, press the button labelled "Project Update".
The update procedure will start and may present a message window that informs you about forced modifications in the projects. A detailed log is provided in <installation folder>\Logs\NEOUPDATE.LOG.
9. The update procedure will take some minutes, depending on project size.
Please wait for the procedure to complete.
10. *[Database 3.15-xx and earlier only, not required for 3.20]*
In the MM8000 structure tree, select:
 - Supervision System Settings → MM8000 System → Logical Configuration → User Data → Graphic Maps

On the Node tab, press the button labelled "Map Update" and wait for the graphic map update procedure to complete.

11. If SiPass is used, align the access control configuration.

Different procedures are required depending on the database versions:

- [Database 3.15-01 and earlier only]
the SiPass node in the Composer tree must be deleted and then created again (note that the deletion will force you to reconfigure the access control points in maps, reactions, sequences, etc.).
- [Database 3.15-02 and later]
the alignment of the access control configuration is required.

After restoring a previous SiPass configuration, it is necessary to add a new user to the list of authorised operators for SiPass. The user data must be:

- Username: SiPassUser
- Password: SiPassPassword



It is essential to execute a SiPass database alignment before downloading a project that includes a SiPass access control system.

You can either connect to the SiPass application and then align the database (on-line mode) or import the XML database created with MP4.10 export tool.

The alignment is also necessary (typically in off-line mode) in case the SiPass unit is simulated for test/demo purposes.

→ Refer to the Access Control Connectivity Guide (A6V10062451_a_en).

12. [Database 3.1x and 3.20 (if not already done)]

Update Journaling Services. Proceed as follows:

- Select:
Supervision System Settings → MM8000 System → Logical Configuration → System Data
- Check the “Journaling Service” node: if a journaling printer is configured, note down what template is used.
- Then, delete the “Journaling Service” node and then inserted it again from the menu. That will install the latest Composer component for this function.
- If a journaling printer is used in your configuration, link the printer to the journaling to the template you took note about before deleting.

13. Download the new project.

14. If used, download the NK822x units with the latest firmware and configuration.

→ Refer to the NK8000 chapter in the DMS8000 Network Connectivity Guide (A6V10062425_a_en).

15. Close Composer.

16. Run MM8000 and restore the runtime scheduler task definitions.

5 Known issues in MP4.10

This is a list of known limitations, problems, bugs and recommended practises at the time this software was released. Compared with previous Release Notes, new and updated points are marked by a side label for easier identification.

5.1 Installation

New in MP4.10-01

(This limitation is NOT new in this software version)

MS Windows Vista

Vista is not supported, yet (planned for MP4.15 in 2008).

MS Windows 64-bit edition

Windows 2003 64-bit edition is not supported.

MSDE or SQL server

MM8000 requires SQL server 2000 or 2005. The free-of charge database “engine” package from Microsoft is sufficient: you can use both MSDE 2000 (MS SQL server Desktop Engine) and SQL Server Express 2005.

MS SQL Server If SiPass is installed and integrated with MM8000, then the MSDE installed by SiPass can also be used for MM8000.

Note: The SiPass setup does not accept the MSDE copy installed by MM8000 as valid.

If you have installed MM8000 before SiPass, then proceed as follows:

- Uninstall MM8000 and reboot
- Uninstall MSDE 2000 and reboot
- Delete the MSDE folder, typically C:\Program Files\Microsoft SQL Server
- Install SiPass
- Re-install MM8000

SQL security

MSDE 2000 has a security weakness (the empty ‘sa’ password) that can be fixed by setting your SQL password with a special command available in:

<installation folder>\Utilities\Bat\SetSQLServerPassword.bat

Run this batch file adding your password as parameter (copy and paste the command line into the ‘Start → Run’ line, then enter the password and click ‘OK’).

Note: You can also edit this file and replace the “%1” field with your own password. Then save the file with another name (the original is read-only) and run it. Keep the new file in a safe place in case you need to refer to the new SQL password.

If MSDE has been installed along with SiPass, please follow the SiPass documentation concerning this issue.

Troubles with the hardware key

After installation, if the PAK manager cannot recognise the HW key, the sentinel drivers may need to be installed manually. In this case, launch the set-up located in:

<installation folder>\PAK Manager\Sentinel Drivers\SSD5411-32bit

and follow the instructions; when prompted, select the default installation.

Cannot change domain/PC name

MM8000 does not support a domain/PC name change on the Client or Server after the installation. The solution is to uninstall MM8000, rename the PC, reboot, and then install the software again.

→ See also MM8000 ICC manual (A6V10062413_a_en).

Printer spooler

MM8000 requires the printer spooler to be enabled for the configured printers.

Clear History DB

Rare cases of difficulties in the history functions have been reported after installation. In such cases, the FS-DMS support may recommend the use of the program:

<installation folder>\Utilities\ToolsUtilities\EngineeringTools.exe

This can clear (and optionally also resize) the database and solve the problem.

Video applications

Video applications require specific software (viewers and other utilities) to be installed before MM8000.

→ Please check requirements in MM8000 ICC manual (A6V10062413_a_en)

Windows Server 2003 may not be supported by all SISTORE video applications; please check the latest SISTORE documentation

Alarm printout

The alarm printout application, when used on Windows 2000, requires an additional Microsoft software to be installed (Internet Explorer 6). Please check software requirements in MM8000 ICC manual (A6V10062413_a_en).

Windows XP

MM8000 can run on Windows XP SP2. However, depending on the firewall options, the use of this operating system may require special settings.

→ Please check software requirements in MM8000 ICC manual (A6V10062413_a_en).

Windows NT 4.0 domain server

As documented in the ICC manual, MM8000 stations can work in a Windows network controlled by a domain server based on Windows 2000 or 2003 server. In case the server runs on NT 4.0 operating system, MM8000 can still be used, but only in restricted-security mode, manually managing the user list in the NT 4.0 domain server. In other words, MM8000 must first be installed in restricted mode (on Windows 2000 or XP networked stations) and then MM8000 operators must be defined on the domain server as Windows users before being created and downloaded from Composer.

→ For more details about security modes, please refer to the ICC manual (A6V10062413_a_en), section 4.2.

Problems with Windows patch KB902400

In some restricted-security environments (typically within a domain), if the DCOM access has been manually limited to the Administrator group, this Windows patch may affect the DCOM settings and remove some Administrators' permissions. This results in the MM8000 software being prevented from running properly.

In case of major problems in running the MM8000 after the KB902400 patch, make sure that, in the DCOM Security setting, the Administrators group is actually enabled for all the "Access permissions".

Note that this problem does not affect the MM8000 standard security setting.

Pak Manager and 3rd-party PAK codes

Pak Manager shows the 3rd Party PAK codes only if the related Add-on is installed. Instead, if the additional software is not present, the related PAK does not appear in the list. Note also that, if you install the Add-on package after the PAK configuration, you need to re-insert the PAK's in the PAK Manager to get the correct license. Additionally, this implies to restart the MM8000 servers.

NK8225 and DESIGO INSIGHT

Tests of BACnet communication between NK8225 and DESIGO INSIGHT are still in progress. The integrated DESIGO INSIGHT + MM8000 solution via NK8225 is not available yet.

5.2 Configuration

Download failures

Repetitive download attempts may cause failures. In this case, close Composer after each download and then reopen it. Also try the 'Empty_DB' procedure (see <installation folder>\Utilities\ToolsUtilities\EngineeringTools.exe).

Opening previous release projects

- MM8000 MP3.15 projects: when opening a large (e.g.: 13,000 or more Composer nodes) MP3.15 project in Composer for the first time, please allow up to 50 minutes.
- MK8000 MP3.18 projects: MK8000 3.18 projects must be reconfigured in Composer; restore is not supported.

Graphic tool

- Best practises for bit-map files: convert BMP files to JPG (photos) or to GIF (schemas). This will improve the performance considerably.
- Name of graphic maps: in Composer, names of graphic maps should never be longer than 50 characters.
- Problem filtering AutoCad layers in metric maps: if used for metric maps, the AutoCad importing wizard erroneously notifies a problem when the "CAD selection → Layer" window is selected. The following message is displayed: "Error loading file <filename>" and the AutoCAD file is apparently not imported. Actually, if you then close and re-open the map, the AutoCAD image is shown properly, as it is present in the map in spite of the error message.
- Adding CAD fonts: additional CAD fonts can be manually added in the folder <installation folder>\Resources\CADfonts (e.g. C:\MM8000\ Resources\CADfonts). If not already existing, the 'CADfonts' subfolder must be created.
- CAD-based metric maps do not handle correctly the position of additional JPG or BMP images that are added to the map background. When created, metric maps may or may not be set as CAD-based, depending whether the scaling factor and the size are entered manually or taken from the imported AutoCAD drawing.
In case images are used, it is recommended not to use the CAD-based option and set scaling factor and size manually.
Note that, after the creation wizard, it is not possible to change the CAD-based option, and a modification in this respect implies the creation of a new map.

New in MP4.10-01

Modified in MP4.10-01

DMS7000 metafile for CZ10 and CZ12

CZ10 and CZ12 customer texts (DMS7000 databases) can be imported only once. No subsequent import of CZ10 and CZ12 is possible.

Cannot use USB service key and old parallel keys at the same time

In certain cases, two license keys can be used on the same machine to enable MM8000 and tools separately. Be aware that the old generation of keys (larger in size, see the following picture) will not work properly when the USB key is also installed.

In such cases, you need to remove the USB dongle (i.e. the service key used for enabling Composer) when you need the MM8000 to recognise the parallel key.

CC11 AlgoRex EP7

- The following structures are imported in the logical tree but not in the physical tree:
 - 1551 - Digital output;

- 1552 - Digital output supervised;
 - 1560 - Internal horn;
 - 1561, 1564, 1565 - External horn;
 - 1562 attribute = RTFIRE - "Alarm" remote transmission channel;
 - 1562 attribute = RTFAULT - "Fault" remote transmission channel;
 - 1562 attribute = RTOTHER - "Other" remote transmission channel.
- **"Move" function in AlgoRex tool: the AlgoWorks "move" function**, which allows CC11 objects to be moved in the tree structure, **is not fully supported in MM8000 tools** (ref. defect #5521). In fact, the import procedure can treat this case correctly when the moved objects maintain the same parent node (e.g. Zone is moved from the last position to the first position within the same Section).
- Instead, moving objects and changing the parent node (e.g. Zone is moved from Section 1 to Section 2) is not supported. The import operates by deleting and recreating the object in the MM8000 structure. Note that this results in the previous links of the moved object being lost, e.g. a fire zone will disappear from its map or its reaction. You then have to reconfigure the object in maps and reactions, etc.

Lock/Unlock MM8000 stations

Before locking the MM8000 station in closed mode, please read carefully the 'Activating the MM8000 closed mode' chapter of the ICC manual (doc. no. A6V10064742_a_en).

STT20

STT20 metafile needs to be re-imported after restoring an MP 3.15 projects, else the download may fail.

Composer

- Be aware that the Composer Backup file (zip-compressed BAK file) does not include HTML pages, Address Book, Composer templates.
- Multiple clients and remote client: two Composer client stations can be used simultaneously for configuration purposes on the same project, using the Composer client software and connecting (even from a remotely networked PC) to the Composer server.

As for a single client, Composer requires a license + key or a Service key installed on the server machine. Note that the service key, when installed on the client PC, cannot enable the Composer client function.

→ See Composer Technical manual no. '003183_l_en'.

Note that, given the lack of specific messaging services between multiple stations, Composer users simultaneously accessing the same project should be able to directly inform each other about activities. In fact, time-consuming tasks like importing or downloading can temporarily suspend the server availability and significantly delay the system response. In addition, simultaneous editing of the same graphic map is not allowed (modification collision is not checked and may result in loss of data).



5.3 Functionality

FEP stations require server when starting up

Distributed configurations including FEP stations: When you start up a FEP station, you must ensure that the MM8000 server is already up and running.

Low virtual memory events

Depending on the specific configuration and on the PC hardware characteristics, MM8000 software may use up the memory resources in Windows and cause the

“Low virtual memory” error message to display. Should that occur, you can **adjust the virtual memory size** (i.e. the size of the *paging* file where Windows swaps the active memory areas on disk). Using the Administrator login, proceed as follows:

- Start → Settings → Control Panel → System → Advanced tab → Performance Options → Virtual memory “change” button.
- At this point, in the disk drive list that appears, select the Windows 2000 System disk drive (typically C:) and set the size values as follows:

	Client / FEP	Stand-alone / Server
Initial size	1024 MB	2048 MB and more ⁽⁴⁾
Maximum size	4096 MB	4096 MB

Screen savers

Please abide by the following guidelines if you wish to use a Screen saver while running MM8000:

- Use only standard Windows Screen savers;
- Do not configure password protection for Screen savers.

Standard Windows Screen savers allow for the Event icon area and the Summary bar to be present while the Screen saver occupies the Work area. Failure to comply with the guidelines listed above may result in problems with the MM8000 system.

Acrobat writer/distiller

Installing MM8000 typically affects the behaviour of the Acrobat Writer/Distiller, which will not work properly any more, even uninstalling MM8000.

M35 GSM modem and character set in SMS messages

In SMS notification messages, the M35 modem (ref. M35 manual “MC35_ATC_01_V05.00”) is configured to support the GSM 03.38 (7-bit) alphabet set, which includes a minimum set of characters.

In most cases, message texts in Western languages are adapted to the GSM set, whereas other languages (e.g. Russian, Chinese, Hebrew, etc.) are not supported (note that texts including invalid characters are discarded by the modem and the related message is lost).

In general, we recommend using plain ASCII characters in SMS messages. However, the customisation of some special characters is possible in the localisation procedure. Please refer to MM8000 Localisation Engineering Guide, document no. A6V10062459_a_en.

Event dispatching

In Windows XP, the dispatching steps of operating procedures do not work properly if the Windows Address Book or Outlook Express is open while MM8000 operates. Ensure that these applications are closed.

Removing history full events

In case the SQL history archive is automatically backed up, the MM8000 events related to archive full condition are no longer necessary to notify the operator. In such cases, we recommend setting ‘out of scan’ the History node of the Station in the MM8000 Physical Structure.

SiPass

- **Reader name, FLN name and structure**

This information cannot be acquired from SiPass; this prevents MM8000 from representing the entire physical structure of the devices.

⁴ Initial size may be extended up to 3000 MB in case low memory events still occur.

– **Object states and events**

The following information is not transmitted to MM8000:

- Door Block and Door Open (frame contact)
- ACC Tamper, Power Fault, and Battery Operation
- Area and Elevator objects are not visible at all
- Soft Anti-pass back

– **Access Denied** events are not transmitted to MM8000 in case of:

- Card not yet active
- Time schedule violation
- Expired card
- Void card
- Wrong PIN
- Access with Daily code

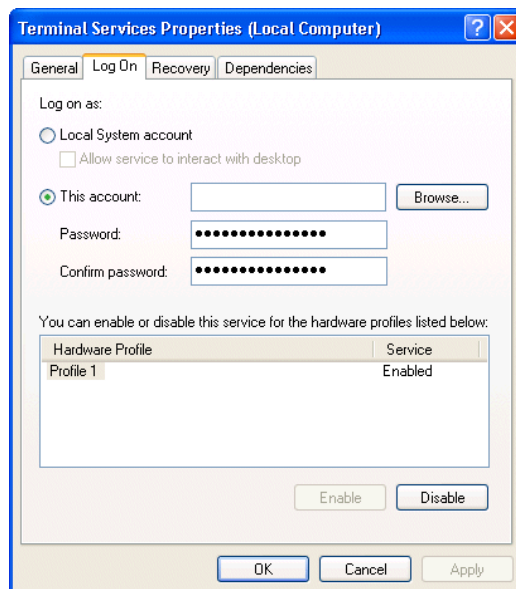
– The use of SiPass **Alarm Classes** with MM8000 is affected by some limitations. Please refer to the SiPass chapter in the DMS8000 Access Control Connectivity Guide (doc.no. A6V10062451_a_en).

– The SiPass **functions which are also available in MM8000** - e.g. event notification (message forwarding in SiPass), reactions and sequences (event tasks in SiPass) - should be clearly assigned to either of the two systems, according to specific requirements, thus preventing any functional overlap.

Remote SiPass server (Windows XP only)

If the SiPass server is installed on a remote PC, the “Log On” properties must be changed on the remote PC so that the SiPass server can communicate with MM8000. Perform the following steps:

1. Log on to the PC with the SiPass server.
2. Right-click on ‘My Computer’ and select ‘System Tools → Local User and Groups → Users’.
3. Add the new user ‘DMS8000_PROC’ and assign administrator rights (for detailed instructions, please refer to standard Windows documentation).
4. Right-click on ‘My Computer’ and select ‘Services and Applications → Services’.
5. Double-click on the SiPass service and select the ‘Log On’ tab.



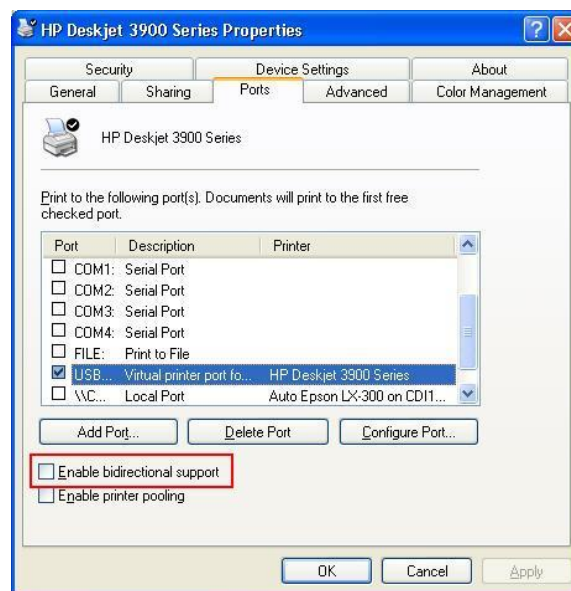
6. Select the ‘This Account’ button and then select ‘Browse’.
7. In the ‘Select User’ window, select the ‘Advanced’ button.
8. Select ‘Find Now’ and select DMS8000_PROC.
9. Restart the PC.

From MM8000, select 'Change Server' in the Composer Properties Management window, and select the SiPass server to connect.

USB Printers

If a USB printer reports a fault condition in MM8000, try to remove the Bidirectional Control option in the printer properties page. Please follow this procedure:

1. Open the USB printer properties window (see picture below).
2. Select the "Ports" tab.
3. Uncheck the option "Enable bidirectional support".
4. Cancel all pending jobs in the spooler (most of them will be named "Check"). If you are not able to delete them, reboot the PC and make sure that the spooler list is empty.
5. Retry MM8000 printouts.



SISTORE AX

Note that SISTORE AX can support only one client at the time. When one MM8000 station is connected to the video unit to show video images, no other station can connect at the same time.

Hardware acceleration of the video adapter may influence the correct display of the SISTORE AX live video when used in MM8000. In case of problems, please reduce the acceleration, typically to a medium setting, following this procedure:

- Right click on Desktop.
- Select Properties and then Setting tab.
- Click the Advanced button.
- In the Window that appears, select the Troubleshooting tab.
- Reduce the Hardware Acceleration and click Apply.
- If still not OK, repeat previous step until the live video shows correctly.

SISTORE MX

In general, we recommend that you use SISTORE MX V2.58 or upgrade to this version. Depending on the version installed, the following difficulties may be encountered:

New in MP4.10-01

Known issues in MP4.10

1. The SISTORE MX 2.55 must be used with the remote player of SISTORE MX 2.57 or later.
2. The archive player shows the control buttons (e.g. Play, Stop, Rewind, etc.) on the very right of the screen and therefore they are not visible most of the time.
Note: The Replay Toolbar (WC1) in SISTORE MX 2.57 player shows up together with the timeline on the left, thus covering the timeline; the actual replay toolbar containing recorded video controls is located on the right and is not visible. In SISTORE Remote Viewer 2.45 and 2.50 you could only see this part of the toolbar (without the timeline).
3. Recording with Pre-trigger (e.g. Automatic recording in case of an event) is not possible.
Note: In order to work with MM8000, SISTORE MXPro 2.45 and 2.50 requires the "Enable Software trigger" checkbox to be checked in the configuration. Instead, with SISTORE MX 2.55 and 2.57, the "Long time recording" schedule also has to be enabled to work-around a defect in the communication with MM8000. Unfortunately, this solution prevents the pre-trigger function from working.
4. Stopping the recording is not possible from the MM8000 (video recording is only stopped when the configured delay expires in SISTORE).

SISTORE CX/SX

New in MP4.10-01

Faults related to loss of camera signals are not supported by MM8000 with SISTORE CS/SX V3.4.

DESIGO PX

When an event occurs from DESIGO PX where the AckRequired flag is active, if the Ack command is not executed on MM8000 and DESIGO PX returns to normal, the Ack command on MM8000 changes to Reset, and the event stays in the event list.

New in MP4.10-01

NK8225 connected in BACnet mode

If a NK is connected to MM8000 over a BACnet link, then a communication fault is displayed on the MM8000 even if everything is working properly.

As a work-around, we suggest to set the "Ethernet" node of the NK8225 "out-of-scan".

Note that, if a real communication problem occurs, it will be displayed as NK8225 unit not reachable.

6 Documentation


All documents were updated to include the new features added in MP4.10. Note the document numbers related to the new STEP numbering.

STEP documentation repository

On the Siemens intranet, the product documentation can be found in the STEP Documentation Repository. The STEP Web Client interface is available at the following address:

https://intranet.sbt.siemens.com/dbcom/en/db_porta/client.asp

The following describes one way to search and find a document:

1. Click on the "STEP WEB Client" image: 
2. Choose "04 Fire -3F" from the "Product Segment" box and select "Activate filter".
3. Select "All" in the Documents section of the Quick Search page and select "Advanced Search".
4. Enter the document number in the "Brochure No." field (e.g. A6V10062509) and press "Enter".

Note: STEP provides no results when the number of found objects is equal to or greater than 200.

→ To learn about other ways to locate a document, see DMS8000 Quick Reference Guidelines for Search and Finding DMS Documents in STEP (A6V10064704).



Note: MP4.10 documentation is delivered in PDF format only. You can find Word versions of all documentation in the STEP repository.

6.1 MM8000 Sales documentation

Product Datasheet (document no. A6V10062415_a_en)

A brief summary of the features provided by the MM8000, available architectures, and networks. It also includes information about system limits and subsystems supported.

System Description (document no. A6V10062417_a_en)

This document is similar to the datasheet, but very much expanded, and more detailed. It describes the MM8000 system and the user interface functionality.

Sales Guide (document no. A6V10062427_a_en)

This guide presents the most important sales arguments. Also, a FAQ section provides the answer to some typical questions.

Sales Presentation (document no. A6V10062423_a_en)

This is a PowerPoint presentation provided by the marketing department. It can be modified, or used as is to show potential customers what the MM8000 can do.

DMS8000 Application & Planning (document no. A6V10063710_a_en)

This document contains a brief discussion of product marketing strategy for all FSP-DMS products, and a moderate level of detail about the architectural configurations supported by MM8000.

Tender Specifications (document no. A6V10062419_a_en)

This document is in the standard Siemens format, but it is designed for use and adaptation(s) by independent contractors responsible for selecting and managing the installation and upgrades of a security system for the final customer.

Offer Template (document no. A6V10062429_a_en)

This is intended as an aid for sales people in the preparation of initial and final offers.

6.2 MM8000 Technical documentation

MM8000 Operation Manual (document no. A6V10062409_a_en)

This manual is an operation guide, meant for end users.

MM8000 Installation, Configuration and Commissioning (ICC, document no. A6V10062413_a_en)

The ICC guide provides step-by-step procedures for installation and configuration of the MM8000. During configuration, this manual should be used in tandem with the DMS8000 Connectivity Configuration guides.

The installation checklist at the end of the document is intended to be used as an aid in gathering information from the customer prior to beginning configuration.

DMS8000 Connectivity Configuration Guides:

- **Network, Fire, and Intrusion (documents no. A6V10062425_a_en)**
- **Access Control (document no. A6V10062451_a_en)**
- **Video (document no. A6V10062457_a_en)**
- **OPC (document no. A6V10065253_a_en)**

This set of documents includes: the DMS8000 Network Fire and Intrusion Configuration guide, the DMS8000 Access Control Configuration guide, and the DMS8000 Video Configuration guide. The set is shipped with all FSP-DMS products and contains information about installing Composer, connecting and activating the hardware (dongle) key, setting up a new project, and configuring the networks and subsystems supported by DMS8000 products. This should be used in conjunction with the ICC guide.

DMS8000 Graphical Map Configuration Guide (document no. A6V10062441_a_en)

This manual described in details the MM8000 graphic editor.

Composer Technical Manual document no. A6V10062401_a_en)

This guide explains how to use Composer in general. It provides a reference to commands and instructions used during the system configuration. Note that the latest edition of this manual describes the new functions that the MP3.20 version Composer can provide.

MM8000 Localisation Guidelines (document no. A6V10062459_a_en)

This guide provides assistance with the localisation of the MM8000 MP3.20 software, including information about using the Catalyst tool.

Maintenance & Troubleshooting

Note: This document is no longer provided. Please refer to the on-line support services (see next section).

Quick reference guides

These short guides (4 to 8 pages A5 format) can be used as reference papers for the most typical software functions. The list of available quick guides includes:

- Operation (document no. A6V10067779_a_en)
- Installation, Configuration Commissioning (doc.no.008598_d_en)

- Graphical maps (document no. 008906_b_en)
- Composer Configuration (document no. A6V10067783_a_en)

Release Notes (document no. A6V10062509_b_en)

This document. It includes all information concerning MP4.10-01.

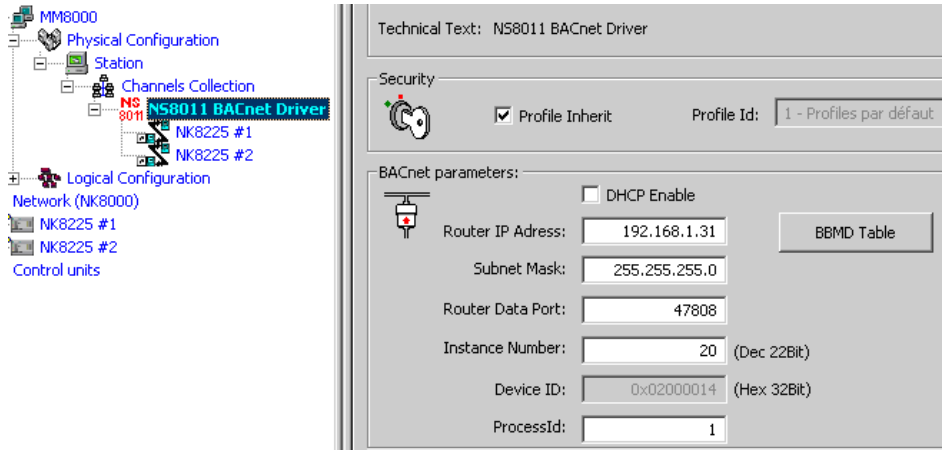
6.2.1 MP4.10 documentation errata

Network, Fire, and Intrusion Connectivity Guide (A6V10062425_a_en)

- Section 3.3.3.2, pag.51, Connecting NK822x to the DMS.

In case of BACnet link, please note that the connection is made between the main NK8225 node (and not the Ethernet node) and the NS8011 driver.

Also, in this case, the BACnet parameters shown in the node tab of the NS8011 (and not documented) must be configured as follows:



DHCP may be used, but it is not recommended in the MM8000 IP networks.

- The Router IP address is typically the same as the MM8000 PC. Only in case of multiple LAN adapters, you can select here the one working with BACnet.
- Subnet Mask should also be configured as for any IP device.
- Router Data Port is by default 47808 (BACnet default) and should be changed, only if really necessary, by an expert engineer.
- Instance Number is the address of the MM8000 server in the BACnet network. Note that this number must be unique on the network for each device.
- ProcessID is 1 by default. Do not modify it. In case more processes will be used, it might be applied in future.
- BBMD (BACnet Broadcast Management Device) Table: these are the routing tables that include the units used for bridging different IP subnets.

Note that the list is automatically populated of the connected NK8225 (not for DESIGO PX). Then, the actual routing devices need to be individually enabled on the corresponding checkbox (see picture below): there must be one routing device enabled per subnet.

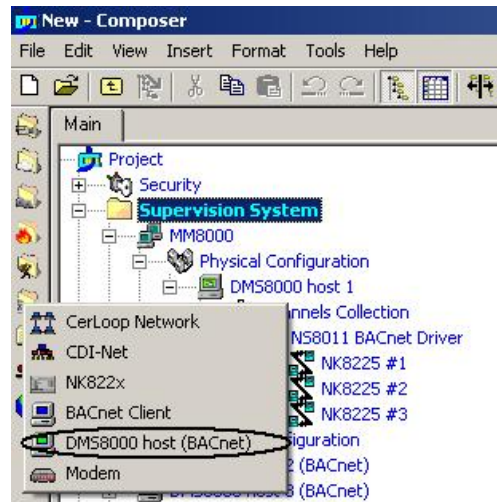
BBMDConfig							
Name	Type	Number	Subnet	IP	UDP Port	Is BBMD	
NK8225 #1	NK	1	192.168.1.0	192.168.1.90	47808	<input type="checkbox"/>	
NS8011 BACnet Driver	NS	1	192.168.1.0	192.168.1.31	47808	<input checked="" type="checkbox"/>	
NK8225 #2	NK	2	192.168.2.0	192.168.2.21	47808	<input checked="" type="checkbox"/>	
NK8225 #3	NK	3	192.168.3.0	192.168.3.14	47808	<input checked="" type="checkbox"/>	

New in MP4.10-01

(NK8225 BACnet connectivity)

- Section 3.3.3.2, pag.52, Connecting NK822x to additional DMS hosts.

In comparison with NK8222/NK8223, the new NK8225 requires a different technique in Composer to configure the connections to multiple management station hosts. Specific nodes, representing the host systems, can be added from the Network menu (see picture below). In the menu, select the option **DMS8000 host (BACnet)**.

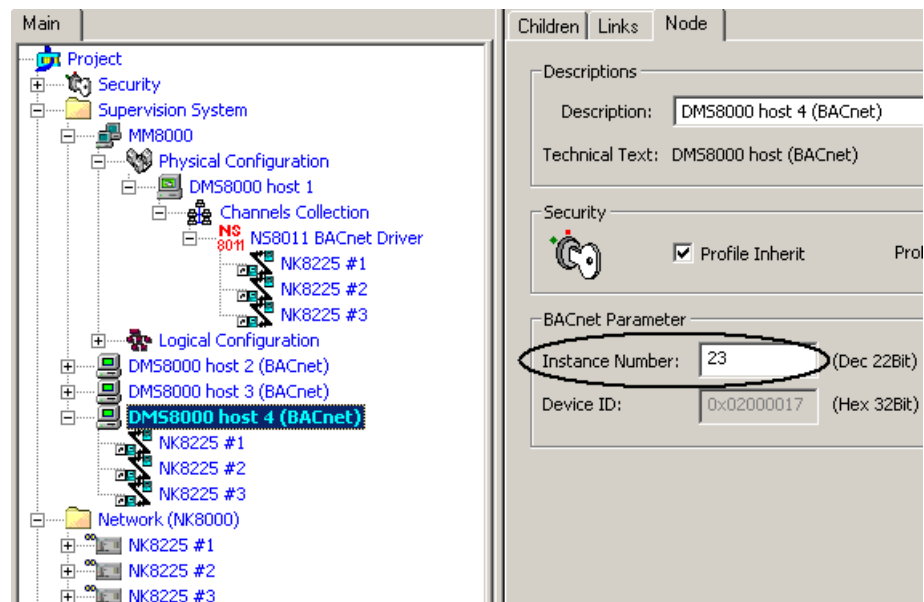


New in MP4.10-01

(NK8225 BACnet connectivity)

Note that each host node must be configured on the Node tab with the corresponding unique BACnet **Instance number** (see picture below).

Then, the main node of the NK8225 can be connected (usual drag and drop) to the hosts (max 4 connections per NK8225).



Video Configuration Guide (A6V10062457_a_en)

- Section 2.10.2, pag.39, fig 34: Configuring the web-based viewer

New in MP4.10-01

(Light-integration Device, web-based viewer)

Referring to the Light-integration Device and to the web-based viewer, the picture illustrates an example of URL (www..., based on HTTP protocol) that is not actually supported. Please note that the only FILE protocol is supported.

For example:

file://D:\IntegratedDevice\htmlPage.html

Documentation

New in MP4.10-01

(MM8000 ICC,
Printer folder)

MM8000 Installation, Configuration, and Commissioning Manual (A6V10062415_a_en)

- Section 4.3.1, pag.39, fig 56: Setting up printers

In step 2, the procedure indicates to select a "print folder" that no longer exists. Please ignore this step.

New in MP4.10-01

(Datasheet,
License information)

MM8000 Datasheet (A6V10062415_a_en)

- "Details for ordering" section, pag.9, Option list

The option list in the Note no.3 does not reflect the current sales policy. Please ignore that note and refer to latest sales policy documents.

7 Customer support links & resources

7.1 Siemens BT FS

Our Customer Support Center intranet site at:
https://intranet10.sbt.siemens.com/about_bt/Business_Units/fs/Customer+Support+Center/?languagecode=en
Updated in MP4.10-01 provides useful information and links. In the Online Support section of this intranet page, software downloads and known product issues can be found in the PSP (password-protected Product Support Platform).
 → The support mailbox is: fs.support.sbt@siemens.com.

7.2 Microsoft

General support about Microsoft Windows can be found at:
 → <http://support.microsoft.com/directory/>

7.2.1 Windows 2000

Windows 2000 support
 → <http://www.microsoft.com/windows2000/default.mspx>

Security issues
 → <http://www.microsoft.com/technet/security/default.mspx>

7.2.2 Windows XP

Technical information, including deployment guides
 → http://www.microsoft.com/resources/documentation/Windows/XP/all/reskit/en-us/prork_overview.asp

Windows XP support
 → <http://www.microsoft.com/windowsxp/support/default.mspx>

Windows XP SP2 - Frequently Asked Questions (FAQs)
 → <http://www.microsoft.com/windowsxp/sp2/default.mspx>

Windows XP SP2 – How to ...
 → <http://www.microsoft.com/windowsxp/sp2/howto/default.mspx>

Security issues
 → <http://www.microsoft.com/technet/security/default.mspx>

7.3 Adobe Acrobat

To view the PDF document is necessary to install the program Adobe Acrobat Reader. You can find its free version at:
 → <http://www.adobe.com/products/acrobat/readstep.html>

8 Appendix A: NICE support

8.1 Introduction

NICE DVR units are supported in MM8000 MP4.10-01 by means of an Add-on package. Supported features include the motion alarm detection as well as the video integration in event treatment, plan navigation, and history search.

Supported models and limitations

Current limitations:

- Supported NICE models: Alto, Pro, NVSat, NVR9000
- Maximum number of connectable DVR units is 150.
- Maximum number of AMS Server is 4.
- Video drivers can be installed in the MM8000 server and not on FEP stations (planned for MP4.15).
- Special types of alarms (e.g. traffic, baggage, intrusion) are all mapped in MM8000 as motion detection alarms.
- Data and time synchronisation fails if a registration is in progress on the DVR unit.
- Redundant AMS Servers cannot be supported, which means that a NICE DVR can be associate to one AMS Server only.

Translation kit

The NICE add-on also comprises a translation kit that includes few new texts to localise using the standard MM8000 procedures.

→ For instructions how to use the kit, refer to the MM8000 Localisation Guide, doc.no. A6V10062459_a_en.

Bug correction

The NICE add-on also includes the following bug corrections:

ID	Description	Notes
8675	Motion detection events, when back to normal condition, used to be closed automatically even if no reset has been executed.	In MP4.10, this applied to SISTORE CX motion detection alarms
8818	Localized resources do not get installed for the following subsystem tools: <ul style="list-style-type: none"> – Sigmasys – Modem – Desigo PX – Simatic S7 PLC – Light integration Device 	This resulted in some non-translated texts to appear in the Composer trees when the corresponding units were created.

License information

MM8000 license must include the required number of connections to the NICE DVR units.

8.2 Installation

The MM8000 software for NICE video is currently provided as an add-on package for MP4.10-01. Note that you need to install MP4.10 first, then update to MP4.10-01 and finally install the NICE add-on.

Prerequisites

We recommend to install MM8000 software after that the NICE software is in place already. In fact, the MM8000 setup provides for a customization of the (previously installed) NICE software environment. The list of NICE applications includes:

- PlayerComponentPackage.msi
- NiceVision API Package.EXE

However, you can also safely install MM8000 first and then NICE software. In this case, however, use the Init_CCTV utility to customize the NICE files afterwards.

→ For information about about Init_CCTV, refer to section 3.4.10.1 (Program utilities) of the MM8000 ICC, doc.no. A6V10062413_a_en.

Add-on installation procedure

1. Make sure that no MM8000 client applications are active.
(including Composer and Simulation tools).
2. Copy the Add-on setup files on a local drive, e.g. in the folder:
C:\MM8000_MP4.10_NICE_Add-on\...
3. Launch the command:
Install_MM8000_MP4.10 - NICE AddOn.exe
that upgrades all the required software components.

8.3 Configuration

Note: this section only presents a brief summary of the configuration process.

The configuration of NICE units is similar to the one for SISTORE DVR that is described in the Video Connectivity Guide (doc.no. A6V10062457), although the NICE architecture can foresee multiple Video Drivers installed on various machines on the network.

In Composer, the **Video Network Manager** must be included in the configuration structure (see Video Connectivity Guide, section 2.2) and then the NICE **Video Drivers** should be created under the video manager to represent the actual configuration in place. Each video driver will be identified by the IP address of the video server machine where the software driver runs.

The actual **DVR units**, also identified by their IP address, will connect to the corresponding video driver to match the actual configuration, which typically distributes the traffic load from the DVR units onto multiple servers.

As usual, Composer represents all connections by drag and drop links made on the project tree (or across multiple trees that Composer can open).

Each DVR unit includes video in/out and alarm in/out objects. For all cameras and monitors configuration, you can refer again to the Video Connectivity Guide.

The video camera coverage is configured graphically or via manual associations as described in the Graphical Map Configuration (doc.no. A6V10062441).



Compatibility issue with SISTORE CX/SX:

Installing the NICE Add-on currently results in the SISTORE CX/SX live video not working properly any more in MM8000. However, a workaround can be applied, please contact technical support for getting detailed information.

Siemens Switzerland Ltd
Building Technologies Group
International Headquarters
Fire Safety & Security Products
Gubelstrasse 22
CH-6301 Zug
Tel +41 41 724 24 24
Fax +41 41 724 35 22
www.sbt.siemens.com