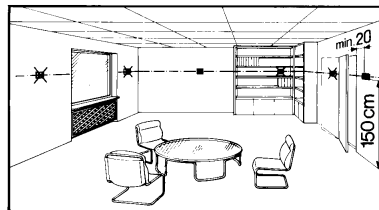
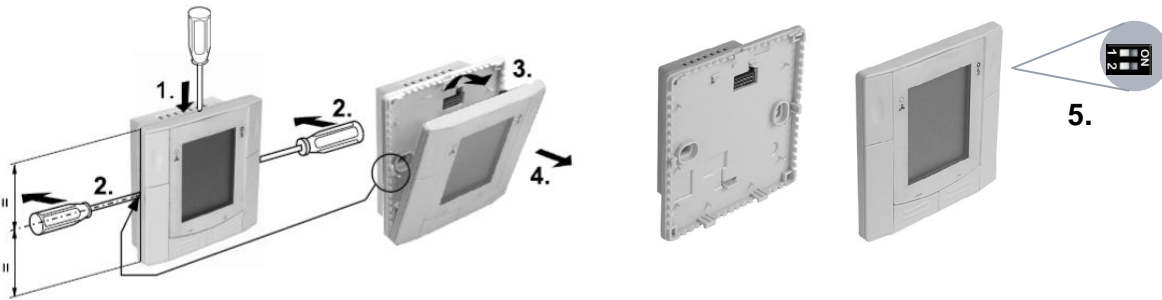


RDF300...  
RDF340...  
RDF400...

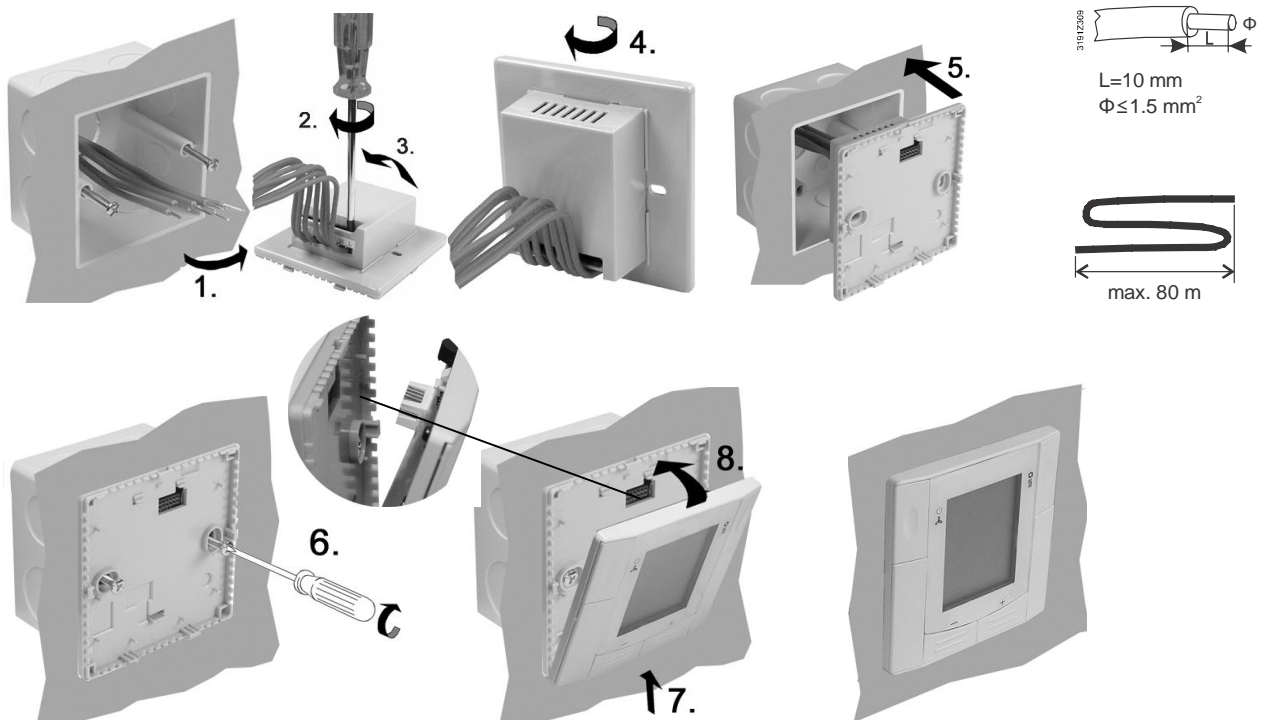
Mounting Location of Thermostat / 温控器安装位置





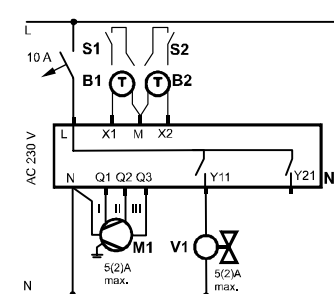
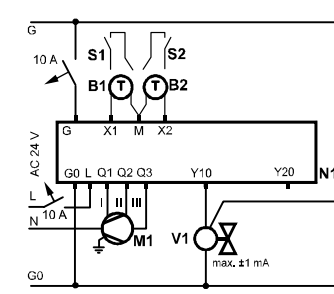
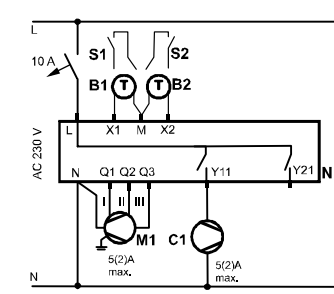
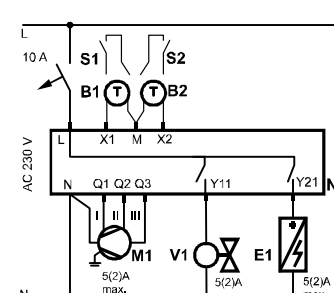
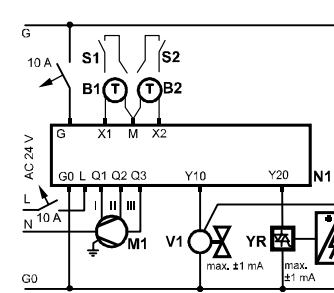
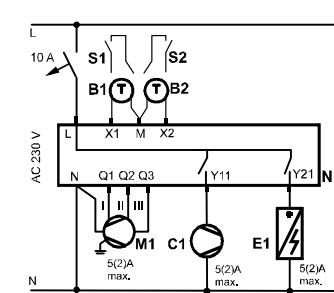
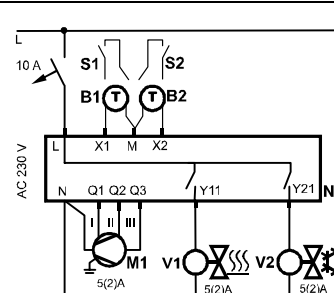
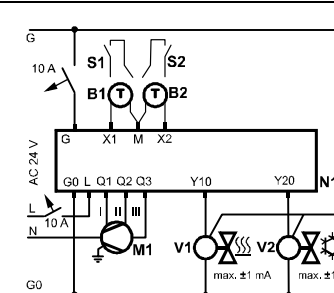
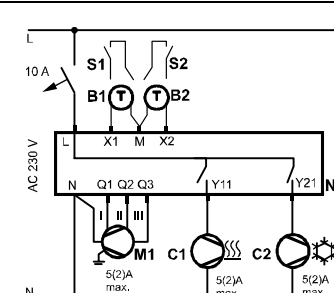
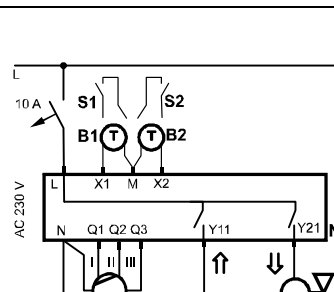
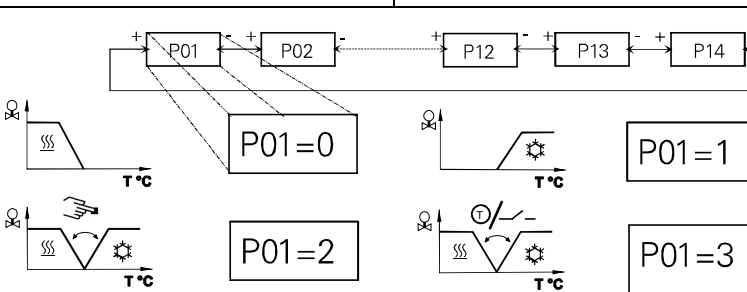
Preparation and Deliverables / 安装前准备



Flush-Mounting / 嵌入式安装



# Wiring Diagrams / 接线图

Application 应用					
	RDF300... / RDF400...		RDF340		RDF300... / RDF400...
2-pipe 两管制 en zh	 <p>△ L-N, Y11/Y21 AC 230 V</p>	 <p>△ G - G0, Y10/Y20 AC 24 V L - N AC 230 V</p>	 <p>△ L-N, Y11/Y21 AC 230 V</p>		
2-pipe & el. heater 两管制, 带电加热 en zh	 <p>△ L-N, Y11/Y21 AC 230 V</p>	 <p>△ G - G0, Y10/Y20 AC 24 V L - N AC 230 V</p>	 <p>△ L-N, Y11/Y21 AC 230 V</p>		
4-pipe 四管制 en zh	 <p>△ L-N, Y11/Y21 AC 230 V</p>	 <p>△ G - G0, Y10/Y20 AC 24 V L - N AC 230 V</p>	 <p>△ L-N, Y11/Y21 AC 230 V</p>		
2-pipe, 3 position output 两管制, 三位控制输出 en zh	 <p>△ L-N, Y11/Y21 AC 230 V</p>				

## Legend: / 图例

N1	RDF3xx / RDF4xx	RDF3xx / RDF4xx
M1	3-speed fan	三速风机
V1, V2	Valve	阀门
C1, C2	Compressor	压缩机
E1	Electro heater	电加热
S1, S2	Operating mode switch-over contact (e.g. key card)	工作模式转换开关 (例如: 门卡)
YR	Current valve	电流阀
B1, B2	Heat/cool changeover sensor	制冷/供热转换传感器

## Dimensions / 尺寸

