

## 7 Reactions and sequences

Configure a reaction when you want an automatic response to a change of state. A reaction is composed of one or more triggers (inputs) and effects (outputs). A reaction can also be manually triggered.

Configure a sequence when you want MM8000 to execute a set of functions that you define in a macro program. A manual command, a time-driven program ('Time program\*'), or a reaction can initiate a sequence. Sequences can also call other sequences.


\* → See section 8.

The following is an overview of what you need to do to create a reaction in Composer:

1. Select Supervisor System settings → MM8000 System → Logical Configuration → User Data → Reactions.

2. Insert the reaction node .

3. Define the reaction settings in the Node tab.

4. Define manual triggers in the field if necessary  (in a separate folder).

5. Configure the reaction.

- Link (drag and drop) trigger points and manual triggers to the reaction node.
- Link (drag and drop) the effect points and the sequences to the reaction node.
- Define the reaction program in the guided editor.

**Note:** You use a similar but more complex editor in Composer to create sequences.

→ For details, see MM8000 Installation, Configuration and Commissioning Guide.

## 8 Scheduler and time programs

The scheduler is where you define organisation modes based on the system time and calendar. An organisation mode is any block of time when MM8000 must behave in a certain way. Organisation modes can also be used in reactions and sequences.

Configure time programs to specify when something will happen in the system. Sequences are linked to time programs that then serve as triggers to activate the sequences.

The following is an overview of what you need to do to configure the Scheduler:

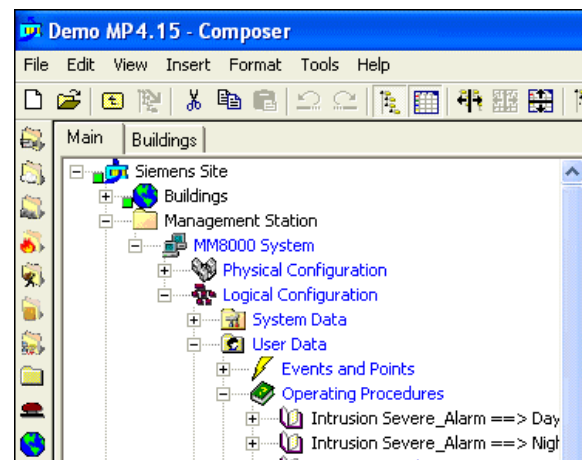
1. Select Supervisor System settings → MM8000 System → Logical Configuration → User Data → Scheduler.

2. Configure 'Organisation Modes and Typical Week'.

3. Add the 'Special Days'.

4. Define the 'Time programs'.

# SIEMENS



## MM8000 Management Station MP4.15 Installation Function & Configuration Commissioning

Quick Reference Guide  
With WW8000 Composer


# 1 CCTV – Video integration

Add the Video Network Manager (VNM) driver to your project for advanced video functionalities.

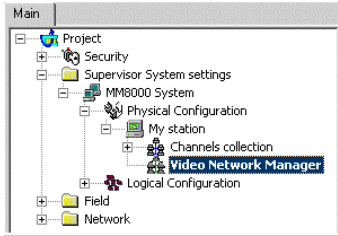
**Note:** Ensure you have all Composer plug-ins installed before proceeding.

→ For details, see DMS8000 Network, Fire & Intrusion Connectivity Guide (STEP#A6V10062425)


1. Select Supervisor System settings → MM8000 System → Physical Configuration → <Station name>.

2. Select the VNM icon  to add the Video Network Manager node.

**Note:** The SIMATRIX subsystem may also be configured without the VNM.



The Camera Extensor tab appears when the Field node is selected, and six new video icons appear left of tree.

3. Select the Video Network Manager node, then select the driver icon  to add the video driver.

**Note:** The video driver is not needed for SIMATRIX.

### Configuration checklist for CCTV network:

- Add cameras
- Add monitors
- Add TELSCAN web servers; SIMATRIX crossbars; SISTORE DVRs; Philips/Burle video switches

### Connect camera and monitor signals:

- Connect camera signals (Video Out): Drag and drop the camera(s) to Video In
- Connect monitor signals (Video In): Drag and drop the Video Out to monitor(s)

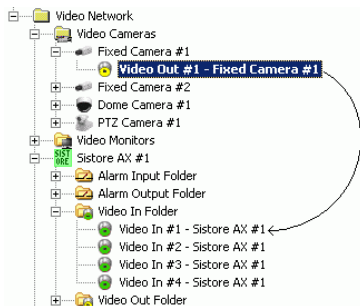


Fig. 1 Connect cameras

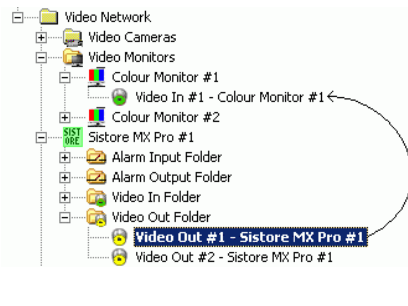


Fig. 2 Connect monitors

→ For details on:

- Camera and monitor types
- TELSCAN, SIMATRIX and SISTORE configuration settings available in Composer
- Specifics on how to connect cameras and monitors (drag and drop)
  - See DMS8000 Video Configuration Guide (STEP #A6V10062457)

# 6 Operating procedures

Configure an operating procedure when assisted event treatment is needed.

**Note:** Select “Guided treatment” when the operator needs to perform a series of steps. Select “Free treatment” to provide the operator with a set of tools to treat the event. (See “C” in Fig. 6.)

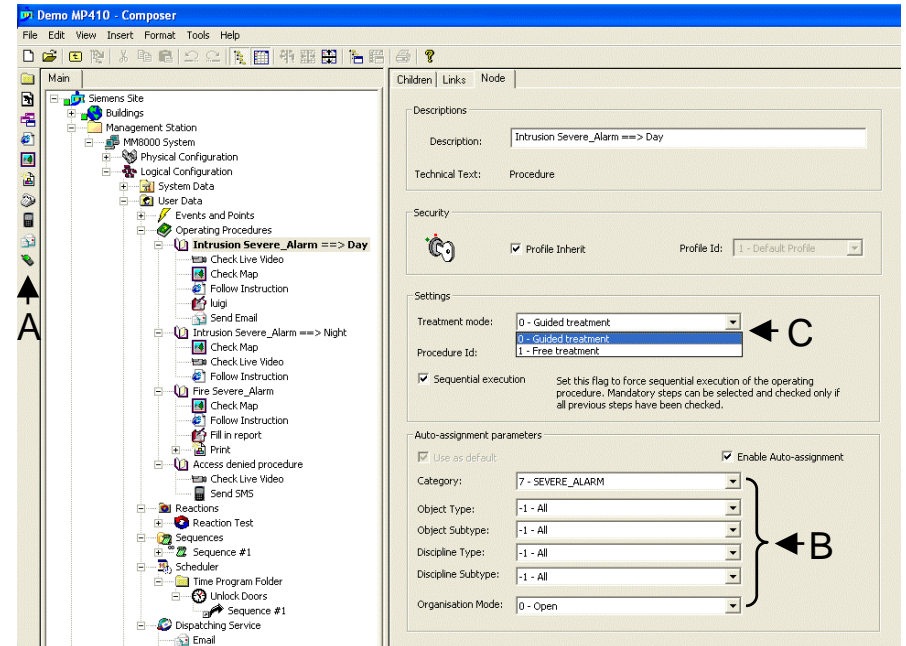


Fig. 6 Define the operating procedure parameters in the Node tab

- A Procedure step icons
- B Auto-assignment parameters
- C Treatment mode setting

1. Select Project → Supervisor System Settings → MM8000 System → Logical Configuration → User Data → Operating Procedures.

2. Select the procedure icon  to insert a new procedure.

3. Enter a procedure description, and specify the security and treatment mode settings, and auto-assignment parameters.

**Note:** If you disable Auto-assignment, you must manually assign a procedure to specific points.

4. Select the procedure node, and insert procedure steps using the icons at left.

**Note:** You cannot change the order of the steps once they are inserted.

5. Set the attributes for each step.

## 5 Geographical tree organisation

The geographical tree represents a facility or structure the way the operator knows it – the way it exists physically. The operator can easily navigate to a specific location by selecting the appropriate node in the tree, and then proceed to perform commands on a detector or group of detectors.

Build top-down, starting with the largest item at the site (i.e. campus or building). Insert:

- Building into campus;
- Floors into buildings;
- Sections into floors;
- Rooms into sections.

**Note:** Use 'Generic' icon to create additional structures.

1. Set up the geographical tree structure.
2. Drag points from the logical tree of the control units to the rooms in which they are located.

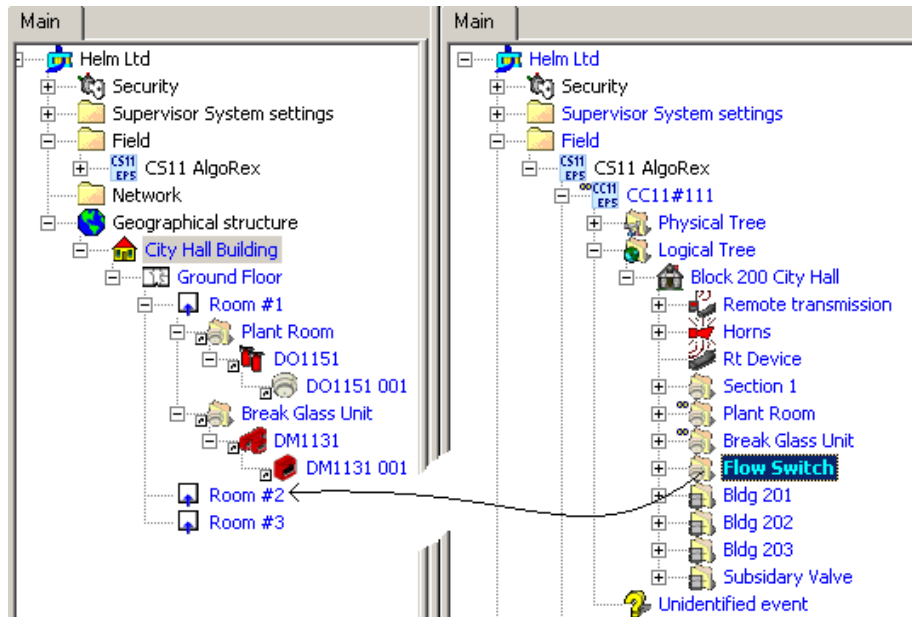




Fig. 5 Drag and drop from the logical tree to the geographical tree

3. Associate security profiles, if necessary.

## 2 Access control

Configure access control for functions related to door command and event management.  
**Note:** Ensure you have all Composer plug-ins installed before proceeding.

**SiPass:**

1. Select the Station name node: Supervisor System Settings → MM8000 System → Physical configuration → <Station name>
2. Select the SiPass driver icon  to add a SiPass driver.
3. Add one or more folders to organise the access control (optional), and then select the icon  to add a SiPass subsystem
4. Link (drag and drop) the SiPass subsystem node to the SiPass Driver node.

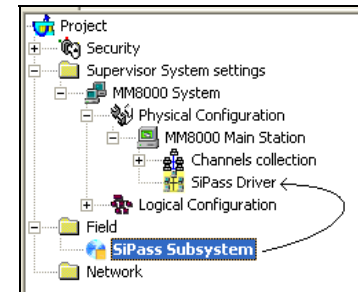


Fig. 3 Link the SiPass subsystem


5. Set the SiPass server address in the SiPass subsystem node Node tab.
6. Import the SiPass configuration in:
  - On-line mode = SiPass server available / configuration data acquired directly  
To do this: Select the 'Connect' button, and then select the 'Align' button.
  - Off-line mode = SiPass server not yet available / configuration data acquired via an export file  
To do this: Select Tools → Import, and then select the file to import.
7. (Optional) Customise individual points and event settings.

→ For details on access control configuration, see DMS8000 Access Control Configuration Guide (STEP #A6V10062451).

### 3 Printers

Configure any printers that will be used by the MM8000 for:

- Journaling: Printout of each event change-of-state
- Reporting: Various history report printouts
- Alarm printouts: Hardcopies of event-treatment text and graphics

1. Select the Physical Configuration node (Project → Supervisor System Settings → <Station name> → Physical Configuration).
2. Select the printer icon  and insert a printer by choosing from one of the following options:
  - "System Journaling" if a journaling (logging) printer will be used for recording system activity
  - "System Reporting" if a printer for history reports is required
  - "System Alarm Printout" if alarm printouts will be used during event treatment
3. Select the printer node then "Browse" in the Node tab to locate the printer you want to select.
 

**Note:** When browsing in the network to locate the printer, double-click on the Network node to open the sub-tree, and continue the navigation until you reach the printer.
4. Select a printer, click "OK", and the printer information will be automatically set in the Composer form.

**Note:** When you select a printer, the Description field will change to indicate your selection. It is recommended you use the Comment field for keeping note of the MM8000 printer application.

#### 3.1 Journaling templates

The Journaling function also requires that the printer get linked to one of the journaling templates available. Drag and drop the System Journaling printer node to the appropriate template.

**Note:** Templates are located in Project → Supervisor System Logical Configuration → System Data → Journaling Services

Currently, the template list includes:

Journaling template:	Printout templa
132x60 Line Printer Complete	132-column line printer. Objects are described by a full location path that includes the entire tree.
A4 Page Printer Complete	A4 laser or ink-jet printer. Objects are described by a full location path that includes the entire tree.
132x60 Line Printer Reduced	132-column line printer. Objects are identified by a location path that is limited to the subsystem sub-tree and by a technical text (CSX number).
A4 Page Printer Reduced	A4 laser or ink-jet printer. Objects are identified by a location path that is limited to the subsystem sub-tree and by a technical text (CSX number).

### 4 Security

Configure who has what event treatment capabilities, and who can see and/or send commands from nodes in the Plant browser. Do this by (refer to Fig. 4 below):

- Defining new user groups and users, if needed
- Assigning user group rights (Client Settings and Event Settings tabs – see Composer)
- Assigning security profiles (drag and drop each user group to appropriate profile – "B")
- Setting user group permissions ("C")
- Associating security profiles to data points ("D")

**Note:** Unless you associate a profile to a node, it will have the "Default" profile, which means that any user group will have full command permissions.

See the following example:

- User "Allen Brimley" is a member of the Advanced Operator Group 1 ("A");
- In the Fire Safety Profile, Advanced Operator Group 1 ("B") is assigned permissions – in this case, he has Full Control (he can see what's happening and send commands) ("C");
- What he can see, and the subsystems he can send commands to are determined by the Fire Protection folder his Profile is associated with ("D" & "E").

Result: Brimley can see events generated by, and send commands to the CZ10 and CS11EP5 subsystems, which inherit the same profile as the parent folder.

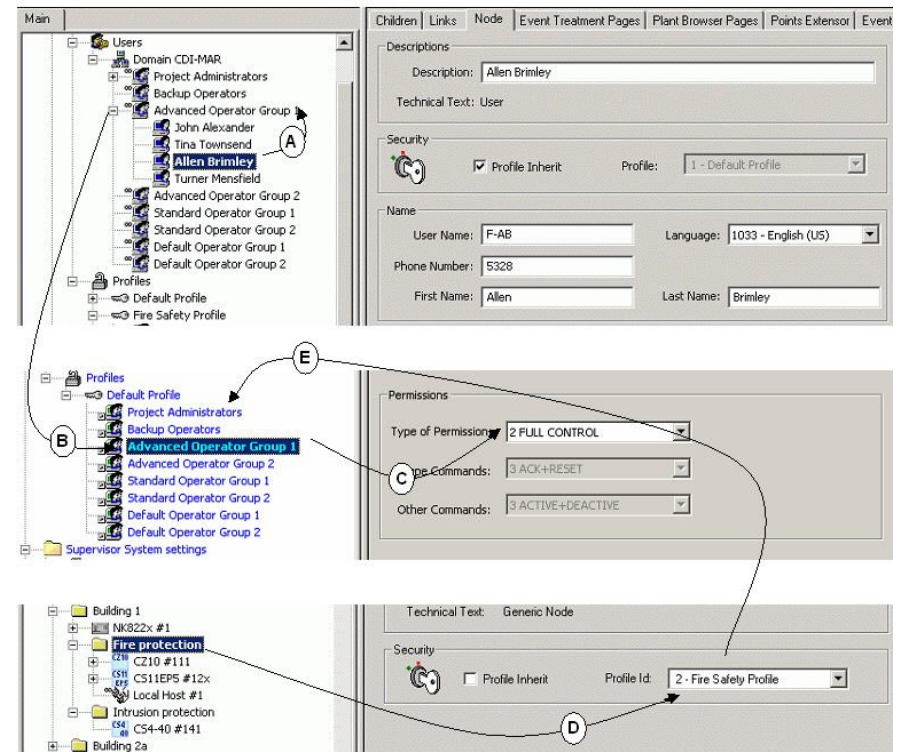


Fig 1 Security profile example

Fig. 4 Security profile example