

InfoCenter Suite Interactive allows you to choose from all the available points in the Active Volume and select a date/time range. The points and data range can be modified at any time, and the displayed chart will update automatically.

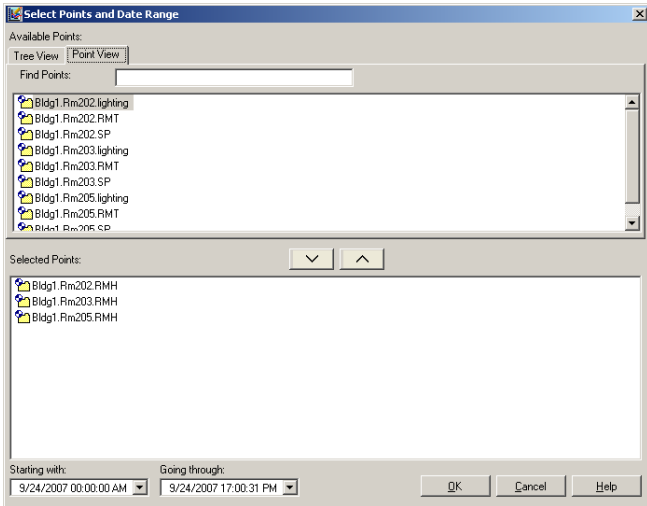


Figure 2. Point and data range configuration.

The chart gallery is used to select the type of chart or function desired. Once selected, the chart is automatically updated. The chart can be modified at anytime by reopening the chart gallery and selecting another type of chart or function.

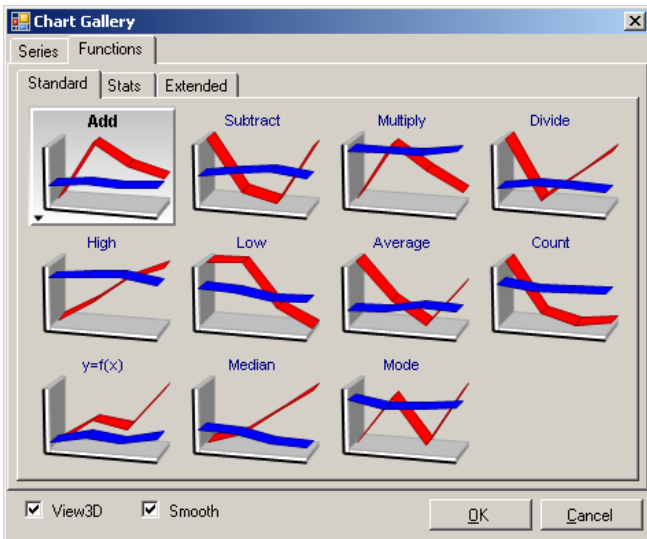


Figure 3. Chart Gallery.

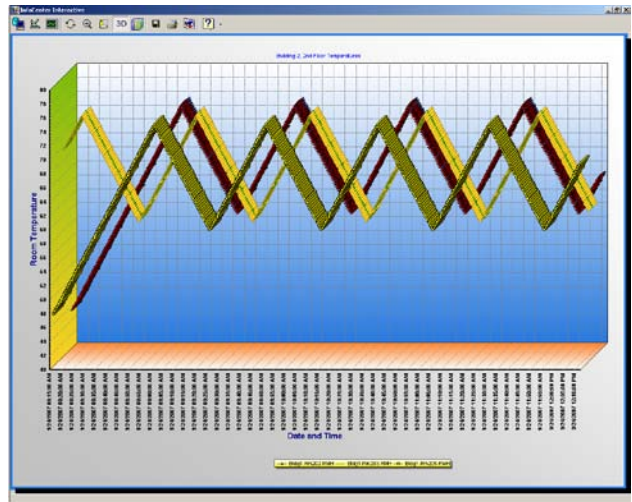


Figure 4. Sample chart.

The displayed chart and data used to calculate the chart can be exported (saved). The chart can be exported to the following file formats:

- Bitmap
- GIF
- JPG
- Metafile
- PDF
- PNG
- Postscript
- SVG
- TIFF
- VML (HTM)

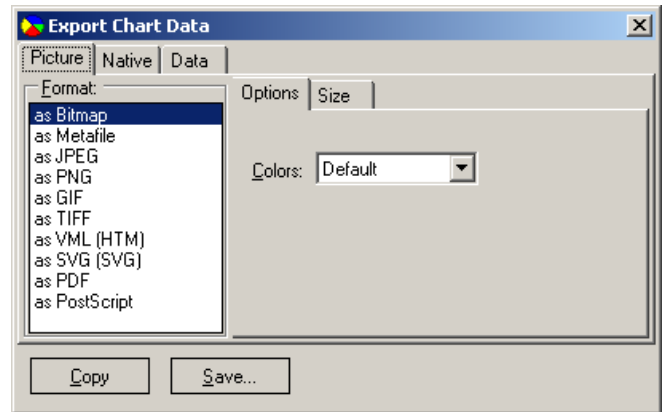


Figure 5. Export Chart Data.

The data used to create the chart can be exported to the following data file formats:

- CSV (Microsoft Excel)
- HTML
- Text
- XML

Specifications

Operating System	Windows 7 32-bit or 64-bit, Windows 8.1 64-bit. Windows Server 2008 Standard or Enterprise edition 32-bit, Windows Server 2008 R2 Standard or Enterprise edition 64-bit, or Windows Server 2012 R2 Standard or Enterprise edition 64-bit.
Recommended Personal Computer	See <i>APOGEE Automation Configuration and Sizing Guidelines (145-236)</i> on InfoLink for hardware requirements.

Ordering Information

Description	Product Part Number
InfoCenter Suite Advanced Server	571-390
InfoCenter Suite Base Server	571-389
InfoCenter Suite Interactive	571-832

Information in this document is based on specifications believed correct at the time of publication. The right is reserved to make changes as design improvements are introduced. APOGEE, Insight, InfoCenter Suite and InfoCenter Server are registered trademarks of Siemens Industry, Inc. Other products and company names herein may be the trademarks of their respective owners. © 2016 Siemens Industry, Inc.