

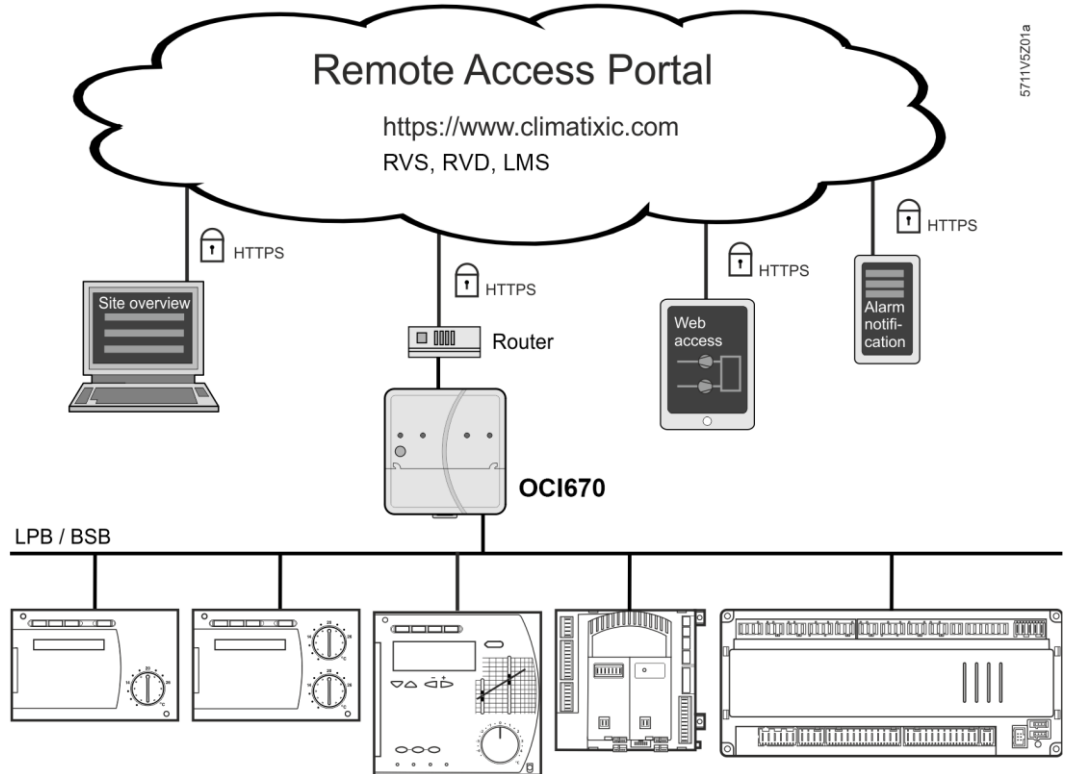
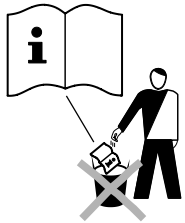


de Montageanleitung
en Mounting instructions
fr Instructions de montage
it Istruzioni di montaggio
es Instrucciones de montaje
pt Instruções de instalação
nl Montage-aanwijzing
sv Installationsanvisning

fi Asennusohje
no Montasjeinstruksjoner
da Installationsvejledning
pl Instrukcja montażu
cs Návod k montáži
sk Návod na montáž
hu Telepítési leírás
el Οδηγίες Εγκατάστασης

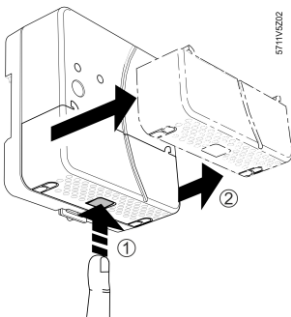
sr Uputstva za montažu
hr Uputstva za montažu
sl Navodila za montažo
ro Instrucțiuni de instalare
ru Инструкция по установке
bg Инструкция за монтаж
tr Montaj Klavuzu

OCI670...

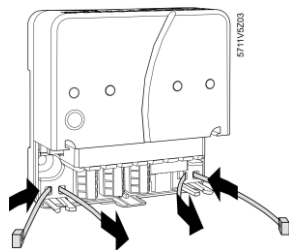


5711V5201a

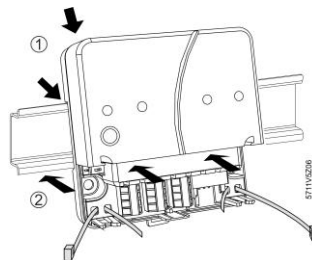
1



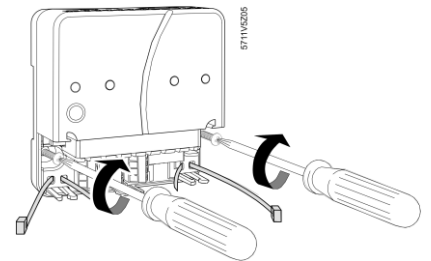
2



3

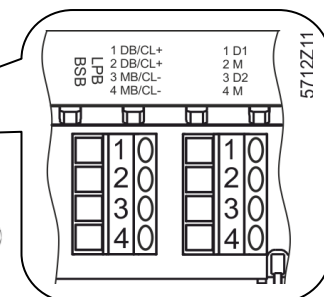
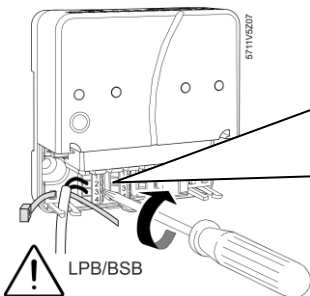


4

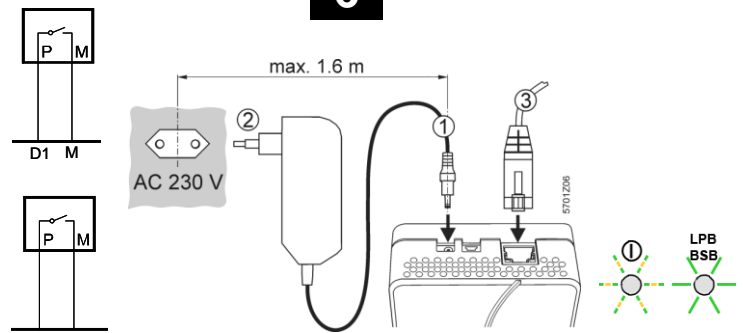


5

	≥	≤
	1 x 0.25 mm ²	1 x 1.5 mm ²
	1 x 0.25 mm ²	1 x 1.0 mm ²
	1 x 0.25 mm ²	1 x 0.5 mm ²



6



7

www.climatixic.com



8

Sign In

[Sign up](#)
 Username

 Password

9

Sign up - Create a new account

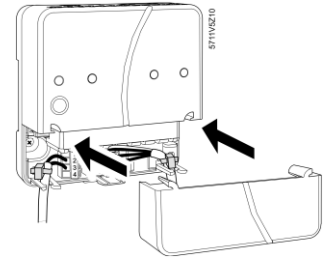
Email address

 New Activation Key

Sign up

 Attention and Acceptance of the Terms of Use


10



Third-Party Software Information

This product, solution or service ("Product") contains third-party software components linked in this document. These components are Open Source Software licensed under a license approved by the Open Source Initiative (www.opensource.org) or similar licenses as determined by SIEMENS ("OSS") and/or commercial or freeware software components. With respect to the OSS components, the applicable OSS license conditions prevail over any other terms and conditions covering the Product. The OSS portions of this Product are provided royalty-free and can be used at no charge.

If SIEMENS has combined or linked certain components of the Product with/to OSS components licensed under the GNU LGPL version 2 or later as per the definition of the applicable license, and if use of the corresponding object file is not unrestricted ("LGPL Licensed Module", whereas the LGPL Licensed Module and the components that the LGPL Licensed Module is combined with or linked to is the "Combined Product"), the following additional rights apply, if the relevant LGPL license criteria are met: (i) you are entitled to modify the Combined Product for your own use, including but not limited to the right to modify the Combined Product to relink modified versions of the LGPL Licensed Module, and (ii) you may reverse-engineer the Combined Product, but only to debug your modifications. The modification right does not include the right to distribute such modifications and you shall maintain in confidence any information resulting from such reverse-engineering of a Combined Product.

Certain OSS licenses require SIEMENS to make source code available, for example, the GNU General Public License, the GNU Lesser General Public License and the Mozilla Public License. If such licenses are applicable and this Product is not shipped with the required source code, a copy of this source code can be obtained by anyone in receipt of this information during the period required by the applicable OSS licenses by contacting the following address:

Siemens AG
 Otto-Hahn-Ring 6
 81739 Muenchen
 Germany
 Keyword: Open Source Request

SIEMENS may charge a handling fee of up to 5 EUR to fulfil the request.

Warranty regarding further use of the Open Source Software:

SIEMENS' warranty obligations are set forth in your agreement with SIEMENS. SIEMENS does not provide any warranty or technical support for this Product or any OSS components contained in it if they are modified or used in any manner not specified by SIEMENS. The license conditions linked below may contain disclaimers that apply between you and the respective licensor. For the avoidance of doubt, SIEMENS does not make any warranty commitment on behalf of or binding upon any third party licensor.

Open Source Software and/or other third-party software contained in this Product:

All open source software components used within the product (including their copyright holders and the license conditions) are contained on the web server, path via USB: <https://192.168.250.1/licenses/>

Issued by
 Siemens Switzerland Ltd
 Building Technologies Division
 International Headquarters
 Gubelstrasse 22
 6301 Zug
 Switzerland
 Tel. +41 41-724 24 24
www.siemens.com/buildingtechnologies

© Siemens Switzerland Ltd, 2017
 Subject to change

