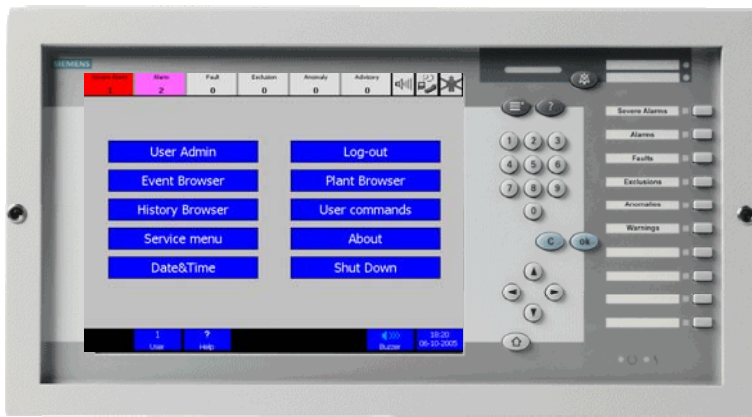


# SIEMENS



## MT8001 MP4.15 Management Terminal Release Notes

Data and design subject to change without notice. / Supply subject to availability.  
© 2008 Copyright by  
Siemens Switzerland Ltd

We reserve all rights in this document and in the subject thereof. By acceptance of the document the recipient acknowledges these rights and undertakes not to publish the document nor the subject thereof in full or in part, nor to make them available to any third party without our prior express written authorization, nor to use it for any purpose other than for which it was delivered to him.

## Table of contents

<b>1</b>	<b>Introduction .....</b>	<b>4</b>
<b>2</b>	<b>What's new in MP4.15.....</b>	<b>5</b>
2.1	Backward compatibility .....	5
2.2	Changes to configuration procedure.....	5
2.3	Approvals .....	5
<b>3</b>	<b>Subsystem equipment and connectivity .....</b>	<b>6</b>
<b>4</b>	<b>Installing configuration tools.....</b>	<b>6</b>
<b>5</b>	<b>Migrating from previous releases .....</b>	<b>7</b>
5.1	Update procedure from MP1.01.....	7
5.2	Update procedure from MP1.10 / 1.20 .....	7
5.3	Update procedure from MP3.15.....	8
5.3.1	Update configuration data .....	8
5.3.2	CompactFlash update procedure from 3.15 using ActiveSync connection .....	8
5.3.3	CompactFlash update procedure from 3.15 using Card Reader.....	9
<b>6</b>	<b>Known issues in MP4.15 .....</b>	<b>10</b>
<b>7</b>	<b>Documentation .....</b>	<b>11</b>
7.1	Sales documentation .....	11
7.2	Technical documentation .....	12
<b>8</b>	<b>Customer support links &amp; resources.....</b>	<b>14</b>
8.1	MT8001 .....	14
8.2	Microsoft.....	14
8.2.1	General support.....	14
8.2.2	Microsoft ActiveSync®.....	14
8.3	Adobe Acrobat .....	14

# 1 Introduction

---

This document applies to the MT8001 MP4.15 and covers the following topics:

- What's new in MP4.15..... p. 5
- Subsystem equipment, versions supported, and connectivity ..... p. 6
- Migrating from previous releases ..... p. 7
- Known issues in MP4.15 ..... p. 10
- Documentation ..... p. 11
- Customer support links & resources ..... p. 14

## 2 What's new in MP4.15

---

This section details the differences between the new MP4.15 and the previous version MP3.15. These include:

- Backward compatibility to Composer MP4.10
- Changes to configuration procedure
- Approval certificates

### 2.1 Backward compatibility

---

MT8001 MP4.15 is compatible with WW8000 Composer MP4.10. This allows the MT8001 Management Terminal to be present in MM8000 MP4.10 projects.

### 2.2 Changes to configuration procedure

---

To configure the MT8001 MP4.15 you must use WW8000 Composer version 4.15. This version of Composer can also be used to configure MM8000 projects.

A new feature in MT8001 configuration is that the MT8001 configuration software will be shipped with all other DMS8000 MP4.15 software on the product CD (MM8000, MK8000, and Composer).

→ For details on installing the configuration tools, see section 4.

### 2.3 Approvals

---

#### **Fire protection approvals**

The MT8001 is approved as an operating terminal for CS11 AlgoRex subsystems by the Verband der Sachversicherer of Germany (VdS), in accordance with the EN54 Norm.

The MT8001 is now also approved as an operating terminal for CZ10 subsystems by the Underwriters Laboratories of Canada (ULC) <sup>1</sup>.

---

<sup>1</sup> ULC approval pending

### 3 Subsystem equipment and connectivity

Control units	Notes about latest version supported	Connectivity and configuration notes	Further info. in DMS8000 documentation
CS11 AlgoRex® EP5 and EP7 FC700A	EP7F Z2.1 (V7.8x)	Direct link, Cerloop, and NK8000	Network, Fire & Intrusion Connectivity Guide: A6V10062425_a_en
STT11		Cerloop and NK8000	Network, Fire & Intrusion Connectivity Guide: A6V10062425_a_en
CZ10 / CC60 / CS440		Cerloop and NK8000	Network, Fire & Intrusion Connectivity Guide: A6V10062425_a_en
CS6 Guarato™	MP3 MP3+	via NK8000	Network, Fire & Intrusion Connectivity Guide: A6V10062425_a_en
SI410/420 Sintony™	Firmware F8-05 <b>F09 not compatible</b>	via NK8000	Network, Fire & Intrusion Connectivity Guide: A6V10062425_a_en
DMS7000 units: MM/MF-7033 etc.		Cerloop and NK8000	Network, Fire & Intrusion Connectivity Guide: A6V10062425_a_en
DF8000/CF9000 I/O (DF8003 or CF9003 + DF8020/8040/8045/8046)		Cerloop and NK8000	Network, Fire & Intrusion Connectivity Guide: A6V10062425_a_en DF8000 ICC: A6V10081388_a_en

Tab. 1 Subsystem equipment, versions supported and connectivity

### 4 Installing configuration tools

Install the configuration tools as follows according to the appropriate scenario:

- MT8001 with MM8000:
  - a. Install complete MM8000 software MP4.10.
  - b. Install ActiveSync V3.8.
  - c. Install MM8000 MP4.10-02 fix with the MT8001 option checked.



**Note:** MT8001 and MM8000 projects cannot presently be merged – two separate projects are required.

- MT8001 without MM8000:
  - a. Install Composer only software MP4.10.
  - b. Install ActiveSync V3.8.
  - c. Install MM8000 MP4.10-02 fix with the MT8001 option checked.

## 5 Migrating from previous releases

### 5.1 Update procedure from MP1.01

---

Composer projects generated in MP1.01 cannot be used with later versions of the MT8001. An entire new 4.15 configuration needs to be entered in the new Composer, reproducing what was done for the 1.01 version.

### 5.2 Update procedure from MP1.10 / 1.20

---

Existing MT8001 1.10 / 1.20 projects must first be updated to MP3.15 before updating to MP4.15 following the procedure below.

1. Install the Composer MP3.15 configuration tool.
2. Start Composer and select 'Restore' in the welcome window.
3. Select the project you want to upgrade.  
*Composer automatically detects an old MT8001 project.*
4. When prompted, select 'Upgrade' in the pop-up window.  
**Note:** If you do not upgrade now, you may do it later by selecting the upgrade function in the MT8001 node → Node tab.
5. Select the following node in the Composer tree:  
...MT8001\Router\Connection driver\MT8001\CS6...
6. Write down the CS6 configuration parameters shown in the Node tab (Subnet / Node / Logical Address).
7. Repeat for each CS6 unit in the project.
8. Delete the driver by selecting:  
...MT8001\Router\Communication driver  
And then press CTRL-DEL.
9. Add an NK8223/NK8225.
10. Link the CS6 node(s) to the LON part of the NK822x.  
→ To learn how to do this, see the DMS8000 Network, Fire & Intrusion Connectivity Configuration Guide (STEP #A6V10062425).
11. Re-enter the CS6 parameters (see step 5 above).
12. Add the NS8012 CDI-Net driver to the MT8001 router.
13. Link the NK822x serial port (typically COM1) to the NS8012 driver.
14. Proceed with the preparation and transfer of your configuration to the MT8001.




---

**Note:** The NK822x local configuration must be downloaded via a LAN network link.

→ See the NK8000 Installation Configuration & Commissioning guide (STEP # A6V10062437).

---

## 5.3 Update procedure from MP3.15

---

Existing MT8001 3.15 projects can be updated to MP4.15 first updating the configuration data, and then the firmware.

### 5.3.1 Update configuration data

---

1. Install the configuration tools according to section 4.
2. Restore the project.
3. When requested, upgrade the XML.
4. When the project opens, select a map and select "Upgrade Map".
5. Repeat step 4 for all maps.
6. Proceed with the preparation and transfer of your configuration to the MT8001, according to either section 5.3.2 or 5.3.3.

Firmware for existing MT8001 3.15 units can be updated to 4.15 following one of the two following procedures (use of keyboard is no longer required):

### 5.3.2 CompactFlash update procedure from 3.15 using ActiveSync connection

---

1. Get the CD with new firmware files. Note the files and folder structure of the MT8001 CompactFlash:
  - \NK.BIN
  - \CEBOOT.SYS
  - \PREVBOOT.SEC
  - \MT8001\HISTORY\... (History archive)
  - \MT8001\COMMUNICATIONLAYER\... (Data and program files)
2. Restart MT8001.
3. During the start-up phase a window "Start ActiveSync" will be displayed. Click the **OK** button to start the connection.
4. In a short time start the ActiveSync connection from your PC.
5. When connected browse the MT8001 files.
6. If you **do not** need the current history archive, proceed as follows:
  - a. Delete "MT8001" folder with all its files and subfolders.
  - b. Copy the entire new set of files of new MP4.15 firmware into the MT8001.If you **do** want keep the history data, proceed as follows:
  - a. In the folder 'MT8001', delete the folder "CommunicationLayer", only.
  - b. Copy the folder "CommunicationLayer" from the new MP4.15 firmware into "MT8001" folder.



Carefully check that the files and folders structure matches the structure reported above and shown in Fig. 1 (the NK.bin and BOOT.SYS files must be present in the CompactFlash root directory).

---

7. Reboot the MT8001 and let the application start-up.
8. Proceed with the download of your configuration to MT8001.



**Never reboot the MT8001 without the files 'BOOT.SYS' and 'NK.bin', or your terminal will be not able to start up again.**

---



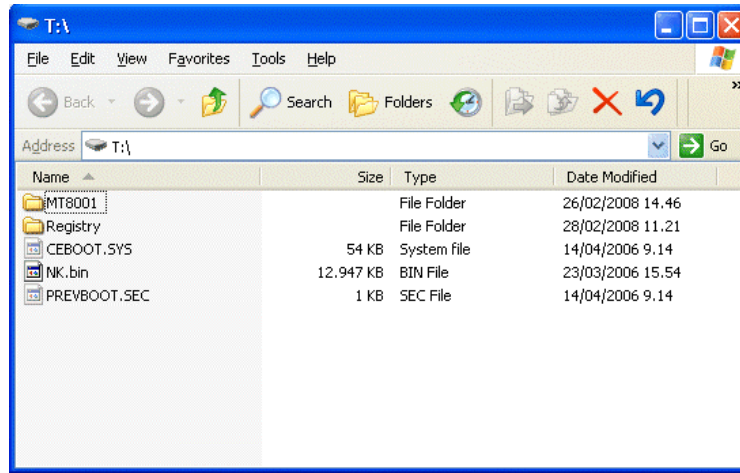


Fig. 1 File and folder structure

### 5.3.3 CompactFlash update procedure from 3.15 using Card Reader

1. Get the CD with new firmware files. Note the files and folder structure of the MT8001 CompactFlash:
  - \NK.BIN
  - \CEBOOT.SYS
  - \PREVBOOT.SEC
  - \MT8001\HISTORY\... (History archive)
  - \MT8001\COMMUNICATIONLAYER\... (Data and program files)
2. Power off the MT8001.
3. Unplug the CompactFlash from the MT8001.
4. Insert the CompactFlash into your Card Reader and connect it to your PC.
5. Select the disk drive related to your MT8001 CompactFlash.
6. If you **do not** need the current history archive, proceed as follows:
  - a. Delete "MT8001" folder with all its files and subfolders.
  - b. Copy the entire new set of files of new MP4.15 firmware into the MT8001.
 If you **do** want keep the history data, proceed as follows:
  - a. In the folder 'MT8001", delete the folder "CommunicationLayer", only.
  - b. Copy the folder "CommunicationLayer" from the new MP4.15 firmware into "MT8001" folder.



Carefully check that the files and folders structure matches the structure reported above and shown in Fig. 1 (the NK.bin and BOOT.SYS files must be present in the CompactFlash root directory).

7. Release the Card Reader from your PC (using the Safely remove USB device) and take out your MT8001 CompactFlash.
8. Insert the CompactFlash into your MT8001 Terminal and power it on.
9. Proceed with the download of your configuration to MT8001.



**Never reboot the MT8001 without the files 'BOOT.SYS' and 'NK.bin', or your terminal will be not able to start up again.**

## 6 Known issues in MP4.15

---

The following is a list of known limitations, problems and bugs, and recommended practises regarding MP4.15 at the time of this market package release.

→ For customer support links, see section 8.1 on page 14.

- The printer is not supervised.
- In some cases, users configured to be unable to close events can close them as the close icon erroneously becomes active.
- Occasionally the Properties page is not refreshed after a user sends a command. In order to refresh the page (to display the new command that should have appeared), the user must close the Properties page and re-open it.
- EN54 (VdS): When a Severe alarm occurs, the immediate display of the Event list does not occur when:
  - The date & time window is open
  - During a Display Test activated from the Service menu. Also, when the Display Test has completed, the Service menu remains on the screen.

The user will be aware of a new Severe alarm by the sound of the buzzer and the corresponding flashing event counter, however the Event list will not automatically display. After one or the other of the above-mentioned windows is closed, the user must select the Event Browser button to display the Event list.

- SI410/420 Sintony
  - The Sintony control unit should be configured to enable the Partition setting while in power supply and communication failure conditions.
  - No commands are supported for “Room” objects.
  - Modifications to the control unit via local terminal configuration should be disabled in order to prevent inconsistencies with the MT8001 database.
  - The LSN-Bus option is currently not supported by MT8001 (the import procedure fails).

## 7 Documentation

---


All documents were updated to include the new features added in MP4.15. Note the document numbers related to the new STEP numbering.

### STEP documentation repository

On the Siemens intranet, the product documentation can be found in the STEP Documentation Repository. The STEP Web Client interface is available at the following address:

<https://workspace.sbt.siemens.com/content/00001123/default.aspx>

The following describes one way to search and find a document:

1. Click on the "STEP WEB Client" image: 
2. Choose "04 Fire -3F" from the "Product Segment" box and select "Activate filter".
3. Select "All" in the Documents section of the Quick Search page and select "Advanced Search".
4. Enter the document number in the "Brochure No." field (e.g. A6V10062509) and press "Enter".

**Note:** STEP provides no results when the number of found objects is equal to or greater than 200.

- To learn about other ways to locate a document, see DMS8000 Quick Reference Guidelines for Search and Finding DMS Documents in STEP (A6V10064704).



**Note:** MP4.15 documentation is delivered in PDF format only. You can find Word versions of all documentation in the STEP repository.

---

### 7.1 Sales documentation

---

#### Product Datasheet (document no. A6V10096155\_a\_en)

A brief summary of the features provided by the MT8001, available architectures, and networks and subsystems supported. Ordering information is also included.

#### System Description (document no. A6V10096189\_a\_en)

This document is similar to the datasheet, but very much expanded, and more detailed. It describes the MT8001 system user interface functionality, product configuration, available architectures, and subsystems supported.

#### DMS8000 Application Planning (document no. A6V10063710\_a\_en)

This global document contains a brief discussion of product marketing strategy for all FS-DMS products, and a moderate level of detail about the architectural configurations supported by the MT8001 MP4.15.

#### Sales Presentation (document no. A6V10096173\_a\_en)

This is a brief PowerPoint presentation that can be used as is, or modified for client presentations. It provides an overview of the MT8001 system.

**Sales Guide (document no. A6V10096197\_a\_en)**

This document contains background information about the target market for the MT8001, potential pitfalls to avoid, and some sales arguments.

**Tender Specifications (document no. A6V10096200\_a\_en)**

This document is currently in the standard Siemens format, but it is designed for use and adaptation(s) by independent contractors responsible for selecting and managing the installation and upgrades of a security system for the final customer.

## 7.2 Technical documentation

---

**Release Notes (document no. A6V10065354\_a\_en)**

This document. It includes all information concerning MP4.15.

**MT8001 Installation, Configuration and Commissioning (ICC, document no. A6V10096181\_a\_en)**

This guide was developed for commissioning engineers and technicians. The ICC guide contains information about system limits, and hardware and software requirements. It provides step-by-step procedures for installation and configuration of the MT8001. During configuration, this manual should be used in tandem with the DMS8000 Connectivity Configuration guides.

**DMS8000 Network, Fire, and Intrusion Connectivity Configuration Guide (document no. A6V10062425\_a\_en)**

Designed for commissioning engineers and technicians, the global DMS8000 Connectivity Configuration guide was created for use with all FS-DMS products. Since the configuration process for networks and subsystems in Composer is the same for all products in the DMS8000 family, those configuration procedures are in this document. It should be used in tandem with the MT8001 Installation, Configuration & Commissioning guide.

**DMS8000 Graphical Map Configuration Guide (document no. A6V10062441\_a\_en)**

This document describes the graphic configuration tool (MapMaker), which is common to both MT8001 and MM8000.

**Localisation guide (document no. A6V10096138\_a\_en)**

This guide provides assistance with the localisation of the MT8001 software, including information about using Catalyst.

**MT8001 Operation Manual (document no. A6V10096185\_a\_en)**

This manual describes how to operate the Management Terminal. The target audience is end users.

### **Quick reference guides**

These concise, convenient guides are designed to serve as “memory-joggers” when configuring or operating the MT8001. The quick reference guide set includes:

- Composer Configuration (document no. A6V10067783\_a\_en)
- Graphical Map Configuration (document no. A6V10069550\_a\_en)
- Operation (document no. A6V10096142\_a\_en)

### **History viewer (document no. A6V10096164\_a\_en)**

This is a guide to using the Event History application that is included with the MT8001 Management Terminal. It details how to transfer history log data from the MT8001 Management Terminal to a PC, and how to use the tool for data analysis and management.

## 8 Customer support links & resources

### 8.1 MT8001

---

**Updated in 4.15**

Our Customer Support Centre intranet site at:

[https://intranet10.sbt.siemens.com/about\\_bt/Business\\_Units/fs/Customer+Support+Center/?languagecode=en](https://intranet10.sbt.siemens.com/about_bt/Business_Units/fs/Customer+Support+Center/?languagecode=en)

provides useful information and links. In the Online Support section of this intranet page, software downloads and known product issues can be found in the PSP (password-protected Product Support Platform).

→ The support mailbox is: [fs.support.sbt@siemens.com](mailto:fs.support.sbt@siemens.com).

## 8.2 Microsoft

### 8.2.1 General support

---

General support about Microsoft Windows can be found at:

→ <http://support.microsoft.com/directory/>

### 8.2.2 Microsoft ActiveSync®

---

In order to install the MT8001 plug-ins correctly, you must have installed ActiveSync on your PC first. Currently, the supported ActiveSync for the MT8001 MP4.15 is version 3.7.

If you do not have a copy of ActiveSync, you can download it from the following Microsoft site:

→ <http://www.microsoft.com/windowsmobile/resources/downloads/pocketpc/activesync37.msp>

## 8.3 Adobe Acrobat

---

To view the MT8001 technical and operation manuals, you need to install the Adobe Acrobat Reader application. You can download a free version of this software from:

→ <http://www.adobe.com/products/acrobat/readstep.html>



Siemens Switzerland Ltd  
Building Technologies Group  
International Headquarters  
Fire Safety & Security Products  
Gubelstrasse 22  
CH-6301 Zug  
Tel +41 41 724 24 24  
Fax +41 41 724 35 22  
[www.sbt.siemens.com](http://www.sbt.siemens.com)