

## 6 System tests

Go to the Service page from the main Menu. This is where you check if different parts of the system are functioning properly.

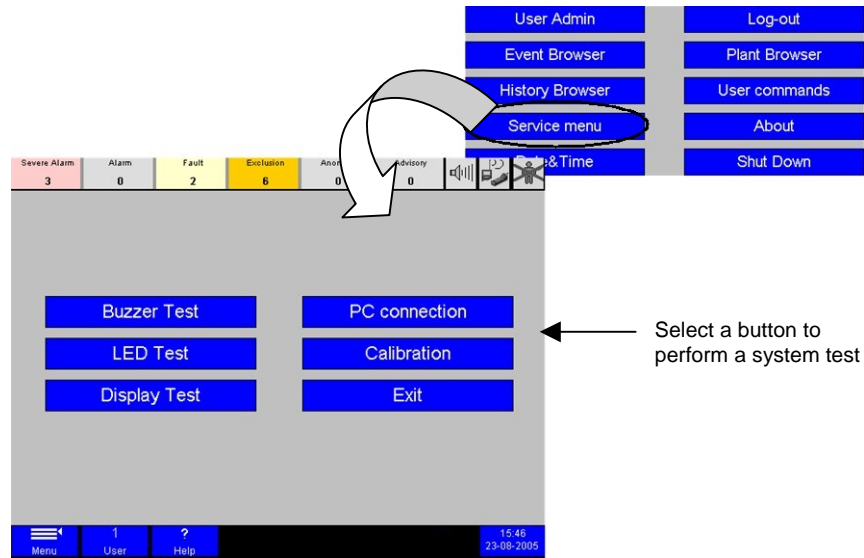
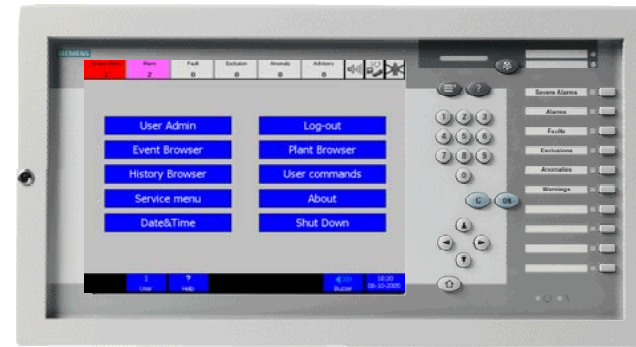


Fig. 8 Service menu page

# SIEMENS



## MT8001 Management Terminal MP4.15 Operation

### Quick Reference Guide

**Note:** This operation quick reference is based on the standard graphic user interface (GUI). Please refer to the MT8001 Operation Manual for the EN 54 Norm and ULC GUI.

Siemens Switzerland Ltd  
Building Technologies Group  
International Headquarters  
Fire Safety & Security Products  
Gubelstrasse 22  
CH-6301 Zug  
Document no. A6V10096142\_a\_en  
Edition 06.2008

Tel +41 41 724 24 24  
Fax +41 41 724 35 22  
[www.sbt.siemens.com](http://www.sbt.siemens.com)

MT8001 Technical Material  
Section 6

**Building Technologies**  
Fire Safety & Security Products

# 1 MT8001 Management terminal

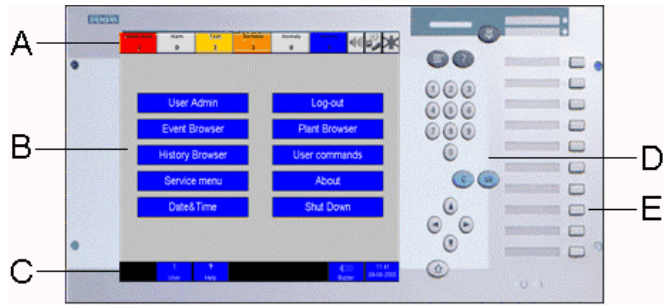


Fig. 1 MT8001 Management terminal

| Item: | Description:  |
|-------|---|
| A     | Summary bar   |
| B     | Work area – example showing main Menu               |
| C     | Menu bar  |
| D     | Keypad panel (use to enter Login ID, for example)   |
| E     | Top six push buttons correspond with event counters |

## 1.1 Event summary bar

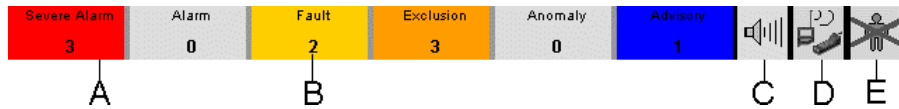


Fig. 2 MT8001 summary bar

|   |                      |   |
|---|----------------------|---|
| A | <b>Event counter</b> | Illuminated and flashing when an event occurs   |
| B | <b>No. of events</b> | Number of events of this type (in this case, Faults)  |
| C | <b>Horns</b>         | Status of the external alarm horns: Colour and appearance indicates current conditions (e.g. activated, in fault, excluded) |
| D | <b>RT devices</b>    | Status of remote transmission device: See “C” above   |
| E | <b>Org. Mode</b>     | Status of alarm organisation: “Set” / “Unset” (See “C” above)   |

## 1.2 Menu bar



Fig. 3 Menu bar

| Select: | To:   |
|---------|---|
| A       | Display the main Menu   |
| B       | Display the user Log-out window                                   |
| C       | Activate Help. Touch the screen to view a tool tip for that item. |
| D       | Silence the buzzer  |
| E       | Display the Date & Time window                                    |

# 5 Commands and user feedback messages

Go to the User commands page from the main Menu. This is where you easily and quickly perform complex commands configured specifically for you.

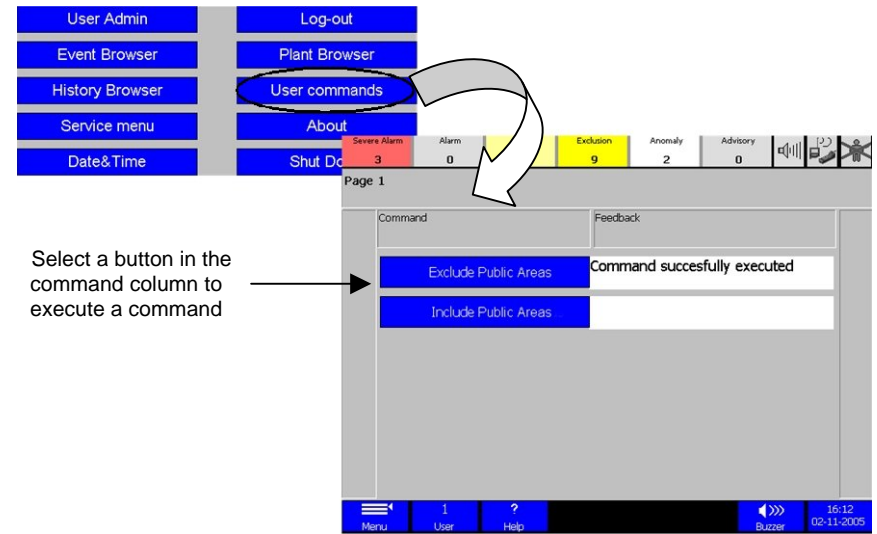


Fig. 7 User commands page

The Feedback column tells you the status of the command you sent. Some examples are:

- Command sent = command is being executed
- Command successfully executed = all macros in the command executed
- Command timeout = command not successfully executed – select the Rollback button (see below)



If you see the Rollback button appear in place of the command button you pressed, select it. This button only appears when a command was partially executed, but not completely.

Normally, when this button appears, you will see ‘Command timeout’ in the Feedback column. “Rollback” resets all detectors that may have been changed back to their original settings – that is, before you issued the command.

## 4 History Browser

View previous event details (organised by date) on the Protocol and Report pages.

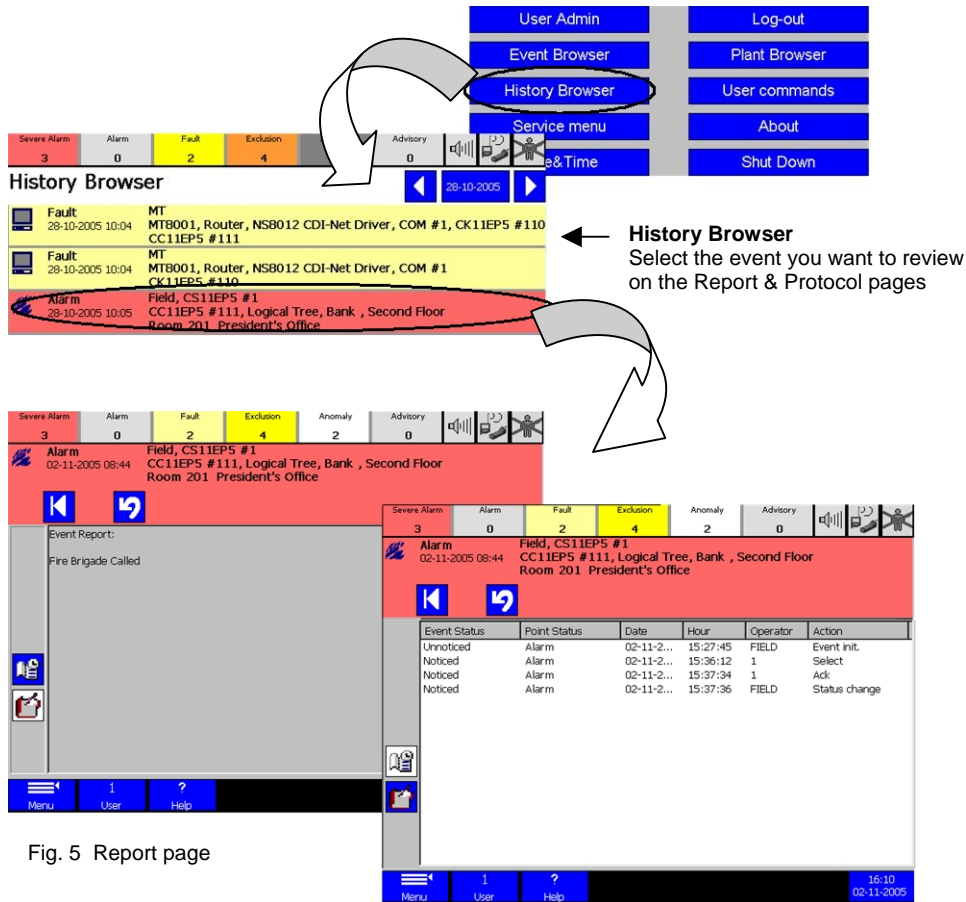


Fig. 5 Report page

Fig. 6 Protocol page

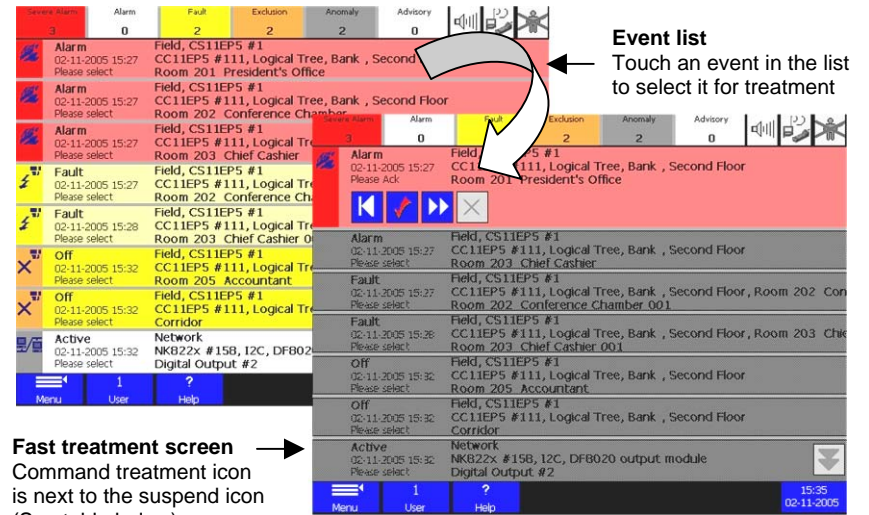
- Select:**
- See the Event list for the previous day or the next day, respectively.
  - Display the calendar, then touch the date you want to view.
  - Display the Report page or Protocol page, respectively. (See Fig. 5, 6 above.)
  - Return to the main Menu.
  - Go to the Event Browser.
  - Go back to the History Browser page.
- To:**

## 2 Event Browser

Get to the Event Browser by selecting the 'Event Browser' button on the main Menu page.

### 2.1 Fast treatment

Quickly treat an event directly in the Event list by using the treatment icons.



| Common treatment icons: |                       | Command icons always present: |  |
|-------------------------|-----------------------|-------------------------------|--|
|                         | Acknowledge the event |                               | Suspend event treatment and return to the Event list                   |
|                         | Reset the event       |                               | Close the event – greyed-out until the event can be closed (see above) |
|                         |                       |                               | Go to assisted treatment (see section 2.2 next page)                   |

### Filtering the event list:

Display events of only one category by activating the filter. To do this, touch the event counter for the category you want to filter for. To deactivate, touch it again or touch the filter off button.

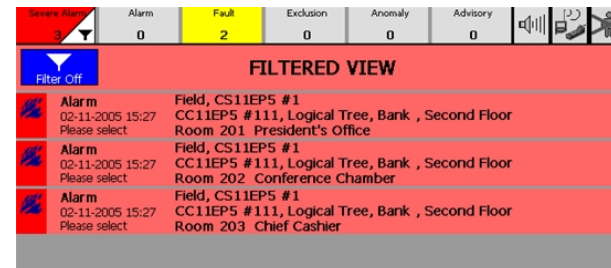




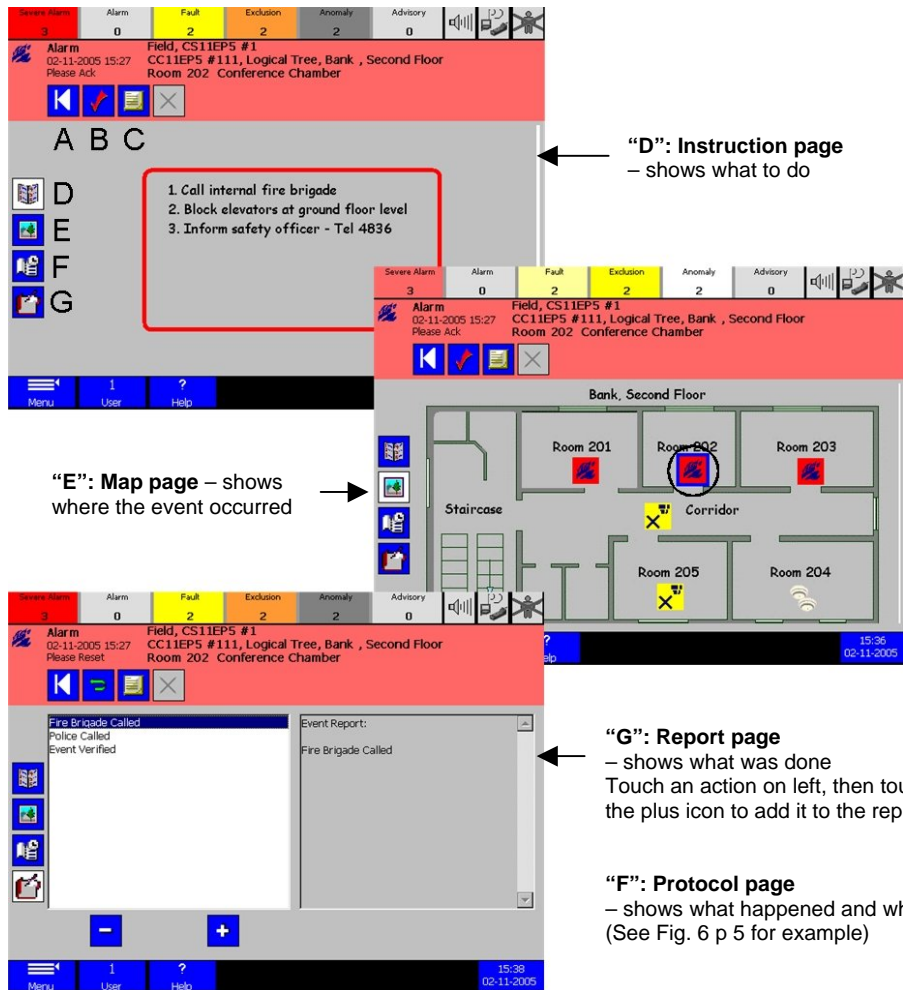


Fig. 4 Filtered Event list for Severe alarms

## 2.2 Assisted treatment

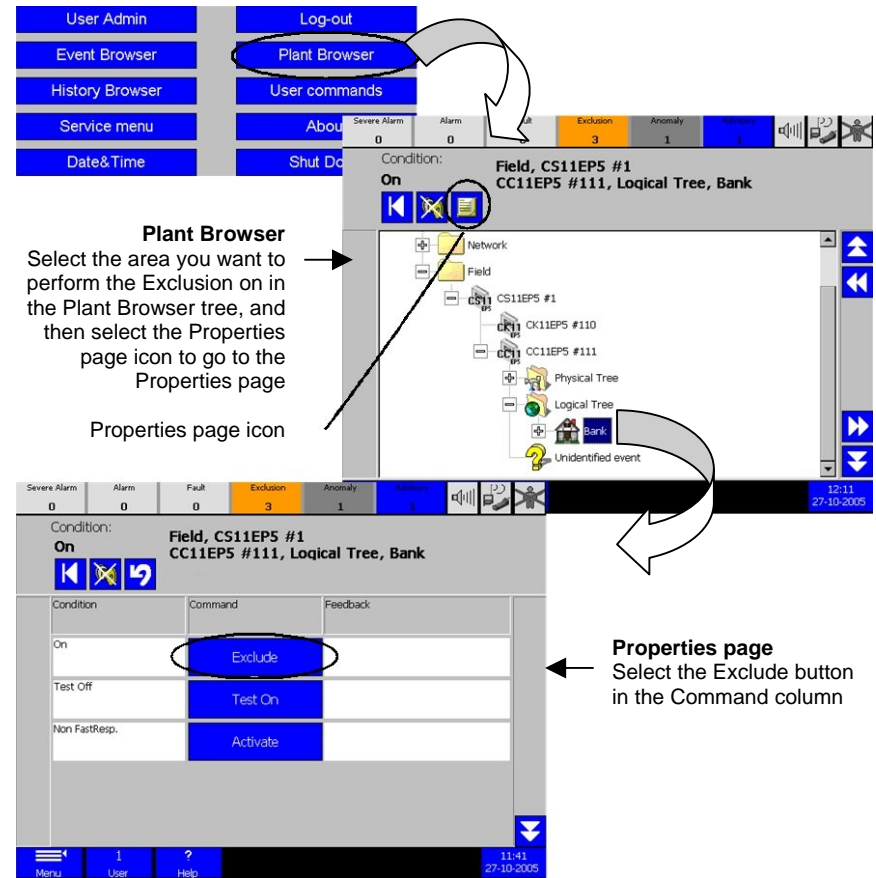
Select an event, then view up to four assisted treatment pages by selecting the assisted icon 


|   |   |
|---|---|
| <b>Select:</b>  | <b>To:</b>                                  |
| Command treatment icon (e.g.  - see "B" below) | Treat the event                             |
| Assisted treatment page icon (see "D" through "G").   | See instructions, view where, file a report |
| Properties page icon  (see "C")                | Send additional commands                    |
| Suspend icon  (see "A")                        | Return to the Event list                    |





## 3 Plant Browser

This section tells you how to use the Plant Browser to exclude an area.



**Note:** In the example above, it is also possible to perform the Exclusion from the hierarchical tree page by selecting the command icon above the tree (in this case )  
Command icons are not always present on the tree page.

|   |  |
|---|--|
| <b>Select:</b>  | <b>To:</b>                             |
|  | Go to the Event Browser.               |
|  | Go back to the hierarchical tree page. |