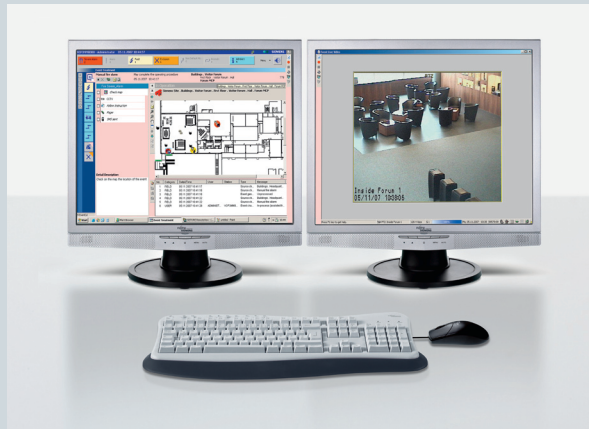


From LMSmodular to MM8000

Modernization Solutions for Danger Management Systems



■ Step into the future

The LMSmodular system has always stood for the integrative networking of fire and intrusion detection systems. The stepwise replacement of this proven Siemens security system makes sense for a number of reasons. With the migration to a MM8000 system, system-related limitations of the LMSmodular can be overcome. For example:

- The required operation of the system can be secured through a number of hardware and software packages.
- New applications can be integrated into the system's platform at any time.
- Business processes can be significantly simplified.

As a leading provider of security solutions, Siemens offers comprehensive modernization concepts which have been properly thought-out and tested. With our experience from numerous modernization projects, you can ensure a smooth transition from your current system to a more efficient, flexible and open danger management system.

■ Modernization brings you numerous benefits

The MM8000 has a number of interfaces for integrative data management. It simplifies the interaction between intrusion detection, access control and video surveillance systems through the use of one common user interface. A standard, customer specific visual or graphical user guidance tool ensures the user-friendliness of the system. Thereby, contributing to the reduction of process-related costs. All good reasons for the stepwise transition to a more modern technology.

■ Investment protection

- Existing peripheral systems (intrusion detection, fire safety) can be integrated into the MM8000 system.
- Existing customer specific data can be taken over.
- Networking between locations through the use of LAN/WAN technologies becomes possible.

■ Flexible and adaptable

- For individual buildings as well as for building networks.
- Quick and easy to configure.
- Client/server application for centralized or decentralized solutions.

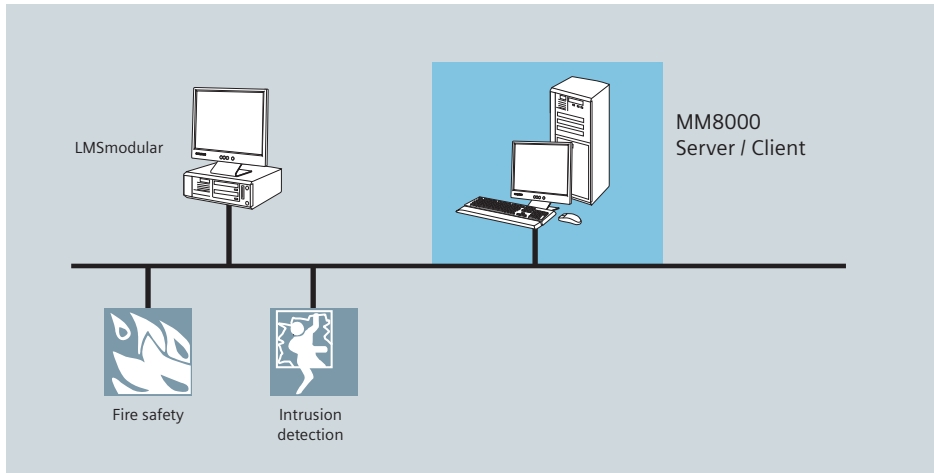
■ User-friendly

- Clear user concept to facilitate work processes through guided, step-by-step access to detailed information.
- Simple and clear presentation of events.
- Guided handling of events; sensible steps based on predefined sequences and time lapses.

■ Scalable

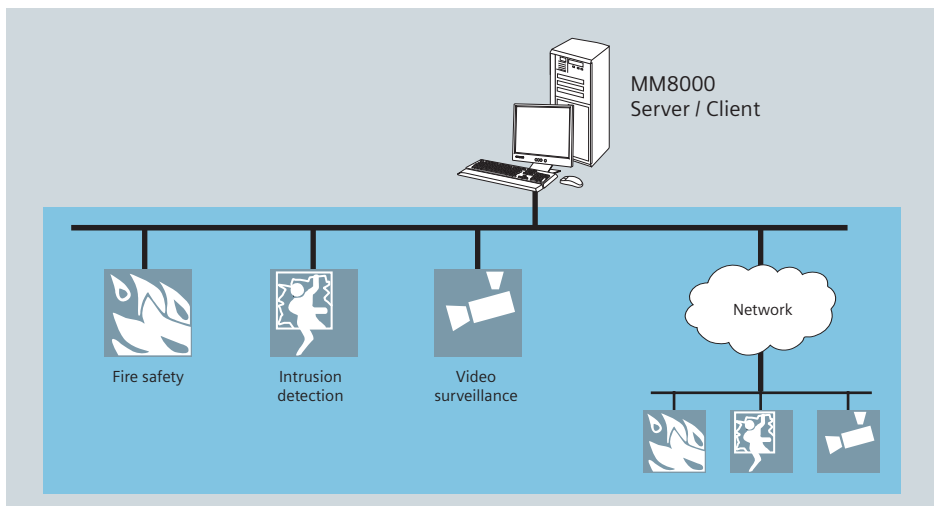
- Intrusion detection, fire safety, access control, video surveillance and communication systems can be integrated at any time.
- Enhanced functionality e.g. improved alarm verification and interaction through direct control of the video surveillance and access control systems.
- Open to third party systems and system enhancements.

Modernization: From LMSmodular to MM8000



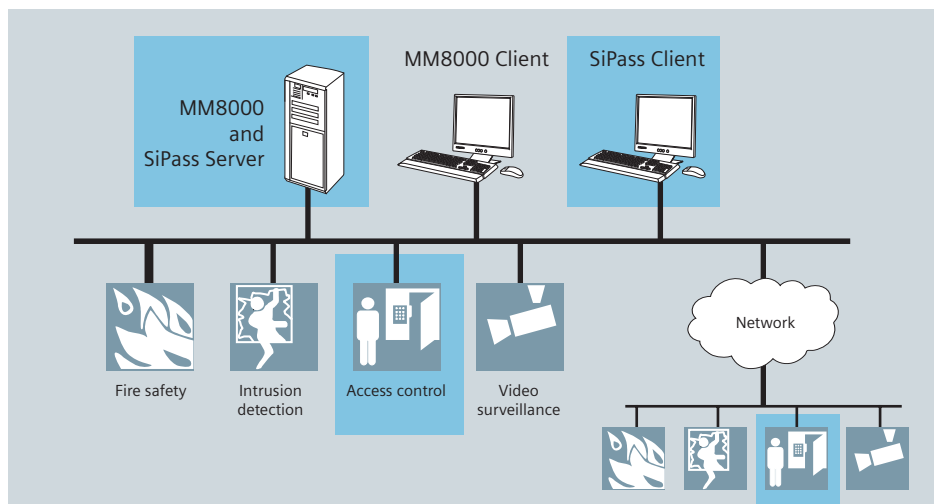
Step 1

Uninterrupted parallel operation of both the LMSmodular and MM8000 systems during transition.



Step 2

Step-by-step modernization of the fire safety and intrusion detection systems. Additional integration of video surveillance systems as well as integrative management of local and dispersed systems (LAN/WAN).



Step 3

Integration of the SiPass access control system into the MM8000 danger management station.

Quality and reliability are the preferences of our world today – both are synonymous with Siemens. Advantage™ Services provides a comprehensive service portfolio for your building's infrastructure covering building automation, fire and security. These services are designed to enhance performance, deliver protection and create real value over the entire life cycle of your facility, thereby allowing you to concentrate on your core business.

Siemens Switzerland Ltd
 Industry Sector
 Building Technologies Division
 International Headquarters
 Gubelstrasse 22
 6301 Zug
 Switzerland
 Tel +41 41 724 24 24
 Fax +41 41 724 35 22
www.siemens.com/advantageservices