



CCTV

SISTORE AX –
get the images you need



Answers for infrastructure.

SIEMENS



Simple and secure – with digital technology

SISTORE AX offers all the advantages of digital video surveillance in a single compact unit. Developed for smaller applications, SISTORE AX can be used anywhere for recording up to 16 cameras, for example in petrol stations, small shops, supermarkets, museums etc. Quick and easy to install, SISTORE AX is particularly simple to operate. Flexible control, efficient MPEG4 compression, easy access to recorded images and powerful search functions ensure that you always get the images you need.

Innovative features of the SISTORE AX

■ Recording up to 200 images per second

Depending up to 200 images per second can be recorded with the SISTORE AX, resulting in more images recorded with the highest quality. This ensures that with every camera even the fine details of fast moving objects are recognisable.

■ MPEG4 technology

Proven MPEG4 technology provides a good balance between efficiency of compression and image quality, therefore making it an excellent choice for storing and transmitting video images.

■ Graphical user interface for intuitive operation

The simple and logically laid out graphical user interface allows easy configuration and operation with minimal training requirements.

■ Transmission via LAN or xDSL

Both live cameras and recorded images can be transmitted via LAN or xDSL.

■ Viewing and searching using a standard Web browser and RAS software

New SISTORE AX models can be remotely accessed via a standard Web browser for both live and playback viewing. In addition to a Web browser, images can be viewed and retrieved from one or more remote work stations via supplied licence-free remote administration software (RAS).

■ PTZ control for dome cameras and PTZ units

Most SISTORE AX models can control both dome and PTZ cameras via the unit front panel buttons. This includes the storing and recall of camera presets.

■ Integration to SiPass access control systems

SISTORE AX can be connected to SiPass access control systems from Siemens without any additional integration – interoperability built-in as standard.

■ Full flexibility for operating and controlling the unit

The SISTORE AX has an easy-to-use front panel for direct unit control. All models include RAS software and can be operated with the CKA4820 keyboard and USB mouse. In addition, some SISTORE AX models have an infrared remote control, giving you complete flexibility for use.

■ Triplex operation

SISTORE AX is a “triplex” system – a system that enables the user to record, view live images and replay previously recorded video at the same time.

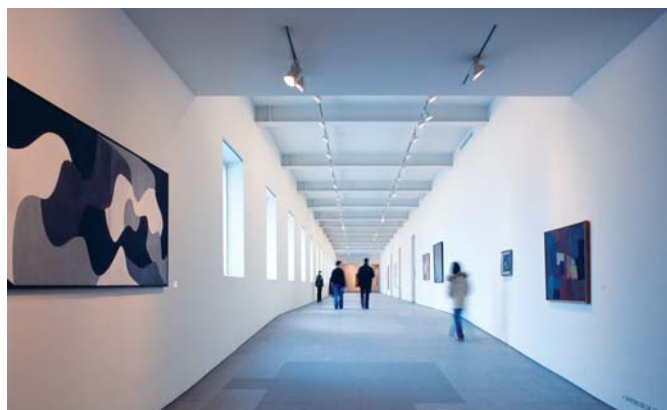
■ Flexible archiving options

In addition to storing video images on its internal hard drive, the SISTORE AX can archive data to the built-in DVD drive and external devices. These include USB memory sticks and external hard drives for true archiving flexibility.

Highlights

- Remarkable image quality
- Optimised storage capacity utilising MPEG4 technology
- Easy configuration and operation
- Viewing and searching using a standard Web browser and RAS software
- Flexible archiving options

Museums



Small shops





CKA4820 Remote keyboard control

SISTORE AX – simple and flexible

Record for more than a month in a single unit

Utilising MPEG4 technology, enables even the smallest SISTORE AX4 Lite unit with four cameras to record images continuously for more than a month. The recorded data is protected against tampering with a digital signature so that the authenticity of each recorded image can be verified.

Recording modes

SISTORE AX can provide an optimised recording mode for any situation. Both recording speed and image quality can

be increased in response to an external alarm input or built-in activity detection, therefore recording more information. During standard time-lapse recording both image quality and recording speed can be decreased to reduce the storage space required, therefore optimising achievable recording times.

Furthermore, if a video signal loss alarm occurs on a camera, the SISTORE AX can start recording an additional camera in the same room. This allows the cause of the video loss to be determined quickly and easily.

Highlights

- Optimised recording time using multiple recording modes
- Quick and easy searching

SISTORE AX Watch

Enables image live viewing by drag&drop of the camera to the desired screen location. Status display of SISTORE AX remote devices and site plan functionality allow full control of the system.

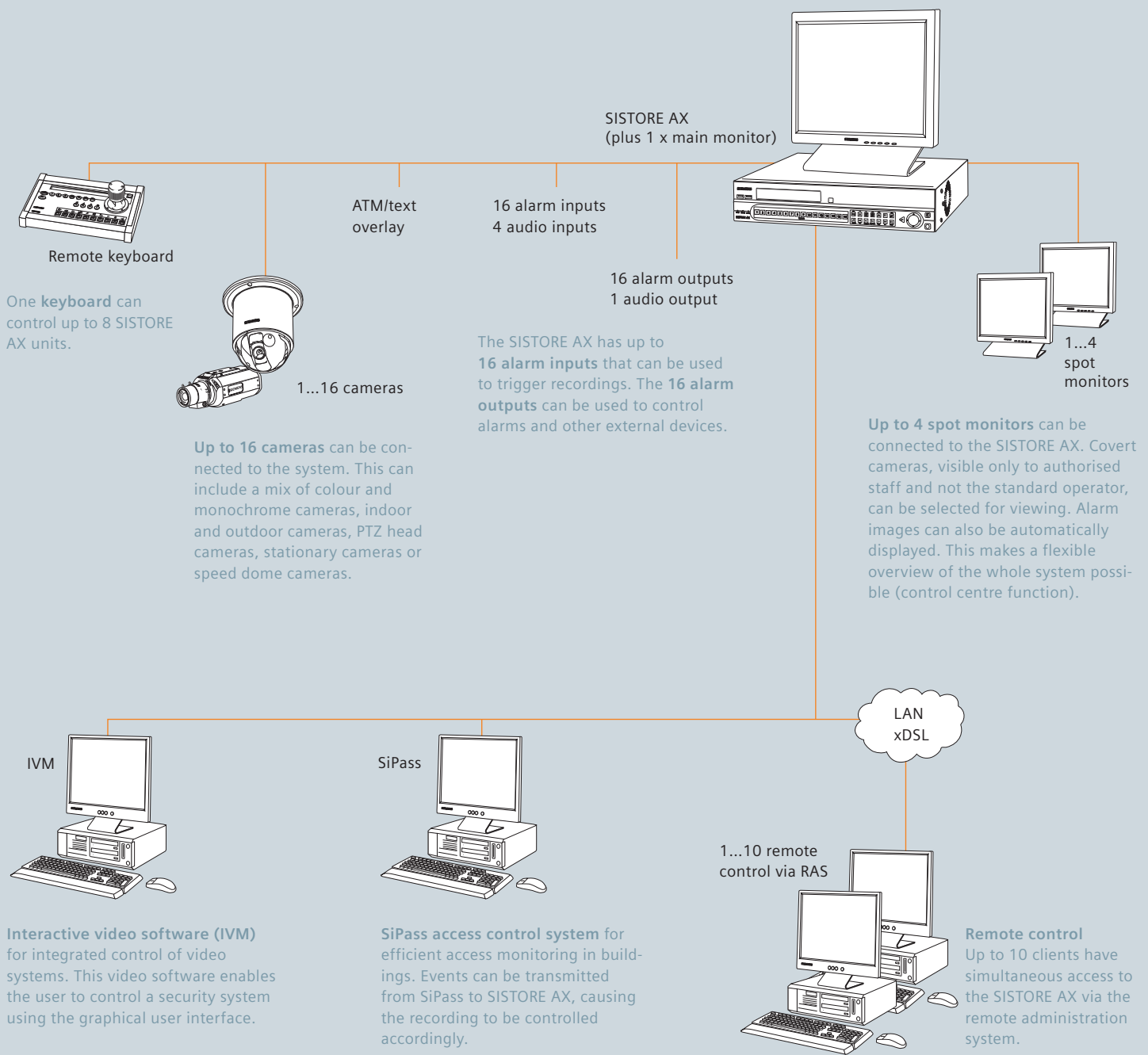
SISTORE AX Search

Enables search and replay of recorded images via RAS using time periods and particular events.

SISTORE AX Player

Enables images to be replayed after checking the encryption.





Pre-event recording can be configured to allow better determination of what led to an event, by recording images of the event itself as well as immediately beforehand.

■ Flexible searching

The powerful search functions of the SISTORE AX help you find the images you need quickly. Searching is possible using time and date, by particular events and

by individual camera. With the museum search function it is possible to search for footage in which particular objects (such as vases or paintings) have been moved from their place. Simply placing a box around the relevant area allows quick and easy searching. Video loss events and text entries from cash registers can also be used as search criteria, therefore providing powerful search flexibility.



What else SISTORE AX can offer

■ Transaction devices

Alternatively, the SISTORE AX can also be connected to a transaction device, such as an ATM or a POS system (Point-of-Sale). This allows detailed transaction information to be recorded with the relevant video and used as supplemental information and for searching.

■ Audio recording

SISTORE AX8 500/200 and SISTORE AX16 500/200 models allow audio recordings for up to four audio channels. Linked with the images of particular cameras, the audio recordings can be replayed from the unit via external speakers (not included with delivery), transmitted over the network or saved to an external archiving medium.

■ Assigning rights

SISTORE AX ensures the highest security and flexibility when accessing the system via configurable administration rights.

■ Dual encoding

The transmission rate and image quality for streaming to the remote client can be configured independently of the local recording rate and quality. This enables the transmission of video images with lower bandwidth to match existing network infrastructure limitations without affecting local recording.

■ Covert camera mode

Any camera can be recorded, but not displayed depending upon the user level, so cameras monitoring cash registers could only be monitored by managers for example.

■ "Panic button"

SISTORE AX offers "panic button" recording to provide better support of security personnel. Pressing the panic button in suspicious situations starts recording all cameras at the independently configurable panic mode. This allows the lower quality and frame rate of time-lapse recording to automatically switch to a higher quality and frame rate during a panic recording situation.



■ Self-diagnosis (temperature monitoring)

The self-diagnosis function based on the S.M.A.R.T. protocol (self-monitoring analysis and reporting technology) ensures the SISTORE AX is even more fail-safe. If a malfunction of the hard drive occurs or a specified temperature limit value is exceeded, SISTORE AX automatically triggers an alarm or sends a message. The callback function allows the unit to connect to the remote client using an existing network or dial-up and to report the problem, therefore allowing the operator to take corrective measures.

Highlights

- Detailed information via connection to transaction devices
- Configurable administration rights
- "Panic button" for a better support of security personnel

Technical overview

	SISTORE AX4 Lite	SISTORE AX8/AX16 250/100	SISTORE AX8/AX16 500/200
			
Display			
Video inputs (loop-trough)	4	8/16	8/16
Monitor outputs	1 x Main monitor	1 x Main monitor, 1 x Spot	1 x Main monitor, 4 x Spot
Audio inputs/outputs			4/1
Freeze/zoom image	■	■	■
Live display formats	1 (full screen), 2 x 2 (quad)	1 (full screen), Picture-in-Picture (PiP), 2 x 2 (quad), 3 x 3 (nono), 4 x 4 (hex)	1 (full screen), Picture-in-Picture (PiP), 2 x 2 (quad), 3 x 3 (nono), 4 x 4 (hex)
Covert camera mode	■	■	■
Recording			
Maximum recording speed – no local playback	100 ips	100 ips	200 ips
Maximum recording speed – during local playback	100 ips	25 ips	200 ips
Maximum recording speed – playback via RAS software	100 ips	100 ips	200 ips
Panic button (recording)	■	■	■
Triplex mode	■		■
Alarms			
Alarm inputs and outputs	4 and 2	8/16 and 2/2	8/16 and 2/2
Video loss detection	■	■	■
Activity detection	192 zones	192 zones	256 zones
Internal buzzer	■	■	■
Alarm log	■	■	■
Watchdog alarm (system/hard drive)	■	■	■
S.M.A.R.T. self-diagnosis	■	■	■
Operation			
PTZ/dome control	■	■	■
Fast forward/rewind control	3 speed levels adjustable	3 speed levels adjustable	3 speed levels adjustable
Password protection	Customisable, 64 user groups, 256 users per group	Customisable, 64 user groups, 256 users per group	Customisable, 64 user groups, 256 users per group
Remote keyboard control	■	■	■
Infrared remote control or mouse	■	Mouse	■
Web browser access	■	■	■
Connection options			
Ethernet LAN/WAN (10/100 Mbps)	■	■	■
Remote control via RAS (licence-free)	■	■	■
Text overlay interface (ATM, POS)	■	■	■
Export/backup			
Export of images via network	Clip-Player, AVI, JPG or BMP	Clip-Player, AVI, JPG, BMP	Clip-Player, AVI, JPG, BMP
Image backup/archive	via USB	via USB/DVD writer (int.)	via USB/SCSI/DVD writer (int.)
Hard disk expansion possibility		■	■

Answers for infrastructure.

■ Megatrends driving the future

The megatrends – demographic change, urbanization, climate change and globalization – are shaping the world today. These have an unprecedented impact on our lives and on vital sectors of our economy.

■ Innovative technologies to answer the associated toughest questions

Throughout a 160-year history of proven research and engineering talent, with more than 50,000 active patents, Siemens has continuously provided its customers with innovations in the areas of healthcare, energy, industry and infrastructure – globally and locally.

■ Increase productivity and efficiency through complete building life cycle management

Building Technologies offers intelligent integrated solutions for industry, commercial and residential buildings and public infrastructure. Over the entire facility's life cycle, our comprehensive and environmentally conscious portfolio of products, systems, solutions and services in the fields of electrical installation technology, building automation, fire safety and electronic security, ensures the:

- optimum comfort and highest energy efficiency in buildings,
- safety and security for people, processes and assets,
- increased business productivity.



Siemens Switzerland Ltd
Industry Sector
Building Technologies Division
International Headquarters
Gubelstrasse 22
6301 Zug
Switzerland
Tel +41 41 724 24 24

Siemens Pte Ltd
Industry Sector
Building Technologies Division
The Siemens Center
60 MacPherson Road
348615
Singapore
Tel +65 6490 6000

Siemens Ltd
Industry Sector
Building Technologies Division
Units 1006-10
10/F, China Resources Building
26 Harbour Road
Wanchai
Hong Kong
Tel +852 2870 7888

Siemens PLC
Industry Sector
Building Technologies Division
Brecon House
Llantarnam Park
Cwmbran
NP44 3AB
United Kingdom
Tel +44 871 386 0800

The information in this document contains general descriptions of technical options available, which do not always have to be present in individual cases. The required features should therefore be specified in each individual case at the time of closing the contract.

© Siemens Switzerland Ltd • Order no. A24205-A336-B590 • 00903