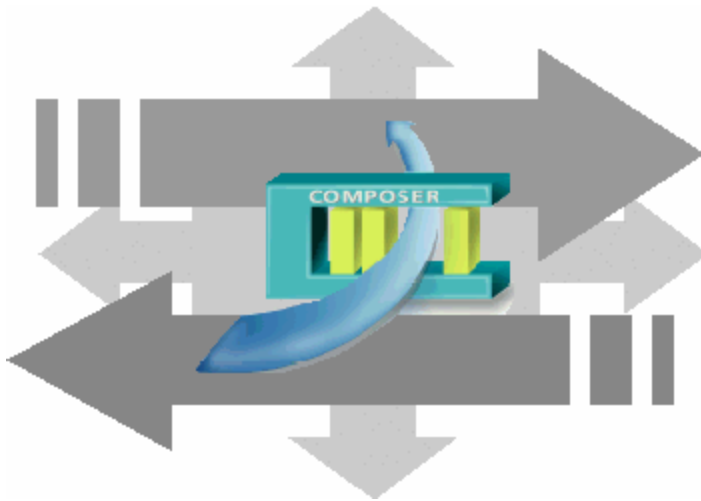


# SIEMENS



**DMS8000 MP4.10**

Connectivity Guide Add-on

- Geutebrück MultiScope DVR

**Building Technologies**

Fire Safety & Security Product

Data and design subject to change without notice. / Supply subject to availability.  
© 2007 Copyright by  
Siemens Building Technologies AG

We reserve all rights in this document and in the subject thereof. By acceptance of the document the recipient acknowledges these rights and undertakes not to publish the document nor the subject thereof in full or in part, nor to make them available to any third party without our prior express written authorization, nor to use it for any purpose other than for which it was delivered to him.

# Table of contents

|   |           |
|---|-----------|
| <b>About this document.....</b>                               | <b>2</b>  |
| <b>Definitions of terms.....</b>                              | <b>5</b>  |
| <b>1 Introduction .....</b>                                   | <b>6</b>  |
| <b>2 Configuring CCTV network .....</b>                       | <b>7</b>  |
| <b>2.1 Video integration .....</b>                            | <b>7</b>  |
| <b>2.2 Video Network Manager .....</b>                        | <b>7</b>  |
| 2.2.1 Video Drivers.....                                      | 8         |
| <b>2.3 CCTV components .....</b>                              | <b>8</b>  |
| <b>2.4 Geutebrück MultiScope (MSC) DVR configuration.....</b> | <b>10</b> |
| 2.4.1 Configuration checklist.....                            | 10        |
| 2.4.2 Configuration procedure .....                           | 11        |

# About this document

---

## Purpose of this document

This manual is a guide to the configuration procedures for the integration of Geutebrück Video systems in MM8000 management stations. It is specifically for those individuals responsible for the commissioning of the management station, such as technical project managers, engineers, and commissioning personnel.

This guide is part of the general DMS8000 documentation set which includes the Composer Technical Manual, the DMS8000 Network, Fire and Intrusion Connectivity Guide, the DMS8000 Access Control Connectivity Guides, and the Installation, Configuration and Commissioning manual for each specific product.

## Target audience

Individuals performing the operations described in this manual are expected to have prior expertise and training in the field of security, at least a moderate level of familiarity with the Siemens Building Technologies product line, and experience with the installation, configuration, and commissioning of security management systems.

## Related training

Siemens Fire & Security Products offers a comprehensive training program. You can find information about courses in the Siemens Intranet at the following address: <http://intranet.sbt.siemens.com/fs>. Choose "Our Offering" in the option list at the left of the screen; links to training material are available on the lower right of the screen.

## Operational and safety regulations



---

Before beginning work on the DMS8000 systems, you must have read and understood the related documents, in particular the Safety Regulations.

---

## Liability disclaimer for damage or injuries

Before products are delivered, they are tested to ensure they function correctly when used properly. Siemens disclaims all liability for damage or injuries caused by the incorrect application of the instructions, or the disregard of danger advisories. This disclaimer applies in particular to personal injuries or damage caused by:

- Improper and/or incorrect use.
- Disregard of safety instructions in the documentation or on the product.
- Poor maintenance or a lack of maintenance.

We have taken every possible care in preparing this manual. The contents of this manual are revised regularly and brought up to latest standards. Nevertheless, we are unable to provide any guarantee with regard to content, entirety or quality of the details contained in this manual.


We assume no liability for problems resulting from the use of this manual. The information contained in this document may be changed without prior notice. We reserve the right to publicize any such changes by issuing updated versions or new editions.

## Reference documents

The most recently released documentation for customers can be found in the STEP Documentation Repository System released at SBT FS for end-users via the STEP Web Client interface at the following address:

[https://intranet.sbt.siemens.com/dbcom/en/db\\_porta/client.asp](https://intranet.sbt.siemens.com/dbcom/en/db_porta/client.asp)

The following describes one way to search and find a document:

1. Click on the "STEP WEB Client" image: 
2. Choose "04 Fire -3F" from the "Product Segment" box and select "Activate filter".
3. Select "All" in the Documents section of the Quick Search page and select "Advanced Search".
4. Enter the document number in the "Brochure No." field (e.g. A6V10062415 or 007121) and press "Enter".

**Hint:** For a specific version, specify the Market Package as \*MPn.nn\* in the "Classification No." field (e.g. \*MP4.10\*).

**Note:** STEP provides no results when the number of found objects is equal to or greater than 200.

→ To learn about other ways to locate a document, see DMS8000 Quick Reference Guidelines for Search and Finding DMS Documents in STEP (A6V10064704).

| Product and Document Name   |   | Document no.  | Date    | Last upd. |
|-----------------------------|---|---------------|---------|-----------|
| <b>Sales documents</b>      |   |               |         |           |
| <b>MM8000</b>               |   |               |         |           |
| 023                         | Product Datasheet                                   | A6V10062415_a | 06.2007 | MP4.10    |
| 053                         | System Description                                  | A6V10062417_a | 06.2007 | MP4.10    |
| 039                         | Sales Presentation                                  | A6V10062423_a | 06.2007 | MP4.10    |
| 074                         | Sales Guide   | A6V10062427_a | 06.2007 | MP4.10    |
| 074                         | Tender Specifications                               | A6V10062419_a | 06.2007 | MP4.10    |
| 074                         | Offer Template                                      | A6V10062429_a | 06.2007 | MP4.10    |
| <b>Technical documents</b>  |   |               |         |           |
| <b>MM8000</b>               |   |               |         |           |
| 073                         | Release Notes MP4.10                                | A6V10062455_a | 06.2007 | MP4.10    |
| 073                         | Release Notes MP3.20-03                             | A6V10075048_a | 07.2007 | MP3.20-03 |
| 073                         | Release Notes MP3.20-02                             | A6V10067812_a | 05.2007 | MP3.20-02 |
| 029                         | Operation   | A6V10062409_a | 06.2007 | MP4.10    |
| 022                         | Operation Quick Reference                           | A6V10067779_a | 06.2007 | MP4.10    |
| 048                         | Installation, Configuration and Commissioning (ICC) | A6V10062413_a | 06.2007 | MP4.10    |
| 022                         | Configuration Quick Reference                       | A6V10075052_a | 06.2007 | MP4.10    |
| 019                         | Localisation - Engineering guide                    | A6V10062459_a | 06.2007 | MP4.10    |
| <b>DMS8000 and Composer</b> |   |               |         |           |
| 023                         | Composer Datasheet                                  | A6V10062403_a | 06.2007 | MP4.10    |
| 054                         | Composer Technical Manual                           | A6V10062401_a | 06.2007 | MP4.10    |
| 022                         | Composer Config. Quick Reference                    | A6V10067783_a | 06.2007 | MP4.10    |

|     |   |               |         |        |
|-----|---|---------------|---------|--------|
| 048 | Network, Fire, and Intrusion Connectivity Guide | A6V10062425_a | 06.2007 | MP4.10 |
| 048 | Access Control Connectivity                     | A6V10062451_a | 06.2007 | MP4.10 |
| 048 | Video Connectivity add-on Geutebrück            | A6V10062457_a | 06.2007 | MP4.10 |
| 048 | Video Connectivity                              | A6V10062457_a | 06.2007 | MP4.10 |
| 048 | Video Connectivity add-on Geutebrück            | A6V10067796_a | 06.2007 | MP4.10 |
| 048 | OPC Connectivity                                | A6V10065253_a | 06.2007 | MP4.10 |
| 048 | Graphical Map Configuration                     | A6V10062441_a | 06.2007 | MP4.10 |
| 022 | Graphical Map Configuration Quick Reference     | A6V10069550_a | 06.2007 | MP4.10 |
| 016 | Migration from DMS7000                          | A6V10062443_a | 06.2007 | MP4.10 |

### Standard symbols

|                |   |
|----------------|---|
| <i>Italics</i> | Result  |
| „“             | Quotation, reproduced identically                     |
| →              | Cross reference                                       |
| (...)          | Brackets contain supplementary text, suggestions etc. |

### Modification index

| Version          | Date    | Notes                           |
|------------------|---------|---------------------------------|
| A6V10067796_a_en | 06.2007 | Corresponds with DMS8000 MP4.10 |
| 009425_b_en      | 06.2006 | Corresponds with DMS8000 MP3.20 |

# Definitions of terms

---

|                      |  |
|----------------------|--|
| <b>Control unit</b>  | <p>The physical panel (for example, CS11 fire subsystems) that is connected to a group of detectors. The control unit receives messages from and sends commands to the detectors. When a control panel is connected to a DMS, it behaves as a translator between the detectors and the DMS. It receives commands from the DMS, and communicates them to the detectors, and it receives messages from the detectors and communicates them to the DMS.</p> <p>The DMS8000 systems support different types of control units in the disciplines of fire and intrusion. Each type of control unit has a different set of terms to describe the hierarchical levels of the organisational structure it uses. At the lowest level are the detectors, which are organised into groups. These groups are organised into larger groups, and so on.</p> |
| <b>Data Point</b>    | <p>The software representation of any item whose state can be changed. Changes of state can occur on subsystems, groups of subsystems, sections, zones, and detectors.</p>   |
| <b>DMS</b>           | <p>Danger Management System. The term DMS is commonly referenced in two contexts.</p> <p>The first, 'DMS8000', refers to the Siemens family of Danger Management System products, which includes the MM8000, MK8000, MT8000 management stations and terminals, as well as the connectivity and configuration solutions, CDI-Net, NK8000 (formerly CDI-WAN) and Composer. DMS8000 refers to the complete system, including subsystems, networks and management stations / terminals.</p> <p>The second, 'DMS', refers to the management stations / terminals in the DMS8000 family. Those are the MK8000, MM8000 and MT8001. When using this manual, reference is made to the 'DMS'. This means the specific product that you are currently configuring.</p>  |
| <b>Dome camera</b>   | <p>The dome camera is named for its dome shape. These cameras are mounted on the ceiling or on a wall in both indoor and outdoor video applications.</p>   |
| <b>Internal user</b> | <p>In order to exchange data messages between tasks, DMS8000 systems require a Windows user account that is used as an identifier to get the necessary permissions from the Windows operating system. By default, this user is called "MM8000_PROC" or "MK8000_PROC". This default setting can be changed if, during the software setup, you select the "Restricted Security option and fill out the fields for the account name and password.</p> <p>It is very important not to change the data associated to this user in the Windows user list. Modifying the information of the internal user will prevent the MM8000 or MK8000 tasks from working properly and require a complete re-installation.</p>   |
| <b>Metafile</b>      | <p>A configuration file that is generated by the configuration tool of a corresponding control unit. It contains all the details of the local configuration (all the objects handled by a particular control unit). The information in this file can be read by and integrated into the DMS8000 internal database (import procedures), ensuring accuracy, and saving configuration time.</p>   |
| <b>Operator</b>      | <p>The person responsible for treating events using the management station. The operator is usually either a member of the security force, or the fire brigade.</p>  |
| <b>PAK</b>           | <p>Product activation key: a 16-character code, associated to a hardware key (dongle) that enables DMS8000 software to run and to perform.</p>   |
| <b>Plant</b>         | <p>The physical location being protected by the security detectors and controlled with the DMS. Synonyms are: facility, site, building, area, etc.</p>   |
| <b>Plug-In</b>       | <p>A subsystem tool used during the configuration process in Composer. Plug-ins are included in a folder on the CD-ROM that comes with the MM8000/MK8000 product. Once they have been imported into Composer, they are represented as icons.</p>   |
| <b>PTZ camera</b>    | <p>A motorised video camera that can support a remote control for positioning (Pan/Tilt) and lens adjustment (Zoom).</p>   |
| <b>Subsystem</b>     | <p>A control unit configured in the Composer environment.</p>  |

# 1 Introduction

---

This is a guide to the software configuration procedures for the Geutebrück MultiScope Digital Video Recorder (DVR) in the MM8000 Management Station and MK8000 OPC server.

For a complete guide to the configuration process, this manual should be used with the DMS8000 Network, Fire and Intrusion Guide, and with the Installation, Configuration and Commissioning manual (ICC) of the specific product.

## **Video devices software version**

The exact software version to use in the video device to integrate into the DMS8000 systems is indicated in the latest MM8000 or MK8000 Release Notes.

## 1.1 Software requirements

---

The **Geutebrück Multiview** application is required for running MM8000 with Geutebrück MultiScope. This application should be installed before MM8000.

### **Geutebrück settings utilities**

The DMS8000 directory:

<installation folder>\Utilities\Reg  
(usually C:\Program Files\Utilities\Reg )

contains the following registry-setting scripts:

- Geutebrueck - Set Multiview User connection routing.reg  
Enable Multiview application for all Windows users.
- Geutebrueck - Multiview without MM8000.reg  
Set Multiview application for stand-alone use (upon starting up, MM8000 reduces to minimum, i.e. to the sole screen image, the application window).



## 2 Configuring CCTV network

### 2.1 Video integration

The DMS8000 systems MM8000 and MK8000 can support the connection to Geutebrück MultiScope Digital Video Recorder (DVR) in the following way:

- Integration of video network, made up of the following devices:

| Manufact.  | Model              | Device type                  |
|------------|--------------------|------------------------------|
| Geutebrück | MultiScope II Plus | Digital Video Recorder (DVR) |
| Geutebrück | MultiScope III     | Digital Video Recorder (DVR) |

This integration allows providing advanced control capabilities as well as the access to video images in MM8000 event treatment and navigation.

A detailed configuration guide for this video device is provided in this section.

### 2.2 Video Network Manager

The advanced video functionalities require a basic communication infrastructure between MM8000/MK8000 and the CCTV units; this is actually a LAN network.

In Composer, a Video Network Manager and the associated drivers should be added to the MM8000/MK8000 main station in order to support the video network communication. The drivers concern the SISTORE, the TELSCAN, and the MultiScope units.

The Fig 1 illustrates how to add the VNM to the configuration:

1. In the MM8000 physical configuration, select the main station name:

'Supervisor System Settings → MM8000 System → Physical configuration → <Station name>'.

In the MK8000 project, the selection is quite similar:

'MK8000 System → MK8000 → Physical configuration → <Station name>'.

2. Click the button A to add the VNM (see Fig 1).

*A new node is added. No further configuration is required for the VNM.*

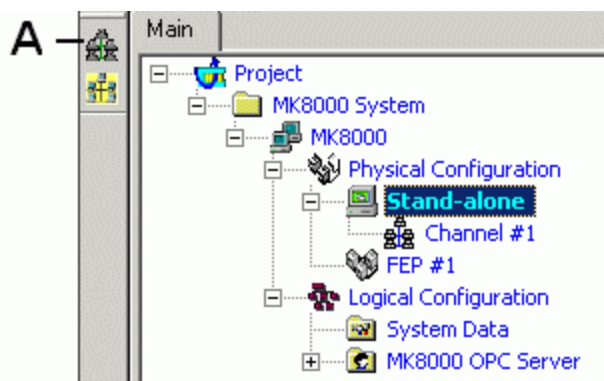


Fig 1 Adding the Video Network Manager (A)

**Note:** Adding the VNM results in the entire Composer project being expanded in order to support the CCTV functions. Particularly, the new tab 'Camera Extensor' is added to all nodes. Depending on the size of the configuration tree, the operation may take a few minutes.

The Composer plug-in #251701 is required.

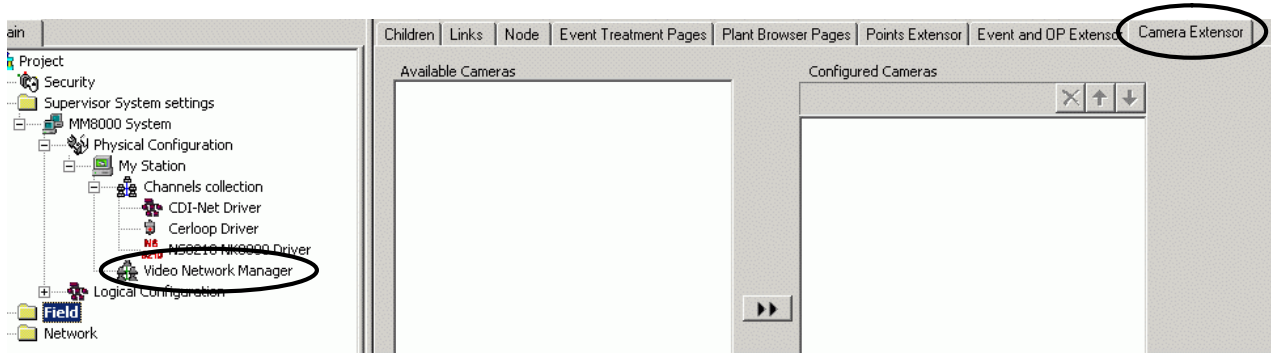


Fig 2 New tab added by the VNM in the MM8000 project

## 2.2.1 Video Drivers

The VNM can support the drivers required to handle the network communication with:

- Geutebrück MultiScope (OPC driver)

Depending on the specific configuration required, add one or both drivers to your project. Proceed as follows:

1. Select the VNM node.
2. In the toolbar, click the icon corresponding to the driver you need (Fig 3):

C – Geutebrück MultiScope (OPC driver)

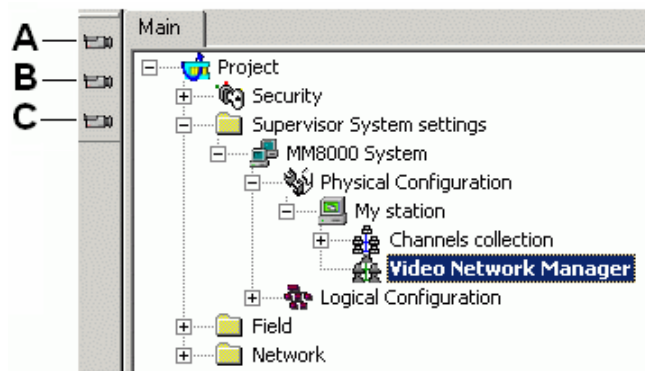


Fig 3 Video drivers

- A Select this icon to add the SISTORE driver
- B Select this icon to add the TELSCAN driver
- C Select this icon to add the OPC client driver (Geutebrück MultiScope)

## 2.3 CCTV components

If the VNM is present, the Video menu of the Composer button bar on the left hand side includes an additional icon, corresponding to the following CCTV component:

- Geutebrück MultiScope Digital Video Recorder (DVR)

The following Fig 4 illustrates the menu options and the corresponding CCTV components.

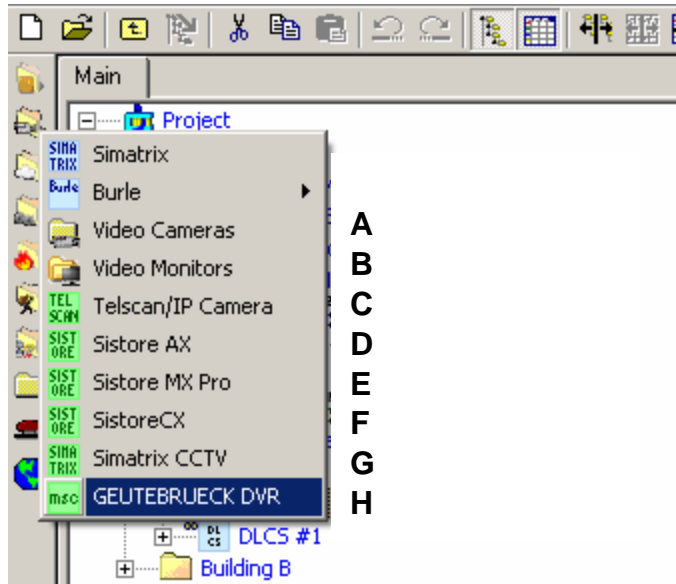


Fig 4 CCTV components menu

- A Select this icon to add a Camera folder
- B Select this icon to add a Monitor folder
- C Select this icon to add a TELSCAN Video Web Server
- D Select this icon to add a SISTORE AX Digital Video Recorder (DVR)
- E Select this icon to add a SISTORE MX and MX Pro Digital Video Recorder (DVR)
- F Select this icon to add a SISTORE CX and SX Digital Video Recorder (DVR)
- G Select this icon to add a SIMATRIX switching crossbar
- H Select this icon to add a Geutebrück MultiScope (MSC) Digital Video Recorder

## 2.4 Geutebrück MultiScope (MSC) DVR configuration

---

The Geutebrück MultiScope (MSC) is a family of Digital Video Recorders capable of acquiring the video signals from 4, 8, 16 or 32 cameras, showing the images on a local monitor, and storing them in digital form on local hard disks.

- Options are also available for video outputs and input/output management
- The host connection is based on a TCP/IP connection on a LAN network

Two basic MultiScope models and a total of 12 variants can be configured in the MM8000 Video Network. Namely:

- MultiScope II Plus, handling 4, 8, 2x4 dual-speed, 16, 4x4 quad-speed, and 32 video inputs.
- MultiScope III, supporting 4, 8, 2x4 dual-speed, 16, 4x4 quad-speed, and 32 video inputs.

MSC models and variants only differ on the number of cameras, and their configuration in Composer is exactly the same (as illustrated in this section).



In the Geutebrück MultiScope DVRs, MM8000 only supports the video and monitoring functions related to camera inputs.

---



In case of network-distributed solutions, be aware that DCOM security must be configured in order to enable the correct communication over the network.

In general, the MM8000 internal user (→ see MM8000 Installation, Configuration, and Commissioning manual) must be recognised by the server (i.e. defined locally on the server computer or at domain level) and granted the DCOM permissions for the Video server process (DCOMCNFG settings).

Also, the computer running MM8000 should be configured in order to grant access the user of the video server.

---

### 2.4.1 Configuration checklist

---

Verify that you have satisfied the items needed in the first checklist before proceeding to the configuration procedure that follows.

#### ITEMS NEEDED FOR CONFIGURATION

- The MultiScope model and variant, i.e. the number of video inputs
- The MultiScope parameter settings, including:
  - Local address (0 to 99)
  - IP address
- The camera connections
- Video application required for integrating Geutebrück MultiScope:
  - Geutebrück Multiview
- Plug-ins needed:
  - Plug-ins #252101 (ST DV SIVMS / ST VD OPC) and 353801 (OPCDVRST / OPC DVR ST), which must be installed before you can configure your system

## 2.4.2 Configuration procedure

The following are the configuration procedures for a MultiScope unit:

### Adding the required Composer Plug-ins

1. Start the Subsystem Plug-in Installer, in the Windows Start menu, launch the program:  
Start → Programs → DMS8000 → Tools → Subsystem Plug-in Installer  
*The Installer tool starts up and shows a dual-pane window.*
2. In the right pane, select “Browser” and locate the Plug-in folder (see Fig 5).  
This is a subfolder of the DMS8000 software, normally installed in “C:\Program files”. However, depending on your national version of Windows and on the options selected during the software installation, this folder may have a different location on your hard disks.

Note that in the DMS800 folder there are 2 subfolders containing Composer Plug-ins; namely:

- ST Plug-ins, which contains tools for MP3.20
- ST Plug-ins NP4.10, which contains tools for MP4.10

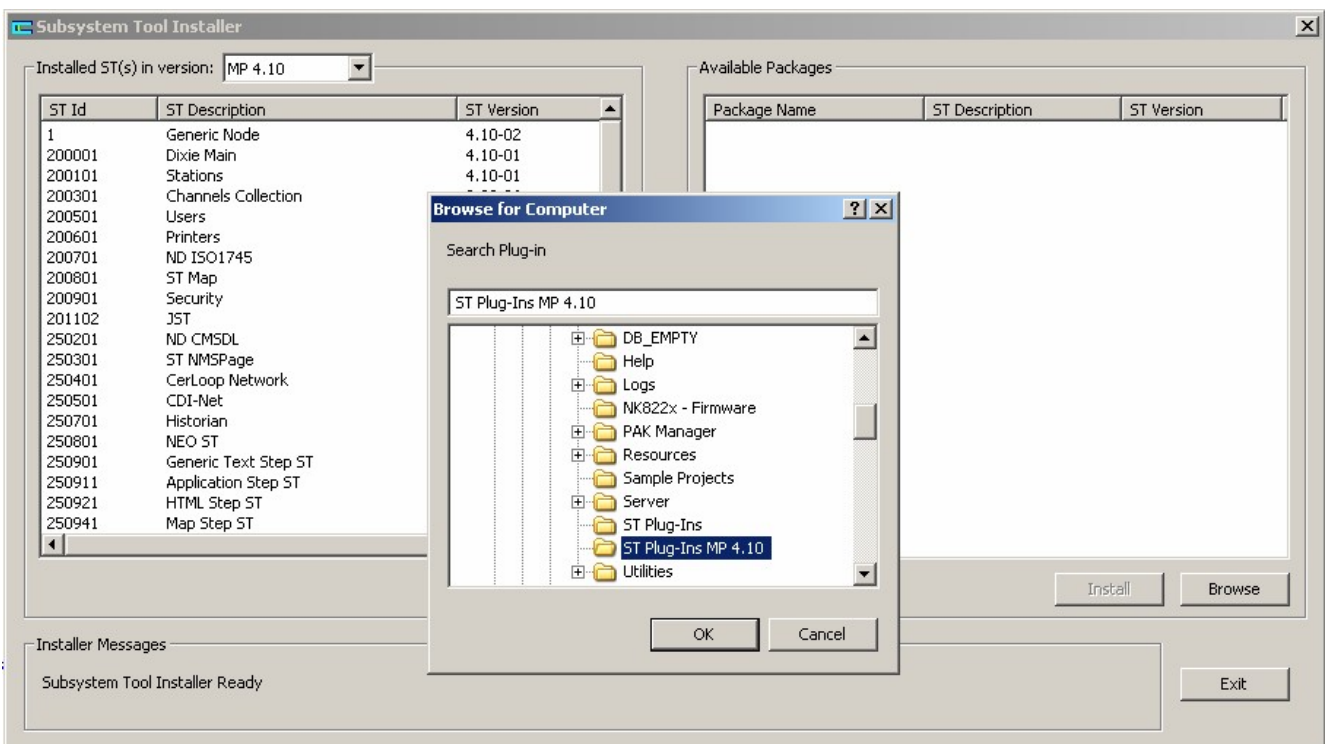


Fig 5 Installing the Composer Plug-ins

3. Click OK and open the Plug-in folder.  
At this point, the pane on the right hand side shows the available packages.
4. Select the following packages:
  - ST VD SIVMS – ST VD OPC (252101)
  - ST OPCDRVST – OPC DRV ST (353801)and click “Install” for each of them.
5. Check the resulting message at the bottom of the Installer window.


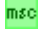
## Adding the Video Network Manager

1. Open the Composer project.
2. If not already done, add the Video Network Manager:  
→ see 2.2 at p.7  
and the MultiScope driver:  
→ see 2.2.1 at p.8.

## Adding the folder for the MultiScope system

- Optionally, create a folder for the MultiScope unit.

## Adding the MultiScope node

1. Select the new folder.
2. Click the Video menu 
3. Select the “Geutebrueck DVR” icon  to add a MultiScope node  
→ see Fig 4 at p. 9.

## Configuring the MultiScope variant and addresses

1. Select new MultiScope node and click the Node tab.

**Note:** By default, the node will be named ‘GEUTEBRUECK DVR #nn’. In the Node tab, you can customise the Description text.

2. Select the model and variant of the DVR (see Fig 6).

By default, the model is set to the first option (4 camera inputs). If necessary, open the drop-down list of the ‘Device Type’ field and select one of the other options. The list includes:

- MSC2+/4, MSC2+/4C, MSC2+/4CI: 4 camera inputs
- MSC2+/8: 8 camera inputs
- MSC2+/16: 16 camera inputs
- MSC2+/32: 32 camera inputs
- MSC2+/2x4: 8 camera inputs (dual speed)
- MSC2+/4x4: 16 camera inputs (quad speed)
- MSC3/4: 4 camera inputs
- MSC3/8: 8 camera inputs
- MSC3/16: 16 camera inputs
- MSC3/32: 32 camera inputs
- MSC3/2x4: 8 camera inputs (dual speed)
- MSC3/4x4: 16 camera inputs (quad speed)



---

The Device Type selection only affects the number of camera inputs that are available in the Composer tree. Note that the device type cannot be set to a smaller model. Be aware that you can safely operate with a configuration larger than the actual device.

---

3. Fill in the address fields (see Fig 6):
  - a. Local address: Enter a value from 0 to 99 according to the actual DVR setting (refer to the MultiScope documentation).
  - b. IP address, which should match the value set in the MultiScope (refer to the MultiScope documentation).

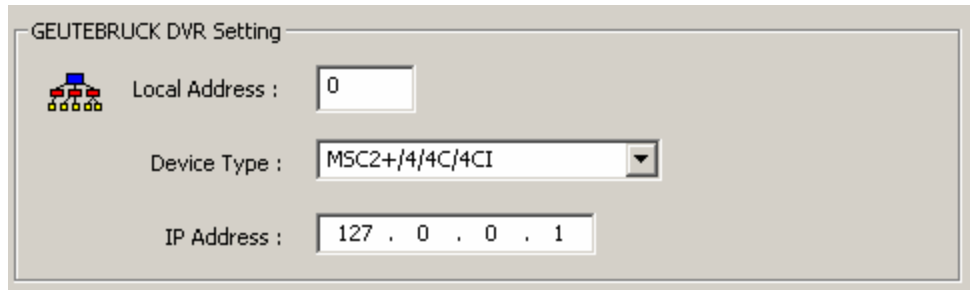


Fig 6 MultiScope DVR settings

### Connecting the cameras

1. Select and expand the MultiScope node.
2. Select and expand the MultiScope Video-in folder.
3. Select and expand the Video Camera folder.
4. Select the video-out node of the camera.
5. Drag and drop the 'video signal' to the MultiScope video-in node (Fig 7).

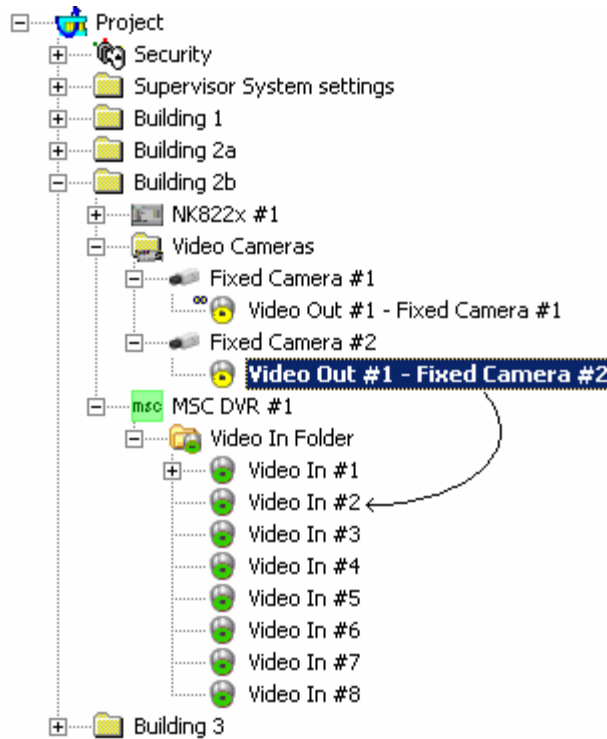


Fig 7 Connecting cameras to MultiScope

Siemens Switzerland Ltd  
Building Technologies Group  
International Headquarters  
Fire Safety & Security Products  
Gubelstrasse 22  
CH-6301 Zug  
Tel +41 41 724 24 24  
Fax +41 41 724 35 22  
[www.sbt.siemens.com](http://www.sbt.siemens.com)