

# SIEMENS



## **MM8000 MP4.10** **Management Station** Product Release Notes

Data and design subject to change without notice. / Supply subject to availability.  
© 2007 Copyright by  
Siemens Switzerland Ltd

We reserve all rights in this document and in the subject thereof. By acceptance of the document the recipient acknowledges these rights and undertakes not to publish the document nor the subject thereof in full or in part, nor to make them available to any third party without our prior express written authorization, nor to use it for any purpose other than for which it was delivered to him.

<b>1</b>	<b>Introduction .....</b>	<b>4</b>
1.1	MP4.10 at a glance .....	4
<b>2</b>	<b>What's new in MP4.10 releases .....</b>	<b>5</b>
2.1	New MP4.10 features.....	5
2.2	Summary of connectivity options .....	8
2.2.1	SiPass .....	10
2.2.2	Video .....	11
<b>3</b>	<b>Installation and configuration procedures .....</b>	<b>12</b>
3.1	Software installation .....	12
3.1.1	New systems: installing MP4.10 .....	12
<b>4</b>	<b>Migrating from older releases.....</b>	<b>14</b>
4.1	Software License.....	14
4.2	Localisation .....	14
4.3	Migrating from MP2.xx .....	14
4.4	Migrating from MP3.xx .....	14
<b>5</b>	<b>Known issues in MP4.10 .....</b>	<b>16</b>
5.1	Installation .....	16
5.2	Configuration.....	18
5.3	Functionality .....	19
<b>6</b>	<b>Documentation .....</b>	<b>24</b>
6.1	MM8000 Sales documentation .....	24
6.2	MM8000 Technical documentation .....	25
<b>7</b>	<b>Customer support links &amp; resources.....</b>	<b>27</b>
7.1	Siemens BT FS .....	27
7.2	Microsoft.....	27
7.2.1	Windows 2000.....	27
7.2.2	Windows XP.....	27
7.3	Adobe Acrobat .....	27

# 1 Introduction

---

The new MM8000 software release MP4.10 is available. These release notes provide the characteristics of the new software, including bug corrections and known issues. We recommend that users carefully read this document before installing and using the software.

## 1.1 MP4.10 at a glance

---

MM8000 MP4.10 includes the following main new features:

- OPC client functions: MM8000 can act as OPC client and connect to OPC servers for communicating to control units via OPC protocol. New integration via OPC for SIMATIC S7 and RCO R-Card M5.
- Integration of DESIGO PX units (for event management only) via BACnet/IP LAN connections.
- Visibility and command permissions associated to user groups have been reorganized and make consistent between treatment and plant browser.
- Composer MP4.10 provides a new toolbar and allows configuring both 3.20 and 4.10 projects.
- DMS7000: a new import command is now available to recreate the DMS7000 tree in Composer automatically.
- Improved support of redundant server configuration with station fault events.
- Transactions (e.g. access control), organization modes, and VB scripts are now supported by reactions and sequences.
- Custom filters: if enabled in Composer, customized event filters can be saved and reused. A default filter can also be set.
- Optional reminders have been added for time program and scheduled tasks.
- NK8000 network:
  - Dial-up option between MM8000 and NK822x units both as backup and as only connection (*this functions is available for field test only*).
  - NK8225 gateways can now support network-wide interactions across multiple NK8225 units.
  - Upload from SI410 Sintony is now also possible via NK882x.
- Video
  - Support for Motion Detection events from SISTORE CX
  - Support for 'External Viewers' in the Plant Browser for Video and other types of subsystems.
- Other improvements in Graphics, Plant browser, History application, and Event management.
- Support for new release of Microsoft SQL Server software; namely: SQL Server 2005 and SQL Server 2005 Express (see installation notes on page 16).
- New Installer menu with simpler and clearer commands.
- Bug corrections as in MP3.20-03.

---

### License information:

A set of 4.10 PAK codes is required for running MM8000 MP4.10.



**Very Important:** There are an increasing number of Service Keys that are considered no longer valid (lost, faulty or not renewed after BY2005). These Service Keys have been added to a “**Black List**” and will not work with MP4.10 Composer software. They must be replaced with a new key.

---

## 2 What's new in MP4.10 releases

---

This section presents the enhancements provided in the new MM8000 software compared with previous MP4.10.

### 2.1 New MP4.10 features

---

#### OPC client functions

DMS8000 used to provide an OPC server option (MK8000). OPC client functions are now available for connecting to OPC servers and communicating with control units via OPC protocol. Both a "light" and a "full" integration is possible. "Light" integration comes for free with the standard product, and requires a more careful engineering than typical MM8000 subsystems but no software code development.

Instead, "full" option needs a specific development effort, a dedicated Subsystem Tool for Composer, for delivering max. user benefits.

SIMATIC S7 (in the standard package) and RCO R-Card M5 (available as Add-on) are examples of the "full" OPC integration.

- For more information about S7 integration, refer to the OPC Connectivity Configuration Guide, doc.no. A6V10065253\_a\_en.
- The R-Card M5 is discussed in the corresponding Add-on manual, doc.no. A6V10064742\_a\_en.

#### Integration of DESIGO PX units

DESIGO PX units can be connected to MM8000 using a LAN connection based on BACnet/IP. All types of DESIGO PX are supported, but only via LAN. The NS8011 BACnet driver is used (note that LON-based PXs need a LAN adapter).

The EDE files (text file, CSV extension) generated by PX configuration tool can be imported into Composer.

The support of DESIGO PX is limited to the following types of information:

- Binary multi-state objects, with acknowledgement and activate/deactivate commands.
- Analog objects (threshold alarms only).

Other objects will not be visible in MM8000.

#### Visibility and command permissions associated to user groups

In Composer, the object visibility and command permissions associated to user groups have been better organized in multiple tabs.

#### New toolbar and multiple data-version management in Composer

Composer MP4.10 includes a new and compact toolbar that groups the control units by discipline.

Also, multiple project versions can be handled (3.20 and 4.10 so far) with no need of upgrading the project. Note that Composer MP4.10 can download 4.10 projects, whereas 3.20 projects can be loaded, modified, saved and then moved to the actual 3.20 installation PC for performing the download.

#### DMS7000 tree import

In the Composer geographic node, an import command is available to recreate the DMS7000 tree automatically.

Note that CZ10 / CZ12 subsystems must be imported before the tree in order to enable Composer to get the appropriate links to the new structure.

In case only part of the control units have been created and imported, the tree import creates the entire structure anyway, and links only the existing and imported CZ10 / CZ12 units and points.

### **Redundant server configuration**

In comparison with 3.20-xx, the physical PCs, identified as "license stations" and can provide a station fault event when one of the physical machines is down.

### **Transactions and VB scripts in reactions and sequences**

Transactions can now be included in reaction triggers and in sequence programs. When occurring (instantaneously), the transaction is evaluated during a programmable period of time (Transaction time) that allows other conditions (e.g. alarm states or other transactions) to happen and be tested along with the transaction. Organization modes can be included in triggers + effects of reactions and in sequence programs.

VBScript are now supported in reaction and sequences. A simple text editor is integrated. Also, a new VB method has been added for reading MM8000 information.

### **Customised event filters**

If enabled in Composer, customised event filters can be defined in the MM8000 event treatment. Filters can be saved and then reused with simple commands. A default custom filter can also be set.

### **Reminders for time program and scheduled tasks**

A window message (on all clients)/e-mail/SMS can be generated (possibly more than once) before a time program executes.

### **Dial-up connectivity between MM8000 and NK822x units**

Dial-up works with CEI protocol (not compatible with network-wide interactions).

Modem objects are inserted in the Composer tree. Modem parameters include local phone no., AT commands codes, supervision frequency, tone (default) or pulse mode. Modems are then linked to NS8210 modem folder and to one of the NK8000 serial lines. COM port, baud rate, and other parameters are set in the link nodes.

In the link node of NK8000 modem, the calling phone numbers are entered: max. 5 numbers, used in the sequence until the connection is established.



---

Currently, the dial-up connectivity has been released for field test only. Please contact support to be informed about the tests in progress.

---

### **NK8225 network-wide interactions**

In the interaction folder of NK8225 gateways you can link, and then use in the interaction programs, objects belonging to the supported subsystems (see list below) connected to both the same gateway (local interactions) and other NK8225 gateways (network-wide interactions) in the same project.

The following subsystems are supported for both local and network -wide interactions:

- CS11 AlgoRex EP5 and EP7
- FC700
- CS6 Quarto
- SI410/420 Sintony
- SIGMASYS
- CF9000 I/O
- STT20

- STT2410
- Philips/Burle video switcher
- Local NK8000 I/O (DF8000 modules)
- MK7022 Cerloop interface

Note that network-wide interactions are only possible between subsystems connected to NK8225 (NK8222 and NK8223 can only support local interactions).

#### **SI410/420 Sintony upload via NK882x**

Configuration upload from SI410/420 Sintony used to be available only via a direct serial link to the control unit. This is now possible also through the NK882x connection line.

#### **Motion Detection (MD) events from SISTORE CX**

MD should be consistently configured in CX Config and MM8000 Composer (motion and sabotage detection in the CX camera nodes).

Cameras supporting MD provides MD alarm events as well as inclusion/exclusion of alarm and sabotage. Note that alarms are generated on the camera point (no longer on video-in points).

#### **External Viewers support in Plant Browser (PB)**

This feature allows integrating a foreign application as PB viewer with a simple configuration in Composer. It can support both an HTML active component and a Windows application (EXE with parameters).

Note that this is NOT a subsystem integration, as it just includes data viewing capability in PB (video, images, etc.). No alarm/fault events and no configuration support (e.g., association camera to points) can be provided.

#### **Miscellaneous improvements**

- Graphics: thicker frame of selected points in maps; centred zooming
- Video configuration: simplified setting of cameras' coverage area
- Plant browser: the screen layout can be saved for easy personal settings
- History application: a new column in the reports indicates the event "source location", which can be different from the "event location" in case of geographical tree
- Event management: event filters are now available also in case of automatic event treatment. Note that limitations to the filter may apply in order to follow the automatic treatment policy: e.g. the first event in the list may not be filtered out.

#### **Bug corrections**

MP4.10 includes the bug corrections provided with MP3.20-03.

## 2.2 Summary of connectivity options

Network	Notes	Further info. in DMS8000 documentation
Direct serial links: - CS11 AlgoRex© (via CK1142) - FC700A (via FG700A) - SI410 Sintony™ - CC1115 / FC330A		Network, Fire & Intrusion Connectivity Guide: A6V10062425_a_en
LAN links: - Siemens CCTV: SISTORE, TELSCAN, IP Cameras - Geutebrück MultiScope - SiPass Access control - DESIGO PX	- DESIGO PX via BACnet/IP	Network, Fire & Intrusion Connectivity Guide: A6V10062425_a_en
- Cerloop	-	Network, Fire & Intrusion Connectivity Guide: A6V10062425_a_en
- CDI-Net - NK8000 via serial link	-	Network, Fire & Intrusion Connectivity Guide: A6V10062425_a_en
NK8000 LAN: - NK8222 - NK8223 - NK8225	- Dial-up connectivity - Network-wide interactions - NK8225 BACnet gateway <sup>(1)</sup> - NK8000 MP4.10 firmware	Network, Fire & Intrusion Connectivity Guide: A6V10062425_a_en NK8000 Installation, Configuration & Commissioning: A6V10062437_a_en
OPC links: - SIMATIC S7 - RCO R-Card M5	- SIMATIC S7 - RCO R-Card M5	

Tab.1 Network options

Peripheral equipment	Notes	Further info. in DMS8000 documentation
- MT8001	Not available for MP4.10 networks Use NK8000 MP3.15.	MT8001 Installation, Configuration & Commissioning: 006647_e_en
SMS service over GMS: - Siemens Modem M20 - Siemens Modem MC35	-	MM8000 Installation, Configuration & Commissioning: A6V10062413_a_en
E-mail/SMS service over e-mail: - POP3 service provider	-	MM8000 Installation, Configuration & Commissioning: A6V10062413_a_en
Paging system: - ESPA 4.4.4 system	ASCOM, Novalink, & Telepage systems have been tested	

Tab.2 Peripheral equipment and services

<sup>1)</sup> Tests with DESIGO INSIGHT are still in progress.  
 Availability of integrated DESIGO+MM8000 solutions (TBS, Total Building Solution) to be announced.



Control units	Notes	Further info. in DMS8000 documentation
- CS11 AlgoRex® EP5 and EP7 - FC700A	EP7F Z2.1 (V7.8x)	Network, Fire & Intrusion Connectivity Guide: A6V10062425_a_en
- CS1115 Phase 4 - FC330A Phase 4	CISxx8.85	Network, Fire & Intrusion Connectivity Guide: A6V10062425_a_en
- SIGMASYS (field test only) - D100 (field test only)	SIGMASYS V40-2 D100 V3.5	Network, Fire & Intrusion Connectivity Guide: A6V10062425_a_en
- STT2410 / STT11 - STT20	STT2410 and STT20 via NK822x	Network, Fire & Intrusion Connectivity Guide: A6V10062425_a_en
- CZ10 / CC60 / CZ12 - CS4 / CS440		Network, Fire & Intrusion Connectivity Guide: A6V10062425_a_en
- CS6 Guarato™ MP3, MP3+		Network, Fire & Intrusion Connectivity Guide: A6V10062425_a_en
- SI410/420 Sintony™	Firmware F8-05 or later	Network, Fire & Intrusion Connectivity Guide: A6V10062425_a_en
- DMS7000 units: MM/MF-7033 etc.		Network, Fire & Intrusion Connectivity Guide: A6V10062425_a_en
- SIPASS™	V2.35 Build 31	AC Connectivity Guide: A6V10062451_a_en
- SIMATRIX 164; 648; SYS, - SIMATRIX NEO	All versions, as long as supporting CDDL-CDSF protocol (also indicated as "LMS protocol")	Video Connectivity Guide: A6V10062457_a_en
- SISTORE AX / MX / MX Pro - SISTORE CX /SX		Video Connectivity Guide: A6V10062457_a_en
- TELSCAN		Video Connectivity Guide: A6V10062457_a_en
- Stand-alone IP cameras		Video Connectivity Guide: A6V10062457_a_en
- CF9000 I/O subsystem (DF8020/8040/8045/8046)		Network, Fire & Intrusion Connectivity Guide: A6V10062425_a_en
- Geutebrück CCTV MultiScope™ II Plus and III	Manual installation of Composer plug-in	Geutebrück CCTV Add-on manual: A6V10067796_a_en
- Philips/Burle CCTV (LTC 8x00)		Video Connectivity Guide: A6V10062457_a_en
- DLCS door control system (via WinCC OPC server)	Manual installation of Composer plug-in	DLCS Add-on manual: A6V10067792_a_en
- Autronica BSxxx	Add-on package is re- quired	Autronica BS Add-on manual 008750_b_en
- LIST SCU 2000 (field test only)	Add-on package is re- quired	LIST Add-on manual 009248_a_en
- MAXSYS PC6010	Add-on package is re- quired	MAXSYS Add-on manual 008751_b_en
- CP100	Add-on package is re- quired	CP100 Add-on manual 009848_a_en
- MODBUS-based subsystems (field test only)	Add-on package is re- quired	MODBUS Add-on manual A6V10067800_a_en
- CDDL/CDSF-based subsystems (field test only)	Add-on package is re- quired	CDDL/CDSF Add-on manual A6V10067787_a_en

Tab.3 Subsystem equipment and services

## 2.2.1 SiPass

The following table shows the compatibility between MM8000 and SiPass versions:

<b>Compatibility matrix:</b>	<b>MM8000</b>		<b>SiPass 2.2</b>	<b>SiPass 2.3</b> Build 18	<b>SiPass 2.3</b> Build 21	<b>SiPass 2.35</b> Build 31	<b>SiPass 2.35</b> Build 38
	<b>MP3.15</b>	Yes	No	No	No	No	No
	<b>MP3.15-01</b>	No	Yes	No	No	No	No
	<b>MP3.15-02</b>	No	No	Contact support (*)	No	No	No
	<b>MP3.20</b>	No	No	Yes	No	No	No
	<b>MP3.20-01/-02/-03</b>	No	No	No	Yes	Yes	Yes
	<b>MP4.10</b>	No	No	No	Yes	Yes	Yes

The following table shows the characteristics of the integrated solutions:

#	Description	MM 3.15 + SiPass 2.2	3.15.01/02 + SiPass 2.3	3.20 + SiPass 2.3	3.20-xx/4.10 SiPass 2.35
1	MM8000 replaces the SiPass related event management	Yes	Yes	Yes	Yes
2	AC users & permissions in SiPass software launched by MM8000	Yes	Yes	Yes	Yes
3	Door statuses available in MM8000 text pages and graphic maps: Door Alarm (unique event for Door Forced or Held) ..... Door Forced ..... Door Held ..... Door Locked / Unlocked ..... Output Active / Inactive ..... Input/Output Tamper ..... Device Faults (except for Readers) ..... Duress alarm ..... Pass-back input Tamper/Status (REX button) ..... Reader Fault and Tamper .....	Yes No No Yes Yes Yes Yes No No No	No Yes Yes Yes Yes Yes Yes Yes Yes Yes	No Yes Yes Yes Yes Yes Yes Yes Yes Yes	No Yes Yes Yes Yes Yes Yes Yes Yes Yes
4	Control commands available in MM8000 text pages and graphics: Door Lock / Unlock (propagated on the geographical tree) ..... Allow Access ..... Output Activate / Deactivate .....	Yes Yes Yes	Yes Yes Yes	Yes Yes Yes	Yes Yes Yes
5	Support for ACC controllers..... Support for CC30 CerPass controllers.....	Yes No	Yes Contact support (*)	Yes Yes	Yes Yes
6	Store events & security-relevant AC transactions in MM8000 history database. The transaction list includes: Access Denied (Zone Violation and Hardware Anti-pass back) ..... Access Granted (not tracked by default) .....	Yes Yes	Yes Yes	Yes Yes	Yes Yes
7	Limit in number of devices configured in FLN lines .....	32	253	253	253
8	SiPass transactions can be used to trigger MM8000 reactions .....	No	No	No	No
9	<b>Support for BLN and IS bus objects</b> .....	n/a	No	<b>Yes</b>	<b>Yes</b>
10	<b>Support for FLN3a and FLN3b bus objects</b> .....	n/a	No	<b>Yes</b>	<b>Yes</b>
11	<b>Multiple SiPass systems connected to the same MM8000</b>	No	No	<b>No</b>	<b>Yes</b>

**Note:**

(\*) Feasibility should be technically verified by customer support

→ See Access Control Connectivity Guide no.A6V10062451\_a\_en.

## 2.2.2 Video

SISTORE CX/SX Digital Video Recorders are now supported: please refer to the compatibility matrix provided below and to the known issues described on page 22.

Video device model	Video device version / type	MM8000 Version
SISTORE AX	V2.40	MP3.15, 3.15-01/-02, 3.20, 3.20-01/-02/-03, 4.10
	V2.50	MP3.15, 3.15-01/-02, 3.20, 3.20-01/-02/-03, 4.10
	V2.60 (recommended)	MP3.15, 3.15-01/-02, 3.20, 3.20-01/-02/-03, 4.10
	V3.1	MP3.20-01/-02/-03, 4.10
SISTORE MX (including NVR)	V2.55, V2.57, V2.58 (recommended)	MP3.15-02, 3.20, 3.20-01/-02/-03, 4.10
SISTORE MX Pro	V2.45	MP3.10, 3.15, 3.15-01/-02, 3.20, 3.20-01/-02/-03, 4.10
	V2.50	MP3.15, 3.15-01/-02, 3.20, 3.20-01/-02/-03, 4.10
SISTORE CX	V3.00, V3.01	MP3.20
	V3.1	MP3.20-01/-02/-03, 4.10
	V3.2	MP4.10
SISTORE SX	V3.00, V3.01	MP3.20
	V3.1	MP3.20-01/-02/-03, 4.10
	V3.2	MP4.10
TELSCAN	V2.00	<i>Not supported</i>
	V2.03A	MP3.15, 3.15-01/-02, 3.20, 3.20-01/-02/-03, 4.10
	V2.10	MP3.15-01/-02, 3.20, 3.20-01/-02/-03, 4.10
Siemens IP cameras:  → directly on LAN and mapped as single-line TELSCAN .....   → via SISTORE MX .....	Fixed IP cameras with: CCIS 1337-LP, CFVA-IP, CVVA-IP ....	MP3.15-01/-02, 3.20, 3.20-01/-02/-03, 4.10
	Any IP camera compatible with SISTORE MX .....	MP3.20, 3.20-01/-02/-03, 4.10
Geutebrück MSC	V5.0 (3.613)	MP3.20, 3.20-01/-02/-03, 4.10

→ See Video Connectivity Guide no. A6V10062457\_a\_en.

## 3 Installation and configuration procedures

### 3.1 Software installation

---

MM8000 MP4.10 is distributed with a complete and assisted setup procedure.

For detailed information about the installation procedure, refer to the MM8000 ICC manual (document no. A6V10062413\_a\_en).

#### 3.1.1 New systems: installing MP4.10

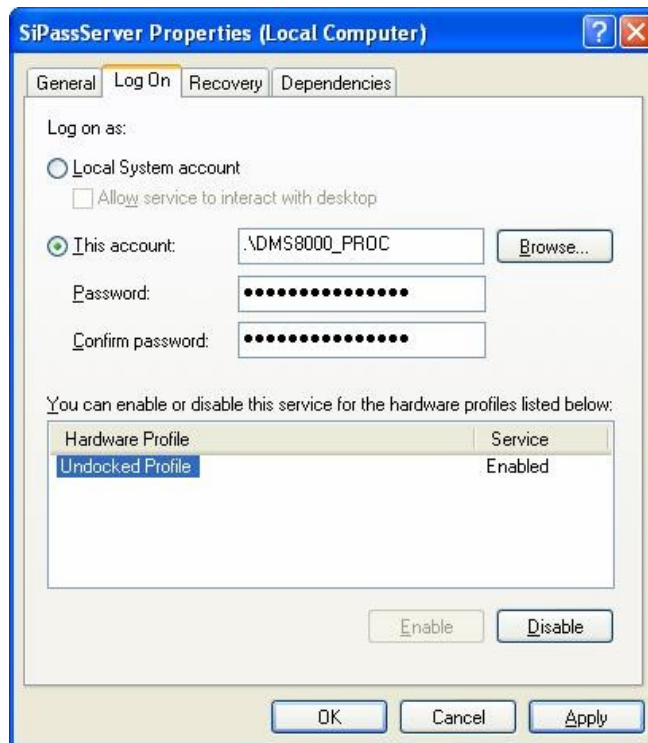
---

Assuming a stand-alone MM8000 station, the MP4.10 installation procedure includes the following steps:

1. Check system requirements. Note the typical required software:
  - If required, the SiPass application software should be installed before MM8000, on the same PC or on another machine in the network. If a previous SiPass version is installed, upgrading to latest software is mandatory before installing MM8000. In this case, **we recommend** uninstalling SiPass and then installing it again.
  - A local or networked SQL server or SQL Data Engine (MSDE 2000 or SQL Server Express 2005). Note that SiPass includes the SQL Data Engine software (MSDE 2000), which can be perfectly used by MM8000 as well. Also, be informed that, at the moment, the use of an external SQL server is not supported by SiPass, which requires a local server of its own.
  - Microsoft software **.NET Framework 1.1 and 2.0** as well as **SQLXML 3.0 SP3** are required. All applications are available on the distribution CD and can be installed and used free of any license charge.
  - If required, also install the video application software, according to the specific CCTV device. For detailed instructions, please refer to the related documentation.
  - Other software may be required depending on the specific configuration including NK8000 networks and Alarm Printout services.
    - ➔ Please refer to the MM8000 ICC manual (doc.no. A6V10062413\_a\_en).
2. Log on as Administrator.
3. If an old release of MM8000 is installed (e.g. MP3.10/3.15/3.20), then you need to uninstall it and reboot the PC.
4. At this point, if you need to install SiPass, you also have to remove the SQL server Data Engine previously installed by MM8000, and then delete the corresponding folder, typically C:\Program Files\Microsoft SQL Server. Failing to remove the previous SQL server will result in the SiPass installation not executing properly.
5. Install MM8000 software, which can be: Client, FEP, Stand-alone (Server), Configuration-only (Composer), or License station.
6. During the software setup, you have to select the security mode (standard or restricted), the server tasks start-up mode (automatic or manual), and other installation options.
  - ➔ If you are not familiar with the setup procedure, please read section 4 of the MM8000 ICC manual (doc.no. A6V10062413\_a\_en) before installing the software.
7. Reboot the PC.
8. Install the MP4.10
9. Install the hardware key and enter the license code using the PAK Manager tool. Note that SiPass also requires a license option (Management Station Integration).

**Notes:**

- **Software License:** all previous Composer and MM8000 licenses must be updated to MP4.10.
- **Localisation:** by default, the DMS8000 software is installed in English. The installation procedure can install texts in another language as long as the required language file (LANG\_XXX.ZIP) is included in the setup folder along with the other files (not provided by default). Otherwise, the language may be modified later by means of the 'Language Installation' utility.
  - See MM8000 Localisation Engineering Guide, doc.no. A6V10062459\_a
- Be aware that you first need to **download** the Composer configuration before being able to start the MM8000 application (MM8000 client).
  - See MM8000 ICC manual, doc.no.A6V10062413\_a\_en.
- **If the SiPass server does not run on the same PC as MM8000**, then additional installation steps are required on the networked PC where SiPass is installed:
  - 1) In the Windows user list, the SiPass PC should include the MM8000 *Internal User*, by default 'DMS8000-Proc'. Use the same username and password as on the MM8000 PC.
    - Refer to MM8000 ICC Manual (doc.no.A6V10062413\_a\_en).
  - 2) In the SiPass Server Properties, modify the Logon option in order to use the MM8000 *Internal User* as Logon account (see picture).



## 4 Migrating from older releases

### 4.1 Software License

---

All previous Composer and MM8000 licenses must be updated to MP4.10.

Also, note that Service Keys whose contract expired in 2006 or earlier will not work with MP4.10 software. Those keys can no longer be used and need to be replaced by new service keys to be obtained opening new Composer contracts through standard sales channels.

### 4.2 Localisation

---

Referring to the localised versions, be informed that the language file (ZIP) must be updated using the MP4.10 localisation toolkit, which is new in comparison with all previous versions.

### 4.3 Migrating from MP2.xx

---

The configuration database migration from MP2 releases - namely MP2.10, MP2.20, MP2.21, and MP2.30 - is possible using MM8000 MP2.31 and MP3.15 as intermediate conversion steps; see documents MM8000 MP2.31 Release Notes (008091\_a\_en) and MM8000 MP3.15 Release Notes (008901\_a\_en).

### 4.4 Migrating from MP3.xx

---

The migration from MP3 releases (MP3.10-xx, MP3.15-xx, and MP3.20-xx) is possible as described in this section. You perform the following steps:

1. Make sure you have a backup copy of your MM8000 project (Composer backup, runtime scheduler task definitions).
2. Uninstall previous version and reboot.
3. If still present, delete the 'C:\MM8000' folder.
4. Install the new MM8000 software as described in section 3.1.  
Do not forget to check the related hardware and software requirements.
5. Start Composer and restore your project
6. Open the project (note that the opening process may take quite a few minutes).
7. In the MM8000 structure tree, select:  
Supervision System Settings → MM8000 System → Logical Configuration → User Data
8. On the Node tab, press the button labelled "Project Update".  
The update procedure will start and may present a message window that informs you about forced modifications in the projects. A detailed log is provided in <installation folder>\Logs\NEOUPDATE.LOG.
9. The update procedure will take some minutes, depending on the size of the project. Please wait for the procedure to complete.
10. *[Database 3.15-xx and earlier only, not required for 3.20]* In the MM8000 structure tree, select:  
Supervision System Settings → MM8000 System → Logical Configuration → User Data → Graphic Maps  
On the Node tab, press the button labelled "Map Update" and wait for the graphic map update procedure to complete.

**11.** [Database 3.15-01 and earlier only, else see below] If SiPass is used, the SiPass node in the Composer tree must be deleted and then created again (note that the deletion will force you to reconfigure the access control points in maps, reactions, sequences, etc.).

[Database 3.15-02 and later] If SiPass is used, the access control configuration alignment is required.

After restoring a previous SiPass configuration, it is necessary to add a new user to the list of authorised operators for SiPass. The user data must be:

- Username: SiPassUser
- Password: SiPassPassword

After restoring a previous SiPass configuration, it is necessary to add a new user to the list of authorised operators for SiPass. The user data must be:

- Username: SiPassUser
- Password: SiPassPassword

It is essential to execute a SiPass database alignment before downloading a project that includes a SiPass access control system.

You can either connect to the SiPass application and then align the database (on-line mode) or import the XML database created with MP4.10 export tool.

The alignment is also necessary (typically in off-line mode) in case the SiPass unit is simulated for test/demo purposes.

- Refer to the Access Control Connectivity Guide (A6V10062451\_a\_en).



**12.** [Database 3.1x and 3.20 (if not already done)] Update Journaling Services.

Select: Supervision System Settings → MM8000 System → Logical Configuration → System Data

Check the “Journaling Service” node: if a journaling printer is configured, note down what template is used.

Then, delete the “Journaling Service” node and then inserted again from the menu in order to install the latest Composer component for this function.

If a journaling printer is used in your configuration, link the printer to the journaling to the template you took note about before deleting.

**13.** Download the new project.

**14.** If used, download the NK822x units with the latest firmware as well as the configuration data.

- Refer to the NK8000 chapter in the DMS8000 Network Connectivity Guide (A6V10062425\_a\_en).

**15.** Close Composer.

**16.** Run MM8000 and restore the runtime scheduler task definitions.

## 5 Known issues in MP4.10

---

This is a list of known limitations, problems, bugs and recommended practises at the time this software was released. Compared with previous Release Notes, new and updated points are marked by a side label for easier identification.

### 5.1 Installation

---

#### **MS Windows Vista**

Vista is not supported, yet. For new systems, use Windows XP:

#### **MSDE or SQL server**

MM8000 requires SQL server 2000 or 2005. The free-of charge database “engine” package from Microsoft is sufficient: you can use both MSDE 2000 (MS SQL server Desktop Engine) and SQL Server Express 2005..

MS SQL Server If SiPass is installed and integrated with MM8000, then the MSDE installed by SiPass can also be used for MM8000.

**Note:** The SiPass setup does not accept the MSDE copy installed by MM8000 as valid.

If you have installed MM8000 before SiPass, then proceed as follows:

- Uninstall MM8000 and reboot
- Uninstall MSDE 2000 and reboot
- Delete the MSDE folder, typically C:\Program Files\Microsoft SQL Server
- Install SiPass
- Re-install MM8000

#### **SQL security**

MSDE 2000 has a security weakness (the empty ‘sa’ password) that can be fixed by setting your SQL password with a special command available in:

<installation folder>\Utilities\Bat\SetSQLServerPassword.bat

Run this batch file adding your password as parameter (copy and paste the command line into the ‘Start → Run’ line, then enter the password and click ‘OK’).

**Note:** You can also edit this file and replace the “%1” field with your own password. Then save the file with another name (the original is read-only) and run it. Keep the new file in a safe place in case you need to refer to the new SQL password.

If MSDE has been installed along with SiPass, please follow the SiPass documentation concerning this issue.

#### **Troubles with the hardware key**

If after the installation the PAK manager cannot recognise the HW key, the sentinel drivers need to be installed manually. In this case launch the set-up located in:

<installation folder>\PAK Manager\Sentinel Drivers\SSD5411-32bit

and follow the instructions; when prompted, select the default installation.

#### **Cannot change domain/PC name**

MM8000 does not support a domain/PC name change on the Client or Server after the installation. The solution is to uninstall MM8000, rename the PC, reboot, and then install the software again.

→ See also MM8000 ICC manual (A6V10062413\_a\_en).

#### **Printer spooler**

MM8000 requires the printer spooler to be enabled for the configured printers.



**Clear History DB**

Rare cases of difficulties in the history functions have been reported after installation. In such cases, the FS-DMS support may recommend the use of the program:

<installation folder>\Utilities\ToolsUtilities\EngineeringTools.exe

This can clear (and optionally also resize) the database and solve the problem.

**Video applications**

Video applications require specific software (viewers and other utilities) to be installed before MM8000.

→ Please check requirements in MM8000 ICC manual (A6V10062413\_a\_en)

Windows Server 2003 may not be supported by all SISTORE video applications; please check the latest SISTORE documentation

**Alarm printout**

The alarm printout application, when used on Windows 2000, requires an additional Microsoft software to be installed (Internet Explorer 6). Please check software requirements in MM8000 ICC manual (A6V10062413\_a\_en).

**Windows XP**

MM8000 can run on Windows XP SP2. However, depending on the firewall options, the use of this operating system may require special settings. Please check software requirements in MM8000 ICC manual (A6V10062413\_a\_en).

**Windows NT 4.0 domain server**

As documented in the ICC manual, MM8000 stations can work in a Windows network controlled by a domain server based on Windows 2000 or 2003 server.

In case the server runs on NT 4.0 operating system, MM8000 can still be used, but only in restricted-security mode, manually managing the user list in the NT 4.0 domain server. In other words, MM8000 must first be installed in restricted mode (on Windows 2000 or XP networked stations) and then MM8000 operators must be defined on the domain server as Windows users before being created and downloaded from Composer.

→ For more details about security modes, please refer to the ICC manual (A6V10062413\_a\_en), section 4.2.

**Problems with Windows patch KB902400**

In some restricted-security environments (typically within a domain), if the DCOM access has been manually limited to the Administrator group, this Windows patch may affect the DCOM settings and remove some Administrators' permissions. This results in the MM8000 software being prevented from running properly.

In case of major problems in running the MM8000 after the KB902400 patch, make sure that, in the DCOM Security setting, the Administrators group is actually enabled for all the "Access permissions".

Note that this problem does not affect the MM8000 standard security setting.

**Pak Manager and 3rd-party PAK codes**

Pak Manager shows the 3rd Party PAK codes only if the related Add-on is installed. Instead, if the additional software is not present, the related PAK does not appear in the list. Note also that, if you install the Add-on package after the PAK configuration, you need to re-insert the PAK's in the Pak Manager to get the correct license. Additionally, this implies to restart the MM8000 servers.

## 5.2 Configuration

---

### Download failures

Repetitive download attempts may cause failures. In this case, close Composer after each download and then reopen it. Also try the 'Empty\_DB' procedure (see <installation folder>\Utilities\ToolsUtilities\EngineeringTools.exe).

### Opening MM8000 MP3.15 projects

When opening a large (e.g.: 13,000 or more Composer nodes) MP3.15 project in Composer for the first time, please allow up to 50 minutes.

### Opening MK8000 MP3.18 projects

Currently, MK8000 3.18 projects must be reconfigured in Composer; restore is not supported.

### Graphic tool: best practises for bit-map files:

Convert BMP files to JPG (photos) or to GIF (schemas). This will improve the performance considerably.

### Graphic tool: names of graphic maps

In Composer, names of graphic maps should never be longer than 50 characters.

### Graphic tool: problem filtering AutoCad layers in metric maps

If used for metric maps, the AutoCad importing wizard erroneously notifies a problem when the "CAD selection → Layer" window is selected. The following message is displayed: "Error loading file <filename>" and the AutoCAD file is apparently not imported. Actually, if you then close and re-open the map, the AutoCAD image is shown properly, as it is present in the map in spite of the error message.

### Graphic tool: adding CAD fonts

Additional CAD fonts can be manually added in the folder:

<installation folder>\Resources\CADfonts (e.g. C:\MM8000\ Resources\CADfonts)

If not already existing, the 'CADfonts' subfolder must be created.

### DMS7000 metafile for CZ10 and CZ12

If a subsequent import is required, then the control unit name should be the same as the original name or the import will not work.

### Cannot use USB service key and old parallel keys at the same time

In certain cases, two license keys can be used on the same machine to enable MM8000 and tools separately. Be aware that the old generation of keys (larger in size, see the following picture) will not work properly when the USB key is also installed.

In such cases, you need to remove the USB dongle (i.e. the service key used for enabling Composer) when you need the MM8000 to recognise the parallel key.

### CC11 AlgoRex EP7

The following structures are imported in the logical and not in the physical tree:

- 1551 - Digital output;
- 1552 - Digital output supervised;
- 1560 - Internal horn;
- 1561, 1564, 1565 - External horn;
- 1562 attribute = RTFIRE – "Alarm" remote transmission channel;
- 1562 attribute = RTFAULT – "Fault" remote transmission channel;
- 1562 attribute = RTOTHER – "Other" remote transmission channel.

**“Move” function in AlgoRex tool**

The AlgoWorks “move” function, which allows CC11 objects to be moved in the tree structure, **is not fully supported in MM8000 tools** (ref. defect #5521). In fact, the import procedure can treat this case correctly when the moved objects maintain the same parent node (e.g. Zone is moved from the last position to the first position within the same Section).

Instead, moving objects and changing the parent node (e.g. Zone is moved from Section 1 to Section 2) is not supported. The import operates by deleting and re-creating the object in the MM8000 structure. Note that this results in the previous links of the moved object being lost, e.g. a fire zone will disappear from its map or its reaction. You then have to reconfigure the object in maps and reactions, etc.

**Lock/Unlock MM8000 stations**

Before locking the MM8000 station in closed mode, please read carefully the ‘Activating the MM8000 closed mode’ chapter of the ICC manual (doc. no. A6V10064742\_a\_en).

**STT20**

STT20 metafile needs to be re-imported after restoring an MP 3.15 projects, else the download may fail.

**Composer BACKUP**

The Backup file (Compressed BAK file) does not include HTML pages, Address Book, Composer templates

## 5.3 Functionality

---

**FEP stations require server when starting up**

Distributed configurations including FEP stations: When you start up a FEP station, you must ensure that the MM8000 server is already up and running.

**Low virtual memory events**

Depending on the specific configuration and on the PC hardware characteristics, MM8000 software may use up the memory resources in Windows and cause the “Low virtual memory” error message to display. Should that occur, you can **adjust the virtual memory size** (i.e. the size of the *paging* file where Windows swaps the active memory areas on disk). Using the Administrator login, proceed as follows:

- Start → Settings → Control Panel → System → Advanced tab → Performance Options → Virtual memory “change” button.
- At this point, in the disk drive list that appears, select the Windows 2000 System disk drive (typically C:) and set the size values as follows:

	Client / FEP	Stand-alone / Server
Initial size	1024 MB	2048 MB and more <sup>(2)</sup>
Maximum size	4096 MB	4096 MB

**Screen savers**

<sup>2</sup> Initial size may be extended up to 3000 MB in case low memory events still occur.

Please abide by the following guidelines if you wish to use a Screen saver while running MM8000:

- Use only standard Windows Screen savers;
- Do not configure password protection for Screen savers.

Standard Windows Screen savers allow for the Event icon area and the Summary bar to be present while the Screen saver occupies the Work area. Failure to comply with the guidelines listed above may result in problems with the MM8000 system.

### **Acrobat writer/distiller**

Installing MM8000 typically affects the behaviour of the Acrobat Writer/Distiller, which will not work properly any more, even uninstalling MM8000.

### **M35 GSM modem and character set in SMS messages**

In SMS notification messages, the M35 modem (ref. M35 manual “MC35\_ATC\_01\_V05.00”) is configured to support the GSM 03.38 (7-bit) alphabet set, which includes a minimum set of characters.

In most cases, message texts in Western languages are adapted to the GSM set, whereas other languages (e.g. Russian, Chinese, Hebrew, etc.) are not supported (note that texts including invalid characters are discarded by the modem and the related message is lost).

In general, we recommend using plain ASCII characters in SMS messages. However, the customisation of some special characters is possible in the localisation procedure. Please refer to MM8000 Localisation Engineering Guide, document no. A6V10062459\_a\_en.

### **Event dispatching**

In Windows XP, the dispatching steps of operating procedures do not work properly if the Windows Address Book or Outlook Express is open while MM8000 operates. Ensure that these applications are closed.

### **Removing history full events**

In case the SQL history archive is automatically backed up, the MM8000 events related to archive full condition are no longer necessary to notify the operator. In such cases, we recommend setting ‘out of scan’ the History node of the Station in the MM8000 Physical Structure.

### **SiPass**

#### **– Reader name, FLN name and structure**

This information cannot be acquired from SiPass; this prevents MM8000 from representing the entire physical structure of the devices.

#### **– Object states and events**

The following information is not transmitted to MM8000:

- Door Block and Door Open (frame contact)
- ACC Tamper, Power Fault, and Battery Operation
- Area and Elevator objects are not visible at all
- Soft Anti-pass back

#### **– Access Denied events are not transmitted to MM8000 in case of:**

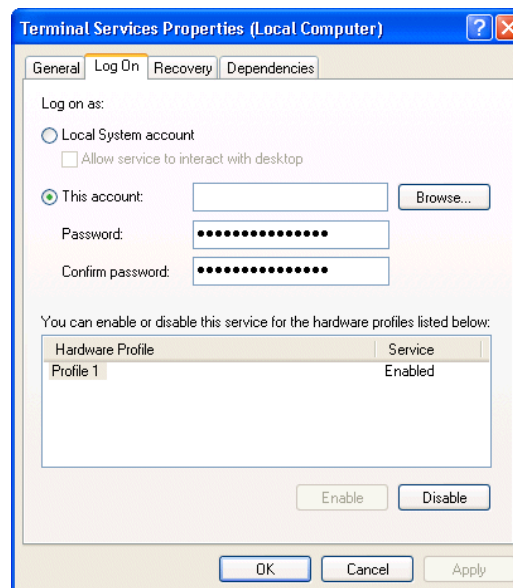
- Card not yet active
- Time schedule violation
- Expired card
- Void card
- Wrong PIN
- Access with Daily code

- The use of SiPass **Alarm Classes** with MM8000 is affected by some limitations. Please refer to the SiPass chapter in the DMS8000 Access Control Connectivity Guide (doc.no. A6V10062451\_a\_en).
- The SiPass **functions which are also available in MM8000** - e.g. event notification (message forwarding in SiPass), reactions and sequences (event tasks in SiPass) - should be clearly assigned to either of the two systems, according to specific requirements, thus preventing any functional overlap.

### Remote SiPass server (Windows XP only)

If the SiPass server is installed on a remote PC, the "Log On" properties must be changed on the remote PC so that the SiPass server can communicate with MM8000. Perform the following steps:

1. Log on to the PC with the SiPass server.
2. Right-click on 'My Computer' and select 'System Tools → Local User and Groups → Users'.
3. Add the new user 'DMS8000\_PROC' and assign administrator rights (for detailed instructions, please refer to standard Windows documentation).
4. Right-click on 'My Computer' and select 'Services and Applications → Services'.
5. Double-click on the SiPass service and select the 'Log On' tab.



6. Select the 'This Account' button and then select 'Browse'.
7. In the 'Select User' window, select the 'Advanced' button.
8. Select 'Find Now' and select DMS8000\_PROC.
9. Restart the PC.

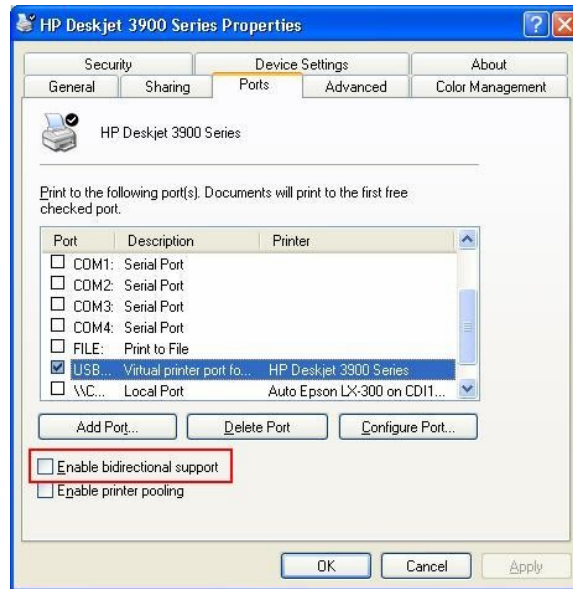
From MM8000, select 'Change Server' in the Composer Properties Management window, and select the SiPass server to connect.

### USB Printers

If a USB printer reports a fault condition in MM8000, try to remove the Bidirectional Control option in the printer properties page. Please follow this procedure:

1. Open the USB printer properties window (see picture below).
2. Select the "Ports" tab.

3. Uncheck the option "Enable bidirectional support".
4. Cancel all pending jobs in the spooler (most of them will be named "Check"). If you are not able to delete them, reboot the PC and make sure that the spooler list is empty.
5. Retry MM8000 printouts.



### SISTORE AX

Note that SISTORE AX can support only one client at the time. When one MM8000 station is connected to the video unit to show video images, no other station can connect at the same time.

### SISTORE MX

In general, we recommend that you use SISTORE MX V2.58 or upgrade to this version. Depending on the version installed, the following difficulties may be encountered:

1. The SISTORE MX 2.55 must be used with the remote player of SISTORE MX 2.57 or later.
2. The archive player shows the control buttons (e.g. Play, Stop, Rewind, etc.) on the very right of the screen and therefore they are not visible most of the time.  
**Note:** The Replay Toolbar (WC1) in SISTORE MX 2.57 player shows up together with the timeline on the left, thus covering the timeline; the actual replay toolbar containing recorded video controls is located on the right and is not visible. In SISTORE Remote Viewer 2.45 and 2.50 you could only see this part of the toolbar (without the timeline).
3. Recording with Pre-trigger (e.g. Automatic recording in case of an event) is not possible.  
**Note:** In order to work with MM8000, SISTORE MXPro 2.45 and 2.50 requires the "Enable Software trigger" checkbox to be checked in the configuration. Instead, with SISTORE MX 2.55 and 2.57, the "Long time recording" schedule also has to be enabled to work-around a defect in the communication with MM8000. Unfortunately, this solution prevents the pre-trigger function from working.
4. Stopping the recording is not possible from the MM8000 (Recording is only stopped when the configured delay expires in SISTORE).

**DESIGO PX**

When an event occurs from DESIGO PX where the AckRequired flag is active, if the Ack command is not executed on MM8000 and DESIGO PX returns to normal, the Ack command on MM8000 changes to Reset, and the event stays in the event list.

## 6 Documentation

---


All documents were updated to include the new features added in MP4.10. Note the document numbers related to the new STEP numbering.

### STEP documentation repository

On the Siemens intranet, the product documentation can be found in the STEP Documentation Repository. The STEP Web Client interface is available at the following address:

[https://intranet.sbt.siemens.com/dbcom/en/db\\_porta/client.asp](https://intranet.sbt.siemens.com/dbcom/en/db_porta/client.asp)

The following describes one way to search and find a document:

1. Click on the "STEP WEB Client" image: 
2. Choose "04 Fire -3F" from the "Product Segment" box and select "Activate filter".
3. Select "All" in the Documents section of the Quick Search page and select "Advanced Search".
4. Enter the document number in the "Brochure No." field (e.g. A6V10062415 or 007121) and press "Enter".

**Note:** STEP provides no results when the number of found objects is equal to or greater than 200.

- To learn about other ways to locate a document, see DMS8000 Quick Reference Guidelines for Search and Finding DMS Documents in STEP (A6V10064704).



**Note:** MP4.10 documentation is delivered in pdf format only. You can find Word versions of all documentation in the STEP repository.

---

### 6.1 MM8000 Sales documentation

---

#### Product Datasheet (document no. A6V10062415\_a\_en)

A brief summary of the features provided by the MM8000, available architectures, and networks. It also includes information about system limits and subsystems supported.

#### System Description (document no. A6V10062417\_a\_en)

This document is similar to the datasheet, but very much expanded, and more detailed. It describes the MM8000 system and the user interface functionality.

#### Sales Guide (document no. A6V10062427\_a\_en)

This guide presents the most important sales arguments. Also, a FAQ section provides the answer to some typical questions.

#### Sales Presentation (document no. A6V10062423\_a\_en)

This is a PowerPoint presentation provided by the marketing department. It can be modified, or used as is to show potential customers what the MM8000 can do.

#### DMS8000 Application & Planning (document no. A6V10063710\_a\_en)

This document contains a brief discussion of product marketing strategy for all FSP-DMS products, and a moderate level of detail about the architectural configurations supported by MM8000.



**Tender Specifications (document no. A6V10062419\_a\_en)**

This document is currently in the standard Siemens format, but it is designed for use and adaptation(s) by independent contractors responsible for selecting and managing the installation and upgrades of a security system for the final customer.

**Offer Template (document no. A6V10062429\_a\_en)**

This is intended as an aid for sales people in the preparation of initial and final offers.

## 6.2 MM8000 Technical documentation

---

**MM8000 Operation Manual (document no. A6V10062409\_a\_en)**

This manual is an operation guide, meant for end users.

**MM8000 Installation, Configuration and Commissioning (ICC, document no. A6V10062413\_a\_en)**

The ICC guide provides step-by-step procedures for installation and configuration of the MM8000. During configuration, this manual should be used in tandem with the DMS8000 Connectivity Configuration guides.

The installation checklist at the end of the document is intended to be used as an aid in gathering information from the customer prior to beginning configuration.

**DMS8000 Connectivity Configuration Guides:**

- **Network, Fire, and Intrusion (documents no. A6V10062425\_a\_en)**
- **Access Control (document no. A6V10062451\_a\_en)**
- **Video (document no. A6V10062457\_a\_en)**
- **OPC (document no. A6V10065253\_a\_en)**

This set of documents include: the DMS8000 Network Fire and Intrusion Configuration guide, the DMS8000 Access Control Configuration guide, and the DMS8000 Video Configuration guide. The set is shipped with all FSP-DMS products and contains information about installing Composer, connecting and activating the hardware (dongle) key, setting up a new project, and configuring the networks and sub-systems supported by DMS8000 products. This should be used in conjunction with the ICC guide.

**DMS8000 Graphical Map Configuration Guide (document no. A6V10062441\_a\_en)**

This manual described in details the MM8000 graphic editor.

**Composer Technical Manual document no. A6V10062401\_a\_en)**

This guide explains how to use Composer in general. It provides a reference to commands and instructions used during the system configuration. Note that the latest edition of this manual describes the new functions that the MP3.20 version Composer can provide.

**MM8000 Localisation Guidelines (document no. A6V10062459\_a\_en)**

This guide provides assistance with the localisation of the MM8000 MP3.20 software, including information about using the Catalyst tool.

**Maintenance & Troubleshooting**

**Note:** This document is no longer provided. Please refer to the on-line support services (see next section).

**Quick reference guides**

These short guides (4 to 8 pages A5 format) can be used as reference papers for the most typical software functions. The list of available quick guides includes:

- Operation (document no. A6V10067779\_a\_en)
- Installation, Configuration Commissioning (doc.no.008598\_d\_en)
- Graphical maps (document no. 008906\_b\_en)
- Composer Configuration (document no. A6V10067783\_a\_en)

**Release Notes (document no. A6V10062509\_a\_en)**

This document. It includes all information concerning MP4.10.

## 7 Customer support links & resources

### 7.1 Siemens BT FS

---

Our Customer Support Center intranet site at:

<http://intranet10.sbt.siemens.com/divisions/fs/customer+support+center/>

provides useful information and links. In the Online Support section of this intranet page, software downloads and known product issues can be found in the PSP (password-protected Product Support Platform).

→ The support mailbox is: [fs.support.sbt@siemens.com](mailto:fs.support.sbt@siemens.com).

### 7.2 Microsoft

---

General support about Microsoft Windows can be found at:

→ <http://support.microsoft.com/directory/>

#### 7.2.1 Windows 2000

---

Windows 2000 support

→ <http://www.microsoft.com/windows2000/default.mspix>

Security issues

→ <http://www.microsoft.com/technet/security/default.mspix>

#### 7.2.2 Windows XP

---

Technical information, including deployment guides

→ [http://www.microsoft.com/resources/documentation/Windows/XP/all/reskit/en-us/prork\\_overview.asp](http://www.microsoft.com/resources/documentation/Windows/XP/all/reskit/en-us/prork_overview.asp)

Windows XP support

→ <http://www.microsoft.com/windowsxp/support/default.mspix>

Windows XP SP2 - Frequently Asked Questions (FAQs)

→ <http://www.microsoft.com/windowsxp/sp2/default.mspix>

Windows XP SP2 – How to ...

→ <http://www.microsoft.com/windowsxp/sp2/howto/default.mspix>

Security issues

→ <http://www.microsoft.com/technet/security/default.mspix>

### 7.3 Adobe Acrobat

---

To view the PDF document is necessary to install the program Adobe Acrobat Reader. You can find its free version at:

→ <http://www.adobe.com/products/acrobat/readstep.html>

Siemens Switzerland Ltd  
Building Technologies Group  
International Headquarters  
Fire Safety & Security Products  
Gubelstrasse 22  
CH-6301 Zug  
Tel +41 41 724 24 24  
Fax +41 41 724 35 22  
[www.sbt.siemens.com](http://www.sbt.siemens.com)