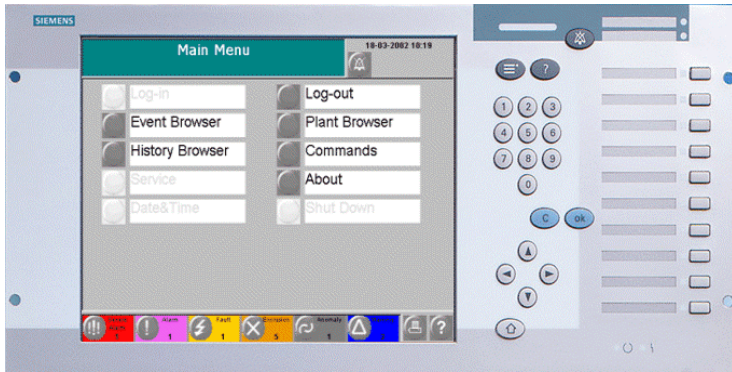


SIEMENS



MT8000 MP1.20

Management Terminal family:

- MT8001
- MT8002

Release notes

Fire & Security Products

Siemens Building Technologies

Data and design subject to change without notice.

Supply subject to availability.

© Copyright by

Siemens Building Technologies AG

We reserve all rights in this document and in the subject thereof. By acceptance of the document the recipient acknowledges these rights and undertakes not to publish the document nor the subject thereof in full or in part, nor to make them available to any third party without our prior express written authorization, nor to use it for any purpose other than for which it was delivered to him.

1	INTRODUCTION	2
2	WHAT'S NEW IN MP1.20.....	3
2.1	MT8002	4
2.2	Approvals	4
2.3	New connectivity	4
	2.3.1 Subsystems supported	4
2.4	Changes to configuration procedure	4
2.5	Changes to functionality and features	5
	2.5.1 User interface.....	5
	2.5.2 Tools	5
	2.5.3 CS11 AlgoRex	5
2.6	Changes to documentation	5
3	MIGRATING FROM PREVIOUS RELEASES	6
3.1	Update procedure from 1.01	6
	3.1.1 Configuration update from 1.01	6
	3.1.2 Flash-Disk update procedure from 1.01	6
3.2	Update procedure from 1.10	7
	3.2.1 Configuration update from 1.10	7
	3.2.2 Flash-Disk update procedure from 1.10	7
4	PROBLEMS & BUGS.....	9
5	LOCALISATION	10
6	DOCUMENTATION	12
6.1	MT8000 Product Binder	12
6.2	Sales documentation.....	12
6.3	Technical documentation	12
	6.3.1 MT8000 documentation	12
7	SUPPORT LINKS & RESOURCES.....	14
7.1	MT8000	14
7.2	Microsoft.....	14
	7.2.1 General support	14
	7.2.2 Microsoft ActiveSync®	14
7.3	Adobe Acrobat.....	14

1 Introduction

This document applies to MT8000 (MT8001 and the new MT8002) MP1.20 and covers the following topics:

- Differences between this release and the last.....p. 3
- Migrating from a previous releasep. 6
- Known problems & bugs.....p. 6
- Documentationp. 11
- Customer Support links and resourcesp. 14

2 What's new in MP1.20

This section details the differences between MT8000 MP1.20 and previous MP1.10.

- New MT8002 terminal p. 4
- Official approval certificates p. 4
- New subsystems supported p. 4
- Changes to Configuration procedure p. 4
- Changes to functionality and features p. 5
- Changes to Documentation..... p. 5

2.1 MT8002

A new MT8002 product is now available. It can provide better performances that can be particularly appreciated in large configurations. Also, MT8002 hardware can run the new Windows CE.Net, which can support the localisation in any European language (non European languages could also be managed, please contact FSP-DMS support for details).

In comparison with MT8001, the new MT8002 provides a simpler panel, with no pushbuttons and LEDs. It does not provide any direct I/O capability. No approvals are foreseen for MT8002.

2.2 Approvals

The approval list of MT8001 includes:

- EN54-2 (VdS) (Germany / Fire)
The certificate of approval has been delivered. EN54-2 (VdS) requirements mainly concern the presentation of events, the test procedure, and the internal software supervision.
- ULC (Canada / Fire)
The certificate of approval has been delivered. ULC requirements also address the presentation of events as well as the fault inputs and the ground fault handling.
- PIZ (Switzerland / Intrusion)
The certificate of approval has been delivered. PIZ required functions are mostly focused on the security aspect of user access procedures.

For each approval, a specific option setting has been included to enable the entire set of required functionalities.

2.3 New connectivity

2.3.1 Subsystems supported

Fire & Gas Subsystems

- CC11 AlgoRex EP7 – **Now fully supported** (see 2.5.2 on page 5)

2.4 Changes to configuration procedure

- To configure the MT8000 MP1.20 you must use Composer version 2.03-01. This version of Composer can also be used to configure MK8000 projects as well. MM8000 however, requires a different setup distributed on the MM8000 CD.

Note: The Composer tools installed together with MM8000 MP2.31 setup cannot be used for downloading MT8001 MP1.20.

- This version does not allow you to download a project created with MP1.01 release (see 3.1.1 on page 6). Instead, MP1.10 projects can be restored, modified and downloaded (see 3.2.1 on page 7).

MP1.20 configurations (if XML-prepared at least once) can be restored and downloaded even without XML preparation. Note that, after any change to the configuration setting, the XML preparation is always required.

- No more conversion is required for CC11 EP7 metafiles, whose import is now fully supported.

2.5 Changes to functionality and features

2.5.1 User interface

The user interface has been slightly re-organised in MP1.20. The general approach has been oriented to make the interface more similar to MM8000, especially for Event list and Property page.

The language is now selected in the Composer configuration (see 006647 MT8000 Installation Configuration & Commissioning)

2.5.2 Tools

In the configuration environment, the XMLdata are now separated for each project and are part of the project backup.

Maps and instruction pages are now included in the project backup.

2.5.3 CS11 AlgoRex

EP7

AlgoRex EP7 can be used with the MT8000 with no limitations.

Note that CS11 EP7 provides two types of metafiles, for CC11 and CK11; both types are imported in the Composer configuration for MT8000 terminals.

➔ See 007083 DMS8000 Network and Subsystem Connectivity guide.

The utility “EP5toEP7.exe” is no longer required.

2.6 Changes to documentation

The document set included with the MT8000 has changed significantly for this version.

EDMS	Document Name	Status
006952	MT8001 Data Sheet	Updated
008079	MT8002 Data Sheet	New
007286	Sales Guide	No changes from 1.10/1.01
007346	Sales Presentation	No changes from 1.10/1.01
007788	Tender Specifications	Updated
007789	Release Notes M1.20	New (this document)
006647	Installation Configuration & Commissioning	Updated
007289	Maintenance & Troubleshooting	Updated
007083	DMS8000 Connectivity Configuration	Updated
006611	MT8001 Operation Manual	Updated
008087	MT8002 Operation Manual	New

3 Migrating from previous releases

3.1 Update procedure from 1.01

3.1.1 Configuration update from 1.01

Composer projects generated in MP1.01 cannot be used with MP1.10. An entire new 1.20 configuration should be entered in the new Composer, reproducing what was done earlier for 1.01.

3.1.2 Flash-Disk update procedure from 1.01

Existing MT8001 1.01 units can be updated to 1.01 to 1.20 following the procedure (use of keyboard required):

1. In Composer, get the new configuration ready.
 2. Get the CD with new firmware files. Note the files and folder structure:
 - \NK.BIN
 - \BOOT.SYS
 - \MT8001\HISTORY\... (History archive)
 - \MT8001\COMMUNICATIONLAYER\... (Data and program files)
 3. Insert the keyboard adapter into your MT8001 and leave it connected for the entire update procedure.
 4. Connect to MT8001 with ActiveSync and shutdown the MT8001 application.
 5. When the shutdown procedure is terminated (WIN CE picture is only visible on the screen), start browsing in the MT8001 files.
 6. In the "Communication layer" folder, delete the file 'NeuronLoader.exe'
 7. In the \MT8001 folder rename the file 'goon.ko' to 'goon.ok'.
 8. Restart MT8001.
 9. When the application is started-up connect again to MT8001 with ActiveSync.
 10. Shutdown the MT8001 application and wait until that the shutdown procedure is terminated.
 11. Browse MT8001: If you do not need the current history archive, proceed as follows:
 - in the "Flash-Disk1" root, delete 'Restore.fdf' and 'NK.bin'
 - delete "MT8001" folder with all its files and subfolders
 - at that point, copy the entire new set of files of new 1.20 firmware into the MT8001
 12. Instead, if you want keep the history data, following these steps:
 - in the "Flash-Disk1" folder, delete 'Restore.fdf' and 'NK.bin'
 - in the folder 'MT8001', delete the folder "CommunicationLayer", only
 - then, copy the new 'NK.bin' file into the root "FlashDisk1"
 - copy the new folder "CommunicationLayer" into "MT8001"
 - Carefully check that the files and folders structure matches the structure reported above and shown in Fig. 1 below (the NK.bin and BOOT.SYS files must be present in the Flash-Disk1 root directory).
 13. Reboot the MT8001 and let the application start-up.
 14. Proceed with the download your configuration to MT8001.
- **Never reboot the MT8001 without the files 'BOOT.SYS' and 'NK.bin', or your terminal will be not able to start up again.**

3.2 Update procedure from 1.10

3.2.1 Configuration update from 1.10

Composer projects generated in MP1.10 can be used with MP1.20.

All new features included in MP1.20 will be automatically managed and the project is automatically updated during the restore phase.

Before download the configuration, the XML-preparation procedure is required.

3.2.2 Flash-Disk update procedure from 1.10

Existing MT8001 1.10 units can be updated to 1.20 following this procedure (use of keyboard is no longer required):

1. In Composer, get the new configuration ready (old 1.10 configuration can be restored and used).
 2. Get the CD with new firmware files. Note the files and folder structure:
 - \NK.BIN
 - \BOOT.SYS
 - \MT8001\HISTORY\... (History archive)
 - \MT8001\COMMUNICATIONLAYER\... (Data and program files)
 3. Restart MT8001.
 4. During the start-up phase a window 'Start ActiveSync' will be displayed. To start the connection click on OK button in the right top corner.
 5. In a short time start the ActiveSync connection from your PC.
 6. When connected browse the MT8001 files.
 7. In the "Communication layer" folder, delete the file 'NeuronLoader.exe'
 8. Restart MT8001.
 9. Connect again the ActiveSync using the window 'Start ActiveSync' displayed during the start-up phase.
 10. When connected, browse the MT8001 files.
 11. If you do not need the current history archive, proceed as follows:
 - in the "Flash-Disk1" root, delete 'Restore.fdf' and 'NK.bin'
 - delete "MT8001" folder with all its files and subfolders
 - at that point, copy the entire new set of files of new 1.20 firmware into the MT8001
 - Carefully check that the files and folders structure matches the structure reported above and shown in Fig. 1 below (the NK.bin and BOOT.SYS files must be present in the Flash-Disk1 root directory).
 12. Instead, if you want keep the history data, follow these steps:
 - in the "Flash-Disk1" folder, delete 'Restore.fdf' and 'NK.bin'
 - in the folder 'MT8001', delete the folder "CommunicationLayer", only
 - then, copy the new file 'NK.bin' into the root "FlashDisk1"
 - copy the new folder "CommunicationLayer" into "MT8001" folder.
 - Carefully check that the files and folders structure matches the structure reported above and shown in Fig. 1 below (the NK.bin and BOOT.SYS files must be present in the Flash-Disk1 root directory).
 13. Reboot the MT8001 and let the application start-up.
 14. Proceed with the download your configuration to MT8001.
- **Never reboot the MT8001 without the files 'BOOT.SYS' and 'NK.bin', or your terminal will be not able to start up again.**

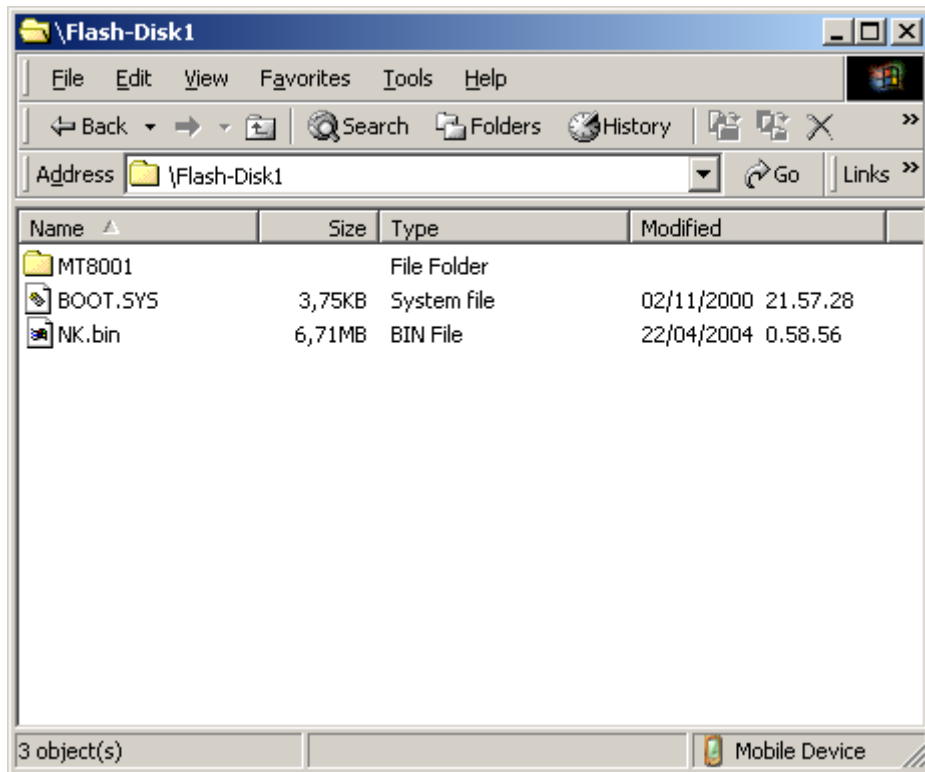


Fig. 1 Flash-Disk1 root directory

4 Problems & bugs

This is a list of known problems, limitations, and bugs in MP1.20. For troubleshooting, see the Maintenance & Troubleshooting guide. See also section 7, “Support links & resources” on page 14 for links providing useful information.

- Printer is not supervised.
- Composer 2.03-01 tools, when installed with MM8000 MP2.31, cannot download MT8000 1.20 projects. You will need to re-install the Composer 2.03-01 provided for MT8000 1.20.
- The same Composer environment installed for MK8000 1.31 can safely handle MT8000 1.20 projects, as long as the MT8000 plug-ins are added using the Plug-in installer.
- If the History archive is enabled, performances in the user interface will decrease. This is because when an event has been reset or closed, the MT8001 has to record the history in permanent memory. This operation requires a significant amount of CPU time, so the unit will react more slowly to interface commands.
- Occasionally, the configuration download may be interrupted by an erroneous MT8001 watch-dog event. Should that occur, reboot MT8001 and enable ActiveSync. At that point, you can transfer the configuration via ActiveSync (watch-dog is disabled). Note that, in this case, the MT8001 restart will not be automatic and you have to re-launch it manually.

5 Localisation

Localising with Alchemy Catalyst

MT8000 can be localised in all languages supported by Windows CE. The translation process is based on the specialised tool Catalyst, used to localise all FSP-DMS products. A Catalyst file (TTK) containing all MT8001 text in English is provided by FSP-DMS support in a MT8000 localisation toolkit.

Catalyst software overview

Catalyst is an integrated translation environment by Alchemy Software (<http://www.alchemysoftware.ie/>). This application can extract (import) the text from XML and DLL files, and create a database file (TTK) that can be used for a comfortable translation, assisted by a guided interface, and management tools.

When complete, translated text can be exported back to DLL and XML files, which can be installed on a computer to test the localised software application.

Catalyst editions

Catalyst is available in 4 different editions (see also the catalyst product list at <http://www.alchemysoftware.ie/products/productline.html>). These editions are:

- **Catalyst Quickship**
Distributed free of charge and included in the MT8000 localisation toolkit. This edition allows you to translate the TTK text databases, but you cannot export text into DLL, and then test the localised MT8000. In order to check the results you need to ship the TTK files to FSP-DMS support, and wait for the exported DLL files. Catalyst Quickship can be downloaded at: <http://www.alchemysoftware.ie/quickship/>.
- **Catalyst Translator**
This edition is not included in the MT8000 toolkit, but is available for a moderate charge. This software enables you to translate the TTK text databases, to export text into DLL, and to test the localised MT8000.
- **Catalyst Localiser**
In addition to what is available in the Translator edition, Localiser provides more advanced tools for easy update of text versions, and more powerful tools for text activity management.



Note: We recommend you use the *Localiser* edition of Catalyst. Using Quickship (at no cost) will not permit you to immediately verify the localised software, possibly resulting in a long and costly localisation process.

- **Catalyst Developer**
This edition also supports tools for creating Quickship TTK databases.

Training on Catalyst

Using catalyst software is quite simple. Before using it extensively however, we recommend that you run some training sessions. These are available on the Internet at: <http://www.alchemysoftware.ie/tutorials/index.html>.

MT8000 text files

The MT8000 files generated by Catalyst are:

- The file "MT8001RESxxx.dll", containing MT8001 terminal texts,
 - has to be localised in Catalyst, exported and then copied into the 'XMLData\MT800x texts' folder under the MT8000 project directory (see "XMLData" folder structure in Fig. 2).

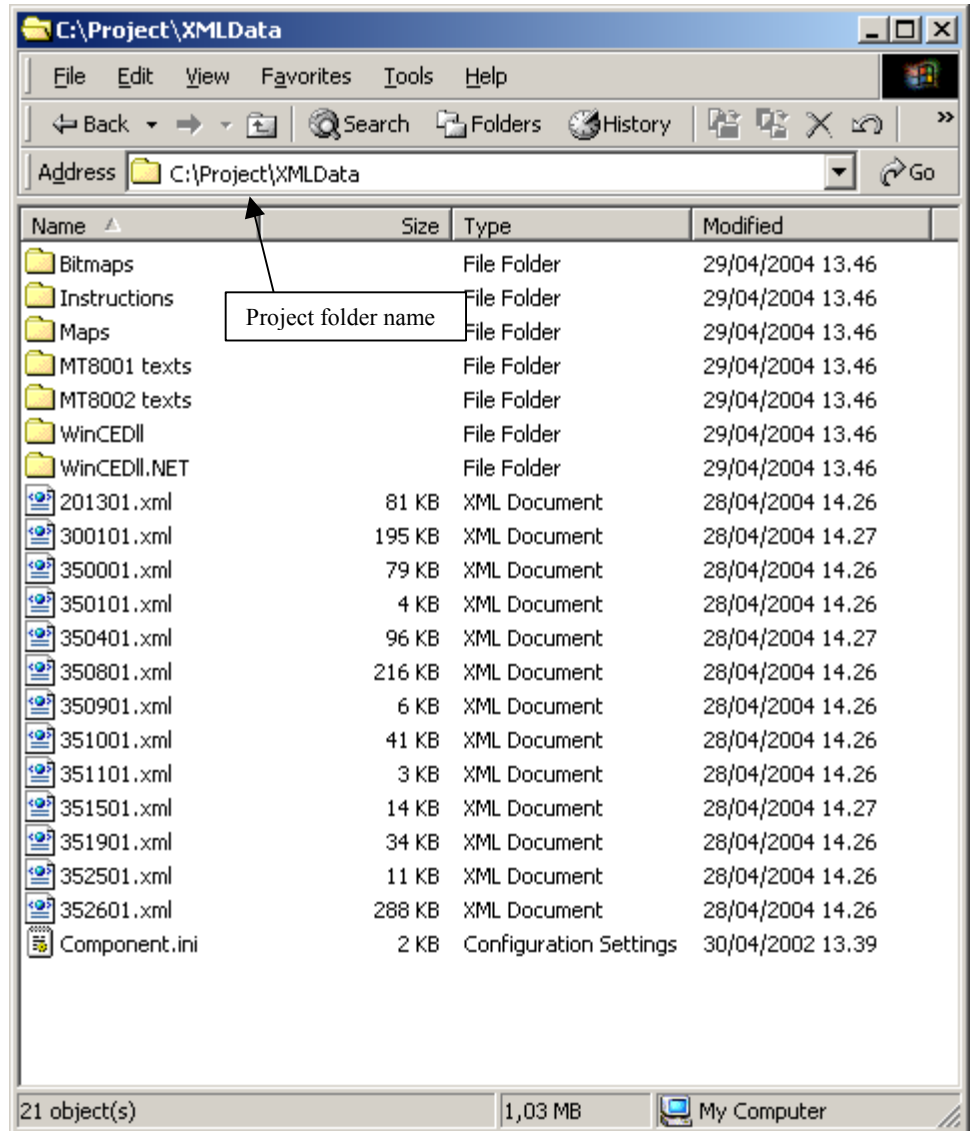


Fig. 2 XMLData folder

- The set of XML files <nnnnnn.XML> (e.g.: 201301.XML), containing the point-state texts (e.g. NORMAL, ALARM, and so on),
 - has to be localised in Catalyst, exported and then copied into the 'XMLData' Composer folders in the project directory.
- The set of DLL files <stname.DLL> (e.g.STMT8001Res.DLL), containing the sub-system template texts,
 - has to be localised in Catalyst,.
 - Send to FSP-DMS support to receive the localised Plug-in set.

6 Documentation

This section provides an overview of what information is included in each of the documents that accompany MT8001 MP1.20.

6.1 MT8000 Product Binder

The product binder contains all sales and technical documentation. This format reflects the new standard for FSP-DMS documents.

6.2 Sales documentation

Product Datasheets

This is a brief technical sales document to be used to introduce the MT8001 and MT8002 to potential customers.

Note: The MT8001 datasheet has been updated to reflect the new functionalities in MP1.20. A new document has been prepared for MT8002.

Sales Guide

This document contains background information about the target market for the MT8001, potential pitfalls to avoid, and some sales arguments.

Note: The sales guide is unchanged from MP1.10/1.01.

Sales Presentation

This is a brief PowerPoint presentation that can be used as is, or modified for client presentations. It provides an overview of the MT8001 system.

Note: The sales presentation is unchanged from MP1.10/1.01.

Tender Specifications

This new document contains the technical specifications that are met by MT8000 MP1.20.

6.3 Technical documentation

6.3.1 MT8000 documentation

Release Notes

This document outlines what's new and different about MP1.20, and how that affects your work.

Installation Configuration & Commissioning

The new ICC guide contains information about system limits, and hardware and software requirements. It provides step-by-step procedures for installation and configuration of the MT8001 and MT8002. During configuration, this manual should be used in tandem with the DMS8000 Connectivity Configuration guide.

Note: During commissioning and acceptance testing, the MT8000 ICC guide should be used with the Maintenance & Troubleshooting guide.

Maintenance & Troubleshooting

This new troubleshooting guide includes known problems encountered during and after installation, configuration, and commissioning with Composer and the entire family of DM8000 products, including MT8000, MK8000 and MM8000.

DMS8000 Connectivity Configuration Guide

This guide is shipped with all FSP-DMS products. It includes information about installing Composer, connecting and activating the hardware (dongle) key, setting up a new project, and configuring the networks and subsystems supported by DMS8000 products. This should be used in conjunction with the MT8001 ICC guide.

Note: This document has been updated to include new subsystems.

Operation Manual

This manual describes how to operate the Management Terminal.

Note: This has been updated to reflect the modifications in MP1.20.

7 Support links & resources

7.1 MT8000

CD-IT support provides information on the Intranet site

<http://www.cdi.cerberus.ch/support/supp-lmsn.asp>. A software troubleshooting guide is available at: <http://www.cdi.cerberus.ch/support/supp-trou.asp> (password required), or deliverable upon request.

Please note the new support mailbox: support-dms.it.sbt@siemens.com.

7.2 Microsoft

7.2.1 General support

General support about Microsoft Windows can be found at:

⇒ <http://support.microsoft.com/directory/>

More interesting support links are also available at the Intranet site page:

⇒ <http://www.cdi.cerberus.ch/support/supp-link.asp>

Also, the following link concerns specifically Windows NT and Windows 2000 platforms.

7.2.2 Microsoft ActiveSync®

In order to install the MT8000 plug-ins correctly, you must have installed ActiveSync on your PC first. Currently, the supported ActiveSync for MT8000 MP1.20 is version 3.7. If you do not have a copy of ActiveSync, you can download it from the following Microsoft® site:

<http://www.microsoft.com/windowsmobile/resources/downloads/pocketpc/activesync37.msp>

7.3 Adobe Acrobat

To view the MT8000 technical and operation manuals, you need to install the Adobe Acrobat Reader application. You can download a free version of this software from: <http://www.adobe.com/products/acrobat/readstep.html>.

Siemens Building Technologies AG
Alte Landstr. 411
CH-8708 Maennedorf
Tel. +41 1 922 6111
Fax +41 1 922 6450
www.sibt.com

Document no. 008094_a_en
Edition 02..2004

MT8001 Technical Material
Section 1