

SIEMENS



MM8000 MP2.31

Management Station

Product Release Notes

Fire & Security Products

Siemens Building Technologies Group

Data and design subject to change without notice. / Supply subject to availability.
© 2004 Copyright by
Siemens Building Technologies AG

We reserve all rights in this document and in the subject thereof. By acceptance of the document the recipient acknowledges these rights and undertakes not to publish the document nor the subject thereof in full or in part, nor to make them available to any third party without our prior express written authorization, nor to use it for any purpose other than for which it was delivered to him.

1	Introduction	3
2	What's new in MP2.31.....	4
2.1	New networks & subsystems supported.....	4
2.1.1	Networks & connectivity supported.....	4
2.1.2	Subsystems supported	4
2.2	Changes to functionality and features	5
2.2.1	General improvements.....	5
2.2.2	User interface.....	5
2.2.3	NK8000 (CDI-WAN).....	5
2.2.4	Subsystems.....	6
2.2.5	History Browser.....	7
2.2.6	Printing	7
2.2.7	Tools	7
2.2.8	Licensing.....	8
2.3	Changes to installation / configuration procedures.....	10
2.3.1	Installation.....	10
2.3.2	Configuration.....	11
2.4	Changes to documentation	11
3	Migrating from previous releases to MP2.31	12
3.1	Migrating from MP2.10/MP2.20	12
3.2	Migrating from MP2.21.....	14
3.3	Migrating from MP2.30.....	15
3.3.1	Migrating localized text from MP2.30 to MP2.31	16
4	Corrections and improvements in MP2.31	18
5	Known issues in MP2.31	22
5.1	Installation	22
5.2	Configuration.....	23
5.3	Functionality	25
6	Documentation	27
6.1	Sales documentation	27
6.2	Technical documentation	28
7	Customer support links & resources.....	29
7.1	MM8000	29
7.2	Microsoft.....	29
7.2.1	General support	29
7.2.2	Windows 2000 professional workstation and server.....	29
7.3	Adobe Acrobat	29

1 Introduction

These release notes provide information on the latest MM8000 MP2.31 software delivery. In this release, MM8000 has been further enhanced to provide a higher level of functionality, performance, and reliability.

This document covers the following topics:

Differences between MP2.31 and the previous market package.....	p. 4
Information about how to migrate to MP2.31 from the previous release	p. 12
Error corrections and improvements included in MP2.31	p. 12
Known issues in MP2.31	p. 22
MP2.31 Documentation.....	p. 27
Support links & resources	p. 29

2 What's new in MP2.31

This section details the differences between the new MM8000 MP2.31 and the previous MP2.30.

2.1 New networks & subsystems supported

This section lists the entire set of network and subsystem devices that can be connected to MM8000 MP2.31.

2.1.1 Networks & connectivity supported

The following network configuration types are supported:

- Cerloop – same as 2.30.
- CDI-Net – same as 2.30.
- NK8000 (CDI-WAN) – **New features in MP2.31** → see p.5.

The following network components are supported:

- MK7022 (ISO1745/Cerloop) – same as 2.30.
- CK11 (ISO1745) – same as MP2.30.
- GW20 and GW21 (CMSDL/CDI-Net) – same as 2.30.
- NK822x over serial line (NK8000 MP2.11) – New in MP2.31 → see p.5.
- NK822x over LAN/WAN (NK8000 MP2.11) – **Improved in MP2.31** → see p.5.

2.1.2 Subsystems supported

Fire & Gas Subsystems

- CS11 AlgoRex® EP7 – **Improved in MP2.31** → see p.6.
- CS11 AlgoRex® EP5 – **Improved in MP2.31** → see p.6.
- STT11 (système de télécommande et télésignalisation) – same as MP2.30.
- CZ10 – same as MP2.30.
- CC60 – **Issues resolved in MP2.31** → see p.19.

Intrusion Subsystems

- CS440 – same as MP2.30
- CS4 – **Improved in MP2.31** → see p.6.
- CZ12 – same as MP2.30.
- CS6 Quarto MP3 – same as MP2.30.
→ Note that the latest “MP3+” release can work with MM8000 but it is not fully supported. Specifically, some newly added information about CT6 and Power supply states are not handled.

Other Subsystems

- DMS7000 units, including MM- and MF-7033– same as MP2.30.
- Simatrix CCTV (16-4; 64-8; SYS) – same as MP2.30.
- CF9000 I/O subsystem (DF8020/8040/8045/8046) – same as MP2.30.
- Philips/Burle CCTV (LTC 8xxx) – **New in MP2.31** → see p.6.

2.2 Changes to functionality and features

This section presents the new features in MP2.31 that can have the most beneficial impact on the market. Further detailed improvements and resolved issues are given in the form of a technical report in chapter 4 at p.18.

2.2.1 General improvements

Product reliability

The long-term reliability of MM8000 has been improved addressing various defects related to memory management.

Performances

MM8000 Software has been improved for handling a much faster:

- Data acquisition.
- AutoCAD file handling.
- Event selection.
- Graphic navigation.

2.2.2 User interface

Subsequent event handling

When an object generates a subsequent alarm, MM8000 provides now proper signalisations on the user interface: the event icon blinks in full colour and the event sorting priority is raised appropriately (ref #5214, #5303).

➔ See 006798 MM8000 MP2.31 Operation Manual.

Event generation is based on the logical structure

Previous events based on the physical structure have been moved to the logical tree as long as a link between the two exists (ref. #5157)

2.2.3 NK8000 (CDI-WAN)

Support for multiple LAN/WAN connectivity to NK822x

Up to four MM8000 MP2.31 stations (three if serial connection is also used) can connect to NK822x M2.11 using CMSDL/IP protocol. This allows for multi-station solutions over LAN/WAN.

➔ See 007083 DMS8000 Connectivity Configuration Guide.

Support for serial connection to NK822x

A MM8000 MP2.31 station can now connect via serial line to NK822x M2.11 using CMSDL protocol. This permits to add local stations for small LAN installations or for large WAN systems that require an additional level of event treatment.

➔ See 007083 DMS8000 Connectivity Configuration Guide.

Advanced diagnostic tools for NK822x

The most important functions previously available in the off-line tool NW8204 have been ported in Composer. This enables technical operators to remotely monitor and upgrade the NK822x units.

➔ See 007083 DMS8000 Connectivity Configuration Guide.

2.2.4 Subsystems

Philips/Burle CCTV

MM8000 MP2.31 can now support the LTC8000 family of switchers via NK8000 MP2.11 networks.

Note that the MM8000 connectivity solution to Philips/Burle applies only to NK822x MP2.11 and it is technically not compatible with older Burle solutions for LMS over CDI-NET network. In other words:

- Old CDI-NET options for Philips/Burle are compatible with LMSmodular only.
 - New NK8000 options for Philips/Burle are compatible with MM8000 and MK8000 only.
- See 007083 DMS8000 Connectivity Configuration Guide.

The Philips/Burle LTC8000 family includes various switching units ranging from 8 to 4096 camera inputs, and from 2 to 512 monitor outputs. Alarms inputs (8 to 1024) are also supported to trigger alarm-handling switching procedures.

The list of compatible models (supporting the Allegiant® Main CPU Interface Software / Command Console Language) includes:

- LTC8100: 8x2
- LTC8200: 16x5
- LTC8300: 32x6
- LTC8500: 64x8
- LTC8600: 128x16
- LTC8800: 256x64
- LTC8900: 4096x512

→ For specific information about Burle CCTV systems, see <http://www.burlecctv.com/matrix.htm>.

CS11 AlgoRex® EP5

- “Partially off “ and “Fault” conditions now available at Area level. (ref. #3193 #3194)

CS11 AlgoRex® EP7

- In the CC11 EP7 data tree, the Elements have been moved from the physical to the logical structure. Note that this applies to new MP2.31 configurations, projects generated with previous model do not change and they are still fully supported.
- The new telegram related to the detector “application error” is now supported.
- A new telegram to set the Remote Transmission Channels OFF has been added.
- An option for transmitting a general acknowledgment when treating an alarm is now supported for each of the CC11 units. If enabled, it results in acknowledging the entire set of the alarm-related events with a single command.

CS4 (early CC440 releases)

- Support is provided for special CS4 versions, actually early CC440's equipped with the CK4 gateway. This version can manage up to 254 zones and 100 sections (ref. #5024, #5256).

2.2.5 History Browser

History report printouts

Printing out the reports resulting from archive queries is now possible.

→ See 006798 MM8000 MP2.31 Operation Manual.

Preferred column setting in the report view

A preferred column-width setting can now be quickly selected for best data visibility of the report lists.

→ See 006798 MM8000 MP2.31 Operation Manual.

2.2.6 Printing

More journaling layouts

New journaling templates are now available (ref. #5240). They are meant for addressing both customer and technical requirements.

The customer-oriented template presents the full event location pathname and is provided for both page (A4) and line printers.

Instead, the technical template includes the technical text field and a more compact pathname, which is excluding the tree structure above the subsystem node. It is also available in two layouts, for page and line printers.

2.2.7 Tools

New Composer plug-ins

New Composer plug-ins are available for supporting the new NK8000 functions and the Philips/Burle CCTV units.

→ See 007083 DMS8000 Connectivity Configuration Guide.

New configuration reports

Composer can now export reports about the configured maps, reactions and operating procedures for any set of points. This allows for off-line analysis and processing on the most important configuration options.

→ See 006799 MM8000 MP2.31 ICC manual.

Improved error messages

In Composer, an effort has been made to provide clearer messages in case of operation errors or exceptions.

New on-line help

On-line help pages are available in Composer. Select help in the menu or press F1 to open the help window.

Line Monitor

A new technical utility is now available for tracing the message traffic transmitted and received by MM8000. See "LineMonitor.exe" in the "\MM8000\Utilities\Line Monitor" and refer to the on-line help for detailed instructions how to use it (just launch the application and select the help page in the menu).

2.2.8 Licensing

License PAKs

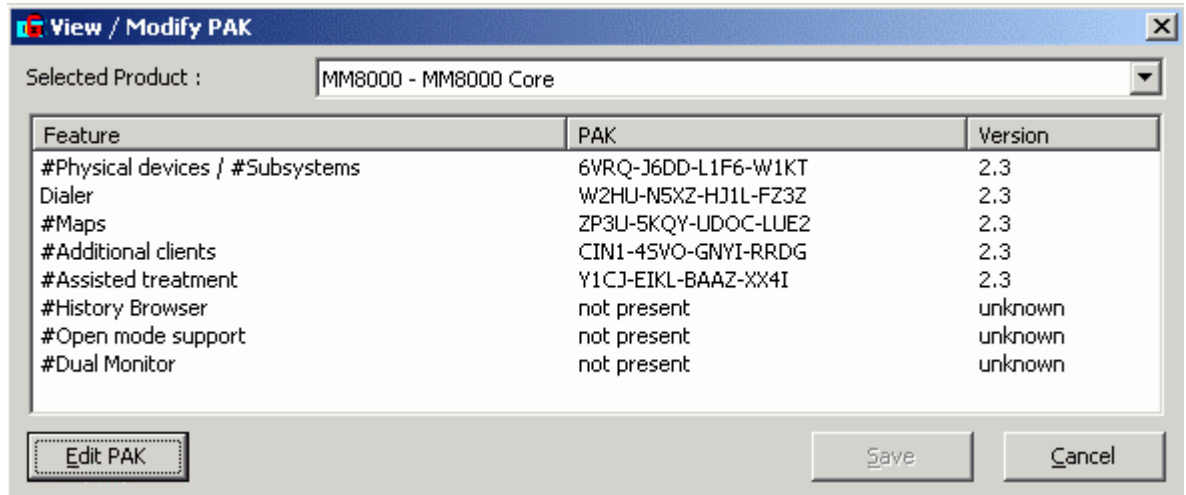
MM8000 MP2.31 requires the PAK codes 2.3. Older licenses should be upgraded to 2.3.

Please be aware that, unlike previous MP2.30, the new software necessarily needs the complete set of MM8000 PAK codes, which can enable the following functions:

License	Function	Notes
WW8000 Composer	Composer tool	-
NS8010 Cerloop Driver	ISO1745 serial connections	License indicates the number of ports
NS8012 CDI-net Driver	CMSDL serial connections	License indicates the number of ports
NS8210 CDI-WAN driver	NK8000 LAN connection	License indicates the max. number of NK822x and the Encryption option
MM8000 core - # Subsystems - # Physical devices	Subsystem and point support in MM8000 server	License indicates the max. number of subsystems and physical devices.
MM8000 core - Dialler	Dialler option in event treatment	-
MM8000 core - #Maps	Graphic map support in event treatment and plant navigation	License indicates the max. number of maps.
MM8000 core - #Additional clients	Client station support (floating license)	License indicates the max. number of client stations that can connect at the same time to the MM8000 server.
MM8000 core - #Assisted treatment	Assisted treatment support on MM8000 clients (floating license)	License indicates the max. number of client stations enabled to assisted treatment at the same time.
MM8000 core - #History Browser	History application support on MM8000 clients	License indicates the max. number of client stations enabled to open the History Browser.
MM8000 core - #Open mode support	Open mode (access to Windows while MM8000 is active).	License indicates the max. number of client stations enabled to the open mode.
MM8000 core - #Dual monitor	Support for double monitor on MM8000 client	License indicates the number of client stations equipped with two monitors.

On an existing MP2.30, there might be an incomplete set of codes that is detected by MP2.31, whereas MP2.30 could tolerate it. This is likely to occur on earlier MP2.3 licenses release: **carefully check your license codes before updating to MP2.31.**

This verification should concern the “MM8000 core” license; as an example, please see the following case:



→ For more details on the MM8000 license options, please refer to the DMS price policy document and to the related MM8000 Project Sheet (see intranet site: <http://www.cdi.cerberus.ch/products/salespolicies/prod-sale-curr.asp>, password required).

→ See key installation notes at p.10.

→ See 007083 DMS8000 Connectivity Configuration Guide.

New “service” key

A special type of dongles, called “service keys”, are now recognised for enabling an easy maintenance to the MM8000 sites even without any specific PAK code.

→ See 007083 DMS8000 Connectivity Configuration Guide.

New key driver and support for USB keys

MM8000 MP2.31 is supplied with new drivers for the Sentinel dongles. Both parallel and USB key are supported, even if used at the same time (see however a limitation concerning older parallel key at p.24).

→ See 007083 DMS8000 Connectivity Configuration Guide.

New logs with detailed license requirements

During the download procedure, the software generates detailed log files on the license requirements for the specific configuration, including the number of points, subsystems and maps. **Log files are stored in “\MM8000\Logs”.**

2.3 Changes to installation / configuration procedures

2.3.1 Installation

Windows 2000 version

Window 2000 requires service pack 4 (SP4). Also, security patches provided by Microsoft (e.g. KB823980) are recommended.

→ See links to Microsoft web site in section 7.2 at p.29.

Hardware key (dongle) driver

MP2.31 includes new drivers for the Sentinel keys. However, there are a few important issues that you need to be aware of:

1. If a previous Sentinel driver is installed, typically because of an older MM8000 installation, then it is recommended to uninstall it using the standard Windows procedure (Start → Settings → Control Panel → Add/remove Programs). Note that removing the previous MM8000 does not imply removing the Sentinel driver.
2. During MP2.31 installation, you will be requested to remove the hardware key. Failing to do that would cause driver installation troubles. In case of such difficulties, please proceed as follows:
 - Remove the faulty MM8000 installation.
 - Shut Windows down.
 - Uninstall the key.
 - Boot the PC.
 - Delete the old MM8000 folder.
 - Run again the setup procedure.
 - Shut Windows down again.
 - Install the key on the parallel or USB port.
 - Reboot the PC.
3. In case the PAK manager still cannot recognise the HW key, you can install the sentinel driver manually. Just launch the set-up located in:
 MM8000 → PAK Manager → Sentinel Drivers → SSD5411-32bit
 and follow the instructions; when prompted, select the default installation.

MM8000 license: demo mode and service mode

Referring to the new demo and service modes, the table below illustrates how Composer and MM8000 behave in relation to the type of key and PAK code.

		Only Customer Key inserted	Only Service key inserted	Customer Key and Service Key inserted	No Key inserted
MM8000 and Drivers	Valid PAK codes for customer key	MM8000 runs normally	MM8000 cannot run	MM8000 runs normally	MM8000 cannot run
	Invalid PAK codes for customer key	MM8000 cannot run	MM8000 cannot run	MM8000 cannot run	MM8000 cannot run
	No PAK codes for customer key	MM8000 cannot run	MM8000 can run for 2 hours (demo)	MM8000 cannot run	MM8000 can run for 2 hours (demo)
Composer	Valid PAK code for customer key	Composer runs normally	Composer runs normally (service)	Composer runs normally (service)	Composer cannot run
	Invalid PAK code for customer key	Composer cannot run	Composer runs normally (service)	Composer runs normally (service)	Composer cannot run
	No PAK code for customer key	Composer cannot run	Composer runs normally	Composer runs normally	Composer cannot run

2.3.2 Configuration

Composer version

MM8000 MP2.31 comes with Composer version 2.03-01. This version of Composer can be used to configure MK8000 MP1.31 and MT8000 MP1.20 projects as well (plug-ins are obviously required), but not to download MT8001/MT8002 terminals.

Download

Incremental download is much faster and should always be used after the first complete download. The improvements concern both the modifications to points and maps.

Recovery of damaged projects

An automatic recovery procedure is provided during database restore. This may fix problems in corrupted MM8000 project backups.

Windows event viewer

The logs stored in the Windows event list have been reduced and simplified.

2.4 Changes to documentation

The list below summarises the available documentation material. For both sales and technical documents, it reports their status in relation to the MP2.31 release.

EDMS	Document Name	Status
006882	Product Data Sheet	Updated
006883	System Description	Updated
006961	Sales Presentation	No changes from 2.20
007086	Sales Guide	No changes from 2.20
006884	Tender Specifications	No changes from 2.30
007087	Offer Template	Updated
007076	Release Notes MP2.10	No changes from 2.10
007145	Release Notes MP2.20	No changes from 2.20
007791	Release Notes MP2.30	New (this document)
006799	Installation Configuration and Commissioning (ICC)	Updated
007875	MM8000 Localisation Guidelines	Updated
007088	MM8000 Maintenance & Troubleshooting	Replaced
	→ See 008080 DMS8000 Maintenance & Troubleshooting	
007083	DMS8000 Connectivity Configuration	Updated
006798	Operation	Updated

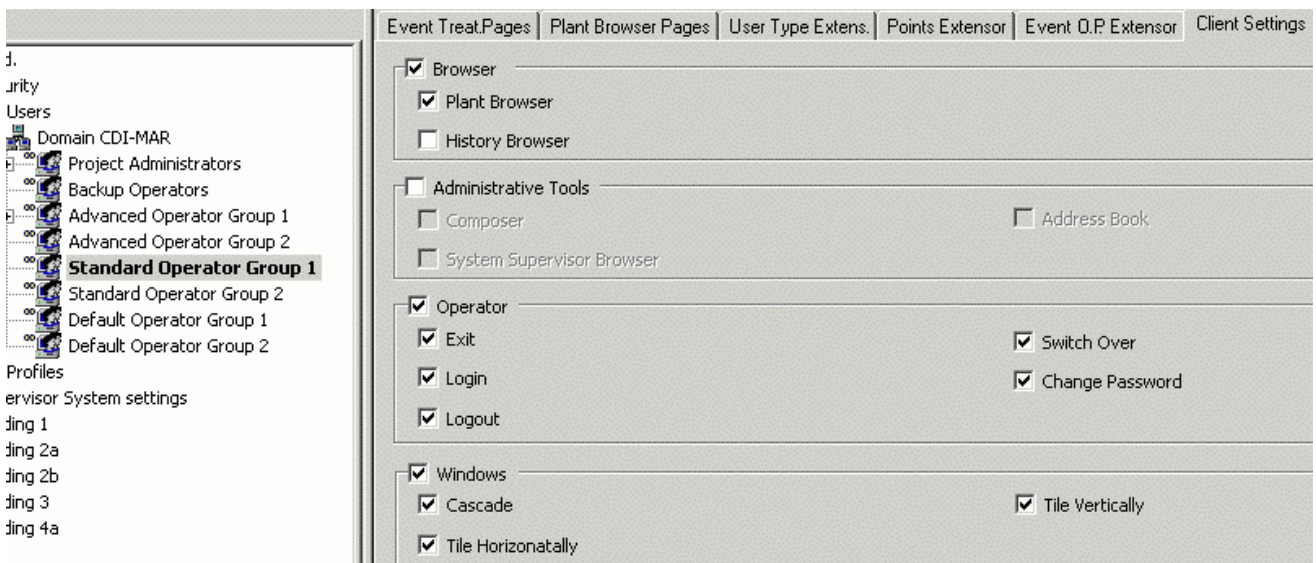
→ Please see chapter 6 at p.27 for a complete presentation of the above listed documents.

3 Migrating from previous releases to MP2.31

3.1 Migrating from MP2.10/MP2.20

The migration from release MP2.10 and MP2.20 is possible as described in this chapter. You will need to follow this procedure:

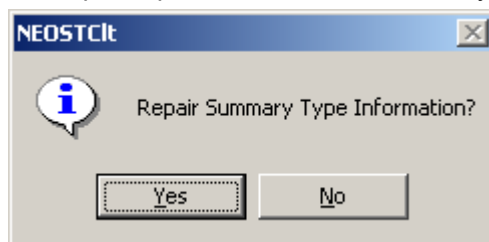
1. Before starting any activity, check the installation requirements and the necessary license for MP2.31.
 - See document 006799 “MM8000 Installation Configuration & Commissioning guide”.
2. In the MP2.10/MP2.20 configuration, take note of the “Client settings” of each of the User Groups (see figure and form below).



Level	System Name	Plant browser	History browser	Composer	System Sup.	Address Book	MM8000 Exit	Operator login	Operator logout	Operator switchover	Change password	Windows (cascade)	Preferred view	Station mode	Windows Applications
4	Project Administrators														
3	Backup Operators														
2.	Advanced Operator Group 1														
2.	Advanced Operator Group 2														
1.	Standard Operator Group 1														
1.	Standard Operator Group 2														
0.	Default Operator Group 1														
0.	Default Operator Group 2														

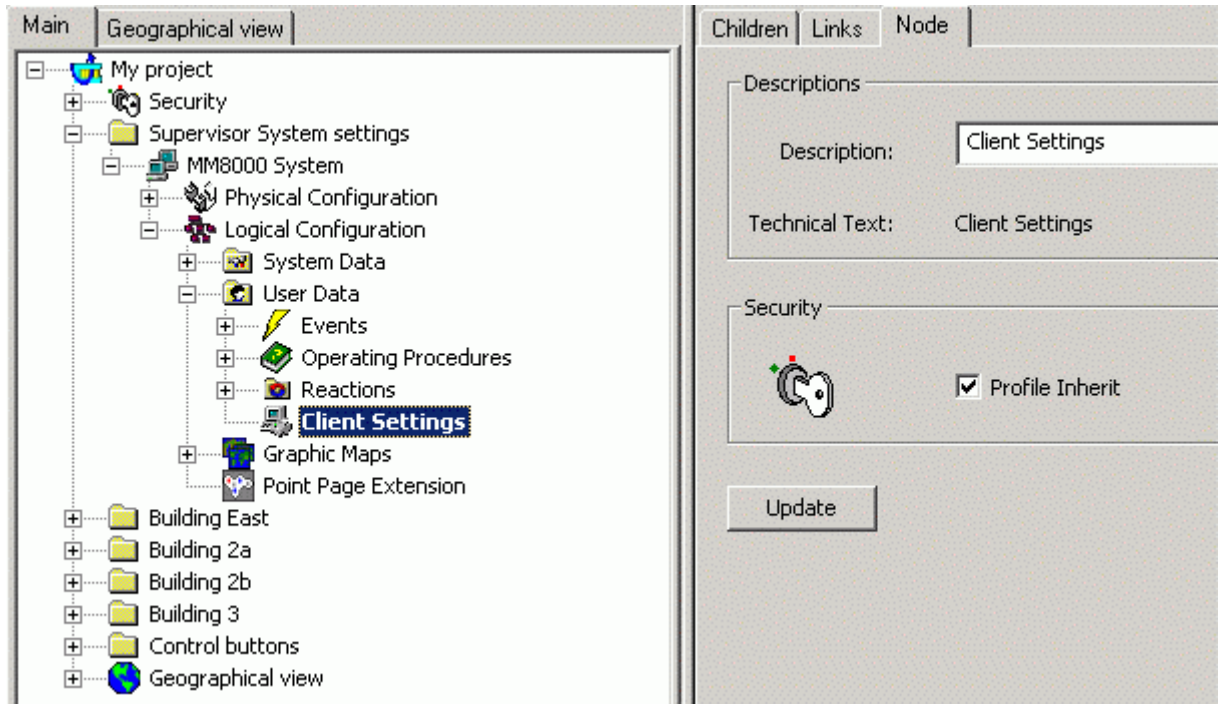
3. Uninstall the previous MM8000 program using standard Windows procedure.

4. Restart the computer.
5. Verify that the <target directory> folder (by default C:\MM8000) has been deleted as well. If not, manually delete it.
6. Follow the installation instructions detailed in the document 006799 “MM8000 Installation Configuration & Commissioning guide”.
7. If required, install the translated texts as described in 007875 “MM8000 Localisation Guide”. If you need to migrate MP2.30 texts, see 3.3.1 at p.16.
8. Set Composer tools in “Debug mode”: Launch the utility.
C:\MM8000\Utilities\Reg\ST_DebugYes.reg
9. Start Composer and restore your project.
10. In the MM8000 structure tree, select
Supervision ... → MM8000 System → Logical Configuration → User Data
11. On the Node tab, press the button labelled “Project Update”.
12. The update procedure will start and may present a window like the following:



We recommend you to select 'Yes'.

13. The update procedure will proceed for some minutes, depending on the size of the project. Wait for the procedure to complete.
14. The MP2.10 or MP2.20 projects need now the “Client Settings” update. Select the node:
User Data → Client settings
and click 'Update'. The update procedure will quickly execute.



15. After that, using the form prepared at step 0 above, check and possibly correct the “Client settings” associated to each user group.
16. If the projects include graphic maps, you will need to update their format. Select the node “Graphic maps” and click ‘Update’
17. The update procedure will proceed for some minutes, depending on the size of the project. Wait for the procedure to complete.
18. Close Composer.
19. Reset the Composer “Debug mode” launching the utility:
C:\MM8000\Utilities\Reg\ST_DebugNo.reg

3.2 Migrating from MP2.21

The migration from release MP2.21 is very much the same as what described above for MP2.20. However, if NK8000 (CDI-WAN) was used in a MP2.21 project, then you need to change the NK8223 model that has been changed in MP2.30 and later.

This implies that, before uninstalling MP2.21, you have to delete the NK8223 sub-systems and then backup the project.

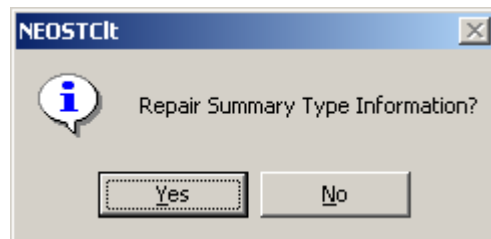
➔ Before deleting the NK8223 units, take note of their connection links.

Then, after the update procedure to MP2.31 has completed, you will need to insert the NK8223 in the configuration structure and link the connection ports again.

3.3 Migrating from MP2.30

The migration from release MP2.30 is possible as described in this chapter. You will need to follow this procedure:

1. Before starting any activity, check the installation requirements and the necessary license for MP2.31.
→ See document 006799 “MM8000 Installation Configuration & Commissioning guide”.
2. Uninstall the previous MM8000 program using standard Windows procedure.
3. Restart the computer.
4. Verify that the <target directory> folder (by default C:\MM8000) has been deleted as well. If not, manually delete it.
5. Follow the installation instructions detailed in the document 006799 “MM8000 Installation Configuration & Commissioning guide”.
6. If required, install the translated texts as described in 007875 “MM8000 Localisation Guide”.
7. Set Composer tools in “Debug mode”: Launch the utility.
C:\MM8000\Utilities\Reg\ST_DebugYes.reg
8. Start Composer and restore your project.
9. In the MM8000 structure tree, select
Supervision ... → MM8000 System → Logical Configuration → User Data
10. On the Node tab, press the button labelled “Project Update”.
11. The update procedure will start and may present a window like the following:



We recommend you to select 'Yes'.

12. The update procedure will proceed for some minutes, depending on the size of the project. Wait for the procedure to complete.
13. If the projects include graphic maps, you will need to update their format.
Select the node:
Graphic maps
and click 'Update'
14. The update procedure will proceed for some minutes, depending on the size of the project. Wait for the procedure to complete.
15. Close Composer.
16. Reset the Composer “Debug mode” launching the utility:
C:\MM8000\Utilities\Reg\ST_DebugNo.reg

3.3.1 Migrating localized text from MP2.30 to MP2.31

Referring to the Catalyst translation environment for MM8000 (see 007875 “MM8000 Localisation Guide”), the list below contains the strings that have been modified in MP2.31 in comparison with MP2.30.

+---MM8000	
	+---Client
	AMResource.dll StringTable 1
	DialerResources.dll =
	EBRResources.dll StringTable 14, 15, 22
	ETRepRes.dll StringTable 11
	ETResources.dll StringTable 1511, 1001
	EventDescRes.dll =
	FWRResource.dll Menu 100
	StringTable 9, 10
	HBResource.dll StringTable 102, 114, 115, 121, 141, 142, 163
	MapResources.dll =
	Mm8InfoRes.dll =
	NMSBarRes.dll StringTable 1001, 1002, 3001, 3002
	Dialog 1141
	PBResources.dll StringTable 18, 36
	PointDialogRes...es.dll =
	+---Server
	CNAPInfoDB_Res.dll =
	ESRes.dll =
	HSResource.dll StringTable 104
	LSResources.dll =
	NPSRes.dll StringTable 33, 34
	OPResources.dll StringTable 9
	RSResources.dll StringTable 20, 22, 23, 24
	\---Support Tools
	DixieSSBrows...InRes.dll =
+---MM8000 Subsystem Tools	
	+---Network
	CDINetRes.DLL =
	CerbanSplitterRes.DLL =
	CerLoopNetworkRes.DLL =
	GW20Res.DLL =
	GW21Res.DLL =
	MK7022Res.DLL =
	NK822xRes.DLL StringTable 626, 627
	\---old
	NK8223Res.DLL =
	+---Security
	SecProfSTResources.DLL =
	UserSTRes.DLL =
	+---Subsystem
	BurleRes.DLL New
	CC11EP7Res.DLL StringTable - 631
	CC11Res.DLL StringTable 626, 631
	CC60Res.DLL =

	CF9000Res.DLL	StringTable 626, 627
	CF9000systemRes.DLL	=
	CK11EP7Res.DLL	StringTable - 626
	CK11Res.DLL	StringTable - 626
	CS11EP7Res.DLL	=
	CS11Res.DLL	StringTable - 626
	CS440Res.DLL	=
	CS4Res.DLL	=
	CZ10Res.DLL	StringTable - 627
	CZ12Res.DLL	=
	DMS7000Res.DLL	=
	GuartoRes.DLL	StringTable - 627
	SimatrixRes.DLL	=
	SK11Res.DLL	=
	STT11Res.DLL	StringTable 626, 627
	STT11SystemRes.DLL	=
	System	
	DixieMainResources.DLL	=
	GenericNodeSTRes.DLL	=
	HistorianSTRes.DLL	=
	JSTRes.DLL	=
	PrinterSTRes.DLL	=
	StationSTRes.DLL	=
	STGeogr...NodeRes.DLL	=
	STMTRes.DLL	=
	TwinsManagerRes.DLL	=

4 Corrections and improvements in MP2.31

This chapter provides a detailed report on the issues resolved as well as on detailed improvements in MP2.31.

Be aware that the most severe issues in MP2.30 have been already addressed by specific service releases (fixes #2.30-01 and #2.30--02), which are now fully integrated into MP2.31 software. However, MP2.31 includes further enhancements and therefore, whenever any of those can be somehow beneficial, we recommend you to plan for updating existing installations

On top of remarkable achievements in the areas of product reliability and performance, the functions addressed by specific corrections and improvements are the following:

- Installation
- User interface
- NS8210 driver for NK822x
- CS11 AlgoRex EP7
- CC60
- CS6 Guarto
- Event treatment
- Graphics
- History browser
- Printed output: journaling and alarm printout
- Import procedures for CS4, CZ10, and CS11 AlgoRex
- Tool environment
- License

The table below illustrates the most important corrections and improvements. Note that the list does not cover the entire set of modifications included in the software.

#	Function	Error (as it was before MP2.31) or improvement description	Notes
3740	Installation	If the computer name was longer 15 characters, previous MM8000 software used not to work properly. → The computer name is also used as local domain name for MM8000 Stand-Alone stations. Note that in Composer, and namely in the M8000 security settings, the domain name should be anyway cut to 15 characters, e.g.: the computer name "My_MM8000_station" (in Composer → MM8000 station name) should be indicated as "My_MM8000_stati" domain (in Composer → MM8000 domain name).	
3380	User interface (Event filters)	One of the event filter options, related to "Unprocessed events", did not work properly	
4063	User interface (Plant browser)	If a CZ10 zone had no affiliated elements, Plant Browser used to report the zone's "Disconnect" property as faulty (greyed text).	
4300	User interface (Dual monitor)	If configured, the 2nd monitor must necessarily be used for the history browser, which could no more start on the 1st monitor.	
4320	User interface (Dual monitor)	After the use of "Empty_DB" procedure, the 2nd monitor was disabled.	

#	Function	Error (as it was before MP2.31) or improvement description	Notes
4597	User interface (Symbol colour)	Point symbols might appear with a wrong colour (e.g. acknowledged alarm in blue).	
4876	User interface (Audio)	The sound frequency for very-high priority events has been modified for easier recognition.	
4056	User interface (NK822x anomaly)	The "Not configured" condition of NK822x lines was erroneously propagated as anomaly.	
4981	User interface	In client/server systems, client operation status (user login/logout) was not properly refreshed after downloading.	
5043 5077	User interface (Refreshing maps)	Peaks of message acquisition while refreshing a graphic map used to affect the proper display of AutoCAD backgrounds and point symbols.	Corrected in 2.30-01
5086	User interface (Point properties)	Point property windows could display without the proper information when selected from graphic map.	Corrected in 2.30-01
5103	NS8210 CDIWAN driver	An incorrect CS11structure used to be shown when connected via NK822x. This could also result in a wrong communication diagnostics.	Corrected in 2.30-01
5105 5339	NS8210 CDIWAN driver	Difficulties in re-establishing the communication link between NS8210 and NK822x have been removed.	Corrected in 2.30-01
5120	User interface (Comm. Feedback)	Improvement: command feedback allows now for immediate reporting of command execution failure.	
5159	User interface (Event filters)	Even filter by discipline did not work properly.	
5250	User interface (Geographic tree)	Improvement: geographic nodes include now new properties, namely "Exclusion", "Disconnection", "Test"	
5090	CS11 EP7	Wrong information shown in the technical text field of CC11 EP7 physical tree points.	
5150	CS11 EP7	Extinguishing "Pre-alarm" did not reset when escalating to "Alarm".	
4560 5104 5133	CS11 Vitality in NK822x	Although required for CS11 systems, the vitality check could not be enabled in the NK822x tool.	Corrected in 2.30-02
5139	CC60	"Pre-alarm" and "warning" conditions were not properly reset.	Corrected in 2.30-02
5360	CS6 Quarto	CS6 day mode message did not generate an event.	
4959	Event treatment (Ext. applications)	In assisted event treatment, external Windows applications could not be launched twice even when set as repeatable step.	
5018	Event treatment (Automatic mode)	Occasionally, the operator switchover did not work properly when the automatic mode was selected.	
5029	Event treatment (Automatic mode)	New incoming events did not cause the temporary suspension of the current treatment.	
5057	Event treatment (Auto-Ack)	Upon selecting an event, the automatic acknowledgment did not work even if selected in the configuration.	Corrected in 2.30-01
5158	Event treatment (Dialler)	In certain conditions, related to close-mode users and new users, dialling assistant did not work properly.	
5255	Event treatment (Access rights)	Some settings could result in users being enabled to enter the assisted treatment but not to execute any step.	
3503	Graphics	Improvement: when a page is displayed, the first point in the graphics is now automatically selected	
3508	Graphics	In certain conditions, maps used to be refreshed with a wrong zoom factor and somehow misplaced.	
3533	Graphics	Point grouping has been disabled on the graphic maps in order to correct errors in the automatic assignment	Corrected in 2.30-02

Corrections and improvements in MP2.31

#	Function	Error (as it was before MP2.31) or improvement description	Notes
4612	Graphics	Errors occurred if CAD files with the same name (but located in different folders) were used in a project.	Corrected in 2.30-02
4753	Graphics	Filter on the tree view is now correctly applied to the points on the graphic maps	
4883	Graphics	Aerial view window might remain open even after its use with the graphic maps.	
5010	Graphics	Renaming a map's layer resulted in losing the link to the associated depth.	
5020	Graphics	Due to delayed point refresh, graphic maps could temporarily report wrong information.	Corrected in 2.30-01
5042	Graphics	In assisted event treatment, if the map step was not the first in the procedure list, it could happen that the graphic map did not display.	Corrected in 2.30-01
5050	Graphics	In assisted event treatment, the depth navigation might occasionally not work properly.	Corrected in 2.30-01
5079	Graphics	Points and map background could be greyed out or disappear after repetitive selections of "event source" and "event details" pushbuttons.	
5108	Graphics	Layer conditional visibility, related to zoom levels, did not work properly on metric-based maps.	
5183	Graphics	Grouping the AutoCAD background of a map with another graphic object used to result in an error when loading the CAD file again.	
5253	Graphics	Names of folders containing AutoCAD files could not include national characters (ASCII codes >127) or errors occurred in reading the files.	
3852	History (Property tool)	Could not disable the history logs for point properties	
4972	History (Backup/restore)	Occasional history browser troubles while backup or restore in progress	
5098	History (User interface)	History browser could not support the translation into Hebrew of some screen text.	Corrected in 2.30-01
5115	History (Backup/restore)	History backup could not be executed on network disk drives.	
4945	Printed journaling (Network printers)	Network printers could not work properly with MM8000.	
5143	Printed journaling (Date format)	Date format could not be set according to Windows locales.	
5238 5239	Printed journaling (Tech.text/location)	Improvement: the technical text and a shorter location path can now be printed.	
4920	Alarm printout (Print sequence)	Sequence of maps and pages used to be wrong in the alarm printouts.	
2207	Import CZ10	Some CZ10 objects (zones, lines, I/O devices) might not be imported	
4043	Import CS11 AlgoRex	Improvement: Composer can now recognise old and unsupported CC11 metafiles (EP2/EP3) and provide a specific warning message.	
5542	Import CS11 AlgoRex	Previous problems in re-importing metafiles with moved objects have been partially resolved. Import can now delete the previous object and properly create a new one in the new position of the CC11 structure. However, links to pages and/or reactions will need to be configured again for the new object (ref #5521).	
5095	Import CS4	CS4 push-button zones could not be imported.	
5262	Import CS4	Text including parenthesis could not be imported properly; text string was truncated.	

#	Function	Error (as it was before MP2.31) or improvement description	Notes
5155	Import	Importing files from floppy disk used to create problems after the import procedure.	
4077 5049	Tool environment (Project backup)	Failures occurring during backup procedure were not properly reported to the user interface. This could result in a corrupted backup file being generated. A specific error has been corrected in the graphic tool.	
4972	Tool environment (CS6 Guarto)	Improvement for CS6 Guarto: validity check is now provided on LON and BacNet parameter values.	
5040	Tool environment (cut/copy & paste)	Due to a number of error cases, copy/cut and paste has been disabled in Composer with one important exception, namely the maps, which can instead be copied and pasted. Note that the automatic point assignment requires that a new map is saved, closed and then re-opened.	Modified in 2.30-02
4139 5114	Tool environment (Map assignment)	In certain cases, the automatic assignment of maps to points failed to execute. E.g.: when maps were located in different folders.	
5025 5027 5096	Tool environment (Download)	Incremental download could fail to properly update the system. Depending on the specific conditions, problems could affect: <ul style="list-style-type: none"> • Reactions. • Client stations. • Event categories. 	
5032	Tool environment (Nk8000 download)	Problems in downloading NK8222 have been corrected.	Corrected in 2.30-02
5146	Tool environment (Update MP2.1)	Difficulties in updating MP2.1 projects.	
5492	Tool environment (Download)	If including maps, download used to fail when MM8000 was installed on a different disk partition than the Windows operating system.	
4958	License (USB key)	Difficulties with USB keys have been solved.	
5137	License (Required license)	Fire zones were erroneously calculated in the license count as physical objects.	Corrected in 2.30-02

5 Known issues in MP2.31

This is a list of known limitations, problems and bugs in MP2.31. For more troubleshooting information, see the document 008080 Maintenance & Troubleshooting guide and the intranet support guide, see 7.1 at p.29.

5.1 Installation

- **Do not forget MSDE**

- SQL Server 2000 data engine (MSDE) + SP3 must be installed before initiating the MM8000 installation.
- Note: MM8000 MP2.31 requires MSDE V8 (also labelled MSDE 2000). Any earlier version of SQL server or MSDE, **particularly MSDE V7 installed by MS-Visio 2000, should be removed.**

- **SQL security**

- MSDE has a security weakness (the well known 'sa' password) that can be fixed by setting your SQL password with a special command available in:
C:\MM8000\Utilities\Bat\SetSQLServerPassword.bat
Note: You can edit this file and replace the "%1" field with your own password. Then save the file with another name (the original is read-only) and run it. Keep the new file so as not to forget the new SQL password.

- **Troubles with the hardware key**

If after the installation the PAK manager cannot recognise the HW key, the sentinel drivers need to be installed manually. In this case launch the set-up located in:

MM8000 → PAK Manager → Sentinel Drivers → SSD5411-32bit
and follow the instructions; when prompted, select the default installation.

- **Anti-virus software**

- This software may affect the performances of the graphical software. We recommend the use of virus protection software that proved to ensure best performances, namely:
→ McAfee 7.0 or later;
→ Norton V5 or later.

- **Cannot change domain/PC name**

- MM8000 does not support a domain/PC name change on the Client or Server after the installation. The solution is to uninstall MM8000, reboot, delete the C:\MM8000 folder, and then install the software again.
→ See also 006799 MM8000 ICC manual.

- **Printer spooler**

- MM8000 always requires the printer spooler to be enabled for the configured printers.

- **Clear History DB**

- Rare cases of difficulties in the history functions have been reported after installation. In such cases, the FSP-DMS support may recommend the use of the batch:
C:\MM8000\Utilities\Bat\Historian DB reset.bat

That clears the database (still empty anyway) and can solve the installation problem.

- **Installing localised text files**

- After the MM8000 installation, the installation of a national language kit requires a separate procedure (see 007875 "MM8000 Localisation Guide").

The command to launch is the following:

MM8000 MP 2.31 - Localized Files Installation.bat

Please be aware of the following:

- The command batch has been renamed from the previous "MM8000 MP 2.3 - Localization Procedure.bat".
- The batch does not execute if launched just after the MM8000 installation (it stops indicating that "MM8000 is not available"). **In fact, the localisation requires the PC to reboot at least once after the MM8000 installation.**

5.2 Configuration

Cut/Copy/Paste not supported

Cut, Copy, and Paste commands are not supported in the Composer structure tree with one important exception, namely the maps, which can instead be copied and pasted.

→ This means that the tree structure should be carefully defined because it cannot be easily modified at later time.

Graphic tool: best practises for AutoCAD files:

- Use AutoCAD 2000 format;
- Use optimised files. In AutoCAD, before saving, use AUDIT and PURGE to clean the file, and execute a zoom extension to update the size;
- Do not use UCS (User Coordinate System);
- Performance in handling the AutoCAD files depends a lot on the PC hardware and on the number of AutoCAD layers. If you are not satisfied, try to address these issues, simplifying the drawing or providing a faster machine.

Graphic tool: best practises for bit-map files:

Convert BMP files to JPG (photos) or to GIF (schemas). This will considerably improve the performance.

Graphic tool: names of graphic maps

In Composer, names of graphic maps should never be longer than 50 characters.

Graphic tool: problem filtering AutoCad layers in metric maps

If used for metric maps, the AutoCad importing wizard erroneously notifies a problem when the dialog "CAD selection → Layer" is selected. The following message is displayed: "Error loading file <filename>" and the Autocad file is apparently not imported. Actually, if you then close and re-open the map, the AutoCAD image is shown properly, as it is present in the map in spite of the error message.

User groups

The user group list is pre-defined and no new group can be added. Also, some user group capabilities are fixed and cannot be modified.

→ See 006799 MM8000 ICC manual.

FDMNG server troubles

If any of the MM8000 folders are selected /open in the Windows Explorer during download, it can cause problems related to the file distributor process 'FDMNG'. If this occurs, FDMNG server task may not start up properly (red icon in the system supervisor browser), or the map pages may not display properly after logging in to the MM8000.

Should this happen, you need to run the "Empty_DB.bat" procedure and then download again.

→ See 006799 MM8000 MP2.31 ICC manual.

MT8000

When installed with MM8000 software, the Composer tools, even if enhanced with the MT8000 plug-in, cannot be used for downloading MT8000 terminals. Instead, if you install "Composer only", and add the MT8000 plug-ins, then you can download properly the terminals.

DMS7000 metafile for CZ10 and CZ12

If a subsequent import is required, then the control unit name should be the same original name or the import will not work.

Backup version





The Composer project backup files include the version of MM8000 used for the latest backup command. The version information is contained in the ZIP comment field, which can be shown by WinZip in the following way:

- 1 In WinZip 8.1, enable the comment option in "Miscellaneous options" → "Show comment when opening ZIP files".
- 2 In earlier WinZip versions, access the comment with the command "Actions" → "Comments".

Cannot use USB service key and old parallel keys at the same time

In certain cases (see table at p.10), two license keys can be used on the same machine to enable MM8000 and tools separately. Be aware that the old generation of keys (larger in size, see picture below) will not work properly when the USB key is also installed.

In such cases, you will have to remove the USB dongle (i.e. the service key used for enabling Composer) when you need the MM8000 to recognise the parallel key.

Model	Picture	Can it be used together with USB?	Customer Key and + Service Key
New model		Yes 	USB key can be used with no side effect on the parallel-port key.
Old model		No 	USB key must be removed in order to get the parallel-port key to work again.

Changing to a completely new configurations

When a new project is downloaded and it includes a complete new network configuration in comparison with the earlier download, the use of the Empty_DB.bat command is recommended.

→ See 006799 MM8000 ICC manual.

“Move” function in AlgoRex tool

The AlgoWork “move” function, which allows CC11 objects to be moved in the tree structure, **is not fully supported in MM8000 tools** (ref. #5521). In fact, the import procedure can treat this case but it operates by deleting and recreating the object in the MM8000 structure. This results in the previous links of the moved object being lost, e.g. a fire zone will disappear from its map or its reaction. You then have to configure the object again in maps and reactions.

CC11 AlgoRex EP7

Please be aware that:

- The CC11 does not report any information about CT11.
- The following structures are imported in the logical and not in the physical tree:
 - 1551 - Digital output;
 - 1552 - Digital output supervised;
 - 1560 - Internal horn;
 - 1561, 1564, 1565 - External horn;
 - 1562 attribute = RTFIRE – “Alarm” remote transmission channel;
 - 1562 attribute = RTFAULT – “Fault” remote transmission channel;
 - 1562 attribute = RTOTHER – “Other” remote transmission channel.

5.3 Functionality

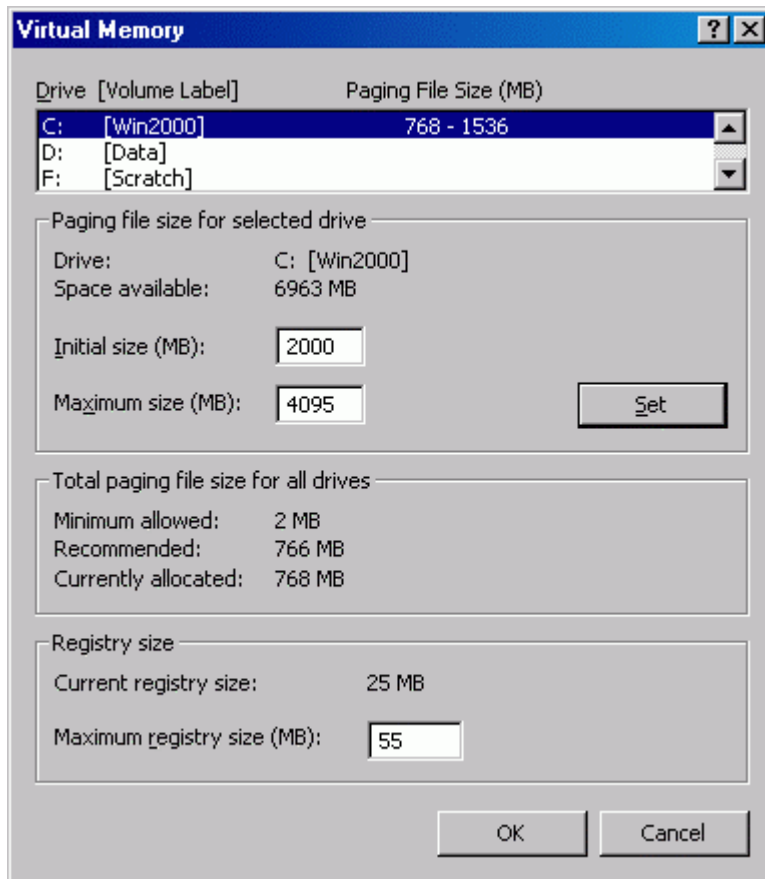
- **Composer open during runtime**
 - If Composer is left open when MM8000 runtime is active, it may cause problems to the log-out or switchover operations, which require a Windows logout. **We recommend you close Composer immediately after having used it for configuration.**
- **Automatic mode**
 - Automatic alarm treatment is supported only for fast treatment (not for assisted mode).
- **FEP stations require server when starting up**
 - Distributed configurations including FEP stations: when you start up a FEP station, you have to ensure beforehand that the MM8000 server is already up and running.
- **Fault conditions for multi-drop CF9000 units**
 - The communication fault for CF9000 units in multi-drop configuration may not always be reported correctly by MM8000. In fact, disconnecting the first unit on the bus results in a communication fault being announced on all the units on the line.
- **Cannot abort history restore**
 - Once in progress, the history restore procedure cannot be aborted. Trying to abort may result in the history browser hanging up when a new restore is executed at later time.
- **Low virtual memory events**

- Depending on the specific configuration and on the PC hardware characteristics, MM8000 software may use up the memory resources in Windows and cause the “Low virtual memory” error message to display.

Should that occur, you could **adjust the virtual memory size** (it actually refers to the size of the *paging* file where the operating system swaps on disk the active memory areas). Accessing the Windows menu with Administration rights, proceed as follows:

- Start → Settings → Control Panel → System → Advanced tab → Performance Options → Virtual memory “change” button.
- At this point, in the disk drive list that appear, select the Windows 2000 System disk driver (typically C:) and set the size values as follows:

	Client / FEP stations	Stand-alone / server stations
Initial size	1000 MB	2000 MB and more ⁽¹⁾
Maximum size	4095 MB	4095 MB



¹ Initial size may be extended up to 3000 MB in case low memory events still occur.

6 Documentation

This section provides an overview of what information is included in each of the documents that accompany MM8000 MP2.30.

General changes

For all new and updated documents, the release number on the title page will reflect the major release number (for example, 2.30 instead of 2.10, 2.20, etc.). The “About this document” section still provides information about when the document was last updated.

6.1 Sales documentation

Product Datasheet

A brief summary of the features provided by the MM8000, available architectures, and networks and subsystems supported.

Note: This has been updated to reflect the new networks and functionality in MP2.31.

System Description

This document is similar to the datasheet, but very much expanded, and more detailed. It describes the MM8000 system user interface functionality, product configuration, available architectures, and subsystems supported.

Note: This document has been updated to reflect the new features added in MP2.31. (See section 2, “What’s new in MP2.31” on page 4 for details.)

Sales Arguments

This is a preliminary version of the sales guide. For MP2.20 it includes only one chapter on sales arguments. It will be expanded for future releases.

Note: The sales guide is unchanged from 2.20.

Sales Presentation

This is a PowerPoint presentation that can be modified, or used as is to show potential customers what the MM8000 can do.

Note: The sales presentation is unchanged from 2.20.

Tender Specifications

This document is currently in the standard Siemens format, but it is designed for use and adaptation(s) by independent contractors responsible for selecting and managing the installation and upgrades of a security system for the final customer.

Note: The Tender Specifications document is unchanged from MP2.30.

Offer Template

This is intended as an aid for sales people in the preparation of initial and final offers.

Note: The offer template has been updated to include new features added in MP2.31.

6.2 Technical documentation

MM8000 Operation Manual

This manual is an operation guide, meant for final users.

Note: This document has been updated to reflect the new features (given at p.5) included in MP2.31.

MM8000 Installation, Configuration and Commissioning (ICC)

This guide is meant for commissioning engineers and technicians. The ICC guide contains information about system limits, and hardware and software requirements. It provides step-by-step procedures for installation and configuration of the MM8000. During configuration, this manual should be used in tandem with the DMS8000 Connectivity Configuration guide.

Note: This document has been expanded to provide more detailed guidance and tips based on field experience. In addition to being updated to reflect the changes made in 2.31, procedures for configuration of features are more complete, and the document provides more guidance about the workflow that should be followed during configuration.

The installation checklist at the end of the document is intended to be used as an aid in gathering information from the customer prior to beginning configuration.

MM8000 Localisation Guidelines

This guide provides assistance with the localisation of the MM8000 software, including information about using Catalyst.

Note: This document has been updated to reflect the new tools added in MP2.31.

Maintenance & Troubleshooting

This troubleshooting guide includes known problems encountered during and after installation configuration & commissioning coming from all DMS8000 products.

→ The previous MK8000 guide has been replaced by a general DMS8000 document that includes potential problems associated to MK8000, MM8000, and MT8000.

DMS8000 Connectivity Guide

Meant for commissioning engineers and technicians, the DMS8000 Connectivity Configuration guide has been created for use with all FSP-DMS products. Since the configuration process for networks and subsystems in Composer is the same for all products in the DMS8000 family, that part of the procedure is now in this document. It should be used in tandem with the MM8000 Installation Configuration & Commissioning guide.

In an effort to facilitate the use of these documents, there are a number of workflow checklists, both in the ICC and in the DMS8000 Connectivity Configuration guides.

Note: This document has been updated to reflect the new features in NK8000 (CDI-WAN) network and the support for Philips/Burle CCTV, and other minor modifications.

Release Notes

Note that unlike the other documents, which maintain the same edms number but change versions (i.e. 006799_a_en in MP2.20 become 006799_b_en in MP2.30), this document has a completely new number. The previous release notes will be maintained in edms so that upgrades over more than one release (for example MP2.20 to MP2.31) are easier to manage.

7 Customer support links & resources

7.1 MM8000

CD-IT support provides information on the Intranet site <http://www.cdi.cerberus.ch/support/supp-lmsn.asp>. A software troubleshooting guide is available at: <http://www.cdi.cerberus.ch/support/supp-trou.asp> (password required) or deliverable upon request.
Please note the new support mailbox: support-dms.it.sbt@siemens.com.

7.2 Microsoft

7.2.1 General support

General support about Microsoft Windows can be found at:
⇒ <http://support.microsoft.com/directory/>

The following links concern more specifically the Windows 2000 platform.

7.2.2 Windows 2000 professional workstation and server

Technical information, including deployment guides:
⇒ <http://www.microsoft.com/windows2000/default.asp>

Frequently Asked Questions (FAQs):
⇒ <http://www.microsoft.com/windows2000/support/issues/default.asp>

Hardware compatibility list:
⇒ <http://www.microsoft.com/windows2000/professional/howtobuy/upgrading/compat/default.asp>

Security issues:
⇒ <http://www.microsoft.com/technet/security/CurrentDL.aspx>

How to obtain Windows 2000 Service packs:
⇒ <http://support.microsoft.com/support/kb/articles/Q260/9/10.ASP>

7.3 Adobe Acrobat

To view the PDF document is necessary to install the program Adobe Acrobat Reader. You can find its free version at: <http://www.adobe.com/products/acrobat/readstep.html>

Siemens Building Technologies AG
Alte Landstr. 411
CH-8708 Männedorf
Tel. +41 1 - 922 6111
Fax +41 1 - 922 6450
www.sibt.com

Document no. **008091_a_en_--**
Edition 02.2004

MM8000 Technical Material
Section 1