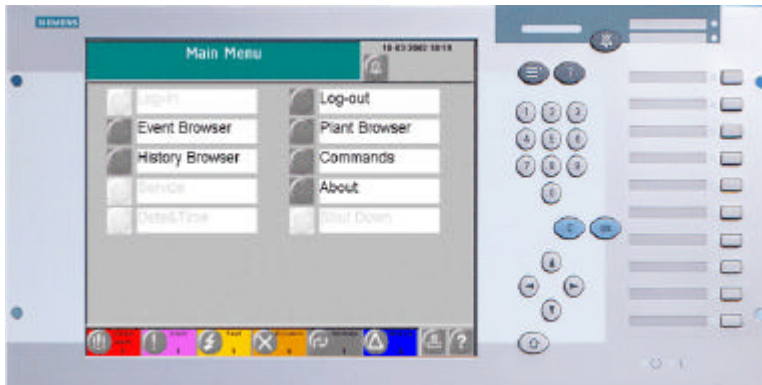


# SIEMENS



## MT8001 MP1.10 Management Terminal

Release notes

Data and design subject to change without notice. Supply subject to availability.

© Copyright by  
Siemens Building Technologies AG

We reserve all rights in this document and in the subject thereof. By acceptance of the document the recipient acknowledges these rights and undertakes not to publish the document nor the subject thereof in full or in part, nor to make them available to any third party without our prior express written authorization, nor to use it for any purpose other than for which it was delivered to him.

<b>1</b>	<b>Introduction.....</b>	<b>2</b>
<b>2</b>	<b>What's new in 1.10.....</b>	<b>3</b>
2.1	New approvals .....	4
2.2	New system limits, networks & subsystems.....	4
2.2.1	New system limits .....	4
2.2.2	Networks & connectivity supported.....	4
2.2.3	Subsystems supported .....	5
2.3	New tools included with MT8001.....	5
2.4	Changes to configuration procedure.....	5
2.5	Changes to functionality and features.....	6
2.5.1	User interface.....	6
2.5.2	CS11 AlgoRex.....	6
2.6	Changes to Documentation.....	7
<b>3</b>	<b>Migrating from MP1.01 to MP1.10 .....</b>	<b>8</b>
3.1	Flash-Disk update procedure from 1.01 .....	8
<b>4</b>	<b>Problems &amp; bugs.....</b>	<b>9</b>
<b>5</b>	<b>Localisation.....</b>	<b>10</b>
<b>6</b>	<b>Documentation.....</b>	<b>11</b>
6.1	MT8001 Product Binder.....	12
6.2	Sales documentation.....	12
6.3	Technical documentation.....	12
6.3.1	MT8001 documentation .....	12
<b>7</b>	<b>Support links &amp; resources.....</b>	<b>14</b>
7.1	MT8001.....	14
7.2	Microsoft .....	14
7.2.1	General support.....	14
7.2.2	Microsoft ActiveSync® .....	14
7.3	Adobe Acrobat .....	14

# 1 Introduction

---

This document applies to MT8001 MP1.10 and covers the following topics:

- Differences between this release and the last.....p. 3
- Migrating from a previous release.....p. 8
- Known problems & bugs.....p. 8
- Documentation.....p. 11
- Customer Support links and resources .....p. 14

## 2 What's new in 1.10

---

This section details the differences between MT8001 MP1.01 and MP1.10.

- New approvals ..... p. 4
- New system limits, networks & subsystems supported ..... p. 4
- New tools installed ..... p. 5
- Changes to Configuration procedure ..... p. 5
- Changes to functionality and features ..... p. 6
- Changes to Documentation ..... p. 7

## 2.1 New approvals

---

The major achievement in MT8001 MP1.10 has been the satisfaction of the requirements for a number of Approvals, both for fire and intrusion applications. The granted approval list includes:

- EN54-2 (VdS) (Germany / Fire)  
The test reports (from the VdS Approval Authority) that declare the MT8001 to be in compliance with the EN54-2 standards are now available. The final certificate of approval is expected by the end of November 2003.

EN54-2 (VdS) requirements mainly concern the presentation of events, the test procedure, and the internal software supervision.

- ULC (Canada / Fire)  
Approval is still pending, however all related requirements have been implemented into this SW-version. The final certificate of approval is expected by the end of 2003.

ULC requirements also address the presentation of events as well as the fault inputs and the ground fault handling.

- PIZ (Switzerland / Intrusion)  
Approval is still pending, however all related requirements have been implemented into this SW-version. The final certificate of approval is expected by the end of 2003.

PIZ required functions are mostly focused on the security aspect of user access procedures.

For each approval, a specific option setting has been included to enable the entire set of required functionalities.

## 2.2 New system limits, networks & subsystems

---

### 2.2.1 New system limits

MT8001 performances have been improved quite a lot in MP1.10:

- Enhanced number of supported physical elements (e.g. detectors): 8.000
- Improved performances on ISO1745 (CS11): 6 telegrams/sec
- Improved performances on CerCom/LON (CS6): 10 telegrams/sec

### 2.2.2 Networks & connectivity supported

The following control level configuration types are supported in MT8001 MP1.10:

- Cerloop – already supported in 1.01
- CerCom/LON - already supported in 1.01

The following network components are supported in MT8001 MP1.10:

- MK7022 – already supported in 1.01
- CK11 – **New!** (using ISO1745)

## 2.2.3 Subsystems supported

### Fire & Gas Subsystems

- CC11 AlgoRex EP5 – already supported in 1.01
- CC11 AlgoRex EP7 – **New! Limited to EP5 emulation** (see 2.5.2 on page 6)
- CZ10 – already supported in 1.01
- STT11 (Système de Télécommande et Télésignalisation) – already supported in 1.01
- CC60 – **New!**

### Intrusion Subsystems

- CS6 Guarto – already supported in 1.01
- CS440 – already supported in 1.01

### Other Subsystems

- DMS7000 units, including MF7033 – already supported in 1.01

## 2.3 New tools included with MT8001

---

Depending on the selected setup options, the MT8001 Installation disk can install the following applications:

- WW8000 Composer R2.03.
- MT8001 and subsystem Plug-ins.
- Microsoft® ActiveSync® V3.7.1 (English version).
- MT8001 Event History Analysis V1.0.

Details about all of these files can be found in the MT8001 Installation Configuration & Commissioning guide.

## 2.4 Changes to configuration procedure

---

- To configure the MT8001 MP1.10 you must use Composer version 2.03. This version of Composer can be used to configure MK8000 projects as well. MM8000 however, requires a different setup distributed on the MM8000 CD.  
**Note:** The MM8000 MP2.30 setup cannot be used for downloading MT8001 MP1.10. This will be resolved in the next version.
- This version does not allow you to download a project created in previous releases. You need to re-enter the configuration using the new Composer tools.
- A utility has been added to the tools to quickly convert the CC11 EP7 metafile and make it compatible with EP5 structure.  
    ⇐ See section 2.5.2, “CS11 AlgoRex “ on page 6.

## 2.5 Changes to functionality and features

---

### 2.5.1 User interface

Several new features have been added in MP1.10. In most cases, this has been driven by the approval requirements.

- The buzzer may be activated or not. Depending on the configuration; four options are now available:
  - Internal buzzer
  - External contact
  - Both
  - None
- You can specify in the configuration which category of events will activate the buzzer. The following options are now available:
  - All events
  - Unacknowledged Severe Alarm and Alarm
  - Unacknowledged Severe Alarm, Alarm, and Fault
- When the event list become empty, the main menu is shown.
- The help mode is now automatically disabled after a timeout of 10 sec.
- Event list can now be set to display as long as at least one event is present.

### 2.5.2 CS11 AlgoRex

#### Connectivity

In addition to the link via MK7022, the direct connection of CK11 is now possible using the same ISO1745 protocol.

#### EP7

AlgoRex EP7 can be used with the MT8001 although some limitations apply. Basically only the EP5 structures are supported. This usually covers the vital CC11 alarming functions. However, each EP7 application case must always be evaluated carefully.

CS11 EP7 provides two types of metafiles, for CC11 and CK11. The metafile for CK11 is not imported, and for this reason the CK11 cannot be completely supervised by the MT8001. The CC11 metafile requires some adjustments (physical tree objects have a different numbering in EP7) before being accepted by the MT8001 import tool.

The utility "EP5toEP7.exe" has been included in the MT8001 setup to easily adapt EP7 metafiles for MT8001 MP1.10.



## 2.6 Changes to Documentation

---

The document set included with the MT8001 has changed significantly for this version.

<b>EDMS</b>	<b>Document Name</b>	<b>Status</b>
006952	Product Data Sheets (En, Fr, De)	Updated
007286	Sales Guide	No changes from 1.01
007346	Sales Presentation	No changes from 1.01
007788	Tender Specifications	<b>New!</b>
007789	Release Notes M1.10	New (this document)
006647	Installation Configuration & Commissioning	Updated
007289	Maintenance & Troubleshooting	<b>New!</b>
007083	DMS8000 Connectivity Configuration	Updated
006611	MT8001 Operation Manual	Updated

## 3 Migrating from MP1.01 to MP1.10

---

Unfortunately, Composer projects generated in MP1.01 cannot be used with MP1.10. An entire new 1.10 configuration should be entered in the new Composer, reproducing what was done earlier for 1.01.

A number of technical difficulties forced us not to support an automatic upgrade. Please be informed that we are determined to support the upgrade for future releases.

### 3.1 Flash-Disk update procedure from 1.01

---

Existing MT8001 1.01 units can be updated to 1.01 to 1.10 following the procedure:

1. In Composer, get the new configuration ready.
2. Get the CD with new firmware files. Note the folder structure:

```
\NK.BIN
\RESTORE.FDF
\MT8001\GOON.OK
\MT8001\HISTORY\... (History archive)
\MT8001\COMMUNICATIONLAYER\... (Data and program files)
```

3. Connect to MT8001 with ActiveSync and browse the MT8001 file system
4. In the "Communication layer" folder, delete the file 'NeuronLoader.exe'
5. Restart the MT8001 and connect again.
6. If you do not need the current history archive, proceed as follows:
  - in the "Flash-Disk1" root, delete 'Restore.fdf' and 'NK.bin'
  - delete all files and subfolders in the "MT8001" folder
  - at that point, copy the entire new set of files of new 1.10 firmware into the MT8001
7. Instead, if you want keep the history data, following these steps:
  - in the "Flash-Disk1" folder, delete 'Restore.fdf' and 'NK.bin'
  - in the folder 'MT8001', delete the folder "CommunicationLayer", only
  - then, copy the new files 'Restore.fdf' and 'NK.bin' into the root "FlashDisk1"
  - copy the new folder "CommunicationLayer" into "MT8001"
8. Reboot the MT8001 and let the application start-up.
9. Proceed with the download your configuration to MT8001.

## 4 Problems & bugs

---

This is a list of known problems, limitations, and bugs in MP1.10. For troubleshooting, see the Maintenance & Troubleshooting guide. See also section 7, "Support links & resources" on page 14 for links providing useful information.

- MP1.01 configuration cannot be restored and downloaded in 1.10. Instead, the configuration should be entered again in 1.10.
- Printer is not supervised.
- Project backup file does not include the BMP files. These need to be copied separately.
- Composer 2.03 tools, when installed with MM8000 2.30, cannot download MT8001 1.10 projects. You will need to re-install the Composer 2.03 provided for MT8001 1.10.
- The same Composer environment installed for MK8000 1.30 can safely handle MT8001 1.10 projects, as long as the MT8001 tools are added using the Plug-in installer.
- If the History archive is enabled, performances in the user interface will decrease. This is because when an event has been reset or closed, the MT8001 has to record the history in permanent memory. This operation requires a significant amount of CPU time, so the unit will react more slowly to interface commands.

## 5 Localisation

---

### Localising with Alchemy Catalyst

MT8001 can be localised in all languages supported by Windows CE 3.0. The translation process is based on the specialised tool Catalyst, used to localise all FSP-DMS products. A Catalyst file (TTK) containing all MT8001 text in English is provided by FSP-DMS support in a MT8001 localisation toolkit.

### Catalyst software overview

Catalyst is an integrated translation environment by Alchemy Software (<http://www.alchemysoftware.ie/>). This application can extract (import) the text from XML and DLL files, and create a database file (TTK) that can be used for a comfortable translation, assisted by a guided interface, and management tools.

When complete, translated text can be exported back to DLL and XML files, which can be installed on a computer to test the localised software application.

### Catalyst editions

Catalyst is available in 4 different editions (see also the catalyst product list at <http://www.alchemysoftware.ie/products/productline.html>). These editions are:

- **Catalyst Quickship**  
Distributed free of charge and included in the MM8000 localisation toolkit. This edition allows you to translate the TTK text databases, but you cannot export text into DLL, and then test the localised MM8000. In order to check the results you need to ship the TTK files to FSP-DMS support, and wait for the exported DLL files. Catalyst Quickship can be downloaded at: <http://www.alchemysoftware.ie/quickship/>.
- **Catalyst Translator**  
This edition is not included in the MM8000 toolkit, but is available for a moderate charge. This software enables you to translate the TTK text databases, to export text into DLL, and to test the localised MM8000.
- **Catalyst Localiser**  
In addition to what is available in the Translator edition, Localiser provides more advanced tools for easy update of text versions, and more powerful tools for text activity management.



---

**Note:** We recommend you use the *Localiser* edition of Catalyst. Using Quickship (at no cost) will not permit you to immediately verify the localised software, possibly resulting in a long and costly localisation process.

---

- **Catalyst Developer**  
This edition also supports tools for creating Quickship TTK databases.

### Training on Catalyst

Using catalyst software is quite simple. Before using it extensively however, we recommend that you run some training sessions. These are available on the Internet at: <http://www.alchemysoftware.ie/tutorials/index.html>.

### **MT8001 text files**

The MT8001 files generated by Catalyst are:

- The file "MT8001RES409.dll", containing MT8001 terminal texts  
→ to be localised in Catalyst, exported and then copied into the MT8001 disk in the FLASH-DISK1\MT8001\COMMUNICATIONLAYER folder
  
- A set of XML files <nnnnnn.XML> (e.g.: 201301.XML), containing the point-state texts (e.g. NORMAL, ALARM, and so on)  
→ to be localised in Catalyst, exported and then copied into the Composer folders using the Localisation Procedure batch file (included in the localisation toolkit).
  
- A set of DLL files <stname.DLL> (e.g.STMT8001Res.DLL), containing the subsystem template texts  
→ to be localised in Catalyst, exported and then copied into the Composer folders using the Localisation Procedure batch file (included in the localisation toolkit).

## 6 Documentation

---

This section provides an overview of what information is included in each of the documents that accompany MT8001 MP1.10.

### 6.1 MT8001 Product Binder

---

The product binder contains all sales and technical documentation. This format reflects the new standard for FSP-DMS documents.

### 6.2 Sales documentation

---

#### **Product Datasheet**

This is a brief technical sales document to be used to introduce the MT8001 to potential customers.

**Note:** This has been updated to reflect the new subsystems and network solutions available in MP1.10.

#### **Sales Guide**

This document contains background information about the target market for the MT8001, potential pitfalls to avoid, and some sales arguments.

**Note:** The sales guide is unchanged from MP1.01.

#### **Sales Presentation**

This is a brief PowerPoint presentation that can be used as is, or modified for client presentations. It provides an overview of the MT8001 system.

**Note:** The sales presentation is unchanged from MP1.01.

#### **Tender Specifications**

This new document contains the technical specifications that are met by MT8001 MP1.10.

### 6.3 Technical documentation

#### 6.3.1 MT8001 documentation

---

##### **Release Notes**

This document outlines what's new and different about MP1.10, and how that affects your work.

##### **Installation Configuration & Commissioning**

The new ICC guide contains information about system limits, and hardware and software requirements. It provides step-by-step procedures for installation and configuration of the MT8001. During configuration, this manual should be used in tandem with the DMS8000 Connectivity Configuration guide.

**Note:** During commissioning and acceptance testing, the MT8001 ICC guide should be used with the Maintenance & Troubleshooting guide.

### **Maintenance & Troubleshooting**

This new troubleshooting guide includes known problems encountered during and after installation, configuration, and commissioning with Composer and MT8001.

### **DMS8000 Connectivity Configuration Guide**

This guide is shipped with all FSP-DMS products. It includes information about installing Composer, connecting and activating the hardware (dongle) key, setting up a new project, and configuring the networks and subsystems supported by DMS8000 products. This should be used in conjunction with the MT8001 ICC guide.

**Note:** This document has been updated to include new subsystems.

### **Operation Manual**

This manual describes how to operate the Management Terminal.

**Note:** This has been updated to reflect the new feature available in MP1.10.

## 7 Support links & resources

### 7.1 MT8001

---

CD-IT support provides information on the Intranet site

<http://www.cdi.cerberus.ch/support/supp-lmsn.asp>. A software troubleshooting guide is available at: <http://www.cdi.cerberus.ch/support/supp-trou.asp> (password required), or deliverable upon request. Please contact CD-IT support at: [support@cdi.cerberus.ch](mailto:support@cdi.cerberus.ch).

### 7.2 Microsoft

#### 7.2.1 General support

---

General support about Microsoft Windows can be found at:

⇒ <http://support.microsoft.com/directory/>

More interesting support links are also available at the Intranet site page:

⇒ <http://www.cdi.cerberus.ch/support/supp-link.asp>

Also, the following link concerns specifically Windows NT and Windows 2000 platforms.

#### 7.2.2 Microsoft ActiveSync®

In order to install the MT8001 plug-ins correctly, you must have installed ActiveSync on your PC first. If you do not have a copy of ActiveSync, you can download it from the following Microsoft® site:

<http://www.microsoft.com/windowsmobile/resources/downloads/pocketpc/activesync37.msp>

### 7.3 Adobe Acrobat

---

To view the MT8001 technical and operation manuals, you need to install the Adobe Acrobat Reader application. You can download a free version of this software from: <http://www.adobe.com/products/acrobat/readstep.html>.





Siemens Building Technologies AG  
Alte Landstr. 411  
CH-8708 Maennedorf  
Tel. +41 1 922 6111  
Fax +41 1 922 6450  
[www.sibt.com](http://www.sibt.com)

---

Document no. 007789\_a\_en  
Edition 11..2003

MT8001 Technical Material  
Section 1