

SIEMENS



MT8001 Management Terminal

Event History Analysis

Installation and operation

Data and design subject to change without notice. / Supply subject to availability.
© 2006 Copyright by
Siemens Switzerland Ltd

We reserve all rights in this document and in the subject thereof. By acceptance of the document the recipient acknowledges these rights and undertakes not to publish the document nor the subject thereof in full or in part, nor to make them available to any third party without our prior express written authorization, nor to use it for any purpose other than for which it was delivered to him.

About this document	2
1 Introduction	3
2 Safety regulations	4
2.1 Country-specific standards	4
2.2 Assembly, installation, commissioning and testing work	4
2.3 Modifications to the system design and the products	4
3 Installation	5
3.1 Installation requirements	5
3.2 Installation procedure.....	5
4 Transferring history files to your PC	7
5 Getting started	8
5.1 Data analysis - Overview	8
5.2 Application Overview	8
6 History Data Analysis	9
6.1 Updating user data.....	9
6.1.1 Adding a new user	10
6.1.2 Modifying existing user data.....	11
6.2 Importing event data	12
6.3 Selecting event criteria.....	13
6.4 Viewing Event Data.....	15
6.4.1 Viewing single event data	16
6.4.2 Viewing multiple event data	17
6.5 Deleting event data	18
7 Key to codes in the archive	19

About this document

What this manual is for

This manual is a guide to using the Event History Application that is included with the MT8001 Management terminal. It discusses the transfer of history log data from the MT8001 Management Terminal to a PC and the use of the tool for data analysis and management.

Who this manual is for

There are two primary groups that will use this manual. The first group is responsible for the one time installation of the product and periodic transfers of the history log data from the MT8001 to a PC. This group is expected to have moderate technical knowledge and adequate training and experience with the MT8001 system (hardware and software), and the ActiveSync® program.

The second group is responsible for reviewing and analyzing the event data on the PC. This group is expected to have knowledge and expertise in the field of security, familiarity with Microsoft Windows®, and the MT8001 Management Terminal.

Operational and safety regulations



Before groups of persons begin work on the system they must have read and understood the related documents, in particular Chapter 1 "Safety regulations".

Disregard of the safety regulations

Before they are delivered, products are tested to ensure they function correctly when used properly. Siemens disclaims all liability for damage or injuries caused by the incorrect application of the instructions or disregard of warnings of danger contained in the documentation. This applies in particular to:

- Personal injuries or damage caused by improper use and incorrect use;
- Personal injuries or damage caused by disregarding safety instructions in the documentation or on the product;
- Personal injuries or damage caused by poor maintenance or a lack of maintenance.

Reference documents

MT8001 Release Notes MP3.15	008604_a_en	09.2005	
MT8001 Operation Manual	006611_e_en	09.2005	
MT8001 Operation Quick Reference Guide	008088_a_en	09.2005	
MT8001 History Analysis Installation & Operation	006962_a_en	03.2003	
DMS8000 Connectivity Configuration Guide	007083_h_en	09.2005	
DMS8000 Graphical Map Configuration Guide	008904_a_en	09.2005	
DMS8000 Graphical Map Configur.Quick Refer.Guide	008906_a_en	09.2005	
WW8000 Composer Technical Manual	003183_j_en	09.2005	
WW8000 Composer Quick Reference Guide	008081_b_en	09.2005	

Modification index

Current version	Date	Comments
MT8001 MP3.15	09.2005	
MT8001 MP 1.10	01.2003	First version

1 Introduction

One of the important features of the MT8001 System terminal is its history log, which can be accessed via the history browser (as discussed in the MT8001 Operation Manual that came with your terminal) directly from the terminal.

The Event History tool provides an alternative to reviewing event log data directly from the MT8001 terminal. The Event History tool enables you to transfer the MT8001 history log data from the MT8001 terminal to a PC, and to analyze and manage data from there.

This document explains how to transfer data from the MT8001 event history log to your PC, and how install and use the Event History Analysis tool.

2 Safety regulations

This chapter describes the potential sources of danger and the relevant safety regulations applicable for the use of the Siemens Building Technologies products. Please read the work instructions as well as the chapter "About this document" thoroughly before beginning any work.

Danger Potential to Individuals

MT8001 units are powered with low voltage DC. While there are no specific safety regulations that apply to this device, modifications made to safety/security systems in general may present a risk to the safety of the individual performing those modifications, as well as to the equipment itself. As always, caution should be used when dealing with any power supply unit. Installation and modification of the MT8001 should only be performed by qualified technical personnel that have undergone specific training for this device.

2.1 Country-specific standards

The products are developed and produced in compliance with the relevant international and European safety standards. Should additional country-specific, local safety standards or regulations concerning project planning, installation and operation of the product apply in the place of operation, then these standards or regulations must also be taken into account in addition to the safety regulations mentioned in the product documentation.

2.2 Assembly, installation, commissioning and testing work

- Security-, fire- and third party systems or devices must only be activated in the presence of the responsible person.
- When work on management stations and management terminals is performed, the safety regulations of the connected sub-systems must be observed. This especially applies when switching-off system components.
- Inform people before testing of alarm devices; take the possibility of panic reactions into account.
- Inform the alarm and fault receiving stations connected to the system before carrying out the tests.

2.3 Modifications to the system design and the products

Modifications to a system or to individual products may cause faults or malfunctioning. Please request written approval from us and from the relevant authorities concerning intended system modifications and system extensions.

3 Installation

3.1 Installation requirements

For the Event History Analysis application, you will need:

- PC with a Pentium processor, at least 128 mb RAM.
- WinNT or Windows 2000 operating system

For data transfer from MT8001 to your PC, you will need:

- Microsoft ActiveSync
- ActiveSync cable
- Keyboard adapter (this is supplied in the MT8001 service kit, or can be built as specified in the MT8001 Technical Manual)

3.2 Installation procedure

The Event History Analysis can be easily installed by double-clicking the setup.exe file on the compact disc that was shipped with the MT8001, and following the instructions displayed during the setup procedure.

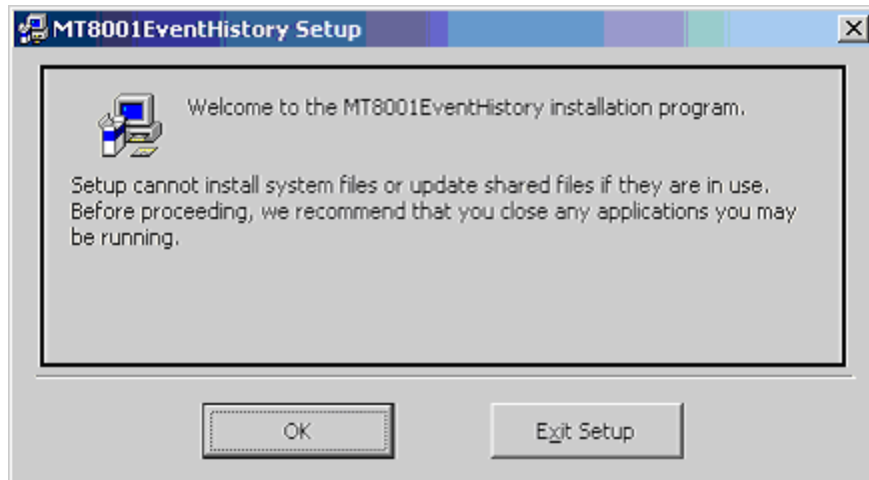


Fig. 1 Event History setup window

1. Verify that all other applications are closed and click OK.

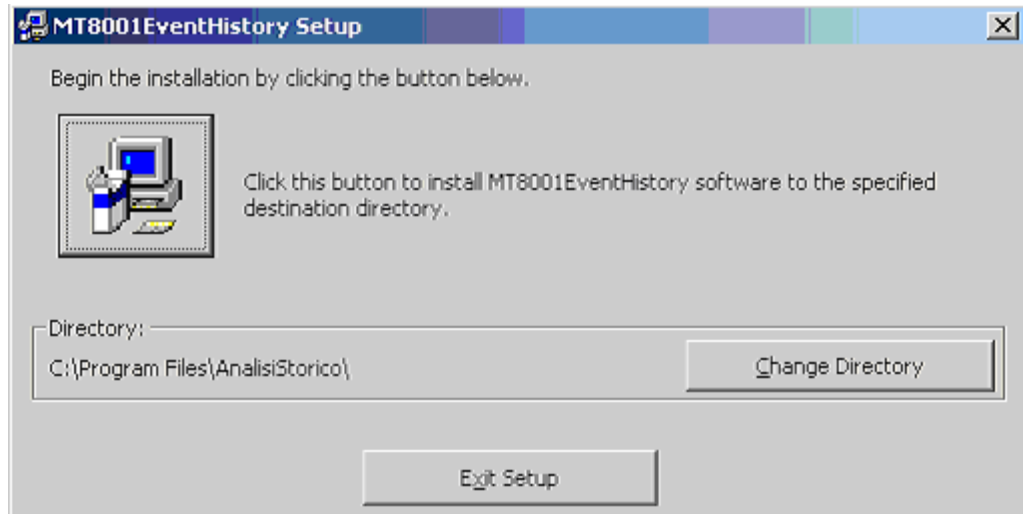


Fig. 2 Installation directory selection window

2. To change the directory in which the program will be installed, select the change directory button and choose the new location.

When ready, click the install icon in the left of the window.



→ The application is installed on your pc.

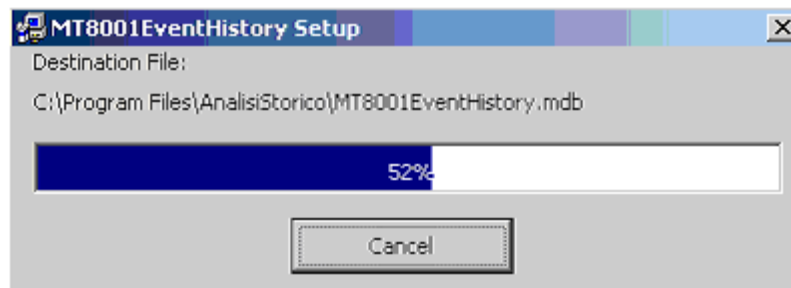


Fig. 3 Installation progress window

3. When the completed successfully message displays, select OK.

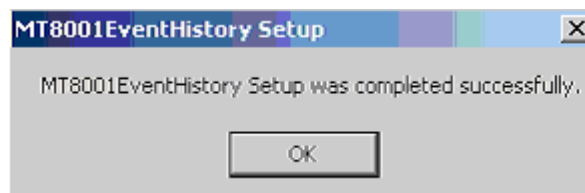


Fig. 4 Installation complete

4 Transferring history files to your PC

The transfer of the history files from the MT8001 to the PC should be performed by qualified personnel such as a computer technician or specialist.

The Event History Analysis tool pulls its data from the following folder on the PC:

→ 'Program files \ AnalisiStorico \ History_ArchiviPROTeREP'. *

(*note that 'Program files' is the default directory. If you chose a different destination directory when installing the application, look there instead of in 'program files'.)

Therefore, before the Event History Analysis tool can be used, the data must have been moved to this folder. Please note that this folder is created *automatically* the first time the Event History Application is opened.

If you regularly archive data in the MT8001, you may choose to transfer data from the MT8001 to a dedicated data archive folder on the PC as outlined in this procedure, then copy the archive to be reviewed into this folder. If, instead, data is being transferred from the MT8001 for immediate analysis only and doesn't need to be archived, it would be faster to transfer it directly to the folder.

To transfer the history files stored on the MT8001 terminal to the PC:

1. Following the ActiveSync / keyboard data transfer procedure (see MT8001 ICC manual, section 5.6.2 in MP3.15 edition, document n.006647_e_en), copy the directories 'Archive' and 'Current' from: My Computer\Flash-Disk1\MT8001\History (on the MT8001).
2. Paste them into the destination folder on the PC (the archive folder or 'Program files \ AnalisiStorico \ Installation directory\ History_ArchiviPROTeREP'.

5 Getting started

5.1 Data analysis - Overview

This is an overview of the data analysis process. Each step is detailed in its own section following this summary.

- 1. Open the Event History application.....p. 8
- 2. Update user data (optional).....p. 9
- 3.Import event datap.12
- 4.Select event criteriap.12
- 5.View resulting datap.15
- 6.Delete data (optional)p.18
- 7.Exit applicationp.18

5.2 Application Overview

Launch the Event History Analysis application

→ Start menu→ Programs→ MT8001EventHistory

Main Menu Screen

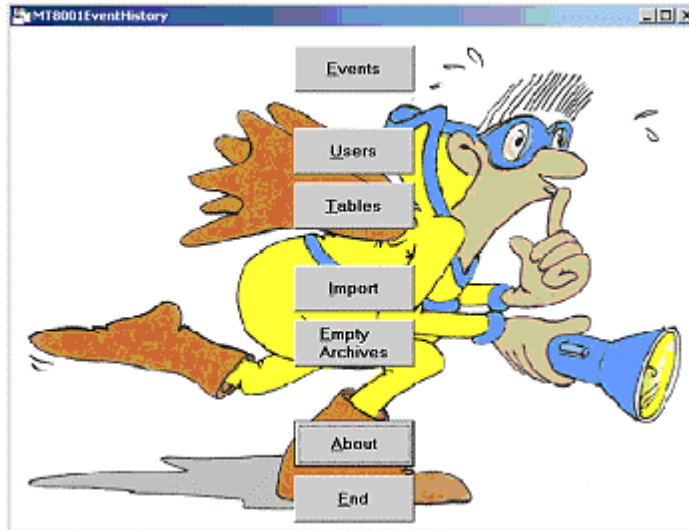


Fig. 5 Main menu window

- | | | |
|---|----------------|--|
| 1 | Events | Opens the query and report area. (all data analysis is done here) |
| 2 | Users | Enables you to update user information |
| 3 | Tables | Displays a key to the number codes used
(this is generally only used for troubleshooting) |
| 4 | Import | Loads event history data into the application |
| 5 | Empty Archives | Deletes the data that you loaded during import |
| 6 | About | Displays the version of the application |
| 7 | End | Closes the Event History application |

6 History Data Analysis

6.1 Updating user data

Each user in the MT8001 has a numerical id used for logging in which corresponds with a textual description (for example, 111 – John Smith, or 3 – Technician).

Data analysis is significantly easier when you see the name of the user rather than just their number. However, while user numbers are stored in the MT8001 Management Station, the user names are not. Therefore, before importing event data for analysis, you should verify that the MT8001 user list is up to date in the Event History application. If the user data isn't up to date, the event data will may not display the correct user name, or may not have a name associated with the number at all.

If data list shows '**...to be defined...**' in the user column, this is a sign that the user list is out of date. You will need to update the user list and re-import the data. Please note that this is not the only symptom of an out-of-date list. For example, if last month John Smith had the user ID 123 but has left the company and the new employee Robert Brown has been given 123 as his user ID, until this is updated, all of Robert Brown's actions will be shown as having been performed by John Smith.



The first time you use the application, you will have to create the user list by hand. After that you can update it periodically.

Opening the user update window

From the main window, select the 'user' button, (see figure on p. 8).

→ The Users screen displays with a list of existing users.

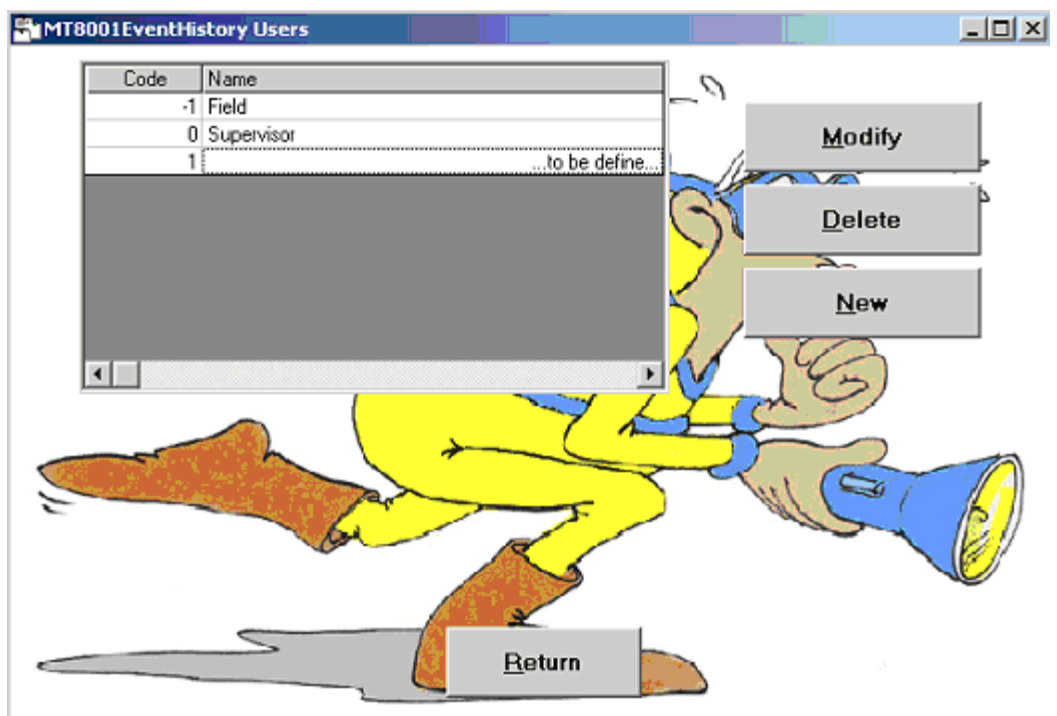


Fig. 6 User list

6.1.1 Adding a new user

1. From the user update window select new.
 - The fields for entering user data display at the bottom of the screen.
2. Enter the name of the user in the Name field
3. Enter the User ID in the Code field.
4. Select ok.
- The new entry is added to the list of users.
5. To go back to the main menu, please press the 'Return' button.



By default the following user is already defined: -1 Campo. This cannot be deleted but can be modified, or ignored.

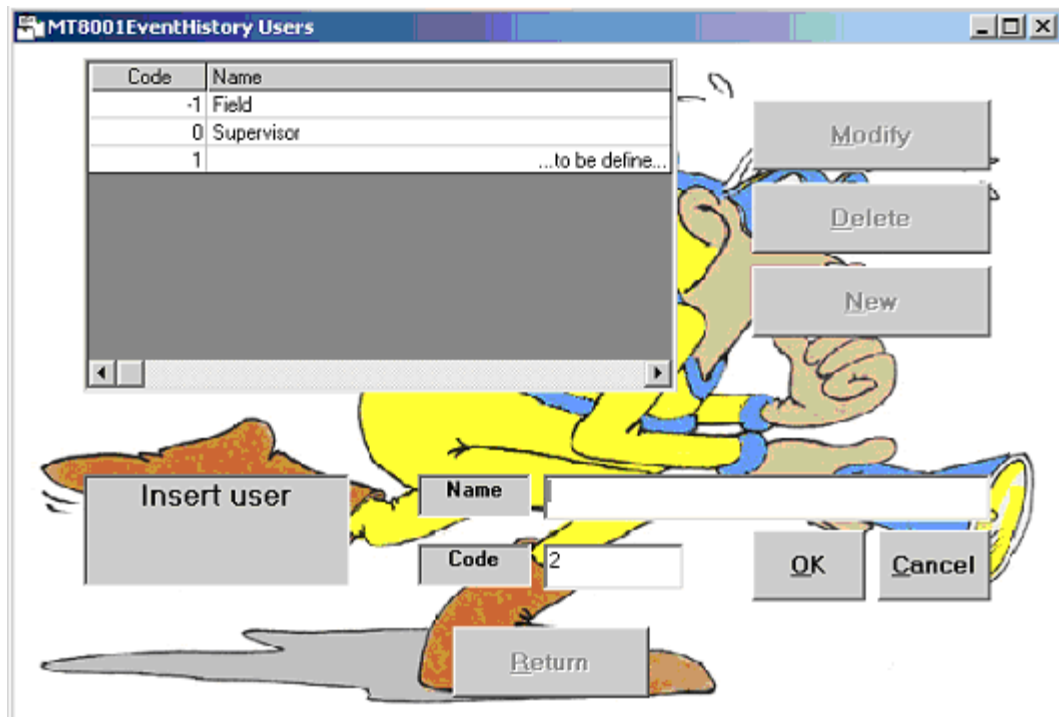


Fig. 7 Insert new user window

6.1.2 Modifying existing user data

1. From the list of users in the user update window, select the name of the user to be modified.
2. Select the Modify button.
 - The fields for modifying user data display at the bottom of the screen.
3. Modify the name of the user in the Name field or modify the User ID in the Code field.
4. Select ok.
 - The new entry is added to the list of users.
5. To go back to the main menu, please press the 'Return' button

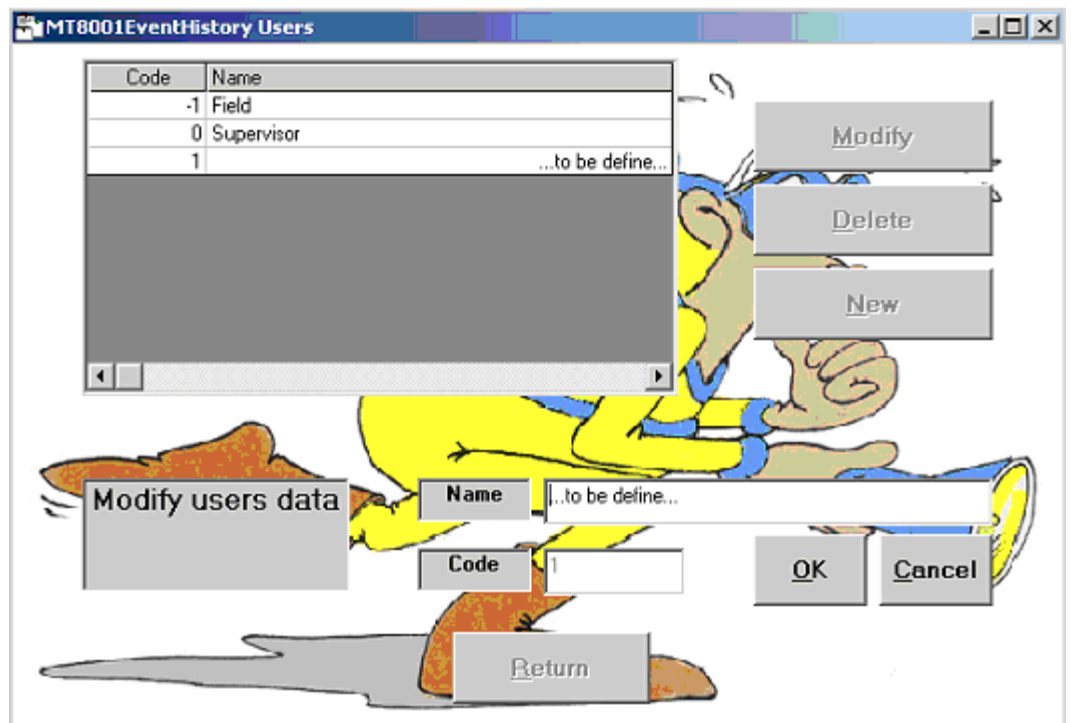


Fig. 8 Modify existing user window

6.2 Importing event data

Before proceeding to data analysis, you must first load the data into the Event History application. Data is always taken from the following folder:

→ 'Program files \ AnalisiStorico \ History_ArchiviPROTeREP'. *

(*note that 'Program files' is the default directory. If you chose a different destination directory when installing the application, look there instead of in 'program files'.)

Therefore, you should be sure that the data you want to review has been transferred to this folder before proceeding with this step.

One more thing to note is that if the last user did not empty the archives prior to exiting the application, that data will still be present in the Event History database. When you import new data it will be combined with the list of data that is currently loaded in the application. If you do not want to see the data from the last session, follow the procedure for deleting data from the application detailed in section 6.5 Deleting event data, on p. 18 prior to importing new data.

To verify whether old data has been left in the system look in the following file:

→ 'Program files \ AnalisiStorico \ History_ArchiviPROTeREP_IMPORTATI'. *

(*note that 'Program files' is the default directory. If you chose a different destination directory when installing the application, look there instead of in 'program files'.)

This folder should contain two empty folders: 'Archive' and 'Current'. If there are any additional files in any of these folders, the last data archive was not deleted by the last user.



At the end of the import procedure described in the next section, data contained in the directory 'History_ArchiviPROTeREP' is automatically transferred to 'History_ArchiviPROTeREP_IMPORTATI'.

Import data

From the main window, select the import button.

At the end of the import procedure the following window will be displayed:

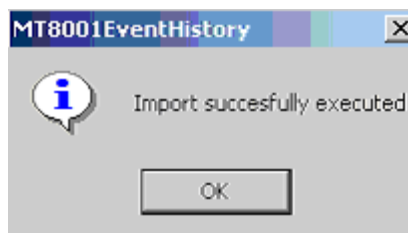


Fig. 9 Data loaded successfully message



If you receive a message similar to the following:

'User 3 not defined', your user list is not up to date. See the earlier procedure on updating users.

6.3 Selecting event criteria

Before reviewing event data you need to decide which types of data you are interested in. Once you have defined that, you can generate a report and review the data in that report.

Generating a report - Overview

1. From the Query window select the data that you would like to appear in each category:
 - a. Select a single criterion in the category (example, User 1 – John Smith), or
 - b. Select a range of criteria (example, June 10, 12:00 to June 10, 18:00), or
 - c. Select all criteria (do not select the button at all)
2. Click Apply
 - The report screen displays.

The first step is selecting the event criteria. For example, if you want to see only those events handled by John Smith, you would select his name from the user list. If you want to see all events that occurred between 2:00 and 18:00 on June 10, you would set that range in the time area. You can also set multiple criteria such as all events that occurred yesterday, were handled by John Smith, and related to the discipline of fire. Here you would set the user, time and discipline filters.

To get to the query window, select the Events button from the main window.

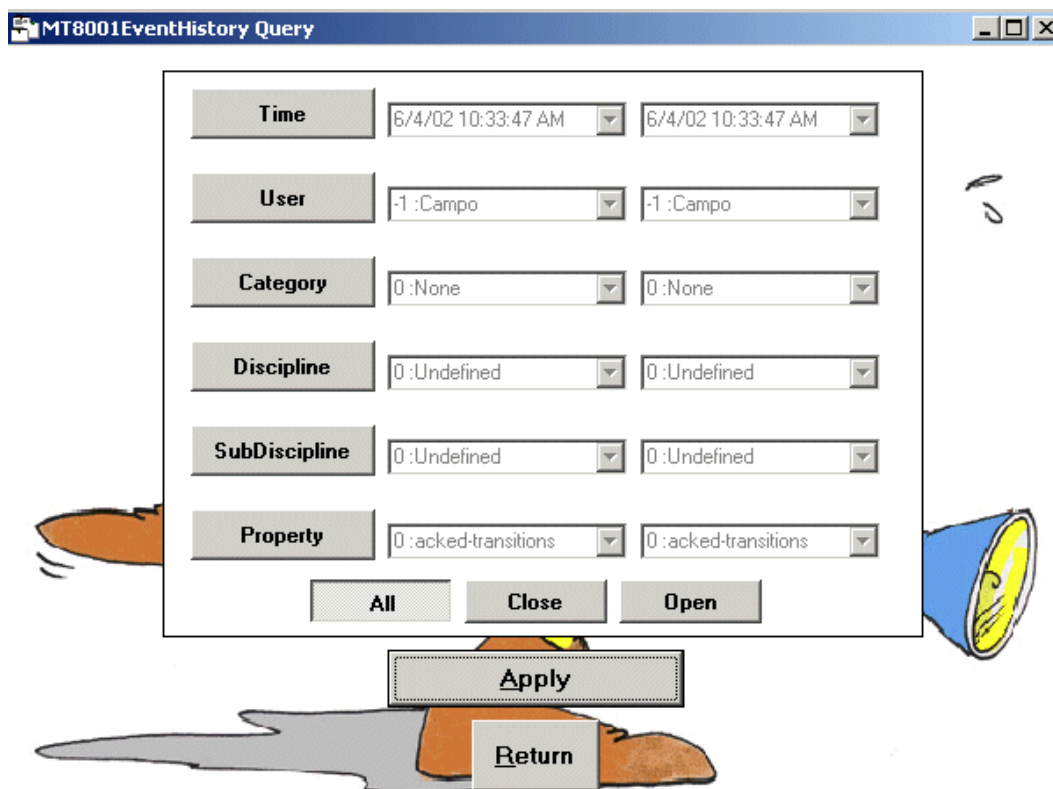


Fig. 10 Event criterion selection window (query)

To select a single criterion

For example, to view only severe alarms, you would perform this for 'Category'.

1. Select the button that you want to filter for (for example, 'Category').
→ The fields change from grey (inactive) to black (active).
2. Set both fields to the criterion you want to display (for example, Severe Alarm).

To select a range of criteria

For example, to see only those events that occurred within a limited period of time, you would select a range for 'time'.

1. Select the button that you want to filter for (for example, 'User').
→ The fields change from grey (inactive) to black (active).
2. Set the left field to the start of the range, set the right field to the end of the range (for example, June 10, 2:00 and June 10, 18:00).

To select all types of events

For example, to see all event disciplines, you would follow this for Discipline.

1. Do not select any buttons or modify any fields (they should be greyed out) and click apply.

To view all events

If you want to see every event in the database, you do not need to change anything or set any filters. When you open the Event window, all events are already selected by default. Just select Apply.



The Open and Close buttons at the bottom of the window are not used. The All button should be automatically selected by default. There is no need to change anything here.

6.4 Viewing Event Data

The Table screen shows a list of the events that fall into the categories you set in the last step. The total number of events in this report is shown in the upper left corner of the screen.

From here you can:

- Review the details about a single event. See section 6.4.1 Viewing single event data, p. 16
- Review statistical data for multiple events. See section 6.4.2 Viewing multiple event data, p. 17

The screenshot shows a window titled "MT8001EventHistory Table" with a toolbar containing buttons for "349", "Protocol", "Report", "All", and "Statistics". Below the toolbar is a table with the following data:

	Time	Event	State	Description
1	6/4/02 10:34:00 AM	145355	Close	Security Server, Users, Technical User : LogStatus
2	6/4/02 10:34:00 AM	145355	Close	Security Server, Users, Technical User : LogStatus
3	6/4/02 10:45:42 AM	145356	Close	Point Server : ConfigurationUpdate
4	6/4/02 10:49:41 AM	145357	Close	MK-7022 Subsystem #1, Cerloop Driver : Disconnected
5	6/4/02 10:49:41 AM	145357	Close	MK-7022 Subsystem #1, Cerloop Driver : Disconnected
6	6/4/02 10:49:41 AM	145360	Close	DZP001.TXT, MK-7022 Subsystem #1, Cerloop Driver : Disconn
7	6/4/02 10:49:41 AM	145360	Close	DZP001.TXT, MK-7022 Subsystem #1, Cerloop Driver : Disconn
8	6/4/02 10:49:41 AM	145358	Close	DCR001C, CK11 #1, MK-7022 Subsystem #1, Cerloop Driver : [
9	6/4/02 10:49:41 AM	145358	Close	DCR001C, CK11 #1, MK-7022 Subsystem #1, Cerloop Driver : [
10	6/4/02 10:49:41 AM	145359	Close	CK11 #1, MK-7022 Subsystem #1, Cerloop Driver : Disconnect
11	6/4/02 10:49:41 AM	145359	Close	CK11 #1, MK-7022 Subsystem #1, Cerloop Driver : Disconnect
12	6/4/02 11:02:59 AM	145361	Close	Security Server, Users, Technical User : LogStatus
13	6/4/02 11:02:59 AM	145361	Close	Security Server, Users, Technical User : LogStatus
14	6/4/02 11:04:09 AM	145362	Open	DZP001.TXT, Logical tree, Users, UTENTE 1 : DefaultCode
15	6/4/02 11:04:10 AM	145363	Open	DZP001.TXT, Logical tree, Users, UTENTE 2 : DefaultCode
16	6/4/02 11:04:11 AM	145364	Open	DZP001.TXT, Physical tree, STAMPANTE : Off
17	6/4/02 11:04:19 AM	145365	Open	DCR001C, Physical Tree, stazione CBus nr.1, LINEA ANALOGII
18	6/4/02 11:04:19 AM	145365	Open	DCR001C, Physical Tree, stazione CBus nr.1, LINEA ANALOGII
19	6/4/02 11:04:20 AM	145366	Open	DCR001C, Physical Tree, stazione CBus nr.1, LINEA INTERAT
20	6/4/02 11:04:20 AM	145366	Open	DCR001C, Physical Tree, stazione CBus nr.1, LINEA INTERFRAT

At the bottom of the window, there is a "Return" button.

Fig. 11 Event data report window (query result)

6.4.1 Viewing single event data

You can view the protocol or the report associated with an individual event, or you can view both at the same time.

1. From the top of your screen, select the Protocol, Report or All button ('All' shows both protocol and report together).
2. From the list, scroll to find the event you are interested in. When you select it, the protocol, report or both will display.
3. To view another event, simply select it and the details shown will change.
4. To change between protocol, report and all, click directly on one of them and then reselect the event you would like to review.

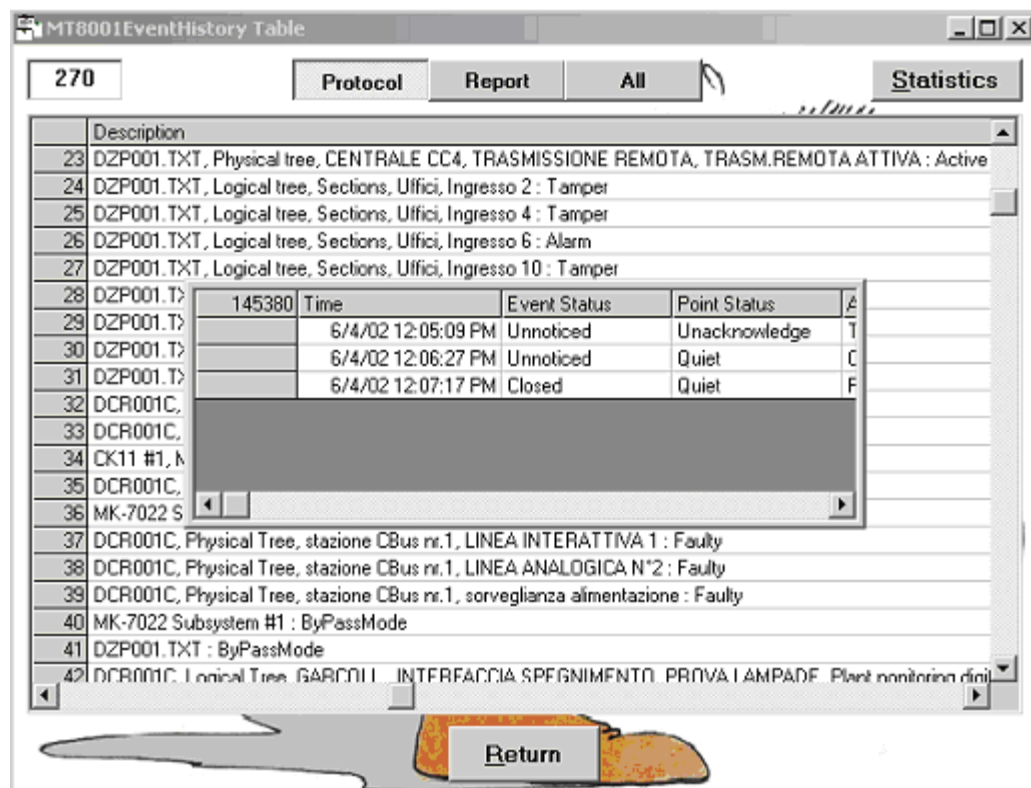


Fig. 12 Event protocol pop-up window

6.4.2 Viewing multiple event data

The total number of events in your report is shown in the upper left of the Table window.

You can view the number of events per category grouped by time, category, discipline, sub discipline and property (cause of alarm) contained in your current report.

The screenshot shows a window titled "MT8001EventHistory Table" with a "Statistics" button in the top right. The main table displays event data with columns for Time, Event, State, and Description. A statistics sub-table is overlaid on the main table, showing event counts by category.

Time	Event	State	Description
1	6/4/02 10:33:47 AM	145353	Close CZ10 N°1, MK-7022 Subsystem #1, Cerloop Driver : Disconnect
2	6/4/02 10:33:47 AM	145347	Close BAT.D-CHAMBRES, MK-7022 Subsystem #1, Cerloop Driver : C
3	6/4/02 10:33:47 AM	145352	Close Dms Subsystem #1, MK-7022 Subsystem #1, Cerloop Driver : D
4	6/4/02 10:33:47 AM	145351	Close CK11 #1, MK-7022 Subsystem #1, Cerloop Driver : Disconnect
5	6/4/02 10:33:47 AM	145350	Close ROCKRO, CK11 #1, MK-7022 Subsystem #1, Cerloop Driver : C
6	6/4/02		
7	6/4/02		
8	6/4/02		
9	6/4/02		
10	6/4/02		
11	6/4/02		
12	6/4/02		
13	6/4/02		
14	6/4/02		
15	6/4/02 11:02:59 AM	145361	Close Security Server, Users, Technical User : LogStatus
16	6/4/02 11:04:09 AM	145362	Open DZP001.TXT, Logical tree, Users, UTENTE 1 : DefaultCode
17	6/4/02 11:04:10 AM	145363	Open DZP001.TXT, Logical tree, Users, UTENTE 2 : DefaultCode
18	6/4/02 11:04:11 AM	145364	Open DZP001.TXT, Physical tree, STAMPANTE : Off
19	6/4/02 11:04:19 AM	145365	Open DCR001C, Physical Tree, stazione CBus nr.1, LINEA ANALOGI
20	6/4/02 11:04:20 AM	145366	Open DCR001C, Physical Tree, stazione CBus nr.1, LINEA INTERFRAT

Type	Category	S(Category)
1	Advisory	13
2	Anomaly	64
3	non Default Mode	7
4	Exclusion	6
5	Fault	33
6	Alarm	72
7	Severe Alarm	75

Fig. 13 Statistics window (displaying number of events that occurred, by category)

To view statistics:

1. Generate a report that includes the criterion you would like to be included in the count.
2. From the report page, select the Statistics button.
3. In the Group by window, select the type of data you would like to have counted, then select OK.
 - The list of data displays.

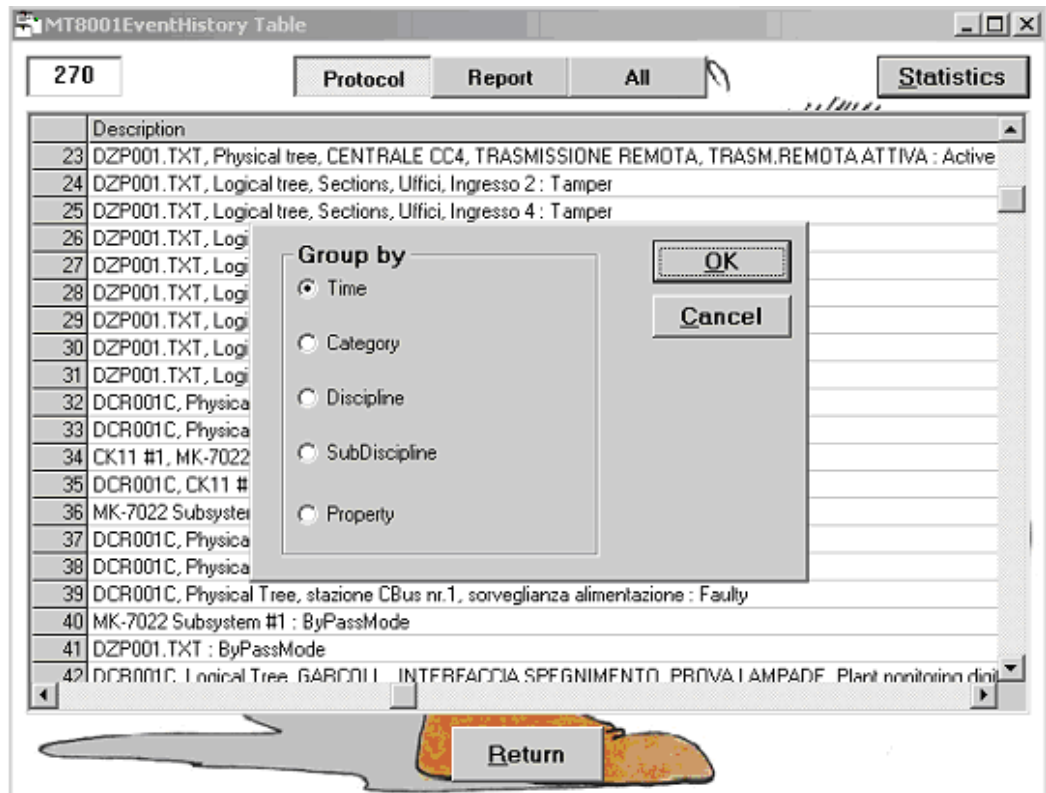


Fig. 14 'Group by' selection window

Example procedure – Checking the number of events caused by tampers

To see how many alarms were triggered by tampers in January:

1. From the Query window, set the filter to 12:00 January 1 to 23:59 January 31. Leave all other buttons unselected (so that all events that occurred in January will be included).
2. Click Apply to generate the report.
3. From the report page, select the Statistics button.
4. From the Group by window, select property.
5. Click OK.
 - The list of event triggers is displayed.
6. Scroll down to see the Tamper field and check the number to the right.

6.5 Deleting event data

Deleting the data contained in the archive is optional. However, keep in mind that new data that is imported will be integrated into the list of data that is currently loaded. If you prefer that this doesn't happen, you should delete the data when you have finished.

1. To delete all the data contained in the database, select the Empty Archives button from the main window.
2. Select yes in the confirmation window.
 - The data is deleted.

7 Key to codes in the archive

This is not a commonly used feature but can be important when a problem is encountered with the data. If a number displays without a textual description, the corresponding text can be found here. Further, this contains a complete list of all possible event criteria (except for users, which is maintained separately and discussed in an earlier section of this manual.)

To view the key

1. Select the Tables button from the main screen.
→ The Tables screen displays
2. Click on the tab (event status, point status, action, category, discipline, subdiscipline, or property) to view the codes associated with that group.

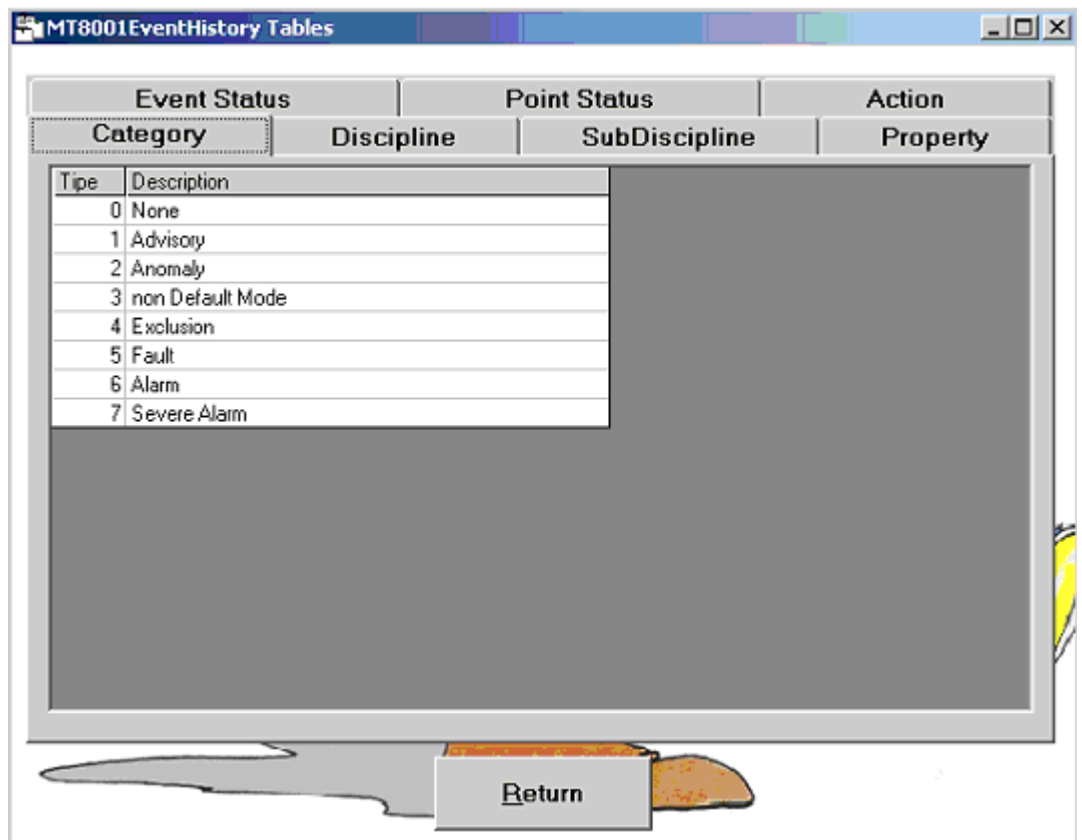


Fig. 15 Key to codes associated with event data

Siemens Switzerland Ltd
Building Technologies Group
International Headquarters
Fire Safety & Security Products
Gubelstrasse 22
CH-6301 Zug

Tel +41 41 724 24 24
Fax +41 41 724 35 22
www.sbt.siemens.com