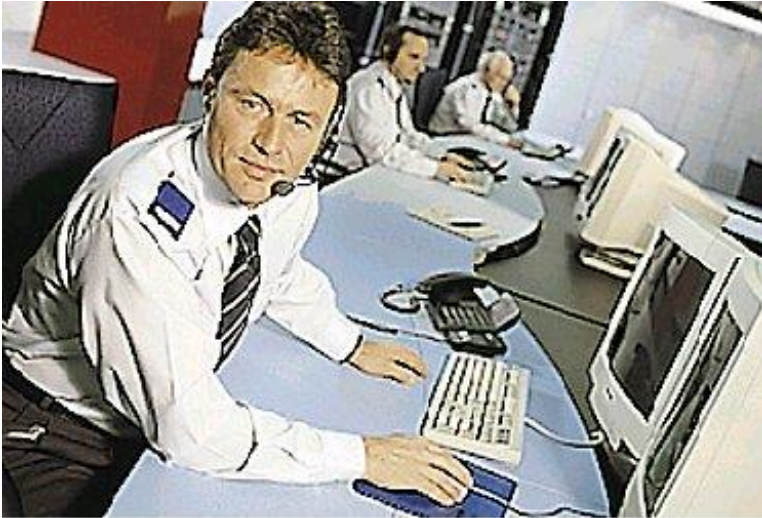


# SIEMENS



## **MM8000 MP3.10-01** **Management Station** Product Release Notes

Data and design subject to change without notice. / Supply subject to availability.  
© 2005 Copyright by  
Siemens Building Technologies AG

We reserve all rights in this document and in the subject thereof. By acceptance of the document the recipient acknowledges these rights and undertakes not to publish the document nor the subject thereof in full or in part, nor to make them available to any third party without our prior express written authorization, nor to use it for any purpose other than for which it was delivered to him.

## Table of contents

<b>1</b>	<b>Introduction .....</b>	<b>4</b>
<b>2</b>	<b>What's new in MP3.10-01 .....</b>	<b>5</b>
2.1	New functions.....	5
2.1.1	Graphic maps .....	5
2.1.2	Composer client.....	5
2.1.3	F12 key .....	5
2.2	Networks & subsystems supported.....	6
2.3	Bug correction .....	7
2.3.1	Corrections in MP3.10 .....	7
2.3.2	Corrections in MP3.10-01 .....	9
2.4	Installation and configuration procedures .....	12
2.4.1	Installation .....	12
2.4.2	Composer client settings .....	12
2.5	MP3.10 documentation errata.....	15
<b>3</b>	<b>Migrating from MP2.xx releases .....</b>	<b>16</b>
3.1	Migrating from MP2.10/MP2.20/MP2.30.....	16
3.2	Migrating from MP2.31.....	16
3.2.1	Update procedure log.....	17
<b>4</b>	<b>Known issues in MP3.10-01 .....</b>	<b>19</b>
4.1	Installation .....	19
4.2	Configuration.....	20
4.3	Functionality .....	22
<b>5</b>	<b>Customer support links &amp; resources.....</b>	<b>23</b>
5.1	MM8000 .....	23
5.2	Microsoft.....	23
5.2.1	General support.....	23
5.2.2	Windows 2000 .....	23
5.2.3	Windows XP .....	23
5.3	Adobe Acrobat .....	23

# 1 Introduction

---

These release notes provide information on the latest MM8000 MP3.10-01 software delivery. In this release, MM8000 has been further enhanced with new functions and number of bug corrections.

This document covers the following topics:

Differences between MP3.10-01 and the previous market package.....p. 5  
Information about how to migrate to 3.10-01 from the previous releases .....p. 16  
Known issues in MP3.10 .....p. 19  
Support links & resources.....p. 23

## 2 What's new in MP3.10-01

---

This section presents the differences between the new MM8000 MP3.10 and the previous MP3.10 and MP2.31 versions.

### 2.1 New functions

#### 2.1.1 Graphic maps

---

A new version of the graphical library has been released, which can solve a number of current difficulties (see bug correction list below) as well as provide with the following new benefits:

- 1 It is **no longer mandatory to choose the CAD layers during CAD import phase**. It is possible to make the CAD layers visible or not at any time, from the CAD properties window that automatically displays when the CAD is inserted or, at any subsequent time, by right clicking on the CAD object.
- 2 During CAD import phase, in the "CAD Selection" window, it is now **possible to choose the CAD layout** among those available in the original CAD file, if any. As in previous release, the layout named "model", always present, is selected by default.
- 3 When you import a CAD file into a map, **the background colour of the CAD file is set to white by default**, whereas in previous version it was transparent. Note that it is possible to change the background colour, in any moment, by using the CAD properties window.

#### 2.1.2 Composer client

---

This is a new function that allows to set-up a client station that can also operate remotely on the Composer configuration. Note that **one Composer application at a time (local or remote client) can operate**. In order to install such a client station, you have to install MP3.10-01 on a machine where MM8000 MP 3.10 Stand-alone or Server (not client!) was previously installed. **The machine shall be changed into a Client machine** for both MM8000 and Composer. During the installation the name on the Server machine shall be required.

#### 2.1.3 F12 key

---

F12 function key can now stop the buzzer or audio message.

## 2.2 Networks & subsystems supported

---

### System architectures

- Stand-alone station.
- Client/Server.
- Client/Server/FEP.
- Configuration station.
- Configuration Client/Server - **New in MP3.10-01.**

### Network configuration types

The following network configuration types are supported:

- Cerloop – same as 2.31.
- CDI-Net – same as 2.31.
- NK8000 – *New functions in MP3.10: interactions, service web server.*

### Network components

The following network components are supported:

- MK7022 (ISO1745/Cerloop) – same as 2.31.
- CK11 (ISO1745) – same as MP2.31.
- FG700A (ISO1745) – *New in MP3.10.*
- GW20 and GW21 (CMSDL/CDI-Net) – same as 2.31.
- NK822x over serial line – same as 2.31.
- NK822x over LAN/WAN – same as 2.31.

### Subsystems

The following application subsystems are supported:

- CS11 AlgoRex® EP7 – same as 2.31.
- CS11 AlgoRex® EP5 – same as 2.31.
- FG700A – *New in MP3.10.*
- STT11 (système de télécommande et télésignalisation) – same as MP2.31.
- CZ10 – same as MP2.31.
- CC60 – same as MP2.31.
- CS440 – same as MP2.31
- CS4 – same as MP2.31
- CZ12 – same as MP2.31.
- CS6 Quarto - *New in MP3.10: full support for CS6 MP3+.*
- SI410/420 Sintony – *New in MP3.10.*
- DMS7000 units, including MM- and MF-7033 – same as MP2.31.
- Simatrix CCTV (16-4; 64-8; SYS) – *New functions in MP3.10.*
- CF9000 I/O subsystem (DF8020/8040/8045/8046) – same as MP2.31.
- Philips/Burle CCTV (LTC 8xxx) – same as MP2.31.

## 2.3 Bug correction

---

This section presents the list of corrected bugs in MP3.10 and in MP3.10-01 in comparison with previous MP2.31-02.

### 2.3.1 Corrections in MP3.10

---

#### Installation

- 5560 The MM8000 folder (typically C:\MM8000) previously needed to be manually removed. It is now automatically deleted before re-installing the software.
- 
- 5648 Before re-installing MM8000 (during installation), previous user accounts (MM8000\_proc, Dixie, etc.) are now removed in order to clean up and allow any new security settings.
- 

#### Fire control units

- 4896 Composer did not check that links between detectors and zones were established within the same CZ10 only. Links across different units are now forbidden.
- 
- 5131 Customer texts for element-level (detectors) are not supported by the import procedure.
- 
- 5619 CT11 and CI11 objects have been removed from the CS11 configuration because they are not needed (CI11 can be replaced by CC11). However, older projects that include these objects are still supported.
- 
- 5675 The CS11 EP7 'Warning' physical property used to be erroneously propagated as Advisory; it is now a Pre-alarm, as in the CS11 EP5.
- 

#### Intrusion control units

- 5647 A version check has been added to the CS4 import procedure. Versions up to version 7 are accepted; whereas versions from 8 on are refused (they actually belong to CS440 units).
- 
- 6034 CS4 zones configured as "Fire" application were not properly handled by MM8000 and the alarm was not generated (also available for MM8000 MP2.31-02, see hot-fix #8 – contact customer support).
- 
- 6036 The Bolt Open property used to be erroneously propagated as a Burglary Alarm; it is now an Advisory (also available for MM8000 MP2.31-02, see hot-fix #8 – contact customer support).
- 
- 5865 CS6 re-import procedure used to fail if a zone was removed in the new metafile (also available for MM8000 MP2.31-02, see hot-fix #8 – contact customer support).
- 
- 5941 In certain configurations requiring extended ASCII character sets, some texts were not properly imported into MM8000 configurations (also available for MM8000 MP2.31-02, see hot-fix #8 – contact customer support).
- 
- 6055 MM8000 did not import the I/O device objects when at least two of them were present in the CS6 metafile (also available for MM8000 MP2.31-02, see hot-fix #8 – contact customer support).
- 

#### Alarm printout

- 5539 Printouts related to points in the geographical tree used to have problems and are now OK.
- 
- 5621 Alarm printout step was not available for manual operations when in free treatment mode.
- 
- 5622 Multi-page printout attachments: 1<sup>st</sup> page used to be printed, only.
-

- 5623 Alarm printout could not be set as automatic step when in free treatment mode.
  - 6037 In alarm printouts, date & time format could not be adjusted according to the Windows regional settings options.
- 

### **Plant browser**

- 5760 Runtime error used to occur in the plant browser if a property page was left open while treating a newly arrived event.
- 

### **History browser**

- 5222 Inconsistent header has been fixed in history printed reports.
  - 5556 After the first specific selection in the "where" section of the history query form, the browser failed to store subsequent locations.
  - 5557 In the "when" section of the history query form, the browser failed to store the latest date and time settings.
  - 5582 Troubles occurred when users at level 2 (Advanced Operator Groups) tried to change and then run system history queries.
  - 5605 In the history report grid, the browser failed to store the latest column grouping setting.
  - 5858 In history reports, wrong references to deleted queries have been removed.
- 

### **Stressing conditions**

- 5273 Performances have been improved in the event list management, particularly when the list contains over 500 events.
  - 5479 User interface problems occurring with a continuous sustained traffic (over 4 msg/sec) have been resolved.
- 

### **PAK Manager and license management**

- 4828 Improvements in the message text displayed in case of insufficient license (physical points or client stations).
  - 5261 Upon a complete deletion, the PAK manager failed to clear the licensing codes in the system registry. This used to prevent the demo mode from running.
  - 5291 MM8000 used to take one floating license for advanced event treatment even for stations not enabled for it.
- 

### **External applications**

- 5627 Troubles used to occur in launching the Address book application from MM8000 on PCs running a dual operating systems setting.
  - 5614 The working folder of external applications used to be fixed to C:\WINNT\System32: this could prevent certain applications from working properly. It is not set to the folder where the application is launched.
- 

### **Composer tools**

- 5211 Downloading a very different configuration used to create difficulties (previously solved by using the Empty\_DB batch).
  - 5370 Problems in decoding and displaying the NK822x log file (eeprom.log) have been resolved.
  - 5564 Composer could hang after repeated "Get Status" commands to NK822x units; it works properly now.
  - 5590
  - 5631 Composer now checks for the MM8000 server activation before starting. If servers are not running, a specific message appears.
-



5666 In the Composer tool, an error occurred when generating a 'Reaction to Points' export and a point included more than one reaction.

---

### Graphic tool

5109 Custom colour palette used not to be saved with a map.

---

5116 In MM8000 graphic objects, unexpected property changes have been removed when using the property form.

---

5200, Improvements in the polygon and polyline tools.

5201

---

5208 Improvements in the text resizing control.

5416

---

5210 Arrow keys can now nudge the selected object on the maps.

---

5417 Inconsistencies have been resolved between configuration tool and runtime in handling text objects.

---

5570 Difficulties resolved about display order of multiple depths.

---

5756 AutoCAD 2004 DWG/DXF files are supported.

→ See further updates in MP3.10-01.

---

### Line Monitor

5375 Messages from unknown (not configured) devices are now listed by the Line Monitor.

---

## 2.3.2 Corrections in MP3.10-01

---

### Fire control units

6298 An erroneous consistency check included in the MP3.10 may prevent certain CC11 metafiles from being imported. The check is related to the uniqueness of relationships between logical and physical objects.

The CC11 AlgoRex could however have different elements in the logical tree linked to the same physical element.

MP3.10-01 allows logical objects of different nature (e.g.: a detector and an actuation element) to be linked to the same physical device. Instead, if the logical objects are of the same type, the double link is not accepted and the import check fails.

---

6372 Although the map number was properly supported in the CC11 points, it is not visible on the plant browser geographical tree and in the event location for the geographical link nodes.

---

### Intrusion control units

6328 A misalignment could occur on the day/night mode state in case the CS4/CS440/CZ12 control unit reports a "changeover blocked".

---

6350 Troubles in importing CS4 list-files produced by the SWE4 tool in German.

---

### Event treatment

5697 Event list used to close automatically even when not necessary (dual monitor or no other application present).

---

6320 Missing event counter lamp for CZ10 manual extinguishing mode. Due to a wrong internal setting (severity=0), that specific event was not notified on the lamp.

---

6345 The vitality fault state did not generate the appropriate fault event on the control

---

unit node.

---

### Alarm printout

6297 HTML files: alarm printouts did not support national languages requiring extended ASCII character sets (also available for MM8000 MP2.31-02, see hot-fix #9 – contact customer support).

---

### Operating procedures

6283 The HTML step, which can display a web page, used to fail if the pathname was longer than 50 characters.

---

6318 Troubles to create an operating procedure and manually assign it to specific points. Even deselecting the "Enable Auto assignment" flag, the operating procedure was still assigned automatically.

---

### Plant browser

6301 No commands or property states were available on the property page of a geographical link.

---

6316 Excessive delay might occur in opening the graphic maps in the plant browser ("server busy" message).

---

### History browser

6339 Command logs in the history archive used to always report the command result as OK, even when the result was actually not successful.

---

### Performances

6254 Performance improvement in graphic map display with networked configurations.

---

### Security

6324 When in closed mode on Windows XP, MM8000 still allowed for the Ctrl-Alt-Del menu to be available. It is now intercepted and disabled.

---

### Composer tools

6227 A download error used to occur if a download was commanded just after having added a node into a sequence or a reaction. An additional click on the sequence or reaction was required.

---

6241 Downloads could occasionally fail after having added or deleted video components.

---

6299 In MP3.10, projects developed in 2.31 and including NK8000 components may not be properly converted. MP3.10-01 is required.

---

6245 Could not add a manual association to page/camera to the geographical link nodes.

---

6260 The function to change a graphic command into a graphic point did not work properly. The point was erroneously resized and moved to the top-left corner of the map.

---

6262 Composer might hang after a node modification if an intervention text was configured (also available for MM8000 MP2.31-02, see hot-fix #10 – contact customer support).

---

6291 In MP3.10, the web-based NK8210 configuration tool could only work properly on Windows 2000, whereas problems occurred with Windows XP and Windows 2003 server. MP3.10-01 has fixed this.

---

- 6331 In MP3.10, download failed after deletion of a zone with some points automatically linked to a Camera. MP3.10-01 is required.
- 
- 6335 Unlike MP3.10, the icon ID field in the Composer grid view is now editable.
- 
- 6341 Due to an inaccessible system folder, “non-administrator” users could not customize MM8000 icons. This is now solved using a temporary folder for internal operations.
- 
- 6342 Customised icons could not be removed even when no longer used.
- 
- 6353 Composer projects could be corrupted and no more usable after the deletion of maps including video camera objects.
- 
- 6354 Troubles used to occur on configurations including map pages configured in 2.31 and then restored in 3.10.
- 
- 6371 Sequence editor problems (EfeC2.exe application error) occurred if a previously-pasted function was deleted.
- 

### Video applications

- 6244 The camera/point assignment, defining the camera’s coverage, could provide a wrong result after a coverage area modification.
- 
- 6264 The default camera setting did not work properly if a second association is added to a point including the same camera.
- 
- 6281 The video image was lost when the SISTORE MXpro camera software application (snap-in) was maximised.
- 
- 6282 Point property windows could be overlaid by the video application windows. It now displays in foreground.
- 
- 6293 Video step in the Operating Procedures could not be set as automatic step when in free treatment mode.
- 
- 6294 Difficulties in playing back the video images in the history browser. The video application was minimised and, in certain cases (closed mode), it could be impossible to show it again.
- 
- 6348 Downloading errors (related to “ADO” code) could occur with configurations including SISTORE MXpro. This resulted in the video application not working properly.
- 

### Graphic tool

- 4289 Various problems were found in importing complex AutoCAD files.
- 4324 A new CAD software library has been integrated in Composer and MM8000. Full support for version 2005 DWG/DXF and earlier (from version 12 upwards) is provided.
- 5638
- 5756
- 5825 **Technical note:** support of AutoCAD files is now based on the Open Design Alliance™ software ([www.opendesign.com](http://www.opendesign.com)).
- 5968
- 6369
- 
- 5127 In AutoCAD background, full lines could erroneously appear as dotted lines.
- 
- 6247 A confirmation message has been added in the layer deletion to prevent layers from being unintentionally removed.
- 
- 6313 Background troubles (missing objects, slow refresh).
- 6380
- 
- 6317 Background troubles after including BMP files.
-

## 2.4 Installation and configuration procedures

### 2.4.1 Installation

---

MP3.10-01 is a service release distributed as an add-on to the MP3.10 release. In order to get information about MP3.10 installation, please see the MM8000 Installation, Configuration, and Commissioning manual (EDMS n.006799).

Once MP3.10 is installed, and before proceeding to any configuration restore, proceed with the MP3.10-01 installation, as described here below. Note that the procedure applies to all types of MM8000 stations.

1. Log on as Administrator
2. Close all running applications, including Composer, MM8000 Client Applications, and all Windows Administrative Tools (e.g.: Event Viewer, Windows Services, etc.).
3. Create a local copy (on your PC, on the same partition where MM8000 is installed) of the folder *MM8000 MP 3.10 - Fix #MP3.10.01*.
4. Launch the 'Fix\_MM8000\_MP3.10.01.exe' procedure.
5. On the small window that appears, choose the installation option, which can be:
  - “Install FIX”
  - or --
  - “Install FIX and change this station into an MM8000 and Composer Client only”. In this case you must also input the “Server Station Identifier”. This option is available only on Stand-alone/Server machines.
6. The installation procedure installs the new files.
7. After that, the server tasks are automatically restarted. Depending on the station type and on the configuration size, MM8000 will be ready to operate in a few minutes (you can check the server status using the System Supervisor Browser).
8. New MP3.10-01 is ready, start the client application to run it.

### 2.4.2 Composer client settings

---

When using a Composer remote client, please apply the following rules:

1. Composer projects must be created or restored on the Composer server machine in a shared folder, accessible from the Composer Client stations.
2. When the Composer Client is launched, the remote server machine must be selected. One of following windows appears:
  - a) **Connect to Local Server window**. In this case (first start), press the **Browse** button and select the Composer Server machine among those available in the network.



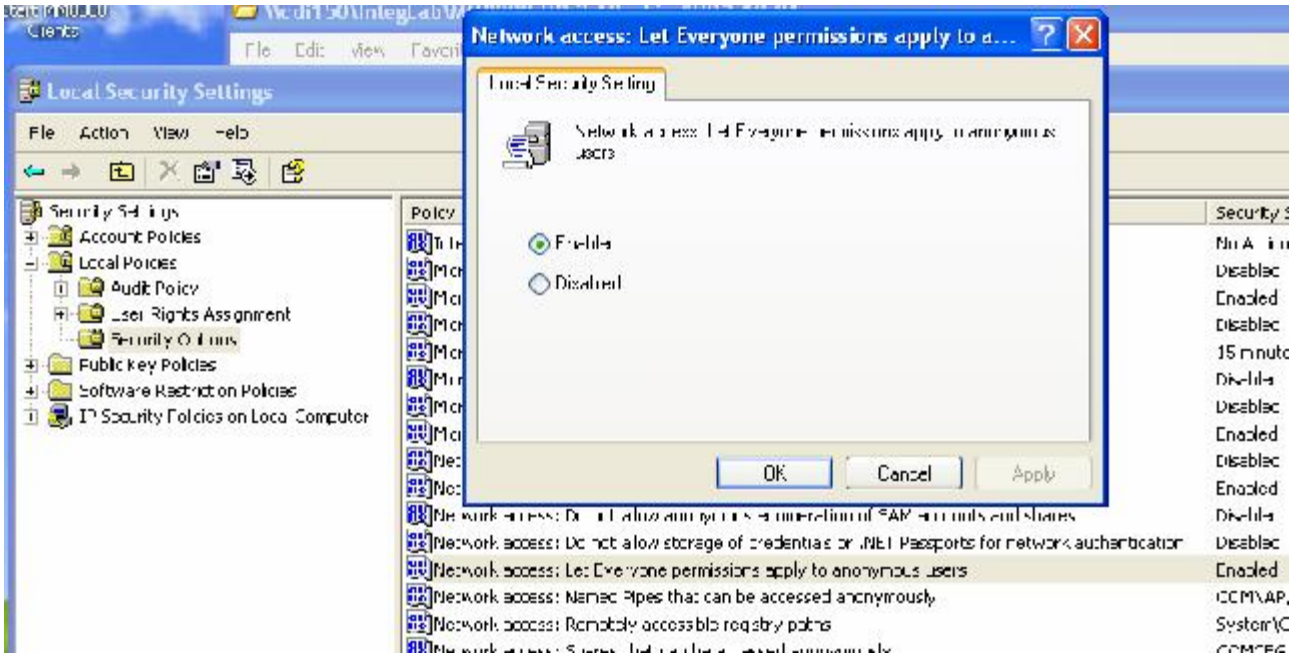
b) **Welcome window.** In this case (subsequent start), press the **Change Server** button and select the Composer Server machine among those available in the network.



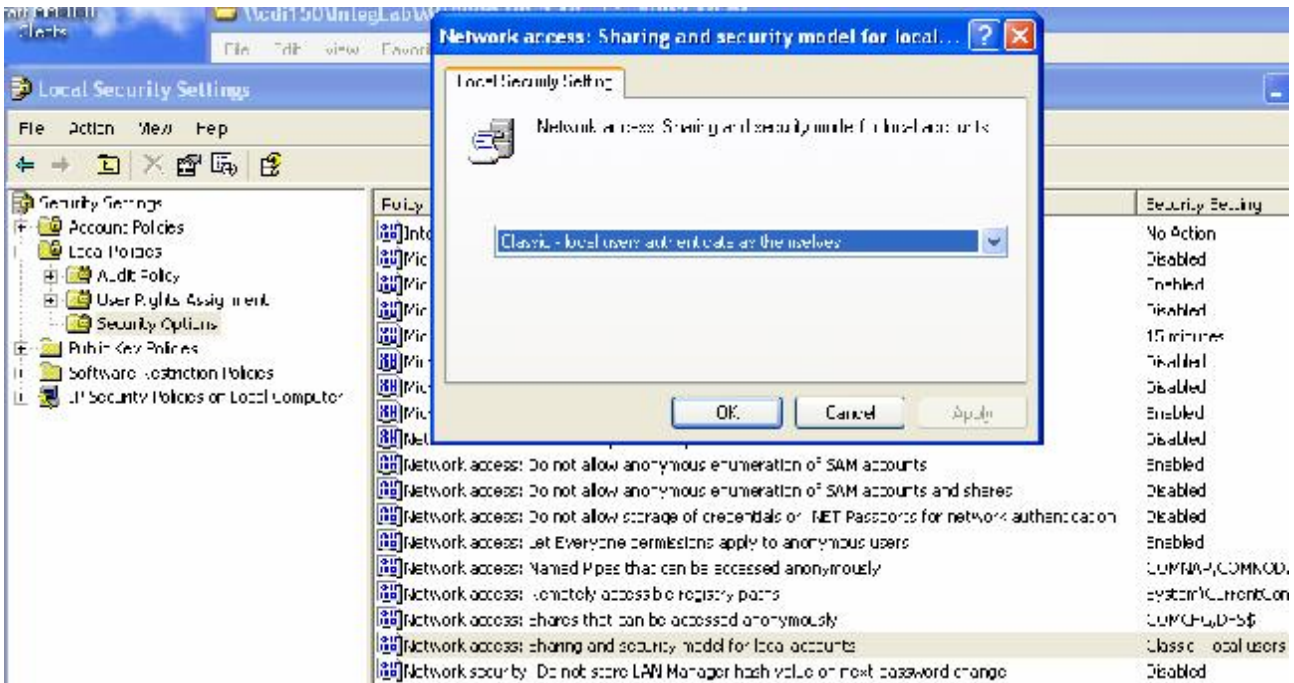
### Windows XP settings for Composer remote

On both Composer Client and Composer Server machines running Windows XP (SP1 or SP2), the following security settings must be applied:

1. Set "Network Access: let Everyone permissions apply to Anonymous Users" to Enabled.



2. Set "Network Access: Sharing and Security model for Local Accounts" to 'Classic'.



## 2.5 MP3.10 documentation errata

---

The list below summarises the errors reported in the MP3.10 documentation set.

### 007083\_e\_en - DMS8000 Connectivity Configuration

Pag.17 Service key enables MM8000 for 24 hours (instead of 2 hours).

---

Pag.67 Sinteso detectors now supported in CS11 EP7.

---

### 006799\_e\_en - Installation Configuration and Commissioning (ICC)

Pag.11 MM8000 hardware requirements, recommendations on RAM memory.  
512 MB minimum, 1 GB recommended.

---

Pag.12 Operating system: SISTORE AX RAS, SISTORE MX RemoteView, and TWS video software do not run under Windows 2003 server.

---

Pag.15 On Windows XP, the special security settings ('Local Security Policy' → 'Network access: Sharing and security model for local accounts' → Classic) is only required by MM8000 networked configurations, whereas is it not needed for single, standalone stations.

---

Pag.26 The Windows user account created by MM8000 for internal services is MM8000\_PROC and has default password = "Dixie#65A39!PWD" (instead of 'Dixie\_PWD').

---

Pag.68 Journaling printer: if the line printer mode is set, MM8000 prints out raw information and the applied characters set must be locally supported in the printer.

---

Pag.68 MP3.10 also includes new journaling templates in order to include all information fields made available by new functions.

---

### 007875\_c\_en - MM8000 Localisation Guide

Pag. 28 Default project localisation: the step 11 of the procedure is wrong, as it refers to an installation batch that is no longer used. Instead, the default project is included in the LANG-xxx.ZIP file by the 'MM8000 Build ZIP File.exe' utility.

---

### 006882\_e\_en - MM8000 Datasheet

Pag.7 In spite of what it is specified in the 'Details for ordering section' / Note 2, Horns and Alarming devices do not count as physical devices in the MM8000 license.

---

## 3 Migrating from MP2.xx releases

### 3.1 Migrating from MP2.10/MP2.20/MP2.30

---

The configuration database migration from older releases - MP2.10, MP2.20, MP2.21, and MP2.30 - is possible using MM8000 MP2.31 as intermediate conversion step (see document 008091 MP2.31 Release Notes).

Then, from the MP2.31 database, you can finally convert your database to MP3.10-xx.

### 3.2 Migrating from MP2.31

---

The migration from release MP2.31 is possible as described in this chapter. You perform the following procedure steps:

1. Before starting any activity, check the installation requirements and the necessary license for MP3.10.  
→ See document 006799 “MM8000 Installation Configuration & Commissioning guide”.
2. Uninstall the previous MM8000 program using standard Windows procedure.
3. Restart the computer.
4. Install MP3.10. Follow the installation instructions detailed in the document 006799 “MM8000 Installation Configuration & Commissioning guide”.
5. If required, install the translated texts as described in 007875 “MM8000 Localisation Guide”.
6. Install MP3.10-01 as described in 2.4.1 (new for MP3.10-01).
7. Start Composer and restore your project.
8. In the MM8000 structure tree, select  
Supervision System Settings → MM8000 System → Logical Configuration → User Data
9. On the Node tab, press the button labelled “Project Update”.  
The update procedure will start and may present a message window that informs you about forced modifications in the projects. A detailed log is provided in <installation folder>\Logs\NEOUPDATE.LOG (see 3.2.1 below).
10. The update procedure will proceed for some minutes, depending on the size of the project. Wait for the procedure to complete.
11. CF9000 model has changed and the related link to NK8000 or GWxx should be recreated. In the previous version, one of the CF9003 units of the CF9000 system was linked to the COM port of NK822x or GWxx. This link should be removed (you can find it just below the COM port). Then create a new one by dragging the main CF9000 system node onto the COM port.
12. Journaling templates (printout formats) have also changed and should be re-installed and then linked again. You can notice that the journaling printer is linked to one of the templates that are located in:  
Supervision System Settings → MM8000 System → Logical Configuration → System Data → Journaling Services → Templates.  
In order to get the new MP3.10 templates, proceed as follows:



- a) Delete the existing 'Journaling Services' node. This also removes all existing links.
  - b) Click on 'System Data' and install the new Journaling Services node.
  - c) Drag your journaling printer (find it in Supervision System Settings → MM8000 System → Physical Configuration) to one of the new templates.
13. If Windows XP is used, the IP Address of the local station - that used to be 127.1.1.127 in MP2.31-xx - must be changed to 127.0.0.1 or to the real IP address. In the MM8000 structure tree, select:
- Supervision System Settings → MM8000 System → Physical Configuration → Station.
- Then, in the node tab, set the IP Address of the local station to 127.0.0.1.
14. Download the new project.
15. Close Composer.

### 3.2.1 Update procedure log

Due to a reorganisation of the MP3.10 internal database structure, the configuration migration from older releases implies the replacement of various object properties. It may happen that removed properties had been customised with a special configuration related to specific types of event, customer texts, reaction etc. In this case, the update procedure may not be able to automatically map the customisations into the new structure. Should that happen, you have to analyse the NEOUPDATE.LOG file (located in <installation folder>\Logs\), see what modifications were present in the removed properties, and then decide what to customise again in the new structure.

Here is a commented example of the NEOUPDATE.LOG file:

Start Update on Friday, March 11, 2005 at 09:51:43

#### \*\*\*\*\* Styles \*\*\*\*\*

[Comment: this section lists the general modifications to the Event Styles that apply to all control units of the given type]

#### Remove Custom Style

<Virtual property 3004-Fault 4> on Node Type <SubsystemTool=CZ10 NodeClass=Fire zone>

[Comment: the line above indicates that the Fault property no. 3004 has been removed from the styles for CZ10 Fire zones and replaced with another property with the same meaning.]

Journaling flag: Custom=FALSE	<Default Virtual property Fault 4>=TRUE
Historian flag: Custom=FALSE	<Default Virtual property Fault 4>=TRUE
Auto Close: Custom=FALSE	<Default Virtual property Fault 4>=TRUE
Auto Ack: Custom=TRUE	<Default Virtual property Fault 4>=FALSE
Category: Custom=SEVERE_ALARM	<Default Virtual property Fault 4>=FAULT
Intervention Text: Custom="Caution!"	<Default Virtual property Fault 4>="null"
Sound Priority: Custom=VERY HIGH	<Default Virtual property Fault 4>=MEDIUM

[Comment: the lines above indicate that various options have been configured for the removed property. Please note the selected options on the left and the default setting on the right hand side. If required, the equivalent settings should be entered in the new property available in the CZ10 fire zone style with the same (Fault) purpose].

#### \*\*\*\*\* Extended Nodes \*\*\*\*\*

[Comment: this section lists the specific modifications to individual objects]

Remove Custom <Virtual property 111-Fi alarm 5> on node <Project->Field->CZ10 #1->Physical tree->Lines->Line #1->Fire element #2 (01/02)>

*Migrating from MP2.xx releases*

[Comment: the line above indicates that the Fire Alarm property no.111 has been removed from the Fire element #2 of CZ10 #1 and replaced with another property with the same meaning.]

Generate Event Flag: Custom=TRUE	<Default Virtual property Fi alarm 5>=FALSE
Normal State: Custom=ACTIVE	<Default Virtual property Fi alarm 5>=QUIET
Close Off default: Custom=TRUE	<Default Virtual property Fi alarm 5>=FALSE
Auto Close: Custom=FALSE	<Default Virtual property Fi alarm 5>=TRUE
Auto Ack: Custom=TRUE	<Default Virtual property Fi alarm 5>=FALSE
Category: Custom=ANOMALY	<Default Virtual property Fi alarm 5>=SEVERE_ALARM
Priority: Custom=55	<Default Virtual property Fi alarm 5>=1
Sound Priority: Custom=VERY HIGH	<Default Virtual property Fi alarm 5>=MEDIUM

[Comment: the lines above indicate that various options have been configured for the removed property. Please note the selected options on the left and the default setting on the right hand side. If required, the equivalent settings should be entered in the new property available in the specific point with the same (Fire alarm) purpose].

**Invalid Reactions List**

Invalid Reaction: Reaction #1

[Comment: the line above indicates that, after the update procedure, the Reaction #1 is not valid any more, possibly due to a removed property that used to be referenced in the reaction. Please see the related reaction page in Composer, note that faulty references are shown in yellow].

End Update on Friday, March 11, 2005 at 09:52:01

## 4 Known issues in MP3.10-01

---

This is a list of known limitations, problems and bugs in MP3.10-01 at the time this software was released.

### 4.1 Installation

---

#### **MSDE or SQL server**

MM8000 History requires SQL server or MSDE (MS SQL server Desktop Engine) V8 or 2000.

**Note:** Earlier versions of SQL server or MSDE, **particularly MSDE V7 installed by MS-Visio 2000, is not compatible.**

#### **SQL security**

MSDE has a security weakness (the empty 'sa' password) that can be fixed by setting your SQL password with a special command available in:

<installation folder>\Utilities\Bat\SetSQLServerPassword.bat

**Note:** You can edit this file and replace the "%1" field with your own password. Then save the file with another name (the original is read-only) and run it. Keep the new file in case you need to refer to the new SQL password.

#### **Troubles with the hardware key**

If after the installation the PAK manager cannot recognise the HW key, the sentinel drivers need to be installed manually. In this case launch the set-up located in:

MM8000 → PAK Manager → Sentinel Drivers → SSD5411-32bit

and follow the instructions; when prompted, select the default installation.

#### **Anti-virus software**

This software may affect the performances of the graphical software. We recommend the use of virus protection software that proved to ensure best performances, namely:

- McAfee 7.0 or later;
- Norton V5 or later.

#### **Cannot change domain/PC name**

MM8000 does not support a domain/PC name change on the Client or Server after the installation. The solution is to uninstall MM8000, reboot, and then install the software again.

→ See also 006799 MM8000 ICC manual.

#### **Printer spooler**

MM8000 always requires the printer spooler to be enabled for the configured printers.

#### **Clear History DB**

Rare cases of difficulties in the history functions have been reported after installation. In such cases, the FSP-DMS support may recommend the use of the batch:

<installation folder>\Utilities\Bat\Historian DB reset.bat

That clears the database (still empty anyway) and can solve the installation problem.

### **Video applications**

Video applications require specific software to be installed before MM8000 (Siemens video viewers and other utilities). Please check software requirements in 006799 MM8000 ICC manual.

→ **Windows Server 2003 is not supported by video applications.**

### **Alarm printout**

The alarm printout application requires specific Microsoft software to be installed (Internet Explorer 6). Please check software requirements in 006799 MM8000 ICC manual.

### **NS8210 / NK822x web server**

The access to service web pages in the NK8000 components requires specific Windows software to be installed (Internet Information System). Please check software requirements in 006799 MM8000 ICC manual.

### **Windows XP**

MM8000 MP3.10 can run on Windows XP. However, the use of this operating system requires special settings, especially if SP2 is installed. Please check software requirements in 006799 MM8000 ICC manual.

## **4.2 Configuration**

---

### **Download failures**

Repetitive download attempts may cause failures. In this case, close Composer after each download and then reopen it.

### **Cut/Copy/Paste not supported**

Cut, Copy, and Paste commands are not supported in the Composer structure tree with one important exception: the maps, which can be copied and pasted. This means that the tree structure should be carefully defined because it cannot be easily modified at later time.

### **Graphic tool: best practises for bit-map files:**

Convert BMP files to JPG (photos) or to GIF (schemas). This will considerably improve the performance.

### **Graphic tool: names of graphic maps**

In Composer, names of graphic maps should never be longer than 50 characters.

### **Graphic tool: problem filtering AutoCad layers in metric maps**

If used for metric maps, the AutoCad importing wizard erroneously notifies a problem when the "CAD selection → Layer" window is selected. The following message is displayed: "Error loading file <filename>" and the Autocad file is apparently not imported. Actually, if you then close and re-open the map, the AutoCAD image is shown properly, as it is present in the map in spite of the error message.

### **FDMNG server troubles**

If any of the MM8000 folders are selected in the Windows Explorer during download, problems occur in the file distributor process 'FDMNG'. In this case, the FDMNG task does not start up properly (red icon in the system supervisor browser), or the map pages may not display properly. Should this happen, run the "Empty\_DB.bat" procedure and then download again.

→ See 006799 MM8000 MP3.10 ICC manual.

**MT8000**

When installed with MM8000 software, the Composer tools, even if enhanced with the MT8000 plug-in, cannot be used for downloading MT8000 terminals. Instead, if you install “Composer only”, and add the MT8000 plug-ins, then you can properly download the terminals.

**DMS7000 metafile for CZ10 and CZ12**

If a subsequent import is required, then the control unit name should be the same original name or the import will not work.

**Backup version**

The Composer project backup files include the version of MM8000 used for the latest backup command. The version information is contained in the ZIP comment field, which can be shown by WinZip in the following way:

- 1 In WinZip 8.1, enable the comment option in “Miscellaneous options” → “Show comment when opening ZIP files”.
- 2 In earlier WinZip versions, access the comment with the command “Actions”→ “Comments”.

**Cannot use USB service key and old parallel keys at the same time**

In certain cases, two license keys can be used on the same machine to enable MM8000 and tools separately. Be aware that the old generation of keys (larger in size, see picture below) will not work properly when the USB key is also installed. In such cases, you will have to remove the USB dongle (i.e. the service key used for enabling Composer) when you need the MM8000 to recognise the parallel key.

Model	Picture	Can it be used together with USB?	Customer Key and + Service Key
New model		Yes 	USB key can be used with no side effect on the parallel-port key.
Old model		No 	USB key must be removed in order to get the parallel-port key to work again.

**“Move” function in AlgoRex tool**

The AlgoWork “move” function, which allows CC11 objects to be moved in the tree structure, is not fully supported in MM8000 tools (ref. #5521). In fact, the import procedure can treat this case but it operates by deleting and recreating the object in the MM8000 structure. This results in the previous links of the moved object being lost, e.g. a fire zone will disappear from its map or its reaction. You then have to configure the object again in maps and reactions.

**SI410/420 Sintony**

- The Sintony control unit should be configured to enable the Partition setting while in power supply and communication failure conditions.
- No commands are supported for “Room” objects.
- Modifications to the control unit via local terminal configuration should be disabled in order to prevent inconsistencies with the MM8000 database.

**CC11 AlgoRex EP7**

Please be aware that:

- The following structures are imported in the logical and not in the physical tree:
  - 1551 - Digital output;
  - 1552 - Digital output supervised;
  - 1560 - Internal horn;
  - 1561, 1564, 1565 - External horn;
  - 1562 attribute = RTFIRE – “Alarm” remote transmission channel;
  - 1562 attribute = RTFAULT – “Fault” remote transmission channel;
  - 1562 attribute = RTOTHER – “Other” remote transmission channel.
  
- A consistency check (uniqueness of relationships between logical and physical objects) may prevent certain CC11 metafiles from being imported. Actually, MP3.10-01 allows logical objects of different nature (e.g.: a detector and an actuation element) to be linked to the same physical device. Unfortunately, if the logical objects are of the same type, the double link is not accepted and the import check fails.

## 4.3 Functionality

---

- **FEP stations require server when starting up**
  - Distributed configurations including FEP stations: when you start up a FEP station, you have to ensure beforehand that the MM8000 server is already up and running.
  
- **Cannot abort history restore**
  - Once in progress, the history restore procedure cannot be aborted. Trying to abort may result in the history browser hanging up when a new restore is executed at later time.
  
- **Low virtual memory events**
  - Depending on the specific configuration and on the PC hardware characteristics, MM8000 software may use up the memory resources in Windows and cause the “Low virtual memory” error message to display. Should that occur, you can **adjust the virtual memory size** (it actually refers to the size of the *paging* file where the operating system swaps on disk the active memory areas). Accessing the Windows menu with Administration rights, proceed as follows:
    - Start → Settings → Control Panel → System → Advanced tab → Performance Options → Virtual memory “change” button.
    - At this point, in the disk drive list that appear, select the Windows 2000 System disk driver (typically C:) and set the size values as follows:

	Client / FEP	Stand-alone / Server
Initial size	1000 MB	2000 MB and more <sup>(1)</sup>
Maximum size	4095 MB	4095 MB

---

<sup>1</sup> Initial size may be extended up to 3000 MB in case low memory events still occur.

## 5 Customer support links & resources

### 5.1 MM8000

---

CD-IT support provides information on the Intranet site <http://www.cdi.cerberus.ch/support/supp-lmsn.asp>. A software troubleshooting guide is available at: <http://www.cdi.cerberus.ch/support/supp-trou.asp> (password required) or deliverable upon request. Please note the new support mailbox: [support-dms.it.sbt@siemens.com](mailto:support-dms.it.sbt@siemens.com).

### 5.2 Microsoft

#### 5.2.1 General support

---

General support about Microsoft Windows can be found at:  
→ <http://support.microsoft.com/directory/>

#### 5.2.2 Windows 2000

---

Windows 2000 support  
→ <http://www.microsoft.com/windows2000/support/default.asp>

Windows 2000 SP4 - Frequently Asked Questions (FAQs):  
→ <http://www.microsoft.com/windows2000/support/issues/SP4faq.asp>

Security issues:  
→ <http://www.microsoft.com/technet/security/CurrentDL.aspx>

#### 5.2.3 Windows XP

---

Technical information, including deployment guides  
→ [http://www.microsoft.com/resources/documentation/Windows/XP/all/reskit/en-us/prork\\_overview.asp](http://www.microsoft.com/resources/documentation/Windows/XP/all/reskit/en-us/prork_overview.asp)

Windows XP support  
→ <http://www.microsoft.com/windowsxp/support/default.mspx>

Windows XP SP2 - Frequently Asked Questions (FAQs)  
→ <http://www.microsoft.com/windowsxp/sp2/default.mspx>

Windows XP SP2 – How to ...  
→ <http://www.microsoft.com/windowsxp/sp2/howto/default.mspx>

Security issues  
→ <http://www.microsoft.com/technet/security/CurrentDL.aspx>

### 5.3 Adobe Acrobat

---

To view the PDF document is necessary to install the program Adobe Acrobat Reader. You can find its free version at:  
<http://www.adobe.com/products/acrobat/readstep.html>

Siemens Switzerland Ltd  
Building Technologies Group  
International Headquarters  
Alte Landstr. 411  
CH-8708 Männedorf  
Tel. +41 1 - 922 6111  
Fax +41 1 - 922 6450  
[www.sbt.siemens.com](http://www.sbt.siemens.com)

---

Document no. **008601\_b\_en**  
Edition 03.2005

MM8000 Technical Material  
Section 1