

SIEMENS



MM8000 MP3.20-01 Management Station

Product Release Notes

Building Technologies

Fire Safety & Security Products

Data and design subject to change without notice. / Supply subject to availability.
© 2006 Copyright by
Siemens Switzerland Ltd

We reserve all rights in this document and in the subject thereof. By acceptance of the document the recipient acknowledges these rights and undertakes not to publish the document nor the subject thereof in full or in part, nor to make them available to any third party without our prior express written authorization, nor to use it for any purpose other than for which it was delivered to him.

1	Introduction	5
1.1	MP3.20-01 at a glance	5
2	What's new in MP3.20 and higher releases.....	6
2.1.1	MK8000 integrated in MM8000	6
2.1.2	Installation	6
2.1.3	Composer.....	7
2.1.4	Enhanced connectivity	8
2.1.4.1	SiPass	11
2.1.4.2	Video	12
2.1.4.3	SI410/420 Sintony.....	12
2.1.4.4	FC330 (CS1115).....	13
2.1.4.5	NK8000 and BACnet/IP	14
2.1.4.6	SIGMASYS/D100.....	14
2.1.4.7	3 rd party subsystem connectivity via NK8000	15
2.1.5	Miscellaneous improvements introduced in MP3.20	16
2.1.5.1	User interface.....	16
2.1.5.2	History archive	16
2.1.5.3	Character sets for SMS and Paging messages.....	17
2.1.6	Miscellaneous improvements introduced in MP3.20-01	18
2.1.6.1	Incremental download.....	18
2.1.6.2	Operating procedure scope on system tree.....	18
2.1.6.3	Improved performances in SISTORE CX video applications.....	19
2.1.6.4	More options in the geographical tree linking	19
2.1.6.5	Safer NK822x download	19
2.1.6.6	Multiple SiPass systems	20
2.1.6.7	MS-SQL server databases replacing older MS-Access files	21
2.1.6.8	Redundant server solution with Marathon	21
2.1.6.9	Integrated Engineering Tools.....	23
2.1.6.10	MODBUS and CDDL/CDSF connectivity via NK8000	24
2.1.6.11	CC11 AlgoRex EP7F Z2.1 – Extinguishing messages	24
3	Bug correction.....	25
3.1	Corrections in MP3.20.....	25
3.2	Corrections in MP3.20-01	27
4	Installation and configuration procedures	30
4.1	MP3.20-01 Software installation	30
4.1.1	New systems: installing MP3.20-01	30
5	Migrating from older releases.....	32
5.1	Software License.....	32
5.2	Localisation	32
5.3	Migrating from MP2.xx	32
5.4	Migrating from MP3.xx	32
6	Known issues in MP3.20-01	34
6.1	Installation	34
6.2	Configuration.....	36
6.3	Functionality	38
7	Documentation	43
7.1	Sales documentation.....	43
7.2	Technical documentation	43
7.2.1	MP3.20 documentation errata.....	44
8	Customer support links & resources.....	45

8.1	Siemens FS.....	45
8.2	Microsoft.....	45
8.2.1	Windows 2000.....	45
8.2.2	Windows XP	45
8.3	Adobe Acrobat	45

1 Introduction

The new MM8000 software release MP3.20-01 is available. These release notes provide the characteristics of the new software, including new features, bug corrections and known issues. We recommend that users carefully read this document before installing and using the software.

1.1 MP3.20-01 at a glance

In general, comparing MM8000 MP3.20-01 includes the following main new features:

- Support for incremental download
- Operating procedure scope on system subtrees
- More options in the geographical tree linking
- Safer NK822x configuration and download
- Support for multiple SiPass systems
- Notes about MS-SQL server replacing older MS-Access databases
- Redundant server solutions with Marathon
- New integrated environment for the advanced engineering tools

→ The features listed above are described in 2.1.6 on page 18.

2 What's new in MP3.20 and higher releases

This section presents the enhancements provided in the new MM8000 software, starting from MP3.20, compared with previous MP3.15-xx.

2.1.1 MK8000 integrated in MM8000

Starting from MP3.20, MM8000 and MK8000 are integrated in the same general software environment. Although the setup procedures are separated and the products can be installed individually, a properly configured and licensed MM8000 system can now provide the MK8000 OPC server functions to OPC clients.

The MM8000 setup also includes a command to switch to MK8000 product and vice versa. The command modifies the server task list and the Composer default project.

→ See MM8000 ICC manual no. '006799_h_en'.

2.1.2 Installation

Hardware requirements

New in MP3.20-01

In case of extended use of memory-demanding functions (server station of a client/server system, large configuration over 10,000 points, and configuration including reactions) the minimum requirement of RAM memory (512MB to 1GB, see ICC Manual, section 4.1) results now insufficient. In such cases, please plan to install at least **2 GB of RAM**. If in doubt, contact customer support.

Software requirements

As in MP3.20 release, Microsoft software **SQL Server 2000** (or the corresponding Desktop Engine **MSDE**), **.NET Framework V1.1** and **SQLXML 3.0 SP3** are required by MM8000 MP3.20-01. This software is distributed free of charge in the DMS8000 product CD.

→ See MM8000 ICC manual no. '006799_h_en'.

New in MP3.20-01

On top of this, MP3.20-01 also necessitates the **.NET Framework V2.0**, which can contribute in speeding up database transfers and is particularly useful in the incremental download phase.

MP3.20-01 is NOT compatible with the new Windows Vista and, as far as the graphic printout function is concerned, is NOT compatible with latest Internet Explorer 7. We recommend the use of Windows XP SP2 and IE6.

Also, please do NOT use SQL Server 2005, which is currently not supported.

Installation menu

Starting from MP3.20, an installation menu (automatically started by the CD Auto-run function) guides you in the installation of the required software as well as in the MM8000 setup.

→ See MM8000 ICC manual no. '006799_h_en'.

Default installation folder

Unlike MP3.15 releases, the MM8000 MP3.20 and MP3.20-01 installs the software files in the 'C:\Program Files\DMS8000' folder (previously, the default folder was C:\MM8000). You can change the default destination folder during the setup procedure.

Note that the folder "*Program Files*" can be named differently depending on the national Windows version.

→ See MM8000 ICC manual no. '006799_h_en'.

2.1.3 Composer

Composer environment

In comparison with MP3.15, Composer MP3.20 has been improved to allow large configurations and faster downloads. Also, a project management page and some new functions have been provided. Direct upgrade of projects 3.10 and higher is ensured.

→ See Composer Technical manual no. '003183_l_en'.

New in MP3.20-01

Composer MP3.20-01 can also provide the incremental download option that can very often result in even faster updating of the system configuration.

Multiple clients and remote client

Up to two Composer MP3.20-01 client stations can be used simultaneously for configuration purposes on the same project, using the Composer client software and connecting (even from a remotely networked PC) to the Composer server.

As for a single client, Composer requires a license + key or a Service key installed on the server machine. Note that the service key, when installed on the client PC, cannot enable the Composer client function.

→ See Composer Technical manual no. '003183_l_en'.



Note that, given the lack of specific messaging services between multiple stations, Composer users simultaneously accessing the same project should be able to directly inform each other about activities, such as importing or downloading, which can temporarily suspend the server availability and significantly delay the system response. Also, simultaneous editing of the same graphic map is not allowed (modification collision is not checked and may result in loss of data).

User Manager

In MM8000 MP3.20 and later, the User Manager tool is a simple application that allows configuring the Windows users who can start Composer, create new projects, run the configuration commands, and access the nodes information. The User Manager application can also associate each user to a *security profile*, which defines the set of available Composer commands, and to a *visibility level*, which enables the access to a given set of Composer node properties.

→ See MM8000 ICC manual no. '006799_h_en'.

2.1.4 Enhanced connectivity

Direct connection to MM8000 (MP3.20)

- Support for large configurations (100,000 Composer nodes), including up to 100 NK822x units.
→ See DMS8000 Network, Fire & Intrusion Connect.Guide no. '007083_j_en'.
- Support for STT20 and STT2410 is now integrated in MM8000 basic package.
→ See DMS8000 Network, Fire & Intrusion Connect.Guide no. '007083_j_en'.
- SiPass: use V2.35. Support for older releases has been discontinued.
→ See 2.1.4.1 below.
- Video: support for new SISTORE SX and CX as well as SIMATRIX NEO.
→ See 2.1.4.2 below.
- FC330A and CC1115 fire units can be directly connected to MM8000 stations.
→ See 2.1.4.4 below.
- 3rd party video system: support for Geutebrück MSC (Multiscope) Digital Video Recorder (from MM8000 MP3.12).
→ See Video Connectivity Guide no. '009425_b_en'.

Connection via NK8000 network (MP3.20)

- NK8000 MP3.20-01 network: NK8225 Ethernet Port with BACnet Gateway for connecting DMS8000 over BACnet/IP.
→ See 2.1.4.5 below.
- 3rd party system: support of DLCS door control (from MP3.12).
→ See Access Control Connectivity Guide no. '009424_b_en'.
- 3rd party subsystems; Add-on packages are available for:
 - Autronica BSxxx
 - LIST SCU 2000⁽¹⁾
 - MAXSYS PC601
 - CP100→ See 2.1.4.7 below.

New in MP3.20-01

MODBUS and CDDL/CDSF⁽¹⁾

- Further Add-on packages are available for field test of control units based on MODBUS and CDDL/CDSF communication protocols.
→ See 2.1.6.10 below.

¹⁾ For field test only. Please contact customer support.

For your information, here below are summary tables of the network, subsystem and peripheral equipment compatibility in MP3.20-01:

Network	News in MP3.20 and MP3.20-01	Further info. in this document	Further info. in DMS8000 documentation
Direct serial links: – CS11 AlgoRex© (via CK1142) – FC700A (via FG700A) – SI410 Sintony™ – CC1115 / FC330A	Direct link option for CS1115 and FC330A	-	Network, Fire & Intrusion Connectivity Guide: 007083_j_en
LAN links: – Siemens CCTV: SISTORE, TEL-SCAN, IP Cameras – Geutebrück MultiScope – SiPass Access control	-	-	Network, Fire & Intrusion Connectivity Guide: 007083_j_en
– Cerloop	-	-	Network, Fire & Intrusion Connectivity Guide: 007083_j_en
– CDI-Net – NK8000 via serial link	-	-	Network, Fire & Intrusion Connectivity Guide: 007083_j_en
NK8000 LAN: – NK8222 – NK8223 – NK8225	NK8225 BACnet gateway ⁽¹⁾ NK8000 MP3.20-01 firmware	→ 2.1.4.5	Network, Fire & Intrusion Connectivity Guide: 007083_j_en NK8000 Installation, Configur.& Commissioning: 007798_g_en

Tab.1 Network options

Peripheral equipment	News in MP3.20 and MP3.20-01	Further info. in this document	Further info. in DMS8000 documentation
– MT8001	Not available for MP3.20 networks Use NK8000 3.15.	-	MT8001 Installation, Config.& Commissioning: 006647_e_en
SMS service over GMS: – Siemens Modem M20 – Siemens Modem MC35	-	-	MM8000 Installation, Config.& Commissioning: 006799_i_en
E-mail/SMS service over e-mail: – POP3 service provider	-	-	MM8000 Installation, Config.& Commissioning: 006799_i_en
Paging system: – ESPA 4.4.4 system	ASCOM, Novalink,& Telepage systems have been tested	-	

Tab.2 Peripheral equipment and services

¹⁾ Tests with DESIGO INSIGHT are still in progress.

Please contact support for latest information about the availability of integrated DESIGO+MM8000 solutions (TBS, Total Building Solution).

Control units	News in MP3.20 and MP3.20-01	Further info. in this document	Further info. in DMS8000 documentation
- CS11 AlgoRex® EP5 and EP7 - FC700A	EP7F Z2.1 (V7.8x)	→ 2.1.6.11	Network, Fire & Intrusion Connectivity Guide: 007083_j_en
- CS1115 Phase 4 - FC330A Phase 4	CISxx8.85	→ 2.1.4.4	Network, Fire & Intrusion Connectivity Guide: 007083_j_en
- SIGMASYS (field test only) - D100 (field test only)	SIGMASYS V40-2 D100 V3.5	→ 2.1.4.6	Network, Fire & Intrusion Connectivity Guide: 007083_j_en
- STT2410 / STT11 - STT20	-	-	Network, Fire & Intrusion Connectivity Guide: 007083_j_en
- CZ10 / CC60 / CZ12 - CS4 / CS440	-	-	Network, Fire & Intrusion Connectivity Guide: 007083_j_en
- CS6 Quarto™ MP3, MP3+	-	-	Network, Fire & Intrusion Connectivity Guide: 007083_j_en
- SI410/420 Sintony™	F8-05	→ 2.1.4.3	Network, Fire & Intrusion Connectivity Guide: 007083_j_en
- DMS7000 units: MM/MF-7033 etc.	-	-	Network, Fire & Intrusion Connectivity Guide: 007083_j_en
- SIPASS™	V2.35	→ 2.1.4.1	AC Connectivity Guide: 009424_b_en
- SIMATRIX 164; 648; SYS, - SIMATRIX NEO	Support for SIMA- TRIX NEO	→ 2.1.4.2	Video Connectivity Guide: 009425_b_en
- SISTORE AX / MX / MX Pro - SISTORE CX /SX	In MP3.20-01, sup- port for CX/SX 3.01	→ 2.1.4.2	Video Connectivity Guide: 009425_b_en
- TELSCAN	-	→ 2.1.4.2	Video Connectivity Guide: 009425_b_en
- Stand-alone IP cameras	-	→ 2.1.4.2	Video Connectivity Guide: 009425_b_en
- CF9000 I/O subsystem (DF8020/8040/8045/8046)	-	-	Network, Fire & Intrusion Con- nectivity Guide: 007083_j_en
- Geutebrück CCTV MultiScope™ II Plus and III	-	-	Video Connectivity Guide: 009425_b_en
- Philips/Burle CCTV (LTC 8x00)	-	-	Video Connectivity Guide: 009425_b_en
- DLCS door control system (via WinCC OPC server)	-	-	AC Connectivity Guide: 009424_b_en
- Autronica BSxxx	Add-on package	→ 2.1.4.7	Autronica BS Add-on manual 008750_b_en
- LIST SCU 2000 (field test only)	Add-on package	→ 2.1.4.7	LIST Add-on manual 009248_a_en
- MAXSYS PC601	Add-on package	→ 2.1.4.7	MAXSYS Add-on manual 008751_b_en
- CP100	Add-on package	→ 2.1.4.7	CP100 Add-on manual 009848_a_en
- MODBUS-based subsystems (field test only)	Add-on package	→ 2.1.6.10	MODBUS Add-on manual 010015_a_en
- CDDL/CDSF-based subsystems (field test only)	Add-on package	→ 2.1.6.10	CDDL/CDSF Add-on manual 010016_a_en

Tab.3 Subsystem equipment and services

2.1.4.1 SiPass

The following table shows the compatibility between MM8000 and SiPass versions:

Compatibility matrix:	MM8000	SiPass 2.2	SiPass 2.3 Build 18	SiPass 2.3 Build 21	SiPass 2.35
	MP3.15	Yes	No	No	No
MP3.15-01	No	Yes	No	No	No
MP3.15-02	No	No	Contact support (*)	No	No
MP3.20	No	No	Yes	No	No
MP3.20-01	No	No	No	No	Yes

The following table shows the characteristics of the integrated solutions:

#	Description	MM 3.15 + SiPass 2.2	3.15.01/02 + SiPass 2.3	3.20 + SiPass 2.3	3.20-01 + SiPass 2.35
1	MM8000 replaces the SiPass related event management	Yes	Yes	Yes	Yes
2	AC users & permissions in SiPass software launched by MM8000	Yes	Yes	Yes	Yes
3	Door statuses available in MM8000 text pages and graphic maps: Door Alarm (unique event for Door Forced or Held) Door Forced Door Held Door Locked / Unlocked Output Active / Inactive Input/Output Tamper Device Faults (except for Readers) Duress alarm Pass-back input Tamper/Status (REX button) Reader Fault and Tamper	Yes No No Yes Yes Yes Yes No No No	No Yes Yes Yes Yes Yes Yes Yes Yes Yes	No Yes Yes Yes Yes Yes Yes Yes Yes Yes	No Yes Yes Yes Yes Yes Yes Yes Yes Yes
4	Control commands available in MM8000 text pages and graphics: Door Lock / Unlock (propagated on the geographical tree) Allow Access Output Activate / Deactivate	Yes Yes Yes	Yes Yes Yes	Yes Yes Yes	Yes Yes Yes
5	Support for ACC controllers..... Support for CC30 CerPass controllers.....	Yes No	Yes Contact support (*)	Yes Yes	Yes Yes
6	Store events & security-relevant AC transactions in MM8000 history database. The transaction list includes: Access Denied (Zone Violation and Hardware Anti-pass back) Access Granted (not tracked by default)	Yes Yes	Yes Yes	Yes Yes	Yes Yes
7	Limit in number of devices configured in FLN lines	32	253	253	253
8	SiPass transactions can be used to trigger MM8000 reactions	No	No	No	No
9	Support for BLN and IS bus objects	n/a	No	Yes	Yes
10	Support for FLN3a and FLN3b bus objects	n/a	No	Yes	Yes
11	Multiple SiPass systems connected to the same MM8000	No	No	No	Yes

Note:

(*) Feasibility should be technically verified by customer support

→ See Access Control Connectivity Guide no. '009424_b_en'.

2.1.4.2 Video

SISTORE CX/SX Digital Video Recorders are now supported: please refer to the compatibility matrix provided below and to the [known issues](#) described on page 42.

Video device model	Video device version / type	MM8000 Version
SISTORE AX	V2.40	MP3.15, 3.15-01, 3.15-02, 3.20, 3.20-01
	V2.50	MP3.15, 3.15-01, 3.15-02, 3.20, 3.20-01
	V2.60 (recommended)	MP3.15, 3.15-01, 3.15-02, 3.20, 3.20-01
SISTORE MX (including NVR)	V2.55, V2.57, V2.58 (recommended)	MP3.15-02, 3.20, 3.20-01
SISTORE MX Pro	V2.45	MP3.10, 3.15, 3.15-01, 3.15-02, 3.20, 3.20-01
	V2.50	MP3.15, 3.15-01, 3.15-02, 3.20, 3.20-01
SISTORE CX	V3.00, V3.01	MP3.20, 3.20-01
SISTORE SX	V3.00, V3.01	MP3.20, 3.20-01
TELSCAN	V2.00	<i>Not supported</i>
	V2.03A	MP3.15, 3.15-01, 3.15-02, 3.20, 3.20-01
	V2.10	MP3.15-01, 3.15-02, 3.20, 3.20-01
Siemens IP cameras: → directly on LAN and mapped as single-line TELSCAN	Fixed IP cameras with: CCIS 1337-LP, CFVA-IP, CVVA-IP	MP3.15-01, 3.15-02, 3.20, 3.20-01
→ via SISTORE MX	Any IP camera compatible with SISTORE MX	MP3.20, 3.20-01
Geutebrück MSC	V5.0 (3.613)	MP3.20, 3.20-01

→ See Video Connectivity Guide no. '009425_b_en'.

2.1.4.3 SI410/420 Sintony

Support for Sintony control unit has been improved as follows:

- Improved acknowledge command to silence horn.
- Commands are now supported for "Room" objects.
- LSN-Bus option (Radio Gateways) is now supported (F8-05 firmware or higher required).

2.1.4.4 FC330 (CS1115)

FC330A / CS1115 version

The version CISxx8.85 has been tested with MM8000 (xx depends on the national text version). Please contact support for compatibility with latest Service Release 4 (CISxx8.86).

Configuring the communication port in FC330A

In FC330A, in order to enable the communication protocol on the serial port, you need to configure the unit at control panel level. Follow this procedure:

1. Press "Start" and login for operating access (password required).
2. Select option 4 ("Other Functions").
3. Select option 4 ("Configuration").
4. Select option 1 ("User Functions") and enter the Configuration Password.
5. Select option 7 ("Serial Port").
6. Select option 1 ("Fixed Applications").
7. Select one of the two ports (typically Port 1).
8. Set "BMS" (Building Management System) application.
9. Press "Stop" to exit.

Configuring further communication options in FC330A

Other options related to BMS communications are available in the System Data menu. The step list to configure them includes:

1. Enter FC330A configuration mode (see step 1-3 above).
2. Select option 1 ("User Functions") and enter the Configuration Password.
3. Select option 1 ("System Data").
4. Using the "down arrow" button, scroll down the list until you reach the following options:
5. The "Supervise BMS communication" option can be set if you require a local alarm if the communication goes down.
6. The "Prevent commands from BMS" option should not be set.
7. The "BMS message on 1st Multi-2 fire" option may or may not be set depending on the specific site requirements.
8. Press "Stop" to exit.

National version of the FC330A firmware may handle a different set of options in the System Data list.

- See FC330A Manual n.'001583_p_en' and FC330A Manual n.'001383_n_en'.
- See DMS8000 Network, Fire & Intrusion Connectivity Guide no. '007083_j_en'.

2.1.4.5 NK8000 and BACnet/IP

A new NK822x firmware has also been released in MP3.20-01. The new firmware includes defect corrections and optimisations. **Upgrading the NK8222, NK8223 and NK8225 units is recommended.**



Warning: the NK822x units handle the protocol interpretation for the subsystems supporting interactions. In order to do so, the NK822x needs to be downloaded with the updated configuration of the management stations, even after a minor modification to the subsystem structures (e.g.: importing an updated CS11 metafile including a new object).

Depending on the specific configuration change, failing to download the NK822x units may affect the correct behaviour of the telegram interpretation and result in missing event signalling. In general, we recommend including a complete NK822x configuration download after any change in the configuration.

The NK8225 product can provide a BACnet/IP upstream protocol along with all other features supported by NK8223. Note that the BACnet/IP can only transport data messages for the following subsystems:

- CS11 AlgoRex Fire control unit
- FC700A Fire control unit
- CS6 Guarto Intrusion control unit
- SI410 Sintony Intrusion control unit

→ See Network, Fire & Intrusion Connectivity Guide no. '007083_j_en'.

→ See NK8000 MP3 20 Release Notes no. '009422_a_en'.



Note that the Total Building Solution (TBS), including NK8225 and DESIGO, is not officially released yet. The availability of TBS will be announced as soon as the field test phase has been successfully completed.

2.1.4.6 SIGMASYS/D100

The SIGMASYS/D100 is a family of fire systems that includes:

- SIGMASYS fire control units
- D100 fire system

These systems can communicate with a head-end host using the VBF (Virtuelle BedienFeld Schnittstelle) protocol.

The NK822x MP3.20 network units can communicate over serial lines using the VBF protocol and convert the application messages appropriately. In case of complex architectures including multiple subsystems, one of the control units (master node) is connected to the NK822x unit.

This allows MM8000 management stations to present the SIGMASYS/D100 events and issue control commands.

In the MM8000 configuration tool (Composer), the SIGMASYS/D100 units are defined as field subsystems whose internal configuration is directly imported from the XML and EXP files created by the export function of D100 configuration tool.

→ See more in Network, Fire & Intrusion Connectivity Guide no. '007083_j_en'.

New in MP3.20-01

At the moment, this solution is available for field test only. If interested, please contact customer support.

2.1.4.7 3rd party subsystem connectivity via NK8000

Although not integrated in the basic package, the support for a number of control units is possible using specific **Add-on packages**. The list of (MP3.20) units includes:

- Autronica BSxxx Fire detection unit
- LIST SCU 2000 Fire detection unit
- MAXSYS PC601 Intrusion detection unit
- CP100 Gas detection unit

In all these cases, a special add-on package and possibly a license is required (please contact support).

Note that these units are all connected via NK822x, equipped with specific firmware components. The firmware files (DLL) are installed along with the add-on package and need to be downloaded to the NK822x units before starting the communication.

→ See Autronica BSxxx Add-on manual no. '008750_b_en'.

→ See MAXSYS PC601 Add-on manual no. '008751_b_en'.

→ See LIST Add-on manual no. '009248_a_en'.

→ See CP100 Add-on manual no. '009848_a_en'.

Note: see also the new MP3.20-01 add-ons presented in 2.1.6.10 on page 24.

2.1.5 Miscellaneous improvements introduced in MP3.20

2.1.5.1 User interface

System Monitor icon

Starting from MP3.20, an MM8000 status icon appears in the Windows system tray on the bottom right of the screen. Help texts appear automatically next to the icon. Also, clicking the icon opens a menu providing a set of control commands including:

- Start/Stop MM8000 Servers (simulation mode can optionally be selected).
- Launch the System Supervisor Browser
- See MM8000 ICC manual no. '006799_h_en'.

Event treatment

- Improved visibility of filtered states of the event list. Also, filtered conditions can be automatically removed after a programmed maximum delay.
- New command icon to add customer notes during treatment of events.
- In the Plant Browser, selecting a symbol in a graphic map results now in the corresponding node being selected in the browsing tree as well.
- In the graphic configuration tool, more options are available on the layer properties of cameras.
- Improved visibility of the aerial view over the graphic maps.
- A confirmation can optionally be added when sending out commands.
- See MM8000 Operation Manual no. '006798_h_en'.

Geographical tree

Linking a node into the geographical tree also links the corresponding subtree. This allows to easily merge the geographical and logical structure and provides the full status information and control commands in the geographical views.

2.1.5.2 History archive

History archive management

Automatic archiving can be provided when database is full or on a (scheduled) time basis.

Huge reports

Possibility to generate very large reports (more than 10,000 registrations) for export only.

- See MM8000 Operation Manual no. '006798_h_en'.

2.1.5.3 Character sets for SMS and Paging messages

Updated in MP3.20-01

Localization of character sets

Two MS-Access files are provided in the localisation kit to convert the UNICODE characters supported by MM8000 to national sets according to the specifications of GSM modem and Paging system.

→ See MM8000 Localisation Engineering Guide no. 007769_g_en.

In general, GSM modems and Pagers work with 7-bit character sets and can support a limited number of characters. A specific, device-dependent conversion can adapt or replace the special characters.

Default files

The default file for SMS messages already includes the set supported by Siemens MC35 modem (GSM 03.38 alphabet), including most of the characters for western languages.

Instead, the default file for Paging messages only contains a few examples and does not refer to any specific device or standard.

→ For detailed information on the character set, please refer to the technical manuals of the GSM modem or Paging system.

2.1.6 Miscellaneous improvements introduced in MP3.20-01

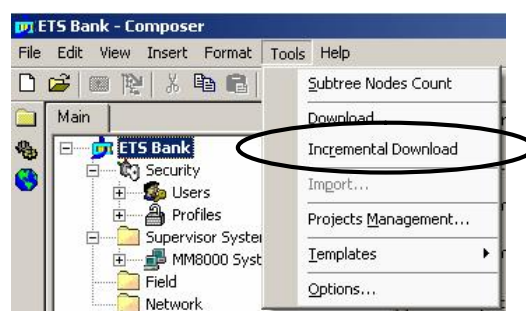
2.1.6.1 Incremental download

The incremental download function is now supported, while that was not the case in MP3.20. As in earlier software release, the command is available in the “Tools” Composer menu.

→ See Composer Technical manual no. '003183_l_en'.

The incremental download allows for a faster download and provides important benefits in terms of general system performance and operation stability. In fact, the status of subsystems that are not affected by modifications do not have to be re-freshed, thus limiting the number of status requests and the consequent temporary inconsistency of the event list.

This improvement is however partially narrowed, as far as NK8000 devices are concerned, since any change affecting the configuration of a subsystem will result in the corresponding NK822x unit being downloaded and then reset, causing the status refresh of all subsystems connected to that unit.

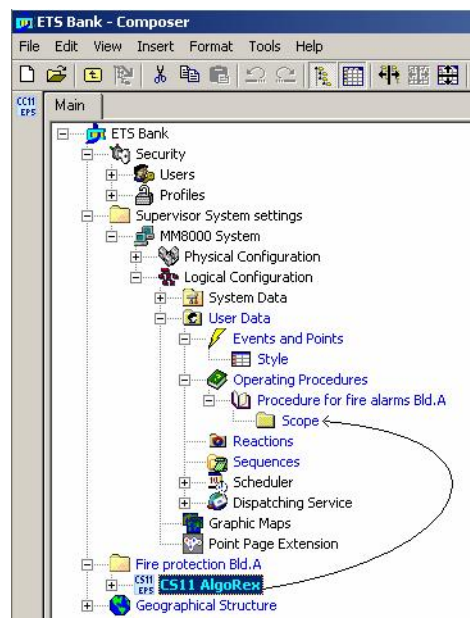


2.1.6.2 Operating procedure scope on system tree

The operating procedure can now be associated to a specific part (tree branch or subtree) of the system configuration tree. This allows differentiating the procedures associated to event treatment based on geographical criteria.

In each operating procedure, a new folder node (the *scope* node) can be added and then used to collect one or more subtrees associated to the procedure.

The subtrees can be added to the scope folder using the drag-and-drop linking technique, from the subtree main node to the folder node (see picture below).



As for any other association criteria, manual assignments can be used to modify the association of individual objects.

→ See MM8000 ICC manual no. '006799_h_en'.

2.1.6.3 Improved performances in SISTORE CX video applications

In MP3.20, due to an external component, MM8000 software was remarkably slow in opening a new live video image. A delay of about 15 seconds might occur upon each new image selection. The new MP3.20-01 includes a new software component that can dramatically improve performances in handling the live video objects on the screen.

Now, the system still requires a certain time (about 5 sec., needed to load in memory the video software modules) when a live video window displays for the very first time after software startup. From that moment on, any new live image displays with a negligible delay.

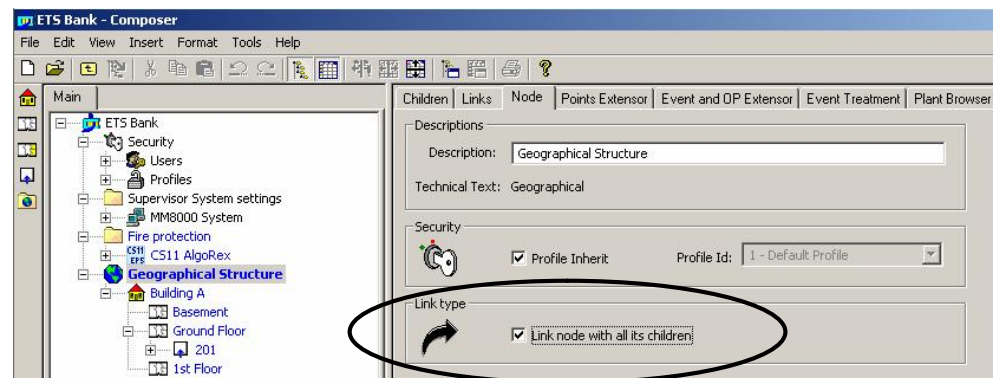
2.1.6.4 More options in the geographical tree linking

In MP3.15-xx and earlier releases, linking a node into the geographical tree only resulted in that specific node being associated to the tree. This approach was changed in MP3.20 and the entire subtree below the linked node actually became part of the geographical tree.

→ See MM8000 ICC manual no. '006799_h_en'.

The new function available in MP3.20-01 is able to combine the two types of behaviour and let you choose the best approach for your specific configuration.

A global option checkbox in the Node tab of the Geographical node allows you for selecting the type of link: single node (uncheck the box) or subtree (check the box).

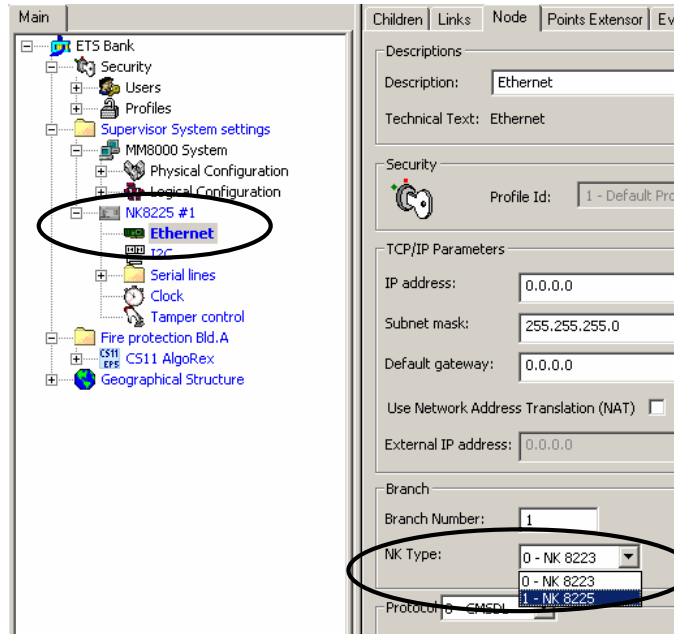


2.1.6.5 Safer NK822x download

In the NK8000 network solutions, the NK8225 unit was introduced with DMS8000 MP3.20 in order to support new BACnet protocol connections.

→ See Network, Fire & Intrusion Connectivity Guide no. '007083_j_en'.

In the new configuration environment, the NK822x units require be identified with a specific type, which is set in the Ethernet Node page (see picture below).



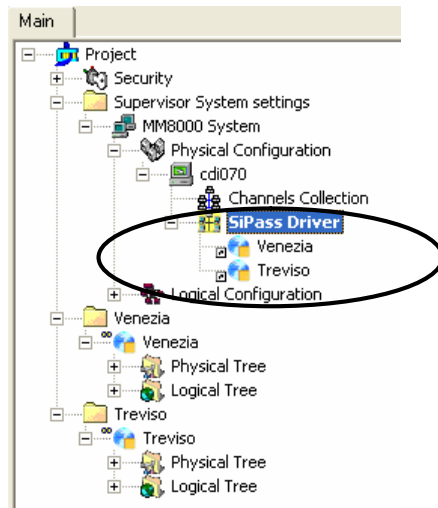
At that point, the following specific checks are provided automatically:

- Erroneous links of units to a wrong driver node are detected, e.g.: an NK8223 unit cannot be linked to the NS8011 BACnet driver.
- Mistakes in the firmware download are avoided by verifying that each type of units is downloaded with a compatible firmware.

2.1.6.6 Multiple SiPass systems

MP3.20-01 allows for multiple links to be inserted to the SiPass Driver node. A **maximum of 4 SiPass systems** can be linked.

Each system should be identified by a unique computer name and IP address.



Note: (only for advanced users who make use of the event simulation functions)
The SiPass simulation flag has been moved from the driver node to each SiPass system node in order to allow for an individual selection.

2.1.6.7 MS-SQL server databases replacing older MS-Access files

In the MM8000 files and services, new MS-SQL-server databases have replaced MS-Access files. Although no user interface functions have been affected, you need to be aware of this change and more precisely:

- For general information, be informed that the SQL databases used by MM8000 are the following: MM8000Srv1, MM8000Srv2, MM8000Support, HSRegistrations. Default names might be customised: → see 2.1.6.9 below
- All SQL databases are created automatically at the end of the setup procedure for both local and remote instance of MSDE or SQL Server. This simplifies the installation procedure (the HDB_Strucgen utility for remote setting is not required and not present any more).
- SQLServer instances with instance name different from the default (MSSQLSERVER) can be supported (e.g. WINCC).

In order to let MM8000 use this instance, during the setup procedure, you can specify the instance name in the format: COMPUTERTNAME\INSTANCENAME (see example in the picture below).



Note that the MM8000 setup procedure first checks whether a local SQL Server (or MSDE) is available locally and then, if not available, prompts you for specifying an external computer name and instance name. This means that the window showed above does not appear if a standard server is present on the installation PC.

Referring to the SQL access security, MM8000 can support both the Windows user authentication (default) and the SQL user authentication.

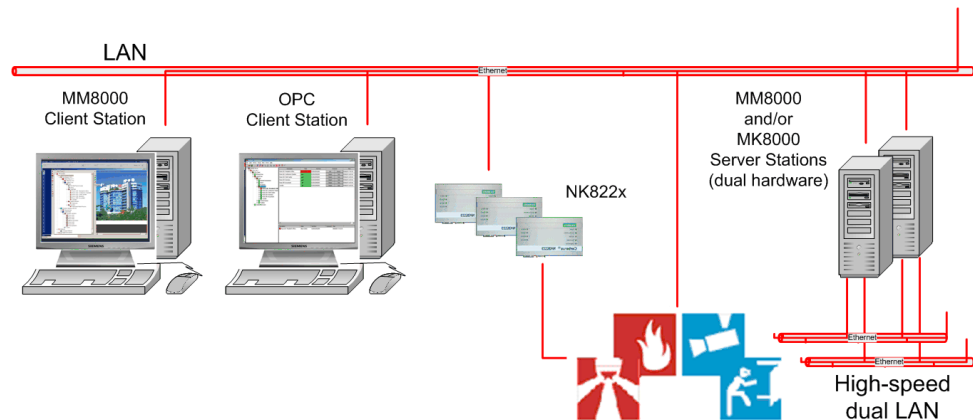
2.1.6.8 Redundant server solution with Marathon

In DMS8000 MP3.20-01 systems, the Marathon EverRun FT software can be used in order to satisfy fault-tolerant requirements.

Marathon EverRun FT is a software application that can provide a Virtual server based on two identical PC machines connected over a local network. MM8000 and MK8000 MP3.20-01 can be installed on the virtual machine, which appears in all respects as a fully standard Windows system. The Marathon software is able to support an uninterrupted service even in case one of the two physical devices (or part of it) fails.

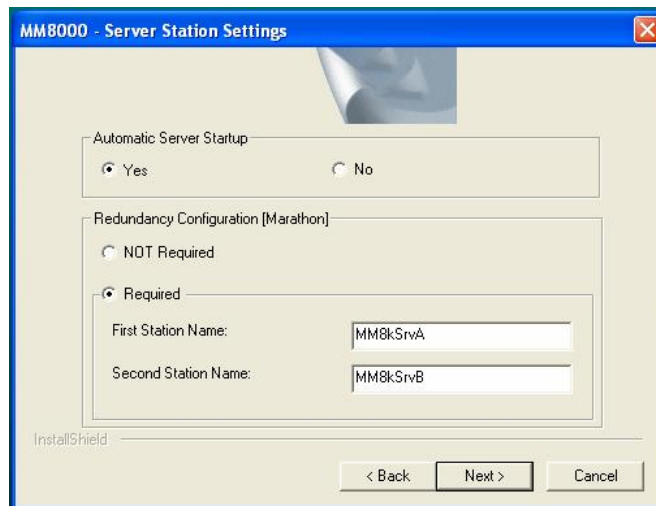
The virtual machine creates a perfect environment for DMS8000 software to run with only one exception, concerning the license key, which requires to be installed on a physical port.

In fact, two identical hardware keys have to be installed on the same port of the two physical machines. The figure below shows the architecture.



When using the redundant option, the MM8000 MP3.20-01 setup procedure requires a few more parameter settings; namely:

- A redundant-solution option is proposed in the stand-alone (= server) installation option.
- If the option is selected, you are prompted to enter the Computer Name (note that the IP address is not valid) of each of the physical machines supporting the Marathon EverRun FT environment.



- The MM8000 License Server is not installed on the virtual machine. Instead, a new MM8000 setup option ('License Machine') has been provided. That setup is meant for the physical machines and only includes the license-related components that need to check the physical ports.

➔ **Please contact support for more information about technical details and purchase options.**

2.1.6.9 Integrated Engineering Tools

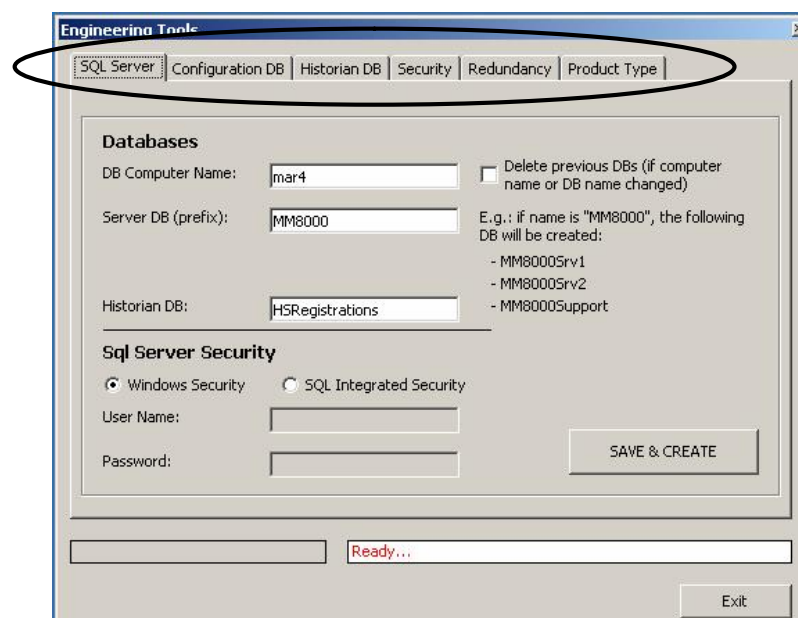
A number of small programs, which used to be separately available in the 'Utilities/Tools' folder, have been integrated into a common environment for an easier and safer access.

As shown in the picture below, the new program:

<installation folder>\Utilities\Tools\Utilities\EngineeringTools.exe

includes 6 tabs that provide for the following configuration items:

- **SQL Server**
this tab allows for customising the SQL Server parameters and security options:
→ refer to the MM8000 ICC manual (006799_i_en), section 3.4.3 / step 4d.
- **Configuration DB**
in this tab, the command for initialising the DSM8000 database (Empty_DB) is available: → refer to the MM8000 ICC manual (006799_i_en), section 3.4.10.2 (Empty Database).
- **Historian DB**
here you can clear and resize the MM8000 history database: → refer to the MM8000 ICC manual (006799_i_en), section 3.4.10.2 (History Database tools).
- **Security**
this tab provides the security-related options concerning the internal DMS8000 user and the MM8000 closed mode setting: → refer to the MM8000 ICC manual (006799_i_en), Definition of terms ("Internal User" definition), section 3.4.10.2 (Special_UT tool), and, most important, section 4.16 (Activating the MM8000 closed mode).
- **Redundancy**
the Redundancy tab contains the new parameters, also available during software setup, for enabling the server redundant option and defining the computer names of the two servers: → see 2.1.6.8 above.
- **Product Type**
the Switch command available in this tab permits to change an MM8000 installation into MK8000 and then vice versa: → refer to the MM8000 ICC manual 006799_i_en, section 3.4.10.2 (SwitchPT tools).
Instead, note that the MK8000 installation cannot switch to MM8000.



2.1.6.10 MODBUS and CDDL/CDSF connectivity via NK8000⁽¹⁾

Although not integrated in the basic package, the support for control units based on the MODBUS and CDDL/CDSF standards is possible using add-on packages. The actual availability of the connectivity solution depends on application-specific model definitions that can be carried out, without any software coding, using a specialised tool.

In any case, a special add-on package and possibly a license is required (please contact support).

Note that these units are all connected via NK822x, equipped with specific firm-ware components. The firmware files (DLL) are installed along with the add-on package and need to be downloaded to the NK822x units before starting the communication.

MODBUS and CDSF modelling

MODBUS and CDSF standards define a general message structure that can be applied to any data communication involving a set of multi-state variables.

In DMS8000 applications, the integration of units working with MODBUS and CDSF application protocols is based on a 3-step approach:

- A general set of *meta-model* definitions must be preliminarily defined in the web-based Poseidon modelling environment (→ refer to FS-DMS document 2004-0217-00-Eng). The meta-models, typically organised per discipline (e.g. fire units meta-model), comprise a superset of all the applicable objects.
- The *meta-models* can be applied in a customisation tool, which is included in the add-on packages, whose task is to define applicable Composer models for the compatible units, i.e. creating *Subsystem models*.
The composer models can make use of the meta-model objects, freely allocate them in the subsystem model structure and finally link the objects states to the actual messages. The result of this task consists of data files for Composer and NK8000 devices.
- In Composer, once the model data file is available, the *Subsystem model* can be applied in the MM8000 projects: the model objects are instanced as data-points for mapping the corresponding states (or MODBUS/CDSF messages) of a real control unit.

→ See MODBUS Add-on manual no. '010015_a_en'.

→ See CDDL/CDSF Add-on manual no. '010016_a_en'.

2.1.6.11 CC11 AlgoRex EP7F Z2.1 – Extinguishing messages

The new version Z2.1 of CC11 AlgoRex (Firmware 7.8x) is fully supported by MM8000 MP3.20-01 in all configurations and protocols but BACnet/IP.

New data and command messages, previously not handled by MP3.20 and earlier releases, concern the extinguishing functions.

Limitations

The new messages are NOT yet supported in the full BACnet configuration, including NK8225 for DESIGO and DMS8000 / NS8011.

⁽¹⁾ For field test only. Please contact customer support.

3 Bug correction

3.1 Corrections in MP3.20

ID	Description	Notes
7295 7867	Download failure in case of corrupted bitmap during the activation phase.	Also repaired in MM8000 MP3.15 Hotfix #14
7086 7116	Occasional disconnections of WinCC OPC Server. Errors in managing the link supervision.	Also repaired in MM8000 MP3.12 Hotfix #02
7253	History database restore troubles (HS.exe module).	Also repaired in MM8000 MP 3.12.01 Hotfix #07
6804 7561	Wrong treatment of some state messages from MF7033.	Also repaired in MM8000 MP3.15 Hotfix #17
7398	Problems with printers: always shown as 'Not Reachable' even if they are on-line and they print from Windows.	Also repaired in MM8000 MP 3.15.01 Hotfix #16 and MP3.15 Hotfix #02
7393	Problems with SiPass Access Control: NPS task error during status request to the SiPass system.	Also repaired in MM8000 MP3.15.02 Hotfix#18
6158	Downloading problem: activation phase could not complete properly. A PC reboot used to be recommended after each download.	
7397 7767	Burle CCTV: command and command feedback problems have been solved as well as status request difficulties.	
6451	Difficulties related to the huge size of project backup.	
7551	Missing events from Cerloop.	Also repaired in MM8000 MP 3.15.02 Hotfix #18
6007	In case of multiple events, status display on the graphic symbol did not always report the most important conditions.	
7305	Problems in printing the History reports.	
6163	Problems during download (JSS module) in case the journaling printer setting is incomplete.	
7560	NS8014 SI410 driver used to be missing in the MM8000 security utilities ("MM8000 Firewall Cnf.vbs", "Special_ut.exe" and "MM8kDCOMset.exe").	
6655	Problems handling node containing the word 'Link' in the description text. The word was misinterpreted and the node was hidden as a system link node.	
7383	In certain conditions, reactions could stop after some hours of running.	Also repaired in MM8000 MP 3.15 Hotfix #02.
6718 6821	SiPass interface (SipassGw module) did not work properly on PCs whose name is longer than 14 characters.	

ID	Description	Notes
6598	An occasional (and erroneous) "Server not available" message used could appear on the MM8000 client screen.	
6836	In the Scheduler configuration tool, selection field associated to "Every week on" was not correctly managed.	
7390	In the CC11 EP7 import procedure, Sinteso detector texts were not properly set (missing sequential number).	
7294	The "Points not inserted in maps" export does not work correctly with special characters.	
7083	Virtual properties reporting the "Bolt Open" and "Lock Supervision" conditions of CS440 zones have been added.	
5663	Missing tool-tip texts in simple treatment mode.	
6797	In Map Maker, the control button text was not handled correctly and it did not appear properly in the preview.	
7569	The History Report layout modified by the user was not saved and then restored properly.	
5826	Wrong time stamp of Scheduler events (e.g. Time programs) in the journaling printouts.	
6315	Message warning the user about the consequences of setting nodes in maintenance mode has been changed in order to make clear that the control unit in the field is not affected by this.	
6212	User Group description texts longer than 64 chars could not be handled properly by the MM8000 client applications.	
6764	Improved performances and robustness of MM8000 servers, now tested to handle over 150 events in 60 seconds.	
7388	User interface problems have been solved using 1600x1200 screen resolution.	Also repaired in MM8000 MP3.15 Hotfix #02
7258	Error in handling the SiPass door status if a door was unlocked while in forced or held status.	
6280	The "Point property" description has been replaced with "Live video" when selecting a Video camera on a graphic map.	
6669	Commands executed from the point property window were not traced in the event protocol.	
7848	Problems in some control commands to CC11 sections including over 70 zones. The correction requires updating the NK822x firmware.	

3.2 Corrections in MP3.20-01

ID	Description	Notes
6929	Installation Procedure MM8000 did not provide any exception message in case the SQL database instance for history service cannot be created. The consequence was that MM8000 server could not start (red status of the History Server). This case is now clearly reported to the user.	
7881	Alarm Printout Due to an error in handling the paper settings, the alarm printout might not work correctly and, in rare cases, block the server functions dealing with events. A specific modification has made this event impossible to occur.	Also repaired in MM8000 MP3.15 Hotfix #21 / 22
7783	Graphic maps: object width control MapMaker: the "Width" field did not have any effect on the size of the object. The problem has been resolved.	
7967	Graphic maps: dot character in scale unit MapMaker did not support the dot character as decimal separator in the scale unit field. This problem has been corrected.	
7969	Graphic maps: large no. of layers The difficulties related to managing a high number of layers (50 or more) have been resolved.	
7999	Graphic maps: tool problem Event treatment settings related to pages might be lost after editing the map. This can no longer occur in MP3.20-01.	
7711	Colour of Map nodes Map nodes remained in blue even after a download	
7865	Map association lost after cut and paste A problem in the cut & paste function used to cause the loss of the map association. This is now fixed.	
8011	Multiple pages on the same point Switching used not to be properly handled (missing foreground) between multiple pages associated to the same point. This is now working properly.	
7924	Composer trouble upon closing project The Composer application might crash when the project is closed.	
7860	Copy and paste of nodes in geographic tree	
7861	An error has been corrected that prevented a complete sub-tree from being copied in the geographic tree	

ID	Description	Notes
8003	Project update errors with direct CK11 link Configurations including a direct CK11 connection via NS8010 driver might fail to be properly updated to MP3.20. This has been resolved.	
8045	SIGMASYS import procedure The 'Output' type of objects did not get properly imported. The defect has been corrected.	
7893	Download reliability In MP3.20, download may fail after a few attempts ('empty_db' was necessary to download again). This defect has been removed.	
7890	Composer troubles in CS6 communic.param. Restored MP3.15-02 projects might be affected by an inconsistency in the CS6 communication parameter node. This problem, which resulted in the Composer application to stop abruptly, has been properly addressed.	
7569	History Browser: Customised views	
7571	Customised Historian Report Layouts cannot be saved and reused properly. The problem has been corrected.	
7666	History Browser: Dual database query MP3.20 fails to handle queries on dual history servers. This is now properly supported.	
7743	History server: Sharing SQL server Multiple MM8000 stations could not share the same SQL-server instance for the database servers. This is now possible.	
7997	MM8000 Server (NPS) Continuous stress by multiple reactions acting on the same point might cause one of the server component to crash. This case has been addressed with a specific enhancement.	
7994	Journaling Services Problem in the journaling printing task after porting an MP3.15 project to MP3.20. Server task might stop operating.	Also repaired in MM8000 MP3.20 Hotfix #05
7995	Journaling Server cannot be replaced In the MP3.20 Composer project, the documented procedure for replacing the MP3.15 Journaling node did not work properly and the service could no longer be re-created in the project. This is now OK in MP3.20-01.	Also repaired in MM8000 MP3.20 Hotfix #05
8006	Problems due to manually triggered reactions Server crash might occur due to manually triggered reactions. This problem has been corrected.	
8055	Geutebrück CCTV Global Camera Number and Offset fields can now be edited.	

ID	Description	Notes
7877	IP camera configuration	
7878	Problem used to occur when downloading IP-Camera over FTP. This has been corrected.	
7932	Problem in getting CS1115 communicating The MM8000 MP3.20 configuration tool was improved (Node Tab and COM0 port) to prevent communication difficulties with CS1115 from occurring.	
8054	Page Manager Server This server task used to have problems related to very specific cases.	Also repaired in MM8000 MP3.12 Hotfix #12
7976	ESPA Pager configuration: Beep code 0 The missing 'Beep Code 0 ' option has been added.	
7995	Troubles with Chinese Windows edition Troubles related to Chinese edition (MM8000 Server task might crash) have been addressed.	Also repaired in MM8000 MP3.20 Hotfix #02
7973	"MM8000 is not running" tooltip message When stopping MM800, the generation of this message has been delayed in order to allow for adequate time for shutting down all software tasks.	
7946	Localisation Chinese A problem related to a wrong character (\$) erroneously appearing in Chinese strings has been addressed.	
7946	Localisation: Help support in Hebrew On-line help was not properly shown on MM8000 Hebrew-localised PC.	
8048	Tooltip texts: localisation impossible Tooltip texts related to the new "notes" functions in the fast treatment line could not be localised.	
7945	NK8000 and Cerloop with multiple MK7022 NK8223 could not properly support more than one MK7022 in the same loop. This limitation has been removed.	
7925	NK8202 tool for MP1.31 devices The NK8202 tool MP3.20 did not support NK8223 MP1.31.	
7918	NK8223: problem in re-establishing communic.	
7920	Problems used to occur in re-establish the communication with NK8223 units after an MM8000 restart. This is now fixed.	

4 Installation and configuration procedures

4.1 MP3.20-01 Software installation

MP3.20-01 is distributed with a complete setup procedure.

For detailed information about the installation procedure, refer to the MM8000 ICC manual (006799_i_en), section 3.

Also, note that new setup options are available in MP3.20-01 for supporting Marathon-based redundant systems. See 2.1.6.8 on page 21.

4.1.1 New systems: installing MP3.20-01

Assuming a stand-alone MM8000 station, the MP3.20 installation procedure includes the following steps:

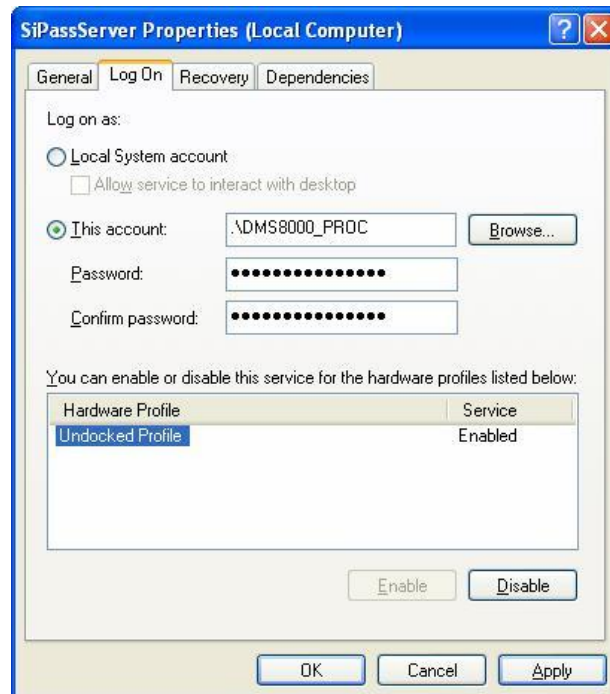
1. Check system requirements. Note the typical required software:
 - If required, the SiPass V2.35 application software should be installed before MM8000, on the same PC or on another machine in the network.
If a previous SiPass version is installed (V2.2 or V2.3), upgrading to latest V2.35 is mandatory before installing MM8000. In this case, we recommend uninstalling SiPass and then installing it again.
 - A local or networked SQL server or SQL Data Engine is mandatory. Note that SiPass also includes the SQL Data Engine software (MSDE 2000), which can be perfectly used by MM8000 as well.
Also, be informed that, at the moment, the use of an external SQL server is not supported by SiPass, which requires a local server of its own.
 - Microsoft software **.NET Framework 1.1 and 2.0** as well as **SQLXML 3.0 SP3** are required by MM8000 3.20-01. All applications are available on the distribution CD and can be installed and used free of any license charge.
 - If required, also install the video application software, according to the specific CCTV device. For detailed instructions, please refer to the related documentation.
 - Other software may be required depending on the specific configuration including NK8000 networks and Alarm Printout services.
→ Please refer to the MM8000 ICC manual (006799_i_en), section 3.1.2.
2. Log on as Administrator.
3. If an old release of MM8000 is installed (e.g. MP3.10/3.15/3.20), then you need to uninstall it and reboot the PC.
4. At this point, if you need to install SiPass, you also have to remove the SQL server Data Engine previously installed by MM8000, and then delete the corresponding folder, typically C:\Program Files\Microsoft SQL Server.
Failing to remove the previous SQL server will result in the SiPass installation not executing properly.
5. Install MM8000 software, which can be: Client, FEP, Stand-alone (Server), or Configuration-only.
6. During the software setup, you have to select the security mode (standard or restricted), the server tasks start-up mode (automatic or manual), and other installation options.
→ If you are not familiar with the setup procedure, please read section 4 of the MM8000 ICC manual (006799_i_en) before installing the software.
7. Reboot the PC.

8. Install the hardware key and enter the license code using the PAK Manager tool. Note that SiPass also requires a license option (Management Station Integration).

Notes:

- **Software License:** all previous Composer and MM8000 licenses must be updated to MP3.20.
- **Localisation:** by default, the DMS8000 software is installed in English. The installation procedure can install texts in another language as long as the required language file (LANG_xxx.ZIP) is included in the setup folder along with the other files (not provided by default). Otherwise, the language may be modified later by means of the 'Language Installation' utility.
→ See MM8000 Localisation Engineering Guide no. '007769_g_en'.
- Be aware that you first need to 'download' the Composer configuration before being able to start the MM8000 application (MM8000 client).
→ See MM8000 ICC manual no. '006799_i_en'.
- If the SiPass server does not run on the same PC as MM8000, then additional installation steps are required on the networked PC where SiPass is installed:
 - 1) In the Windows user list, the SiPass PC should include the MM8000 *Internal User*, by default 'DMS8000-Proc'. Use the same username and password as on the MM8000 PC.
→ Refer to MM8000 ICC Manual (006799) and specifically to section 3.4.11.4.
→ See the 'Security' settings in the new tool described at 2.1.6.9 on page 23.
 - 2) In the SiPassServer Properties, modify the Logon option in order to use the MM8000 *Internal User* as Logon account (see picture).

New in MP3.20-01



5 Migrating from older releases

5.1 Software License

All previous Composer and MM8000 licenses must be updated to MP3.20.

5.2 Localisation

Referring to the localised versions, be informed that the language file (ZIP) must be updated using the MP3.20-01 localisation toolkit, which is new in comparison with MP3.20 (minor changes have been necessary, please contact customer support if you have already localized MP3.20 texts).

5.3 Migrating from MP2.xx

The configuration database migration from MP2 releases – namely MP2.10, MP2.20, MP2.21, and MP2.30 - is possible using MM8000 MP2.31 and MP3.15 as intermediate conversion steps; see documents MM8000 MP2.31 Release Notes (008091_a_en) and MM8000 MP3.15 Release Notes (008901_a_en).

5.4 Migrating from MP3.xx

The migration from MP3 releases (MP3.10-xx, MP3.15-xx, and MP3.20) is possible as described in this section. You perform the following steps:

1. Make sure you have a backup copy of your MM8000 project (Composer backup).
2. Uninstall previous version and reboot.
3. If still present, delete the 'C:\MM8000' folder.
4. Install MM8000 MP3.20-01 as described in section 4.1.
Do not forget to check the software requirements. Note that MP3.20-01 has higher requirements even than MP3.20.
5. Start Composer and restore your project
6. Open the project (note that the opening process may take quite a few minutes).
7. In the MM8000 structure tree, select:
Supervision System Settings → MM8000 System → Logical Configuration → User Data
8. On the Node tab, press the button labelled "Project Update".
The update procedure will start and may present a message window that informs you about forced modifications in the projects. A detailed log is provided in <installation folder>\Logs\NEOUPDATE.LOG.
9. The update procedure will take some minutes, depending on the size of the project. Please wait for the procedure to complete.
- 10.[*Database 3.15-xx and earlier only, not required for 3.20*] In the MM8000 structure tree, select:
Supervision System Settings → MM8000 System → Logical Configuration → User Data → Graphic Maps
On the Node tab, press the button labelled "Map Update" and wait for the graphic map update procedure to complete.
- 11.[*Database 3.15-01 and earlier only, else see below*] If SiPass is used, the Si-Pass node in the Composer tree must be deleted and then created again (note that the deletion will force you to reconfigure the access control points in maps,

reactions, sequences, etc.).

[Database 3.15-02 and later] If SiPass is used, the access control configuration alignment is required.

New in MP3.20-01



After restoring a previous SiPass configuration, it is necessary to add a new user to the list of authorised operators for SiPass. The user data must be:

Username: SiPassUser

Password: SiPassPassword

It is essential to execute a SiPass database alignment before downloading a project that includes a SiPass access control system.

You can either connect to the SiPass application and then align the database (on-line mode) or import the XML database created with MP3.20-01 export tool. The alignment is also necessary (typically in off-line mode) in case the SiPass unit is simulated for test/demo purposes.

→ Please refer to the Access Control Connectivity Guide (009424_b_en).

12. [Database 3.1x and 3.20 (if not already done)] Update Journaling Services.

Select: Supervision System Settings → MM8000 System → Logical Configuration → System Data

Check the “Journaling Service” node: if a journaling printer is configured, note down what template is used.

Then, delete the “Journaling Service” node and then inserted again from the menu in order to install the latest Composer component for this function.

If a journaling printer is used in your configuration, link the printer to the journaling to the template you took note about before deleting.

New in MP3.20-01

13. Download the new project.

14. If used, download the NK822x units with the latest firmware as well as the configuration data.

→ Refer to the NK8000 chapter in the DMS8000 Network Connectivity Guide (007083_j_en), section 4.3.

15. Close Composer.

6 Known issues in MP3.20-01

This is a list of known limitations, problems, bugs and recommended practises regarding MP3.20 at the time this software was released. Compared with previous MP3.15 Release Notes, new and updated points are marked by a side label for easier identification.

6.1 Installation

Updated in MP3.20

MSDE or SQL server

MM8000 requires SQL server or MSDE (MS SQL server Desktop Engine) 2000. If SiPass is installed and integrated with MM8000, then the MSDE installed by SiPass can also be used for MM8000.

Note: The SiPass setup does not accept the MSDE copy installed by MM8000 as valid.

If you have installed MM8000 before SiPass, then proceed as follows:

- Uninstall MM8000 and reboot
- Uninstall MSDE 2000 and reboot
- Delete the MSDE folder, typically C:\Program Files\Microsoft SQL Server
- Install SiPass
- Re-install MM8000

SQL security

MSDE has a security weakness (the empty 'sa' password) that can be fixed by setting your SQL password with a special command available in:

<installation folder>\Utilities\Bat\SetSQLServerPassword.bat

Run this batch file adding your password as parameter (copy and paste the command line into the 'Start → Run' line, then enter the password and click 'OK').

Note: You can also edit this file and replace the "%1" field with your own password. Then save the file with another name (the original is read-only) and run it. Keep the new file in a safe place in case you need to refer to the new SQL password.

If MSDE has been installed along with SiPass, please follow the SiPass documentation concerning this issue.

Troubles with the hardware key

If after the installation the PAK manager cannot recognise the HW key, the sentinel drivers need to be installed manually. In this case launch the set-up located in:

<installation folder>\PAK Manager\Sentinel Drivers\SSD5411-32bit

and follow the instructions; when prompted, select the default installation.

Cannot change domain/PC name

MM8000 does not support a domain/PC name change on the Client or Server after the installation. The solution is to uninstall MM8000, rename the PC, reboot, and then install the software again.

→ See also MM8000 ICC manual (006799_i_en).

Printer spooler

MM8000 requires the printer spooler to be enabled for the configured printers.

Clear History DB

Rare cases of difficulties in the history functions have been reported after installation. In such cases, the FS-DMS support may recommend the use of the program:

→ <installation folder>\Utilities\ToolsUtilities\EngineeringTools.exe

This can clear (and optionally also resize) the database and solve the problem.

Video applications

Video applications require specific software (viewers and other utilities) to be installed before MM8000.

→ Please check requirements in MM8000 ICC manual (006799_i_en)

Windows Server 2003 may not be supported by all SISTORE video applications; if you intend to use this operating system, please check the latest SISTORE documentation

Alarm printout

The alarm printout application, when used on Windows 2000, requires an additional Microsoft software to be installed (Internet Explorer 6). Please check software requirements in MM8000 ICC manual (006799_i_en).

Updated in MP3.20

Windows XP

MM8000 MP3.20 can run on Windows XP SP2. However, depending on the firewall options, the use of this operating system may require special settings. Please check software requirements in MM8000 ICC manual (006799_i_en).

Windows NT 4.0 domain server

As documented in the ICC manual, MM8000 stations can work in a Windows network controlled by a domain server based on Windows 2000 or 2003 server.

In case the server runs on NT 4.0 operating system, MM8000 can still be used, but only in restricted-security mode, manually managing the user list in the NT 4.0 domain server. In other words, MM8000 must first be installed in restricted mode (on Windows 2000 or XP networked stations) and then MM8000 operators must be defined on the domain server as Windows users before being created and downloaded from Composer.

→ For more details about security modes, please refer to the ICC manual (006799_i_en), section 4.2.

Problems with Windows patch KB902400

In some restricted-security environments (typically within a domain), if the DCOM access has been manually limited to the Administrator group, this Windows patch may affect the DCOM settings and remove some Administrators' permissions. This results in the MM8000 software being prevented from running properly.

In case of major problems in running the MM8000 after the KB902400 patch, make sure that, in the DCOM Security setting, the Administrators group is actually enabled for all the "Access permissions".

Note that this problem does not affect the MM8000 standard security setting.

New in MP3.20-01

Pak Manager and 3rd-party PAK codes

Pak Manager shows the 3rd Party PAK codes only if the related Add-on is installed. Instead, if the additional software is not present, the related PAK does not appear in the list. Note also that, if you install the Add-on package after the PAK configuration, you need to re-insert the PAK's in the PAK Manager to get the correct license. Additionally, this implies to restart the MM8000 servers.

New in MP3.20-01

Computer name in the installation procedure

The installation manual erroneously indicates that the IP address may be used to identify the MM8000 server during the installation procedure (see 7.2.1 on page 44). Instead, please always use the PC name.

6.2 Configuration

Download failures

Repetitive download attempts may cause failures. In this case, close Composer after each download and then reopen it. Also try the 'Empty_DB' procedure (see <installation folder>\Utilities\ToolsUtilities\EngineeringTools.exe).

New in MP3.20

Opening MM8000 MP3.15 projects in MP3.20

When opening a large (e.g.: 13,000 or more Composer nodes) MP3.15 project in Composer MP3.20 for the first time, please allow up to 50 minutes.

New in MP3.20

Opening MK8000 MP3.18 projects in MP3.20

Currently, MK8000 3.18 projects must be reconfigured in Composer MP3.20; restore is not supported.

Graphic tool: best practises for bit-map files:

Convert BMP files to JPG (photos) or to GIF (schemas). This will improve the performance considerably.

Graphic tool: names of graphic maps

In Composer, names of graphic maps should never be longer than 50 characters.

Graphic tool: problem filtering AutoCad layers in metric maps

If used for metric maps, the AutoCad importing wizard erroneously notifies a problem when the "CAD selection → Layer" window is selected. The following message is displayed: "Error loading file <filename>" and the AutoCAD file is apparently not imported. Actually, if you then close and re-open the map, the AutoCAD image is shown properly, as it is present in the map in spite of the error message.

Graphic tool: adding CAD fonts

Additional CAD fonts can be manually added in the folder:

<installation folder>\Resources\CADfonts (e.g. C:\MM8000\ Resources\CADfonts)

If not already existing, the 'CADfonts' subfolder must be created.

DMS7000 metafile for CZ10 and CZ12

If a subsequent import is required, then the control unit name should be the same as the original name or the import will not work.

Cannot use USB service key and old parallel keys at the same time

In certain cases, two license keys can be used on the same machine to enable MM8000 and tools separately. Be aware that the old generation of keys (larger in size, see the following picture) will not work properly when the USB key is also installed.

In such cases, you need to remove the USB dongle (i.e. the service key used for enabling Composer) when you need the MM8000 to recognise the parallel key.

CC11 AlgoRex EP7

The following structures are imported in the logical and not in the physical tree:

- 1551 - Digital output;
- 1552 - Digital output supervised;
- 1560 - Internal horn;
- 1561, 1564, 1565 - External horn;
- 1562 attribute = RTFIRE – "Alarm" remote transmission channel;
- 1562 attribute = RTFAULT – "Fault" remote transmission channel;

- 1562 attribute = RTOTHER – “Other” remote transmission channel.

New in MP3.20-01**CC11 EP7F Z2.1**

The new version Z2.1 of CC11 AlgoRex is supported by MM8000 MP3.20-01. New data and command messages are concerning extinguishing functions.

“Move” function in AlgoRex tool

The AlgoWorks “move” function, which allows CC11 objects to be moved in the tree structure, **is not fully supported in MM8000 tools** (ref. defect #5521). In fact, the import procedure can treat this case correctly when the moved objects maintain the same parent node (e.g. Zone is moved from the last position to the first position within the same Section).

Instead, moving objects and changing the parent node (e.g. Zone is moved from Section 1 to Section 2) is not supported. The import operates by deleting and re-creating the object in the MM8000 structure. Note that this results in the previous links of the moved object being lost, e.g. a fire zone will disappear from its map or its reaction. You then have to reconfigure the object in maps and reactions, etc.

SI410/420 Sintony

The Sintony control unit should be configured to enable the Partition setting while in power supply and communication failure conditions.

Modifications to the control unit via local terminal configuration should be disabled in order to prevent inconsistencies with the MM8000 database.

Be informed that, in MP3.15-01 and later versions, SI410 inputs do not generate alarm events. Alarms are instead generated at partition level, so that an easier alarm treatment can be provided.

Updated in MP3.20
(reduced list of issues)**Lock/Unlock MM8000 stations**

Before locking the MM8000 station in closed mode, please read carefully the ‘Activating the MM8000 closed mode’ chapter of the ICC manual (doc. no.006799_i_en).

New in MP3.20-01**STT20**

STT20 metafile needs to be re-imported after restoring an MP 3.15 projects, else the download may fail.

6.3 Functionality

FEP stations require server when starting up

Distributed configurations including FEP stations: When you start up a FEP station, you must ensure that the MM8000 server is already up and running.

Low virtual memory events

Depending on the specific configuration and on the PC hardware characteristics, MM8000 software may use up the memory resources in Windows and cause the “Low virtual memory” error message to display. Should that occur, you can **adjust the virtual memory size** (i.e. the size of the *paging* file where Windows swaps the active memory areas on disk). Using the Administrator login, proceed as follows:

- Start → Settings → Control Panel → System → Advanced tab → Performance Options → Virtual memory “change” button.
- At this point, in the disk drive list that appears, select the Windows 2000 System disk drive (typically C:) and set the size values as follows:

	Client / FEP	Stand-alone / Server
Initial size	1000 MB	2000 MB and more ⁽¹⁾
Maximum size	4095 MB	4095 MB

New in MP3.20

Screen savers

Please abide by the following guidelines if you wish to use a Screen saver while running MM8000:

- Use only standard Windows Screen savers;
- Do not configure password protection for Screen savers.

Standard Windows Screen savers allow for the Event icon area and the Summary bar to be present while the Screen saver occupies the Work area. Failure to comply with the guidelines listed above may result in problems with the MM8000 system.

Acrobat writer/distiller

Installing MM8000 typically affects the behaviour of the Acrobat Writer/Distiller, which will not work properly any more, even uninstalling MM8000.

M35 GSM modem and character set in SMS messages

In SMS notification messages, the M35 modem (ref. M35 manual “MC35_ATC_01_V05.00”) is configured to support the GSM 03.38 (7-bit) alphabet set, which includes a minimum set of characters.

Updated in MP3.20

In most cases, message texts in Western languages are adapted to the GSM set, whereas other languages (e.g. Russian, Chinese, Hebrew, etc.) are not supported (note that texts including invalid characters are discarded by the modem and the related message is lost).

In general, we recommend using plain ASCII characters in SMS messages. However, the customisation of some special characters is possible in the localisation procedure. Please refer to MM8000 Localisation Engineering Guide, document no. ‘007769_g_en’.

¹ Initial size may be extended up to 3000 MB in case low memory events still occur.

Event dispatching

In Windows XP, the dispatching steps of operating procedures do not work properly if the Windows Address Book or Outlook Express is open while MM8000 operates. Ensure that these applications are closed.

Removing history full events

In case the SQL history archive is automatically backed up, the MM8000 events related to archive full condition are no longer necessary to notify the operator. In such cases, we recommend setting 'out of scan' the History node of the Station in the MM8000 Physical Structure.

SiPass

– Reader name, FLN name and structure

This information cannot be acquired from SiPass; this prevents MM8000 from representing the entire physical structure of the devices.

– Object states and events

The following information is not transmitted to MM8000:

- Door Block and Door Open (frame contact)
- ACC Tamper, Power Fault, and Battery Operation
- Area and Elevator objects are not visible at all
- Soft Anti-pass back

– Access Denied events are not transmitted to MM8000 in case of:

- Card not yet active
- Time schedule violation
- Expired card
- Void card
- Wrong PIN
- Access with Daily code

– The use of SiPass **Alarm Classes** with MM8000 is affected by some limitations. Please refer to the SiPass chapter in the DMS8000 Access Control Connectivity Guide (009424_b_en).

– The SiPass **functions which are also available in MM8000** - e.g. event notification (message forwarding in SiPass), reactions and sequences (event tasks in SiPass) - should be clearly assigned to either of the two systems, according to specific requirements, thus preventing any functional overlap.

Updated in MP3.20-01

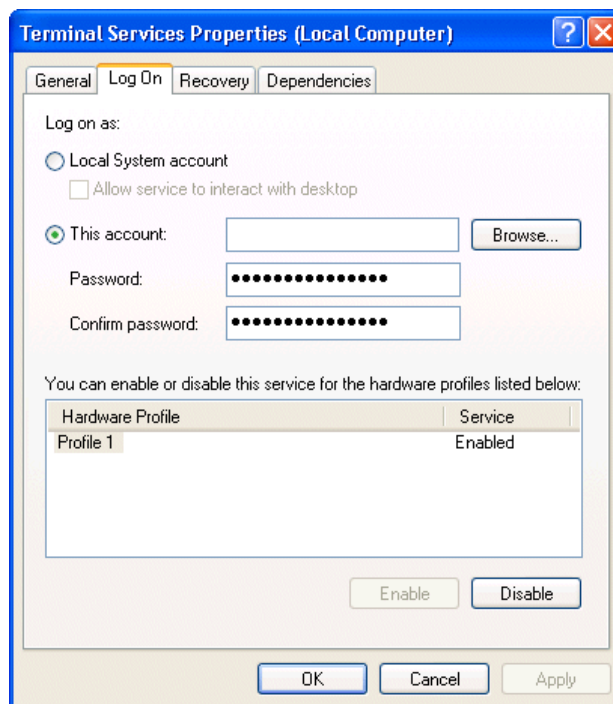
SiPass V2.35 software is not provided in the MM8000 CD (contact Access Control customer support if you do not already have this software). Please do not use earlier SiPass releases.

Note also that **SiPass export files** generated with MM8000 3.15-xx are not compatible with new 3.20-01 when CC30 controllers are used. In this case, please generate a new export file.

Remote SiPass server (Windows XP only)

If the SiPass server is installed on a remote PC, the “Log On” properties must be changed on the remote PC so that the SiPass server can communicate with MM8000. Perform the following steps:

- 1 Log on to the PC with the SiPass server.
- 2 Right-click on ‘My Computer’ and select ‘System Tools → Local User and Groups → Users’.
- 3 Add the new user ‘DMS8000_PROC’ and assign administrator rights (for detailed instructions, please refer to standard Windows documentation).
- 4 Right-click on ‘My Computer’ and select ‘Services and Applications → Services’.
- 5 Double-click on the SiPass service and select the ‘Log On’ tab.



Updated in MP3.20

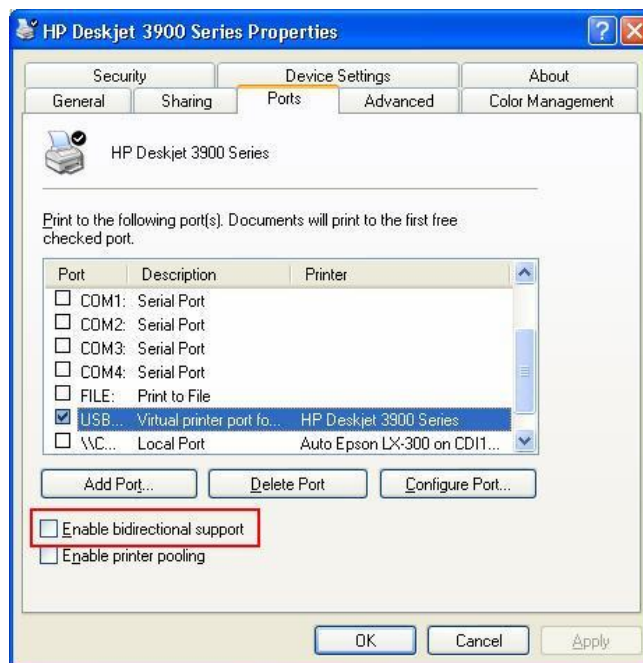
- 6 Select the ‘This Account’ button and then select ‘Browse’.
- 7 In the ‘Select User’ window, select the ‘Advanced’ button.
- 8 Select ‘Find Now’ and select DMS8000_PROC.
- 9 Restart the PC.

From MM8000, select ‘Change Server’ in the Composer Properties Management window, and select the SiPass server to connect.

USB Printers

If a USB printer reports a fault condition in MM8000, try to remove the Bidirectional Control option in the printer properties page. Please follow this procedure:

1. Open the USB printer properties window (see picture below).
2. Select the "Ports" tab.
3. Uncheck the option "Enable bidirectional support".
4. Cancel all pending jobs in the spooler (most of them will be named "Check"). If you are not able to delete them, reboot the PC and make sure that the spooler list is empty.
5. Retry MM8000 printouts.



SISTORE AX

Note that SISTORE AX can support only one client at the time. When one MM8000 station is connected to the video unit to show video images, no other station can connect at the same time.

SISTORE MX

In general, we recommend that you use SISTORE MX V2.58 or upgrade to this version. Depending on the version installed, the following difficulties may be encountered:

- 1 The SISTORE MX 2.55 must be used with the remote player of SISTORE MX 2.57 or later.
- 2 The archive player shows the control buttons (e.g. Play, Stop, Rewind, etc.) on the very right of the screen and therefore they are not visible most of the time.
- 3 Note: The Replay Toolbar (WC1) in SISTORE MX 2.57 player shows up together with the timeline on the left, thus covering the timeline; the actual replay toolbar containing recorded video controls is located on the right and is not visible. In SISTORE Remote Viewer 2.45 and 2.50 you could only see this part of the toolbar (without the timeline).
- 4 Recording with Pre-trigger (e.g. Automatic recording in case of an event) is not possible.
- 5 Note: In order to work with MM8000, SISTORE MXPro 2.45 and 2.50 requires the "Enable Software trigger" checkbox to be checked in the configuration. Instead, with SISTORE MX 2.55 and 2.57, the "Long time recording" schedule also has to be enabled to work-around a defect in the communication with MM8000. Unfortunately, this solution prevents the pre-trigger function from working.
- 6 Stopping the recording is not possible from the MM8000 (Recording is only stopped when the configured delay expires in SISTORE).

Updated in MP3.20

SISTORE MX

IP cameras can now be connected to the MX.

Updated in MP3.20-01

SISTORE CX

Improved performances in live video displaying: → see 2.1.6.3 on page 19.

7 Documentation

Updated in MP3.20-01

All documents were updated to include the new features added in MP3.20. An updated edition of the Release Notes has been provided for documenting MP3.20-01 release. Also, in MP3.20-01, an updated edition of the Application & Planning document has been released.

7.1 Sales documentation

Product Datasheet (document no. 006882 rev.“h”)

A brief summary of the features provided by the MM8000, available architectures, and networks. It also includes information about system limits and subsystems supported.

System Description (document no. 006883 rev.“h”)

This document is similar to the datasheet, but very much expanded, and more detailed. It describes the MM8000 system and the user interface functionality.

Sales Guide (document no. 007086 rev.“d”)

This guide presents the most important sales arguments. Also, a FAQ section provides the answer to some typical questions.

Sales Presentation (document no. 006961)

This is a PowerPoint presentation provided by the marketing department. It can be modified, or used as is to show potential customers what the MM8000 can do.

New in MP3.20-01

DMS8000 Application & Planning (document no. 008084 rev. “f” – MP3.20_01)

This document contains a brief discussion of product marketing strategy for all FSP-DMS products, and a moderate level of detail about the architectural configurations supported by MM8000 MP3.20-01.

Tender Specifications (document no. 006884 rev.“e”)

This document is currently in the standard Siemens format, but it is designed for use and adaptation(s) by independent contractors responsible for selecting and managing the installation and upgrades of a security system for the final customer.

Offer Template (document no. 007087 rev.“f”)

This is intended as an aid for sales people in the preparation of initial and final offers.

7.2 Technical documentation

MM8000 Operation Manual (document no. 006798 rev.“h”)

This manual is an operation guide, meant for end users.

MM8000 Installation, Configuration and Commissioning (ICC) (document no. 006799 rev.“i”)

The ICC guide provides step-by-step procedures for installation and configuration of the MM8000. During configuration, this manual should be used in tandem with the DMS8000 Connectivity Configuration guides.

The installation checklist at the end of the document is intended to be used as an aid in gathering information from the customer prior to beginning configuration.

**DMS8000 Connectivity Configuration Guides:
Network, Fire, and Intrusion (documents no. 007083 rev.“j”)
Access Control (document no. 009424 rev.“b”)
Video (document no. 009425 rev.“b”)**

This set of documents include: the DMS8000 Network Fire and Intrusion Configuration guide, the DMS8000 Access Control Configuration guide, and the DMS8000 Video Configuration guide. The set is shipped with all FSP-DMS products and contains information about installing Composer, connecting and activating the hardware (dongle) key, setting up a new project, and configuring the networks and sub-systems supported by DMS8000 products. This should be used in conjunction with the ICC guide.

DMS8000 Graphical Map Configuration Guide (document no. 008904 rev.“b”)

This manual described in details the MM8000 graphic editor.

Composer Technical Manual document no. 003183 rev. “l”)

This guide explains how to use Composer in general. It provides a reference to commands and instructions used during the system configuration. Note that the latest edition of this manual describes the new functions that the MP3.20 version Composer can provide.

MM8000 Localisation Guidelines (document no. 007769 rev.“g”)

This guide provides assistance with the localisation of the MM8000 MP3.20 software, including information about using the Catalyst tool.

Maintenance & Troubleshooting

Note: This document is no longer provided. Please refer to the on-line support services (see next section).

Quick reference guides

These short guides (4 to 8 pages A5 format) can be used as reference papers for the most typical software functions. The list of available guides includes:

- Operation (document no. 008082 rev.“d”)
- Installation, Function & Configuration Commissioning (doc.no.006799 rev.“i”)
- Graphical maps (document no. 008906 rev.“b”)
- Composer Configuration (document no. 008081 rev.“d”)

New in MP3.20-01

Release Notes (document no. 009421 rev.“b”- MP3.20_01)

This document. An updated edition has been issued for MP3.20-01. It includes all information concerning MP3.20 and fully replaces the previous edition.

7.2.1 MP3.20 documentation errata

New in MP3.20-01

MP3.20 Release Notes (009421_a_en)

- It erroneously reported that SiPass FLN3a bus objects could not be supported, whereas they can be safely used in configurations including SiPass.
- It also indicated that MM8000 CD included the latest SiPass software, while this is actually not the case.

MM8000 ICC (006799_i_en)

- At pag.26, installation step 4f, the document incorrectly stated that IP address could be used to identify the server: please use the PC name only.

STT2410 OPC specification (009849_a_en)

- This document was distributed with a wrong document number (8949 instead of the correct number 9849).

8 Customer support links & resources

8.1 Siemens FS

Updated in MP3.20-01

Our Customer Support Center intranet site at:

<http://intranet10.sbt.siemens.com/divisions/fs/customer+support+center/>

provides useful information and links. In the Online Support section of this intranet page, software downloads and known product issues can be found in the PSP (password-protected Product Support Platform).

→ Please note the support mailbox: fs.support.sbt@siemens.com.

8.2 Microsoft

General support about Microsoft Windows can be found at:

<http://support.microsoft.com/directory/>

8.2.1 Windows 2000

Windows 2000 support

<http://www.microsoft.com/windows2000/default.mspx>

Security issues:

<http://www.microsoft.com/technet/security/default.mspx>

8.2.2 Windows XP

Technical information, including deployment guides

http://www.microsoft.com/resources/documentation/Windows/XP/all/reskit/en-us/prork_overview.asp

Windows XP support

<http://www.microsoft.com/windowsxp/support/default.mspx>

Windows XP SP2 - Frequently Asked Questions (FAQs)

<http://www.microsoft.com/windowsxp/sp2/default.mspx>

Windows XP SP2 – How to ...

<http://www.microsoft.com/windowsxp/sp2/howto/default.mspx>

Security issues

<http://www.microsoft.com/technet/security/default.mspx>

8.3 Adobe Acrobat

To view the PDF document is necessary to install the program Adobe Acrobat Reader. You can find its free version at:

<http://www.adobe.com/products/acrobat/readstep.html>

Siemens Switzerland Ltd
Building Technologies Group
International Headquarters
Fire Safety & Security Products
Gubelstrasse 22
CH-6301 Zug
Tel +41 41 724 24 24
Fax +41 41 724 35 22
www.sbt.siemens.com

Document no. **009421_b_en**
Edition 11.2006

MM8000 Technical Material
Section 1