

Photo Resistive Flame Detectors

QRB1... QRB3...

Photo resistive detectors for use with Siemens burner controls, for the supervision of oil flames in the visible light spectrum.

The QRB... are used primarily in connection with oil burner controls in intermittent operation.

The QRB... and this Data Sheet are intended for use by OEMs which integrate the flame detectors in their products.

Use

The QRB... are designed for the supervision of yellow-burning oil flames in connection with burner controls type LAL..., LME7..., LMO..., LMV... and LOA... They are suited for frontal or lateral (90°) illumination.

The maximum spectral sensitivity of the QRB... is about 600 nm, thus giving full consideration to the maximum level of visible light radiation of yellow-burning oil flames. Since the QRB... also acquires certain parts of the radiation spectrum of other light sources (boiler room lighting, solar radiation, etc.), the standard regulations regarding safety in connection with extraneous light still apply.

Warning notes



To avoid injury to persons, damage to property or the environment, the following warning notes must be observed!

Do not open, interfere with or modify the flame detector!

- All activities (mounting, installation and service work, etc.) must be performed by qualified staff
- Before making any wiring changes in the connection area, completely isolate the plant from mains supply (all-polar disconnection). Ensure that the plant cannot be inadvertently switched on again and that it is indeed dead. If not observed, there is a risk of electric shock hazard
- Ensure protection against electric shock hazard by providing adequate protection for the connection terminals. If this is not observed, there is a risk of electric shock
- Each time work has been carried out (mounting, installation, service work, etc.), check to ensure that wiring is in an orderly state and make the safety checks as described in «Commissioning notes». If this is not observed, there is a risk of loss of safety functions and a risk of electric shock
- Fall, shock or damage to the housing can adversely affect the safety functions. Such detectors must not be put into operation even if they do not exhibit any damage. If this is not observed, there is a risk of loss of safety functions and a risk of electric shock

Mounting notes

- Ensure that the relevant national safety regulations are complied with
- Tightening torque clamp: 0.3 Nm

Installation notes

- Always run the detector cable separate from other cables, especially from the high-voltage ignition cable, while observing the greatest possible distance

It is important to achieve practically disturbance- and loss-free signal transmission:

- Never run the detector cable together with other cables
 - Line capacitance reduces the magnitude of the flame signal
 - Use a separate cable
- Observe the permissible length of the detector cables (refer to «Technical data»)

Commissioning notes

- The intensity of the radiation of light on site is checked by measuring the detector current
- For information about the measuring circuit and the minimum detector current values required, refer to the Data Sheet of the relevant type of burner control

Standards and certificates



Note!
Only in connection with burner controls!



EAC Conformity mark (Eurasian Conformity mark)



ISO 9001:2008
ISO 14001:2004
OHSAS 18001:2007



China RoHS
Hazardous substances table:
<http://www.siemens.com/download?A6V10883536>

Service notes

When cleaning the detector, never use burner cleansing spray. Always use a clean and dry cloth exclusive.

Mechanical design

| | |
|---------------------|--|
| General | Compact photo resistive flame detector with infused 2-wire thermoplastic cable. The detector is available with normal sensitivity, high sensitivity, or selected higher sensitivity, with or without flange and clamp or soft plastic plug (refer to «Type summary»). |
| QRB1...A | Flame detector without soft plastic plug. This type of detector is fitted with the help of a flange. A guide groove in the securing flange and a cam on the detector clamp ensure vibration-free mounting and make certain that the photo resistive flame detector is always correctly sited towards the flame. |
| QRB1...B | Flame detector with soft plastic plug. For mounting this type of detector on the burner, all that is required is a hole with a lateral groove (refer to «Dimensions») The sealing and securing ribs of the soft plastic plug hold the detector firmly in the hole. The guide spring guarantees correct alignment of the photo resistive flame detector with the flame. |
| Accessories QRB1... | <ul style="list-style-type: none">• Small flange, 21 mm spacing, plastic version• Large flange, 36 mm spacing, plastic version• Clamp, plastic version |
| QRB3... | The detector is supplied with a metal protective tube having an external diameter of 17 mm. This type of detector is always secured with a flange and a clamp (refer to «Accessories QRB3...»). |
| Accessories QRB3... | <ul style="list-style-type: none">• Flange, metal version• Clamp, metal version |

Type summary

QRB1...




¹⁾ These types of flame detectors are not available for order in all countries!

| Article no. | Type ¹⁾ | Sensitivity / casing color | | | Casing length "g" (mm) | Visible cable length "l" (cm) | Stripped length "m" (mm) | Plug | End of cable | | | Accessories | | |
|---------------------|--------------------|----------------------------|------------|-----------------------|---------------------------|----------------------------------|-----------------------------|------|--------------|---------|----------|------------------------|------------------------|---------|
| | | Normal / black | High / red | High, selected / blue | | | | | Plug AGK... | Ferrule | Skinning | included | | mounted |
| | | | | | | | | | | | | Small flange and clamp | Large flange and clamp | |
| BPZ:QRB1A-A020B40A | QRB1A-A020B40A | ● | --- | --- | 50 | 20 | 40 | --- | --- | ● | ● | --- | --- | --- |
| BPZ:QRB1A-A033B40B | QRB1A-A033B40B | ● | --- | --- | 50 | 33 | 40 | ● | --- | ● | ● | --- | --- | --- |
| BPZ:QRB1A-A035B40A | QRB1A-A035B40A | ● | --- | --- | 50 | 35 | 40 | --- | --- | ● | ● | --- | --- | --- |
| BPZ:QRB1A-A035B40H | QRB1A-A035B40H | ● | --- | --- | 50 | 35 | 40 | --- | --- | ● | ● | --- | --- | ● |
| BPZ:QRB1A-A048B70B | QRB1A-A048B70B | ● | --- | --- | 50 | 48 | 70 | ● | --- | ● | ● | --- | --- | --- |
| BPZ:QRB1A-A050B40A1 | QRB1A-A050B40A1 | ● | --- | --- | 50 | 50 | 40 | --- | --- | ● | ● | ● | --- | --- |
| BPZ:QRB1A-A050B40A2 | QRB1A-A050B40A2 | ● | --- | --- | 50 | 50 | 40 | --- | --- | ● | ● | --- | ● | --- |
| BPZ:QRB1A-A050B70A | QRB1A-A050B70A | ● | --- | --- | 50 | 50 | 70 | --- | --- | ● | ● | --- | --- | --- |
| BPZ:QRB1A-A050B70A1 | QRB1A-A050B70A1 | ● | --- | --- | 50 | 50 | 70 | --- | --- | ● | ● | ● | --- | --- |
| BPZ:QRB1A-A050B70A2 | QRB1A-A050B70A2 | ● | --- | --- | 50 | 50 | 70 | --- | --- | ● | ● | --- | ● | --- |
| BPZ:QRB1A-A068B70B | QRB1A-A068B70B | ● | --- | --- | 50 | 68 | 70 | ● | --- | ● | ● | --- | --- | --- |
| BPZ:QRB1A-A070B70A | QRB1A-A070B70A | ● | --- | --- | 50 | 70 | 70 | --- | --- | ● | ● | --- | --- | --- |
| BPZ:QRB1A-A070B70A1 | QRB1A-A070B70A1 | ● | --- | --- | 50 | 70 | 70 | --- | --- | ● | ● | ● | --- | --- |
| BPZ:QRB1A-A070B70A2 | QRB1A-A070B70A2 | ● | --- | --- | 50 | 70 | 70 | --- | --- | ● | ● | --- | ● | --- |
| BPZ:QRB1A-A080B70A | QRB1A-A080B70A | ● | --- | --- | 50 | 80 | 70 | --- | --- | ● | ● | --- | --- | --- |
| BPZ:QRB1A-A148B70B | QRB1A-A148B70B | ● | --- | --- | 50 | 148 | 70 | ● | --- | ● | ● | --- | --- | --- |
| BPZ:QRB1A-A150B70A | QRB1A-A150B70A | ● | --- | --- | 50 | 150 | 70 | --- | --- | ● | ● | --- | --- | --- |
| BPZ:QRB1A-A150B70A2 | QRB1A-A150B70A2 | ● | --- | --- | 50 | 150 | 70 | --- | --- | ● | ● | --- | ● | --- |
| BPZ:QRB1A-B036A25A | QRB1A-B036A25A | ● | --- | --- | 65 | 36 | 25 | --- | --- | --- | --- | --- | --- | --- |
| BPZ:QRB1A-B080B70A | QRB1A-B080B70A | ● | --- | --- | 65 | 80 | 70 | --- | --- | ● | ● | --- | --- | --- |
| BPZ:QRB1A-B110B70A | QRB1A-B110B70A | ● | --- | --- | 65 | 110 | 70 | --- | --- | ● | ● | --- | --- | --- |
| BPZ:QRB1B-A014U25B | QRB1B-A014U25B | --- | ● | --- | 50 | 14 | 25 | ● | 53.0 | --- | ● | --- | --- | --- |
| BPZ:QRB1B-A017A25B | QRB1B-A017A25B | --- | ● | --- | 50 | 17 | 25 | ● | --- | --- | --- | --- | --- | --- |
| BPZ:QRB1B-A018B40B | QRB1B-A018B40B | --- | ● | --- | 50 | 18 | 40 | ● | --- | ● | ● | --- | --- | --- |
| BPZ:QRB1B-A033B40B | QRB1B-A033B40B | --- | ● | --- | 50 | 33 | 40 | ● | --- | ● | ● | --- | --- | --- |
| BPZ:QRB1B-A035B40A | QRB1B-A035B40A | --- | ● | --- | 50 | 35 | 40 | --- | --- | ● | ● | --- | --- | --- |
| BPZ:QRB1B-A035B40H | QRB1B-A035B40H | --- | ● | --- | 50 | 35 | 40 | --- | --- | ● | ● | --- | --- | ● |
| BPZ:QRB1B-A035B40A1 | QRB1B-A035B40A1 | --- | ● | --- | 50 | 35 | 40 | --- | --- | ● | ● | ● | --- | --- |
| BPZ:QRB1B-A042B20B | QRB1B-A042B20B | --- | ● | --- | 50 | 42 | 20 | ● | --- | ● | ● | --- | --- | --- |
| BPZ:QRB1B-A048B40B | QRB1B-A048B40B | --- | ● | --- | 50 | 48 | 40 | ● | --- | ● | ● | --- | --- | --- |

| Article no. | Type 1) | Sensitivity / casing color | | | Casing length "g" (mm) | Visible cable length "l" (cm) | Stripped length "m" (mm) | Plug | End of cable | | | Accessories | | |
|---------------------|-----------------|----------------------------|------------|-----------------------|---------------------------|----------------------------------|-----------------------------|------|--------------|---------|----------|------------------------|------------------------|---------|
| | | Normal / black | High / red | High, selected / blue | | | | | Plug AGK... | Ferrule | Skinning | included | | mounted |
| | | | | | | | | | | | | Small flange and clamp | Large flange and clamp | Bride |
| BPZ:QRB1B-A048B70B | QRB1B-A048B70B | --- | ● | --- | 50 | 48 | 70 | ● | --- | ● | ● | --- | --- | --- |
| BPZ:QRB1B-A050B70A | QRB1B-A050B70A | --- | ● | --- | 50 | 50 | 70 | --- | --- | ● | ● | --- | --- | --- |
| BPZ:QRB1B-A050B70A1 | QRB1B-A050B70A1 | --- | ● | --- | 50 | 50 | 70 | --- | --- | ● | ● | ● | --- | --- |
| BPZ:QRB1B-A050B70A2 | QRB1B-A050B70A2 | --- | ● | --- | 50 | 50 | 70 | --- | --- | ● | ● | --- | ● | --- |
| BPZ:QRB1B-A068B70B | QRB1B-A068B70B | --- | ● | --- | 50 | 68 | 70 | ● | --- | ● | ● | --- | --- | --- |
| BPZ:QRB1B-A070B70A | QRB1B-A070B70A | --- | ● | --- | 50 | 70 | 70 | --- | --- | ● | ● | --- | --- | --- |
| BPZ:QRB1B-A070B70A1 | QRB1B-A070B70A1 | --- | ● | --- | 50 | 70 | 70 | --- | --- | ● | ● | ● | --- | --- |
| BPZ:QRB1B-A070B70A2 | QRB1B-A070B70A2 | --- | ● | --- | 50 | 70 | 70 | --- | --- | ● | ● | --- | ● | --- |
| BPZ:QRB1B-A148B70B | QRB1B-A148B70B | --- | ● | --- | 50 | 148 | 70 | ● | --- | ● | ● | --- | --- | --- |
| BPZ:QRB1B-B017A25B | QRB1B-B017A25B | --- | ● | --- | 65 | 17 | 25 | ● | --- | --- | --- | --- | --- | --- |
| BPZ:QRB1B-B035B40A | QRB1B-B035B40A | --- | ● | --- | 65 | 35 | 40 | --- | --- | ● | ● | --- | --- | --- |
| BPZ:QRB1B-B036A25A | QRB1B-B036A25A | --- | ● | --- | 65 | 36 | 25 | --- | --- | --- | --- | --- | --- | --- |
| BPZ:QRB1B-C036B40A | QRB1B-C036B40A | --- | ● | --- | 105 | 36 | 40 | --- | --- | ● | ● | --- | --- | --- |
| BPZ:QRB1B-C048A40B | QRB1B-C048A40B | --- | ● | --- | 105 | 48 | 40 | ● | --- | --- | --- | --- | --- | --- |
| BPZ:QRB1B-C060B40A | QRB1B-C060B40A | --- | ● | --- | 105 | 60 | 40 | --- | --- | ● | ● | --- | --- | --- |
| BPZ:QRB1B-D025B40B | QRB1B-D025B40B | --- | ● | --- | 137 | 25 | 40 | ● | --- | ● | ● | --- | --- | --- |
| BPZ:QRB1B-D042B20B | QRB1B-D042B20B | --- | ● | --- | 137 | 42 | 20 | ● | --- | ● | ● | --- | --- | --- |
| BPZ:QRB1C-A050B40A | QRB1C-A050B40A | --- | --- | ● | 50 | 50 | 40 | --- | --- | ● | ● | --- | --- | --- |
| BPZ:QRB1C-A050B40H | QRB1C-A050B40H | --- | --- | ● | 50 | 50 | 40 | --- | --- | ● | ● | --- | --- | ● |
| BPZ:QRB1C-B030A25A | QRB1C-B030A25A | --- | --- | ● | 65 | 30 | 25 | --- | --- | --- | --- | --- | --- | --- |
| BPZ:QRB1C-B080B70A | QRB1C-B080B70A | --- | --- | ● | 65 | 80 | 70 | --- | --- | ● | ● | --- | --- | --- |

Type summary (cont'd)

Accessories QRB1...
(version without plug)



| | Item | Part number ¹⁾ |
|---|-----------------------------|---------------------------|
|  | Small flange, 21 mm spacing | 4 241 1462 0 |
|  | Large flange, 36 mm spacing | 4 241 1600 0 |
|  | Clamp | 4 186 1096 0 |

¹⁾ To be specified when ordering individual items

QRB3 (green)

| Article no. | Type | Flange | Clamp | Feature | Sensitivity |
|--------------|----------|---------|---------|-----------------|-------------|
| BPZ:QRB3 | QRB3 | Without | Without | Protective tube | Normal |
| BPZ:QRB3(1) | QRB3(1) | With | With | Protective tube | Normal |
| BPZ:QRB3S | QRB3S | Without | Without | Protective tube | High |
| BPZ:QRB3S(1) | QRB3S(1) | With | With | Protective tube | High |

Accessories QRB3...

| | Item | Part number ¹⁾ |
|---|--------|---------------------------|
|  | Flange | 4 286 1490 0 |
|  | Clamp | 4 186 8806 0 |

¹⁾ To be specified when ordering individual items

Ordering

- When ordering, please give type reference according to «Type summary».
- QRB1... with plug is always to be ordered without flange and clamp, and vice versa.

Example

- QRB1A-A050B70A**
- Sensitivity: Normal
 - Casing length: 50 mm
 - Visible cable length: 50 cm
 - Stripped length: 70 mm
 - End of cable: With ferrule
 - Without plug
 - Accessories: Without flange and clamp

- QRB1A-A050B70A1** As above, but with:
- Accessories: Small flange and clamp included

Technical data

| | | |
|-----------------------|-------------------------------|--|
| General detector data | Degree of protection | IP40 |
| | Safety class | II |
| | Mounting position | Optional |
| | Detector cable | |
| | - QRB1 | Cable included in scope of delivery! Stranded copper wire 2 x 0.75 mm ² Jacket 5.2 mm dia., PVC Cable length according to «Type summary» |
| | - QRB3 | Cable to be supplied by thirds. Recommended: H05VV-F 2 x 0.75 Application standards should be observed. |
| | Weight | |
| | - QRB1... (depending on type) | Approx. 20...35 g |
| | - QRB3... (without cable) | Approx. 35 g |
| | Environmental conditions | Storage |
| Climatic conditions | | Class 1K3 |
| Mechanical conditions | | Class 1M2 |
| Temperature range | | -20...+60 °C |
| Humidity | | <95 % r.h. |
| Transport | | DIN EN 60721-3-2 |
| Climatic conditions | | Class 2K2 |
| Mechanical conditions | | Class 2M2 |
| Temperature range | | -20...+60 °C |
| Humidity | | <95 % r.h. |
| Operation | | DIN EN 60721-3-3 |
| Climatic conditions | | Class 3K5 |
| Mechanical conditions | | Class 3M2 |
| Temperature range | | -20...+60 °C |
| Humidity | | <95 % r.h. |
| Installation altitude | Max. 2,000 m above sea level | |



Caution!

**Condensation, formation of ice and ingress of water are not permitted!
If not observed, the safety functions are no longer ensured and there will be a risk of electric shock!**

Function

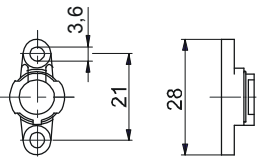
Supervision of light radiation of oil flames in the visible range of the light spectrum. The light-sensitive element is a photo resistor whose electrical dark resistance lies in the MΩ range. As the intensity of light increases, the electrical resistance drops to the kΩ range and is evaluated by the burner control for generating the flame signal. In contrast to RAR... photocell detectors, glowing firebrick in the combustion chamber can be detected.

Dimensions

Dimensions in mm

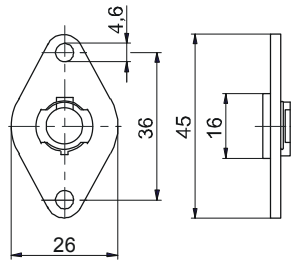
QRB1...

Small flange
4 241 1462 0

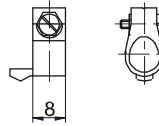


7714m04/1107

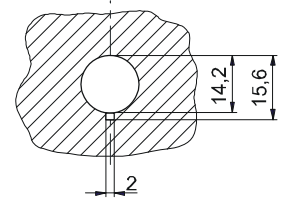
Large flange
4 241 1600 0



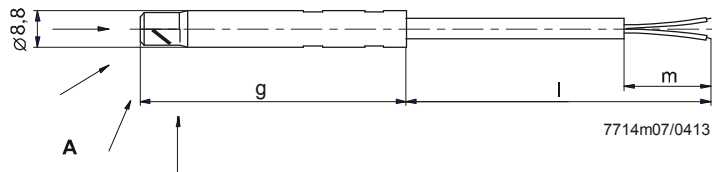
Clamp
4 186 1096 0



Mounting hole at burner chassis

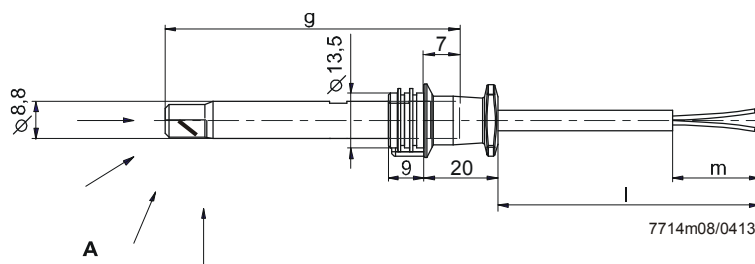


QRB1...A without plug



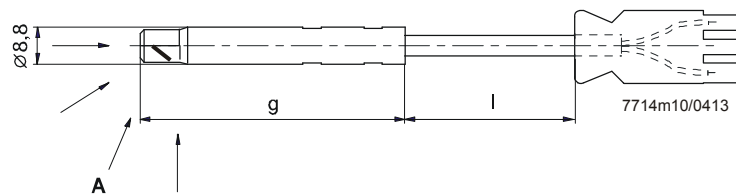
7714m07/0413

QRB1...B with plug



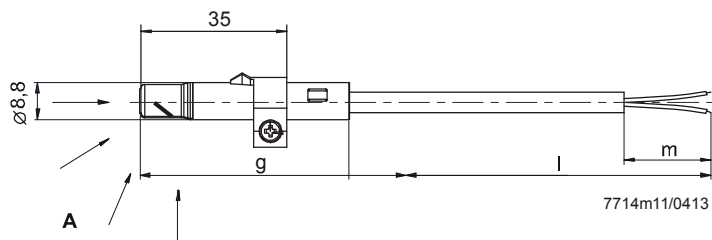
7714m08/0413

QRB1... with connector AGK53.0



7714m10/0413

QRB1x-xxxxxxxH with clamp



7714m11/0413

QRB3...

