

SICLIMAT™ X

PCC-TCP/IP**PCC
TCP/IP**

**SICLIMAT X uses PCC-TCP/IP to provide a cost-effective connection of SIMATIC S7 to X OS via industrial Ethernet.
It is also the basis to connect E/P-Link.**

Use

SICLIMAT X communication is based on PCCs (process communication channel). These are software drivers used to establish connection to the automation level by means of suitable hardware blocks (e.g. Ethernet card). In the future, all existing PCCs used to connect the SIMATIC S7 can be replaced by the PCC-TCP/IP. (Caution: The CP of the SIMATIC S7 must understand TCP/IP as native protocol). A practical application is to connect to the SICLIMAT X OS to do the following:

- Connect the SIMATIC S7 via SBH1P (6FL 4301-4BA14) directly to an industrial Ethernet.
- Connect the SIMATIC S7 via E/P-Link to the PROFIBUS.

This applies to the SIMATIC S7-300 and SIMATIC S7-400.

Features

The software requirements for PCC-TCP/IP are a part of the SICLIMAT X-system software (from SP 89 or V3.2). It requires an activation key and is necessary once per X OS to be connected to the SIMATIC S7.

Caution: PCC-TCP/IP is a part of the E/P-Link delivery package.

Ordering

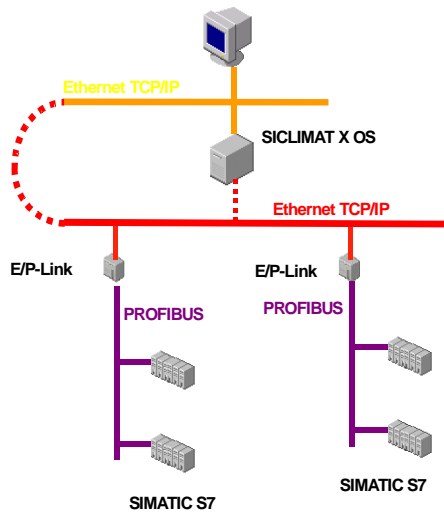
When ordering, please specify the quantity, product name, and type code.

Type	Order no.	Service specification no.
PCC-TCP/IP	6FL4214-4NC91	12/27237

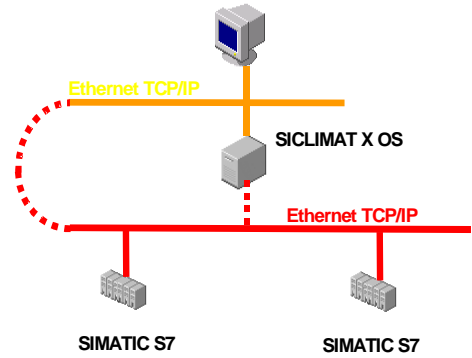
Examples for configuration

The terminal bus and the process bus can be connected. In this case, only one Ethernet card is necessary in the X OS. If the terminal bus and the process bus are separated logically or physically, two Ethernet cards must be inserted in the X OS.

SIMATIC S7 on PROFIBUS



SIMATIC S7 on industrial Ethernet



SIMATIC S7 on PROFIBUS and industrial Ethernet

