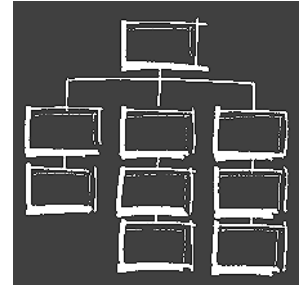


VISONIK®

## BPS function sheets

Overview



---

**The BPS function sheets describe application functions provided by the VISONIK Building Process Station BPS to the building automation system. This document describes target audience and purpose of the function sheets and offers an overview of the existing topics.**

---

### Introduction

#### Target audience

The function sheets primarily target building automation experts working in the fields of HVAC and measuring and control technology and in particular:

- Sales staff
- Engineers
- Building operators
- New customers and company staff

#### Purpose

The function sheets are used for the following purposes:

- Establishing a tender
- Project documentation
- Self-study

#### Topics and contents

Both topics and contents are structured to suit the above purposes and match the terminology and functions of building automation as described in VDI 3814, sheets 1 and 2. Special emphasis was placed on the information list as a description of type and scope of data exchange with an automation station.

The VISONIK BPS functions are described as seen by the user. If meaningful and if general knowledge, references are made to proprietary know-how.

Refer to the next page for a list of the available function sheets.

#### *Detailed documents*

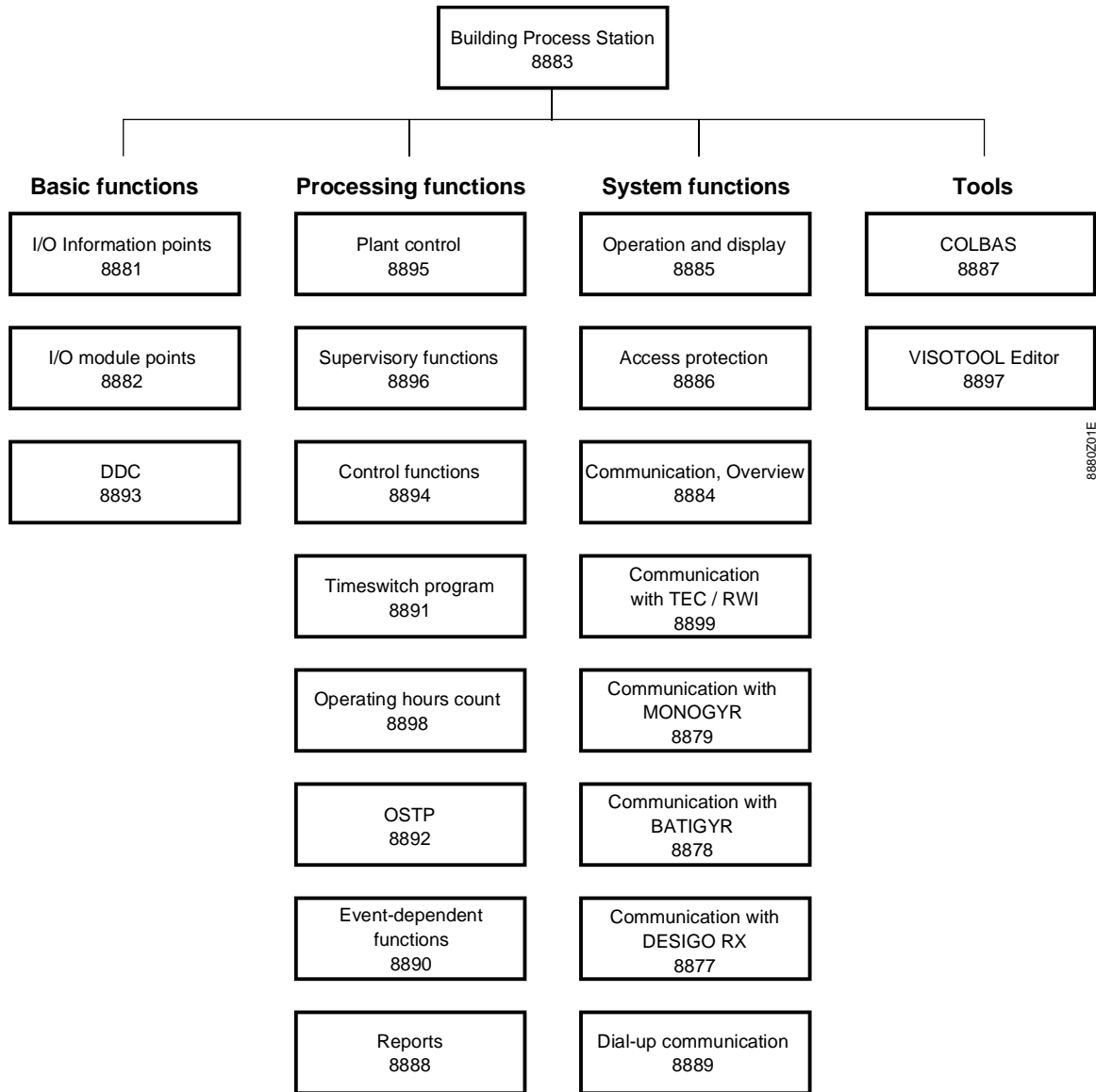
More detailed information than provided in the function sheets is available in:

- Data sheets
- VISONIK System Basics
- VISONIK Point Types and Parameters

Further sources are mentioned in the respective function sheets.

## Overview

The following overview provides a list of the VISONIK BPS function sheets along with title and document number:



Explanations on the overview

As opposed to VDI 3814, sheets 1 and 2, the system functions form a group separate from the processing functions. Additionally, the "Tools" group is also a separate group. The following table lists the main topics of the individual groups:

Sheet/Group	Main Topic
Building Process Station	This function sheet provides a brief overview of all VISONIK BPS functions.
Basic functions	Function sheets in this group describe process-related functions: Signalling, measuring, counting, switching, positioning, and the DDC function.
Processing functions	These function sheets describe the functions based on the fundamental functions: Supervision, control and regulation of building technical installations.
System functions	The system functions describe the "general services" of the VISONIK BPS operating system for the user and within the overall system.
Tools	These function sheets describe the tools used for programming and communicating with the VISONIK BPS.