

Readout Software

ACS10

for M-bus central unit OZW10

Software program for operation in a WINDOWS environment for remote data read-out and remote operation of SONOGRYR M-bus central units.

Use

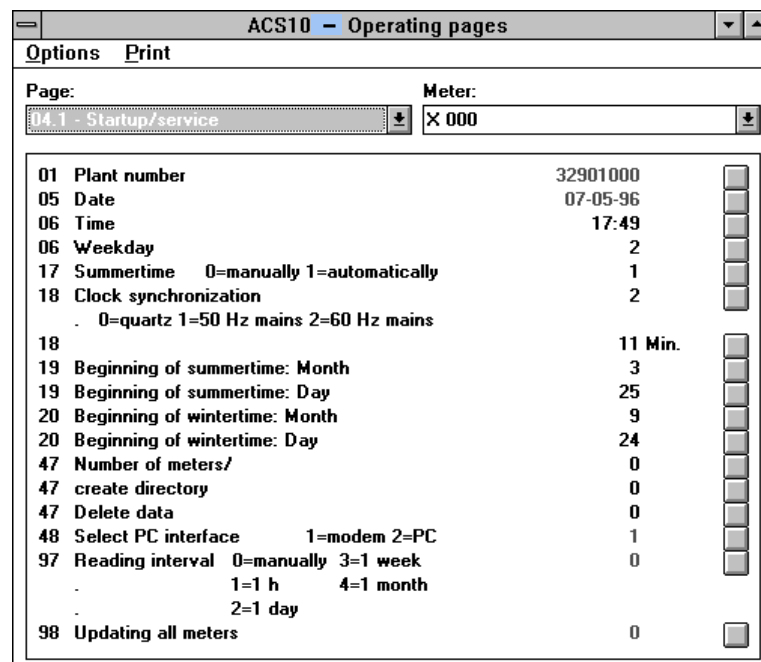
The ACS10 readout software has been designed for use in SONOGRYR plants with OZW10 M-bus central.

For the field of use of M-bus systems, refer to data sheet N5361.

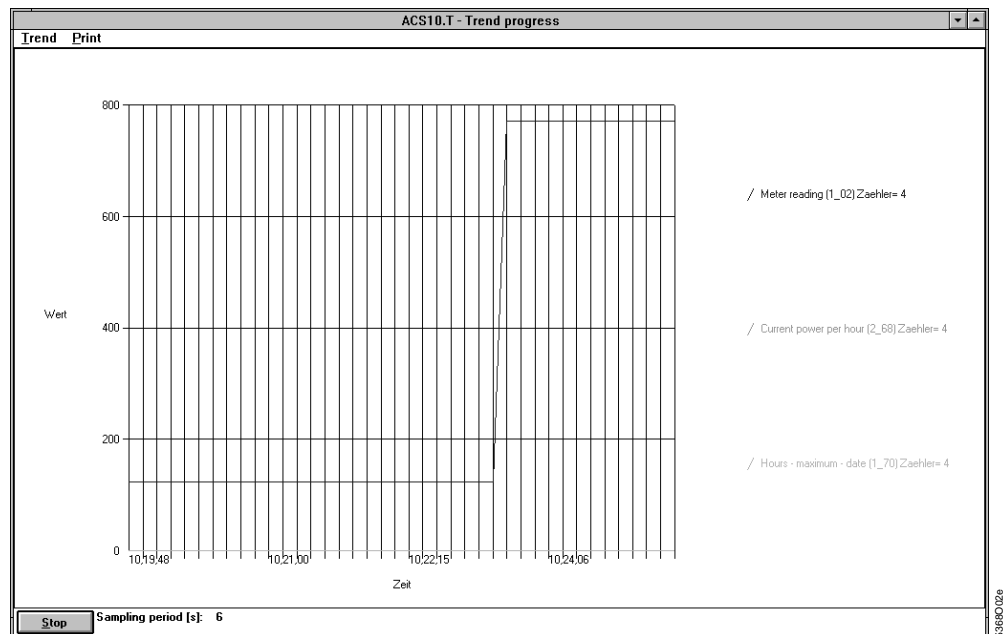
Functions

- Readout and visualization of data from the heat meters and the plant
- Reading data from the ALC30.128 memory card
- Reading predefined data sets and data sets configured by the user himself, in tabular form
- Presenting selected variables over a defined period of time
- Reading fault status signals from the plant
- Remote operation of the M-bus central unit

Examples:



Remote operation of M-bus central unit. Presentation of the operating pages in ACS10 corresponds to that on the M-bus central unit



Presentation of trend of freely selected variables (recording and visualization of trend progress)

Ordering

When ordering, please give type reference ACS10, of which the latest version is always supplied.

Delivery is made as a package consisting of

- manual with box
- 3¹/₂ in. diskettes (1.44 MB)
- mouse mat

Equipment combinations

PC

To be able to communicate with the M-bus central unit, a PC with the following specification is required:

- Type of processor: 80386 min., but 80486 recommended
- RAM: 4 MB min., but 8 MB recommended
- Hard disk: 8 MB min. (depending on the number of plants and the amount of data read from the plant)
- Screen: VGA standard driver (VGA 3.0), 640 x 480, 16 colours and higher resolution
- Interfaces: serial COM1...COM4, up to 19200 baud
- Operating system:
 - DOS, version 5.0 or higher and WINDOWS, version 3.1 or higher, or
 - OS/2, version 2.1
- Diskette drive: 3¹/₂ in., 1.44 MB

Software

For the graphic presentation of values, processes, trends, etc., a user program is required (e.g. MS-EXCEL), which is suitable for ASCII files

- that consist of several lines and columns
- whose columns are separated by tabs

Modem

If the telephone network is used for communication, modems are required. At present, the following types of modems are supported:

- Alcatel md1142
- Microlink 2440TL
- Microlink 2460TL
- Microlink 28.8TQV
- Microlink 28.8TQ
- Microlink 14.4TQ
- QuickTel XEBA 14.400

- Worldport 2400
- Worldport 2400 V.42bis
- Zyxel U-1496
- Zyxel U-1496E

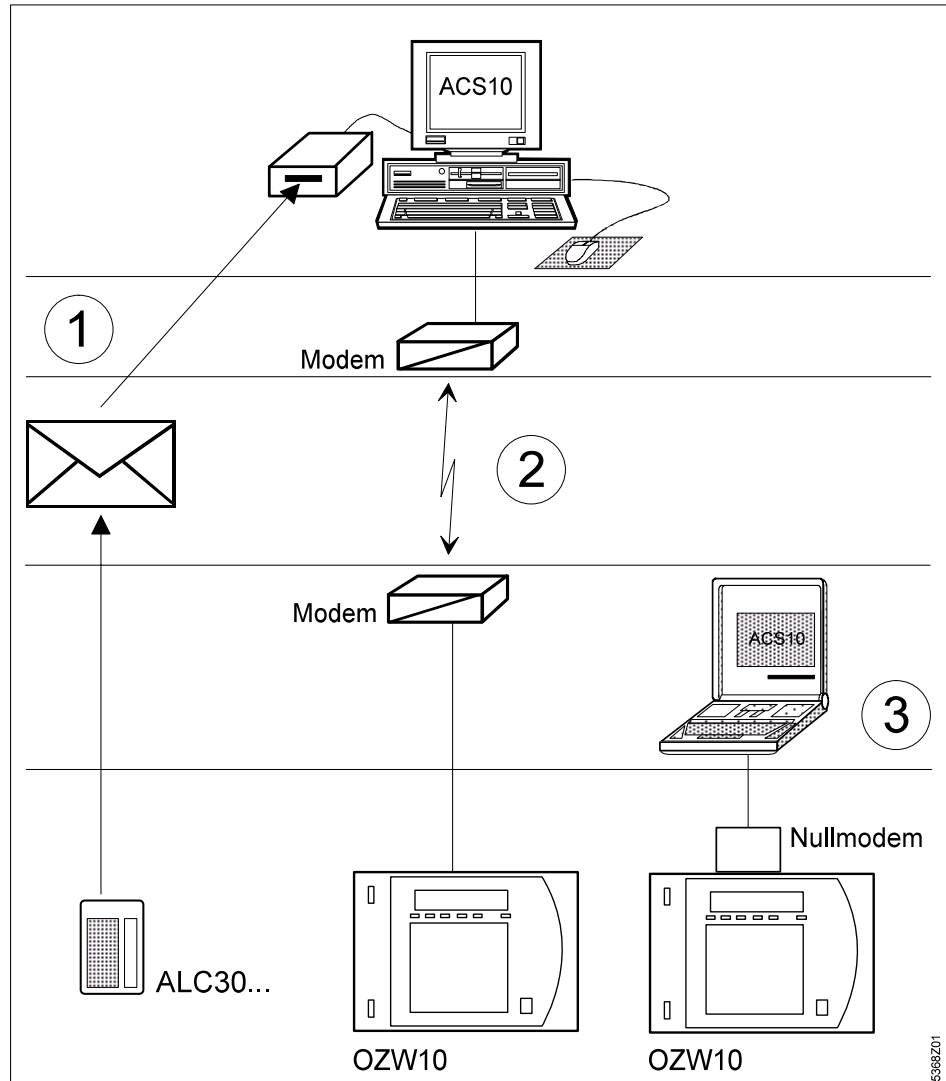
Technical design

The ACS10 readout software can communicate with the M-bus central unit, either directly or via modem. For this purpose, the M-bus central unit is equipped an appropriate interface.

Communication choices between M-bus central unit and PC:

- Via modem over the public telephone network
- Directly, e.g. by means of a service laptop

The meter readings are always stored in the same data format, no matter if the data are read from the memory card or via the interface.



Communication choices

- 1 The data are written on the ALC30.128 memory card, which is sent to the billing company
- 2 From the OZW10 central unit, the data are read to the PC via modem
- 3 From the OZW10 central unit, the data are read to the directly connected laptop

Commissioning notes

ACS10 can be installed with the help of the install program supplied with the software package.

The installation procedure, the respective modem specifications and the hardware connections (cables, interfaces, etc.) are described in detail in manual U5368.

Operating notes

ACS10 features the usual text-sensitive WINDOWS help functions, which give descriptions of commands and menus. For this reason, the manual does not contain any descriptions of the commands and menus.

Typical applications:

- Plant supervision and readout of consumption data via modem and telephone (variant 2 under "Communication choices").
- Recording of data via a direct connection (variant 3 under "Communication choices")