

Billing

Device number

01	Customer number
02	Cumulated energy Meter 1
03	Cumulated volume Meter 2
04	Operating hours
07	Energy last set day
08	Volume last set day
10	Date last set day
11	Energy last but one set day
12	Volume last but one set day
14	Date last but one set day

SW-Version 4.0 B5362en 17.11.2003 H 4 319 2471 0 g

Billing

Device number

15	Date previous month
21	Meter reading previous month
22	Meter reading 2 months ago
23	Meter reading 3 months ago
24	Meter reading 4 months ago
25	Meter reading 5 months ago
26	Meter reading 6 months ago
27	Meter reading 7 months ago
28	Meter reading 8 months ago
29	Meter reading 9 months ago
30	Meter reading 10 months ago
31	Meter reading 11 months ago
32	Meter reading 12 months ago
	Value previous year

SW-Version 4.0 B5362en 17.11.2003 H 4 319 2471 0 g

Billing

Device number

33	Reading date
34	Reading time
50	Fault
51	Duration of fault
69	Maximum
70	Date of maximum
87	Medium
93	Tariff 1
94	Tariff 2
98	Updating M-bus device

SW-Version 4.0 B5362en 17.11.2003 H 4 319 2471 0 g

Diagnosis

Device number

01	Customer number
33	Reading date
34	Reading time
50	Fault
51	Duration of fault
52	Software version
54	Production number
67	Power
68	Mean value
73	Flow temperature
74	Return temperature
75	Flow rate
82	Manufacturer's code
92	M-bus address
98	Updating M-bus device

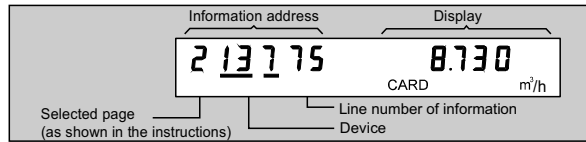
SW-Version 4.0 B5362en 17.11.2003 H 4 319 2471 0 g

QUICK-INFO

Calling up information

1. Press one of the buttons on the left
2. Press or to select the page shown, e.g. card page 2 = Diagnosis
3. Press to select the page, device or line number
4. Press or to readjust the value. Non-available values appear as --

For example:



Setting the values

1. Press the buttons on the right to change adjustable values. The cards show non-adjustable values highlighted
2. Press and simultaneously for 4 seconds to make a reset to the default values. The display will change to --, then to the default value.

Changeover of display

1. Press the buttons on the right to switch over the display.
2. Press and simultaneously to switch to the second line.
3. Press to switch to other lines.

Storing on the memory card

1. Insert memory card and press . During the storage process, the display reads DATA

Acknowledging alarms

1. Press any button (with the exception of)

SW-Version 4.0 B5362en 17.11.2003 H 4 319 2471 0 g

SIEMENS

OZW10

Error code list

Error code	Cause of error
00	No error
01	Tv < Tr or T outside value range
02	Undervoltage
03	Hardware error
04	Error flow acquisition, sensor error
05	Air in measuring path
06	Flow sensor short-circuit / open-circuit
07	Error operating conditions
08	Return sensor short-circuit / open-circuit
09	Device-specific error
10	Communication error subsystem
12	Data overflow in RAM
13	Data overflow in EEPROM
22	Battery memory card exhausted
23	Battery M-bus central unit exhausted
34	Communication breakdown M-bus
35	Error memory card
36	Format error memory card
37	Memory card write-protected
38	Memory card full
40	Severe error
41	Severe error, Tv < Tr or T outside value range

SW-Version 4.0 B5362en 17.11.2003 H 4 319 2471 0 g

Error code	Cause of error
42	Severe error, undervoltage
43	Severe error, hardware error
45	Severe error, air in measuring path
46	Severe error, flow sensor short-circuit / open-circuit
47	Severe error, sensor error, electronics error
48	Severe error, return sensor short-circuit / open-circuit
49	Severe error, device-specific error
50	Severe error, communication breakdown subsystem
61	Fatal plant error
62	External alarm
63	Plant error
64	Communication breakdown
65	Communication error
66	Constant control deviation
67	Fault subsystem
71	Alarm input 1
72	Alarm input 2
73	Alarm input 3
74	Alarm input 4
92	Number of devices set is wrong
93	Number of readings exceeded
97	Device directory full
98	Data storage overflow

SW-Version 4.0 B5362en 17.11.2003 H 4 319 2471 0 g

Diagnosis - M-bus central unit

01	Plant number
04	Operating hours
05	Date
06	Weekday / time of day
18	Clock synchronization <small>0 = quartz 1 = mains</small>
43	Storage capacity memory card <small>Size Available</small> e.g. 0 128 -- 0085 KB
47	Number of M-bus devices
<input type="checkbox"/> <input type="checkbox"/> <input type="checkbox"/>	Search run <small>Baud rate M-bus address . Number Customer number</small>
48	Function of PC port <small>0 = no device 1 = modem 2 = PC local no alarms 3 = PC local with alarms</small>
50	Fault
52	Software version
54	Production number
96	Alarm interval <small>0 = reading interval 1...254 = minutes</small>
97	Reading interval <small>0 = manually 3 = 1 week 1 = 1 hour 4 = 1 month 2 = 1 day</small>

SW-Version 4.0 B5362en 17.11.2003 H 4 319 2471 0 g

Startup / service

01	Plant number
05	Date
06	Weekday / time of day
17	Summertime <small>0 = manually 1 = automatically</small>
18	Clock synchronization <small>0 = quartz 1 = 50 Hz mains 2 = 60 Hz mains</small>
19	Beginning summertime <small>Day - month</small>
20	Beginning wintertime <small>Day - month</small>
47	Number of M-bus devices / scan
<input type="checkbox"/> <input type="checkbox"/> <input type="checkbox"/>	Delete data
48	Select PC port <small>1 = modem 2 = PC local no alarms 3 = PC local with alarms</small>
95	M-bus parameters <small>Baud rates Addressing</small>
96	Alarm interval <small>0 = reading interval 1...254 = minutes</small>
97	Reading interval <small>0 = manually 3 = 1 week 1 = 1 hour 4 = 1 month 2 = 1 day</small>
98	<input type="checkbox"/> <input type="checkbox"/> <input type="checkbox"/> Updating all M-bus devices

SW-Version 4.0 B5362en 17.11.2003 H 4 319 2471 0 g