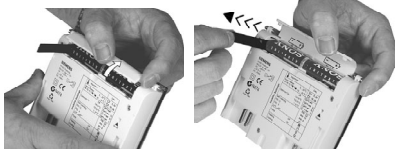


Commissioning and quick start



1. Remove controller from its base and open cover of the battery compartment.
2. Remove the black battery transit tab. The controller will switch itself on.
3. Close the battery compartment and replace the controller within 30 seconds onto its base (also refer to section Reset).

Selecting the operating mode



The operating mode selector enables you to select 5 different operating modes:

- Automatic operation with a maximum of 3 heating periods
- Continuously comfort mode
- Continuously economy mode
- Continuously frost protection mode
- 24-hour mode with 1 heating period

Changing temporarily the current setpoint temperature



The change is maintained until the next switching point is reached!

1. When pressing the or button for the first time, the currently valid setpoint temperature will be displayed. It can be readjusted in increments of 0.2 °C (max. +/-4 °C).
2. After 3 seconds, the initial display will automatically appear again.

Changing temporarily the temperature setpoint (savings tip)

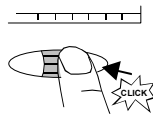


In operating modes **Auto** and , this button can be pressed to make a manual change from comfort to economy mode, or vice versa. The change will automatically be cancelled when reaching the next switching point or when selecting another operating mode.

Symbols		Absence		24-hour mode		2 heating periods		
	1...7	"Time" menu		Heating valve opens		Comfort setpoint		3 heating periods
T	"Temperature" menu		Heating valve closes		Economy setpoint	1 2 3 4 5 6 7	Current weekday	
	"Heating periods" menu	Auto	Automatic operation		Setpoint frost protection	1 2 3 4 5 6 7	Working day group	
	"Absence" menu		Continuously comfort mode		Setpoint remote operation	1 2 3 4 5 6 7	Weekend group	
	Battery change		Continuously economy mode		Absence setpoint	1 2 3 4 5 6 7	Entire week	
	Remote operation		Frost protection		1 heating period		Time schedule	

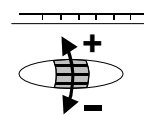
Functions of the roller selector

Press:



- You access the menu level
- You activate the menu
- You save the inputs
- You switch to the next menu item
- You accept the menu item

Roll:



- You go from one menu to the next
- You change the setting variables (temperature in increments of 0.2 °C, time in increments of hours and minutes)
- You select predefined functions

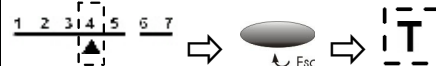
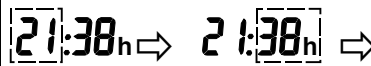
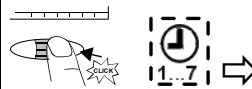
Escape button

Press the Esc button to return to the menu level previously activated or to leave the menu level in a number of steps until you reach the initial display (the settings currently displayed will be accepted).



Setting the time of day and the weekday

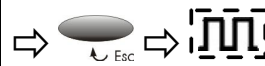
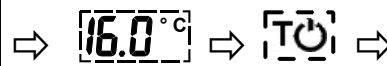
- Adjustable in operating modes **Auto**, , and



1. Press: You access the menu level; the **clock** flashes.
2. Press: You accept the menu; the **hours** flash.
3. Roll: Set the current **hour**.
4. Press: You save the input; the **minutes** flash.
5. Roll: Set the current **minute**.
6. Press: You save the input; the **weekday** flashes.
7. Roll: Select the current **weekday**.
8. Press the Esc button to return to the menu level: the **T** menu flashes.
(Change not necessarily required; press the Esc button again to return to the initial display.)

Changing temperatures long-term

- Adjustable in operating modes **Auto**, , and

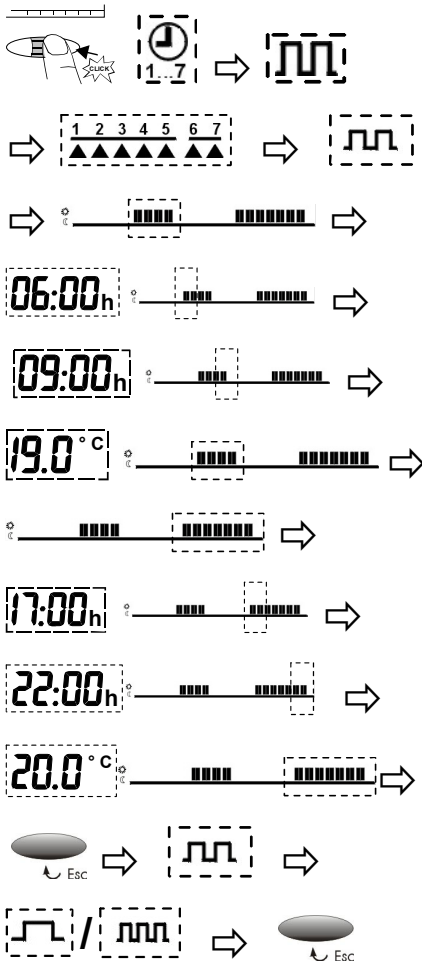


If no button is pressed for 10 seconds, the setting displayed will be accepted and the initial display will appear again.

1. Press: You access the menu level; the **clock** flashes.
2. Roll: Toward the display to the **T** menu.
3. Press: You accept the menu; symbol **T** flashes.
4. Press: You accept ; the **setpoint** flashes.
5. Roll: Set the **comfort temperature**
6. Press: You save the input; symbol **T** flashes.
7. Press: You accept ; the **setpoint** flashes.
8. Roll: Set the **economy temperature**.
9. Press: You save the input; symbol flashes.
10. Press: You accept ; the **setpoint** flashes.
11. Roll: Set the **frost protection temperature**.
12. Press: You save the input; symbol **T** flashes.
13. Press: You accept ; the **setpoint** flashes.
14. Roll: Set the **temperature setpoint** while remote operation is active.
15. Press the Esc button to return to the menu level: The heating periods menu flashes
(Change not necessarily required; press the Esc button again to return to the initial display.)

Settings for automatic operation with 2 heating periods

- Adjustable in operating modes **Auto** and



If no button is pressed for 10 seconds, the setting displayed will be accepted and the initial display restored.

- Press: You access the menu level; the **clock** flashes.
- Roll: Twice toward the display; menu flashes.
- Press: You accept the menu; the **day selection** symbol flashes.
- Roll: Select the days, the working days, the weekend or the week.
- Press: You save the selection made; **heating period** flashes.
- Press: Accept ; **heating period 1** flashes.
- Press: You accept **heating period 1**; **start time** of heating period 1 flashes.
- Roll: Set the **start time** of heating period 1.
- Press: You save the input; **end time** of heating period 1 flashes.
- Roll: Set the **end time** of heating period 1.
- Press: You save the input; **setpoint** of heating period 1 flashes.
- Roll: Set the **setpoint** of heating period 1.
- Press: You save the input; **heating period 2** flashes.
- Press: You accept **heating period 2**; **start time** of heating period 2 flashes.
- Roll: Set the **start time** of heating period 2.
- Press: You save the input; **end time** of heating period 2 flashes.
- Roll: Set the **end time** of heating period 2.
- Press: You save the input; **setpoint** of heating period 2 flashes.
- Roll: Set the **setpoint** of heating period 2.
- Press the Esc button to return to the **heating periods** menu: Menu item **heating periods** flashes.
- Roll: Toward the display or away from it to menu items heating period or heating periods (Change not necessarily required; press the Esc button several times to leave the menu level in several steps, thus returning to the initial display.)

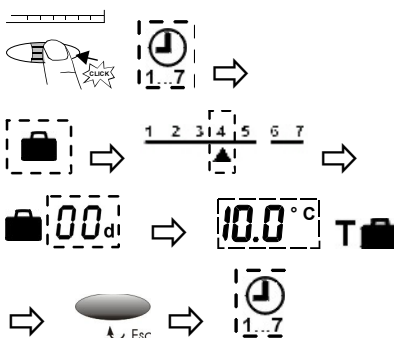
Settings for automatic operation with 1 or 3 heating periods

- Adjustable in operating modes **Auto** and

The procedure to be followed is the same as that for automatic operation with 2 heating periods the only difference being that, in addition, a setpoint for heating period 3 can be entered (standard setting 21 °C).

Absence / holidays

- Adjustable in operating modes **Auto** and



If no button is pressed for 10 seconds, the setting displayed will be accepted and the initial display will appear again.

- Press: You access the menu level; the **clock** flashes.
 - Roll: Away from the display, menu flashes.
 - Press: Accept ; symbol flashes.
 - Roll: Set the start (weekday) of your absence.
 - Press: You save the input; **the number of days** flash.
 - Roll: Set the duration of your absence; **number of days** (max. 99).
 - Press: You save the input; setpoint **T** flashes.
 - Roll: Set the temperature
 - Press the Esc button to return to the menu level: the clock flashes.
- (change not necessarily required; press the Esc button again to return to the initial display.)

24-hour operation

Adjustable in operating mode . 24-hour mode with one heating period only. Start of heating period, end of heating period and temperature setpoint can be set individually by roller selector.

Retrieving the default values

Press the button behind the small opening for at least one second, thus resetting the user-specific settings to their default values (the heating engineer settings will remain unchanged). After the reset the controller starts to an initialization phase of 180 seconds. During this phase, the actuator is driven to its fully closed position. The clock starts at 12:00.

When making a reset, all display fields will light up.

Important: The actuator reaches the fully closed position within a maximum of 150 seconds.
After a reset the controller must be slid back onto its base within 30 seconds.

Default values

Factory settings for heating

Operating mode			
Start of continuous operation	00:00	00:00	00:00
End of continuous operations	24:00	24:00	24:00
Setpoint of comfort mode	19 °C		
Setpoint of economy mode		16 °C	
Setpoint frost protection			5 °C
Setpoint T remote operation		10 °C	
Setpoint T absence		12 °C	
Operating mode	Auto		
Selected periods			
Start of period 1	07:00	06:00	06:00
End of period 1	23:00	08:00	08:00
Start of period 2		17:00	11:00
End of period 2		22:00	13:00
Start of period 3			17:00
End of period 3			22:00
Setpoint of period 1	19 °C	19 °C	19 °C
Setpoint of period 2		20 °C	20 °C
Setpoint of period 3			21 °C
Setpoints T and T	See above		

Changing the batteries 2 Alkaline batteries type AA 1.5 V

When this symbol appears, the batteries must be replaced within 3 months.

- Remove controller from its base.
- Open battery compartment at the rear and replace the batteries.
- Close battery compartment and replace the controller.

Caution:

When changing the batteries, the current data are maintained for a maximum of one minute.