

Landis & Gyr (Europe) Corp.

UNIGYR® VISONIK

VISOWIN

Operating Manual



Version: 1.0

CM2B8526E
April 1996

LANDIS & GYR

Landis & Gyr (Europe) Corp.

UNIGYR® VISONIK

VISOWIN

Operating Manual

Version: 1.0

Author: Tony Fux 5646

CM2B8526E
April 1996

LANDIS & GYR

Table of Contents

1. Getting started	1
1.1. Start VISOWIN	1
2. Operation with a substation	3
2.1. General.....	3
2.2. Select a substation.....	3
2.3. Popcard operation	4
2.4. Time Programmes	5
2.5. Week Programme	6
2.6. Date Programme	9
2.7. Holiday(s)	10
2.8. Reports.....	11
2.9. Help	12
3. End the VISOWIN session	13
4. Change the printer settings.....	15
5. Service.....	17
5.1. Communication Set-up.....	17
5.2. Communication test.....	17
5.3. Show Data (Demo).....	17
5.4. Start Terminal Emulator.....	18
6. About VISOWIN.....	19

1. Getting started

1.1. Start VISOWIN

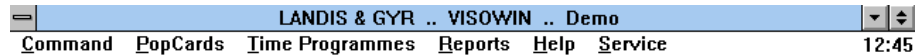
VISOWIN is attached to the following WINDOWS icon :



Start this application by using the mouse or the keyboard. VISOWIN will start and show the main menu. The options are related to the selected substation.



In this case, VISOWIN runs in the "Demo" mode and the main menu appears as :



2. Operation with a substation

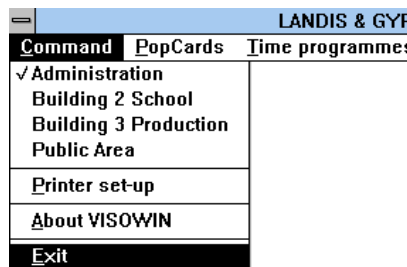
2.1. General

As VISOWIN runs in WINDOWS, all the operations are similar to other WINDOWS software. For further details regarding WINDOWS operations, refer to the WINDOWS operating manuals.

2.2. Select a substation

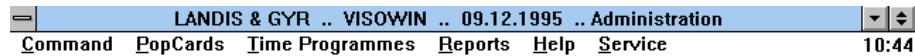
After VISOWIN has been started, a connection to the predefined substation is established. If the substation is a remote substation, connected via a modem, the connection has to be made manually.

To make a connection to a substation, select the substation name, from the menu "Command" :



The selected substation is marked with : ✓

If the substation responds, all the menu functions will become active (grey text becomes black) and the selected substation name is displayed in the Main Menu, for example :

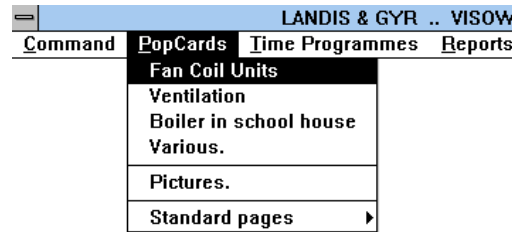


All the following functions are offered to operate with the selected substation.

2.3. Popcard operation

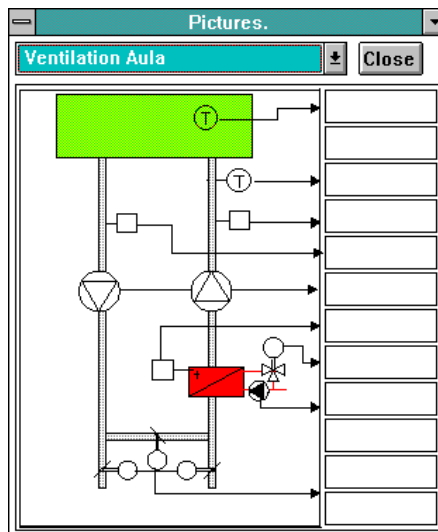
The Popcard operation is divided into three different sections. The first section contains a maximum of four books of Popcards. The selection "Pictures" contain the graphical Popcards. There is an additional section, if "Standard Popcards" are used.

Example of the Popcard Menu :



Every book has a couple of pages. By selecting a page, the assigned values will be displayed on the Popcard. The values are updated frequently. Changes to settings are sent immediately to the substation. If an entry is not enabled, a beep sound will be sounded.

Example of a Popcard :



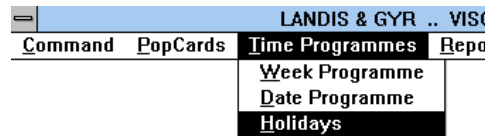
Up to four Popcards can be opened at the same time.

Note, that every open Popcard Window reduces the update time, as all the items on the Popcard are in sequence for the update process.

2.4. Time Programmes

The Time Programmes are divided into the operations of Week, Date and Holiday Programmes. While the Time Programme Window is open, the Popcards will not be updated during this time.

Example of the Time Programme Menu :



For questions regarding the concept of Time Programmes, refer to the substation documentation.

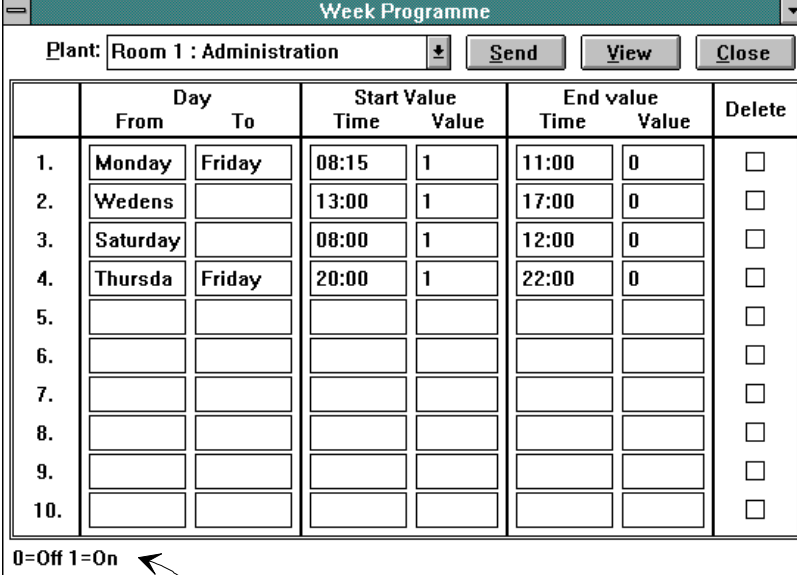
2.5. Week Programme

The Week Programme Window depends on the substation type.

Either a) EKL or PRV1

or b) PRV2

For an EKL or PRV1, the Week Programme Window will appear as follows :



The screenshot shows a window titled "Week Programme" with a dropdown menu for "Plant" set to "Room 1 : Administration". Below the dropdown are buttons for "Send", "View", and "Close". The main area contains a table with the following structure:

	Day		Start Value		End value		Delete
	From	To	Time	Value	Time	Value	
1.	Monday	Friday	08:15	1	11:00	0	<input type="checkbox"/>
2.	Wedens		13:00	1	17:00	0	<input type="checkbox"/>
3.	Saturday		08:00	1	12:00	0	<input type="checkbox"/>
4.	Thursda	Friday	20:00	1	22:00	0	<input type="checkbox"/>
5.							<input type="checkbox"/>
6.							<input type="checkbox"/>
7.							<input type="checkbox"/>
8.							<input type="checkbox"/>
9.							<input type="checkbox"/>
10.							<input type="checkbox"/>

Below the table, there is a legend: "0=Off 1=On". An arrow points from a "Help Text" box to this legend.

For an PRV2, the Week Programme Window will appear as follows :

Week Programme

Plant: Heating school room [Send] [View] [Close]

	Day		Time		Value	Delete	Programme
	From	To	Start	End			
1.	Monday	Friday	08:15	11:00	1	<input type="checkbox"/>	Active: <input type="checkbox"/>
2.	Wedens		13:00	17:00	1	<input type="checkbox"/>	Stop Value: <input type="text"/>
3.	Saturday		08:00	12:00	1	<input type="checkbox"/>	
4.	Thursda	Friday	20:00	22:00	1	<input type="checkbox"/>	Extension Today: <input type="text"/> Active: <input type="checkbox"/>
5.						<input type="checkbox"/>	
6.						<input type="checkbox"/>	
7.						<input type="checkbox"/>	
8.						<input type="checkbox"/>	
9.						<input type="checkbox"/>	
10.						<input type="checkbox"/>	

0=Off 1=ON

After opening the Week Programme and selecting the Plant Window, the entries for this Plant are shown in the assigned fields. The button "View" offers an overview of the entries, for example :

Week Programme Overview

[Print] [Close]

	0	1	2	3	4	5	6	7	8	9	10	11	12	13	14	15	16	17	18	19	20	21	22	23
Monday									■	■	■	■	■											
Tuesday									■	■	■	■	■											
Wednesday									■	■	■	■	■	■	■	■	■							
Thursday									■	■	■	■	■								■	■		
Friday									■	■	■	■	■									■	■	
Saturday									■	■	■	■	■	■	■	■	■							
Sunday																								
Special Day																								

The "PRINT" button will send the week programme overview to the local printer.

To generate new entries or to alter the existing times in the Week Programme use the first two letters of the weekday, this short entry will automatically revert to the full weekday name.

In order to delete an entry, mark the entry in the "Delete" field. After completion of all the modifications, save the new entries in the substation with the "Send" button.

A new loading of modified entries may result in empty lines in the Week Programme display sequence. This is a result of previously deleted entries. For new entries always use any empty lines first.

2.6. Date Programme

The Date Programme Window is also dependant on the substation type. The Date Programme Window for a PRV2 appear as follows :

Date Programme							
Plant: Heating school room				Send		Close	
	Date		Time		Value	Passed	Delete
	Start	End	Start	End			
1.	01.12.1995	03.12.1995	06:00	08:00	1	Yes	<input type="checkbox"/>
2.	15.12.1995		05:30	08:00	1		<input type="checkbox"/>
3.							<input type="checkbox"/>
4.							<input type="checkbox"/>
5.							<input type="checkbox"/>
6.							<input type="checkbox"/>
7.							<input type="checkbox"/>
8.							<input type="checkbox"/>
9.							<input type="checkbox"/>
10.							<input type="checkbox"/>

0=Off 1=ON

The entries from the selected plant are loaded. Expired entries are shown in the field "Passed".

Generate new entries by entering dates and times in the relevant fields or alter the existing entries. To delete an entry, mark the entry in the "Delete" field. After all the modifications are complete, save the entries in the substation with the "Send" button.

A new loading of modified entries may result in empty lines in the Date Programme display sequence. This is a result of previously deleted entries. For new entries always use any empty lines first.

2.7. Holiday(s)

The Holiday Programme Window will appear as follows :

Holiday(s)							
Load from Disc		Write to Disc		Get		Send	
Close							
	Holiday	Passed	Delete	Period		Passed	Delete
				From	To		
1.	01.11.1995	Yes	<input type="checkbox"/>	16.10.1995	30.11.1995	Yes	<input type="checkbox"/>
2.	08.12.1995	Yes	<input type="checkbox"/>	23.12.1995	03.01.1996		<input type="checkbox"/>
3.	01.08.1996		<input type="checkbox"/>				<input type="checkbox"/>
4.			<input type="checkbox"/>				<input type="checkbox"/>
5.			<input type="checkbox"/>				<input type="checkbox"/>
6.			<input type="checkbox"/>				<input type="checkbox"/>
7.			<input type="checkbox"/>				<input type="checkbox"/>
8.			<input type="checkbox"/>				<input type="checkbox"/>
9.			<input type="checkbox"/>				<input type="checkbox"/>
10.			<input type="checkbox"/>				<input type="checkbox"/>

Add entries or alter the existing, as described previously. To delete an entry, mark the entry in the "Delete" field. After all the modifications are done, save the entries in the substation with the "Send" button. Entries which have expired are marked in the "Passed" column.

In addition, these entries can be saved to the PC harddisc and then be used to "Send" to the next substation in the system.

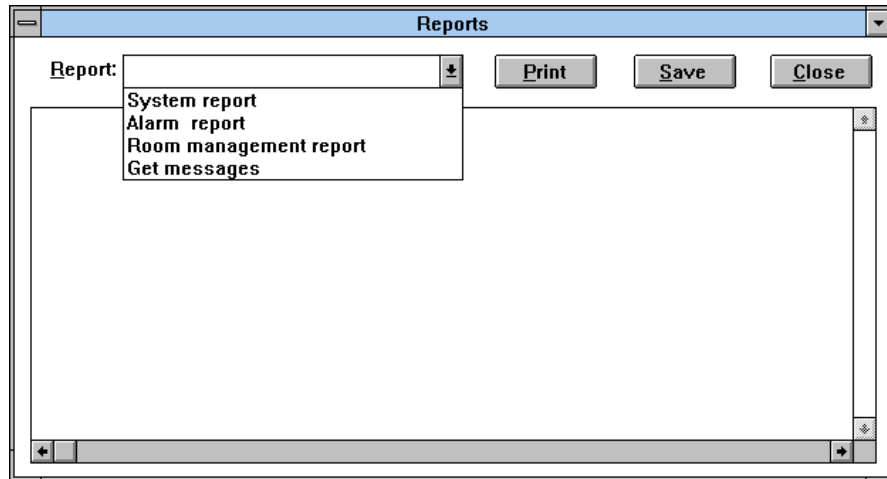
A new loading of modified entries may result in empty lines in the Date Programme display sequence. This is a result of previously deleted entries. For new entries always use any empty lines first.

2.8. Reports

Up to 25 different Reports are available in the selected substation. The number and choice of reports may differ from substation to substation, depending on the substation type. (I.e. EKL & PRV1 or PRV2)

While the Report Window is open, the Popcards will not be updated during this time.

Example of a Report Menu :



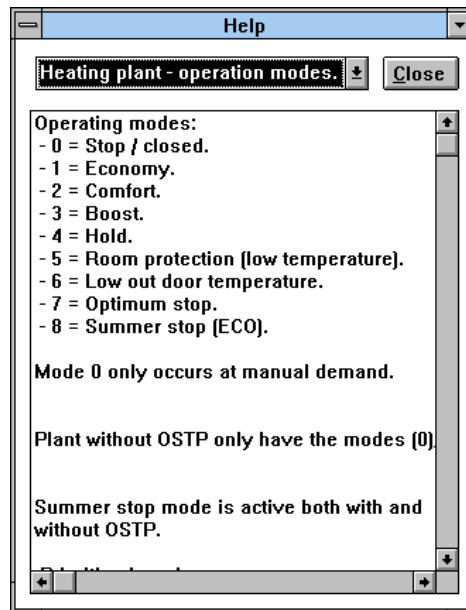
While the Report Window is open, the Popcards will not be updated during this time.

The selected Report will be displayed in the Window and can be saved as a text file or be sent to the local printer.

2.9. Help

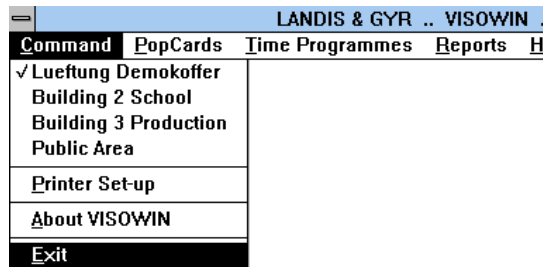
Different Help pages are defined as support for operation of the project.

Example of a selected Help page :



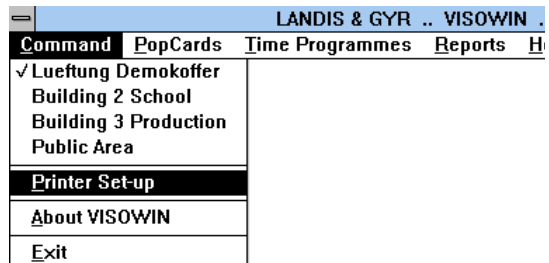
3. End the VISOWIN session

Select "Exit" of the "Command" menu to end the VISOWIN session. If there is a modem connection established to a remote substation, the remote substation will be automatically disconnected.



4. Change the printer settings

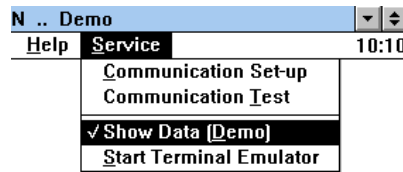
The settings for the local printer can be changed with "Printer Set-up" from the "Command" menu. Starting this menu point will open the regular WINDOWS Printer Set-up dialogue. For operation of this Window, refer to the WINDOW system manual.



5. Service

The menu "Service" offers a number of tools for commissioning and service purposes. For normal operation, these tools are not required.

Select "Show Data (Demo)" out of the "Service" menu.



Note:

Changes in one of this menus can affect the communication to the substation

5.1. Communication Set-up

Every time a substation is selected from the menu, the defined COM port parameters are used. These parameters can then be altered with "Communication Set-up". Selecting this menu point will open the regular WINDOWS COM port setting dialogue. For operation of this Window, refer to the WINDOWS system manual.

5.2. Communication test

During normal operation, the "Communication test" can be selected. A window opens in the lower part of the screen, which displays a trace of the communication between the selected substation and VISOWIN. To switch off this window, select "Communication test" again.

5.3. Show Data (Demo)

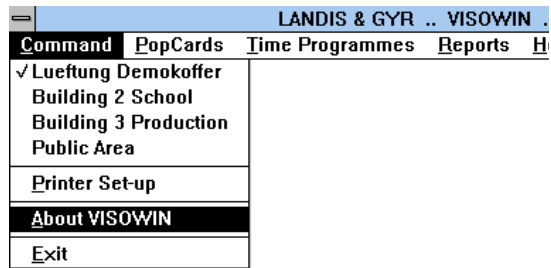
The "Show Data (Demo)" mode enables all Popcards and Time Programmes to be displayed on the screen, without any values from the substation.

5.4. Start Terminal Emulator

Starting the Terminal Emulator will disconnect VISOWIN from the substation and will start the WINDOWS terminal emulator. For operation of this Window, refer to the WINDOW system manual.

6. About VISOWIN

“About VISOWIN” from the menu “Command”, opens a window, explaining the version of the installed software.



Refer to the above information before contacting the local L&G office for technical support.

