

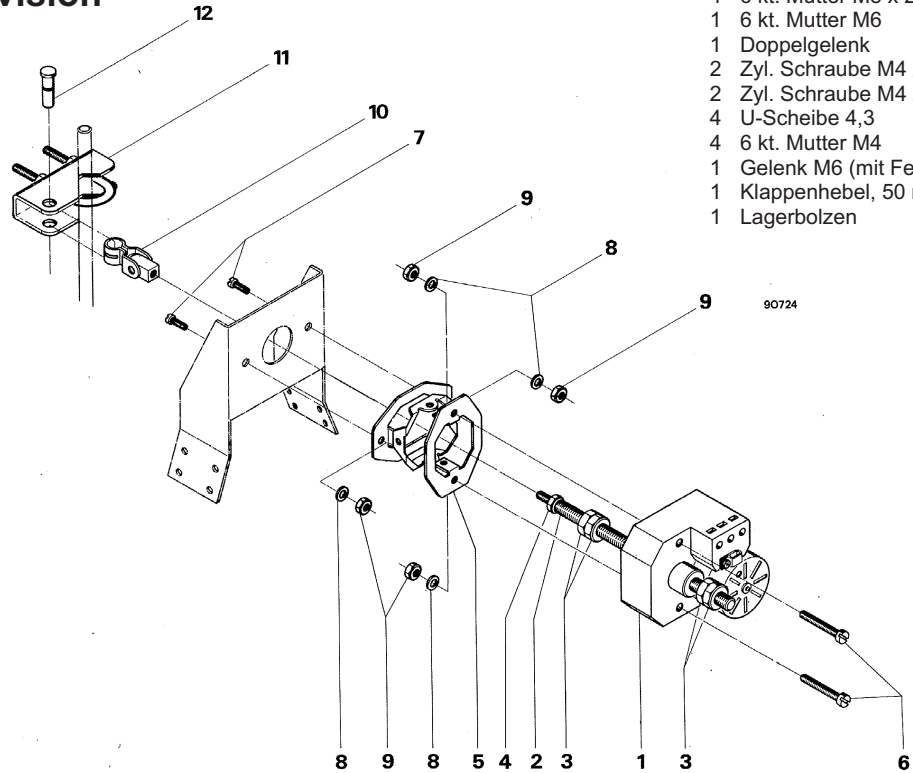
# SIEMENS

## Landis & Staefa Division

### GHD131.2E, Z/C11

für Farax DCA100/250

- |   |                          |    |
|---|--------------------------|----|
| 1 | GHD131.2E                | 1  |
| 1 | Gewindespindel 180 mm    | 2  |
| 4 | 6 kt. Mutter M8 x 2,5    | 3  |
| 1 | 6 kt. Mutter M6          | 4  |
| 1 | Doppelgelenk             | 5  |
| 2 | Zyl. Schraube M4 x 30    | 6  |
| 2 | Zyl. Schraube M4 x 10    | 7  |
| 4 | U-Scheibe 4,3            | 8  |
| 4 | 6 kt. Mutter M4          | 9  |
| 1 | Gelenk M6 (mit Feder)    | 10 |
| 1 | Klappenhebel, 50 mm kpl. | 11 |
| 1 | Lagerbolzen              | 12 |



35307 A

